



Restoring the Resilience of Florida's Coral Reef

Taylor Tucker

Reef Resilience Coordinator - Coral Reef Conservation Program
Florida Department of Environmental Protection

Resilience Forum | 08/03/2022



OVERVIEW

Florida's Coral Reef

Local Threats

Coral Disease Response

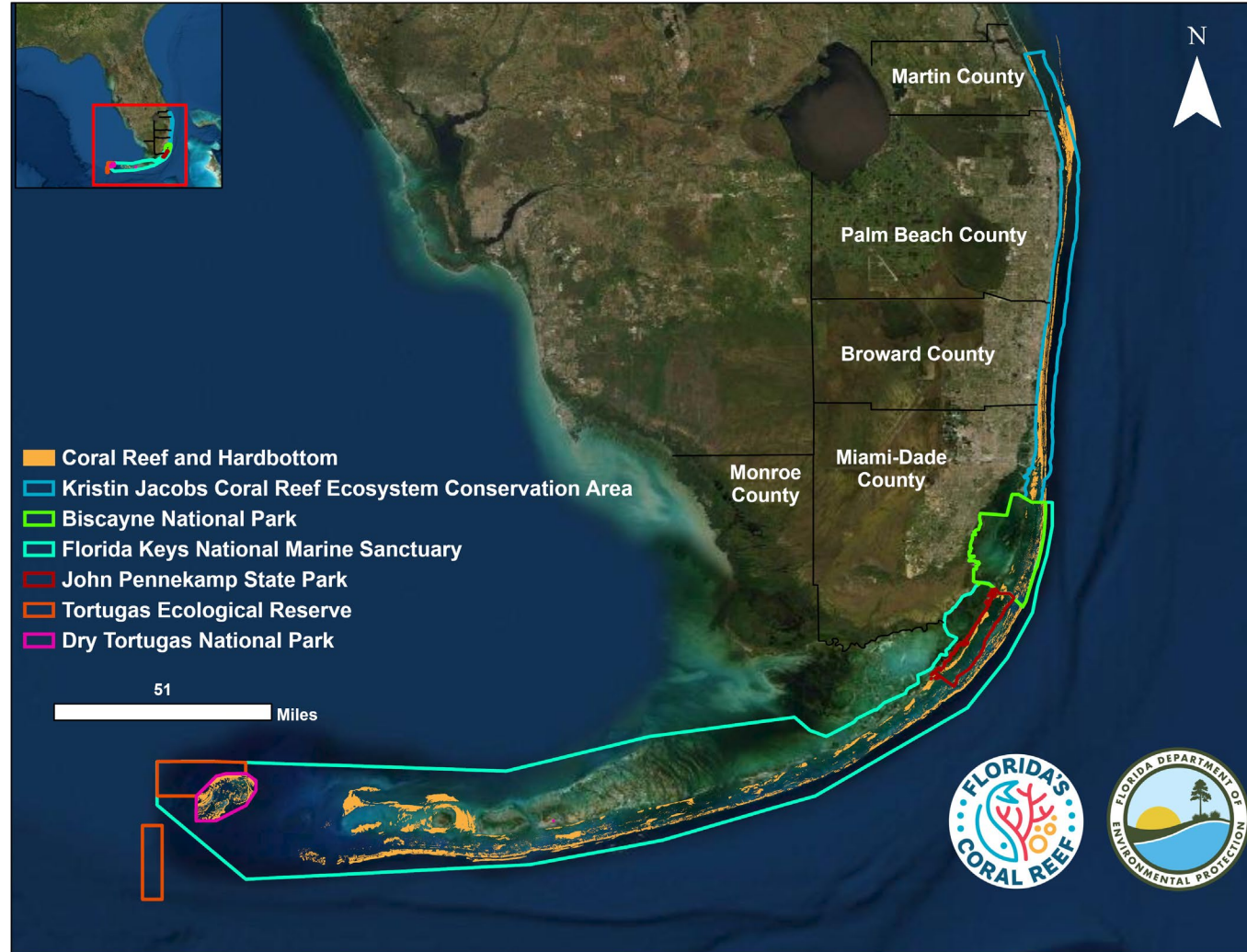
Citizen Science Programs

Your Contribution



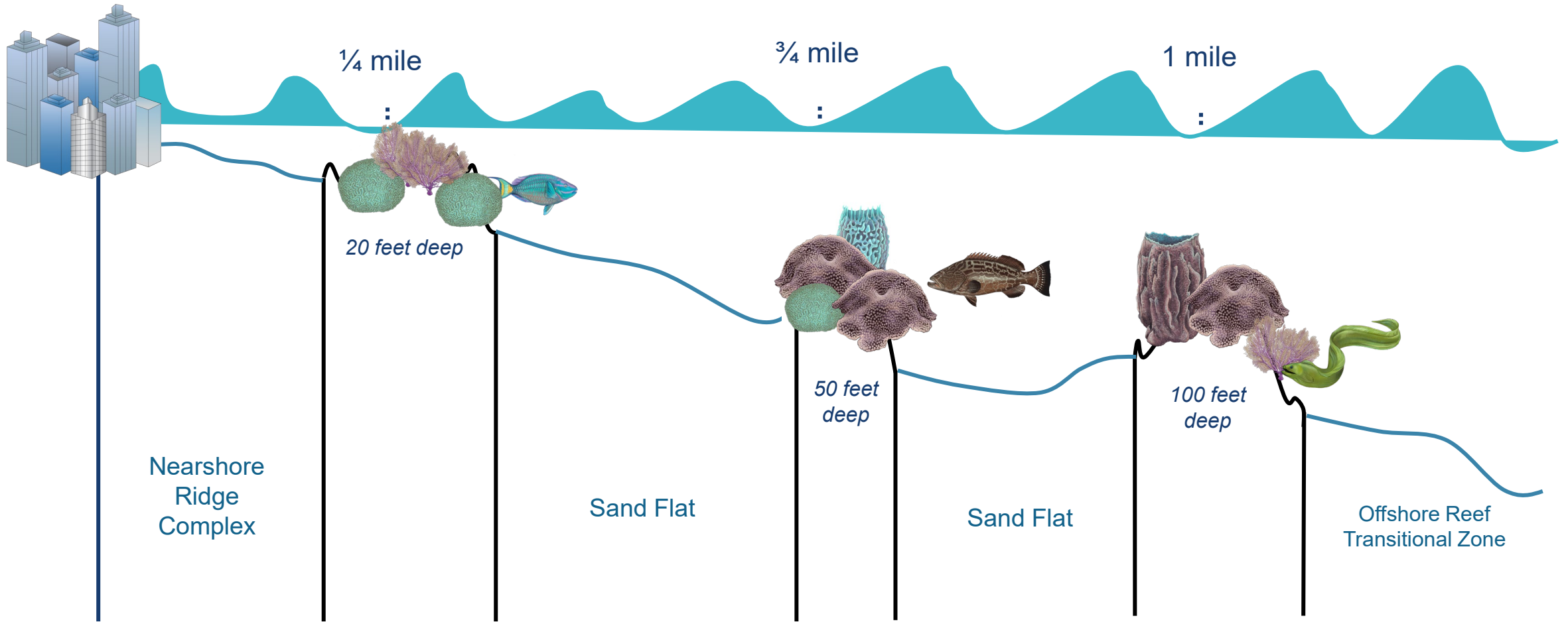


MANAGEMENT ZONE FLORIDA'S CORAL REEF





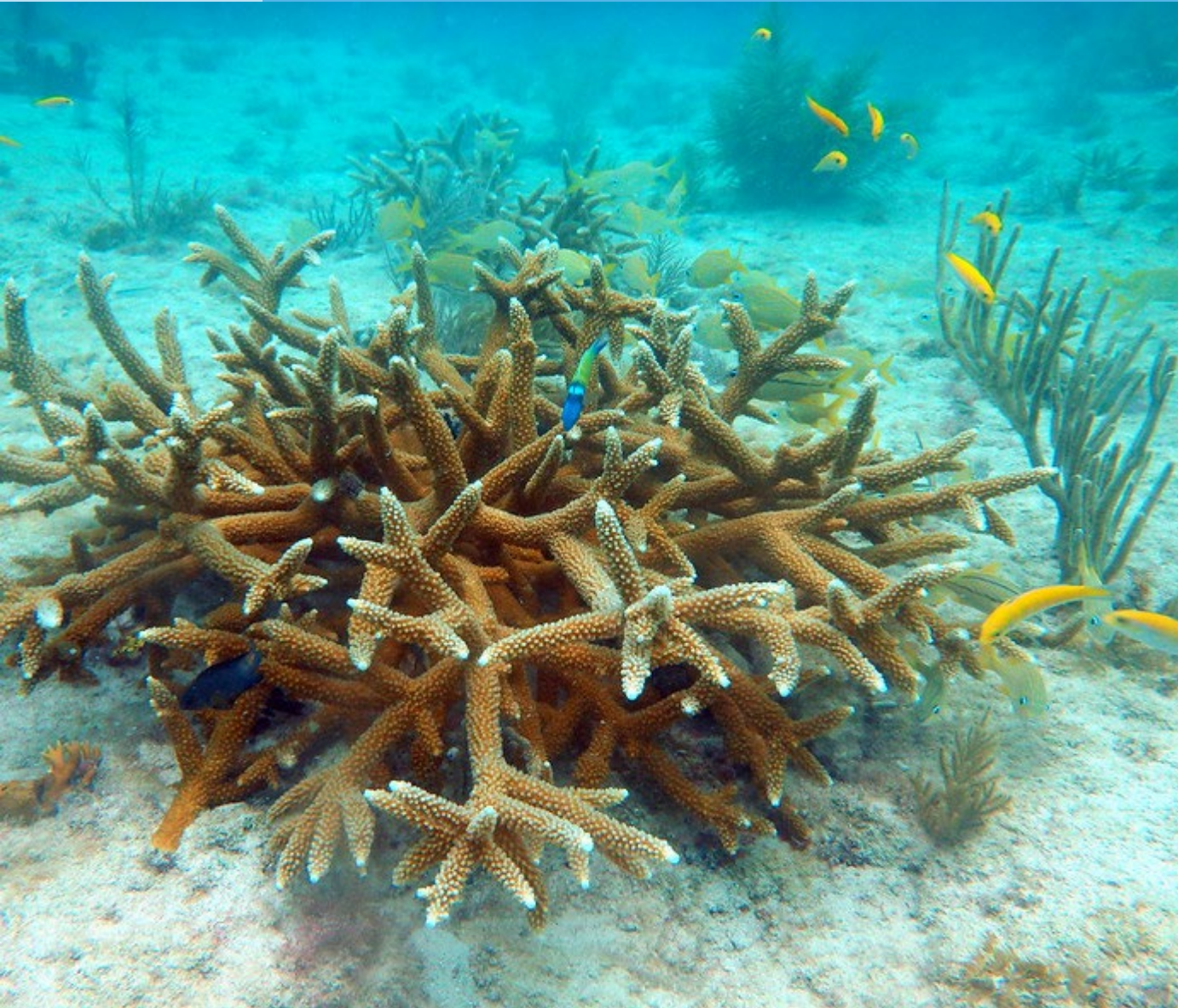
COMPOSITION FLORIDA'S CORAL REEF





COMPOSITION

FLORIDA'S CORAL REEF





COMPOSITION

FLORIDA'S CORAL REEF





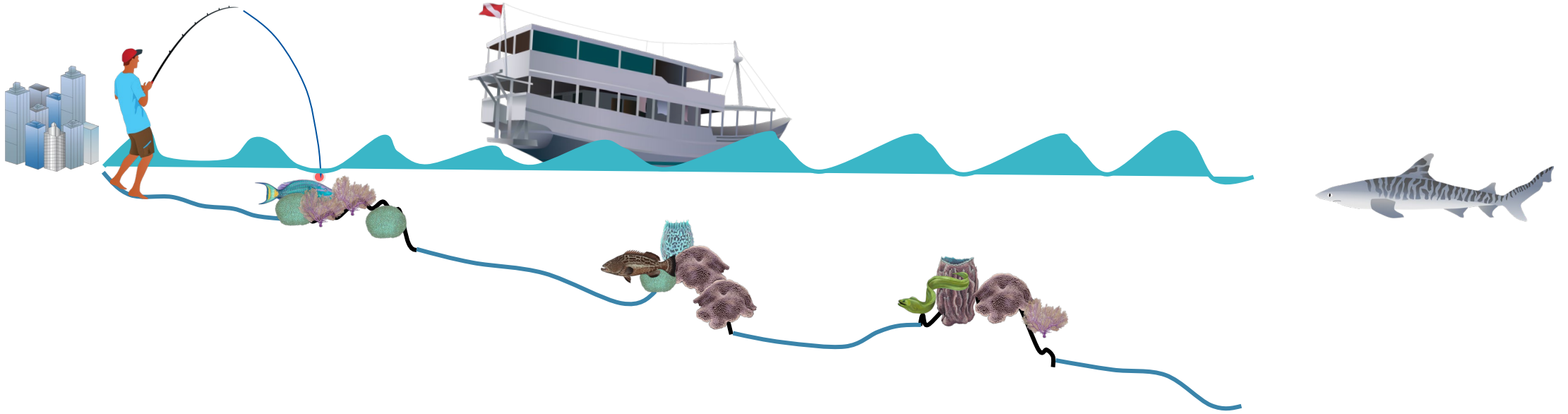
COMPOSITION

FLORIDA'S CORAL REEF





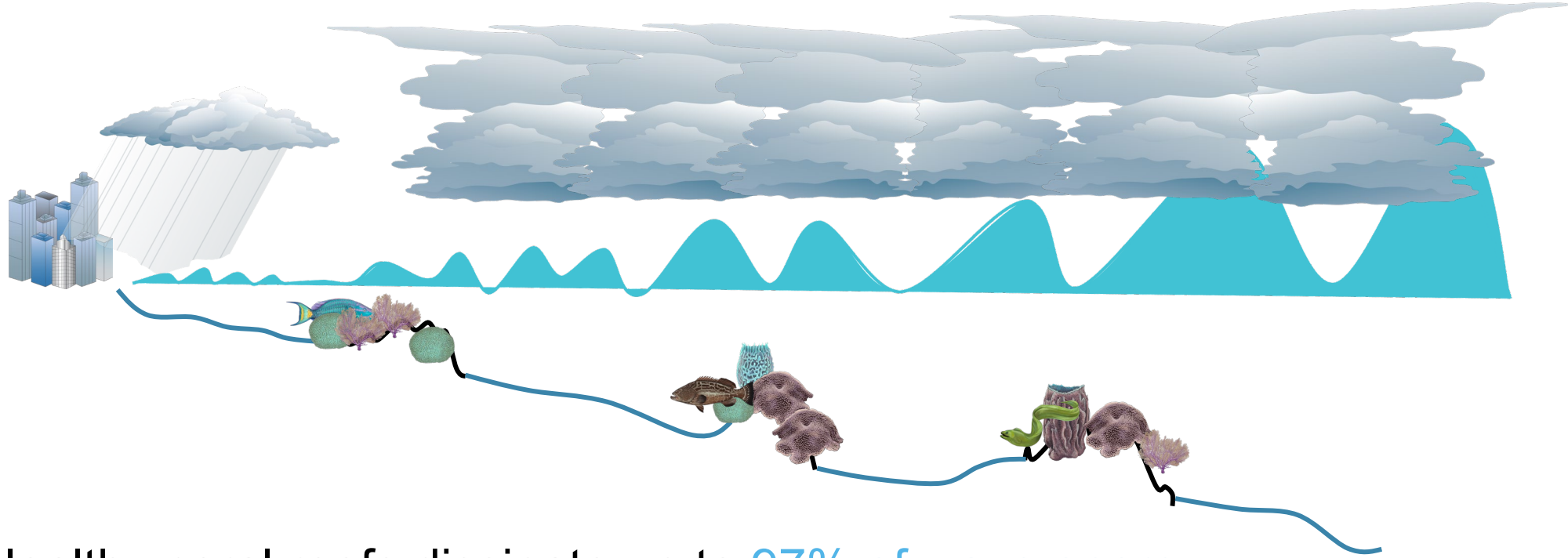
IMPORTANCE FLORIDA'S CORAL REEF



Every year, Florida's Coral Reef supports **71,000 jobs** and generates **\$6.3 billion in sales and income** in Monroe, Miami-Dade, Broward, Palm Beach and Martin counties.



IMPORTANCE FLORIDA'S CORAL REEF



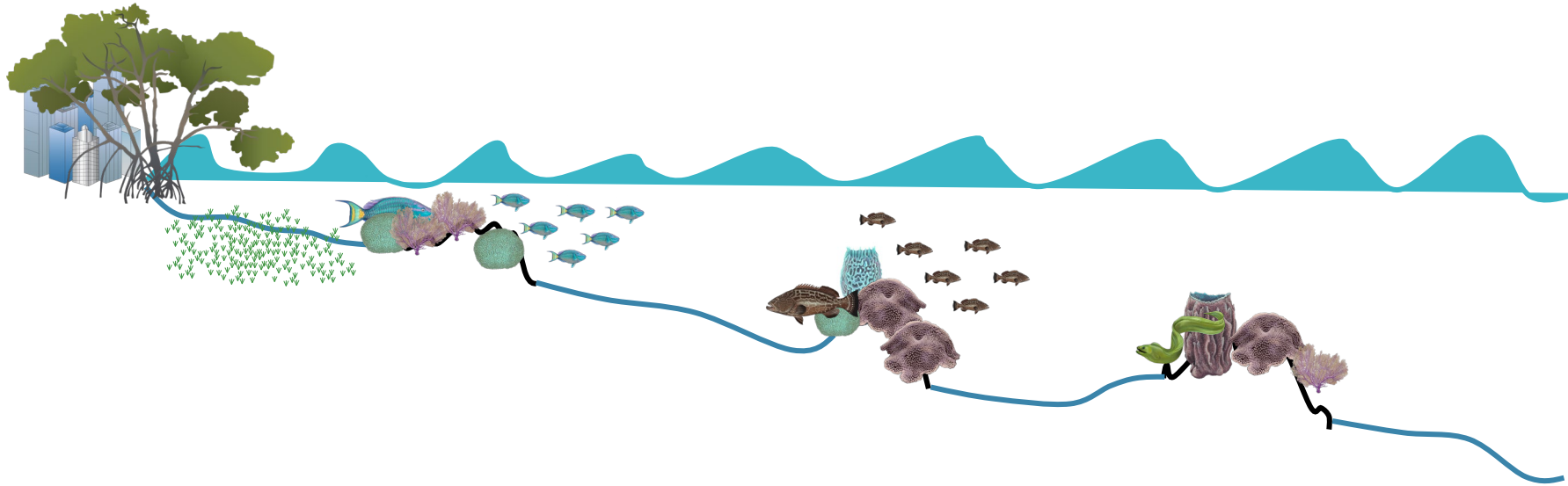
Healthy coral reefs dissipate up to **97% of wave energy**.

Every year, Florida's Coral Reef provides

- **\$355 million** in flood protection benefits to buildings and protects nearly **\$320 million** in economic activity, and
- More than **\$1 billion** in protection during extreme storm events.



IMPORTANCE FLORIDA'S CORAL REEF

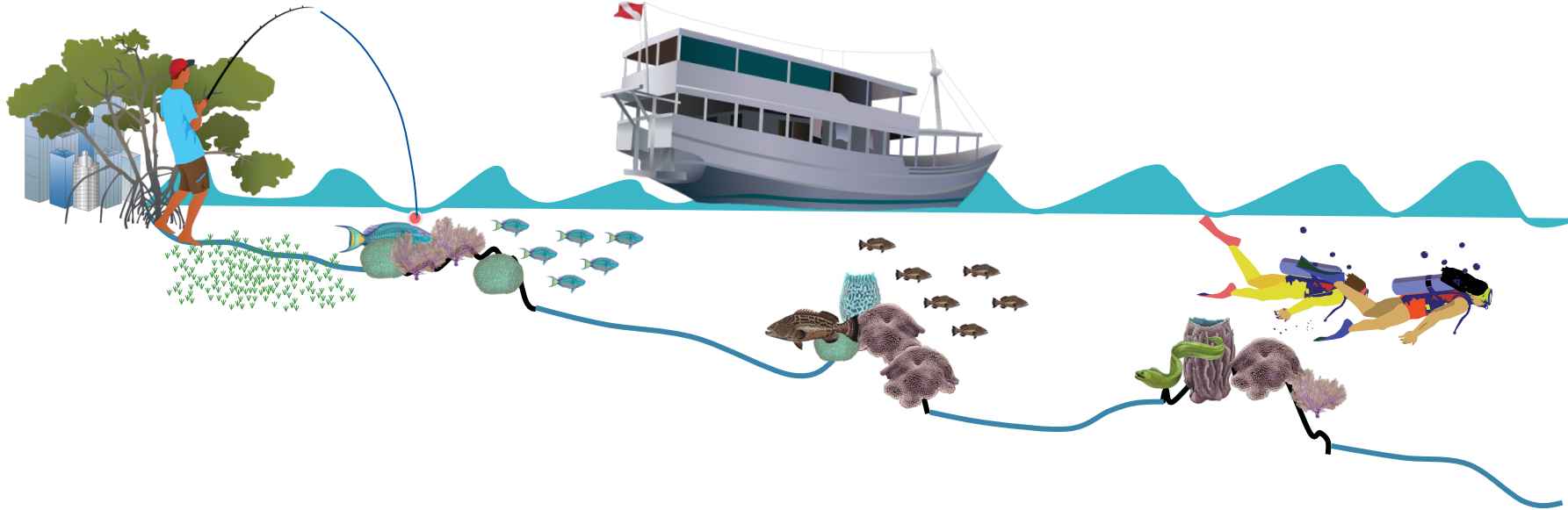


Fish depend on coral reefs, mangroves and seagrass beds to maintain growing populations.

They spend their life switching between these habitats and return to the reef when mature.



IMPORTANCE FLORIDA'S CORAL REEF



- All of Florida's Coral Reef is protected by the [Florida Coral Reef Protection Act](#).
- [All stony corals, octocorals, black corals and fire corals within FL waters are protected](#) from take/attempted take, destruction, sale and possession (68B-42.009, F.A.C.).
- The [US Coral Reef Conservation Act](#) supports conservation and research.
- The [US Endangered Species Act](#) protects species at risk of extinction.



OVERVIEW

Florida's Coral Reef

Local Threats

Coral Disease Response

Citizen Science Programs

Your Contribution





CORAL REEF CONSERVATION PROGRAM

LOCAL THREATS

Focusing on **5 key threats** to our reefs

- Maritime industry and coastal construction impacts.
- Lack of awareness and appreciation.
- Land-based sources of pollution.
- Fishing, diving and other uses.
- **Reef resilience.**





CORAL DISEASE LOCAL THREATS

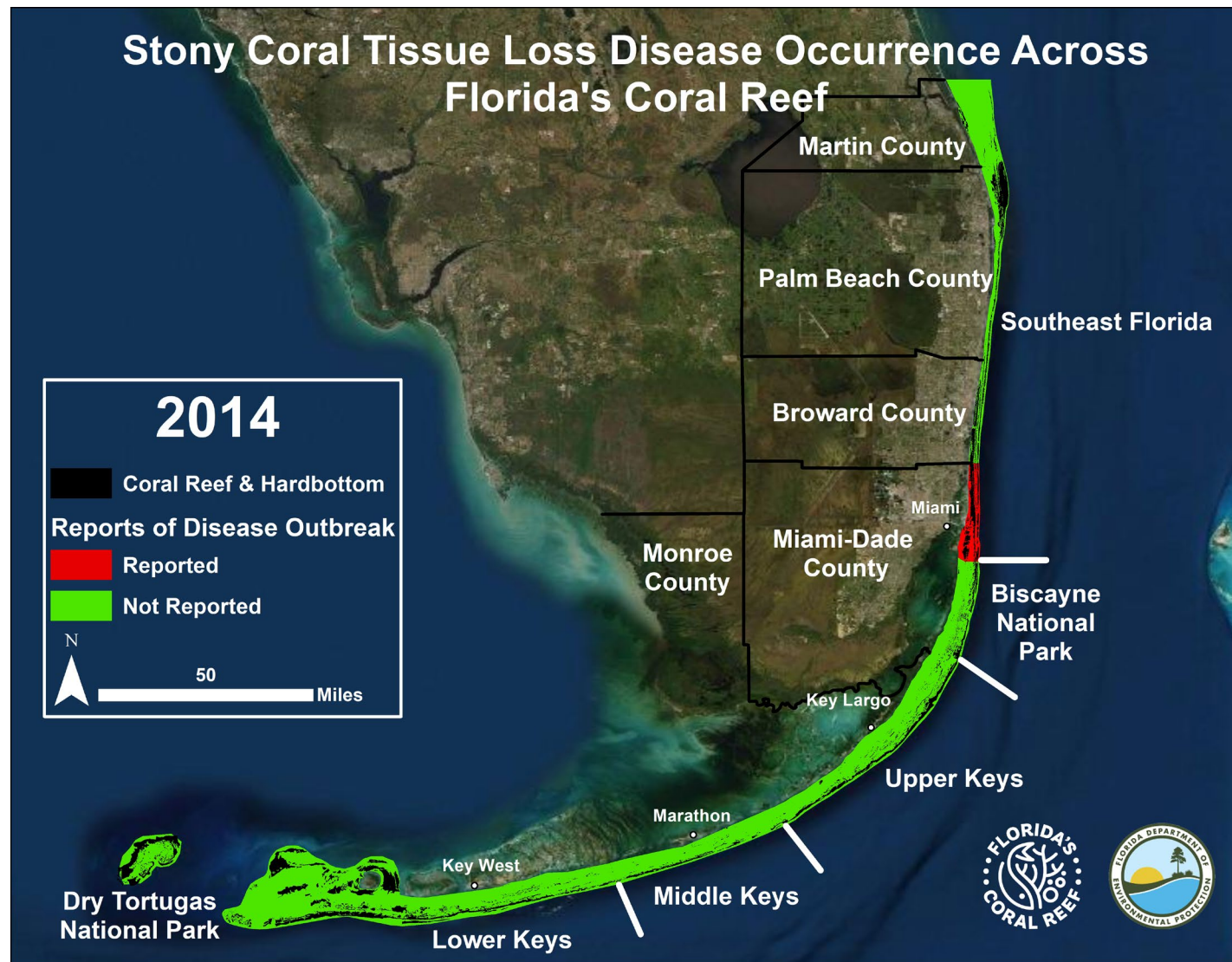
Stony Coral Tissue Loss Disease Outbreak

2014 – Present



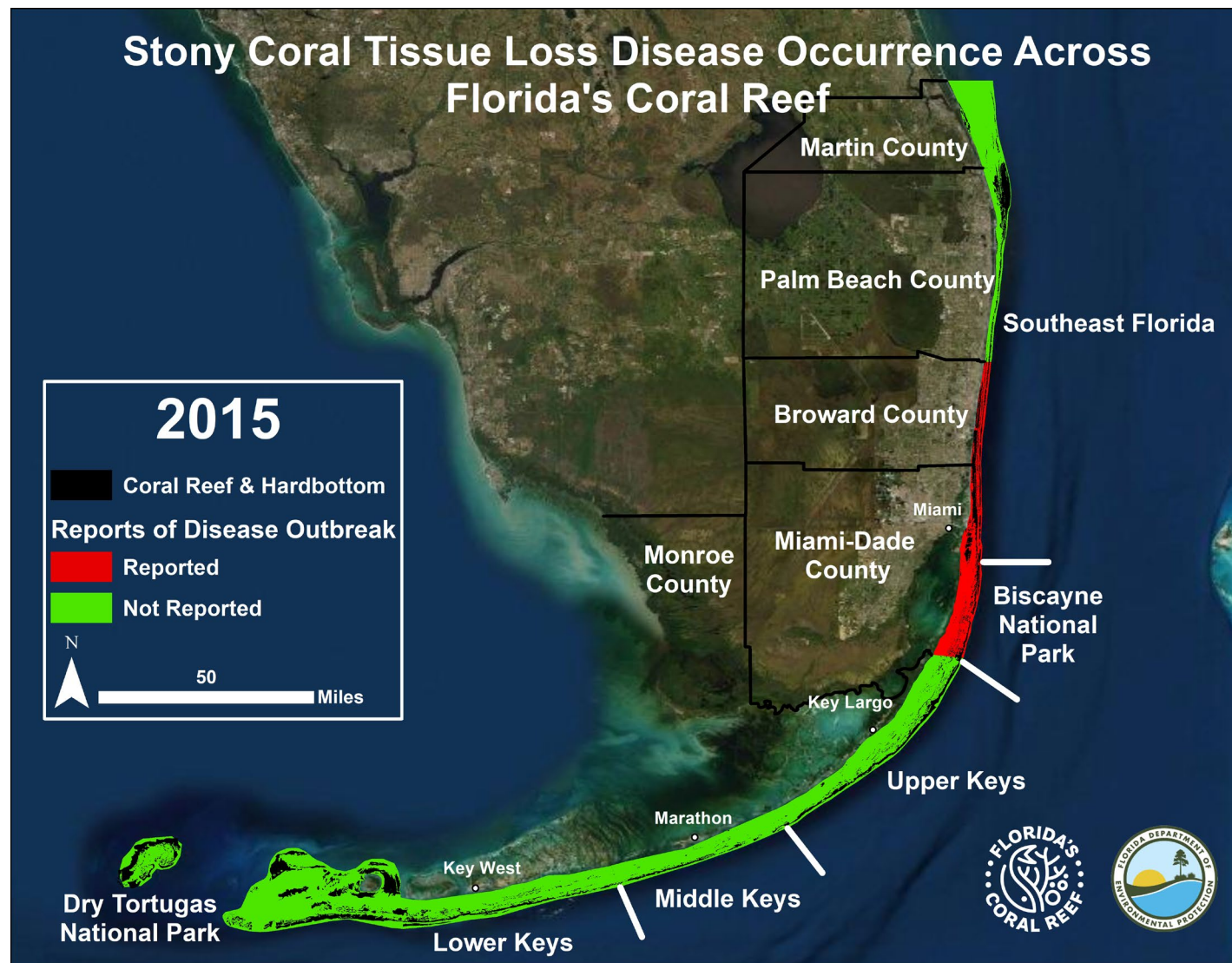


CORAL DISEASE LOCAL THREATS



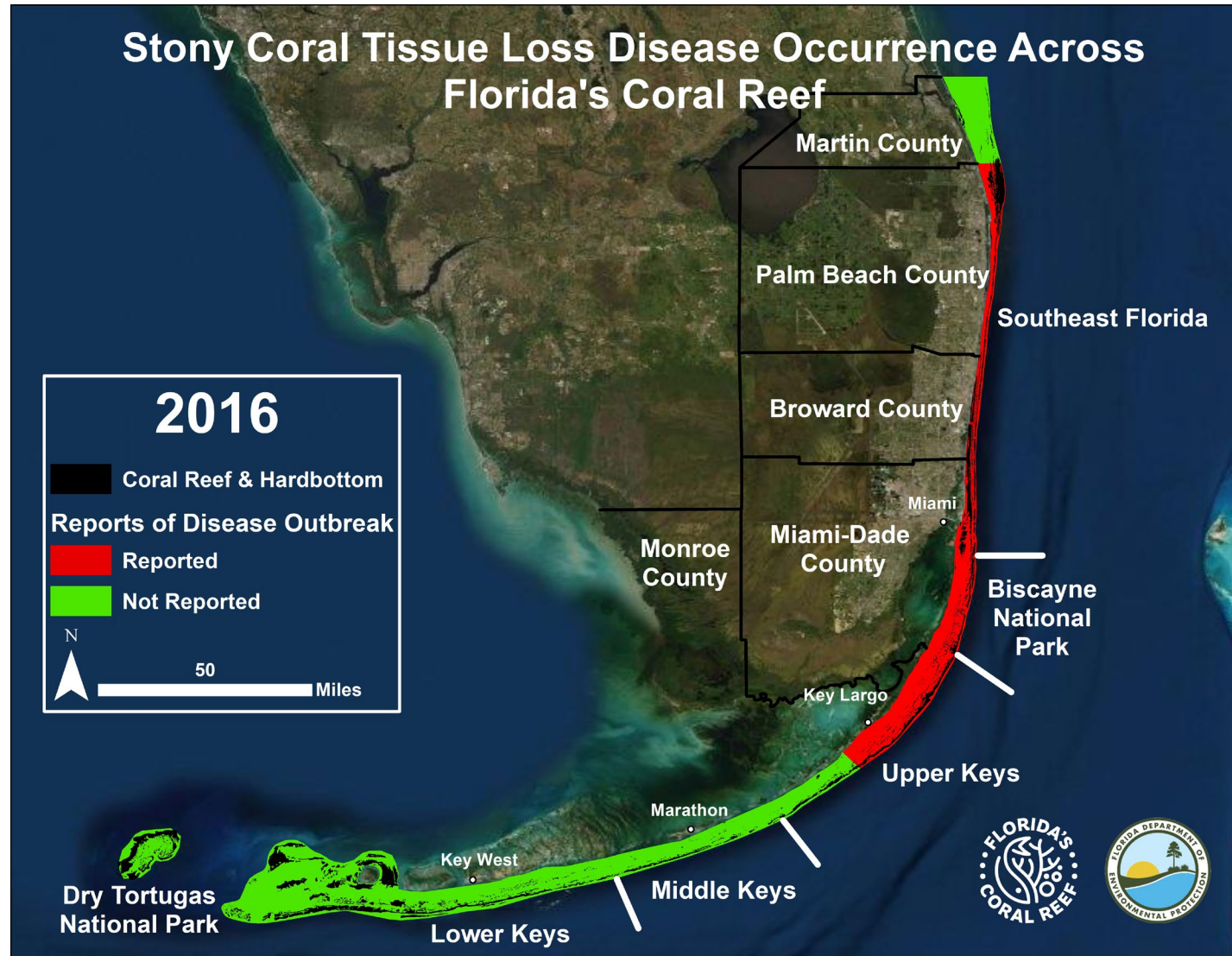


CORAL DISEASE LOCAL THREATS



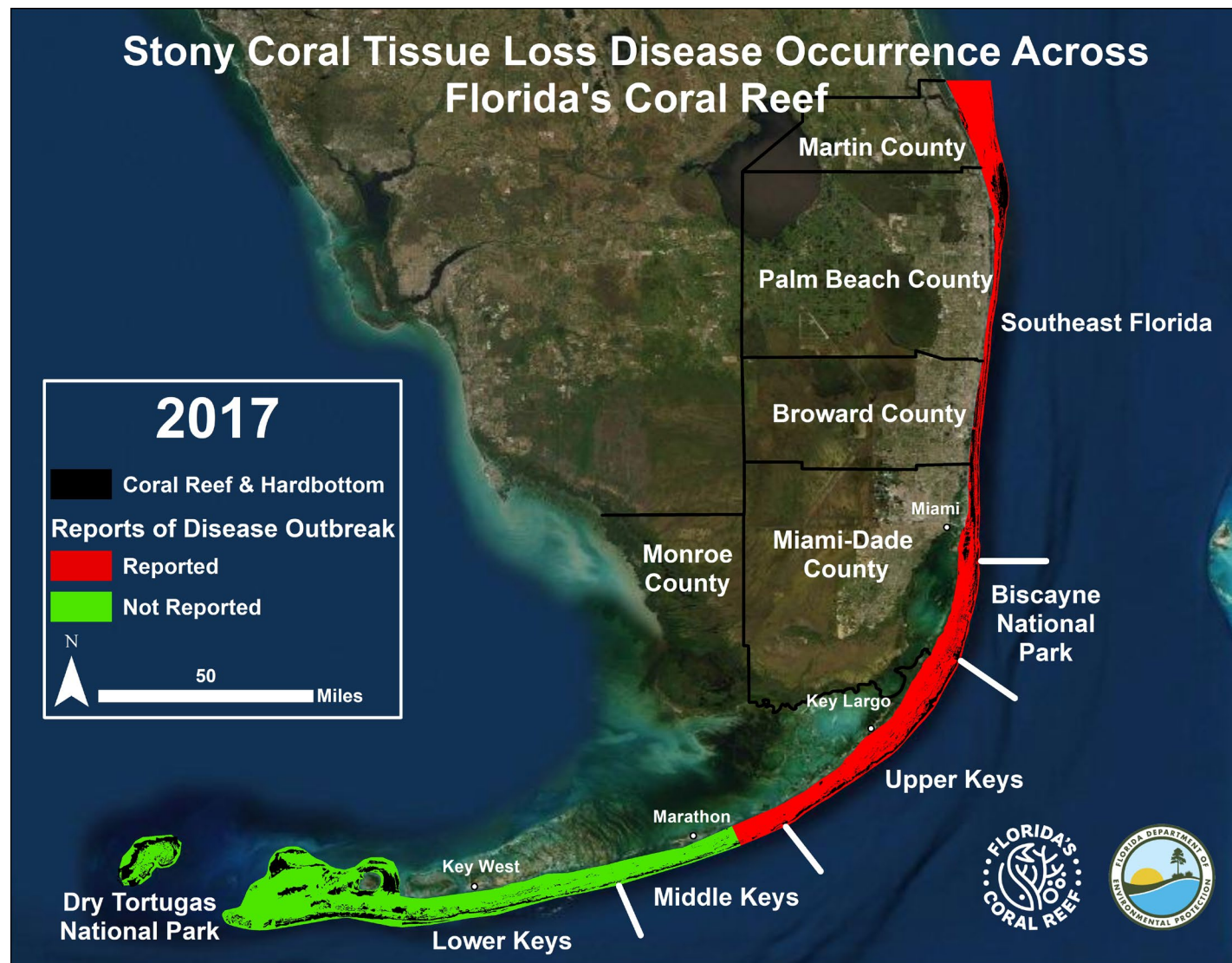


CORAL DISEASE LOCAL THREATS



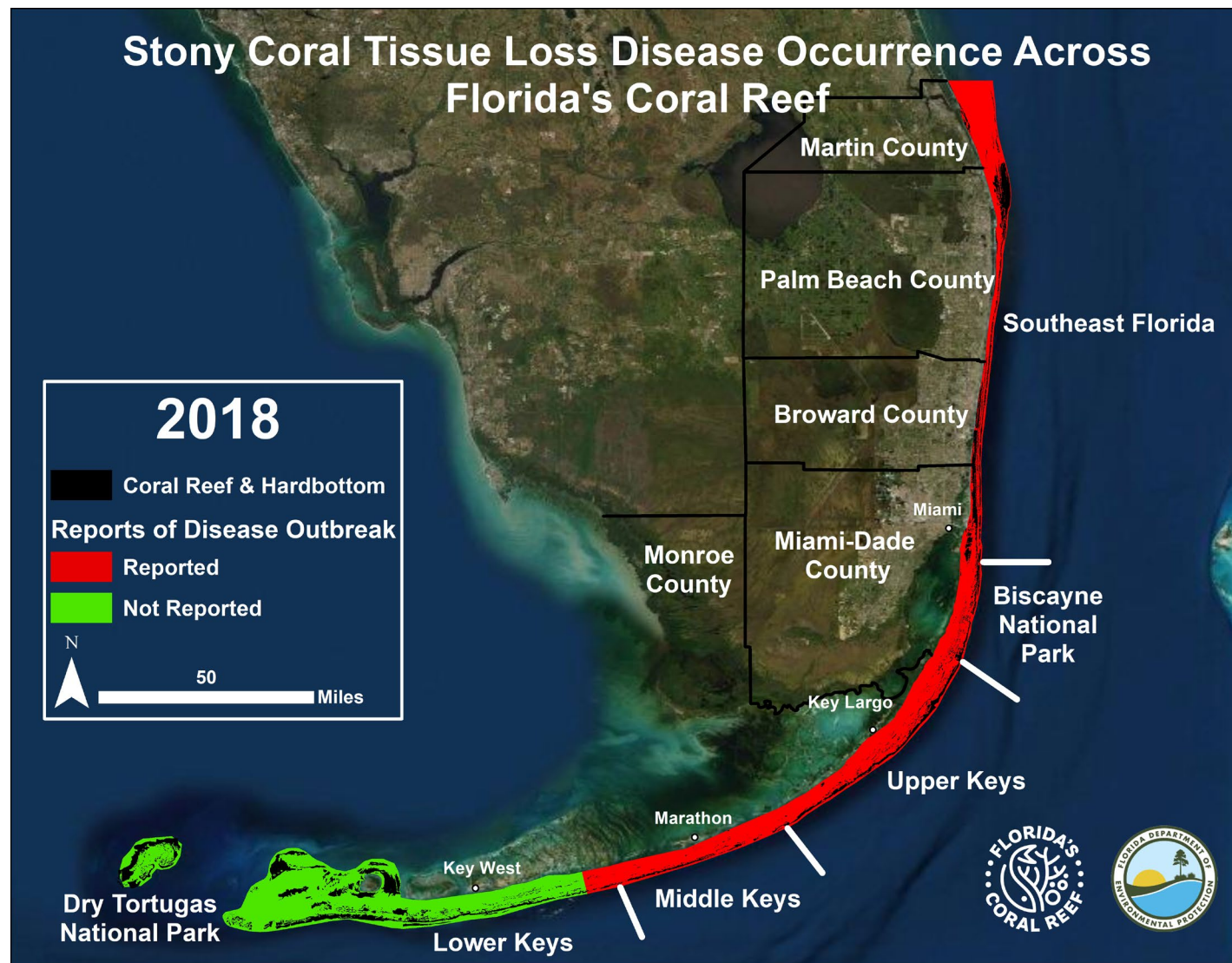


CORAL DISEASE LOCAL THREATS



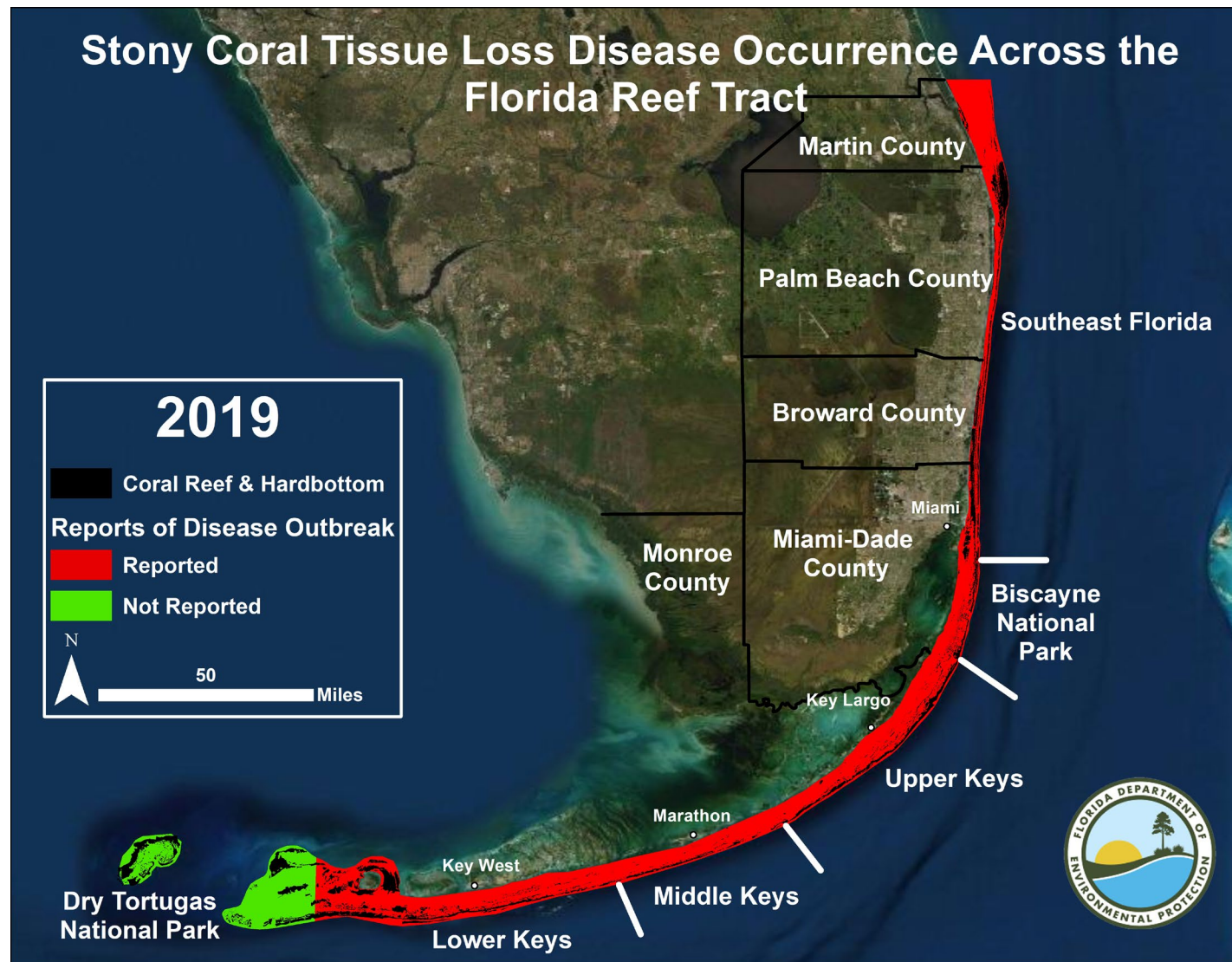


CORAL DISEASE LOCAL THREATS



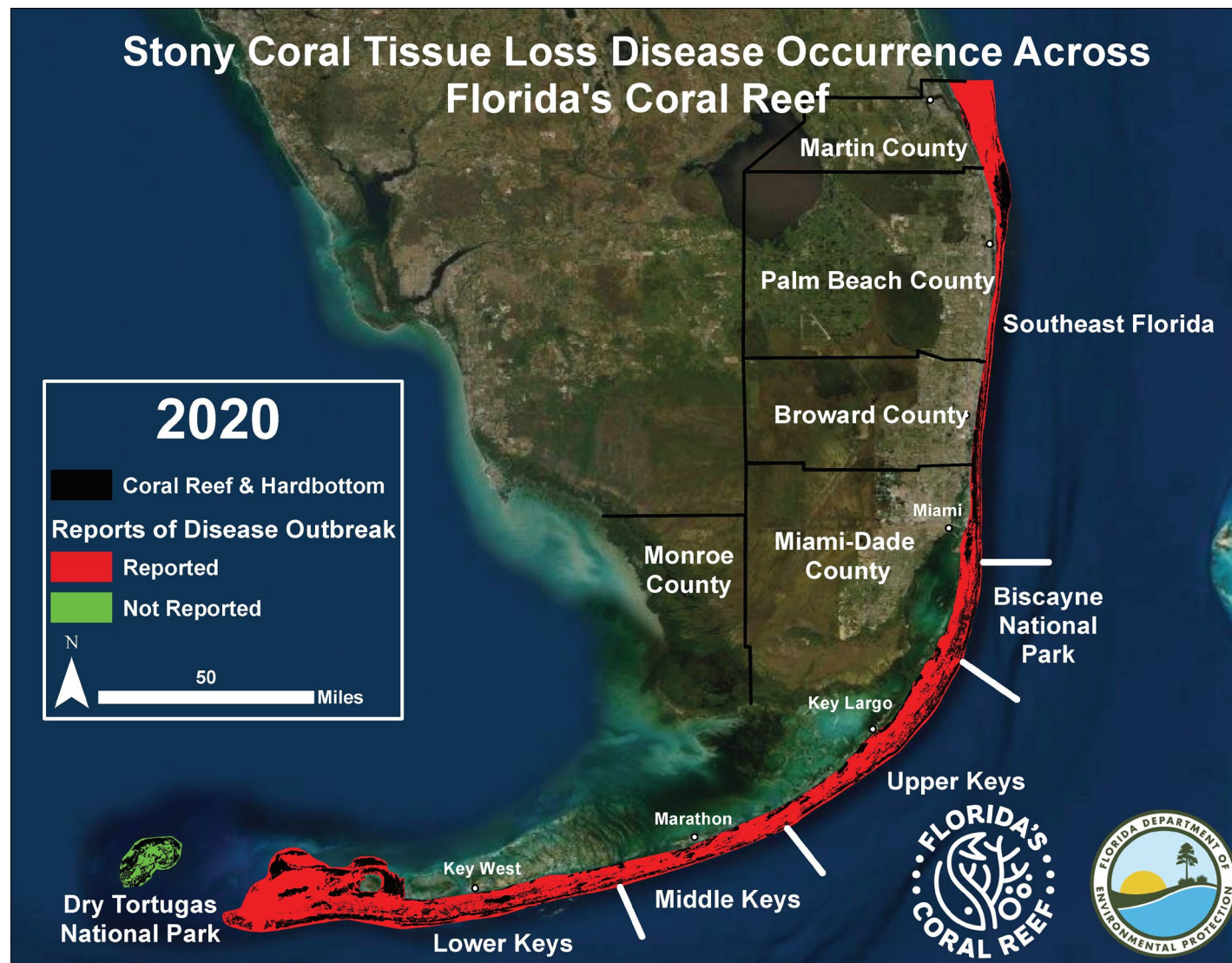


CORAL DISEASE LOCAL THREATS



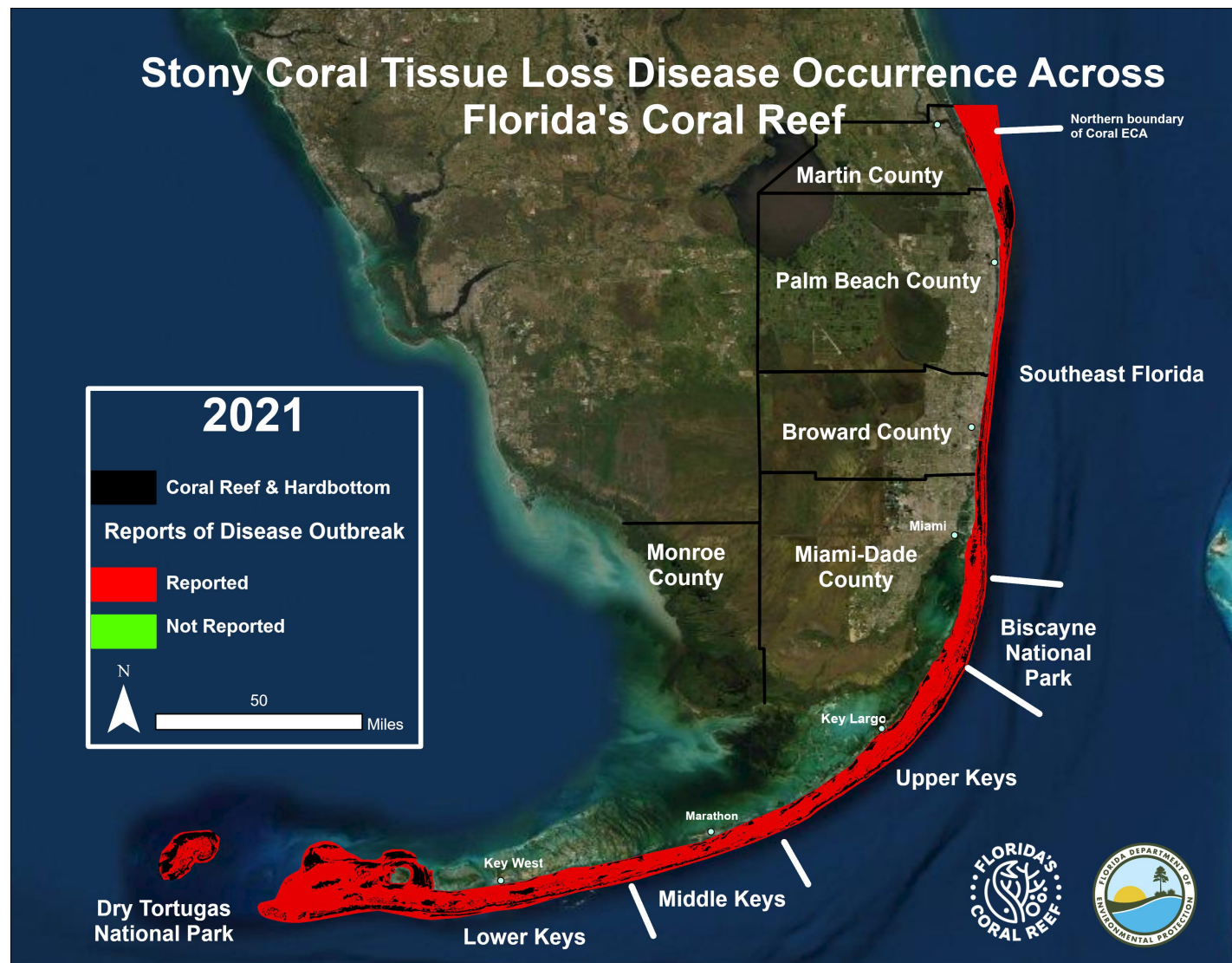


CORAL DISEASE LOCAL THREATS





CORAL DISEASE LOCAL THREATS





CORAL DISEASE BACKGROUND LEVEL

Florida's "Normal"
prevalence of
disease is

2%-3%





CORAL DISEASE BACKGROUND LEVEL

Very High =

66%-

100%

(in susceptible species)





LOCAL THREATS

CORAL DISEASE





OVERVIEW

Florida's Coral Reef

Local Threats

Coral Disease Response

Citizen Science Programs

Your Contribution





PARTNERS CORAL DISEASE RESPONSE

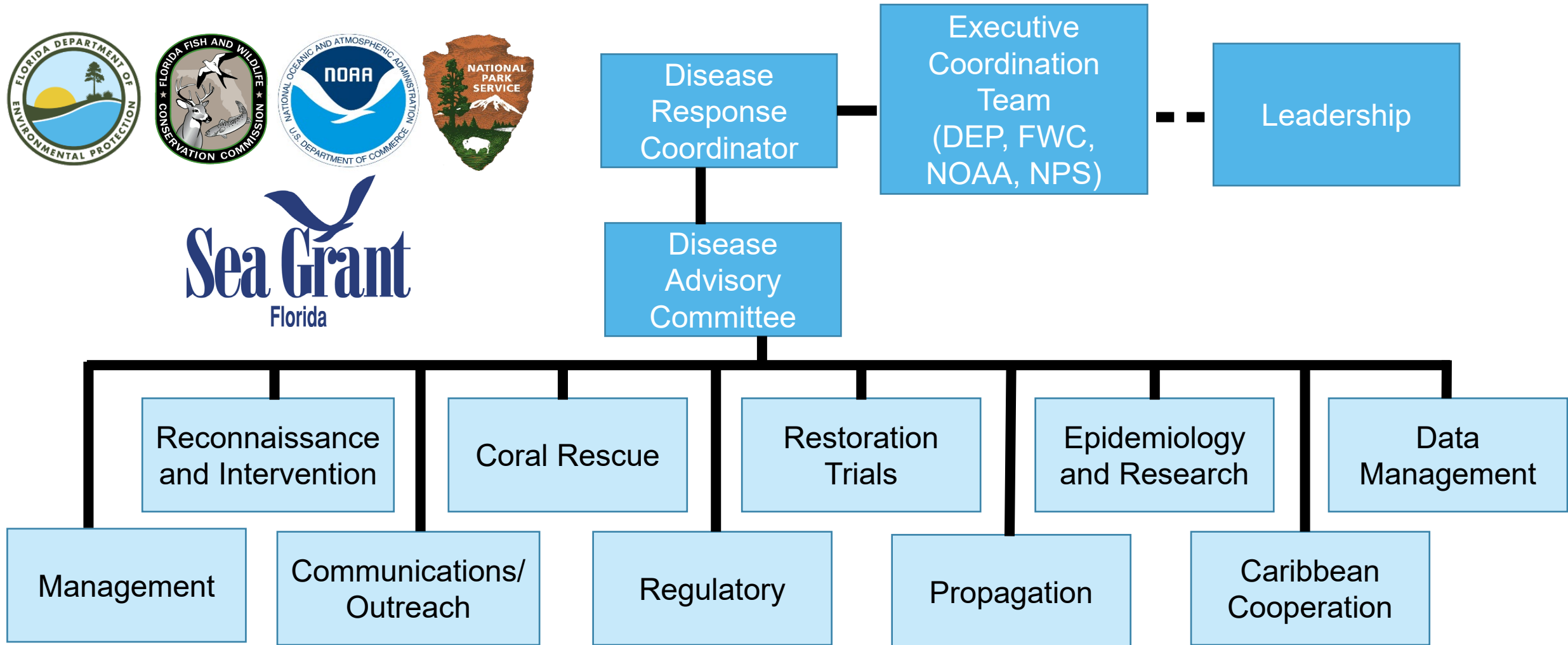




STRUCTURE

CORAL DISEASE RESPONSE

Since July 2018





TREAT CORAL DISEASE RESPONSE





RESCUE CORAL DISEASE RESPONSE

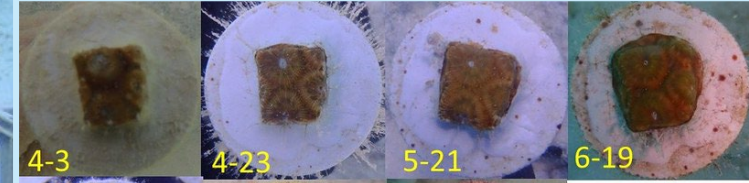
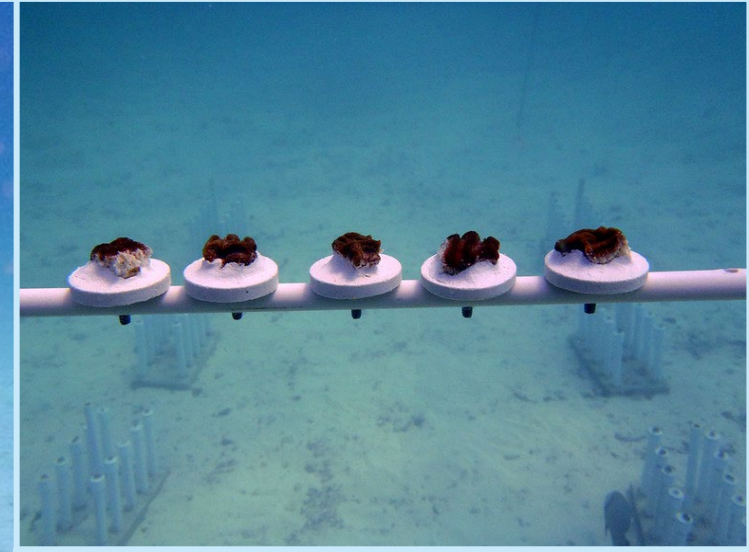


ASSOCIATION
OF ZOOS &
AQUARIUMS





RESTORE CORAL DISEASE RESPONSE



Growth over 6 months





MOVING FORWARD CORAL DISEASE RESPONSE

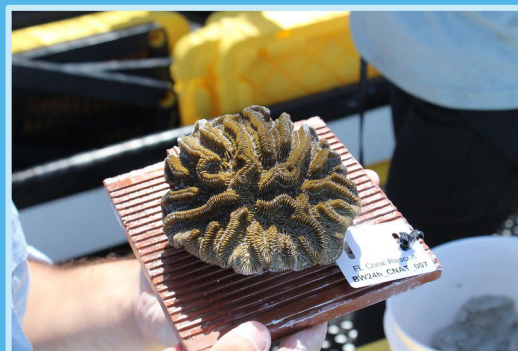
Coordination & Infrastructure

Enhance information sharing and coordination



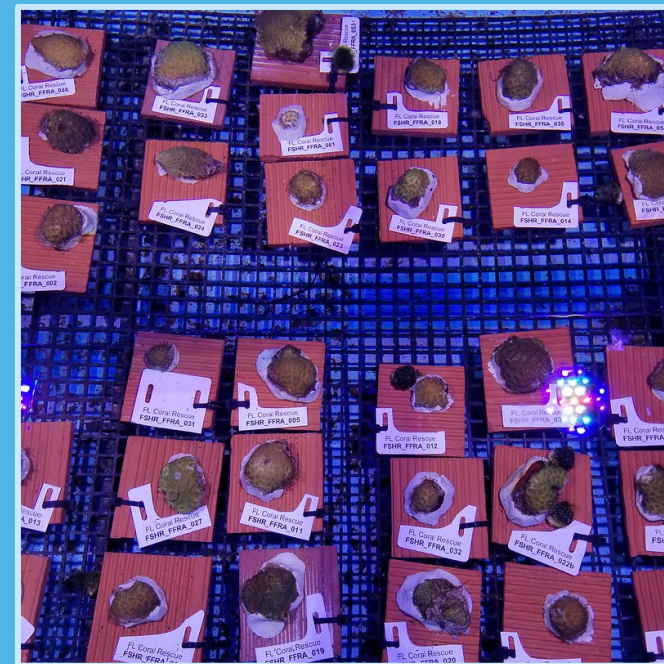
Implementation Projects

Restore ecosystem services to improve reef resilience



Restoration Planning

Enhance decision-support for managers and practitioners





OVERVIEW

Florida's Coral Reef

Local Threats

Coral Disease Response

Citizen Science Programs

Your Contribution





SEAFAN

CITIZEN SCIENCE PROGRAMS



SEAFAN

Southeast Florida Action Network

We're All Connected ~ Keep It Protected

A community-based reporting and response program for marine incidents affecting southeast Florida's coral reef ecosystem.



SEAFAN CITIZEN SCIENCE PROGRAMS

See a marine incident ?
REPORT IT !

www.SEAFAN.net/report

1-866-770-SEFL (7335)



Vessel
Groundings



Anchor
Damage



Fish Kill
& Disease



Marine
Debris



Coral Disease
& Bleaching



Discolored
Water



Harmful
Algal Blooms



Invasive
Species



Thermoclines



Other
Incidents

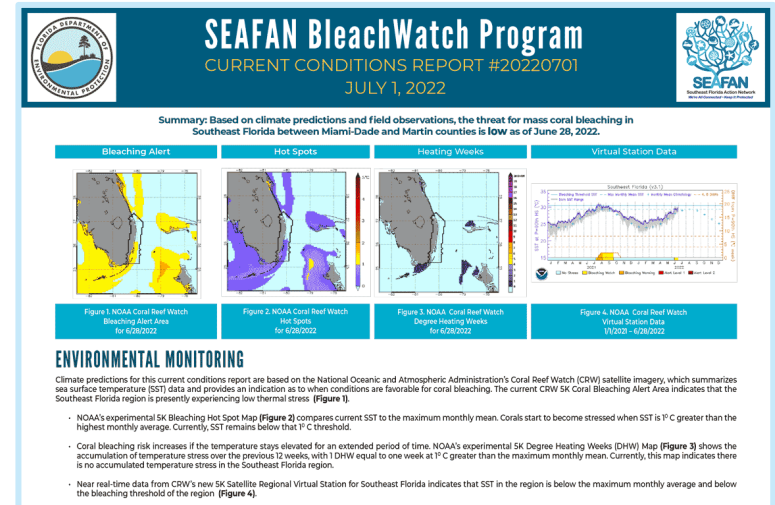


BLEACHWATCH CITIZEN SCIENCE PROGRAMS

BleachWatch is an early warning system for coral bleaching and disease in Southeast Florida.



BLEACHWATCH CITIZEN SCIENCE PROGRAMS





OVERVIEW

Florida's Coral Reef

Local Threats

Coral Disease Response

Citizen Science Programs

Your Contribution





YOUR CONTRIBUTION

ABOUT ▾ RESPONSIBILITY ▾ EXPERIENCE ACTION ▾ RESOURCES ▾ NEWS CONTACT

FLORIDA'S CORAL REEF

Conserving Florida's Coral Reef

With your help, we can rescue and restore Florida's Coral Reef and share the wonders of our waters with generations to come.

FIND OUT MORE 

Take the Pledge and Join the Florida Coral Crew

We need your support to rescue and restore Florida's Coral Reef and share the wonders of our waters with generations to come.





THANK YOU

Taylor Tucker

Reef Resilience Coordinator

Coral Reef Conservation Program

Florida Department of Environmental Protection

Contact Information:

Phone: 561-681-6631

Email: taylor.tucker@floridadep.gov