



FLORIDA DEPARTMENT OF Environmental Protection

Marjory Stoneman Douglas Building
3900 Commonwealth Boulevard
Tallahassee, FL 32399

Ron DeSantis
Governor

Jeanette Nuñez
Lt. Governor

Noah Valenstein
Secretary

Memorandum

TO: INTERESTED PARTIES

FROM: Steven A. Cutshaw, Chief, Office of Park Planning

SUBJECT: Economic Impact Assessment – Florida State Park System

DATE: September 25, 2020

Attached is the 2020 Annual Economic Impact Assessment Report for the Florida State Park System.

The Division of Recreation and Parks has generated the annual report since 1994. Numerous models and software exist to assess economic impact. To assess the economic impact of state parks and greenways and trails on Florida's economy, the Division of Recreation and Parks uses information from the National Park Service and Visit Florida, as well as Division of Recreation and Parks' data on annual park expenditures and attendance. This report is an estimate of economic benefits in the local area around a park.

If you have questions concerning the data found in the attached report, please contact the Office of Park Planning at 850.245.3051.

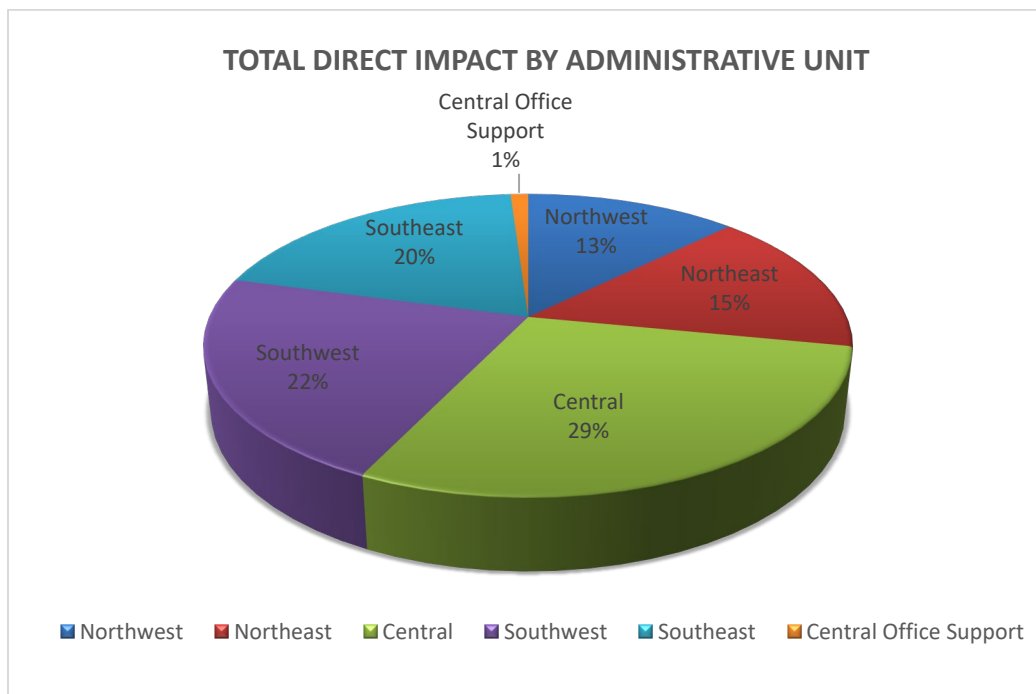
SC/dpd
Attachment

FISCAL YEAR 2019-2020 FLORIDA STATE PARK SYSTEM – ECONOMIC IMPACT ASSESSMENT

Summary of Data

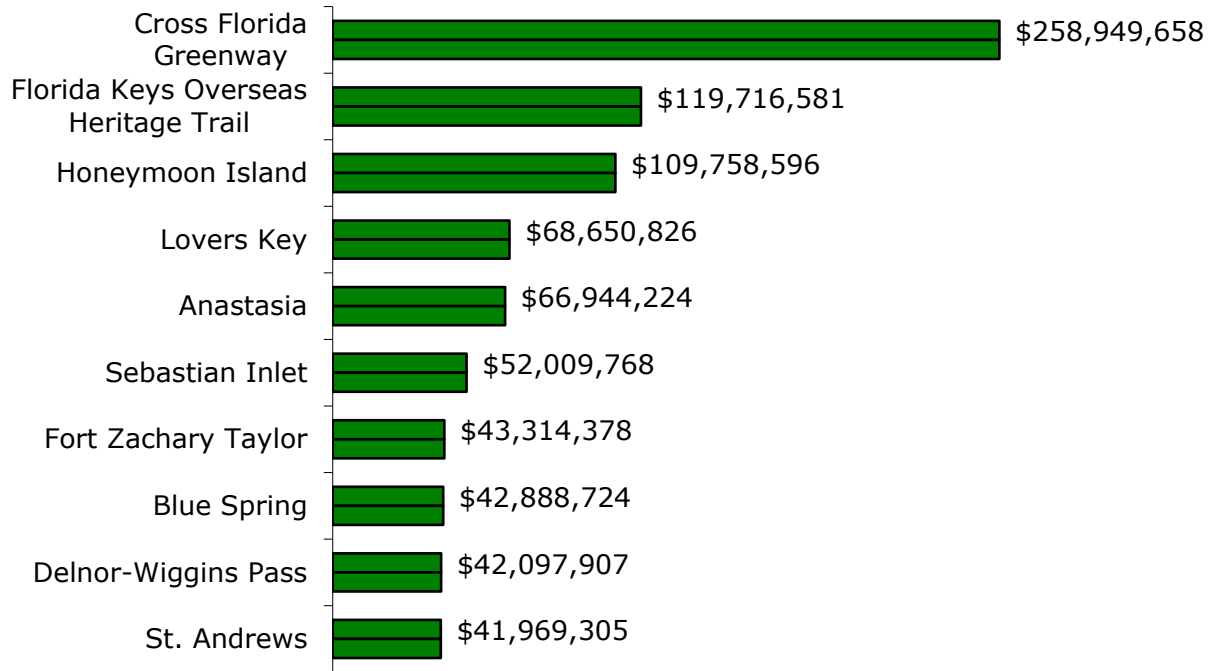
Based on Fiscal Year (FY) 2019-2020 data, a total of 24,837,900 Florida residents and visitors enjoyed our award-winning system of state parks and trails. This year the estimated total economic impact of Florida State Parks is over \$2.2 Billion in direct economic impact, generating over \$150 Million in increased sales tax revenue. In addition, 31,810 jobs were supported by state park operations. The implication of this data is that for every 1,000 persons visiting a state park in Florida, the total direct impact on the local community is approximately \$91,479.

FY 2019-2020 DIRECT ECONOMIC IMPACT BY ADMINISTRATIVE UNIT				
ADMINISTRATIVE UNIT	TOTAL DIRECT IMPACT	INCREASED STATE SALES TAX	JOBS SUPPORTED	
CENTRAL	\$ 659,835,720	\$ 44,633,559	9,238	
CENTRAL OFFICE SUPPORT	\$ 23,907,507	\$	383	
NORTHEAST	\$ 351,356,220	\$ 23,466,021	4,919	
NORTHWEST	\$ 287,163,700	\$ 18,977,782	4,020	
SOUTHEAST	\$ 447,193,554	\$ 29,774,484	6,261	
SOUTHWEST	\$ 502,686,874	\$ 33,533,555	7,038	
STATEWIDE	\$ 2,272,143,576	\$ 150,385,401	31,810	



FISCAL YEAR 2019-2020
FLORIDA STATE PARK SYSTEM – ECONOMIC IMPACT ASSESSMENT

PARKS AND TRAILS WITH GREATEST DIRECT ECONOMIC IMPACT



The ten units with the greatest direct economic impacts in the state are shown above. The economic impacts of these parks are due to many factors including: geographic location and available amenities.

FISCAL YEAR 2019-2020
FLORIDA STATE PARK SYSTEM – ECONOMIC IMPACT ASSESSMENT

Definition of Terms

1. Total Direct Economic Impact: The number of new dollars spent in a local economy by non-local park visitors and park operations.
2. Increased State Sales Tax: The estimated amount of tax dollars the state receives from park visitor expenditures.
3. Total Jobs Supported: This may be any combination of seasonal, temporary, part-time or full-time employment that adds up to 16 full-time jobs per one million dollars in total new expenditures in the local area. Source: [Thomas, C., Huber, C. & Koontz, L. 2012 National Park Visitor Spending Effects: Economic Contributions to Local Communities, States, and the Nation. Fort Collins, Colorado: U.S. Geological Survey & National Park Service]
4. Park Annual Attendance: The total attendance which occurred during the 12-month FY 2019-2020. Source: DEP Bureau of Operational Services.
5. Non-Local Visitor Percentage: The percentage of visitors to a state park unit that are not from the local area. "Impact" is a measure of new dollars introduced to a community.
6. Average Per-Person Per-Day Expenditure: For the purposes of this assessment, the average per-person, per-day expenditure is defined as "the average amount that residents and non-residents traveling by automobile will spend, per-person, per-day in Florida". The spending categories include transportation, food (grocery & restaurant), and lodging. State park-specific data on this factor is not available. The information on visitor expenditures for this assessment is based on the 2019-2020 annual data from VISIT FLORIDA.
7. FY 2019-2020 Expenditures: Total expenditures (salaries/benefits, operating expenses, and fixed capital expenditures) made by the park or administrative unit during the 12-month FY 2019-2020. Source: DEP Bureau of Finance and Accounting.

**STATE PARK SYSTEM DIRECT ECONOMIC IMPACT ASSESSMENT
FISCAL YEAR 2019-2020
STATEWIDE TOTAL**

DISTRICT	PARK ANNUAL ATTENDANCE	AVERAGE NON-LOCAL VISITOR PERCENT* X	AVERAGE PER-PERSON/DAY EXPENDITURE** =	VISITOR EXPENDITURES IN LOCAL AREA +	FY 19/20 EXPENDITURES =	TOTAL DIRECT ECONOMIC IMPACT	INCREASED STATE SALES TAX REVENUE ON VISITOR EXPENDITURES (7%)	TOTAL JOBS SUPPORTED ***
DISTRICT 1	3,134,284	0.74	\$ 116.89	\$ 271,111,178	\$ 16,052,522	\$ 287,163,700	\$ 18,977,782	4,020
DISTRICT 2	3,876,474	0.74	\$ 116.89	\$ 335,228,871	\$ 16,127,350	\$ 351,356,220	\$ 23,466,021	4,919
DISTRICT 3	7,371,475	0.74	\$ 116.89	\$ 637,622,267	\$ 22,213,453	\$ 659,835,720	\$ 44,633,559	9,238
DISTRICT 4	5,538,249	0.74	\$ 116.89	\$ 479,050,785	\$ 23,636,089	\$ 502,686,874	\$ 33,533,555	7,038
DISTRICT 5	4,917,418	0.74	\$ 116.89	\$ 425,349,773	\$ 21,843,781	\$ 447,193,554	\$ 29,774,484	6,261
CENTRAL OFFICE SUPPORT	0	0.74	\$ 116.89	\$	\$ 23,907,507	\$ 23,907,507	\$	383
STATEWIDE	24,837,900	0.74	\$ 116.89	\$ 2,148,362,874	\$ 123,780,702	\$ 2,272,143,576	\$ 150,385,401	31,810

*16 jobs per \$1 million in total expenditures in local area [Thomas, C., Huber, C. & Koontz, L. 2012 *National Park Visitor Spending Effects: Economic Contributions to Local Communities, States, and the Nation*. Fort Collins, Colorado: U.S. Geological Survey & National Park Service].

**STATE PARK SYSTEM DIRECT ECONOMIC IMPACT ASSESSMENT
FISCAL YEAR 2019-2020
DISTRICT 1**

PARK	PARK ANNUAL ATTENDANCE	X	AVERAGE NON-LOCAL VISITOR PERCENT*	X	AVERAGE PER-PERSON/DAY EXPENDITURE**	=	VISITOR EXPENDITURES IN LOCAL AREA	+	FY 19/20 EXPENDITURES	=	TOTAL DIRECT ECONOMIC IMPACT	INCREASED STATE SALES TAX REVENUE ON VISITOR EXPENDITURES (7%)	TOTAL JOBS SUPPORTED ***
			PERCENT*		EXPENDITURE**		IN LOCAL AREA		EXPENDITURES		IMPACT	(7%)	***
Alfred B. Maclay Gardens	93,658		0.74		\$116.89		\$ 8,101,286		\$ 808,427		\$ 8,909,713	\$ 567,090	125
Bald Point	30,621		0.74		\$116.89		\$ 2,648,674		\$ 130,799		\$ 2,779,473	\$ 185,407	39
Big Lagoon	110,254		0.74		\$116.89		\$ 9,536,817		\$ 799,719		\$ 10,336,536	\$ 667,577	145
Blackwater Heritage Trail	218,287		0.74		\$116.89		\$ 18,881,520		\$ 89,594		\$ 18,971,114	\$ 1,321,706	266
Blackwater River	78,680		0.74		\$116.89		\$ 6,805,710		\$ 295,853		\$ 7,101,563	\$ 476,400	99
Camp Helen	32,773		0.74		\$116.89		\$ 2,834,819		\$ 298,891		\$ 3,133,710	\$ 198,437	44
Constitution Convention	698		0.74		\$116.89		\$ 60,376		\$ 52,374		\$ 112,750	\$ 4,226	2
Deer Lake	19,557		0.74		\$116.89		\$ 1,691,653		\$ 46,420		\$ 1,738,073	\$ 118,416	24
Dr. Julian G. Bruce St. George Island	166,541		0.74		\$116.89		\$ 14,405,563		\$ 740,318		\$ 15,145,881	\$ 1,008,389	212
Econfina River	11,198		0.74		\$116.89		\$ 968,611		\$ 4,240		\$ 972,852	\$ 67,803	14
Eden Gardens	36,128		0.74		\$116.89		\$ 3,125,021		\$ 110,160		\$ 3,235,182	\$ 218,751	45
Edward Ball Wakulla Springs	154,457		0.74		\$116.89		\$ 13,360,314		\$ 1,518,772		\$ 14,879,086	\$ 935,222	208
Falling Waters	58,866		0.74		\$116.89		\$ 5,091,827		\$ 418,202		\$ 5,510,029	\$ 356,428	77
Florida Caverns	39,405		0.74		\$116.89		\$ 3,408,477		\$ 682,099		\$ 4,090,576	\$ 238,593	57
Fred Gannon Rocky Bayou	83,636		0.74		\$116.89		\$ 7,234,397		\$ 324,569		\$ 7,558,966	\$ 506,408	106
Grayton Beach	186,686		0.74		\$116.89		\$ 16,148,078		\$ 924,030		\$ 17,072,108	\$ 1,130,365	239
Henderson Beach	385,841		0.74		\$116.89		\$ 33,374,706		\$ 692,615		\$ 34,067,321	\$ 2,336,229	477
John Gorrie Museum	2,711		0.74		\$116.89		\$ 234,498		\$ 34,866		\$ 269,364	\$ 16,415	4
Lake Jackson Mounds	20,627		0.74		\$116.89		\$ 1,784,207		\$ 237,840		\$ 2,022,047	\$ 124,894	28
Lake Talquin (includes Yellow River Bluff)	8,821		0.74		\$116.89		\$ 763,004		\$ 186,355		\$ 949,359	\$ 53,410	13
Letchworth-Love Mounds	5,969		0.74		\$116.89		\$ 516,310		\$ 57,615		\$ 573,926	\$ 36,142	8
Natural Bridge Battlefield	4,441		0.74		\$116.89		\$ 384,140		\$ 57,552		\$ 441,693	\$ 26,890	6
Ochlockonee River	31,578		0.74		\$116.89		\$ 2,731,453		\$ 314,660		\$ 3,046,113	\$ 191,202	43
Orman House	3,199		0.74		\$116.89		\$ 276,709		\$ 37,339		\$ 314,048	\$ 19,370	4
Perdido Key	198,276		0.74		\$116.89		\$ 17,150,596		\$ 40,610		\$ 17,191,206	\$ 1,200,542	241
Ponce de Leon Springs	78,277		0.74		\$116.89		\$ 6,770,851		\$ 140,644		\$ 6,911,495	\$ 473,960	97
San Marcos de Apalache	10,212		0.74		\$116.89		\$ 883,324		\$ 125,449		\$ 1,008,772	\$ 61,833	14
St. Andrews	472,087		0.74		\$116.89		\$ 40,834,865		\$ 1,134,441		\$ 41,969,305	\$ 2,858,441	588
St. Marks River Preserve	-		0.74		\$116.89		\$ -		\$ -		\$ -	\$ -	0
T.H. Stone Memorial St. Joseph	88,025		0.74		\$116.89		\$ 7,614,039		\$ 956,833		\$ 8,570,873	\$ 532,983	120
Tallahassee-St. Marks Historic Railroad	179,326		0.74		\$116.89		\$ 15,511,448		\$ 384,165		\$ 15,895,613	\$ 1,085,801	223
Tarkiln Bayou	40,932		0.74		\$116.89		\$ 3,540,561		\$ 4,886		\$ 3,545,446	\$ 247,839	50
Three Rivers	30,637		0.74		\$116.89		\$ 2,650,058		\$ 265,948		\$ 2,916,005	\$ 185,504	41
Topsail Hill	213,693		0.74		\$116.89		\$ 18,484,145		\$ 1,049,536		\$ 19,533,681	\$ 1,293,890	273
Torrey	31,662		0.74		\$116.89		\$ 2,738,719		\$ 479,732		\$ 3,218,451	\$ 191,710	45
Yellow River Marsh	6,525		0.74		\$116.89		\$ 564,403		\$ 14,204		\$ 578,608	\$ 39,508	8
District 1 Administration									\$ 2,592,765		\$ 2,592,765		36
DISTRICT 1 TOTAL	3,134,284						\$ 271,111,178		\$ 16,052,522		\$ 287,163,700	18,977,782	4,020

*Non-local ratio average derived from the 2006 Florida State Park Visitor Study.

**Per person per day visitor expenditure data is provided by Visit Florida.

***16 jobs per \$1 million in total expenditures in local area [Thomas, C., Huber, C. & Koontz, L. 2012 *National Park Visitor Spending Effects: Economic Contributions to Local Communities, States, and the Nation*. Fort Collins, Colorado: U.S. Geological Survey & National Park Service].

**STATE PARK SYSTEM DIRECT ECONOMIC IMPACT ASSESSMENT
FISCAL YEAR 2019-2020
DISTRICT 2**

PARK	PARK ANNUAL ATTENDANCE	X	AVERAGE NON-LOCAL VISITOR PERCENT*	X	AVERAGE PER-PERSON/DAY EXPENDITURE**	=	VISITOR EXPENDITURES IN LOCAL AREA	+	FY 19/20 EXPENDITURES	=	TOTAL DIRECT ECONOMIC IMPACT	INCREASED STATE SALES TAX REVENUE ON VISITOR EXPENDITURES (7%)	TOTAL JOBS SUPPORTED ***
Amelia Island	92,966		0.74		\$ 116.89		\$ 8,041,429		\$ 102,075		\$ 8,143,504	\$ 562,900	114
Big Shoals	11,722		0.74		\$ 116.89		\$ 1,013,937		\$ 122,408		\$ 1,136,344	\$ 70,976	16
Big Talbot Island	353,010		0.74		\$ 116.89		\$ 30,534,871		\$ 46,318		\$ 30,581,189	\$ 2,137,441	428
Cedar Key Museum	5,596		0.74		\$ 116.89		\$ 484,046		\$ 54,134		\$ 538,181	\$ 33,883	8
Cedar Key Scrub	10,940		0.74		\$ 116.89		\$ 946,295		\$ -		\$ 946,295	\$ 66,241	13
Crystal River Archaeological	58,427		0.74		\$ 116.89		\$ 5,053,854		\$ 209,689		\$ 5,263,543	\$ 353,770	74
Crystal River Preserve	133,789		0.74		\$ 116.89		\$ 11,572,561		\$ 307,787		\$ 11,880,348	\$ 810,079	166
Devil's Millhopper	53,686		0.74		\$ 116.89		\$ 4,643,764		\$ 132,003		\$ 4,775,767	\$ 325,063	67
Dudley Farm	15,552		0.74		\$ 116.89		\$ 1,345,226		\$ 161,997		\$ 1,507,224	\$ 94,166	21
Ellie Schiller Homosassa Springs	228,004		0.74		\$ 116.89		\$ 19,722,027		\$ 1,715,381		\$ 21,437,408	\$ 1,380,542	300
Fanning Springs	179,322		0.74		\$ 116.89		\$ 15,511,102		\$ 264,146		\$ 15,775,248	\$ 1,085,777	221
Forest Capital	2,589		0.74		\$ 116.89		\$ 223,945		\$ 78,182		\$ 302,127	\$ 15,676	4
Fort Clinch (includes Fernandina Plaza)	244,272		0.74		\$ 116.89		\$ 21,129,186		\$ 888,738		\$ 22,017,924	\$ 1,479,043	308
Fort Cooper	68,883		0.74		\$ 116.89		\$ 5,958,283		\$ 218,575		\$ 6,176,858	\$ 417,080	86
Fort George Island	60,325		0.74		\$ 116.89		\$ 5,218,028		\$ 145,233		\$ 5,363,262	\$ 365,262	75
Gainesville to Hawthorne Trail	18,913		0.74		\$ 116.89		\$ 1,635,948		\$ -		\$ 1,635,948	\$ 114,516	23
George Crady Bridge Fishing Pier	252,620		0.74		\$ 116.89		\$ 21,851,276		\$ -		\$ 21,851,276	\$ 1,529,589	306
Gilchrist Blue Springs	97,736		0.74		\$ 116.89		\$ 8,454,027		\$ 324,584		\$ 8,778,611	\$ 591,782	123
Ichetucknee Springs	245,298		0.74		\$ 116.89		\$ 21,217,934		\$ 1,451,800		\$ 22,669,734	\$ 1,485,255	317
Ichetucknee Trace	-		0.74		\$ 116.89		\$ -		\$ -		\$ -	\$ -	0
Lafayette Blue Springs	15,280		0.74		\$ 116.89		\$ 1,321,699		\$ 325,332		\$ 1,647,030	\$ 92,519	23
Little Talbot Island	106,933		0.74		\$ 116.89		\$ 9,249,555		\$ 720,196		\$ 9,969,751	\$ 647,469	140
Madison Blue Spring	16,327		0.74		\$ 116.89		\$ 1,412,263		\$ 137,640		\$ 1,549,902	\$ 98,858	22
Manatee Springs (includes Anderson's Land	174,642		0.74		\$ 116.89		\$ 15,106,289		\$ 696,246		\$ 15,802,535	\$ 1,057,440	221
Marjorie Kinnan Rawlings	13,544		0.74		\$ 116.89		\$ 1,171,537		\$ 215,428		\$ 1,386,965	\$ 82,008	19
Mike Roess Gold Head Branch (excludes Sig	72,098		0.74		\$ 116.89		\$ 6,236,376		\$ 858,104		\$ 7,094,480	\$ 436,546	99
Nature & Heritage Tourism Center	-		0.74		\$ 116.89		\$ -		\$ -		\$ -	\$ -	0
Nature Coast Trail	115,697		0.74		\$ 116.89		\$ 10,007,629		\$ 119,695		\$ 10,127,324	\$ 700,534	142
O'Leno	77,755		0.74		\$ 116.89		\$ 6,725,699		\$ 378,039		\$ 7,103,738	\$ 470,799	99
Olustee Battlefield	23,888		0.74		\$ 116.89		\$ 2,066,279		\$ 75,354		\$ 2,141,633	\$ 144,639	30
Palatka-Lake Butler Trail	73,611		0.74		\$ 116.89		\$ 6,367,248		\$ 108,178		\$ 6,475,426	\$ 445,707	91
Paynes Prairie (includes Price's Scrub)	144,363		0.74		\$ 116.89		\$ 12,487,197		\$ 903,867		\$ 13,391,064	\$ 874,104	187
Peacock Springs	13,896		0.74		\$ 116.89		\$ 1,201,985		\$ 73,278		\$ 1,275,262	\$ 84,139	18
Pumpkin Hill Creek	27,351		0.74		\$ 116.89		\$ 2,365,823		\$ 181,644		\$ 2,547,467	\$ 165,608	36
Rainbow Springs	249,959		0.74		\$ 116.89		\$ 21,621,104		\$ 842,977		\$ 22,464,081	\$ 1,513,477	314
River Rise	11,544		0.74		\$ 116.89		\$ 998,540		\$ -		\$ 998,540	\$ 69,898	14
San Felasco Hammock	42,441		0.74		\$ 116.89		\$ 3,671,087		\$ 134,492		\$ 3,805,579	\$ 256,976	53
Stephen Foster	58,536		0.74		\$ 116.89		\$ 5,063,282		\$ 1,096,895		\$ 6,160,177	\$ 354,430	86
Suwannee River	34,522		0.74		\$ 116.89		\$ 2,986,105		\$ 370,633		\$ 3,356,738	\$ 209,027	47
Suwannee River Wilderness Trail	3,257		0.74		\$ 116.89		\$ 281,726		\$ 89,291		\$ 371,017	\$ 19,721	5
Troy Spring	11,354		0.74		\$ 116.89		\$ 982,105		\$ 79,493		\$ 1,061,598	\$ 68,747	15
Waccasassa Bay	67,571		0.74		\$ 116.89		\$ 5,844,797		\$ 142,412		\$ 5,987,209	\$ 409,136	84
Withlacoochee Trail	344,503		0.74		\$ 116.89		\$ 29,799,027		\$ 137,294		\$ 29,936,321	\$ 2,085,932	419
Yellow Bluff Fort	527		0.74		\$ 116.89		\$ 45,585		\$ -		\$ 45,585	\$ 3,191	1
Yulee Sugar Mill Ruins	42,292		0.74		\$ 116.89		\$ 3,658,199		\$ -		\$ 3,658,199	\$ 256,074	51
District 2 Administration									\$ 2,217,810		\$ 2,217,810	\$ -	31
DISTRICT 2 TOTAL	3,875,541						\$ 335,228,871		\$ 16,127,350		\$ 351,356,220	\$ 23,466,021	4,919

*Non-local ratio average derived from the 2006 Florida State Park Visitor Study.

**Per person per day visitor expenditure data is provided by Visit Florida.

***16 full-time jobs per one million dollars in total new expenditures in the local area. Source: [Thomas, C., Huber, C. & Koontz, L. 2012 National Park Visitor Spending Effects: Economic Contributions to Local Communities, States, and the Nation. Fort Collins, Colorado: U.S. Geological Survey & National Park Service]

**STATE PARK SYSTEM DIRECT ECONOMIC IMPACT ASSESSMENT
FISCAL YEAR 2019-2020
DISTRICT 3**

PARK	PARK ANNUAL ATTENDANCE	AVERAGE NON-LOCAL VISITOR PERCENT*	AVERAGE PER-PERSON/DAY EXPENDITURE**	VISITOR EXPENDITURES IN LOCAL AREA	FY 19/20 EXPENDITURES	TOTAL DIRECT ECONOMIC IMPACT	INCREASED STATE SALES TAX REVENUE ON VISITOR EXPENDITURES (7%)	TOTAL JOBS SUPPORTED ***
	X	X	=	+	=	=		***
A.D. Broussard Catfish Creek	3,458	0.74	\$ 116.89	\$ 299,112	\$ 64,676	\$ 363,788	\$ 20,938	5
Anastasia	750,872	0.74	\$ 116.89	\$ 64,949,377	\$ 1,994,847	\$ 66,944,224	\$ 4,546,456	937
Blue Spring	485,423	0.74	\$ 116.89	\$ 41,988,410	\$ 900,314	\$ 42,888,724	\$ 2,939,189	600
Bulow Creek	138,420	0.74	\$ 116.89	\$ 11,973,136	\$ -	\$ 11,973,136	\$ 838,120	168
Bulow Plantation Ruins	31,407	0.74	\$ 116.89	\$ 2,716,662	\$ 54,989	\$ 2,771,651	\$ 190,166	39
Colt Creek	45,747	0.74	\$ 116.89	\$ 3,957,051	\$ 383,516	\$ 4,340,568	\$ 276,994	61
Cross Florida Greenway	2,956,374	0.74	\$ 116.89	\$ 255,722,212	\$ 3,227,446	\$ 258,949,658	\$ 17,900,555	3,625
De Leon Springs	179,880	0.74	\$ 116.89	\$ 15,559,368	\$ 554,617	\$ 16,113,985	\$ 1,089,156	226
Dunns Creek	42,568	0.74	\$ 116.89	\$ 3,682,072	\$ 191,910	\$ 3,873,982	\$ 257,745	54
Faver-Dykes	30,338	0.74	\$ 116.89	\$ 2,624,195	\$ 589,138	\$ 3,213,333	\$ 183,694	45
Fort Mose	68,369	0.74	\$ 116.89	\$ 5,913,823	\$ 25,990	\$ 5,939,813	\$ 413,968	83
Gamble Rogers - Flagler Beach	136,902	0.74	\$ 116.89	\$ 11,841,831	\$ 1,291,457	\$ 13,133,288	\$ 828,928	184
Haw Creek	4,935	0.74	\$ 116.89	\$ 426,871	\$ -	\$ 426,871	\$ 29,881	6
Hontoon Island	30,815	0.74	\$ 116.89	\$ 2,665,454	\$ 245,621	\$ 2,911,075	\$ 186,582	41
Indian River Lagoon	-	0.74	\$ 116.89	\$ -	\$ -	\$ -	\$ -	0
Kissimmee Prairie	28,318	0.74	\$ 116.89	\$ 2,449,467	\$ 701,667	\$ 3,151,135	\$ 171,463	44
Lake Griffin	45,310	0.74	\$ 116.89	\$ 3,919,252	\$ 349,467	\$ 4,268,719	\$ 274,348	60
Lake Kissimmee	59,160	0.74	\$ 116.89	\$ 5,117,257	\$ 852,203	\$ 5,969,460	\$ 358,208	84
Lake Louisa	150,060	0.74	\$ 116.89	\$ 12,979,980	\$ 875,094	\$ 13,855,074	\$ 908,599	194
Lower Wekiva River	32,526	0.74	\$ 116.89	\$ 2,813,453	\$ -	\$ 2,813,453	\$ 196,942	39
North Peninsula	266,396	0.74	\$ 116.89	\$ 23,042,881	\$ -	\$ 23,042,881	\$ 1,613,002	323
Okeechobee Battlefield	3,557	0.74	\$ 116.89	\$ 307,676	\$ -	\$ 307,676	\$ 21,537	4
Palatka-St. Augustine Rail Trail	104,681	0.74	\$ 116.89	\$ 9,054,760	\$ 28,478	\$ 9,083,238	\$ 633,833	127
Ravine Gardens	178,030	0.74	\$ 116.89	\$ 15,399,346	\$ 758,641	\$ 16,157,987	\$ 1,077,954	226
Rock Springs Run	38,530	0.74	\$ 116.89	\$ 3,332,791	\$ 81,890	\$ 3,414,681	\$ 233,295	48
Sebastian Inlet	584,327	0.74	\$ 116.89	\$ 50,543,467	\$ 1,466,301	\$ 52,009,768	\$ 3,538,043	728
Silver Springs	308,741	0.74	\$ 116.89	\$ 26,705,664	\$ 1,439,396	\$ 28,145,061	\$ 1,869,396	394
St. Sebastian River	56,674	0.74	\$ 116.89	\$ 4,902,222	\$ 553,540	\$ 5,455,762	\$ 343,156	76
Tomoka (includes Addison Blockhouse)	166,486	0.74	\$ 116.89	\$ 14,400,806	\$ 850,730	\$ 15,251,536	\$ 1,008,056	214
Van Fleet Trail	15,074	0.74	\$ 116.89	\$ 1,303,880	\$ 169,047	\$ 1,472,927	\$ 91,272	21
Washington Oaks	103,970	0.74	\$ 116.89	\$ 8,993,259	\$ 704,803	\$ 9,698,062	\$ 629,528	136
Wekiwa Springs	324,127	0.74	\$ 116.89	\$ 28,036,532	\$ 1,493,156	\$ 29,529,688	\$ 1,962,557	413
District 3 Administration					\$ 2,364,517	\$ 2,364,517		33
DISTRICT 3 TOTAL	7,371,475			\$ 637,622,267	\$ 22,213,453	\$ 659,835,720	44,633,559	9,238

*Non-local ratio average derived from the 2006 Florida State Park Visitor Study.

**Per person per day visitor expenditure data is provided by Visit Florida.

***16 jobs per \$1 million in total expenditures in local area [Thomas, C., Huber, C. & Koontz, L. 2012 *National Park Visitor Spending Effects: Economic Contributions to Local Communities, States, and the Nation*. Fort Collins, Colorado: U.S. Geological Survey & National Park Service].

in this report.

**STATE PARK SYSTEM DIRECT ECONOMIC IMPACT ASSESSMENT
FISCAL YEAR 2019-2020
DISTRICT 4**

PARK	PARK ANNUAL ATTENDANCE	X	AVERAGE NON-LOCAL VISITOR PERCENT*	X	AVERAGE PER-PERSON/DAY EXPENDITURE**	=	VISITOR EXPENDITURES IN LOCAL AREA	+	FY 19/20 EXPENDITURES	=	TOTAL DIRECT ECONOMIC IMPACT	INCREASED STATE SALES TAX REVENUE ON VISITOR EXPENDITURES (7%)	TOTAL JOBS SUPPORTED ***
Alafia River	132,571		0.74		\$ 116.89		\$ 11,467,206		\$ 461,752		\$ 11,928,958	\$ 802,704	167
Anclote Key	155,785		0.74		\$ 116.89		\$ 13,475,184		\$ 75,111		\$ 13,550,295	\$ 943,263	190
Caladesi Island	161,930		0.74		\$ 116.89		\$ 14,006,718		\$ 335,545		\$ 14,342,264	\$ 980,470	201
Cayo Costa	121,835		0.74		\$ 116.89		\$ 10,538,557		\$ 451,257		\$ 10,989,814	\$ 737,699	154
Charlotte Harbor	242,504		0.74		\$ 116.89		\$ 20,976,256		\$ 444,338		\$ 21,420,594	\$ 1,468,338	300
Cockroach Bay	-		0.74		\$ 116.89		\$ -		\$ -		\$ -	\$ -	0
Collier-Seminole	64,304		0.74		\$ 116.89		\$ 5,562,206		\$ 1,666,536		\$ 7,228,742	\$ 389,354	101
Dade Battlefield	38,725		0.74		\$ 116.89		\$ 3,349,658		\$ 284,689		\$ 3,634,347	\$ 234,476	51
Delnor-Wiggins Pass	477,776		0.74		\$ 116.89		\$ 41,326,955		\$ 770,952		\$ 42,097,907	\$ 2,892,887	589
Don Pedro Island	75,407		0.74		\$ 116.89		\$ 6,522,600		\$ 99,092		\$ 6,621,692	\$ 456,582	93
Egmont Key	218,668		0.74		\$ 116.89		\$ 18,914,476		\$ 48,988		\$ 18,963,464	\$ 1,324,013	265
Estero Bay	22,654		0.74		\$ 116.89		\$ 1,959,539		\$ 116,558		\$ 2,076,097	\$ 137,168	29
Fakahatchee Strand	40,211		0.74		\$ 116.89		\$ 3,478,195		\$ 694,942		\$ 4,173,137	\$ 243,474	58
Gasparilla Island	256,660		0.74		\$ 116.89		\$ 22,200,731		\$ 389,123		\$ 22,589,854	\$ 1,554,051	316
Highlands Hammock	147,488		0.74		\$ 116.89		\$ 12,757,506		\$ 909,184		\$ 13,666,690	\$ 893,025	191
Hillsborough River	191,328		0.74		\$ 116.89		\$ 16,549,604		\$ 1,156,687		\$ 17,706,291	\$ 1,158,472	248
Honeymoon Island	1,252,866		0.74		\$ 116.89		\$ 108,371,155		\$ 1,387,441		\$ 109,758,596	\$ 7,585,981	1,537
J. P. Benjamin - Gamble Plantation	50,241		0.74		\$ 116.89		\$ 4,345,776		\$ 399,639		\$ 4,745,415	\$ 304,204	66
Koreshan	107,143		0.74		\$ 116.89		\$ 9,267,719		\$ 699,983		\$ 9,967,703	\$ 648,740	140
Lake June-in-Winter Scrub	7,567		0.74		\$ 116.89		\$ 654,535		\$ 67,436		\$ 721,971	\$ 45,817	10
Lake Manatee	54,612		0.74		\$ 116.89		\$ 4,723,862		\$ 400,303		\$ 5,124,165	\$ 330,670	72
Little Manatee River	53,500		0.74		\$ 116.89		\$ 4,627,675		\$ 730,661		\$ 5,358,336	\$ 323,937	75
Lovers Key	758,572		0.74		\$ 116.89		\$ 65,615,416		\$ 3,035,410		\$ 68,650,826	\$ 4,593,079	961
Madira Bickel Mound	381		0.74		\$ 116.89		\$ 32,956		\$ -		\$ 32,956	\$ 2,307	0
Mound Key	1,591		0.74		\$ 116.89		\$ 137,619		\$ -		\$ 137,619	\$ 9,633	2
Myakka River	301,852		0.74		\$ 116.89		\$ 26,109,775		\$ 2,282,643		\$ 28,392,418	\$ 1,827,684	397
Oscar Scherer	120,706		0.74		\$ 116.89		\$ 10,440,900		\$ 1,284,510		\$ 11,725,410	\$ 730,863	164
Paynes Creek	10,265		0.74		\$ 116.89		\$ 887,908		\$ 286,955		\$ 1,174,863	\$ 62,154	16
Skyway Fishing Pier	176,371		0.74		\$ 116.89		\$ 15,255,845		\$ -		\$ 15,255,845	\$ 1,067,909	214
South Fork (formerly Beker)	-		0.74		\$ 116.89		\$ -		\$ -		\$ -	\$ -	0
Stump Pass Beach	89,839		0.74		\$ 116.89		\$ 7,770,948		\$ 89,794		\$ 7,860,742	\$ 543,966	110
Terra Ceia	1,647		0.74		\$ 116.89		\$ 142,463		\$ 152,455		\$ 294,918	\$ 9,972	4
Weeki Wachee Springs	178,061		0.74		\$ 116.89		\$ 15,402,027		\$ 3,104,645		\$ 18,506,672	\$ 1,078,142	259
Werner-Boyce Salt Springs	15,383		0.74		\$ 116.89		\$ 1,330,608		\$ 317,134		\$ 1,647,742	\$ 93,143	23
Wingate Creek (formerly Beker)	46		0.74		\$ 116.89		\$ 3,979		\$ -		\$ 3,979	\$ 279	0
Ybor City	9,760		0.74		\$ 116.89		\$ 844,226		\$ 146,448		\$ 990,675	\$ 59,096	14
District 4 Administration									\$ 1,345,877		\$ 1,345,877	\$ -	19
DISTRICT 4 TOTAL	5,538,249						\$ 479,050,785		\$ 23,636,089		\$ 502,686,874	\$33,533,555	7,038

*Non-local ratio average derived from the 2006 Florida State Park Visitor Study.

**Per person per day visitor expenditure data is provided by Visit Florida.

***16 jobs per \$1 million in total expenditures in local area [Thomas, C., Huber, C. & Koontz, L. 2012 *National Park Visitor Spending Effects: Economic Contributions to Local Communities, States, and the Nation*. Fort Collins, Colorado: U.S. Geological Survey & National Park Service].

**STATE PARK SYSTEM DIRECT ECONOMIC IMPACT ASSESSMENT
FISCAL YEAR 2019-2020
DISTRICT 5**

PARK	PARK ANNUAL ATTENDANCE	AVERAGE NON-LOCAL VISITOR PERCENT*	AVERAGE PER-PERSON/DAY EXPENDITURE**	VISITOR EXPENDITURES IN LOCAL AREA	FY 19/20 EXPENDITURES	TOTAL DIRECT ECONOMIC IMPACT	INCREASED STATE SALES TAX REVENUE ON VISITOR EXPENDITURES (7%)	TOTAL JOBS SUPPORTED ***
	X	X	=	+	=	=		
Atlantic Ridge	6,039	0.74	\$ 116.89	\$ 522,365	\$ 124,734	\$ 647,099	\$ 36,566	9
Avalon	159,423	0.74	\$ 116.89	\$ 13,789,866	\$ 147,734	\$ 13,937,601	\$ 965,291	195
Bahia Honda	359,134	0.74	\$ 116.89	\$ 31,064,588	\$ 5,531,343	\$ 36,595,932	\$ 2,174,521	512
Bill Baggs Cape Florida	406,057	0.74	\$ 116.89	\$ 35,123,362	\$ 1,172,831	\$ 36,296,193	\$ 2,458,635	508
Curry Hammock	65,976	0.74	\$ 116.89	\$ 5,706,832	\$ 588,655	\$ 6,295,486	\$ 399,478	88
Dagny Johnson Key Largo Hammock	19,041	0.74	\$ 116.89	\$ 1,647,020	\$ 762,505	\$ 2,409,525	\$ 115,291	34
Florida Keys Overseas Heritage Trail	1,378,791	0.74	\$ 116.89	\$ 119,263,491	\$ 453,090	\$ 119,716,581	\$ 8,348,444	1,676
Fort Pierce Inlet (includes Jack Island)	207,243	0.74	\$ 116.89	\$ 17,926,229	\$ 786,268	\$ 18,712,497	\$ 1,254,836	262
Fort Zachary Taylor	492,028	0.74	\$ 116.89	\$ 42,559,733	\$ 754,645	\$ 43,314,378	\$ 2,979,181	606
Hugh Taylor Birch	285,725	0.74	\$ 116.89	\$ 24,714,812	\$ 899,006	\$ 25,613,818	\$ 1,730,037	359
Indian Key	13,788	0.74	\$ 116.89	\$ 1,192,643	\$ -	\$ 1,192,643	\$ 83,485	17
John D. MacArthur Beach	99,526	0.74	\$ 116.89	\$ 8,608,860	\$ 737,005	\$ 9,345,864	\$ 602,620	131
John Pennekamp Coral Reef	377,293	0.74	\$ 116.89	\$ 32,635,316	\$ 1,657,552	\$ 34,292,869	\$ 2,284,472	480
John U. Lloyd Beach	210,299	0.74	\$ 116.89	\$ 18,190,569	\$ 1,098,017	\$ 19,288,586	\$ 1,273,340	270
Jonathan Dickinson	255,101	0.74	\$ 116.89	\$ 22,065,879	\$ 1,488,715	\$ 23,554,595	\$ 1,544,612	330
Lignumvitae Key	56,587	0.74	\$ 116.89	\$ 4,894,696	\$ 1,184,250	\$ 6,078,946	\$ 342,629	85
Long Key	31,699	0.74	\$ 116.89	\$ 2,741,919	\$ 707,091	\$ 3,449,010	\$ 191,934	48
Oleta River	241,625	0.74	\$ 116.89	\$ 20,900,224	\$ 974,106	\$ 21,874,331	\$ 1,463,016	306
San Pedro	20,866	0.74	\$ 116.89	\$ 1,804,880	\$ -	\$ 1,804,880	\$ 126,342	25
Savannas	46,954	0.74	\$ 116.89	\$ 4,061,455	\$ 623,080	\$ 4,684,535	\$ 284,302	66
Seabranh	43,810	0.74	\$ 116.89	\$ 3,789,504	\$ -	\$ 3,789,504	\$ 265,265	53
St. Lucie Inlet	9,596	0.74	\$ 116.89	\$ 830,041	\$ 363,830	\$ 1,193,871	\$ 58,103	17
The Barnacle	119,544	0.74	\$ 116.89	\$ 10,340,389	\$ 328,398	\$ 10,668,786	\$ 723,827	149
Windley Key Fossil Reef	11,273	0.74	\$ 116.89	\$ 975,099	\$ 140,620	\$ 1,115,718	\$ 68,257	16
District 5 Administration					\$ 1,320,307	\$ 1,320,307	\$	18
DISTRICT 5 TOTAL	4,917,418			\$ 425,349,773	\$ 21,843,781	\$ 447,193,554	\$ 29,774,484	6,261

*Non-local ratio average derived from the 2006 Florida State Park Visitor Study.

**Per person per day visitor expenditure data is provided by Visit Florida.

***16 jobs per \$1 million in total expenditures in local area [Thomas, C., Huber, C. & Koontz, L. 2012 *National Park Visitor Spending Effects: Economic Contributions to Local Communities, States, and the Nation*. Fort Collins, Colorado: U.S. Geological Survey & National Park Service].