



# FLORIDA DEPARTMENT OF Environmental Protection

Marjory Stoneman Douglas Building  
3900 Commonwealth Boulevard  
Tallahassee, FL 32399


**Ron DeSantis**  
Governor

**Jeanette Nuñez**  
Lt. Governor

**Shawn Hamilton**  
Secretary

## Memorandum

**TO:** INTERESTED PARTIES

**FROM:** Steven A. Cutshaw, Chief, Office of Park Planning 

**SUBJECT:** 2020-2021 Economic Impact Assessment Report  
Florida State Park System

**DATE:** October 19, 2021

Attached is the annual Economic Impact Assessment Report for Fiscal Year 2020/2021 Economic Impact Assessment for the Florida State Park System.

The Division of Recreation and Parks has generated the annual report since 1994. Numerous models and software exist to assess economic impact. To assess the economic impact of state parks and greenways and trails on Florida's economy, the Division of Recreation and Parks uses information from the National Park Service and Visit Florida, as well as Division of Recreation and Parks' data on annual park expenditures and attendance. This report is an estimate of economic benefits in the local area around a park.

If you have questions concerning the data found in the attached report, please contact the Office of Park Planning at 850.245.3051.

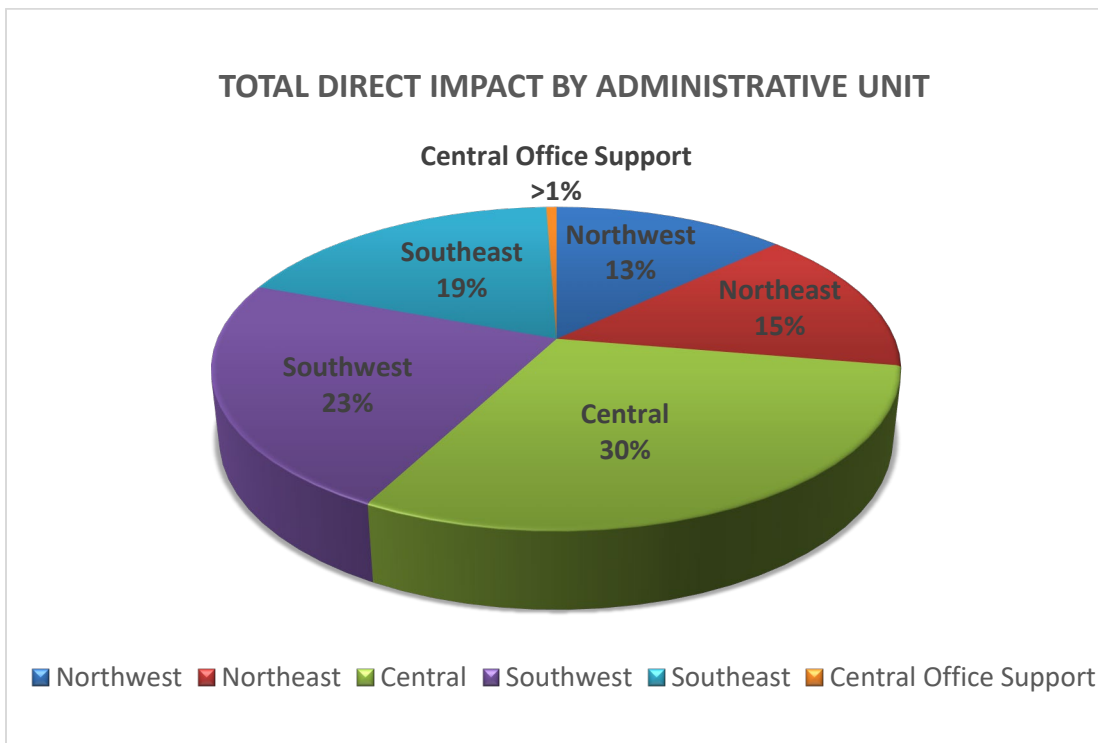
SC/dpd  
Attachment

## FISCAL YEAR 2020-2021 FLORIDA STATE PARK SYSTEM – ECONOMIC IMPACT ASSESSMENT

### Summary of Data

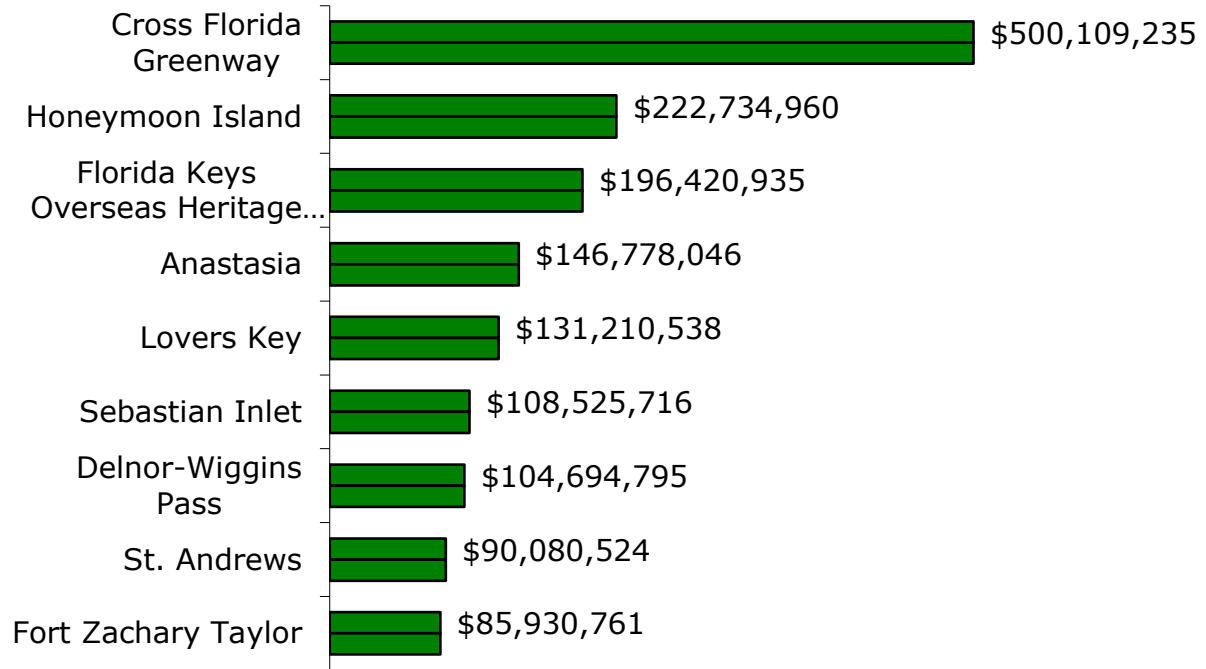
Based on Fiscal Year (FY) 2020-2021 data, a total of 29,076,725 Florida residents and visitors enjoyed our award-winning system of state parks and trails. This year the estimated total economic impact of Florida State Parks is over \$4.4 Billion in direct economic impact, generating over \$300 Million in increased sales tax revenue. In addition, 61,983 jobs were supported by state park operations. The implication of this data is that for every 1,000 persons visiting a state park in Florida, the total direct impact on the local community is approximately \$80,092.

| <b>FY 2020-2021 DIRECT ECONOMIC IMPACT BY ADMINISTRATIVE UNIT</b> |                            |                                  |                       |
|---|----------------------------|----------------------------------|-----------------------|
| <b>ADMINISTRATIVE UNIT</b>  | <b>TOTAL DIRECT IMPACT</b> | <b>INCREASED STATE SALES TAX</b> | <b>JOBS SUPPORTED</b> |
| CENTRAL   | \$ 1,332,315,805           | \$ 91,743,107                    | 18,652                |
| CENTRAL OFFICE SUPPORT  | \$ 25,752,809              | \$                               | 412                   |
| NORTHEAST   | \$ 646,690,650             | \$ 44,046,670                    | 9,054                 |
| NORTHWEST   | \$ 577,433,207             | \$ 39,147,932                    | 8,084                 |
| SOUTHEAST   | \$ 826,774,217             | \$ 56,546,352                    | 11,575                |
| SOUTHWEST   | \$ 1,018,413,465           | \$ 69,500,519                    | 14,258                |
| STATEWIDE   | \$ 4,427,380,152           | \$ 300,984,579                   | 61,983                |



**FISCAL YEAR 2020-2021**  
**FLORIDA STATE PARK SYSTEM – ECONOMIC IMPACT ASSESSMENT**

**PARKS AND TRAILS WITH GREATEST  
DIRECT ECONOMIC IMPACT**



The ten units with the greatest direct economic impacts in the state are shown above. The economic impacts of these parks are due to many factors, including geographic location and available amenities.

**FISCAL YEAR 2020-2021**  
**FLORIDA STATE PARK SYSTEM – ECONOMIC IMPACT ASSESSMENT**

**Definition of Terms**

1. Total Direct Economic Impact: The number of new dollars spent in a local economy by non-local park visitors and park operations.
2. Increased State Sales Tax: The estimated amount of tax dollars the state receives from park visitor expenditures.
3. Total Jobs Supported: This may be any combination of seasonal, temporary, part-time or full-time employment that adds up to 16 full-time jobs per one million dollars in total new expenditures in the local area. Source: [Thomas, C., Huber, C. & Koontz, L. 2012 National Park Visitor Spending Effects: Economic Contributions to Local Communities, States, and the Nation. Fort Collins, Colorado: U.S. Geological Survey & National Park Service]
4. Park Annual Attendance: The total attendance which occurred during the 12-month FY 2020-2021. Source: DEP Bureau of Operational Services.
5. Non-Local Visitor Percentage: The percentage of visitors to a state park unit that are not from the local area. “Impact” is a measure of new dollars introduced to a community.
6. Average Per-Person Per-Day Expenditure: For the purposes of this assessment, the average per-person, per-day expenditure is defined as “the average amount that residents and non-residents traveling by automobile will spend, per-person, per-day in Florida”. The spending categories include transportation, food (grocery & restaurant), and lodging. State park-specific data on this factor is not available. The information on visitor expenditures for this assessment is based on the 2020 annual data from VISIT FLORIDA.
7. FY 2020-2021 Expenditures: Total expenditures (salaries/benefits, operating expenses, and fixed capital expenditures) made by the park or administrative unit during the 12-month FY 2020-2021. Source: DEP Bureau of Finance and Accounting.

**STATE PARK SYSTEM DIRECT ECONOMIC IMPACT ASSESSMENT  
FISCAL YEAR 2020-2021  
STATEWIDE TOTAL**

| DISTRICT               | PARK ANNUAL ATTENDANCE | AVERAGE NON-LOCAL VISITOR PERCENT*<br><b>x</b> | AVERAGE PER-PERSON/DAY EXPENDITURE**<br><b>=</b> | VISITOR EXPENDITURES IN LOCAL AREA<br><b>+</b> | FY 20/21 EXPENDITURES<br><b>=</b> | TOTAL DIRECT ECONOMIC IMPACT | INCREASED STATE SALES TAX REVENUE ON VISITOR EXPENDITURES (7%) | TOTAL JOBS SUPPORTED<br><b>***</b> |
|------------------------|------------------------|--|--|--|-----------------------------------|------------------------------|--|------------------------------------|
| DISTRICT 1             | 3,746,352              |  |  | \$ 559,256,176                                 | \$ 18,177,031                     | \$ 577,433,207               | \$ 39,147,932  | 8,084                              |
| DISTRICT 2             | 4,488,457              |  |  | \$ 670,037,759                                 | \$ 17,452,514                     | \$ 687,490,273               | \$ 46,902,643  | 9,625                              |
| DISTRICT 3             | 8,779,569              |  |  | \$ 1,310,615,816                               | \$ 21,699,988                     | \$ 1,332,315,805             | \$ 91,743,107  | 18,652                             |
| DISTRICT 4             | 6,651,013              |  |  | \$ 992,864,551                                 | \$ 25,548,914                     | \$ 1,018,413,465             | \$ 69,500,519  | 14,258                             |
| DISTRICT 5             | 5,411,334              |  |  | \$ 807,805,022                                 | \$ 18,969,195                     | \$ 826,774,217               | \$ 56,546,352  | 11,575                             |
| CENTRAL OFFICE SUPPORT | 0                      |  |  | \$   | \$ 25,752,809                     | \$ 25,752,809                | \$   | 412                                |
| STATEWIDE              | 29,076,725             |  |  | \$ 4,340,579,323                               | \$ 127,600,451                    | \$ 4,468,179,775             | \$ 303,840,553   | 62,555                             |

\*Non-local ratio average derived from the 2006 Florida State Park Visitor Study.

\*\*Per person per day visitor expenditure data is provided by Visit Florida.

\*14 jobs per \$1 million in total expenditures in local area [Thomas, C., Huber, C. & Koontz, L. 2012 *National Park Visitor Spending Effects: Economic Contributions to Local Communities, States, and the Nation*. Fort Collins, Colorado: U.S. Geological Survey & National Park Service].

**STATE PARK SYSTEM DIRECT ECONOMIC IMPACT ASSESSMENT  
FISCAL YEAR 2020-2021  
DISTRICT 1**

| PARK                                       | PARK ANNUAL ATTENDANCE | X | AVERAGE NON-LOCAL VISITOR PERCENT* | X | AVERAGE PER-PERSON/DAY EXPENDITURE** | = | VISITOR EXPENDITURES IN LOCAL AREA | + | FY 20/21 EXPENDITURES | = | TOTAL DIRECT ECONOMIC IMPACT | INCREASED STATE SALES TAX REVENUE ON VISITOR EXPENDITURES (7%) | TOTAL JOBS SUPPORTED *** |
|--|------------------------|---|------------------------------------|---|--------------------------------------|---|------------------------------------|---|-----------------------|---|------------------------------|--|--------------------------|
|  |                        |   |                                    |   |                                      |   |                                    |   |                       |   |                              |  |                          |
| Alfred B. Maclay Gardens                   | 112,419                |   | 0.74                               |   | \$ 201.73                            |   | \$ 16,781,931                      |   | \$ 905,572            |   | \$ 17,687,503                | \$ 1,174,735   | 248                      |
| Bald Point                                 | 42,042                 |   | 0.74                               |   | \$ 201.73                            |   | \$ 6,276,038                       |   | \$ 149,242            |   | \$ 6,425,280                 | \$ 439,323   | 90                       |
| Big Lagoon                                 | 126,853                |   | 0.74                               |   | \$ 201.73                            |   | \$ 18,936,641                      |   | \$ 856,548            |   | \$ 19,793,189                | \$ 1,325,565   | 277                      |
| Blackwater Heritage Trail                  | 150,931                |   | 0.74                               |   | \$ 201.73                            |   | \$ 22,531,010                      |   | \$ 101,375            |   | \$ 22,632,385                | \$ 1,577,171   | 317                      |
| Blackwater River                           | 83,139                 |   | 0.74                               |   | \$ 201.73                            |   | \$ 12,411,007                      |   | \$ 310,135            |   | \$ 12,721,141                | \$ 868,770   | 178                      |
| Camp Helen                                 | 44,919                 |   | 0.74                               |   | \$ 201.73                            |   | \$ 6,705,517                       |   | \$ 291,505            |   | \$ 6,997,022                 | \$ 469,386   | 98                       |
| Constitution Convention                    | 165                    |   | 0.74                               |   | \$ 201.73                            |   | \$ 24,631                          |   | \$ 72,650             |   | \$ 97,281                    | \$ 1,724   | 1                        |
| Deer Lake                                  | 23,286                 |   | 0.74                               |   | \$ 201.73                            |   | \$ 3,476,139                       |   | \$ 77,940             |   | \$ 3,554,079                 | \$ 243,330   | 50                       |
| Dr. Julian G. Bruce St. George Island      | 246,312                |   | 0.74                               |   | \$ 201.73                            |   | \$ 36,769,505                      |   | \$ 779,991            |   | \$ 37,549,496                | \$ 2,573,865   | 526                      |
| Econfinia River                            | 14,202                 |   | 0.74                               |   | \$ 201.73                            |   | \$ 2,120,077                       |   | \$ 5,297              |   | \$ 2,125,374                 | \$ 148,405   | 30                       |
| Eden Gardens                               | 35,224                 |   | 0.74                               |   | \$ 201.73                            |   | \$ 5,258,246                       |   | \$ 121,918            |   | \$ 5,380,164                 | \$ 368,077   | 75                       |
| Edward Ball Wakulla Springs                | 139,397                |   | 0.74                               |   | \$ 201.73                            |   | \$ 20,809,212                      |   | \$ 1,123,463          |   | \$ 21,932,675                | \$ 1,456,645   | 307                      |
| Falling Waters                             | 76,026                 |   | 0.74                               |   | \$ 201.73                            |   | \$ 11,349,176                      |   | \$ 346,568            |   | \$ 11,695,745                | \$ 794,442   | 164                      |
| Florida Caverns                            | 49,851                 |   | 0.74                               |   | \$ 201.73                            |   | \$ 7,441,767                       |   | \$ 668,369            |   | \$ 8,110,136                 | \$ 520,924   | 114                      |
| Fred Gannon Rocky Bayou                    | 109,815                |   | 0.74                               |   | \$ 201.73                            |   | \$ 16,393,205                      |   | \$ 340,613            |   | \$ 16,733,819                | \$ 1,147,524   | 234                      |
| Grayton Beach                              | 310,797                |   | 0.74                               |   | \$ 201.73                            |   | \$ 46,395,838                      |   | \$ 1,334,845          |   | \$ 47,730,684                | \$ 3,247,709   | 668                      |
| Henderson Beach                            | 541,662                |   | 0.74                               |   | \$ 201.73                            |   | \$ 80,859,412                      |   | \$ 909,238            |   | \$ 81,768,650                | \$ 5,660,159   | 1,145                    |
| John Gorrie Museum                         | 55                     |   | 0.74                               |   | \$ 201.73                            |   | \$ 8,210                           |   | \$ 17,949             |   | \$ 26,160                    | \$ 575   | 0                        |
| Lake Jackson Mounds                        | 21,240                 |   | 0.74                               |   | \$ 201.73                            |   | \$ 3,170,711                       |   | \$ 229,118            |   | \$ 3,399,830                 | \$ 221,950   | 48                       |
| Lake Talquin (includes Yellow River Bluff) | 10,020                 |   | 0.74                               |   | \$ 201.73                            |   | \$ 1,495,788                       |   | \$ 604,577            |   | \$ 2,100,365                 | \$ 104,705   | 29                       |
| Letchworth-Love Mounds                     | 7,263                  |   | 0.74                               |   | \$ 201.73                            |   | \$ 1,084,222                       |   | \$ 59,978             |   | \$ 1,144,200                 | \$ 75,896  | 16                       |
| Natural Bridge Battlefield                 | 2,172                  |   | 0.74                               |   | \$ 201.73                            |   | \$ 324,237                         |   | \$ 55,400             |   | \$ 379,636                   | \$ 22,697  | 5                        |
| Ochlockonee River                          | 42,630                 |   | 0.74                               |   | \$ 201.73                            |   | \$ 6,363,815                       |   | \$ 424,065            |   | \$ 6,787,880                 | \$ 445,467   | 95                       |
| Orman House                                | 1,951                  |   | 0.74                               |   | \$ 201.73                            |   | \$ 291,246                         |   | \$ 35,505             |   | \$ 326,750                   | \$ 20,387  | 5                        |
| Perdido Key                                | 131,617                |   | 0.74                               |   | \$ 201.73                            |   | \$ 19,647,812                      |   | \$ 96,466             |   | \$ 19,744,279                | \$ 1,375,347   | 276                      |
| Ponce de Leon Springs                      | 95,347                 |   | 0.74                               |   | \$ 201.73                            |   | \$ 14,233,419                      |   | \$ 140,853            |   | \$ 14,374,272                | \$ 996,339   | 201                      |
| San Marcos de Apalache                     | 592                    |   | 0.74                               |   | \$ 201.73                            |   | \$ 88,374                          |   | \$ 131,347            |   | \$ 219,720                   | \$ 6,186   | 3                        |
| St. Andrews                                | 587,057                |   | 0.74                               |   | \$ 201.73                            |   | \$ 87,635,986                      |   | \$ 2,444,538          |   | \$ 90,080,524                | \$ 6,134,519   | 1,261                    |
| St. Marks River Preserve                   | -                      |   | 0.74                               |   | \$ 201.73                            |   | \$ -                               |   | \$ -                  |   | \$ -                         | \$ -   | 0                        |
| T.H. Stone Memorial St. Joseph             | 112,517                |   | 0.74                               |   | \$ 201.73                            |   | \$ 16,796,560                      |   | \$ 666,469            |   | \$ 17,463,030                | \$ 1,175,759   | 244                      |
| Tallahassee-St. Marks Historic Railroad    | 213,982                |   | 0.74                               |   | \$ 201.73                            |   | \$ 31,943,276                      |   | \$ 346,914            |   | \$ 32,290,190                | \$ 2,236,029   | 452                      |
| Tarkiln Bayou                              | 53,418                 |   | 0.74                               |   | \$ 201.73                            |   | \$ 7,974,250                       |   | \$ 2,991              |   | \$ 7,977,240                 | \$ 558,197   | 112                      |
| Three Rivers                               | 45,232                 |   | 0.74                               |   | \$ 201.73                            |   | \$ 6,752,242                       |   | \$ 258,873            |   | \$ 7,011,115                 | \$ 472,657   | 98                       |
| Topsail Hill                               | 251,862                |   | 0.74                               |   | \$ 201.73                            |   | \$ 37,598,010                      |   | \$ 1,063,388          |   | \$ 38,661,398                | \$ 2,631,861   | 541                      |
| Torreya                                    | 52,102                 |   | 0.74                               |   | \$ 201.73                            |   | \$ 7,777,797                       |   | \$ 544,507            |   | \$ 8,322,304                 | \$ 544,446   | 117                      |
| Yellow River Marsh                         | 10,255                 |   | 0.74                               |   | \$ 201.73                            |   | \$ 1,530,868                       |   | \$ 99,929             |   | \$ 1,630,797                 | \$ 107,161   | 23                       |
| District 1 Administration                  |                        |   |                                    |   |                                      |   |                                    |   | \$ 2,558,893          |   | \$ 2,558,893                 |  | 36                       |
| <b>DISTRICT 1 TOTAL</b>                    | <b>3,746,352</b>       |   |                                    |   |                                      |   | <b>\$ 559,256,176</b>              |   | <b>\$ 18,177,031</b>  |   | <b>\$ 577,433,207</b>        | <b>39,147,932</b>  | <b>8,084</b>             |

\*Non-local ratio average derived from the 2006 Florida State Park Visitor Study.

\*\*Per person per day visitor expenditure data is provided by Visit Florida.

\*\*\*16 jobs per \$1 million in total expenditures in local area [Thomas, C., Huber, C. & Koontz, L. 2012 *National Park Visitor Spending Effects: Economic Contributions to Local Communities, States, and the Nation*. Fort Collins, Colorado: U.S. Geological Survey & National Park Service].

**STATE PARK SYSTEM DIRECT ECONOMIC IMPACT ASSESSMENT  
FISCAL YEAR 2020-2021  
DISTRICT 2**

| PARK   | PARK ANNUAL ATTENDANCE | AVERAGE NON-LOCAL VISITOR PERCENT* | AVERAGE PER-PERSON/DAY EXPENDITURE** | VISITOR EXPENDITURES IN LOCAL AREA | FY 20/21 EXPENDITURES | TOTAL DIRECT ECONOMIC IMPACT | INCREASED STATE SALES TAX REVENUE ON VISITOR EXPENDITURES (7%) | TOTAL JOBS SUPPORTED *** |
|--|------------------------|------------------------------------|--------------------------------------|------------------------------------|-----------------------|------------------------------|--|--------------------------|
|  | X                      | X                                  | =                                    | +                                  | =                     |                              |  | ***                      |
| Amelia Island                                    | 114,416                | 0.74                               | \$ 201.73                            | \$ 17,080,043                      | \$ 102,131            | \$ 17,182,174                | \$ 1,195,603   | 241                      |
| Big Shoals                                       | 24,752                 | 0.74                               | \$ 201.73                            | \$ 3,694,984                       | \$ 80,787             | \$ 3,775,771                 | \$ 258,649   | 53                       |
| Big Talbot Island                                | 393,970                | 0.74                               | \$ 201.73                            | \$ 58,811,920                      | \$ 46,721             | \$ 58,858,642                | \$ 4,116,834   | 824                      |
| Cedar Key Museum                                 | 140                    | 0.74                               | \$ 201.73                            | \$ 20,899                          | \$ 84,718             | \$ 105,617                   | \$ 1,463   | 1                        |
| Cedar Key Scrub                                  | 12,028                 | 0.74                               | \$ 201.73                            | \$ 1,795,542                       | \$ -                  | \$ 1,795,542                 | \$ 125,688   | 25                       |
| Crystal River Archaeological                     | 77,173                 | 0.74                               | \$ 201.73                            | \$ 11,520,401                      | \$ 219,159            | \$ 11,739,560                | \$ 806,428   | 164                      |
| Crystal River Preserve                           | 229,574                | 0.74                               | \$ 201.73                            | \$ 34,270,853                      | \$ 347,597            | \$ 34,618,450                | \$ 2,398,960   | 485                      |
| Devil's Millhopper                               | 24,734                 | 0.74                               | \$ 201.73                            | \$ 3,692,296                       | \$ 161,846            | \$ 3,854,143                 | \$ 258,461   | 54                       |
| Dudley Farm                                      | 15,860                 | 0.74                               | \$ 201.73                            | \$ 2,367,584                       | \$ 460,871            | \$ 2,828,455                 | \$ 165,731   | 40                       |
| Ellie Schiller Homosassa Springs                 | 184,034                | 0.74                               | \$ 201.73                            | \$ 27,472,632                      | \$ 2,262,615          | \$ 29,735,247                | \$ 1,923,084   | 416                      |
| Fanning Springs                                  | 78,066                 | 0.74                               | \$ 201.73                            | \$ 11,653,708                      | \$ 402,088            | \$ 12,055,796                | \$ 815,760   | 169                      |
| Forest Capital                                   | 1,045                  | 0.74                               | \$ 201.73                            | \$ 155,998                         | \$ 86,964             | \$ 242,962                   | \$ 10,920  | 3                        |
| Fort Clinch (includes Fernandina Plaza)          | 328,710                | 0.74                               | \$ 201.73                            | \$ 49,069,895                      | \$ 975,119            | \$ 50,045,014                | \$ 3,434,893   | 701                      |
| Fort Cooper                                      | 96,083                 | 0.74                               | \$ 201.73                            | \$ 14,343,289                      | \$ 253,430            | \$ 14,596,720                | \$ 1,004,030   | 204                      |
| Fort George Island                               | 101,278                | 0.74                               | \$ 201.73                            | \$ 15,118,800                      | \$ 130,306            | \$ 15,249,107                | \$ 1,058,316   | 213                      |
| Gainesville to Hawthorne Trail                   | 23,465                 | 0.74                               | \$ 201.73                            | \$ 3,502,860                       | \$ -                  | \$ 3,502,860                 | \$ 245,200   | 49                       |
| George Crady Bridge Fishing Pier                 | 307,256                | 0.74                               | \$ 201.73                            | \$ 45,867,237                      | \$ -                  | \$ 45,867,237                | \$ 3,210,707   | 642                      |
| Gilchrist Blue Springs                           | 102,892                | 0.74                               | \$ 201.73                            | \$ 15,359,738                      | \$ 697,954            | \$ 16,057,692                | \$ 1,075,182   | 225                      |
| Ichetucknee Springs                              | 247,171                | 0.74                               | \$ 201.73                            | \$ 36,897,736                      | \$ 24,093             | \$ 36,921,829                | \$ 2,582,842   | 517                      |
| Ichetucknee Trace                                | -                      | 0.74                               | \$ 201.73                            | \$ -                               | \$ -                  | \$ -                         | \$ -   | 0                        |
| Lafayette Blue Springs                           | 11,736                 | 0.74                               | \$ 201.73                            | \$ 1,751,952                       | \$ 81,742             | \$ 1,833,694                 | \$ 122,637   | 26                       |
| Little Talbot Island                             | 104,498                | 0.74                               | \$ 201.73                            | \$ 15,599,482                      | \$ 704,879            | \$ 16,304,362                | \$ 1,091,964   | 228                      |
| Madison Blue Spring                              | 15,377                 | 0.74                               | \$ 201.73                            | \$ 2,295,482                       | \$ 141,048            | \$ 2,436,529                 | \$ 160,684   | 34                       |
| Manatee Springs (includes Anderson's Landing)    | 198,155                | 0.74                               | \$ 201.73                            | \$ 29,580,618                      | \$ 751,832            | \$ 30,332,450                | \$ 2,070,643   | 425                      |
| Marjorie Kinnan Rawlings                         | 17,087                 | 0.74                               | \$ 201.73                            | \$ 2,550,751                       | \$ 648,719            | \$ 3,199,470                 | \$ 178,553   | 45                       |
| Mike Roess Gold Head Branch (excludes Sign Shop) | 93,084                 | 0.74                               | \$ 201.73                            | \$ 13,895,598                      | \$ 877,098            | \$ 14,772,696                | \$ 972,692   | 207                      |
| Nature Coast Trail                               | 143,988                | 0.74                               | \$ 201.73                            | \$ 21,494,557                      | \$ 174,702            | \$ 21,669,259                | \$ 1,504,619   | 303                      |
| O'Leno   | 108,903                | 0.74                               | \$ 201.73                            | \$ 16,257,062                      | \$ 40,761             | \$ 16,297,822                | \$ 1,137,994   | 228                      |
| Olustee Battlefield                              | 20,847                 | 0.74                               | \$ 201.73                            | \$ 3,112,044                       | \$ 82,398             | \$ 3,194,442                 | \$ 217,843   | 45                       |
| Palatka-Lake Butler Trail                        | 72,467                 | 0.74                               | \$ 201.73                            | \$ 10,817,888                      | \$ 823,695            | \$ 11,641,583                | \$ 757,252   | 163                      |
| Paynes Prairie (includes Price's Scrub)          | 218,485                | 0.74                               | \$ 201.73                            | \$ 32,615,484                      | \$ 37,688             | \$ 32,653,173                | \$ 2,283,084   | 457                      |
| Peacock Springs                                  | 20,036                 | 0.74                               | \$ 201.73                            | \$ 2,990,978                       | \$ 65,388             | \$ 3,056,366                 | \$ 209,368   | 43                       |
| Pumpkin Hill Creek                               | 24,270                 | 0.74                               | \$ 201.73                            | \$ 3,623,030                       | \$ 199,210            | \$ 3,822,241                 | \$ 253,612   | 54                       |
| Rainbow Springs                                  | 273,309                | 0.74                               | \$ 201.73                            | \$ 40,799,622                      | \$ 315,498            | \$ 41,115,120                | \$ 2,855,974   | 576                      |
| River Rise                                       | 12,190                 | 0.74                               | \$ 201.73                            | \$ 1,819,726                       | \$ -                  | \$ 1,819,726                 | \$ 127,381   | 25                       |
| San Felasco Hammock                              | 52,790                 | 0.74                               | \$ 201.73                            | \$ 7,880,502                       | \$ 487,108            | \$ 8,367,609                 | \$ 551,635   | 117                      |
| Stephen Foster (includes Florida Folk Festival)  | 60,274                 | 0.74                               | \$ 201.73                            | \$ 8,997,715                       | \$ 1,088,120          | \$ 10,085,835                | \$ 629,840   | 141                      |
| Suwannee River                                   | 43,841                 | 0.74                               | \$ 201.73                            | \$ 6,544,593                       | \$ 359,701            | \$ 6,904,294                 | \$ 458,122   | 97                       |
| Suwannee River Wilderness Trail                  | 3,824                  | 0.74                               | \$ 201.73                            | \$ 570,847                         | \$ 96,041             | \$ 666,888                   | \$ 39,959  | 9                        |
| Troy Spring                                      | 9,534                  | 0.74                               | \$ 201.73                            | \$ 1,423,237                       | \$ 315,704            | \$ 1,738,942                 | \$ 99,627  | 24                       |
| Waccasassa Bay                                   | 71,935                 | 0.74                               | \$ 201.73                            | \$ 10,738,471                      | \$ 110,745            | \$ 10,849,216                | \$ 751,693   | 152                      |
| Withlacoochee Trail                              | 491,993                | 0.74                               | \$ 201.73                            | \$ 73,444,813                      | \$ 143,362            | \$ 73,588,176                | \$ 5,141,137   | 1,030                    |
| Yellow Bluff Fort                                | 498                    | 0.74                               | \$ 201.73                            | \$ 74,342                          | \$ -                  | \$ 74,342                    | \$ 5,204   | 1                        |
| Yulee Sugar Mill Ruins                           | 56,689                 | 0.74                               | \$ 201.73                            | \$ 8,462,545                       | \$ -                  | \$ 8,462,545                 | \$ 592,378   | 118                      |
| District 2 Administration                        |                        |                                    |                                      |                                    | \$ 2,814,882          | \$ 2,814,882                 | \$ -   | 39                       |
| <b>DISTRICT 2 TOTAL</b>                          | <b>4,488,457</b>       |                                    |                                      | <b>\$ 670,037,759</b>              | <b>\$ 16,696,720</b>  | <b>\$ 686,734,478</b>        | <b>\$ 46,902,643</b>   | <b>9,614</b>             |

\*Non-local ratio average derived from the 2006 Florida State Park Visitor Study.

\*\*Per person per day visitor expenditure data is provided by Visit Florida.

\*\*\*16 full-time jobs per one million dollars in total new expenditures in the local area. Source: [Thomas, C., Huber, C. & Koontz, L. 2012 National Park Visitor Spending Effects: Economic Contributions to Local Communities, States, and the Nation. Fort Collins, Colorado: U.S. Geological Survey & National Park Service]

**STATE PARK SYSTEM DIRECT ECONOMIC IMPACT ASSESSMENT  
FISCAL YEAR 2020-2021  
DISTRICT 3**

| PARK                                 | PARK ANNUAL ATTENDANCE | AVERAGE NON-LOCAL VISITOR PERCENT* | AVERAGE PER-PERSON/DAY EXPENDITURE** | VISITOR EXPENDITURES IN LOCAL AREA | FY 20/21 EXPENDITURES | TOTAL DIRECT ECONOMIC IMPACT | INCREASED STATE SALES TAX REVENUE ON VISITOR EXPENDITURES (7%) | TOTAL JOBS SUPPORTED *** |
|--------------------------------------|------------------------|------------------------------------|--------------------------------------|------------------------------------|-----------------------|------------------------------|--|--------------------------|
|                                      | X                      | X                                  | =                                    | +                                  | =                     | =                            |  | ***                      |
| A.D. Broussard Catfish Creek         | 4,021                  | 0.74                               | \$ 201.73                            | \$ 600,256                         | \$ 140,417            | \$ 740,673                   | \$ 42,018  | 10                       |
| Anastasia                            | 974,401                | 0.74                               | \$ 201.73                            | \$ 145,458,776                     | \$ 1,319,270          | \$ 146,778,046               | \$ 10,182,114  | 2,055                    |
| Blue Spring                          | 559,835                | 0.74                               | \$ 201.73                            | \$ 83,572,281                      | \$ 918,134            | \$ 84,490,415                | \$ 5,850,060   | 1,183                    |
| Bulow Creek                          | 164,408                | 0.74                               | \$ 201.73                            | \$ 24,542,859                      | \$ -                  | \$ 24,542,859                | \$ 1,718,000   | 344                      |
| Bulow Plantation Ruins               | 37,342                 | 0.74                               | \$ 201.73                            | \$ 5,574,421                       | \$ 57,154             | \$ 5,631,575                 | \$ 390,209   | 79                       |
| Colt Creek                           | 60,162                 | 0.74                               | \$ 201.73                            | \$ 8,980,995                       | \$ 447,779            | \$ 9,428,775                 | \$ 628,670   | 132                      |
| Cross Florida Greenway               | 3,327,418              | 0.74                               | \$ 201.73                            | \$ 496,717,625                     | \$ 3,391,611          | \$ 500,109,235               | \$ 34,770,234  | 7,002                    |
| De Leon Springs                      | 198,773                | 0.74                               | \$ 201.73                            | \$ 29,672,873                      | \$ 579,911            | \$ 30,252,784                | \$ 2,077,101   | 424                      |
| Dunns Creek                          | 31,554                 | 0.74                               | \$ 201.73                            | \$ 4,710,387                       | \$ 161,639            | \$ 4,872,026                 | \$ 329,727   | 68                       |
| Faver-Dykes                          | 39,179                 | 0.74                               | \$ 201.73                            | \$ 5,848,649                       | \$ 487,420            | \$ 6,336,069                 | \$ 409,405   | 89                       |
| Fort Mose                            | 88,170                 | 0.74                               | \$ 201.73                            | \$ 13,162,035                      | \$ 22,810             | \$ 13,184,845                | \$ 921,342   | 185                      |
| Gamble Rogers - Flagler Beach        | 186,684                | 0.74                               | \$ 201.73                            | \$ 27,868,225                      | \$ 685,461            | \$ 28,553,686                | \$ 1,950,776   | 400                      |
| Haw Creek                            | 5,145                  | 0.74                               | \$ 201.73                            | \$ 768,047                         | \$ -                  | \$ 768,047                   | \$ 53,763  | 11                       |
| Hontoon Island                       | 38,264                 | 0.74                               | \$ 201.73                            | \$ 5,712,058                       | \$ 233,625            | \$ 5,945,683                 | \$ 399,844   | 83                       |
| Indian River Lagoon                  | -                      | 0.74                               | \$ 201.73                            | \$ -                               | \$ -                  | \$ -                         | \$ -   | 0                        |
| Kissimmee Prairie                    | 44,393                 | 0.74                               | \$ 201.73                            | \$ 6,626,996                       | \$ 642,967            | \$ 7,269,963                 | \$ 463,890   | 102                      |
| Lake Griffin                         | 57,882                 | 0.74                               | \$ 201.73                            | \$ 8,640,637                       | \$ 356,058            | \$ 8,996,695                 | \$ 604,845   | 126                      |
| Lake Kissimmee                       | 76,629                 | 0.74                               | \$ 201.73                            | \$ 11,439,192                      | \$ 782,089            | \$ 12,221,281                | \$ 800,743   | 171                      |
| Lake Louisa                          | 198,759                | 0.74                               | \$ 201.73                            | \$ 29,670,783                      | \$ 840,999            | \$ 30,511,782                | \$ 2,076,955   | 427                      |
| Lower Wekiva River                   | 38,002                 | 0.74                               | \$ 201.73                            | \$ 5,672,946                       | \$ -                  | \$ 5,672,946                 | \$ 397,106   | 79                       |
| North Peninsula                      | 340,066                | 0.74                               | \$ 201.73                            | \$ 50,765,120                      | \$ -                  | \$ 50,765,120                | \$ 3,553,558   | 711                      |
| Okeechobee Battlefield               | 1,682                  | 0.74                               | \$ 201.73                            | \$ 251,089                         | \$ -                  | \$ 251,089                   | \$ 17,576  | 4                        |
| Palatka-St. Augustine Rail Trail     | 88,741                 | 0.74                               | \$ 201.73                            | \$ 13,247,274                      | \$ 28,000             | \$ 13,275,274                | \$ 927,309   | 186                      |
| Ravine Gardens                       | 329,930                | 0.74                               | \$ 201.73                            | \$ 49,252,016                      | \$ 853,014            | \$ 50,105,030                | \$ 3,447,641   | 701                      |
| Rock Springs Run                     | 42,589                 | 0.74                               | \$ 201.73                            | \$ 6,357,694                       | \$ 91,397             | \$ 6,449,091                 | \$ 445,039   | 90                       |
| Sebastian Inlet                      | 717,645                | 0.74                               | \$ 201.73                            | \$ 107,130,189                     | \$ 1,395,527          | \$ 108,525,716               | \$ 7,499,113   | 1,519                    |
| Silver Springs                       | 345,190                | 0.74                               | \$ 201.73                            | \$ 51,530,032                      | \$ 1,654,726          | \$ 53,184,758                | \$ 3,607,102   | 745                      |
| St. Sebastian River                  | 23,522                 | 0.74                               | \$ 201.73                            | \$ 3,511,369                       | \$ 647,199            | \$ 4,158,568                 | \$ 245,796   | 58                       |
| Tomoka (includes Addison Blockhouse) | 195,678                | 0.74                               | \$ 201.73                            | \$ 29,210,851                      | \$ 919,349            | \$ 30,130,200                | \$ 2,044,760   | 422                      |
| Van Fleet Trail                      | 25,597                 | 0.74                               | \$ 201.73                            | \$ 3,821,125                       | \$ 161,527            | \$ 3,982,652                 | \$ 267,479   | 56                       |
| Washington Oaks                      | 155,161                | 0.74                               | \$ 201.73                            | \$ 23,162,465                      | \$ 675,691            | \$ 23,838,157                | \$ 1,621,373   | 334                      |
| Wekiwa Springs                       | 382,747                | 0.74                               | \$ 201.73                            | \$ 57,136,549                      | \$ 1,348,211          | \$ 58,484,760                | \$ 3,999,558   | 819                      |
| District 3 Administration            |                        |                                    |                                      |                                    | \$ 2,858,004          | \$ 2,858,004                 |  | 40                       |
| <b>DISTRICT 3 TOTAL</b>              | <b>8,779,569</b>       |                                    |                                      | <b>\$ 1,310,615,816</b>            | <b>\$ 21,699,988</b>  | <b>\$ 1,332,315,805</b>      | <b>91,743,107</b>  | <b>18,652</b>            |

\*Non-local ratio average derived from the 2006 Florida State Park Visitor Study.

\*\*Per person per day visitor expenditure data is provided by Visit Florida.

\*\*\*16 jobs per \$1 million in total expenditures in local area [Thomas, C., Huber, C. & Koontz, L. 2012 *National Park Visitor Spending Effects: Economic Contributions to Local Communities, States, and the Nation*. Fort Collins, Colorado: U.S. Geological Survey & National Park Service].

in this report.



**STATE PARK SYSTEM DIRECT ECONOMIC IMPACT ASSESSMENT  
FISCAL YEAR 2020-2021  
DISTRICT 4**

| PARK                               | PARK ANNUAL ATTENDANCE | X | AVERAGE NON-LOCAL VISITOR PERCENT* | X | AVERAGE PER-PERSON/DAY EXPENDITURE** | = | VISITOR EXPENDITURES IN LOCAL AREA | + | FY 20/21 EXPENDITURES | = | TOTAL DIRECT ECONOMIC IMPACT | INCREASED STATE SALES TAX REVENUE ON VISITOR EXPENDITURES (7%) | TOTAL JOBS SUPPORTED *** |
|------------------------------------|------------------------|---|------------------------------------|---|--------------------------------------|---|------------------------------------|---|-----------------------|---|------------------------------|--|--------------------------|
| Alafia River                       | 176,579                |   | 0.74                               |   | \$ 201.73                            |   | \$ 26,359,748                      |   | \$ 468,096            |   | \$ 26,827,845                | \$ 1,845,182   | 376                      |
| Anclote Key                        | 199,604                |   | 0.74                               |   | \$ 201.73                            |   | \$ 29,796,925                      |   | \$ 88,780             |   | \$ 29,885,705                | \$ 2,085,785   | 418                      |
| Caladesi Island                    | 180,040                |   | 0.74                               |   | \$ 201.73                            |   | \$ 26,876,407                      |   | \$ 732,093            |   | \$ 27,608,500                | \$ 1,881,349   | 387                      |
| Cayo Costa                         | 141,863                |   | 0.74                               |   | \$ 201.73                            |   | \$ 21,177,337                      |   | \$ 671,297            |   | \$ 21,848,634                | \$ 1,482,414   | 306                      |
| Charlotte Harbor                   | 259,444                |   | 0.74                               |   | \$ 201.73                            |   | \$ 38,729,852                      |   | \$ 543,215            |   | \$ 39,273,067                | \$ 2,711,090   | 550                      |
| Cockroach Bay                      | -                      |   | 0.74                               |   | \$ 201.73                            |   | \$ -                               |   | \$ -                  |   | \$ -                         | \$ -   | 0                        |
| Collier-Seminole                   | 96,620                 |   | 0.74                               |   | \$ 201.73                            |   | \$ 14,423,453                      |   | \$ 811,958            |   | \$ 15,235,411                | \$ 1,009,642   | 213                      |
| Dade Battlefield                   | 40,442                 |   | 0.74                               |   | \$ 201.73                            |   | \$ 6,037,190                       |   | \$ 287,211            |   | \$ 6,324,401                 | \$ 422,603   | 89                       |
| DeInor-Wiggins Pass                | 695,854                |   | 0.74                               |   | \$ 201.73                            |   | \$ 103,877,224                     |   | \$ 817,571            |   | \$ 104,694,795               | \$ 7,271,406   | 1,466                    |
| Don Pedro Island                   | 90,159                 |   | 0.74                               |   | \$ 201.73                            |   | \$ 13,458,954                      |   | \$ 357,597            |   | \$ 13,816,550                | \$ 942,127   | 193                      |
| Egmont Key                         | 223,433                |   | 0.74                               |   | \$ 201.73                            |   | \$ 33,354,123                      |   | \$ 65,936             |   | \$ 33,420,059                | \$ 2,334,789   | 468                      |
| Estero Bay                         | 31,044                 |   | 0.74                               |   | \$ 201.73                            |   | \$ 4,634,255                       |   | \$ 129,515            |   | \$ 4,763,770                 | \$ 324,398   | 67                       |
| Fakahatchee Strand                 | 49,296                 |   | 0.74                               |   | \$ 201.73                            |   | \$ 7,358,917                       |   | \$ 393,370            |   | \$ 7,752,287                 | \$ 515,124   | 109                      |
| Gasparilla Island                  | 236,289                |   | 0.74                               |   | \$ 201.73                            |   | \$ 35,273,269                      |   | \$ 467,071            |   | \$ 35,740,340                | \$ 2,469,129   | 500                      |
| Highlands Hammock                  | 207,819                |   | 0.74                               |   | \$ 201.73                            |   | \$ 31,023,262                      |   | \$ 767,240            |   | \$ 31,790,502                | \$ 2,171,628   | 445                      |
| Hillsborough River                 | 237,500                |   | 0.74                               |   | \$ 201.73                            |   | \$ 35,454,048                      |   | \$ 1,128,832          |   | \$ 36,582,880                | \$ 2,481,783   | 512                      |
| Honeymoon Island                   | 1,482,075              |   | 0.74                               |   | \$ 201.73                            |   | \$ 221,244,452                     |   | \$ 1,490,507          |   | \$ 222,734,960               | \$ 15,487,112  | 3,118                    |
| J. P. Benjamin - Gamble Plantation | 13,633                 |   | 0.74                               |   | \$ 201.73                            |   | \$ 2,035,137                       |   | \$ 945,763            |   | \$ 2,980,900                 | \$ 142,460   | 42                       |
| Koreshan                           | 334,488                |   | 0.74                               |   | \$ 201.73                            |   | \$ 49,932,436                      |   | \$ 1,896,643          |   | \$ 51,829,078                | \$ 3,495,270   | 726                      |
| Lake June-in-Winter Scrub          | 14,885                 |   | 0.74                               |   | \$ 201.73                            |   | \$ 2,222,036                       |   | \$ 70,317             |   | \$ 2,292,353                 | \$ 155,543   | 32                       |
| Lake Manatee                       | 72,473                 |   | 0.74                               |   | \$ 201.73                            |   | \$ 10,818,784                      |   | \$ 479,073            |   | \$ 11,297,857                | \$ 757,315   | 158                      |
| Little Manatee River               | 68,427                 |   | 0.74                               |   | \$ 201.73                            |   | \$ 10,214,796                      |   | \$ 380,807            |   | \$ 10,595,603                | \$ 715,036   | 148                      |
| Lovers Key                         | 874,255                |   | 0.74                               |   | \$ 201.73                            |   | \$ 130,508,961                     |   | \$ 701,577            |   | \$ 131,210,538               | \$ 9,135,627   | 1,837                    |
| Madira Bickel Mound                | 291                    |   | 0.74                               |   | \$ 201.73                            |   | \$ 43,441                          |   | \$ -                  |   | \$ 43,441                    | \$ 3,041   | 1                        |
| Mound Key                          | 3,906                  |   | 0.74                               |   | \$ 201.73                            |   | \$ 583,088                         |   | \$ -                  |   | \$ 583,088                   | \$ 40,816  | 8                        |
| Myakka River                       | 363,535                |   | 0.74                               |   | \$ 201.73                            |   | \$ 54,268,578                      |   | \$ 4,459,647          |   | \$ 58,728,225                | \$ 3,798,800   | 822                      |
| Oscar Scherer                      | 191,139                |   | 0.74                               |   | \$ 201.73                            |   | \$ 28,533,268                      |   | \$ 1,444,348          |   | \$ 29,977,616                | \$ 1,997,329   | 420                      |
| Paynes Creek                       | 8,273                  |   | 0.74                               |   | \$ 201.73                            |   | \$ 1,234,995                       |   | \$ 261,531            |   | \$ 1,496,526                 | \$ 86,450  | 21                       |
| Skyway Fishing Pier                | 79,122                 |   | 0.74                               |   | \$ 201.73                            |   | \$ 11,811,348                      |   | \$ -                  |   | \$ 11,811,348                | \$ 826,794   | 165                      |
| South Fork (formerly Beker)        | -                      |   | 0.74                               |   | \$ 201.73                            |   | \$ -                               |   | \$ -                  |   | \$ -                         | \$ -   | 0                        |
| Stump Pass Beach                   | 130,957                |   | 0.74                               |   | \$ 201.73                            |   | \$ 19,549,287                      |   | \$ 182,055            |   | \$ 19,731,342                | \$ 1,368,450   | 276                      |
| Terra Ceia                         | -                      |   | 0.74                               |   | \$ 201.73                            |   | \$ -                               |   | \$ 68,072             |   | \$ 68,072                    | \$ -   | 1                        |
| Weeki Wachee Springs               | 123,757                |   | 0.74                               |   | \$ 201.73                            |   | \$ 18,474,470                      |   | \$ 1,987,537          |   | \$ 20,462,006                | \$ 1,293,213   | 286                      |
| Werner-Boyce Salt Springs          | 19,626                 |   | 0.74                               |   | \$ 201.73                            |   | \$ 2,929,773                       |   | \$ 1,626,316          |   | \$ 4,556,089                 | \$ 205,084   | 64                       |
| Wingate Creek (formerly Beker)     | 102                    |   | 0.74                               |   | \$ 201.73                            |   | \$ 15,227                          |   | \$ -                  |   | \$ 15,227                    | \$ 1,066   | 0                        |
| Ybor City                          | 4,083                  |   | 0.74                               |   | \$ 201.73                            |   | \$ 609,511                         |   | \$ 158,879            |   | \$ 768,390                   | \$ 42,666  | 11                       |
| District 4 Administration          |                        |   |                                    |   |                                      |   |                                    |   | \$ 1,666,060          |   | \$ 1,666,060                 | \$ -   | 23                       |
| <b>DISTRICT 4 TOTAL</b>            | <b>6,651,013</b>       |   |                                    |   |                                      |   | <b>\$ 992,864,551</b>              |   | <b>\$ 25,548,914</b>  |   | <b>\$ 1,018,413,465</b>      | <b>\$69,500,519</b>  | <b>14,258</b>            |

\*Non-local ratio average derived from the 2006 Florida State Park Visitor Study.

\*\*Per person per day visitor expenditure data is provided by Visit Florida.

\*\*\*16 jobs per \$1 million in total expenditures in local area [Thomas, C., Huber, C. & Koontz, L. 2012 National Park Visitor Spending Effects: Economic Contributions to Local Communities, States, and the Nation. Fort Collins, Colorado: U.S. Geological Survey & National Park Service].

**STATE PARK SYSTEM DIRECT ECONOMIC IMPACT ASSESSMENT  
FISCAL YEAR 2020-2021  
DISTRICT 5**

| PARK                                     | PARK ANNUAL ATTENDANCE | AVERAGE NON-LOCAL VISITOR PERCENT* | AVERAGE PER-PERSON/DAY EXPENDITURE** | VISITOR EXPENDITURES IN LOCAL AREA | FY 20/21 EXPENDITURES | TOTAL DIRECT ECONOMIC IMPACT | INCREASED STATE SALES TAX REVENUE ON VISITOR EXPENDITURES (7%) | TOTAL JOBS SUPPORTED *** |
|--|------------------------|------------------------------------|--------------------------------------|------------------------------------|-----------------------|------------------------------|--|--------------------------|
| Atlantic Ridge                           | 18,042                 | 0.74                               | \$ 201.73                            | \$ 2,693,313                       | \$ 90,840             | \$ 2,784,153                 | \$ 188,532   | 39                       |
| Avalon                                   | 194,651                | 0.74                               | \$ 201.73                            | \$ 29,057,540                      | \$ 108,280            | \$ 29,165,820                | \$ 2,034,028   | 408                      |
| Bahia Honda                              | 406,951                | 0.74                               | \$ 201.73                            | \$ 60,749,727                      | \$ 2,455,237          | \$ 63,204,964                | \$ 4,252,481   | 885                      |
| Bill Baggs Cape Florida                  | 421,781                | 0.74                               | \$ 201.73                            | \$ 62,963,552                      | \$ 1,225,246          | \$ 64,188,798                | \$ 4,407,449   | 899                      |
| Curry Hammock                            | 76,593                 | 0.74                               | \$ 201.73                            | \$ 11,433,818                      | \$ 546,927            | \$ 11,980,745                | \$ 800,367   | 168                      |
| Dagny Johnson Key Largo Hammock          | 21,540                 | 0.74                               | \$ 201.73                            | \$ 3,215,496                       | \$ 114,980            | \$ 3,330,475                 | \$ 225,085   | 47                       |
| Florida Keys Overseas Heritage Trail     | 1,309,478              | 0.74                               | \$ 201.73                            | \$ 195,479,138                     | \$ 941,797            | \$ 196,420,935               | \$ 13,683,540  | 2,750                    |
| Fort Pierce Inlet (includes Jack Island) | 272,288                | 0.74                               | \$ 201.73                            | \$ 40,647,207                      | \$ 654,261            | \$ 41,301,468                | \$ 2,845,304   | 578                      |
| Fort Zachary Taylor                      | 570,567                | 0.74                               | \$ 201.73                            | \$ 85,174,356                      | \$ 756,405            | \$ 85,930,761                | \$ 5,962,205   | 1,203                    |
| Hugh Taylor Birch                        | 237,732                | 0.74                               | \$ 201.73                            | \$ 35,488,681                      | \$ 845,799            | \$ 36,334,480                | \$ 2,484,208   | 509                      |
| Indian Key                               | 22,478                 | 0.74                               | \$ 201.73                            | \$ 3,355,520                       | \$ -                  | \$ 3,355,520                 | \$ 234,886   | 47                       |
| John D. MacArthur Beach                  | 139,250                | 0.74                               | \$ 201.73                            | \$ 20,787,268                      | \$ 755,698            | \$ 21,542,966                | \$ 1,455,109   | 302                      |
| John Pennekamp Coral Reef                | 439,460                | 0.74                               | \$ 201.73                            | \$ 65,602,677                      | \$ 1,436,933          | \$ 67,039,609                | \$ 4,592,187   | 939                      |
| John U. Lloyd Beach                      | 309,085                | 0.74                               | \$ 201.73                            | \$ 46,140,271                      | \$ 1,107,593          | \$ 47,247,863                | \$ 3,229,819   | 661                      |
| Jonathan Dickinson                       | 283,118                | 0.74                               | \$ 201.73                            | \$ 42,263,912                      | \$ 1,512,608          | \$ 43,776,520                | \$ 2,958,474   | 613                      |
| Lignumvitae Key                          | 86,160                 | 0.74                               | \$ 201.73                            | \$ 12,861,982                      | \$ 1,056,091          | \$ 13,918,073                | \$ 900,339   | 195                      |
| Long Key                                 | 49,007                 | 0.74                               | \$ 201.73                            | \$ 7,315,775                       | \$ 829,584            | \$ 8,145,358                 | \$ 512,104   | 114                      |
| Oleta River                              | 315,231                | 0.74                               | \$ 201.73                            | \$ 47,057,747                      | \$ 1,446,050          | \$ 48,503,797                | \$ 3,294,042   | 679                      |
| San Pedro                                | 27,460                 | 0.74                               | \$ 201.73                            | \$ 4,099,234                       | \$ -                  | \$ 4,099,234                 | \$ 286,946   | 57                       |
| Savannas                                 | 47,853                 | 0.74                               | \$ 201.73                            | \$ 7,143,505                       | \$ 771,018            | \$ 7,914,523                 | \$ 500,045   | 111                      |
| Seabranck                                | 47,795                 | 0.74                               | \$ 201.73                            | \$ 7,134,847                       | \$ -                  | \$ 7,134,847                 | \$ 499,439   | 100                      |
| St. Lucie Inlet                          | 12,231                 | 0.74                               | \$ 201.73                            | \$ 1,825,846                       | \$ 362,370            | \$ 2,188,216                 | \$ 127,809   | 31                       |
| The Barnacle                             | 91,944                 | 0.74                               | \$ 201.73                            | \$ 13,725,419                      | \$ 264,988            | \$ 13,990,407                | \$ 960,779   | 196                      |
| Windley Key Fossil Reef                  | 10,639                 | 0.74                               | \$ 201.73                            | \$ 1,588,192                       | \$ 110,665            | \$ 1,698,857                 | \$ 111,173   | 24                       |
| District 5 Administration                |                        |                                    |                                      |                                    | \$ 1,575,825          | \$ 1,575,825                 | \$ -   | 22                       |
| <b>DISTRICT 5 TOTAL</b>                  | <b>5,411,334</b>       |                                    |                                      | <b>\$ 807,805,022</b>              | <b>\$ 18,969,195</b>  | <b>\$ 826,774,217</b>        | <b>\$ 56,546,352</b>   | <b>11,575</b>            |

\*Non-local ratio average derived from the 2006 Florida State Park Visitor Study.

\*\*Per person per day visitor expenditure data is provided by Visit Florida.

\*\*\*16 jobs per \$1 million in total expenditures in local area [Thomas, C., Huber, C. & Koontz, L. 2012 *National Park Visitor Spending Effects: Economic Contributions to Local Communities, States, and the Nation*. Fort Collins, Colorado: U.S. Geological Survey & National Park Service].

**STATE PARK SYSTEM DIRECT ECONOMIC IMPACT ASSESSMENT  
FISCAL YEAR 2020-2021  
CENTRAL OFFICE**

| PARK                        | PARK<br>ANNUAL<br>ATTENDANCE | X | AVERAGE<br>NON-LOCAL<br>VISITOR<br>PERCENT* | X | AVERAGE PER<br>PERSON/ DAY<br>EXPENDITURE** | = | VISITOR<br>EXPENDITURES<br>IN LOCAL AREA | + | FY 20/21<br>EXPENDITURES | = | TOTAL DIRECT<br>ECONOMIC<br>IMPACT | INCREASED<br>STATE SALES<br>TAX REVENUE ON<br>VISITOR<br>EXPENDITURES (7%) | TOTAL JOBS<br>SUPPORTED*** |
|-----------------------------|------------------------------|---|---|---|---|---|--|---|--------------------------|---|------------------------------------|--|----------------------------|
| Central Office Support      | -                            |   |   |   |   |   |  |   | \$ 25,752,809            |   | \$ 25,752,809                      | -  | 412                        |
| <b>CENTRAL OFFICE TOTAL</b> | -                            |   |   |   |   |   |  |   | \$ 25,752,809            |   | \$ 25,752,809                      | -  | 412                        |