

Florida Department of Environmental Protection

2021 Annual Air Monitoring Network Plan Addendum

Division of Air Resource Management
Office of Air Monitoring
September 2021

Florida Department of Environmental Protection
Division of Air Resource Management
2600 Blair Stone Road
Tallahassee, Florida 32399-2400
www.floridadep.gov



TABLE OF CONTENTS

1.0 INTRODUCTION..... 1

2.0 SITE SHUTDOWN..... 2

- MIAMI-DADE COUNTY – LAB ANNEX 2

3.0 MONITOR RELOCATION 3

- MIAMI-DADE – LAB ANNEX: CO AND NO₂ 3
 - *Photos and Aerial for the Miami Dade: Perimeter Near Road Site - AQS # 12-086-0035..... 5*
 - *Photos and Wind Rose for the Miami Dade: Pennsuco Site - AQS # 12-086-0019..... 9*

LIST OF TABLES

TABLE 1.1 SITE CLOSURES AND MONITOR RELOCATIONS..... 1

TABLE 3.1 PERIMETER NEAR ROAD SITE REVIEW INFORMATION..... 4

TABLE 3.2 PENNSUCO SITE REVIEW INFORMATION..... 8

LIST OF FIGURES

Figure 2.1: Damaged roof..... 2

Figure 2.2: Water damage from roof collapse 3

Figure 3.1 North from Perimeter Near Road Site..... 5

Figure 3.2 East from Perimeter Near Road Site 5

Figure 3.3 West from Perimeter Near Road 6

Figure 3.4 South from Perimeter Near Road 6

Figure 3.5 Aerial of Perimeter Near Road..... 7

Figure 3.6 North from Pennsuco Site 9

Figure 3.7 East from Pennsuco Site..... 9

Figure 3.8 West from Pennsuco Site..... 10

Figure 3.9 South from Pennsuco Site 10

Figure 3.10 Aerial of Pennsuco Site 11

1.0 Introduction

This addendum provides information to the USEPA Region 4 Air and Radiation Division to facilitate a full evaluation of the Lab Annex (AQS Site # 12-086-4002) site closure and relocation of the CO and NO₂ monitors within Florida's ambient air monitoring network. Table 1.1, below, provides a summary of each relocation.

Table 1.1 Site Closures and Monitor Relocations

AQS Site #	County	Site Name	Type	Pollutants	Area and Monitor in Attainment?	Modification
------------	--------	-----------	------	------------	---------------------------------	--------------

DRAFT

2.0 Site Shutdown

- Miami-Dade County – Lab Annex

The Miami-Dade County, Air Quality Management Division notified FDEP of a roof collapse at the Lab Annex site (AQS Site # 12-086-4002) on August 24, 2021. On August 26, 2021 FDEP was given EPA's support in the decision to remove Miami-Dade staff and monitoring equipment from the unsafe conditions at the site and a final shut-down was established on August 31, 2021. Images of the site damage are shown in Figures 2.1, and 2.2, below.



Figure 2.1: Damaged roof



Figure 1.2: Water damage from roof collapse

3.0 Monitor Relocation

- Miami-Dade – Lab Annex: CO and NO₂

DEP is requesting approval to relocate the CO and NO₂ monitors previously located at the Lab Annex site (AQS Site #: 12-095-0008) in Miami Dade County to the Perimeter Near Road site (AQS Site # 12-086-0035) and Pennsuco site (AQS Site #12-086-0019), respectively. Due to a roof collapse at the Lab Annex site reported on August 24, 2021 that provided unsafe conditions for staff and the monitoring equipment housed there, FDEP granted approval for the shutdown of the site.

The CO monitor will be relocated to the Perimeter Near Road site (AQS Site #12-086-0035), located approximately 6.5 miles (10,460.7 meters) Direction W of the current location. The site review information for the proposed location is presented in Table 3.1 and Figures 3.1 to 3.5, below.

The NO₂ monitor will be relocated to the Pennsuco site (AQS Site #12-086-0019), located approximately 15.8 miles (25,427.64 meters) Direction NW of the current location. The site review information for the proposed location is presented in Table 3.2 and Figures 3.6 to 3.10, below.

Table 3.1 Perimeter Near Road Site Review Information - AQS Site # 12-086-0035

AQS Site #	12-86-0035
City (CBSA)	Miami
Site Name	Perimeter Near Road
Statement of Purpose	Needed by Regulation
Site Review Date	9/28/2021
County	Miami-Dade
Location Latitude	25.7854722 N
Location Longitude	-80.2842055 W
Address	5600 Perimeter Road, Miami, FL 33126
Objective	High Concentration
Pollutants Monitored	CO
Sampling and Analysis Method	Teledyne 300E
Spatial Scale	Micro
Operating Schedule	Continuous
Network Type	SLAMS
Distance from Inlet to nearest:	Tree Dripline = 11.8 meters Road = 14.5 meters Wall = 21.0 meters
Access	Unlimited
Owner of Land	Miami Dade Expressway Authority (MDX)
Other Monitored Parameters	NO ₂
Inlet Height	4.78 meters
Comments	This new location meets the siting criteria outlined in 40 CFR Part 58 Appendix E. The relocation is expected by October 1, 2021.

*The site review was performed by Miami Dade staff.

➤ *Photos and Aerial for the Miami Dade: Perimeter Near Road Site - AOS # 12-086-0035*

Figure 3.1 North from Perimeter Near Road Site



Figure 3.2 East from Perimeter Near Road Site



Figure 3.3 West from Perimeter Near Road



Figure 3.4 South from Perimeter Near Road



Figure 3.5 Aerial of Perimeter Near Road

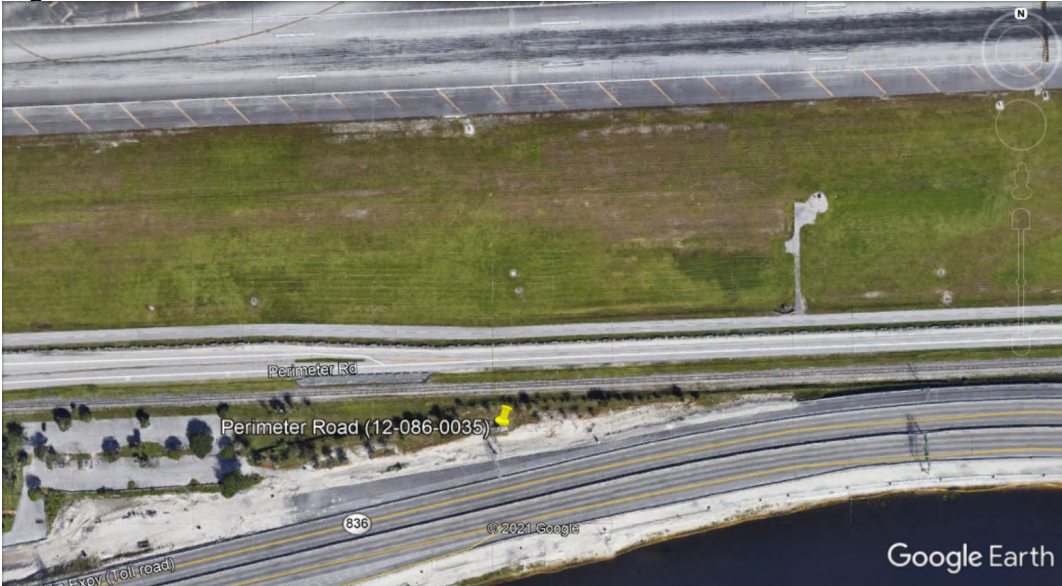


Table 3.2 Pennsuco Site Review Information - AQS Site # 12-086-0019

	Pennsuco Site
AQS Site #	12-86-0019
City (CBSA)	Miami
Site Name	Pennsuco
Statement of Purpose	Needed by Regulation
Site Review Date	9/28/2021
County	Miami-Dade
Location Latitude	25.899167 N
Location Longitude	-80.382778 W
Address	14001-14027 N Okeechobee Rd, Hialeah, FL 33018
Objective	High Concentration
Pollutants Monitored	NO ₂
Sampling and Analysis Method	Teledyne T200
Spatial Scale	Neighborhood
Operating Schedule	Continuous
Network Type	SLAMS
Distance from Inlet to nearest:	Tree Dripline = 17.0 meters Road = 37.0 meters Wall = 7.3 meters
Access	Unlimited
Owner of Land	Florida Department of Transportation
Other Monitored Parameters	SO ₂
Inlet Height	3.2 meters
Comments	This new location meets the siting criteria outlined in 40 CFR Part 58 Appendix E. The relocation is expected by October 1, 2021.

*The site review was performed by Miami-Dade staff.

➤ *Photos and Wind Rose for the Miami Dade: Pennsuco Site - AQS # 12-086-0019*

Figure 3.6 North from Pennsuco Site



Figure 3.7 East from Pennsuco Site



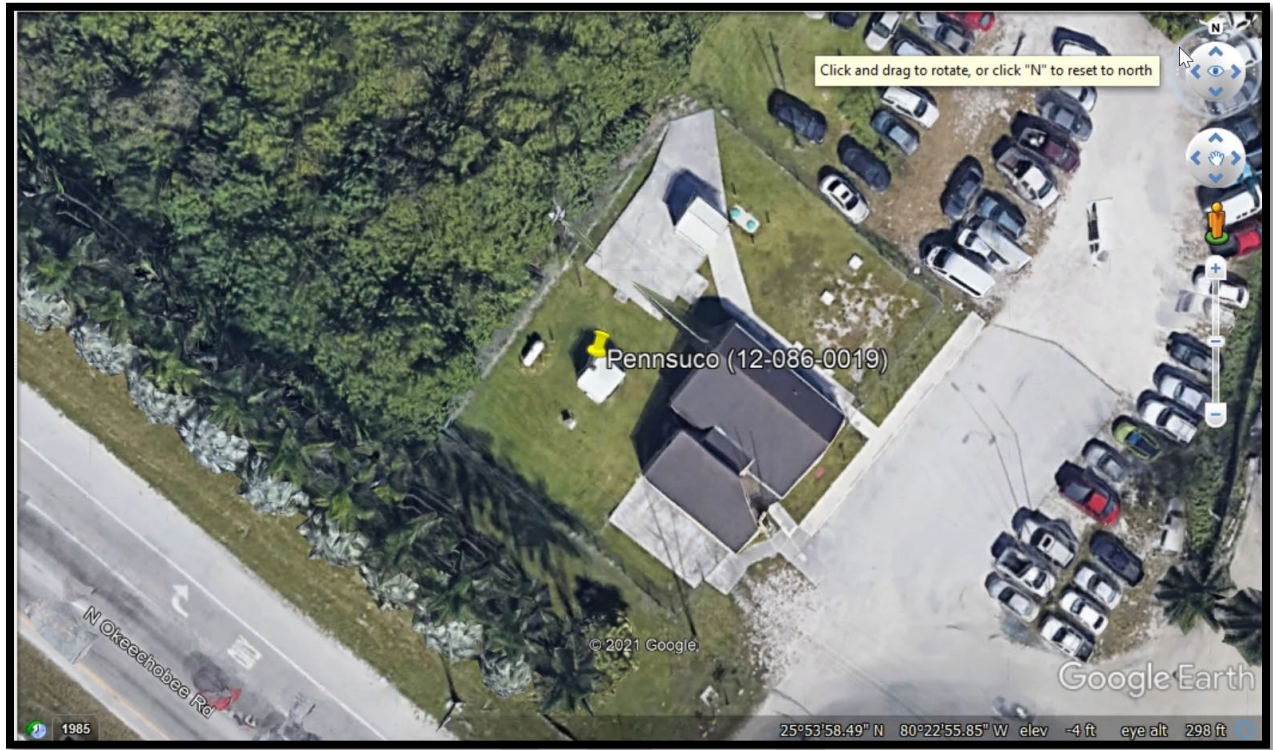
Figure 3.8 West from Pennsuco Site



Figure 3.91 South from Pennsuco Site



Figure 3.10 Aerial of Pennsuco Site



DRAFT