



**Florida Brownfields Redevelopment Program  
Annual Report  
Fiscal Year 2024-25**

**Division of Waste Management/Waste Cleanup Program  
Florida Department of Environmental Protection  
August 2025**



# FLORIDA DEPARTMENT OF Environmental Protection

**Ron DeSantis**  
Governor

**Alexis A. Lambert**  
Secretary

Marjory Stoneman Douglas Building  
3900 Commonwealth Boulevard  
Tallahassee, FL 32399

August 1, 2025

The Honorable Ben Albritton  
President, Florida Senate  
409 The Capitol  
404 S. Monroe Street  
Tallahassee, Florida 32399-1100

The Honorable Daniel Perez  
Speaker, Florida House of Representatives  
420 The Capitol  
402 S. Monroe Street  
Tallahassee, Florida 32399-1300

Dear President Albritton and Speaker Perez:

I am pleased to submit the Annual Report on the Brownfields Redevelopment Act, as required by section 376.85, Florida Statutes.

The Florida Brownfields Program facilitates redevelopment of properties and job creation within designated brownfield areas by providing incentives for voluntary environmental cleanup and protection of public health. The enclosed report is submitted each year to describe the Florida Department of Environmental Protection's (DEP) progress and level of activity in implementing the Florida Brownfields Redevelopment Act, established in 1997.

Highlights to date include the following:

- Since 1997, more than \$557 million in confirmed investment and 16,622 confirmed net new direct jobs can be attributed to the program.
- Fourteen brownfield sites completed cleanup in 2024, and five brownfield sites completed cleanup in the first six months of 2025. On average, since 1997, approximately nine brownfield sites complete cleanup each calendar year. There have been 252 brownfield sites that have completed cleanup since the inception of the program.
- There are 613 designated brownfield areas statewide, and as of June 30, 2025, there are 532 executed Brownfield Site Rehabilitation Agreements (BSRAs).
- DEP received 183 Voluntary Cleanup Tax Credit (VCTC) applications for 2024 calendar year expenses, and the approved tax credits totaled \$25.3 million. Of this total, \$24.7 million — approximately 98% — was allocated for tax credits for 175 brownfield sites for Fiscal Year 2024-25.

If you have any questions regarding this report, please contact me or Tim Bahr, Director of DEP's Division of Waste Management, at 850-245-8790 or [Tim.Bahr@FloridaDEP.gov](mailto:Tim.Bahr@FloridaDEP.gov).

Sincerely,

A handwritten signature in blue ink, appearing to read 'A. Lambert'.

Alexis A. Lambert  
Secretary

Enclosure

cc: John Truitt, Deputy Secretary for Regulatory Programs, DEP  
Brett Tubbs, Director, Office of Legislative Affairs, DEP  
Tim Bahr, Director, Division of Waste Management, DEP  
Maureen Smith, Bureau Chief, Florida Department of Economic Opportunity  
Edward Philyaw, Deputy Program Director, Florida Department of Revenue



# FLORIDA BROWNFIELDS REDEVELOPMENT PROGRAM ANNUAL REPORT

## TABLE OF CONTENTS

Executive Summary	2
Introduction and History	4
Brownfields Redevelopment Program Status	5
Federal Brownfields Update	11
Additional Information and Contacts	14
Appendices	15

## Executive Summary

In accordance with Florida’s Brownfields Redevelopment Act, a brownfield site is real property, the expansion, redevelopment or reuse of which may be complicated by actual or perceived environmental contamination. The Florida Department of Environmental Protection’s (DEP) Brownfields Redevelopment Program, established in 1997, empowers communities, local governments and other stakeholders to work together to assess, clean up and reuse brownfields.

The two primary goals of the program are contaminated site cleanup and economic redevelopment. Since inception of the program in 1997, 252 contaminated sites have been cleaned up; approximately 87,499 confirmed and projected direct and indirect jobs have been created; and \$3.188 billion in capital investment is projected in designated brownfield areas.

### **BROWNFIELDS HIGHLIGHTS**

#### **Brownfield Area Designations**

Calendar Year 2024	18
Calendar Year 2025 (to 6/30/25)	3

#### **Brownfield Site Rehabilitation Agreements**

Calendar Year 2024	32
Calendar Year 2025 (to 6/30/25)	3

#### **Site Rehabilitation Completion Orders**

Calendar Year 2024	14
Calendar Year 2025 (to 6/30/25)	5

#### **Voluntary Cleanup Tax Credits for Brownfield Sites**

Calendar Year 2024	\$25,300,000
--------------------	--------------

#### **Projected Capital Investment**

1997 to Calendar Year 2023	\$3.188B
----------------------------	----------

Highlights and milestones for all of calendar year 2024 and the first six months of calendar year 2025 include:

- **Brownfield Areas:** 14 municipalities and county governments approved local resolutions that designated 18 additional brownfield areas in 2024 and three municipalities and county governments approved three additional brownfield areas in the first six months of 2025. The total number of brownfield areas in Florida has reached 613.
- **Brownfield Site Rehabilitation Agreements:** 32 brownfield site rehabilitation agreements (BSRAs) were executed in 2024. Historically, the majority of BSRAs are executed during the last quarter of the calendar year. Three BSRAs have been executed in the first half of 2025, bringing the total number executed since program inception to 532.
- **Site Rehabilitation Completion Orders:** A total of 14 site rehabilitation completion orders (SRCOs) were issued in 2024 with 12 being conditional SRCOs (CSRCOs) and two being unconditional SRCOs. Five SRCOs have been issued during the first six months of 2025. The SRCOs were issued for sites that completed cleanup of property to standards protective of human health and the environment. As stated earlier, since the inception of the program in 1997, the total number of SRCOs issued to date is 252, with 132 being issued as CSRCOs and 120 being unconditional SRCOs.

- **Voluntary Cleanup Tax Credits (VCTC):** DEP received 183 tax credit applications for 2024 calendar year expenses, and the approved tax credits totaled \$25.3 million. Of this total, \$24.7 million, approximately 98 percent, was allocated for tax credits for site rehabilitation work completed at 175 brownfield sites. Starting in 2008, the approved tax credits exceeded the available authorization. The Legislature increased the annual tax credit authorization from the initial amount of \$2 million to \$5 million in 2011, and then to \$10 million in 2017. After multiple one-time supplemental authorizations to address the growing backlog of approved tax credits, the Legislature increased the annual tax credit authorization to \$35 million in 2023.
- **New Jobs:** Since 1997, more than \$557 million in confirmed investment and 16,622 confirmed net new direct jobs can be attributed to the program.<sup>1</sup>

---

<sup>1</sup> Data provided by FloridaCommerce, Division of Strategic Business Development, July 8, 2025.

## **Introduction and History**

Many areas in Florida contain sites with actual or perceived environmental contamination that may present a significant barrier to redevelopment. The Florida Brownfields Redevelopment Act (the Act), sections 376.77-376.86, Florida Statutes (F.S.), was adopted by the Florida Legislature in 1997 to provide incentives for local governments and individuals to voluntarily clean up and redevelop brownfield sites. Participation in the program results in environmental cleanup, protection of public health, reuse of infrastructure, economic redevelopment and job creation.

### **Florida Brownfields Redevelopment Program Objectives:**

- Site rehabilitation.
- Job creation.
- Increased capital investment.
- Broadened tax base by raising property values.
- Better utilization of existing infrastructure and community resources.
- Improvements in quality of life and the environment.

Local governments play a key role in the program by designating brownfield areas by resolution. Upon designation, owners and/or responsible parties of properties within a brownfield area may seek eligibility for the various financial and regulatory incentives when entering into a BSRA. These financial and regulatory incentives enable local governments and state agencies to partner with the private sector to rehabilitate contaminated properties, create jobs and promote sustainable reuse of properties within designated brownfield areas.

- A **brownfield site** is defined by statute as “real property, the expansion, redevelopment or reuse of which may be complicated by actual or perceived environmental contamination.”
- A **brownfield area** is defined by statute as “a contiguous area of one or more brownfield sites, some of which may not be contaminated, and which has been designated by a local government by resolution.”

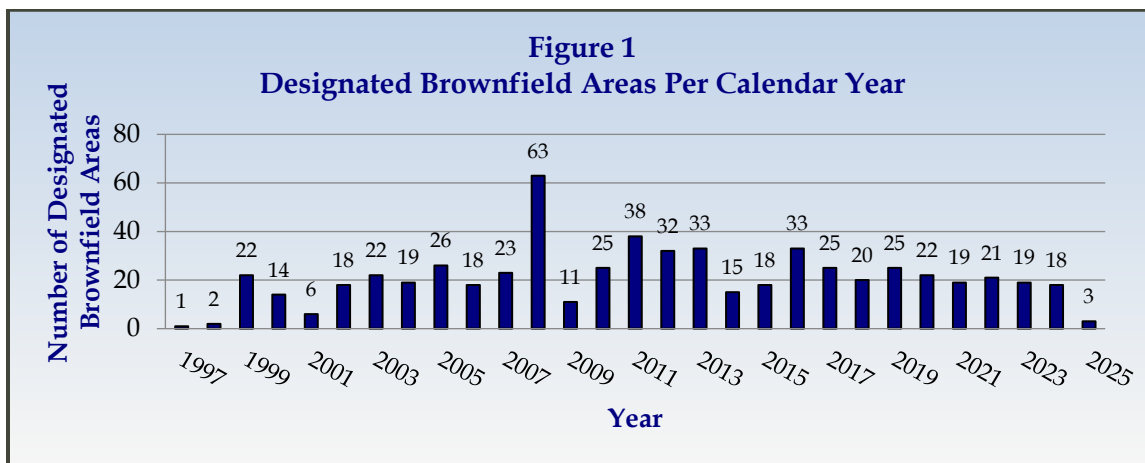
Since passage of the Act, DEP has provided education and outreach to a variety of interest groups, including communities, environmental consultants, lenders, local governments, economic redevelopment boards, community redevelopment agencies, attorneys and real estate professionals. DEP has also provided technical assistance and streamlined regulatory services to program participants.

Data presented in this report was collected through June 30, 2025, the end of the state fiscal year. Because most of the data for brownfields and brownfields-related programs (such as VCTC and the brownfields redevelopment bonus) are collected on a calendar-year basis, the information herein is presented for calendar year 2024 and for calendar year 2025 to date (through June 30, 2025).

## **Brownfields Redevelopment Program Status**

### **Florida Designated Brownfield Areas**

Local governments continue to support the use of the tools and incentives provided by the program by designating brownfield areas for cleanup and revitalization. Upon designation, properties within a brownfield area have met the first requirement for participation in the program. These properties may participate in economic incentives that are linked to a BSRA, including the job bonus tax refund or refunds on sales and use tax paid on the purchase of building materials used in a mixed-use project or housing project.<sup>2</sup> If contamination is known or suspected, the local government may designate an area and identify the person responsible for brownfield site rehabilitation (PRFBSR). This entitles the identified person to negotiate a BSRA with DEP.



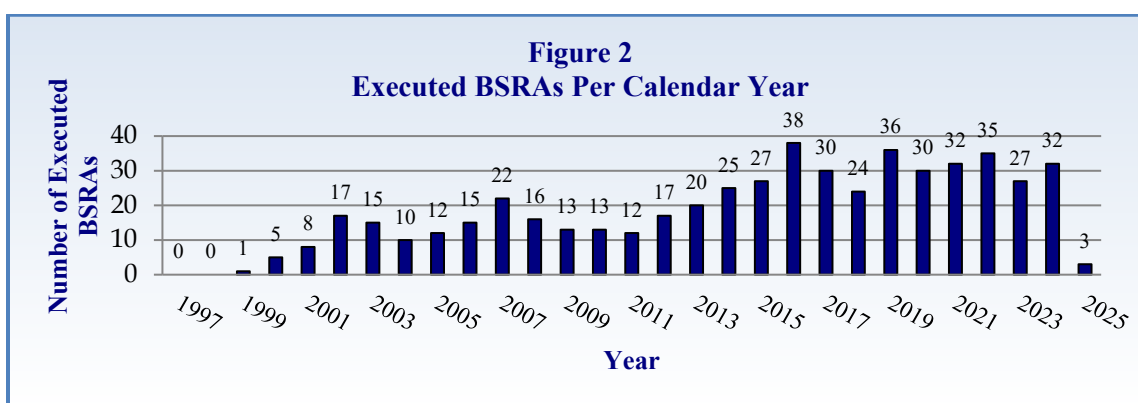
*Note: Data for 2025 represents the period from Jan. 1 through June 30, 2025.*

In 2024, 14 local governments reported approval of resolutions designating 18 brownfield areas. During the first half of 2025, three local governments designated three brownfield areas. Since the program's inception, Florida has amassed 613 designated brownfield areas in 163 communities across the state, averaging 22 newly designated brownfield areas each year (Figure 1). The 613 locally designated brownfield areas encompass approximately 295,310 acres representing a combination of contaminated and uncontaminated properties, including residential and viable business properties. **Appendix A** contains a "Brownfield Areas" table that lists the name, location, approximate size (acreage) and the resolution date of each brownfield area in the state. The resolution date is the date upon which the local government with jurisdiction over the area adopted its resolution designating the brownfield area pursuant to section 376.80, F.S.

<sup>2</sup>Florida Department of Revenue Tax Tip Sheet TIP #13A01-10, issued June 20, 2013, at [https://revenue.floridarevenue.com/LawLibraryDocuments/2013/07/TIP-117716\\_TIP%2013A01-10%20Sales%20Tax%20Refund%20for%20Building%20Materials%20-%20TIP%20FINAL.pdf](https://revenue.floridarevenue.com/LawLibraryDocuments/2013/07/TIP-117716_TIP%2013A01-10%20Sales%20Tax%20Refund%20for%20Building%20Materials%20-%20TIP%20FINAL.pdf).

## Brownfield Site Rehabilitation Agreements

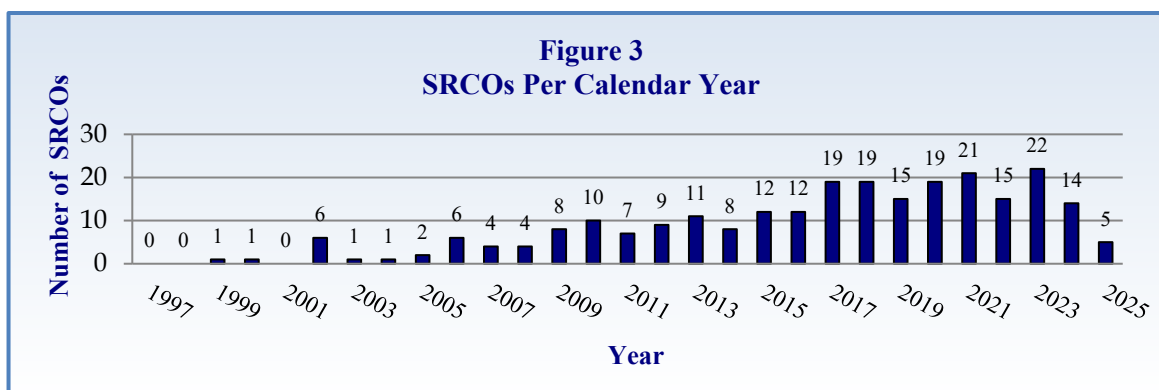
Once a local government designates a brownfield area and a PRFBSR is identified, this entity may voluntarily execute a BSRA with DEP. The BSRA provides DEP and the public with assurance that site rehabilitation will be conducted in accordance with F.S. and DEP's Contaminated Site Cleanup Criteria rule.<sup>3</sup> In addition, the BSRA provides limited liability protection for the voluntary responsible party and allows them to access various incentives, such as tax credits. The BSRA contains various commitments by the voluntary responsible party, including milestones for completion of site rehabilitation tasks and submittal of technical reports and plans. It also contains a commitment by DEP to review technical reports according to an agreed-upon schedule. Through June 30, 2025, voluntary responsible parties have executed 532 agreements with DEP since inception of the program in 1997. 32 BSRA's were executed in 2024 while three have been executed so far in 2025 (Figure 2).



*Note: Data for 2025 is compiled from Jan. 1 through June 30, 2025. Historically, the majority of BSRA's are executed during the final quarter of each calendar year.*

## Site Rehabilitation Completion Orders Issued

SRCOs are issued for sites that have completed cleanup of property to standards protective of human health and the environment, as established by Chapter 62-780, Florida Administrative Code, (F.A.C) and for which no further action (NFA) is required at that time. In 2024, 14 SRCOs were issued for brownfield sites across the state. During the first half of 2025, five SRCOs have been issued (Figure 3), bringing the total number of SRCOs issued since 1997 to 252.



*Note: Data for 2024 is compiled from Jan. 1 through June 30, 2025.*

<sup>3</sup> Chapter 62-780, Florida Administrative Code, (F.A.C.)

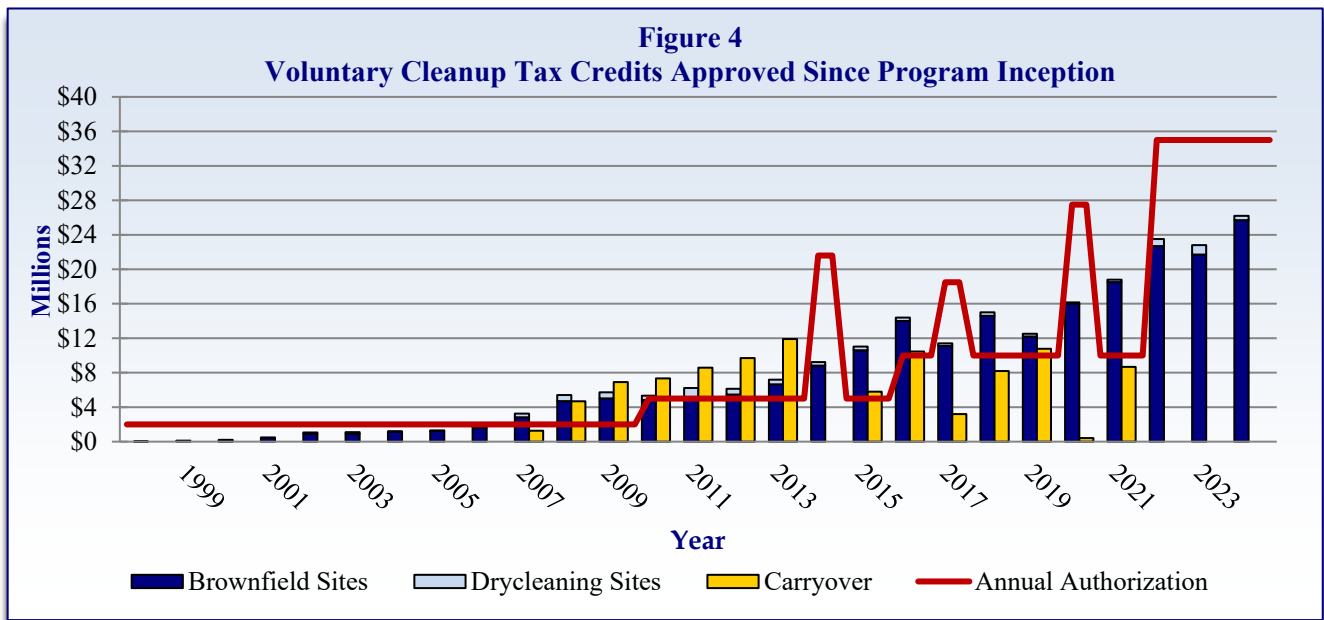
**Appendix B** contains a “Sites with Executed BSRA” table that provides the name, location and approximate size of each brownfield site in the state with an executed BSRA. The table includes a completion date for sites that have received an unconditional SRCO or a CSRCO. A CSRCO is issued when DEP has approved alternate cleanup target levels (ACTLs) that are protective of human health, public safety and the environment for a site, as established by Chapter 62-780.680, F.A.C. and/or the voluntary responsible party has agreed to use institutional controls, and if appropriate, engineering controls to eliminate exposure to contaminants.

### Status of State Financial Incentives

- **Voluntary Cleanup Tax Credit.**

In 1998, the Florida Legislature established the VCTC program to provide an incentive for the voluntary cleanup of drycleaning solvent-contaminated sites and brownfield sites in designated brownfield areas (section 376.30781, F.S.). Only those brownfield sites with an executed BSRA are eligible to apply for a VCTC incentive pursuant to section 376.30781, F.S.

At these eligible sites, a tax credit of 50 percent is allowed for the cost of voluntary cleanup activity that is integral to site rehabilitation, with a maximum of \$500,000 allowed per site per year. Additionally, at brownfield sites with executed BSRA in designated brownfield areas, a one-time 50-percent tax credit is allowed for solid waste removal with a maximum of \$500,000 allowed per site. Tax credits may be applied to state corporate income tax and are eligible for a one-time transfer within a five-year period. The VCTC program has approved approximately \$226.5 million in tax credits since it began more than 20 years ago.



*Note: Starting in 2008, the approved tax credits exceeded the available authorization. The Legislature increased the annual tax credit authorization from the initial amount of \$2 million to \$5 million in 2011, and then to \$10 million in 2017. After multiple one-time supplemental authorizations to address the growing backlog of approved tax credits, the Legislature increased the annual tax credit authorization to \$35 million in 2023.*

The brownfields and VCTC programs have been successful in promoting and realizing the cleanup and redevelopment of contaminated, underutilized properties throughout Florida. As a result, starting with applications for the 2007 calendar year, the approved tax credits have exceeded the available authorization (as shown on Figure 4). The Legislature increased the annual tax credit authorization from the initial amount of \$2 million to \$5 million in 2011, and then to \$10 million in 2017. Additionally, there have been multiple one-time, supplemental authorizations to address the growing backlog of approved tax credits. During the 2023 legislative session, the annual authorization was increased from \$10 million to \$35 million, effective July 1, 2023.

As of July 1, 2024, there was approximately \$17.6 million in approved tax credits. The authorization funded all outstanding awards. DEP received 183 VCTC applications for 2024 calendar year expenses, and the approved tax credits totaled \$25.3 million. Of this total, \$24.7 million — approximately 98% — was allocated for tax credits for 175 brownfield sites.

- **Other State Financial Incentives — FloridaCommerce.**

The Act also provides other financial and economic incentives administered by FloridaCommerce, including the brownfields redevelopment job bonus tax refund.

For the brownfields redevelopment job bonus tax refund, FloridaCommerce enters into incentive agreements with eligible entities that plan to create new jobs in Florida brownfield areas. As a result of the passage of Senate Bill 406 (Chapter No. 2013-42, Laws of Florida), effective July 1, 2013, in order to be eligible to participate in the job bonus tax refund, an entity must be creating jobs on a property that is subject to a BSRA or on a property that abuts a property that is subject to a BSRA. A certified business may be eligible to receive up to \$2,500 in tax refunds for each new job created. To qualify, the business must be a qualified target industry (QTI) business as defined in section 288.106, F.S., or make an eligible capital investment of at least \$2 million, create at least 10 jobs and provide benefits to its employees. The term of an incentive agreement is typically four or five years, with job creation or maintenance requirements in each year of the agreement. Payment of eligible tax refunds is subject to the satisfaction of the requirements set forth in the agreement.

For this report, FloridaCommerce has provided projections for job creation and capital investment associated with current agreements. In addition, FloridaCommerce has provided confirmed data for job creation and capital investment for projects with an executed agreement for the Brownfields Redevelopment Job Bonus Tax Refund program and the QTI with Brownfield Bonus Tax Refund program since the inception of the program (Table 1).

Period	New Direct Jobs Projected	Indirect Jobs Projected	Investment Projected	Confirmed Net New Direct Jobs	Investment Confirmed to Date
1997 - June 30, 2025	25,688	45,189	\$3,188,015,703		
1997 - December 31, 2023**				16,622	\$557,454,860

*Note: \*\*Claims for job bonus tax refunds are submitted in January following the year the jobs were created. Claims for 2024 jobs were received in January 2025 and are currently being evaluated and confirmed. Therefore, the most recent confirmed jobs data is for the period ending Dec. 31, 2023.*

- **Other State Financial Incentives — DOR.**

The Florida Department of Revenue (DOR) offers a refund on sales and use tax paid on building materials used in the construction of a qualified home, affordable housing or mixed-use affordable housing projects built on or abutting a site with a BSRA. Interested parties must complete an application for refund; sales and use tax (Form DR-26S) along with the Florida Neighborhood Revitalization Program application for sales and use tax (Form DR-26RP). These forms, along with any required attachments, must be filed within six months after the date the local building inspector determines the qualified home, housing or mixed-use project is substantially completed.

DEP's [Brownfields Redevelopment Program website](#) provides the latest program-specific information and links to websites for FloridaCommerce, DOR, local governments, the Environmental Protection Agency's (EPA) Brownfields Program and other federal agencies involved in partnering for the redevelopment of brownfields.

### **EPA Memorandum of Agreement**

The current memorandum of agreement (MOA) between DEP and EPA, which specifies the criteria under which EPA will forgo its oversight of cleanups in Florida was amended and executed on Nov. 28, 2005. Florida is one of approximately 25 states with an existing MOA with EPA. Through the MOA, certain sites subject to corrective action under federal Comprehensive Environmental Response Compensation and Liability Act (CERCLA) and Resource Conservation and Recovery Act (RCRA) authority are eligible for state brownfields incentives.

Additionally, to be eligible to receive CERCLA Section 128(a) grant funding authorized by the federal Small Business Liability Relief and Brownfields Revitalization Act of 2002, a state must be a party to a voluntary response program with EPA or demonstrate that its response program includes or is taking steps to include, the elements of a response program. Florida receives Section 128(a) funding under the State and Tribal Response Program (SRP) and Bipartisan Infrastructure Law (BIL) Grant. In 2024, DEP received \$640,000 in SRP grant funding and \$735,000 in BIL grant funding from EPA.

## Florida's Brownfields Staff

- **DEP Tallahassee and Six DEP Districts.**

The Brownfields Redevelopment Program is managed by key staff within DEP's Brownfields and CERCLA Site Screening Section (a subsection of the Division of Waste Management in Tallahassee) who work very closely with the brownfields coordinators in the six DEP districts across the state as well as the three delegated local programs. Funding for the administration of the program by Tallahassee staff is provided by the annual CERCLA 128(a) SRP Grant. DEP Tallahassee and DEP district brownfields staff contact information is provided [online](#).

- **Delegated Local Brownfield Programs.**

Three county governments (Broward, Hillsborough and Miami-Dade) have received delegation from DEP to administer the Brownfields Redevelopment Program locally. The original delegation agreements with Broward and Miami-Dade counties were signed in 2000 and renewed in 2010 and 2020. The agreement with Hillsborough County was signed in 2004 and renewed in 2012 and 2020 to allow for the same timeline as Broward and Miami-Dade counties going forward. Delegated county staff contact information is provided [online](#).

The success of the Brownfields Redevelopment Program is directly attributable to the contributions by the six DEP districts (Northwest, Northeast, Central, Southwest, Southeast and South) and the three delegated local programs. DEP appreciates the continued support and important work they provide.

## Public Outreach and Education

As an ongoing responsibility of the program, DEP Tallahassee and district staff participate in frequent outreach and educational speaking engagements with various city and county organizations, trade shows and industry groups in addition to the annual conferences and workshop. Outreach highlights are as follows.

- **FBA Annual Florida Brownfields Conference, June 2024.**

The Florida Brownfields Association (FBA) hosted the Annual Brownfields Conference from June 25-28, 2024, in Gainesville, Florida. Over 100 participants from regional government and engineering and environmental consulting firms joined state and federal experts to learn about the opportunities and technical assistance available in brownfield redevelopment as well as case studies and capacity building. The conference featured concurrent sessions over three days, with a keynote address from Clifford J. Villa, Deputy Assistant Administrator, Office of Land and Emergency Management, EPA. Highlights of the conference presentations and panel discussions included brownfield incentives, VCTC, Per- and polyfluoroalkyl substances (PFAS) considerations, solid waste and cleanup funding and legislative and technical updates.

As a means of facilitating public outreach and education, DEP's Brownfields Redevelopment Program website is kept up to date with the latest program-specific information. Not only providing links to our partners, but the website also contains map images of all designated brownfield areas and copies of local government resolutions and executed BSRAs. Program-specific information can also be found using [DEP's Contamination Locator Map \(CLM\) website](#) and [Map Direct website](#). These tools allow users to locate all sites that are currently under

DEP's cleanup oversight, and the CLM website enables users to subscribe to an online service that provides updates on cleanup milestones.

## **Federal Brownfields Update**

### **Small Business Liability Relief and Brownfields Revitalization Act of 2002 and the BUILD Act of 2018**

Policies that EPA developed during the 1990s were incorporated into law through passage of the Small Business Liability Relief and Brownfields Revitalization Act 2002. The brownfields law expanded EPA's assistance to the public and private sectors by providing new tools for promoting sustainable cleanup and reuse. The Brownfields Utilization, Investment and Local Development (BUILD) Act was enacted on March 23, 2018, as part of the Consolidated Appropriations Act 2018. The BUILD Act reauthorized EPA's Brownfields Program and made amendments to the 2002 Small Business Liability Relief and Brownfields Revitalization Act. Authorized changes affect brownfields grants, ownership and liability provisions and state and tribal response programs. EPA began implementing the BUILD Act in 2018 and has now incorporated nearly all the BUILD Act provisions into current policies.

### **Bipartisan Infrastructure Law: A Historic Investment in Brownfields**

The passage of the Bipartisan Infrastructure Law (BIL) in November 2021 provided more than \$1.5 billion in brownfields investments over the next five years. Of this \$1.5 billion, investments include \$150 million in multipurpose grants; \$600 million in assessment grants; \$160 million in cleanup grants; \$150 million in revolving loan fund grants; \$30 million in job training grants; \$110 million in technical assistance (including targeted brownfield assessments); and \$300 million in cooperative agreements to state and tribal response programs.

## **Federal Brownfields Grants**

Brownfields grants continue to serve as the foundation of EPA's Brownfields Program. The following grants support revitalization efforts by providing seed money for environmental assessment, cleanup and job training.

- Community-Wide Assessment Grants provide funding for the same activities as the Site-Specific Assessment Grants but for a designated target area consisting of multiple brownfield sites. An applicant may request up to \$500,000 to assess sites contaminated by hazardous substances, pollutants, contaminants (including hazardous substances co-mingled with petroleum) and/or petroleum. Communities may also apply for Site-Specific Assessment Grants; however, they may not apply as a member of a coalition.
- Assessment Coalition Grants provide funding to a group of three or more applicants — such as municipalities, regional planning councils and counties — for assessment work related to hazardous substances and/or petroleum. The maximum grant amount was \$1.2 million. Coalition grant applicants were not able to apply for any of the other assessment grants.

- Revolving Loan Fund (RLF) Grants provide funding to capitalize loans and provide subawards that are used to clean up brownfield sites. Grant amounts can range up to \$1 million. These grants are awarded to successful new applicants every other federal Fiscal Year. Beginning in FY 2022-23, only those entities that do not have an open Brownfields RLF cooperative agreement will be eligible to apply for funding. When current high-performing RLF recipients are selected for non-competitive supplemental funding, EPA may choose to award a new grant rather than extend the period of performance of the current cooperative agreement.
- Cleanup Grants provide direct funding for cleanup activities at an eligible brownfield site that the applicant owns. Previously limited to \$200,000, the revised grant amount is now \$500,000 and applicants may request a waiver to request up to \$2 million, or up to \$4 million.
- Multipurpose Brownfields Grants provide funding for assessment and cleanup activities at one or more brownfield sites in the proposed brownfield area in which the multipurpose grant will be used. Grant amounts can be requested up to \$1 million, and the applicant should demonstrate how grant funds will be used to conduct a range of eligible activities.

### **2025 Brownfield Competitive Grants Awarded to Florida**

In May 2025, Brownfield Competitive Grants (totaling \$6.1 million) were awarded to eligible Florida recipients:

- Gadsden County, FL
  - \$500,000 Community-Wide Assessment
- Lake Alfred, FL
  - \$1,995,605 Cleanup
- Palmetto Community Redevelopment Agency
  - \$500,000 Community-Wide Assessment
- South Florida Regional Planning Council
  - \$1,200,000 Community-Wide Assessment
  - 2,000,000 RLF Supplemental

EPA also provides Environmental Workforce Development and Job Training (JT) grants to provide a core training program that can include instruction in disaster site work; emergency response; asbestos work; lead renovation, repair and painting; confined space entry; integrated pest management; blood-borne pathogens; Occupational Safety and Health Administration (OSHA) construction safety; oil spill supervision; hazardous material technician; hazardous waste operator; and Florida stormwater, erosion and sedimentation control inspection. The maximum grant amount was previously \$200,000; however, eligible entities are now able to request up to \$500,000. The Pioneer Bay Community Development Corporation, Port St. Joe, Florida, received this grant in 2022 for \$199,790; The Sustainable Workplan Alliance, Kissimmee, Florida, received this grant for \$500,000 in 2023; Corporation to Develop Communities of Tampa, Inc., Tampa, Florida, received this grant for \$500,000 in 2023; and Eco Ed Impact Corp, Miami, Florida, received this grant for \$500,000 in 2025.

In addition to the grants described above, DEP received an SRP grant under CERCLA 128(a) in the amount of \$640,000. This is the 22nd year in which DEP has received an SRP grant, with the total amount awarded exceeding \$15.5 million. DEP also received an additional SRP cooperative agreement to be funded under the BIL in the amount of \$735,000. This BIL grant should last for five years and will total \$4 million.

Since the inception of the SRP grant and its predecessor program, the BIL grant, DEP has assisted 114 applicants with 132 projects on contaminated (or potentially contaminated) sites. DEP uses the grants to pay for staff and contractors that provide brownfields services at eligible sites for local governments, nonprofit organizations and other eligible applicants. These services include assessment and cleanup activities. DEP also uses the grants to fund staff in Tallahassee who lead coordination of the Florida Brownfields Redevelopment Program. These staff produce and maintain information about the program, conduct outreach and education, coordinate with district and delegated brownfield program coordinators, review BSRAs and SRCOs and proactively engage with the brownfields community.

In response to stakeholder input, beginning in spring 2018, DEP also used SRP grant funding to launch a project with the goal of better understanding the impacts of SRP funding in communities through brownfields redevelopment as well as through targeted brownfields assessment/site-specific assessments that may lead into future redevelopment. DEP has contracted with USF to lead a project that developed an online tool that will evaluate social and economic impacts. That online tool is now known as the Brownfields Redevelopment Atlas, an interactive Geographic Information System (GIS) based tool available to the public on an online platform. Refinement and additional data are continuously being added to this tool, with new features being added, ground truthing of the spatial data analysis and modeling being done and results being disseminated. The Brownfields Redevelopment Atlas is available [online](#).

## **Additional Information and Contacts**

### **For information on the content of this report or the program:**

Scott Sweeney, Florida Brownfields Program Manager and Liaison to EPA  
Brownfields Redevelopment Program  
Florida Department of Environmental Protection  
Telephone: 850-245-8958  
Email: [Scott.L.Sweeney@FloridaDEP.gov](mailto:Scott.L.Sweeney@FloridaDEP.gov)

### **For information regarding the Voluntary Cleanup Tax Credit Program:**

Courtney Johnstone, Voluntary Cleanup Tax Credit Manager  
Florida Department of Environmental Protection  
Telephone: 850-245-8998  
Email: [Courtney.Johnstone@FloridaDEP.gov](mailto:Courtney.Johnstone@FloridaDEP.gov)

### **For information on aspects of the program related to economic incentives administered by FloridaCommerce:**

Maureen Smith, Bureau Chief, Division of Economic Development  
FloridaCommerce  
Telephone: 850-717-8978  
Email: [Maureen.Smith@commerce.fl.gov](mailto:Maureen.Smith@commerce.fl.gov)

### **For information regarding sales tax credits on building materials purchased for the construction of affordable housing projects or mixed-use affordable housing projects on or abutting a site with a BSRA:**

Andrea Hunter, Revenue Program Administrator  
Florida Department of Revenue  
Telephone: 850-717-7773  
Email: [Andrea.Hunter@FloridaRevenue.com](mailto:Andrea.Hunter@FloridaRevenue.com)

Learn more about [Florida's Brownfields Program](#) on the DEP website.

**APPENDIX A**  
**Designated Brownfield Areas**

Brownfield Areas  
Florida Brownfields Redevelopment Program

7/1/2025



Total Areas: 613

Area ID	Area Name	City	County	District	Designated by	Resolution #	Resolution Date	Amended Resolution Date	Acreage
BF432501000	9670 SW Marine Way	STUART	MARTIN	Southeast	County	25-2.6	2/11/2025		7.75
BF502501000	Cypress Creek Green Reuse Area	BOYNTON BEACH	PALM BEACH	Southeast	County	R-2025-0220	2/11/2025		122.58
BF132501000	Ludlam Trail Phase II Brownfield Area	MIAMI	MIAMI-DADE	Southeast	County	R-32-25	1/22/2025		5.60
BF062403000	Heron Bay Green Reuse Area	PARKLAND	BROWARD	Southeast	City	2024-098	12/18/2024		46.22
BF062402000	Pantry Lofts Green Reuse Area	FORT LAUDERDALE	BROWARD	Southeast	City	24-279	12/17/2024		0.73
BF132405000	2400 W Okeechobee Green Reuse Area	HIALEAH	MIAMI-DADE	Southeast	City	2024-397	12/10/2024		2.04
BF292404000	Channelside Drive Park Brownfield Area	TAMPA	HILLSBOROUGH	Southwest	City	2024-1118	12/5/2024		0.49
BF292402000	East Ybor Development Area	TAMPA	HILLSBOROUGH	Southwest	City	2024-1117	12/5/2024		0.50
BF292403000	Richman Hillsborough Apartments Green Reuse Area	TAMPA	HILLSBOROUGH	Southwest	City	2024-1074	11/21/2024		13.42
BF292401000	Las Villas Brownfield Area	RUSKIN	HILLSBOROUGH	Southwest	County	R24-092	11/13/2024		2.38
BF552401000	SJC Flex Warehouse Brownfield Area	ST. AUGUSTINE	ST. JOHNS	Northeast	County	2024-494	11/7/2024		40.41
BF062401000	Yashasim Green Reuse Area	HOLLYWOOD	BROWARD	Southeast	City	R-2024-353	10/23/2024		5.00
BF162401000	Butler Creek Green Reuse Area	JACKSONVILLE	DUVAL	Northeast	City	2024-701-A	10/8/2024		114.18
BF132404000	Claude Pepper Park Green Reuse Area	MIAMI	MIAMI-DADE	Southeast	City	2024-R-139	9/24/2024		11.14
BF132403000	WGC 97th Green Reuse Area	HIALEAH	MIAMI-DADE	Southeast	City	2024-244	9/23/2024		8.86
BF532402000	Downtown Redevelopment Brownfield Area	HAINES CITY	POLK	Southwest	City	24-1813	9/5/2024		0.26
BF132402000	Lithia Motors Green Reuse Area	DORAL	MIAMI-DADE	Southeast	City	24-159	6/12/2024		8.32
BF132401000	The Launch at Little River Green Reuse Area	EL PORTAL	MIAMI-DADE	Southeast	City	2024-04	5/28/2024		1.22
BF532401000	Lakeland Industrial Crossings Green Reuse Area	LAKELAND	POLK	Southwest	County	2024-094	5/7/2024		22.57
BF352402000	South Lake Regional Park Redevelopment Area	GROVELAND	LAKE	Central	City	2024-15	2/20/2024		143.04
BF352401000	Milestone Redevelopment Area	GROVELAND	LAKE	Central	City	2024-14	2/20/2024		11.72
BF132304000	Westland Gardens Green Reuse Area	HIALEAH GARDENS	MIAMI-DADE	Southeast	City	2884	12/19/2023		7.48
BF132303000	Beacon Lakes Logistics Park Brownfield Area	MIAMI	MIAMI-DADE	Southeast	County	R-1058-23	12/12/2023		37.47
BF132302000	Coconut Palm Truck Parking Brownfield Area	PRINCETON	MIAMI-DADE	Southeast	County	R-1059-23	12/12/2023		61.20
BF162301000	5079 W Beaver Street Brownfield Area	JACKSONVILLE	DUVAL	Northeast	City	2023-779-A	11/29/2023		1.69
BF502302000	Verde Commons Green Reuse Area	BOCA RATON	PALM BEACH	Southeast	County	2023-1732	11/21/2023		17.53
BF352301000	Grove Redevelopment Area	GROVELAND	LAKE	Central	City	2023-90	11/20/2023		633.04
BF162303000	King's Avenue Brownfield Area	JACKSONVILLE	DUVAL	Northeast	City	2023-740-A	11/16/2023		0.66
BF162302000	Hogan Settlement Brownfield Area	JACKSONVILLE	DUVAL	Northeast	City	2023-739-A	11/16/2023		15.55
BF292302000	Former Tampa Bay Metals	TAMPA	HILLSBOROUGH	Southwest	City	R23-101	11/15/2023		3.11
BF382301000	BW Noble Green Reuse Area	WILLISTON	LEVY	Northeast	City	2023-95	11/7/2023		2.98
BF552301000	West Augustine Gateway Brownfield Area	ST AUGUSTINE	ST. JOHNS	Northeast	City	2023-35	10/23/2023		5.68
BF292301000	Ybor Gateway Redevelopment Area	TAMPA	HILLSBOROUGH	Southwest	City	2023-884	9/7/2023		24.15
BF372301000	Airport Gateway Corridor Brownfield Area	TALLAHASSEE	Leon	Northwest	City	23-R-15	8/23/2023		720.46
BF482301000	Ocoee Northwest Brownfield Area	OCOE	ORANGE	Central	City	2023-08	7/18/2023		132.24
BF502301000	Former Southern Crop Services Green Reuse Area	DELRAY BEACH	PALM BEACH	Southeast	County	R-2023-0975	7/11/2023		9.63
BF532302000	2030-2035 Griffin Road Brownfield Area	LAKELAND	POLK	Southwest	City	5826	6/19/2023		11.73
BF062301000	Pinnacle at State Road 7 Brownfield Area	HOLLYWOOD	BROWARD	Southeast	City	R-2023-157	6/7/2023		-

Area ID	Area Name	City	County	District	Designated by	Resolution #	Resolution Date	Amended Resolution Date	Acreage
BF432301000	Landfill Green Reuse Area	STUART	MARTIN	Southeast	City	09-2023	2/27/2023		50.40
BF532301000	Griffin Road Brownfield Area	LAKELAND	POLK	Southwest	City	5803	2/20/2023		3.50
BF412301000	Riverview6 Green Reuse Area	BRANDENTON	MANATEE	Southwest	City	23-13	2/8/2023		1.42
BF132301000	Parkview Gables Green Reuse Area	MIAMI	MIAMI-DADE	Southwest	City	R-23-0021	1/12/2023		0.73
BF132209000	Palmetto 74 Logistics Center Brownfield Area	MEDLEY	MIAMI-DADE	Southwest	City	C-2050	12/21/2022		21.86
BF132208000	Palmetto Station Brownfield Area	MEDLEY	MIAMI-DADE	Southwest	City	C-2049	12/21/2022		11.62
BF502202000	Encompass Health Green Reuse Area	GREENACRES	PALM BEACH	Southwest	County	R2022-1566	12/20/2022		8.22
BF292203000	Coral Walk Brownfield Area	TAMPA	HILLSBOROUGH	Southwest	City	2022-1128	12/15/2022		3.72
BF062201000	El-Ad Gas Station Parcel Green Reuse Area	DAVIE	BROWARD	Southwest	City	R 2022-227	12/7/2022		0.94
BF522201000	Corey Landing Green Reuse Area	ST. PETERSBURG BEACH	PINELLAS	Southwest	City	2022-23	12/6/2022		3.89
BF532202000	Former Polk County Fertilizer Plant Brownfield Area	HAINES CITY	POLK	Southwest	City	22-1703	12/6/2022		4.89
BF132207000	Water Park Villas Green Reuse Area	MIAMI GARDENS	MIAMI-DADE	Southeast	City	R-1152-22	12/6/2022		4.15
BF132206000	Paradise Park Green Reuse Area	KEY BISCAYNE	MIAMI-DADE	Southeast	City	2022-60	11/29/2022		0.33
BF292202000	2101 W Main St Brownfield Area	TAMPA	HILLSBOROUGH	Southwest	City	2022-1047	11/17/2022		0.23
BF132205000	Southside Park Green Reuse Area	MIAMI	MIAMI-DADE	Southeast	City	R-22-0449	11/17/2022		1.83
BF132204000	The Line Green Reuse Area		MIAMI-DADE	Southeast	City	R-1093-22	11/15/2022		1.48
BF132203000	Bellamonte at Golden Glades Green Reuse Area		MIAMI-DADE	Southeast	City	R-1094-22	11/15/2022		7.05
BF482201000	Edgewater Drive Brownfield Area	ORLANDO	ORANGE	Central	City	7-1	11/7/2022		0.67
BF132202000	19640 WDH Green Reuse Area	MIAMI	MIAMI-DADE	Southeast	City	R-903-22	10/6/2022		2.30
BF502201000	Okeechobee Blvd. Former Landfill and Shooting Range Green Reuse Area	PALM BEACH	PALM BEACH	Southeast	County	R2022-1027	9/13/2022		28.28
BF162201000	2861 College Street Brownfield Area	JACKSONVILLE	DUVAL	Northeast	City	2022-187-A	4/14/2022		3.17
BF132201000	NoMi Square Brownfield Area	NORTH MIAMI	MIAMI-DADE	Southeast	City	2022-R-46	4/12/2022		7.52
BF562201000	Blue Sky Landing Green Reuse Area	FORT PIERCE	ST. LUCIE	Southeast	City	22-R11	3/21/2022		9.14
BF532201000	East Bella Vista Street Brownfield Area	LAKELAND	POLK	Southwest	City	5740	2/8/2022		13.79
BF292201000	Blue UACDC 1 Brownfield Area	TAMPA	HILLSBOROUGH	Southwest	County	R22-008	2/7/2022		2.84
BF422101000	307 NW 21st St. BF Area	OCALA	MARION	Central	City	2022-9	12/14/2021		0.63
BF422102000	West Oak Redevelopment Brownfield Area	OCALA	MARION	Central	City	2022-8	12/7/2021	12/5/2023	200.04
BF412101000	Carr Landing	BRADENTON	MANATEE	Southwest	County	21-167	12/7/2021		6.68
BF132104000	Miami Lakes Industrial Project Area	HIALEAH	MIAMI-DADE	Southeast	County	R-1017-21	11/16/2021		15.69
BF062101000	El-Ad Broward Plaza Green Reuse Area	DAVIE	BROWARD	Southeast	City	R 2021-310	11/2/2021		8.18
BF292103000	Independence Park Redevelopment Area	TAMPA	HILLSBOROUGH	Southwest	City	2021-960	10/20/2021		45.50
BF592101000	SEED 1980 Cameron Ave Brownfield Area	SANFORD	SEMINOLE	Central	County	2021-R-175	10/20/2021		15.00
BF292102000	South Florida Baptist Hospital Economic Enhancement Area	PLANT CITY	HILLSBOROUGH	Southwest	City	182-2021	10/20/2021		51.00
BF132103000	South Riviera Investment No. 2 Brownfield Area	HOMESTEAD	MIAMI-DADE	Southeast	County	R-988-21	10/19/2021		4.61
BF522103000	Carroll Investment Largo Brownfield Area	LARGO	PINELLAS	Southwest	City	2300	9/7/2021		8.27
BF532102000	Park Ridge Green Reuse Area	MULBERRY	POLK	Southwest	City	RES-2021-05	7/26/2021		7.64
BF292101000	Interbay Redevelopment Area	TAMPA	HILLSBOROUGH	Southwest	City	2021-495	6/24/2021		26.07
BF132102000	Brickell Fire Station Green Reuse Area	MIAMI	MIAMI-DADE	Southeast	City	R-21-0141	6/7/2021		1.50
BF642101000	2000 Brunswick Lane Brownfield Area	DELAND	VOLUSIA	Central	City	2021-29	6/7/2021		47.63

Area ID	Area Name	City	County	District	Designated by	Resolution #	Resolution Date	Amended Resolution Date	Acreage
BF482101000	Oak Royal Brownfield Area	APOPKA	ORANGE	Central	City	2021-28	6/2/2021		22.26
BF522102000	Blue Pinellas Brownfield Area	SAINT PETERSBURG	PINELLAS	Southwest	City	2021-196	5/6/2021		1.10
BF532101000	Swan Lake Village Green Reuse Area	LAKELAND	POLK	Southwest	City	5677	5/3/2021		7.31
BF132101000	CBTS Green Reuse Area	BAY HARBOR ISLANDS	MIAMI-DADE	Southeast	City	2224	4/14/2021		1.42
BF522101000	Former Baypointe Golf Course Brownfield Area	SEMINOLE	PINELLAS	Southwest	County	21-2	1/12/2021		42.85
BF412001000	Jackson Crossings Phase II Green Reuse Area	PALMETTO	MANATEE	Southwest	County	20-173	12/15/2020		31.78
BF132003000	Miline at Ludlam Trail Green Reuse Area	MIAMI	MIAMI-DADE	Southeast	County	R-1241-20	12/15/2020		3.99
BF292003000	Channel Club II Brownfield Area	TAMPA	HILLSBOROUGH	Southwest	City	2020-865	12/10/2020		2.10
BF582002000	Greewater at SRQ Green Redevelopment Area	SARASOTA	SARASOTA	South	County	2020-276	12/8/2020		138.74
BF062003000	5000 Davie Green Reuse Area	DAVIE	BROWARD	Southeast	City	2020-R-38	12/2/2020		3.83
BF592001000	Village Grande Brownfield Area	ALTAMONTE SPRINGS	SEMINOLE	Central	City	066-2020	12/1/2020		4.31
BF052001000	Heritage Park at Crane Creek Green Reuse Area	MELBOURNE	BREVARD	Central	City	3150-15	11/24/2020		15.08
BF582001000	Sabal Trace Redevelopment Area	NORTH PORT	SARASOTA	South	City	2020-R-38	11/10/2020		206.99
BF292004000	Gracepoint Green Reuse Area	TAMPA	HILLSBOROUGH	Southwest	City	2020-773	11/5/2020		2.51
BF642001000	Former Sandhill Golf Course Brownfield Area	DELAND	VOLUSIA	Central	City	2011-32	11/2/2020		158.19
BF552001000	West San Sebastian Brownfield Area	ST AUGUSTINE	ST. JOHNS	Northeast	City	2020-35	10/26/2020		133.91
BF132002000	Cutler Bay Civic and Resiliency Enhancement Zone	CUTLER BAY	MIAMI-DADE	Southeast	City	2010-40	10/15/2020		32.00
BF292002000	Colonnade Crosstown, LLC Brownfield Area	TAMPA	HILLSBOROUGH	Southwest	County	R20-083	9/17/2020		156.38
BF292001000	5003 Dover Street Brownfield Area	TAMPA	HILLSBOROUGH	Southwest	County	R20-084	9/17/2020		11.47
BF422001000	North Magnolia Community Redevelopment Area	OCALA	MARION	Central	City	261-2007	9/15/2020		430.90
BF502001000	Palm Beach Rd and NW 1st Ave Brownfield Area	SOUTH BAY	PALM BEACH	Southeast	City	05-06-130	7/21/2020		2.85
BF372001000	Lafayette Gardens Reuse Area	TALLAHASSEE	LEON	Northwest	City	20-R-28	7/8/2020		5.77
BF062002000	Seven of Seventh Green Reuse Area	FT LAUDERDALE	BROWARD	Southeast	City	20-85	6/16/2020		0.93
BF352001000	Valencia II Green Reuse Area	EUSTIS	LAKE	Central	City	20-21	3/19/2020		8.21
BF062001000	Village View Green Reuse Area	FT LAUDERDALE	BROWARD	Southeast	City	20-32	3/3/2020		0.95
BF442001000	The Quarry Development Green Reuse Area		MONROE	South	County	066-2020	2/19/2020		21.64
BF132001000	Florida City CRA Green Reuse Area	FLORIDA CITY	MIAMI-DADE	Southeast	City	20-01	1/14/2020		1111.64
BF061907000	Public Works Campus Green Reuse Area	OAKLAND PARK	BROWARD	Southeast	City	R-2019-171	12/18/2019		9.18
BF291905000	SM-Ruskin Brownfield Area	RUSKIN	HILLSBOROUGH	Southwest	County	R19-146	12/18/2019		19.45
BF061906000	Belmont Porten Brownfield Area	POMPANO BEACH	BROWARD	Southeast	City	2020-83	12/10/2019		4.37
BF291904000	Hartford St. Properties LLC Brownfield Area	TAMPA	HILLSBOROUGH	Southwest	County	R19-142	12/6/2019		69.80
BF061904000	Poinciana Crossing Brownfield Area	FORT LAUDERDALE	BROWARD	Southeast	City	19-230	12/4/2019		2.31
BF091901000	Colonade Park Brownfield Area	INVERNESS	CITRUS	Southwest	City	2019-5	12/3/2019		8.63
BF531902000	Strickland Property Brownfield Area	AUBURNDALE	POLK	Southwest	County	19-121	11/19/2019		9.78
BF501901000	Residences at Boca Dunes Green Reuse Area	BOCA RATON	PALM BEACH	Southeast	County	R2019-1816	11/19/2019		55.84
BF061905000	Hallandale First Brownfield Area	HALLANDALE BEACH	BROWARD	Southeast	City	2019-125	11/19/2019		0.89
BF591901000	Warley Park Brownfield Area	SANFORD	SEMINOLE	Central	City	2821	11/18/2019		4.53
BF061903000	St. Elizabeth Gardens Brownfield Area	POMPANO BEACH	BROWARD	Southeast	City	2020-42	10/22/2019		6.75
BF061902000	Pinnacle at Peacefield Brownfield Area	HOLLYWOOD	BROWARD	Southeast	City	R-2019-350	10/22/2019		5.53

Area ID	Area Name	City	County	District	Designated by	Resolution #	Resolution Date	Amended Resolution Date	Acreage
BF291903000	Blue Broadway Green Reuse Area	SEFFNER	HILLSBOROUGH	Southwest	County	R19-1119	9/23/2019		23.22
BF561901000	Port of Ft. Pierce Brownfield Area	FT PIERCE	ST. LUCIE	Southeast	County	19-134	9/17/2019		12.34
BF411901000	Oaks at Lakeside Green Reuse Area	BRADENTON	MANATEE	Southwest	County	R-19-103	8/20/2019		15.90
BF171903000	Oakfield CRA Brownfield Area	PENSACOLA	ESCAMBIA	Northwest	County	R2019-59	7/18/2019		2293.41
BF171902000	Ensley CRA Brownfield Area	PENSACOLA	ESCAMBIA	Northwest	County	R2019-59	7/18/2019		2437.66
BF171901000	Atwood CRA Brownfield Area	PENSACOLA	ESCAMBIA	Northwest	County	R2019-59	7/18/2019		713.18
BF171904000	Cantonment CRA Brownfield Area	CANTONMENT	ESCAMBIA	Northwest	County	R2019-59	7/18/2019		2658.03
BF641901000	1389 Reed Canal Road Brownfield Area	PORT ORANGE	VOLUSIA	Central	City	19-22	5/22/2019		10.11
BF531901000	Parker Street Property Brownfield Area	LAKELAND	POLK	Southwest	City	5532	4/15/2019		1.90
BF291902000	JVS Land Holding Co., LLC Brownfield Area	TAMPA	HILLSBOROUGH	Southwest	County	R19-050	4/9/2019		19.41
BF551901000	409 Anastasia Blvd. Brownfield Area	SAINT AUGUSTINE	ST. JOHNS	Northeast	City	2019-05	3/25/2019		0.80
BF061901000	Coral Spring Economic Revitalization Zone Two Brownfield Area	CORAL SPRINGS	BROWARD	Southeast	City	2019-008	3/20/2019		16.16
BF291901000	Johns Road and Sligh Avenue Brownfield Area	TAMPA	HILLSBOROUGH	Southwest	County	R19-021	1/29/2019		19.21
BF061804000	Atlantic Village Green Reuse Area		BROWARD	Southeast	City	2018-134	12/12/2018		2.52
BF291804000	Suarez Trust Brownfield Area	TAMPA	HILLSBOROUGH	Southwest	County	R18-137	12/12/2018		19.14
BF011801000	BW University Green Reuse Area	GAINESVILLE	ALACHUA	Northeast	City	180517	12/6/2018		1.65
BF051801000	Former EZ Auto Sales Reuse Area	MERRITT ISLAND	BREVARD	Central	County	2018-190	12/4/2018		0.98
BF131805000	Collins Park Garage Green Reuse Area	MIAMI BEACH	MIAMI-DADE	Southeast	City	2018-30611	11/14/2018		1.47
BF061803000	Century Village Brownfield Area	DEERFIELD BEACH	BROWARD	Southeast	City	2018-172	11/13/2018		82.99
BF291803000	West River Development Brownfield Area	TAMPA	HILLSBOROUGH	Southwest	City	2018-957	11/8/2018		115.23
BF421801000	BW Pine Green Reuse Area	OCALA	MARION	Central	City	2019-3	11/6/2018		1.83
BF171802000	128 Airport Blvd Brownfield Area	PENSACOLA	ESCAMBIA	Northwest	County	R2018-127	11/1/2018		35.83
BF291802000	Madison Street Park Brownfield Area	TAMPA	HILLSBOROUGH	Southwest	City	2018-835	9/20/2018		0.92
BF481801000	Ocoee Downtown Brownfield Area	OCOE	ORANGE	Central	City	2018-012	6/19/2018		937.80
BF131801000	Convention Center Green Reuse Area	MIAMI BEACH	MIAMI-DADE	Southeast	City	2018-30346	6/16/2018		70.82
BF131803000	Maurice Gibb Memorial Park Green Reuse Area	MIAMI BEACH	MIAMI-DADE	Southeast	City	2018-30348	6/6/2018		3.37
BF131804000	Former Par 3 Green Reuse Area	MIAMI BEACH	MIAMI-DADE	Southeast	City	2018-30349	6/6/2018		22.31
BF131802000	Fleet Management Green Reuse Area	MIAMI BEACH	MIAMI-DADE	Southeast	City	2018-30347	6/6/2018		2.21
BF061802000	Suncrest Court Green Reuse Area	FORT LAUDERDALE	BROWARD	Southeast	City	18-100	6/5/2018		8.51
BF501801000	Calusa Estates Green Reuse Area	BELLE GLADE	PALM BEACH	Southeast	City	2017-3377	3/19/2018		9.70
BF291801000	Blue Humphrey Street Green Reuse Area	TAMPA	HILLSBOROUGH	Southwest	County	R18-020	2/26/2018		6.15
BF061801000	North Dixie Highway Parcels Green Reuse Area	OAKLAND PARK	BROWARD	Southeast	City	R-2018-013	2/7/2018		2.07
BF171801000	Delphin Downs Green Reuse Area	PENSACOLA	ESCAMBIA	Northwest	City	18-02	1/11/2018		2.06
BF161703000	Bella Mara Road Brownfield Area	JACKSONVILLE	DUVAL	Northeast	City	2017-773-A	12/18/2017		9.85
BF291703000	Former Pitch Pine Lumber Brownfield Area	TAMPA	HILLSBOROUGH	Southwest	City	2017-1071	12/12/2017		2.61
BF291704000	Cortona / Former Jai Alai Area	TAMPA	HILLSBOROUGH	Southwest	City	2017-1072	12/7/2017		13.13
BF531703000	Former Florida Tile Brownfield Area	LAKELAND	POLK	Southwest	City	5412	12/7/2017	5/16/2022	21.48
BF131701000	NW 58th Street Corridor Green Reuse Area	DORAL	MIAMI-DADE	Southeast	City	17-191	11/15/2017		257.62
BF161702000	San Marco Crossing Area	JACKSONVILLE	DUVAL	Northeast	City	2017-708-A	11/9/2017	9/25/2018	7.14

Area ID	Area Name	City	County	District	Designated by	Resolution #	Resolution Date	Amended Resolution Date	Acreage
BF641701000	New Smyrna Beach Northern Section Brownfield Area	NEW SMYRNA BEACH	VOLUSIA	Central	City	25-17	11/1/2017		102.12
BF641702000	New Smyrna Beach Southern Section Brownfield Area	NEW SMYRNA BEACH	VOLUSIA	Central	City	26-17	11/1/2017		229.67
BF411701000	The Addison Green Reuse Area	BRADENTON	MANATEE	Southwest	City	17-73	10/25/2017		3.09
BF181701000	Colbert Lane Brownfield Area	PALM COAST	FLAGLER	Northeast	City	2017-140	10/25/2017	11/21/2017	182.86
BF061702000	Residences at Palm Aire Parcel C	POMPANO BEACH	BROWARD	Southeast	City	2017-34	10/24/2017		16.76
BF481704000	Orlando Economic Enhancement District - 1101 S. Orange	ORLANDO	ORANGE	Central	City	102317	10/23/2017		0.35
BF531702000	Drummond Property Brownfield Area	LAKELAND	POLK	Southwest	City	5401	10/16/2017		17.81
BF481702000	Wellington Park Green Reuse Area: ROCC	APOPKA	ORANGE	Central	County	2017-M-35	9/19/2017		11.92
BF481703000	Brixton Landing Green Reuse Area: ROCC	APOPKA	ORANGE	Central	County	2017-M-36	9/19/2017		10.43
BF161701000	BW Philips Bowden, LLC Brownfield Area	JACKSONVILLE	DUVAL	Northeast	City	2017-524-A	8/25/2017		3.92
BF481701000	Pine Castle Urban Center: ROCC	ORLANDO	ORANGE	Central	County	2017-M-27	8/1/2017		558.60
BF301701000	Town of Esto Brownfield Area	ESTO	HOLMES	Northwest	City	17-02	7/18/2017		1068.78
BF291705000	The Graham at Gracepoint	TAMPA	HILLSBOROUGH	Southwest	City	2017-586	7/13/2017		4.30
BF291702000	Jackson Street Parking Lot Brownfield Area	TAMPA	HILLSBOROUGH	Southwest	City	2017-483	6/1/2017		1.03
BF131702000	Wealthy Delight Brownfield Area	EL PORTAL	MIAMI-DADE	Southeast	City	2017-14	5/23/2017		1417.00
BF291701000	Miroslav Mitusina Brownfield Area	RUSKIN	HILLSBOROUGH	Southwest	County	R17-052	4/24/2017		47.91
BF061701000	Arbor View Apartments Brownfield Area	MARGATE	BROWARD	Southeast	City	17-056	4/5/2017		2.51
BF531701000	West Lake Apartments Green Reuse Area	LAKELAND	POLK	Southwest	City	5352	3/6/2017		13.23
BF511701000	Dade City Downtown Brownfield Area #1	DADE CITY	PASCO	Southwest	City	2017-13	2/14/2017		3.43
BF641603000	261 South State Road 415 Area	OSTEEN	VOLUSIA	Central	County	2016-174	12/8/2016		1.18
BF531601000	Noah's Ark Brownfield Area	LAKELAND	POLK	Southwest	City	5340	12/5/2016		55.69
BF481604000	Universal Boulevard East ROCC	ORLANDO	ORANGE	Central	County	2016-M-59	12/2/2016	12/13/2016	34.34
BF501602000	Former Rood Landscape Green Reuse Area	TEQUESTA	PALM BEACH	Southeast	City	35-16	12/1/2016	12/8/2016	8.01
BF481603000	Universal Boulevard West ROCC	ORLANDO	ORANGE	Central	County	2016-M-53	12/1/2016	12/13/2016	22.12
BF291602000	Liberty Tampa Property	TAMPA	HILLSBOROUGH	Southwest	City	2016-970	11/29/2016	12/1/2016	0.95
BF501603000	Commerce Park Green Reuse Area	LAKE PARK	PALM BEACH	Southeast	City	52-11-16	11/21/2016	12/7/2016	10.55
BF131603000	Peoples Gas East Parcel Green Reuse Area	NORTH MIAMI BEACH	MIAMI-DADE	Southeast	City	R2016-91	11/15/2016		5.74
BF131604000	Former Melting Pot Green Reuse Area	NORTH MIAMI BEACH	MIAMI-DADE	Southeast	City	R2016-92	11/15/2016		0.62
BF591601000	1775 East Lake Mary Blvd Brownfield Area	SANFORD	SEMINOLE	Central	City	2628	11/14/2016		4.05
BF161602000	St. Johns Village Brownfield Area	JACKSONVILLE	DUVAL	Northeast	City	2016-657-A	11/9/2016		5.86
BF061604000	Former Palm Aire Golf Course III Area	POMPANO BEACH	BROWARD	Southeast	City	2017-53	11/8/2016		35.01
BF061603000	Oakland Park Green Reuse Area	OAKLAND PARK	BROWARD	Southeast	City	R-2016-112	11/2/2016		8.97
BF351601000	Valencia Grove Brownfield Area	EUSTIS	LAKE	Central	City	16-68	10/20/2016		9.25
BF481602000	OEP Universal Blvd: ROCC Brownfield Area	ORLANDO	ORANGE	Central	County	2016-M-53	10/18/2016		12.15
BF531602000	Aida Street Property	LAKELAND	POLK	Southwest	City	5332	10/17/2016		4.80
BF501601000	Lantana Square Green Reuse Area	LAKE WORTH	PALM BEACH	Southeast	County	R-2016-1417	9/27/2016		9.65
BF521602000	Burlington Place Brownfield Area	ST PETERSBURG	PINELLAS	Southwest	City	2016-388	9/22/2016	8/25/2016	1.01
BF641602000	5811 Williamson Blvd	PORT ORANGE	VOLUSIA	Central	City	16-51	9/20/2016		7.14
BF521603000	Burlington Post Brownfield Area	ST PETERSBURG	PINELLAS	Southwest	City	2016-389	8/25/2016		2.17

Area ID	Area Name	City	County	District	Designated by	Resolution #	Resolution Date	Amended Resolution Date	Acreage
BF521601000	Former Zero Corporation Brownfield Area	CLEARWATER	PINELLAS	Southwest	County	16-55	8/23/2016		3.08
BF411601000	Lincoln Village Brownfield Area	BRADENTON	MANATEE	Southwest	City	16-35	7/26/2016		1.59
BF411603000	Minnie L. Rogers Brownfield Area	BRADENTON	MANATEE	Southwest	City	16-37	7/26/2016		3.44
BF411602000	Bryant Commons at MLK Brownfield Area	BRADENTON	MANATEE	Southwest	City	16-36	7/26/2016		1.28
BF131602000	Willow Lake Apartments Green Reuse Area	MIAMI GARDENS	MIAMI-DADE	Southeast	City	2016-119-3018	6/8/2016		10.02
BF641601000	Bruner Road Parcel Cleanup Project	PORT ORANGE	VOLUSIA	Central	County	2016-077	6/2/2016		17.70
BF291601000	Blue Brandon Palms Green Reuse Area	BRANDON	HILLSBOROUGH	Southwest	County	R16-053	5/4/2016		6.28
BF371601000	South Monroe St Corridor Brownfields Area	TALLAHASSEE	LEON	Northwest	City	16-R-04	4/27/2016		237.50
BF161601000	Aquatic Townhomes Brownfield Area	ATLANTIC BEACH	DUVAL	Northeast	City	16-02	4/25/2016		1.67
BF131601000	NW 62nd St Passive Park Green Reuse Area	DORAL	MIAMI-DADE	Southeast	City	16-95	4/20/2016		5.02
BF481601000	Apopka Community Redevelopment Area	APOPKA	ORANGE	Central	City	2016-03	2/17/2016		629.79
BF061602000	Wisdom Village Crossing LP Brownfield Area	FORT LAUDERDALE	BROWARD	Southeast	City	16-17	2/16/2016		0.77
BF061601000	Former Palm Aire Golf Course Phase 2A Area	POMPANO BEACH	BROWARD	Southeast	City	2016-120	2/9/2016		9.99
BF291501000	Former Amazon Hose Property	TAMPA	HILLSBOROUGH	Southwest	City	2015-1050	12/17/2015		2.28
BF131503000	El Portal NE 83rd St. Green Reuse Area	EL PORTAL	MIAMI-DADE	Southeast	City	2015-60	12/15/2015		1.92
BF061503000	Former Palm Aire Golf Course	POMPANO BEACH	BROWARD	Southeast	City	2016-76	12/8/2015		26.83
BF481502000	Orlando Economic Enhancement District - T.C. Two Colonial	ORLANDO	ORANGE	Central	City	121415	12/7/2015		0.57
BF131502000	Doral Legacy Park Green Reuse Area		MIAMI-DADE	Southeast	City	15-221	12/2/2015		19.55
BF501502000	Delray Beach Brownfield Area	DELRAY BEACH	PALM BEACH	Southeast	City	78-15	12/2/2015		6.75
BF481501000	GENE: ROCC (Redeveloping Orange County Communities)	ORLANDO	ORANGE	Central	County	2015-M-42	12/1/2015		46.40
BF161501000	590 Beautyrest Ave.	JACKSONVILLE	DUVAL	Northeast	City	2015-748-A	11/24/2015	12/21/2015	4.90
BF291502000	East Hanna Ave Brownfield Area	TAMPA	HILLSBOROUGH	Southwest	City	2015-908	11/19/2015		11.11
BF061502000	Northwest Gardens V Brownfield Area	FT LAUDERDALE	BROWARD	Southeast	City	15-258	11/17/2015		5.87
BF131501000	Taylor Park Green Reuse Area	NORTH MIAMI BEACH	MIAMI-DADE	Southeast	City	R2015-88	11/12/2015		21.88
BF331501000	I-10 and SR59 Brownfield Area	LLOYD	JEFFERSON	Northwest	County	2015-102015-02	10/20/2015		599.10
BF591501000	The TKG Oviedo Development Brownfield Area	OVIEDO	SEMINOLE	Central	City	3080-15	10/19/2015		10.00
BF061501000	Coral Springs Revitalization Zone	CORAL SPRINGS	BROWARD	Southeast	City	2015-029	8/19/2015		6.18
BF521501000	Former Arab Pest Control Brownfield Area	ST PETERSBURG	PINELLAS	Southwest	City	2015-341	7/23/2015		0.43
BF641501000	Orange City Brownfield Area	ORANGE CITY	VOLUSIA	Central	City	776-15	5/12/2015		687.00
BF081501000	Verandas at Punta Gorda Brownfield Area	PUNTA GORDA	CHARLOTTE	South	City	3150-15	4/1/2015		8.83
BF501501000	Former Servicio Landfill Brownfield Area	WEST PALM BEACH	PALM BEACH	Southeast	City	52-15	3/16/2015		8.94
BF291406000	Peoples Gas System - North Channelside Drive	TAMPA	HILLSBOROUGH	Southwest	City	2014-860	12/11/2014		7.31
BF291405000	Spruce Street Landfill #2	TAMPA	HILLSBOROUGH	Southwest	City	2014-907	11/20/2014		3.42
BF521401000	Former Countryside Executive Golf Course	CLEARWATER	PINELLAS	Southwest	City	14-34	11/14/2014	12/4/2014	44.28
BF481401000	Orlando Economic Enhancement District - Hoffner Avenue	ORLANDO	ORANGE	Central	City	102014	10/20/2014		8.21
BF131403000	Rucks Park Site	NORTH MIAMI	MIAMI-DADE	Southeast	City	2014-R-83	9/23/2014		6.64
BF161402000	Gerdau Ameristeel Brownfield Area	JACKSONVILLE	DUVAL	Northeast	City	2014-496	9/2/2014		149.28
BF161403000	L&M Griffin Properties #3 Brownfield Area	JACKSONVILLE	DUVAL	Northeast	City	2014-497	9/2/2014		3.52
BF291403000	Hudson Nursery Brownfield Area	TAMPA	HILLSBOROUGH	Southwest	County	R14-095	7/7/2014		10.35

Area ID	Area Name	City	County	District	Designated by	Resolution #	Resolution Date	Amended Resolution Date	Acreage
BF291402000	Delaney Creek Brownfield Redevelopment Area		HILLSBOROUGH	Southwest	County	R14-094	7/1/2014		36.18
BF291404000	Port Redwing Access Outparcel Brownfield Area	TAMPA	HILLSBOROUGH	Southwest	County	R14-096	7/1/2014		31.24
BF131401000	Miami-Dade Regional Soccer Park BF Redevelopment Area	MEDLEY	MIAMI-DADE	Southeast	County	R-494-14	6/3/2014		47.34
BF161401000	Penman Plaza Brownfield Area	NEPTUNE BEACH	DUVAL	Northeast	City	2014-04	4/17/2014		11.00
BF501401000	480 US Highway 27 North	SOUTH BAY	PALM BEACH	Southeast	City	11-2014	4/15/2014		0.29
BF291401000	Port Redwing Property	GIBSONTON	HILLSBOROUGH	Southwest	County	R14-015	2/11/2014		188.27
BF641401000	City of DeBary Brownfield Area	DEBARY	VOLUSIA	Central	City	14-01	1/15/2014		492.32
BF061302000	Sunrise Wal-Mart	SUNRISE	BROWARD	Southeast	City	13-199	12/10/2013		16.64
BF351301000	Palm Plaza Brownfield Area	LEESBURG	LAKE	Central	City	9322	12/9/2013		0.28
BF411301000	The Pumphouse Station Brownfield Area	BRADENTON	MANATEE	Southwest	City	13-47	11/13/2013		6.70
BF521304000	Seminole Mall	SEMINOLE	PINELLAS	Southwest	City	12-2013	11/12/2013		39.56
BF291305000	Tampa Water Works Park Brownfield Area	TAMPA	HILLSBOROUGH	Southwest	City	2013-865	11/7/2013		5.59
BF291306000	Nebraska Avenue Brownfield Area	TAMPA	HILLSBOROUGH	Southwest	City	2013-867	11/7/2013	11/14/2016	1.54
BF291304000	Palmetto Tampa-Columbus Area	TAMPA	HILLSBOROUGH	Southwest	City	2013-765	10/13/2013		1.70
BF641303000	Local Economic Advancement District 2 (LEAD 2)	DE LEON SPRINGS	VOLUSIA	Central	County	2013-227	10/10/2013		12.97
BF641302000	Local Economic Advancement District 1 (LEAD 1)	DE LEON SPRINGS	VOLUSIA	Central	County	2013-226	10/10/2013		92.61
BF291303000	Former Redwing Trucking Facility Area	TAMPA	HILLSBOROUGH	Southwest	County	R13-158	10/8/2013		31.30
BF291307000	Wal-Mart Tampa (Hillsborough)	TAMPA	HILLSBOROUGH	Southwest	City	2013-766	10/3/2013		10.73
BF131303000	South Miami Plaza Perservation Site	SOUTH MIAMI	MIAMI-DADE	Southeast	City	202-13-14020	9/17/2013		2.49
BF641301000	Former DeLand Country Club Economic Enhancement Area	DELAND	VOLUSIA	Central	City	2013-111	8/19/2013	12/16/2013	103.38
BF481304000	Orlando Economic Enhancement District-3117 S. Orange	ORLANDO	ORANGE	Central	City	7-2	8/5/2013		0.72
BF481303000	Orlando Economic Enhancement District	ORLANDO	ORANGE	Central	City	7-1	8/5/2013		3.14
BF491301000	West 192 Development Authority Area		OSCEOLA	Central	County	13-029R	7/1/2013		14190.37
BF521303000	Former Jones Chemical Site Brownfield Area	SAINT PETERSBURG	PINELLAS	Southwest	City	2013-248	6/20/2013		2.50
BF131304000	27th Avenue Corridor Greenpowerment Zone	NORTH MIAMI	MIAMI-DADE	Southeast	City	2013-159-1955-Z-133	6/12/2013		46.21
BF581301000	Venetian Walk	VENICE	SARASOTA	South	City	2013-11	6/11/2013		6.50
BF531301000	Lake Alfred Downtown Economic Enhancement District	LAKE ALFRED	POLK	Southwest	City	12-13	6/3/2013		871.05
BF531302000	Lake Alfred Northeast Economic Enhancement District	LAKE ALFRED	POLK	Southwest	City	10-13	6/3/2013		589.40
BF531303000	Lake Alfred East Economic Enhancement District	LAKE ALFRED	POLK	Southwest	City	11-13	6/3/2013		169.70
BF531304000	Lake Alfred South Economic Enhancement District	LAKE ALFRED	POLK	Southwest	City	13-13	6/3/2013		22.10
BF061301000	5001 North Federal Highway	POMPANO BEACH	BROWARD	Southeast	City	2013-244	5/28/2013		8.41
BF521302000	Pinellas Heights Brownfield	LARGO	PINELLAS	Southwest	City	2096	5/7/2013		8.27
BF291302000	Former Gulf Coast Metals	TAMPA	HILLSBOROUGH	Southwest	City	2013-328	5/2/2013		3.24
BF481301000	Pine Hills ROCC		ORANGE	Central	County	2013-M-14	4/23/2013		287.59
BF481302000	Atlantic Gulf Colonial Brownfield: ROCC		ORANGE	Central	County	2013-M-08	3/12/2013		6.92
BF461301000	203 Bayou Woods Dr NW Brownfield Area	FT WALTON BEACH	OKALOOSA	Northwest	City	2013-7	3/12/2013		6.80
BF291301000	Plant City Industrial Park	PLANT CITY	HILLSBOROUGH	Southwest	City	42-2013	3/11/2013		1512.77
BF131302000	Coral Terrace Brownfield Area		MIAMI-DADE	Southeast	County	R-142-13	3/5/2013		18.00
BF521301000	2677 Roosevelt Boulevard	LARGO	PINELLAS	Southwest	City	2089	3/5/2013		13.66

Area ID	Area Name	City	County	District	Designated by	Resolution #	Resolution Date	Amended Resolution Date	Acreage
BF131301000	Land South Brownfield Area	NORTH MIAMI	MIAMI-DADE	Southeast	City	R-2013-4	1/8/2013		0.26
BF291205000	Lincoln Park Brownfield Area	PLANT CITY	HILLSBOROUGH	Southwest	City	185-2012	12/10/2012		37.00
BF131203000	Antigua Redevelopment Site	NORTH MIAMI BEACH	MIAMI-DADE	Southeast	City	R2012-88	12/4/2012		17.69
BF411201000	Palmetto Economic Enhancement District	PALMETTO	MANATEE	Southwest	City	2012-39	12/3/2012		1091.85
BF531206000	K.C. Industries Properties, LLC Brownfield Area	MULBERRY	POLK	Southwest	County	2012-123	11/20/2012		200.00
BF061203000	Bokamper's Sports Bar & Grille Area	FORT LAUDERDALE	BROWARD	Southeast	City	12-220	11/6/2012		1.31
BF051202000	Cape Canaveral Economic Enhancement District (CCEED)	CAPE CANAVERAL	BREVARD	Central	City	2012-21	10/16/2012		535.79
BF521203000	Briarwood RV Park Brownfield	LARGO	PINELLAS	Southwest	City	2077	10/2/2012		13.80
BF641204000	Deltona Boulevard Economic Development Zone	DELTONA	VOLUSIA	Central	City	2012-28	9/17/2012		36.33
BF131201000	Homestead Wal-Mart	HOMESTEAD	MIAMI-DADE	Southeast	City	R2012-08-70	8/22/2012		5.80
BF521202000	Ulmerton Road Opportunity Corridor (UROC) Area-wide Brownfield		PINELLAS	Southwest	County	15-51	8/7/2012	7/9/2015	14368.50
BF131202000	Solabella Apartments Brownfield		MIAMI-DADE	Southeast	City	2012-94-1689-Z-124	7/1/2012		4.88
BF501201000	Former Pike Utilities Brownfield Area	LAKE WORTH	PALM BEACH	Southeast	County	R-2012-0946	7/10/2012		9.79
BF291202000	Photoengraving Incorporated	TAMPA	HILLSBOROUGH	Southwest	City	2012-620	6/28/2012		0.60
BF291203000	North Clark Avenue	TAMPA	HILLSBOROUGH	Southwest	City	2012-621	6/28/2012		19.10
BF061201000	Captiva Cove Brownfield Area	POMPANO BEACH	BROWARD	Southeast	City	2012-251	6/12/2012		19.66
BF521201000	Sam's Club Site Area	SAINT PETERSBURG	PINELLAS	Southwest	City	2012-258	6/7/2012		14.00
BF641203000	DeLand Economic Enhancement District	DELAND	VOLUSIA	Central	City	2012-25	5/21/2012		1.86
BF531205000	Cigar Factory Brownfield Area	BARTOW	POLK	Southwest	City	12-3796-R	4/16/2012		2.06
BF101201000	938 Hall Park Road	GREEN COVE SPRINGS	CLAY	Northeast	County	11/12-55	3/27/2012		4.74
BF291201000	Former Wood Preserving Site		HILLSBOROUGH	Southwest	County	R12-025	3/7/2012		17.45
BF051201000	Unincorporated Brevard County Area		BREVARD	Central	County	2012-039	3/1/2012		3.00
BF591201000	Trademark Metals Recycling Brownfield Area		SEMINOLE	Central	County	2012-R-51	2/28/2012		7.15
BF641202000	US 1 North Brownfield Area	ORMOND BEACH	VOLUSIA	Central	City	2012-21	2/21/2012		2113.00
BF061202000	Job Acceleration Zone (JAZ)	FT LAUDERDALE	BROWARD	Southeast	City	12-137	2/21/2012		5.84
BF531201000	Fort Meade CRA/Industrial Redevelopment Area	FORT MEADE	POLK	Southwest	City	R11-07	2/14/2012		2937.32
BF531204000	Fort Meade Outdoor Recreation Redevelopment Area	FORT MEADE	POLK	Southwest	City	R11-07	2/14/2012		427.20
BF531203000	Fort Meade Residential Redevelopment Area #2	FORT MEADE	POLK	Southwest	City	R11-07	2/14/2012		13.76
BF531202000	Fort Meade Residential Redevelopment Area #1	FORT MEADE	POLK	Southwest	City	R11-07	2/14/2012		12.25
BF291204000	West Saint Louis Street	TAMPA	HILLSBOROUGH	Southwest	City	2012-133	2/9/2012		12.00
BF221201000	Moore Haven Brownfield Area	MOORE HAVEN	GLADES	South	City	2012-02	2/7/2012		214.44
BF511201000	Arbours at Fort King		PASCO	Southwest	County	12-82	1/10/2012		13.54
BF641201000	Granada Economic Opportunity Zone	ORMOND BEACH	VOLUSIA	Central	City	2012-02	1/3/2012	5/21/2013	398.00
BF291102000	GC Partners LLC Brownfield Area		HILLSBOROUGH	Southwest	County	R11-137	12/13/2011		0.63
BF161101000	5441 West 5th Street	JACKSONVILLE	DUVAL	Northeast	City	2011-719-A	12/13/2011		4.29
BF131103000	Mirabella Brownfield Area		MIAMI-DADE	Southeast	County	R-1038-11	12/6/2011		10.55
BF121101000	3072 West U.S. Highway 90 Area	LAKE CITY	COLUMBIA	Northeast	City	2011-095	11/21/2011		2.56
BF561101000	Former H.D. King Power Plant	FORT PIERCE	ST. LUCIE	Southeast	City	Dec-37	11/21/2011	7/16/2012	6.68
BF061103000	ZF Brownfield Area	MIRAMAR	BROWARD	Southeast	City	12-32	11/15/2011		16.00

Area ID	Area Name	City	County	District	Designated by	Resolution #	Resolution Date	Amended Resolution Date	Acreage
BF481101000	C.L. Industries: ROCC		ORANGE	Central	County	2011-M-50	11/1/2011		2.33
BF461101000	25 Miracle Strip Parkway SW Area	FT WALTON BEACH	OKALOOSA	Northwest	City	2011-33	10/25/2011	7/13/2012	0.67
BF291101000	Pendola Point Brownfield Area		HILLSBOROUGH	Southwest	County	R11-115	10/11/2011		168.00
BF361101000	Cleveland Avenue Brownfield Area	FORT MYERS	LEE	South	City	2011-32	9/19/2011		617.00
BF051106000	Cocoa Economic Enhancement District	COCOA	BREVARD	Central	City	2011-099	9/13/2011		882.71
BF131102000	1350 West 49 Street	HIALEAH	MIAMI-DADE	Southeast	City	11-95	9/13/2011		4.65
BF491101000	Kissimmee Environmental Redevelopment Area (KERA)	KISSIMMEE	OSCEOLA	Central	City	14-2020	8/31/2011	8/18/2020	4514.32
BF411101000	The Manatee River Hotel Brownfield Area	BRADENTON	MANATEE	Southwest	City	11-45	8/17/2011		0.85
BF081102000	The West Henry Street Enhancement Zone	PUNTA GORDA	CHARLOTTE	South	City	2939-11	8/10/2011		19.20
BF531101000	Wahneta Community		POLK	Southwest	County	11-101	7/26/2011		7.44
BF591101000	Longwood Economic Enhancement Program	LONGWOOD	SEMINOLE	Central	City	12-1303	7/18/2011	4/2/2012	1099.53
BF061102000	Hollywood Incinerator Ash Dump (HIAD)	HOLLYWOOD	BROWARD	Southwest	City	R-2011-199	7/13/2011		30.72
BF641101000	Municipal Airport and the Airport Industrial Park Area	NEW SMYRNA BEACH	VOLUSIA	Central	City	25-11	6/28/2011		739.63
BF051105000	Northwest Corner of SR405 and US Highway 1	TITUSVILLE	BREVARD	Central	City	21-2011	6/14/2011		14.45
BF051104000	West 50 Plaza LLC	TITUSVILLE	BREVARD	Central	City	20-2011	6/14/2011		16.83
BF051107000	Industrial Park Brownfield Area	TITUSVILLE	BREVARD	Central	City	17-2011	6/14/2011		426.98
BF051108000	Bobbi Lane Brownfield Area	TITUSVILLE	BREVARD	Central	City	18-2011	6/14/2011		43.76
BF051103000	4710 South Washington Avenue	TITUSVILLE	BREVARD	Central	City	19-2011	6/14/2011		31.86
BF131101000	8400 Coral Way	MIAMI	MIAMI-DADE	Southeast	County	R-412-11	5/17/2011		10.76
BF131104000	Doral Décor District Brownfield Area	DORAL	MIAMI-DADE	Southeast	City	11-56	5/11/2011		247.23
BF171103000	Brownsville Redevelopment Area	PENSACOLA	ESCAMBIA	Northwest	County	R2011-68	5/5/2011		1495.33
BF171106000	Warrington Redevelopment Area	PENSACOLA	ESCAMBIA	Northwest	County	R2011-68	5/5/2011		2289.48
BF311101000	Fellsmere Economic Enhancement District	FELLSMERE	INDIAN RIVER	Central	City	2012-29	5/5/2011	7/19/2012	1012.00
BF171102000	Barrancas Redevelopment Area	PENSACOLA	ESCAMBIA	Northwest	County	R2011-68	5/5/2011		671.75
BF171104000	Englewood Redevelopment Area	PENSACOLA	ESCAMBIA	Northwest	County	R2011-68	5/5/2011		1108.71
BF171105000	Palafox Redevelopment Area	PENSACOLA	ESCAMBIA	Northwest	County	R2011-68	5/5/2011		1723.85
BF051102000	Space Coast Regional Airport and Arthur Dunn Airpark Area	TITUSVILLE	BREVARD	Central	City	12-2011	4/12/2011		1718.29
BF031101000	450 6th Street, LLC Brownfield Area	PANAMA CITY	BAY	Northwest	City	22211.2	2/22/2011		11.65
BF351102000	Mount Dora Community Redevelopment Area	MOUNT DORA	LAKE	Central	City	2011-04	2/15/2011		397.13
BF351101000	Northeast Community Redevelopment Area	MOUNT DORA	LAKE	Central	City	2011-03	2/15/2011		462.21
BF171101000	3300 Mobile Highway Brownfield Area	PENSACOLA	ESCAMBIA	Northwest	County	R2011-9	1/20/2011		0.98
BF061101000	Margate Economic Enhancement District (MEED)	MARGATE	BROWARD	Southeast	City	11-826	1/19/2011		576.75
BF291001000	North Ybor Channel Brownfield Area	TAMPA	HILLSBOROUGH	Southwest	City	2010-1185	12/16/2010		25.70
BF461002000	Hollywood Blvd. Brownfield Area	FORT WALTON BEACH	OKALOOSA	Northwest	City	21010-42	12/14/2010		236.00
BF361001000	Downtown Waterfront Brownfield Area	FT MYERS	LEE	South	City	2010-40	12/6/2010		19.27
BF411001000	Former Wellcraft Facility Brownfield Area		MANATEE	Southwest	County	R-10-198	12/2/2010		30.80
BF291002000	Midtown Brownfield Area	PLANT CITY	HILLSBOROUGH	Southwest	City	210-2010	11/22/2010		83.59
BF511002000	Dade City Business Center Area		PASCO	Southwest	County	11-66	11/16/2010		300.00
BF511001000	Dade City Business Area Brownfield	DADE CITY	PASCO	Southwest	County	2010-32	11/9/2010		150.00

Area ID	Area Name	City	County	District	Designated by	Resolution #	Resolution Date	Amended Resolution Date	Acreage
BF051006000	Rockledge Redevelopment District	ROCKLEDGE	BREVARD	Central	City	2010-688	10/6/2010	12/5/2012	1201.46
BF591001000	Oviedo Seminole Economic Enhancement District	OVIEDO	SEMINOLE	Central	City	2222-10	10/4/2010		1600.36
BF351002000	Umatilla Brownfield Area	UMATILLA	LAKE	Central	City	2010-15	6/15/2010		131.22
BF641003000	The Riverwalk Project Area	PORT ORANGE	VOLUSIA	Central	City	Oct-40	6/15/2010		43.41
BF611001000	Live Oak Community Redevelopment Area	LIVE OAK	SUWANNEE	Northeast	City	10-06	6/15/2010		903.29
BF181001000	Flagler Economic Enhancement Districts		FLAGLER	Northeast	County	2015-35	6/7/2010	5/4/2015	4010.83
BF641006000	Edgewater Redevelopment Area (ERA)	EDGEWATER	VOLUSIA	Central	City	2010-O-07	5/17/2010	7/1/2024	1160.01
BF051005000	WestTech S.M.A.R.T.	PALM BAY	BREVARD	Central	City	2010-18	5/6/2010		1713.00
BF051004000	Central Interchange S.M.A.R.T.	PALM BAY	BREVARD	Central	City	2010-15	5/6/2010		1320.00
BF051003000	North Interchange S.M.A.R.T.	PALM BAY	BREVARD	Central	City	2010-16	5/6/2010		132.00
BF051002000	Riverview S.M.A.R.T.	PALM BAY	BREVARD	Central	City	2010-17	5/6/2010		2782.00
BF531001000	Chain of Lakes Redevelopment Incentive District-Brownfield Area	WINTER HAVEN	POLK	Southwest	City	R-10-09	4/12/2010		158.00
BF641002000	Holly Hill Special Economic Enhancement District	HOLLY HILL	VOLUSIA	Central	City	2010-R-10	2/23/2010		737.40
BF461001000	Unincorporated Greater Lovejoy Community		OKALOOSA	Northwest	County	10-49	2/16/2010		136.49
BF641004000	Central Business Corridors Economic Enhancement Area	DAYTONA BEACH	VOLUSIA	Central	City	10-21	2/3/2010		3474.63
BF641005000	1601 Tonia Road	NEW SMYRNA BEACH	VOLUSIA	Central	City	01-10	1/26/2010		4.99
BF351001000	Carver Heights/Montclair Area CRA	LEESBURG	LAKE	Central	City	28	1/25/2010		1162.22
BF641001000	South Daytona Florida Brownfields Economic Enhancement Area	SOUTH DAYTONA	VOLUSIA	Central	City	09-25	1/12/2010		647.03
BF500903000	Boynton Beach Community Redevelopment Area	BOYNTON BEACH	PALM BEACH	Southeast	City	R09-173	12/1/2009		293.41
BF110901000	Bayshore Cultural Arts Catalytic Facility for Redevelopment	NAPLES	COLLIER	South	County	2009-237	11/10/2009		17.67
BF290901000	Lakewood Pointe Brownfield Area	SEFFNER	HILLSBOROUGH	Southwest	County	R09-137	10/14/2009		15.00
BF050901000	West Melbourne Area Voluntary Enhancement (WAVE) District	WEST MELBOURNE	BREVARD	Central	City	2009-30	10/6/2009	5/17/2011	908.27
BF480901000	Bonita Fountains Phase 2 ROCC		ORANGE	Central	County	2009-M-32	8/4/2009		44.77
BF500902000	Pahokee Plaza Area	PAHOKEE	PALM BEACH	Southeast	City	2009-59	7/16/2009		2.32
BF640901000	New Smyrna Beach Brownfield Enhancement Zone (NSB BREZ)	NEW SMYRNA BEACH	VOLUSIA	Central	City	27-09	7/15/2009		645.76
BF160901000	Imeson Consolidated Services, LLC, Site	JACKSONVILLE	DUVAL	Northeast	City	2009-271-A	5/1/2009		45.70
BF590901000	Goldsboro Redevelopment and Economic Enhancement Neighborhood (GREEN)	SANFORD	SEMINOLE	Central	City	2133	5/1/2009		53.85
BF500901000	Greater Lake Worth Park of Commerce	LAKE WORTH	PALM BEACH	Southeast	City	03-2009	3/16/2009		453.00
BF420901000	Maricamp Brownfields Area	OCALA	MARION	Central	City	2009-18	2/3/2009		33.89
BF520804000	Gateway Centre Business Park Addition One Tract A	ST PETERSBURG	PINELLAS	Southwest	City	2008-649	12/30/2008		93.40
BF120801000	Lake City Brownfields Area	LAKE CITY	COLUMBIA	Northeast	City	2008-082	12/15/2008		2476.26
BF290804000	Crosland-Varela Westshore Area	TAMPA	HILLSBOROUGH	Southwest	City	2008-1365	12/11/2008	12/20/2012	6.86
BF290803000	Envirofocus Technologies Brownfield Area	TAMPA	HILLSBOROUGH	Southwest	City	2008-1364	12/11/2008	12/10/2020	36.66
BF060801000	Dania Beach Brownfield Area	DANIA BEACH	BROWARD	Southeast	City	2008-227	12/9/2008		1351.35
BF650801000	St. Marks Refinery Property	ST MARKS	WAKULLA	Northwest	City	2008-15	11/24/2008		56.73
BF590807000	Sanford Waterfront Economic Enhancement Area	SANFORD	SEMINOLE	Central	City	2124	11/24/2008		789.37
BF480805000	Orlando Commerce Park ROCC Area	ORLANDO	ORANGE	Central	County	2008-M-58	11/11/2008		51.36
BF580801000	1783-1785 & 1791 Tamiami Trail Area	VENICE	SARASOTA	South	County	2008-215	10/14/2008		0.58
BF460801000	Commerce and Technology Park Area	FT WALTON BEACH	OKALOOSA	Northwest	City	08-38	10/14/2008		294.72

Area ID	Area Name	City	County	District	Designated by	Resolution #	Resolution Date	Amended Resolution Date	Acreage
BF480803000	Innovation Way ROCC		ORANGE	Central	County	2008-M-47	9/19/2008		5527.36
BF050802000	Melbourne Economic Enhancement District (MEED)	MELBOURNE	BREVARD	Central	City	3017	9/19/2008		5939.68
BF520802000	Pinellas County Largo Area-wide Brownfield	LARGO	PINELLAS	Southwest	City	2050	9/18/2008	9/6/2011	909.95
BF590804000	Village Walk S.E.E.D. / Brownfield Area	WINTER SPRINGS	SEMINOLE	Central	City	2008-37	9/17/2008		418.55
BF590803000	Town Center S.E.E.D. / Brownfield Area	WINTER SPRINGS	SEMINOLE	Central	City	2008-36	9/17/2008		548.72
BF590805000	Greenway Interchange S.E.E.D. / Brownfield Area	WINTER SPRINGS	SEMINOLE	Central	City	2008-38	9/17/2008		411.12
BF520805000	Pinellas County Ashley Place Brownfield		PINELLAS	Southwest	County	08-153	9/16/2008		3.66
BF590809000	Unincorporated Seminole Economic Enhancement District		SEMINOLE	Central	County	2008-R-213	9/9/2008		954.72
BF160804000	720 Atlantic Boulevard Brownfield Area	NEPTUNE BEACH	DUVAL	Northeast	City	2008-06	8/20/2008	12/12/2002	1.27
BF420802000	Northwest Blichton Road Area	OCALA	MARION	Central	City	2008-86	8/19/2008		73.04
BF520801000	Pinellas County Dansville Brownfield Area	LARGO	PINELLAS	Southwest	County	08-117	8/19/2008		60.39
BF170802000	2800 Hollywood Avenue	PENSACOLA	ESCAMBIA	Northwest	County	R2008-141	8/18/2008		18.91
BF590806000	The PLI Public Lands and Institutions Zoning Area		SEMINOLE	Central	County	2008-R-201	8/12/2008		69.95
BF160803000	Former Jacksonville Raceway Area	JACKSONVILLE	DUVAL	Northeast	City	2008-430-A	7/29/2008		117.03
BF160802000	The Opportunity Project	JACKSONVILLE	DUVAL	Northeast	City	2008-173-A	7/23/2008		0.46
BF160801000	Tree Hills Nature Center	JACKSONVILLE	DUVAL	Northeast	City	2008-172-A	7/23/2008		21.32
BF350801000	City of Tavares CRA Economic Enhancement District	TAVARES	LAKE	Central	City	2008-22	7/23/2008		384.67
BF050801000	Casbah Properties LLC Brownfields Area	MELBOURNE	BREVARD	Central	City	2098	7/22/2008		0.32
BF130837000	Golden Glades E		MIAMI-DADE	Southeast	County	R-149-08	7/11/2008		197.72
BF130836000	Golden Glades D		MIAMI-DADE	Southeast	County	R-149-08	7/11/2008		41.74
BF130824000	Biscayne Park		MIAMI-DADE	Southeast	County	R-149-08	7/11/2008		232.41
BF130826000	Eastern Shore A		MIAMI-DADE	Southeast	County	R-149-08	7/11/2008		5.04
BF130827000	Eastern Shore B		MIAMI-DADE	Southeast	County	R-149-08	7/11/2008		143.21
BF130828000	Eastern Shore C		MIAMI-DADE	Southeast	County	R-149-08	7/11/2008		95.26
BF130829000	Flagler Westside		MIAMI-DADE	Southeast	County	R-149-08	7/11/2008		120.51
BF130830000	Florida City - Unincorporated		MIAMI-DADE	Southeast	County	R-149-08	7/11/2008		419.01
BF130831000	Fountainbleau		MIAMI-DADE	Southeast	County	R-149-08	7/11/2008		41.23
BF130832000	Glenvar Heights		MIAMI-DADE	Southeast	County	R-149-08	7/11/2008		57.48
BF130833000	Golden Glades A		MIAMI-DADE	Southeast	County	R-149-08	7/11/2008		165.30
BF130834000	Golden Glades B		MIAMI-DADE	Southeast	County	R-149-08	7/11/2008		30.85
BF130825000	Coral Terrace		MIAMI-DADE	Southeast	County	R-149-08	7/11/2008		317.11
BF130845000	Tamiami		MIAMI-DADE	Southeast	County	R-149-08	7/11/2008		214.32
BF130835000	Golden Glades C		MIAMI-DADE	Southeast	County	R-149-08	7/11/2008		62.94
BF130846000	Westchester		MIAMI-DADE	Southeast	County	R-149-08	7/11/2008		489.72
BF130844000	Sweetwater E		MIAMI-DADE	Southeast	County	R-149-08	7/11/2008		174.81
BF130843000	Sweetwater D		MIAMI-DADE	Southeast	County	R-149-08	7/11/2008		995.56
BF130842000	Ojus		MIAMI-DADE	Southeast	County	R-149-08	7/11/2008		522.16
BF130841000	Lingren		MIAMI-DADE	Southeast	County	R-149-08	7/11/2008		90.58
BF130840000	Kendall West		MIAMI-DADE	Southeast	County	R-149-08	7/11/2008		271.16

Area ID	Area Name	City	County	District	Designated by	Resolution #	Resolution Date	Amended Resolution Date	Acreage
BF130839000	Golden Glades G		MIAMI-DADE	Southeast	County	R-149-08	7/11/2008		216.72
BF130838000	Golden Glades F		MIAMI-DADE	Southeast	County	R-149-08	7/11/2008		4.82
BF130847000	Westview		MIAMI-DADE	Southeast	County	R-149-08	7/11/2008		0.77
BF640802000	New Port LLP	PORT ORANGE	VOLUSIA	Central	City	08-19	6/17/2008		32.24
BF290802000	Kracker Road Area	TAMPA	HILLSBOROUGH	Southwest	County	R08-071	4/24/2008		112.00
BF590808000	Seminole Economic Enhancement District- Winter Springs	WINTER SPRINGS	SEMINOLE	Central	City	2008-10	2/26/2008		109.45
BF290801000	Lakeside Station Brownfield area	PLANT CITY	HILLSBOROUGH	Southwest	City	36-2008	2/25/2008		1286.08
BF590810000	Casselberry City Properties/S.E.E.D	CASSELBERRY	SEMINOLE	Central	City	08-1861	2/25/2008		7.27
BF590802000	Casselberry CRA /S.E.E.D	CASSELBERRY	SEMINOLE	Central	City	08-1860	2/25/2008		546.33
BF420801000	Busbee Quarters Brownfield Area	OCALA	MARION	Central	City	2008-37	2/19/2008		75.68
BF590801000	Seminole Economic Enhancement District - Lake Mary	WINTER SPRINGS	SEMINOLE	Central	City	824	2/11/2008	8/13/2008	15.97
BF130814000	Miami Industrial	MIAMI	MIAMI-DADE	Southeast	County	R-149-08	2/7/2008		174.55
BF170801000	Lloyd Street and Morris Court Brownfield Area	PENSACOLA	ESCAMBIA	Northwest	City	04-08	1/31/2008		2.05
BF480801000	Maitland Downtown Economic Enhancement District	MAITLAND	ORANGE	Central	City	1-2008	1/28/2008		188.78
BF290706000	Central Park Village Brownfield Area	TAMPA	HILLSBOROUGH	Southwest	City	2007-1300	12/20/2007		28.90
BF290703000	Tampa International Center Brownfield Area	TAMPA	HILLSBOROUGH	Southwest	City	2007-1301	12/20/2007		29.36
BF590703000	Fern Park Lowes	FERN PARK	SEMINOLE	Central	County	2007-R-232	12/11/2007		9.45
BF290704000	Tampa Tank and Welding Property	TAMPA	HILLSBOROUGH	Southwest	County	R07-221	12/11/2007		4.31
BF590702000	Former Central Florida Drum Facility		SEMINOLE	Central	City	2014-10	12/11/2007	7/28/2014	6.45
BF050701000	Manatee Point Brownfield Area	MELBOURNE	BREVARD	Central	City	2069	12/11/2007		0.48
BF560702000	S & S Land Company Brownfield Area	FORT PIERCE	ST. LUCIE	Southeast	City	07-50	11/19/2007	12/28/2017	2.33
BF480704000	Baratta ROCC Brownfield Area	APOPKA	ORANGE	Central	County	2007-M-60	11/13/2007		3.05
BF590704000	Sanford Economic Enhancement District Area	SANFORD	SEMINOLE	Central	City	2093	11/12/2007		1080.76
BF290705000	Westshore Landings One Brownfield Area	TAMPA	HILLSBOROUGH	Southwest	City	2007-1181	11/8/2007		3.70
BF570701000	Bell Ridge Brownfield Area	PACE	SANTA ROSA	Northwest	County	2007-39	11/8/2007		49.03
BF250701000	Hardee County Enterprise Zone	WAUCHULA	HARDEE	Southwest	County	08-06	11/1/2007		11931.70
BF480703000	Holden Heights ROCC Brownfield Area	ORLANDO	ORANGE	Central	County	2007-M-31	8/28/2007		322.58
BF520701000	Bryan Dairy Road Brownfield Area	PINELLAS PARK	PINELLAS	Southwest	County	07-103	8/7/2007		3.42
BF440701000	Old Baltuff Dump Site Brownfield Area	MIDDLE TORCH KEY	MONROE	South	County	261-2007	7/18/2007		12.81
BF640701000	William Lofts Brownfield Area	DAYTONA BEACH	VOLUSIA	Central	City	07-200	6/14/2007		3.70
BF480702000	Mills Park Brownfield Area	ORLANDO	ORANGE	Central	City	041607	4/23/2007		14.00
BF170701000	Former Runyan Shipyard	PENSACOLA	ESCAMBIA	Northwest	City	9-07	4/12/2007		13.80
BF290702000	Former TECO Hookers Point Brownfield Area	TAMPA	HILLSBOROUGH	Southwest	City	2007-365	4/12/2007		31.97
BF500701000	Carver Square Brownfield Area	DELRAY BEACH	PALM BEACH	Southeast	City	20-07	4/3/2007		2.42
BF590701000	Former Microvia Brownfield Area	CASSELBERRY	SEMINOLE	Central	City	07-1767	3/12/2007		8.39
BF560701000	Coral Square Shoppes	FORT PIERCE	ST. LUCIE	Southeast	City	07-05	2/5/2007		15.34
BF290701000	Park N Shade Brownfield Area	RUSKIN	HILLSBOROUGH	Southwest	County	R07-009	1/10/2007		18.30
BF290607000	Avion Park at Westshore Brownfield Area	TAMPA	HILLSBOROUGH	Southwest	City	2006-1579	12/14/2006		18.89
BF130601000	Medley Redevelopment Brownfields Area	MEDLEY	MIAMI-DADE	Southeast	City	C-959	12/4/2006		9.27

Area ID	Area Name	City	County	District	Designated by	Resolution #	Resolution Date	Amended Resolution Date	Acreage
BF550601000	St. Augustine Ponce de Leon	ST AUGUSTINE	ST. JOHNS	Northeast	City	2006-20	11/13/2006		283.54
BF170602000	1810 Barrancas Avenue Brownfield Area	PENSACOLA	ESCAMBIA	Northwest	City	37-06	11/9/2006		3.00
BF290606000	Tampa Armature Works Brownfield Area	TAMPA	HILLSBOROUGH	Southwest	City	2006-1376	10/26/2006	12/29/2016	4.27
BF170603000	Enterkin Property Brownfield Area	PENSACOLA	ESCAMBIA	Northwest	County	R2006-183	9/21/2006		0.46
BF290603000	Circle Tampa Ventures I	TAMPA	HILLSBOROUGH	Southwest	City	2006-1148	9/7/2006		28.00
BF290604000	Honeywell	TAMPA	HILLSBOROUGH	Southwest	County	R06-176	8/22/2006		18.79
BF180601000	Bunnell Industrial, LLC Brownfield Area	BUNNELL	FLAGLER	Northeast	County	2006-86	8/21/2006		43.69
BF370601000	Sunland Hospital Parcel I Brownfield Area	TALLAHASSEE	LEON	Northwest	City	06-R-34	7/1/2006	9/27/2006	5.18
BF560601000	2525 Center Road Fort Pierce	FORT PIERCE	ST. LUCIE	Southeast	County	06-036	6/6/2006		56.62
BF060601000	Sunrise Boulevard/NW 31st Avenue Brownfield Area	LAUDERHILL	BROWARD	Southeast	City	06R-05-325	5/8/2006		93.00
BF520601000	Belleair Wastewater Treatment Plant and Town Garage		PINELLAS	Southwest	County	06-76	5/2/2006		3.00
BF290601000	Grand Central at Kennedy Property Brownfield Area	TAMPA	HILLSBOROUGH	Southwest	City	2006-509	4/27/2006		4.00
BF290602000	Former 43rd Street Bay Drum Site Brownfield Area	TAMPA	HILLSBOROUGH	Southwest	City	2006-510	4/27/2006		4.00
BF170504000	Century Town Limits Brownfield Area	CENTURY	ESCAMBIA	Northwest	City	16-05	4/27/2006		583.00
BF280601000	Highlands County Brownfield Area		HIGHLANDS	South	County	05-06-130	3/7/2006		12268.00
BF480601000	Hughes Supply Mega Center Brownfield Area	ORLANDO	ORANGE	Central	City	60213701	2/13/2006		73.00
BF360501000	3250 Metro Parkway	FORT MYERS	LEE	South	City	2005-59	11/21/2005		9.86
BF170503000	501 North Navy Boulevard	PENSACOLA	ESCAMBIA	Northwest	County	R2005-201	11/17/2005		17.00
BF160506000	Hughes Electrical Brownfield Area	JACKSONVILLE	DUVAL	Northeast	City	2005-1179-A	11/8/2005		1.00
BF060501000	Turner Envirologic Area	DEERFIELD BEACH	BROWARD	Southeast	City	2005-179	10/18/2005		4.14
BF520502000	Pinellas County Lealman Area-Wide Brownfield Area		PINELLAS	Southwest	County	05-199	9/20/2005		1500.00
BF170502000	603 West Romana Street Area	PENSACOLA	ESCAMBIA	Northwest	City	39-05	9/15/2005		1.00
BF160505000	1915 Wigmore Street (Jacksonville Maritime Partners)	JACKSONVILLE	DUVAL	Northeast	City	2005-942-A	9/13/2005		95.00
BF540501000	Bill Ding Avenue Brownfield Area	PALATKA	PUTNAM	Northeast	County	2006-157	9/13/2005		9.00
BF290503000	1010-1026 North 19th Street	TAMPA	HILLSBOROUGH	Southwest	City	2005-634	8/26/2005	8/18/2008	8.00
BF160504000	Southside Community Redevelopment Area	JACKSONVILLE	DUVAL	Northeast	City	2005-773-A	8/15/2005		1708.00
BF160503000	Kings Avenue Brownfield Area	JACKSONVILLE	DUVAL	Northeast	City	2005-772-A	8/15/2005		1.00
BF420502000	Southeast Brownfield Expansion Area	OCALA	MARION	Central	City	2005-90	8/9/2005	6/16/2008	27.66
BF170501000	929 Massachusetts Avenue Area	PENSACOLA	ESCAMBIA	Northwest	County	R2005-120	8/4/2005		8.02
BF610501000	10747 68th Terrace Area	LIVE OAK	SUWANNEE	Northeast	County	2005-66	8/2/2005		36.55
BF160502000	Insteel Wire Products Area	JACKSONVILLE	DUVAL	Northeast	City	2005-732-A	7/5/2005		16.00
BF010501000	University Corners Brownfield Area	GAINESVILLE	ALACHUA	Northeast	City	050130	6/27/2005		4.00
BF520501000	Community Waterfront Park Area	ST PETERSBURG	PINELLAS	Southwest	City	2005-05	3/22/2005		3.00
BF100501000	Greater Green Cove Springs Area	GREEN COVE SPRINGS	CLAY	Northeast	City	R-04-2009	3/1/2005	2/17/2009	5579.73
BF130503000	Dedicated Transportation	MIAMI	MIAMI-DADE	Southeast	County	R-248-05	3/1/2005		1.61
BF130502000	Miami EZ Expansion Area	MIAMI	MIAMI-DADE	Southeast	City	R-05-0117	2/24/2005		4809.66
BF130501000	Homestead CRA Area	HOMESTEAD	MIAMI-DADE	Southeast	City	R2005-02-27	2/22/2005		1188.00
BF290502000	4010 North Lois Avenue (former Borden property)	TAMPA	HILLSBOROUGH	Southwest	City	2005-185	2/10/2005		7.50
BF290501000	W.T. Edwards Facility	TAMPA	HILLSBOROUGH	Southwest	City	2005-184	2/10/2005		26.00

Area ID	Area Name	City	County	District	Designated by	Resolution #	Resolution Date	Amended Resolution Date	Acreage
BF420501000	West Ocala Expansion Area	OCALA	MARION	Central	City	2005-29	2/1/2005		1702.43
BF500501000	Lake Worth Closed Municipal Landfill	LAKE WORTH	PALM BEACH	Southeast	City	06-2005	2/1/2005		65.00
BF160501000	Cecil Field, I.I. Park & Phillips Hwy Corridor	JACKSONVILLE	DUVAL	Northeast	City	2011-383-A	1/25/2005	8/22/2011	2199.00
BF520403000	Alps Brownfield Area		PINELLAS	Southwest	County	04-247	12/21/2004		7.00
BF370401000	Former Bayliner Facility Area	TALLAHASSEE	LEON	Northwest	County	R04-69	12/14/2004		31.00
BF350401000	Eustis Downtown & East Town Brownfield Area	EUSTIS	LAKE	Central	City	04-73	11/18/2004		926.00
BF080401000	Enterprise Charlotte Airport Park		CHARLOTTE	South	County	2004-228	10/26/2004	11/8/2011	3286.82
BF480401000	DEEDS Orlando Expanded	ORLANDO	ORANGE	Central	City	101104	10/11/2004	1/11/2007	6535.54
BF500402000	W.P.B. Downtown Northwood/Pleasant City CR Expanded Area	WEST PALM BEACH	PALM BEACH	Southeast	City	311-04	7/19/2004		148.35
BF520402000	Sod Farm Site	ST PETERSBURG	PINELLAS	Southwest	City	2004-425	7/15/2004		122.00
BF130401000	Aguaclara Brownfield Area	MIAMI	MIAMI-DADE	Southeast	City	04-00635	6/24/2004	7/10/2019	2.00
BF060401000	Harbour Cove Brownfield Area	HALLANDALE BEACH	BROWARD	Southeast	City	2004-18	6/15/2004		6.35
BF500401000	Lake Worth CRA District	LAKE WORTH	PALM BEACH	Southeast	City	32-2004	6/1/2004		737.00
BF580401000	Marion Anderson Place Urbaculture Area	SARASOTA	SARASOTA	Southwest	City	04R-1739	5/6/2004		18.00
BF170401000	1123 West Scott Street	PENSACOLA	ESCAMBIA	Northwest	County	R2004-74	5/6/2004		1.00
BF240401000	Hamilton County EZ Area		HAMILTON	Northeast	County	2008-34	4/20/2004	12/16/2008	12807.00
BF580402000	Wireman Property, aka Sarasota Dreambuilders	SARASOTA	SARASOTA	Southwest	City	04R-1699	4/19/2004		2.00
BF640401000	Daytona Beach Area- Aero Park	DAYTONA BEACH	VOLUSIA	Central	City	04-141	4/7/2004	9/8/2008	1397.00
BF110401000	Immokalee Airport Area	IMMOKALEE	COLLIER	South	County	04-82	3/24/2004		211.43
BF520401000	Young-Rainey Star Center Area		PINELLAS	Southwest	County	04-26	3/9/2004		96.00
BF050401000	Cocoa Brownfield Area	COCOA	BREVARD	Central	City	2004-01	1/13/2004		1549.00
BF290401000	The Place at Channelside	TAMPA	HILLSBOROUGH	Southwest	City	2004-45	1/8/2004	8/18/2008	2.25
BF500303000	Westgate/Belvedere Homes CRA Area		PALM BEACH	Southeast	County	R-2003-2076	12/16/2003		1264.00
BF050301000	Kirby Industrial Park 1 Brownfield Area	PALM BAY	BREVARD	Central	City	2003-70	12/4/2003		36.00
BF500302000	W.P.B. Downtown Northwood/Pleasant City CRA Areas	WEST PALM BEACH	PALM BEACH	Southeast	County	483-03	11/24/2003	7/18/2008	118.00
BF170302000	3415 Barrancas Avenue BF Area	PENSACOLA	ESCAMBIA	Northwest	County	R2003-155	11/17/2003		1.00
BF360301000	Ft. Myers Wellfield Area	FORT MYERS	LEE	South	City	2003-52	11/17/2003		870.00
BF570301000	Santa Rosa Brownfield Redevelopment Area		SANTA ROSA	Northwest	County	2003-56	11/13/2003		655.00
BF130302000	City of Hialeah Brownfield Area	HIALEAH	MIAMI-DADE	Southeast	City	03-117	10/28/2003		2986.00
BF290303000	Centro Asturiano Place Brownfield Area	TAMPA	HILLSBOROUGH	Southwest	City	2003-1259	10/2/2003		7.00
BF290304000	12th Street Operations Yard	TAMPA	HILLSBOROUGH	Southwest	City	2003-1258	10/2/2003	11/3/2011	7.50
BF160301000	Cecil Brownfields Area	JACKSONVILLE	DUVAL	Northeast	City	2003-985-A	9/17/2003		8124.00
BF570302000	Milton Brownfield Redevelopment Area	MILTON	SANTA ROSA	Northwest	City	1060-03	9/9/2003		1078.00
BF580302000	Fruitville Brownfields Area		SARASOTA	South	County	2003-189	7/23/2003		122.00
BF060302000	MABB Dania Beach Brownfield Area	DANIA BEACH	BROWARD	Southeast	City	2003-138	5/28/2003		4.00
BF060301000	Dania Motocross Brownfield Area	DANIA BEACH	BROWARD	Southeast	City	2003-137	5/28/2003		12.00
BF130301000	Beacons Lake Brownfield Area		MIAMI-DADE	Southeast	County	R-559-03	5/20/2003	7/11/2008	568.40
BF500301000	Belle Glade Brownfield Area	BELLE GLADE	PALM BEACH	Southeast	City	2397	5/19/2003		1091.00
BF360302000	Dunbar Enterprise Zone Brownfield Area	FORT MYERS	LEE	South	City	2003-22	5/19/2003		2778.00

Area ID	Area Name	City	County	District	Designated by	Resolution #	Resolution Date	Amended Resolution Date	Acreage
BF620301000	Taylor County Brownfield Area	PERRY	TAYLOR	Northeast	County	2003-1	5/5/2003		20.00
BF290302000	Ameristeel Brownfield Area	TAMPA	HILLSBOROUGH	Southwest	City	2003-0493	4/24/2003		63.00
BF580301000	Former Workman Electronics Area	SARASOTA	SARASOTA	Southwest	County	2003-053	2/26/2003		9.00
BF290301000	Tampa Heights Brownfield Area	TAMPA	HILLSBOROUGH	Southwest	City	2003-0134	1/30/2003		10.00
BF170301000	MidTown BF Redevelopment Area	PENSACOLA	ESCAMBIA	Northwest	City	03-03	1/23/2003		370.00
BF170201000	Pensacola Mainstreet Area	PENSACOLA	ESCAMBIA	Northwest	City	50-02	12/19/2002		3.00
BF160205000	Sunbeam Hill Area	JACKSONVILLE	DUVAL	Northeast	City	2002-1116-A	12/16/2002		224.00
BF160204000	Advantus Transport Area	JACKSONVILLE	DUVAL	Northeast	City	2002-1207-E	12/12/2002		13.00
BF160203000	Raven Transport Holding Area	JACKSONVILLE	DUVAL	Northeast	City	2002-1132-E	12/5/2002		9.00
BF130201000	Biscayne Commons Area	NORTH MIAMI BEACH	MIAMI-DADE	Southeast	City	R2002-59	12/3/2002		12.53
BF480202000	DEEDS Orlando	ORLANDO	ORANGE	Central	City	030721B14	11/21/2002		21.00
BF290204000	North 56th Street Area		HILLSBOROUGH	Southwest	County	R02-238	11/7/2002		8.38
BF230201000	Port St. Joe Area	PORT ST JOE	GULF	Northwest	City	02-12	11/5/2002		168.00
BF410201000	Manatee Avenue West Area	BRADENTON	MANATEE	Southwest	City	02-40	10/4/2002		3.00
BF160202000	Phillips Highway	JACKSONVILLE	DUVAL	Northeast	City	2002-881-A	9/30/2002		43.00
BF060202000	Liberia / Oakwood Hills Area	HOLLYWOOD	BROWARD	Southeast	City	R-2002-340	9/18/2002		148.00
BF160201000	Riverplace Boulevard Area	JACKSONVILLE	DUVAL	Northeast	City	2002-744-A	9/5/2002		4.00
BF090201000	Wal-Mart Inverness	INVERNESS	CITRUS	Southwest	County	02-140	7/9/2002		40.00
BF300201000	Chipley Industrial Park Area	CHIPLEY	WASHINGTON	Northwest	City	2-14	5/14/2002		113.00
BF290203000	Washington Street Crossing Area	TAMPA	HILLSBOROUGH	Southwest	City	2002-0457	4/25/2002		1.00
BF480201000	Winter Garden Downtown CRA	WINTER GARDEN	ORANGE	Central	City	02-01	4/11/2002	7/14/2008	726.00
BF290202000	Wal-Mart Buckley-Shuler Area		HILLSBOROUGH	Southwest	County	R02-048	3/20/2002		40.00
BF060201000	US 441/SR 7 Corridor	LAUDERHILL	BROWARD	Southeast	City	02R-03-54	3/11/2002		504.00
BF500101000	Former Palm Beach Lakes Golf Course	WEST PALM BEACH	PALM BEACH	Southeast	City	286-01	6/25/2001		96.00
BF530101000	CSX Railyard - Lakeland	LAKELAND	POLK	Southwest	City	4110	4/20/2001		99.00
BF160101000	Southside Generating Station (SGS) Area	JACKSONVILLE	DUVAL	Northeast	City	2001-130-A	4/3/2001		37.00
BF170101000	Strategic Crossings Corporation	PENSACOLA	ESCAMBIA	Northwest	City	1-01	1/25/2001		2.00
BF290101000	Tampa Port Authority	TAMPA	HILLSBOROUGH	Southwest	City	2001-0034	1/4/2001		600.00
BF420101000	Ocala Area #7 (817 North Pine Avenue)	OCALA	MARION	Central	City	2001-29	1/2/2001		1.25
BF060003000	Uniweld Products Area	DANIA BEACH	BROWARD	Southeast	City	200-203	12/12/2000		9.14
BF050001000	Village Green Area	ROCKLEDGE	BREVARD	Central	City	2000-465	12/6/2000		10.00
BF290002000	WRB at Old Hopewell Road	TAMPA	HILLSBOROUGH	Southwest	County	00-249	12/6/2000		9.00
BF420002000	Ocala Area #6 (Silver Springs Blvd)	OCALA	MARION	Central	City	2001-11	10/24/2000		1.00
BF130001000	Potamkin Properties	MIAMI BEACH	MIAMI-DADE	Southeast	City	2000-23963	6/7/2000	7/11/2008	2.85
BF160001000	Pilot Project Area	JACKSONVILLE	DUVAL	Northeast	City	2007-13-A	3/24/2000		11520.00
BF370001000	Cascade Park MGP and Landfill	TALLAHASSEE	LEON	Northwest	City	00-R-0004	3/22/2000		23.00
BF370002000	Gaines Street Corridor	TALLAHASSEE	LEON	Northwest	City	00-R-0006	3/22/2000		457.00
BF420001000	Ocala Area #5 (NW 1st Street)	OCALA	MARION	Central	City	200-53	2/15/2000		1.00
BF060002000	Lauderdale Lakes Area	LAUDERDALE LAKES	BROWARD	Southeast	City	00-019	1/25/2000		31.22

Area ID	Area Name	City	County	District	Designated by	Resolution #	Resolution Date	Amended Resolution Date	Acreage
BF010001000	Gainesville Area	GAINESVILLE	ALACHUA	Northeast	City	990974	1/24/2000		29.34
BF290001000	Robbins Manufacturing Storage Yard	TAMPA	HILLSBOROUGH	Southwest	County	R00-008	1/19/2000		24.00
BF530001000	Auburndale Wal-Mart Area	AUBURNDALE	POLK	Southwest	City	02-21	1/17/2000		10.00
BF060001000	Miramar Area	MIRAMAR	BROWARD	Southeast	City	00-93	1/5/2000		9.53
BF069901000	Pompano Beach Northwest Area	POMPANO BEACH	BROWARD	Southeast	City	2000-55	11/23/1999		2991.85
BF429904000	1001 North Magnolia Ave. Brownfield Area	OCALA	MARION	Central	City	2000-22	11/9/1999		0.29
BF429903000	Ocala Area #4 (NE 14th Street)	OCALA	MARION	Central	City	2000-23	11/9/1999		6.00
BF529901000	St. Petersburg Area	ST PETERSBURG	PINELLAS	Southwest	City	2008-584	10/21/1999	11/25/2008	122.00
BF179901000	Palafox Corridor Redevelopment Area	PENSACOLA	ESCAMBIA	Northwest	County	99-166	9/16/1999		598.00
BF139911000	Perrine Area		MIAMI-DADE	Southeast	County	R-286-99	7/13/1999	7/11/2008	2689.57
BF139906000	Sweetwater A Area		MIAMI-DADE	Southeast	County	R-286-99	7/13/1999	7/11/2008	68.57
BF139903000	Dade-Opa-Locka Area		MIAMI-DADE	Southeast	County	R-286-99	7/13/1999	7/11/2008	2688.11
BF139904000	Model City/Brownsville Area		MIAMI-DADE	Southeast	County	R-286-99	7/13/1999	7/11/2008	9708.02
BF139905000	Central Miami Area		MIAMI-DADE	Southeast	County	R-286-99	7/13/1999	7/11/2008	4111.32
BF139902000	Carol City Area	CAROL CITY	MIAMI-DADE	Southeast	County	R-286-99	7/13/1999	12/12/2018	3996.49
BF139908000	Sweetwater C Area		MIAMI-DADE	Southeast	County	R-286-99	7/13/1999	7/11/2008	782.60
BF139910000	Richmond Heights Area		MIAMI-DADE	Southeast	County	R-286-99	7/13/1999	7/11/2008	642.00
BF139912000	South Dade Area		MIAMI-DADE	Southeast	County	R-286-99	7/13/1999	7/11/2008	5055.48
BF139913000	Redlands/Leisure City Area		MIAMI-DADE	Southeast	County	R-286-99	7/13/1999	7/11/2008	2140.27
BF139909000	South Miami Area		MIAMI-DADE	Southeast	County	R-286-99	7/13/1999	7/11/2008	20.03
BF429902000	Ocala Area #3 (NW 10th Street)	OCALA	MARION	Central	City	99-94	6/8/1999		3.40
BF489901000	Orlando-Sunterra Area	ORLANDO	ORANGE	Central	City	31905-1	5/24/1999		14.00
BF429901000	Ocala Area #2 (N Magnolia Ave)	OCALA	MARION	Central	City	99-81	5/11/1999		5.12
BF209901000	Quincy Area	QUINCY	GADSDEN	Northwest	City	1025	4/27/1999		4890.00
BF369901000	Ft Myers Coal Gasification Area	FORT MYERS	LEE	South	City	99-17	4/19/1999		7.00
BF139901000	Opa-Locka Area	OPA-LOCKA	MIAMI-DADE	Southeast	City	99-6013	2/24/1999		1424.34
BF429801000	Ocala Area #1	OCALA	MARION	Central	City	98-39	3/24/1998		329.00
BF139801000	Miami Area	MIAMI	MIAMI-DADE	Southeast	City	99-197	3/10/1998		5018.15
BF529701000	Clearwater Area	CLEARWATER	PINELLAS	Southwest	City	02-15	10/16/1997		2071.06

**APPENDIX B**  
**Sites with Executed Brownfield Site Rehabilitation Agreements**

**Sites with Executed BSRA's**  
Florida Brownfields Redevelopment Program

7/1/2025



Total BSRA's: 532

Area ID	Site ID	ERIC ID	Site Name	City	County	District	BSRA Date	SRCO Date	Closure	Acreage
BF132501000	BF132501001	ERIC_18841	Ludlam Trail Phase II Green Reuse Site	MIAMI	MIAMI-DADE	Southeast	5/30/2025			5.6
BF502501000	BF502501001	ERIC_10930	Former Cypress Creek Golf Course Green Reuse Site	BOYNTON BEACH	PALM BEACH	Southeast	5/5/2025			122.53
BF432501000	BF432501001	ERIC_11407	9670 SW Marine Way Green Reuse Site	STUART	MARTIN	Southeast	4/15/2025			7.75
BF139801000	BF139801027	ERIC_18728	Overtown Utility Green Reuse Site	FLORIDA CITY	MIAMI-DADE	Southeast	12/30/2024			4.17
BF062403000	BF062403001	ERIC_18757	Heron Bay Green Reuse Site	PARKLAND	BROWARD	Southeast	12/27/2024			20.6
BF062402000	BF062402001	ERIC_18755	Pantry Lofts Green Reuse Site	FORT LAUDERDALE	BROWARD	Southeast	12/27/2024			0.73
BF062401000	BF062401001	ERIC_18756	Yashasim Green Reuse Site	HOLLYWOOD	BROWARD	Southeast	12/27/2024			4.8
BF139913000	BF139913004	ERIC_18731	HTG Naranja Green Reuse Site	NARANJA	MIAMI-DADE	Southeast	12/27/2024			5.1
BF292402000	BF292402001	ERIC_18732	East Ybor Development Site	TAMPA	HILLSBOROUGH	Southwest	12/26/2024			0.5
BF132405000	BF132405001	ERIC_18760	2400 W Okeechobee Green Reuse Site	HIALEAH	MIAMI-DADE	Southeast	12/24/2024			2.04
BF139801000	BF139801025	ERIC_18642	Courtside Apartments Phase II Green Reuse Site	MIAMI	MIAMI-DADE	Southeast	12/20/2024			5.29
BF130502000	BF130502003	ERIC_18759	Bindi Investments Green Reuse Site	MIAMI	MIAMI-DADE	Southeast	12/19/2024			3.01
BF132402000	BF132402001	ERIC_18758	Lithia Motors Green Reuse Site	DORAL	MIAMI-DADE	Southeast	12/19/2024			8.32
BF132404000	BF132404001	ERIC_18754	Claude Pepper Park Green Reuse Site	NORTH MIAMI	MIAMI-DADE	Southeast	12/16/2024			11.14
BF132403000	BF132403001	ERIC_18184	WGC 97th Street Green Reuse Site	HIALEAH	MIAMI-DADE	Southeast	12/16/2024			8.86
BF139912000	BF139912012	ERIC_18753	Princeton Gardens Brownfield Site	MIAMI	MIAMI-DADE	Southeast	12/16/2024			9.07
BF139912000	BF139912011	ERIC_18752	Princeton Landings Brownfield Site	MIAMI	MIAMI-DADE	Southeast	12/16/2024			10.36
BF139801000	BF139801026	ERIC_18675	Jackson Memorial Hospital Site	MIAMI	MIAMI-DADE	Southeast	12/16/2024			38.87
BF171902000	BF171902001	ERIC_18636	Southern Recycling Green Reuse Site	PENSACOLA	ESCAMBIA	Northwest	12/11/2024			5.32
BF532402000	BF532402001	ERIC_18681	Downtown Redevelopment Brownfield Site	HAINES CITY	POLK	Southwest	12/11/2024			0.26
BF641006000	BF641006001	ERIC_18635	Mango Tree Drive Brownfield Site	EDGEWATER	VOLUSIA	Central	12/10/2024			30.62
BF162401000	BF162401002	ERIC_14462	Salisbury Road Green Reuse Site	JACKSONVILLE	DUVAL	Northeast	12/9/2024			71.21
BF162401000	BF162401001	ERIC_18553	Belfort Creek Green Reuse Site	JACKSONVILLE	DUVAL	Northeast	12/9/2024			33.06
BF529901000	BF529901009	ERIC_17795	Commerce Park - Deuces Rising	SAINT PETERSBURG	PINELLAS	Southwest	12/6/2024			2.58
BF552401000	BF552401001	ERIC_18676	SJC Flex Warehouse	ST. AUGUSTINE	ST. JOHNS	Northeast	12/5/2024			40.41
BF500401000	BF500401001	ERIC_18661	Madison Terrace Brownfield Site	LAKE WORTH	PALM BEACH	Southeast	11/25/2024	5/29/2025	U	1.62
BF641004000	BF641004010	ERIC_18637	141 Bay Street Brownfield Site	DAYTONA BEACH	VOLUSIA	Central	11/25/2024			6.48
BF372301000	BF372301001	ERIC_18673	Lake Bradford Apartments	TALLAHASSEE	LEON	Northwest	11/25/2024			4.51
BF532401000	BF532401001	ERIC_18555	Lakeland Industrial Crossings Green Reuse Site	LAKELAND	POLK	Southwest	11/4/2024			22.57
BF162303000	BF162303001	ERIC_18653	Kings Ave. Brownfield Site	JACKSONVILLE	DUVAL	Northeast	10/21/2024			1.27
BF160001000	BF160001032	ERIC_18652	Kaye Properties Brownfield Site	JACKSONVILLE	DUVAL	Northeast	10/21/2024			4.28
BF160001000	BF160001031	ERIC_14514	Matrix Machine	JACKSONVILLE	DUVAL	Northeast	10/21/2024			-
BF291204000	BF291204001	ERIC_18586	Rome Yard	TAMPA	HILLSBOROUGH	Southwest	7/16/2024	6/3/2025	U	11.97
BF641004000	BF641004009	ERIC_18526	Former Police Department	DAYTONA BEACH	VOLUSIA	Central	5/28/2024			1.9

\* PRFBRS chose to voluntarily terminate BSRA

\*\* Please note, BSRA BF00101004 superseded by BF500101005 and BF00101006

^ BSRA revoked for failure to comply.

^^ Property ownership change. BSRA terminated.

~ SRCO withdrawn

Area ID	Site ID	ERIC ID	Site Name	City	County	District	BSRA Date	SRCO Date	Closure	Acreage
BF130502000	BF130502002	ERIC_18138	Pelican Harbor Green Reuse Site	MIAMI	MIAMI-DADE	Southeast	5/1/2024			8.32
BF139901000	BF139901006	ERIC_18509	Albert Express, Inc. (Former E&C Service Station)	OPA-LOCKA	MIAMI-DADE	Southeast	12/29/2023			2.64
BF139904000	BF139904007	ERIC_18504	KIPP South Florida Green Reuse Site	MIAMI	MIAMI-DADE	Southeast	12/27/2023			5.13
BF139911000	BF139911005	ERIC_18454	Quail Roost Transit Village I	CUTLER BAY	MIAMI-DADE	Southeast	12/27/2023			2.24
BF132303000	BF132303001	ERIC_18508	Beacon Lakes Logistics Park	MIAMI	MIAMI-DADE	Southeast	12/26/2023			37.47
BF132302000	BF132302001	ERIC_18507	Coconut Palm Truck Parking	PRINCETON	MIAMI-DADE	Southeast	12/26/2023			61.2
BF139902000	BF139902003	ERIC_18505	Derby Pointe Logistics Center West	MIAMI GARDENS	MIAMI-DADE	Southeast	12/26/2023			68.49
BF139902000	BF139902002	ERIC_18506	Derby Pointe Logistics Center East	MIAMI GARDENS	MIAMI-DADE	Southeast	12/26/2023			47.21
BF132304000	BF132304001	ERIC_18503	Westland Gardens Green Reuse Site	HIALEAH	MIAMI-DADE	Southeast	12/26/2023			7.48
BF580401000	BF580401001	ERIC_10007	Newtown Gateway Healthcare Parcel	SARASOTA	SARASOTA	South	12/22/2023			4.74
BF502302000	BF502302001	ERIC_10897	Verde Commons Green Reuse Site	BOCA RATON	PALM BEACH	Southeast	12/19/2023			17.53
BF292302000	BF292302001	ERIC_13945	Tampa Bay Metals Site	TAMPA	HILLSBOROUGH	Southwest	12/14/2023			3.11
BF292301000	BF292301001	ERIC_18477	Gasworx E123 Brownfield Site	TAMPA	HILLSBOROUGH	Southwest	12/14/2023			5.13
BF370002000	BF370002010	ERIC_18395	Homewood Suites (Former Cash and Carry)	TALLAHASSEE	LEON	Northwest	12/12/2023			1.21
BF139912000	BF139912010	ERIC_18493	Southpointe Vista Green Reuse Site	MIAMI	MIAMI-DADE	Southeast	12/6/2023			3.62
BF139801000	BF139801024	ERIC_18492	Wynwood Apartments Green Reuse Site	MIAMI	MIAMI-DADE	Southeast	12/6/2023			0.65
BF360302000	BF360302002	ERIC_18322	LEO @ Edison Place Redevelopment Site	FORT MYERS	LEE	Southwest	12/6/2023			40.26
BF382301000	BF382301001	ERIC_18466	BW Noble Green Reuse Site	WILLISTON	LEVY	Northeast	12/5/2023			2.98
BF162302000	BF162302001	ERIC_18443	7893 Hogan Settelement Road Brownfield Site	JACKSONVILLE	DUVAL	Northeast	12/5/2023	6/17/2024	U	15.41
BF162301000	BF162301001	ERIC_18449	5079 W Beaver Street	JACKSONVILLE	DUVAL	Northeast	12/5/2023			1.69
BF552301000	BF552301001	ERIC_18462	West Augustine Gateway Site	ST AUGUSTINE	ST. JOHNS	Northeast	12/5/2023			5.68
BF292202000	BF292202001	ERIC_18248	Main Street Park	TAMPA	HILLSBOROUGH	Southwest	11/30/2023			0.23
BF531301000	BF531301002	ERIC_18461	Former Growers Fertilizer Brownfield Site	LAKE ALFRED	POLK	Southwest	11/27/2023			7.7
BF130401000	BF130401001	ERIC_14201	1960 NW 27th Ave Green Reuse Site	MIAMI	MIAMI-DADE	Southeast	11/8/2023			2.07
BF139901000	BF139901005	ERIC_18471	Ironwood Commerce Center South	OPA-LOCKA	MIAMI-DADE	Southeast	11/8/2023			33.76
BF139901000	BF139901004	ERIC_18472	Ironwood Commerce Center North	OPA-LOCKA	MIAMI-DADE	Southeast	11/8/2023			9.26
BF502301000	BF502301001	ERIC_3826	Former Southern Crop Services Green Reuse Site	DELRAY BEACH	PALM BEACH	Southeast	11/1/2023			9.89
BF132301000	BF132301001	ERIC_18448	Parkview Coral Apartments Green Reuse Site	MIAMI	MIAMI-DADE	Southeast	9/14/2023			0.8
BF062201000	BF062201001	ERIC_18276	El-Ad Gas Station Parcel Green Reuse Site	DAVIE	BROWARD	Southeast	12/29/2022			0.94
BF532202000	BF532202001	ERIC_13343	Former Polk County Fertilizer Plant Brownfield Site	HAINES CITY	POLK	Southwest	12/28/2022			4.89
BF292203000	BF292203001	ERIC_17846	Coral Walk Brownfield Site	TAMPA	HILLSBOROUGH	Southwest	12/27/2022			3.72
BF502202000	BF502202001	ERIC_18020	Encompass Health Green Reuse Site	GREENACRES	PALM BEACH	Southwest	12/27/2022			8.22
BF529701000	BF529701008	ERIC_5554	812 Park Street Brownfield Site (Bob Lee's)	CLEARWATER	PINELLAS	Southwest	12/27/2022	6/4/2025	U	0.61
BF132204000	BF132204001	ERIC_18275	The Line Green Reuse Site	MIAMI	MIAMI-DADE	Southeast	12/23/2022			1.48
BF132207000	BF132207001	ERIC_18271	Water Park Villas Green Reuse Site	MIAMI	MIAMI-DADE	Southeast	12/22/2022			4.15
BF139911000	BF139911004	ERIC_18274	Tucker Tower Green Reuse Site	MIAMI	MIAMI-DADE	Southeast	12/22/2022			1.87

\* PRFBRS chose to voluntarily terminate BSRA

\*\* Please note, BSRA BF00101004 superseded by BF500101005 and BF00101006

^ BSRA revoked for failure to comply.

^^ Property ownership change. BSRA terminated.

~ SRCO withdrawn

7/1/2025

Area ID	Site ID	ERIC ID	Site Name	City	County	District	BSRA Date	SRCO Date	Closure	Acreage
BF521202000	BF521202003	ERIC_18240	8475 Ulmerton Brownfield Site	LARGO	PINELLAS	Southwest	12/20/2022			9.27
BF482201000	BF482201001	ERIC_18189	Scotty's Extermination Company (Former) Brownfield Site	ORLANDO	ORANGE	Central	12/19/2022			0.67
BF132202000	BF132202001	ERIC_18268	19640 Green Reuse Site	MIAMI	MIAMI-DADE	Southeast	12/19/2022			2.3
BF132203000	BF132203001	ERIC_18269	Bellamonte at Golden Glades Green Reuse Site	MIAMI	MIAMI-DADE	Southeast	12/19/2022			7.05
BF130830000	BF130830001	ERIC_18270	Card Sound Key Green Reuse Site	FLORIDA CITY	MIAMI-DADE	Southeast	12/19/2022			13.54
BF529901000	BF529901008	ERIC_9904	Former Barracuda LLC Brownfield Site	SAINT PETERSBURG	PINELLAS	Southwest	12/16/2022			0.39
BF160504000	BF160504003	ERIC_14587	Artea Redevelopment aka Former JTA Montana Ave. Property	JACKSONVILLE	DUVAL	Northeast	12/2/2022			3.79
BF160001000	BF160001028	ERIC_14605	Florida Publishing Brownfield Site	JACKSONVILLE	DUVAL	Northeast	12/2/2022			4.66
BF162201000	BF162201001	ERIC_18173	CLH-Jacksonville College Street	JACKSONVILLE	DUVAL	Northeast	12/2/2022			3.17
BF160001000	BF160001030	ERIC_18219	Dora Street Site	JACKSONVILLE	DUVAL	Northeast	12/2/2022			0.96
BF160001000	BF160001027	ERIC_18245	Florida TU Brownfield Site	JACKSONVILLE	DUVAL	Northeast	12/2/2022			4.14
BF160504000	BF160504004	ERIC_18246	Riverplace Brownfield Site	JACKSONVILLE	DUVAL	Northeast	12/2/2022			8.2
BF160001000	BF160001029	ERIC_18247	2402 Market Street Project	JACKSONVILLE	DUVAL	Northeast	12/2/2022			0.72
BF131701000	BF131701002	ERIC_18244	Doral 87 Brownfield Site	DORAL	MIAMI-DADE	Southeast	11/30/2022			5.16
BF641004000	BF641004008	ERIC_18224	218 W. ISB Brownfield Site	DAYTONA BEACH	VOLUSIA	Central	11/29/2022			6.1
BF502201000	BF502201001	ERIC_18181	Site 1 - Okeechobee Blvd Former Unpermitted LF and Shooting Range	WEST PALM BEACH	PALM BEACH	Southeast	10/31/2022			19.8
BF502201000	BF502201002	ERIC_8734	Site 2 - Okeechobee Blvd Discharges from Permitted LF	WEST PALM BEACH	PALM BEACH	Southeast	10/31/2022			8.28
BF060801000	BF060801004	ERIC_18215	Saratoga Crossings III Green Reuse Site	DANIA BEACH	BROWARD	Southeast	10/13/2022			2.1
BF531201000	BF531201001	ERIC_18155	Barnetts #706	FORT MEADE	POLK	Southwest	10/3/2022			1.54
BF531001000	BF531001001	ERIC_13345	Former Vigoro Industries, Inc.	WINTER HAVEN	POLK	Southwest	8/31/2022			19.35
BF132201000	BF132201001	ERIC_18149	NoMi Square Brownfield Site	NORTH MIAMI	MIAMI-DADE	Southeast	7/21/2022			7.52
BF139902000	BF139902001	ERIC_14360	Miami-Dade County ISD Lot	MIAMI GARDENS	MIAMI-DADE	Southeast	7/1/2022			4.92
BF531703000	BF531703002	ERIC_17987	Lake Wire Multifamily Brownfield Site	LAKELAND	POLK	Southwest	5/31/2022	2/23/2023	U	22.1
BF422102000	BF422102001	ERIC_11090	Pine Oaks Golf Course	OCALA	MARION	Central	12/29/2021			200.04
BF422101000	BF422101001	ERIC_17805	McCall Ocala Service Facility	OCALA	MARION	Central	12/29/2021			0.64
BF291905000	BF291905001	ERIC_14042	SM-Ruskin Redevelopment Site	RUSKIN	HILLSBOROUGH	Southwest	12/28/2021			19.76
BF139801000	BF139801023	ERIC_17963	Sawyer's Landing Mixed Use Project	MIAMI	MIAMI-DADE	Southeast	12/28/2021	8/8/2023	U	3.37
BF592101000	BF592101001	ERIC_17970	1980 Cameron Ave. Brownfield Site	SANFORD	SEMINOLE	Central	12/28/2021			15.22
BF050802000	BF050802002	ERIC_17971	Former S&S Petroleum	MELBOURNE	BREVARD	Central	12/28/2021			0.35
BF292103000	BF292103001	ERIC_17842	Independence Park Redevelopment Site	TAMPA	HILLSBOROUGH	Southwest	12/23/2021			43.81
BF292102000	BF292102001	ERIC_17792	Former Chicken Farm Site	TAMPA	HILLSBOROUGH	Southwest	12/22/2021	1/2/2024	C	7.03
BF580302000	BF580302003	ERIC_9986	Tamarac McNab Self Storage, LLC	SARASOTA	SARASOTA	South	12/22/2021			48.94
BF131701000	BF131701001	ERIC_17957	7777 NW 41st Street Green Reuse Site	DORAL	MIAMI-DADE	Southeast	12/21/2021	3/7/2023	U	22.9
BF139801000	BF139801022	ERIC_17958	Diamedix Project	MIAMI	MIAMI-DADE	Southeast	12/21/2021	1/10/2023	U	2.05
BF132103000	BF132103001	ERIC_17959	South Riviera Brownfield Site	MIAMI	MIAMI-DADE	Southeast	12/21/2021			4.61
BF139912000	BF139912008	ERIC_17960	Windmill Farms Green Reuse Site	PRINCETON	MIAMI-DADE	Southeast	12/21/2021			9.82

\* PRFBRS chose to voluntarily terminate BSRA

\*\* Please note, BSRA BF00101004 superseded by BF500101005 and BF00101006

^ BSRA revoked for failure to comply.

^^ Property ownership change. BSRA terminated.

~ SRCO withdrawn

7/1/2025

Area ID	Site ID	ERIC ID	Site Name	City	County	District	BSRA Date	SRCO Date	Closure	Acreage
BF132001000	BF132001002	ERIC_17953	Cordial Holdings Green Reuse Site	FLORIDA CITY	MIAMI-DADE	Southeast	12/20/2021			17.47
BF139913000	BF139913002	ERIC_17954	AHS at Biscayne Village		MIAMI-DADE	Southeast	12/20/2021	7/19/2022	U	8.84
BF132104000	BF132104001	ERIC_17955	TV ML Industrial Project	MIAMI LAKES	MIAMI-DADE	Southeast	12/20/2021			15.68
BF139912000	BF139912007	ERIC_17956	Village at Old Cutler	MIAMI	MIAMI-DADE	Southeast	12/20/2021	7/6/2023	U	17.25
BF062101000	BF062101001	ERIC_4131	El-Ad Broward Plaza Green Reuse Site	DAVIE	BROWARD	Southeast	12/20/2021			8.18
BF412101000	BF412101001	ERIC_15345	Carr Landing	BRADENTON	MANATEE	Southwest	12/14/2021			6.68
BF522103000	BF522103001	ERIC_17775	Former Carroll's Nursery	LARGO	PINELLAS	Southwest	12/7/2021			8.27
BF411201000	BF411201007	ERIC_17840	Former Heartland Fertilizer Site	PALMETTO	MANATEE	Southwest	12/3/2021			8.28
BF160001000	BF160001026	ERIC_6839	2245 N. Main Street Project	JACKSONVILLE	DUVAL	Northeast	12/2/2021			0.84
BF292101000	BF292101001	ERIC_17841	Interbay Redevelopment Site	TAMPA	HILLSBOROUGH	Southwest	11/8/2021			26.07
BF132101000	BF132101001	ERIC_17854	CBTS Green Reuse Site	BAY HARBOR ISLANDS	MIAMI-DADE	Southeast	10/21/2021			1.42
BF132102000	BF132102001	ERIC_17852	Brickell Fire Station Green Reuse Site	MIAMI	MIAMI-DADE	Southeast	9/7/2021			1.42
BF642101000	BF642101001	ERIC_9512	Former Brunswick Brownfield Site	DELAND	VOLUSIA	Central	8/11/2021			47.63
BF522101000	BF522101001	ERIC_7615	Former Baypointe Golf Course Brownfield Site	SEMINOLE	PINELLAS	Southwest	8/3/2021			42.85
BF502001000	BF502001002	ERIC_15386	Compensatory Floodplain Site	SOUTH BAY	PALM BEACH	Southeast	6/24/2021			0.33
BF502001000	BF502001001	ERIC_15385	Tanner Park	SOUTH BAY	PALM BEACH	Southeast	6/21/2021			2.53
BF291901000	BF291901001	ERIC_17229	Former Hoover Landfill Brownfield Site	TAMPA	HILLSBOROUGH	Southwest	5/10/2021			19.21
BF529701000	BF529701007	ERIC_9884	1425-1429 South Harrison Redevelopment Site	CLEARWATER	PINELLAS	Southwest	4/21/2021			0.28
BF290801000	BF290801001	ERIC_15372	Lakeside Logistics I	PLANT CITY	HILLSBOROUGH	Southwest	1/21/2021	6/21/2021	C	67.52
BF139801000	BF139801020	ERIC_14271	Miami Parcel West Green Reuse Site	MIAMI	MIAMI-DADE	Southeast	12/29/2020			2.19
BF642001000	BF642001001	ERIC_15328	Beresford Springs Redevelopment Brownfield Site	DELAND	VOLUSIA	Central	12/29/2020			158.19
BF132002000	BF132002001	ERIC_17855	Shoppes at Cutler Bay Green Reuse Site	CUTLER BAY	MIAMI-DADE	Southeast	12/29/2020			13.12
BF139801000	BF139801021	ERIC_17856	Miami Parcel East Green Reuse Site	MIAMI	MIAMI-DADE	Southeast	12/29/2020			1.76
BF132003000	BF132003001	ERIC_17857	Miline at Ludlam Trail Green Reuse Site	MIAMI	MIAMI-DADE	Southeast	12/29/2020			3.99
BF139904000	BF139904006	ERIC_17858	Northside Commons Brownfield Site	MIAMI	MIAMI-DADE	Southeast	12/29/2020	8/30/2024	C	0.95
BF500901000	BF500901001	ERIC_15315	Umdasch Real Estate GRS aka Former Boutwell Road Trash Dump	LAKE WORTH	PALM BEACH	Southeast	12/28/2020			9.79
BF412001000	BF412001001	ERIC_11601	Jackson Crossings Phase II Green Reuse Site	PALMETTO	MANATEE	Southwest	12/23/2020			31.78
BF292003000	BF292003001	ERIC_15369	Channel Club II	TAMPA	HILLSBOROUGH	Southwest	12/22/2020			2.1
BF592001000	BF592001001	ERIC_8875	Village Grande Brownfield Site	ALTAMONTE SPRINGS	SEMINOLE	Central	12/22/2020			4.31
BF582001000	BF582001001	ERIC_10096	Sabal Trace Redevelopment Site	NORTH PORT	SARASOTA	South	12/21/2020			206.99
BF491101000	BF491101003	ERIC_12941	Weston 4 Hundred, LLC	KISSIMMEE	OSCEOLA	Central	12/17/2020			10.11
BF591001000	BF591001003	ERIC_15337	Former Oviedo Discount Beverage	OVIDEO	SEMINOLE	Central	12/17/2020	9/21/2021	U	0.41
BF062003000	BF062003001	ERIC_17952	5000 Davie Green Reuse Site	DAVIE	BROWARD	Southeast	12/17/2020			3.83
BF582002000	BF582002001	ERIC_10070	Gracewater at SRQ Green Redevelopment Site	SARASOTA	SARASOTA	South	12/16/2020	1/18/2024	C	138.74
BF292002000	BF292002001	ERIC_15371	Colonnade Crosstown, LLC Brownfield Site	TAMPA	HILLSBOROUGH	Southwest	12/16/2020			156.38
BF641004000	BF641004007	ERIC_15330	833 ISB Site	DAYTONA BEACH	VOLUSIA	Central	12/10/2020			2.85

\* PRFBRS chose to voluntarily terminate BSRA

\*\* Please note, BSRA BF00101004 superseded by BF500101005 and BF00101006

^ BSRA revoked for failure to comply.

^^ Property ownership change. BSRA terminated.

~ SRCO withdrawn

7/1/2025

Area ID	Site ID	ERIC ID	Site Name	City	County	District	BSRA Date	SRCO Date	Closure	Acreage
BF641004000	BF641004006	ERIC_15331	934 W. International Speedway Site	DAYTONA BEACH	VOLUSIA	Central	12/10/2020			0.51
BF052001000	BF052001001	ERIC_15336	Heritage Park at Crane Creek Green Reuse Site	MELBOURNE	BREVARD	Central	12/10/2020			15.08
BF552001000	BF552001001	ERIC_15313	West San Sebastian Brownfield Site	ST AUGUSTINE	ST. JOHNS	Northeast	11/24/2020			133.91
BF160001000	BF160001025	ERIC_3869	Former American Celcure	JACKSONVILLE	DUVAL	Northeast	11/23/2020			3.4
BF139911000	BF139911003	ERIC_17951	Cutler Bay Town Centre Brownfield Site	MIAMI	MIAMI-DADE	Southeast	11/16/2020			1.26
BF160001000	BF160001024	ERIC_15312	Union Terminal Brownfield Site	JACKSONVILLE	DUVAL	Northeast	11/12/2020			8.23
BF291904000	BF291904001	ERIC_13845	Former Hartford Street Terminal	TAMPA	HILLSBOROUGH	Southwest	10/30/2020			70
BF292001000	BF292001001	ERIC_15370	5003 Dover Street Brownfield Site	TAMPA	HILLSBOROUGH	Southwest	10/22/2020			11.47
BF139912000	BF139912006	ERIC_17950	Cannery Row Green Reuse Site	PRINCETON	MIAMI-DADE	Southeast	7/22/2020	2/26/2021	U	2.78
BF061904000	BF061904001	ERIC_17949	Poinciana Crossing Green Reuse Site	FORT LAUDERDALE	BROWARD	Southeast	7/7/2020	3/2/2023	C	2.31
BF132001000	BF132001001	ERIC_17948	Solimar Apartments Green Reuse Site	FLORIDA CITY	MIAMI-DADE	Southeast	7/2/2020			10.25
BF160001000	BF160001023	ERIC_17853	Riverside Lot 3 (FIS Headquarters)	JACKSONVILLE	DUVAL	Northeast	6/11/2020	7/24/2020	U	4.5
BF480401000	BF480401012	ERIC_12890	315 State Lane Proposed Apartment Building	ORLANDO	ORANGE	Central	3/11/2020	3/24/2022	U	2.08
BF411201000	BF411201006	ERIC_7531	Reef at Riviera Brownfield Site	PALMETTO	MANATEE	Southwest	12/30/2019			6.28
BF061906000	BF061906001	ERIC_10115	2700 Gateway Green Reuse Site	POMPANO BEACH	BROWARD	Southeast	12/27/2019	10/6/2023	C	4.37
BF501901000	BF501901001	ERIC_10928	Residences at Boca Dunes Green Reuse Site	BOCA RATON	PALM BEACH	Southeast	12/27/2019			55.84
BF061907000	BF061907001	ERIC_17944	Public Works Campus Green Reuse Site	OAKLAND PARK	BROWARD	Southeast	12/27/2019			9.18
BF061905000	BF061905001	ERIC_17945	Gulfstream Point Green Reuse Site	HALLANDALE BEACH	BROWARD	Southeast	12/27/2019			0.89
BF060801000	BF060801003	ERIC_17946	Saratoga Crossings II Green Reuse Site	DANIA BEACH	BROWARD	Southeast	12/27/2019	4/13/2022	C	2.13
BF060801000	BF060801002	ERIC_17947	Saratoga Crossings I Green Reuse Site	DANIA BEACH	BROWARD	Southeast	12/27/2019	2/22/2022	C	2.57
BF061902000	BF061902001	ERIC_17943	Pinnacle at Peacefield Brownfield Site	HOLLYWOOD	BROWARD	Southeast	12/26/2019	8/27/2020	U	5.53
BF139912000	BF139912005	ERIC_17937	Modern Towers Green Reuse Site		MIAMI-DADE	Southeast	12/24/2019			11
BF139912000	BF139912004	ERIC_17940	Paradise Gardens Green Reuse Site		MIAMI-DADE	Southeast	12/24/2019			9.89
BF139911000	BF139911002	ERIC_17941	Grouper Park Green Reuse Site		MIAMI-DADE	Southeast	12/24/2019			1.96
BF139801000	BF139801019	ERIC_17942	237-295 NW 20th Green Reuse Site	MIAMI	MIAMI-DADE	Southeast	12/24/2019			0.84
BF529901000	BF529901007	ERIC_7519	Central Ave. Redevelopment Site	ST PETERSBURG	PINELLAS	Southwest	12/23/2019	10/5/2022	C	1.77
BF480401000	BF480401011	ERIC_12869	John Young and Princeton ROCC	ORLANDO	ORANGE	Central	12/20/2019	11/4/2021	U	65.39
BF491101000	BF491101002	ERIC_12938	Former Hansel Plant Site	KISSIMMEE	OSCEOLA	Central	12/20/2019			8.45
BF531301000	BF531301001	ERIC_7518	Downtown Development Site	LAKE ALFRED	POLK	Southwest	12/20/2019	12/18/2020	U	0.65
BF590807000	BF590807002	ERIC_7528	Nation Oak Ave. Brownfield Site	SANFORD	SEMINOLE	Central	12/18/2019			1.17
BF139913000	BF139913001	ERIC_17935	Fair Oaks Green Reuse Site	HOMESTEAD	MIAMI-DADE	Southeast	12/16/2019	11/24/2020	U	3.43
BF139801000	BF139801018	ERIC_17936	297 NE 67th Street Redevelopment Site	MIAMI	MIAMI-DADE	Southeast	12/16/2019			0.95
BF160001000	BF160001022	ERIC_14722	Lot J Brownfield Site	JACKSONVILLE	DUVAL	Northeast	12/11/2019			10.16
BF160001000	BF160001021	ERIC_14705	Clark Pest Control	JACKSONVILLE	DUVAL	Northeast	12/10/2019			1.42
BF411201000	BF411201005	ERIC_7516	Former Growers Hardware Site	PALMETTO	MANATEE	Southwest	12/9/2019	5/5/2020	U	0.35
BF529901000	BF529901006	ERIC_7468	Tricera Nitneil Green Reuse Area	ST PETERSBURG	PINELLAS	Southwest	12/6/2019	7/14/2021	U	2.95

\* PRFBRS chose to voluntarily terminate BSRA

\*\* Please note, BSRA BF00101004 superseded by BF500101005 and BF00101006

^ BSRA revoked for failure to comply.

^^ Property ownership change. BSRA terminated.

~ SRCO withdrawn

7/1/2025

Area ID	Site ID	ERIC ID	Site Name	City	County	District	BSRA Date	SRCO Date	Closure	Acreage
BF411201000	BF411201004	ERIC_7517	Former Slicks Garage Site	PALMETTO	MANATEE	Southwest	12/6/2019			1.95
BF160001000	BF160001020	ERIC_14791	Block 48, Jacksonville Harts Area	JACKSONVILLE	DUVAL	Northeast	11/25/2019	2/25/2025	C	1.52
BF061804000	BF061804001	ERIC_17934	Atlantic Village Green Reuse Site	HALLANDALE BEACH	BROWARD	Southeast	11/18/2019			2.52
BF529901000	BF529901005	ERIC_7511	2221 5th Ave. South Green Reuse Area	ST PETERSBURG	PINELLAS	Southwest	11/14/2019			0.76
BF529901000	BF529901004	ERIC_7513	300 23rd Street South Green Reuse Area	ST PETERSBURG	PINELLAS	Southwest	11/14/2019	9/20/2021	U	1.75
BF291002000	BF291002005	ERIC_14035	Former Carlos Brake & Radiator, Inc.	PLANT CITY	HILLSBOROUGH	Southwest	9/30/2019			0.34
BF551901000	BF551901001	ERIC_5408	Former Quality Cleaners	ST AUGUSTINE	ST. JOHNS	Northeast	9/11/2019			0.8
BF061801000	BF061801001	ERIC_17933	Former Bennet Auto Supply Reuse Site	OAKLAND PARK	BROWARD	Southeast	7/25/2019	5/20/2021	C	0.91
BF061901000	BF061901001	ERIC_17932	Sawgrass Storage Site	CORAL SPRINGS	BROWARD	Southeast	6/12/2019	12/19/2019	U	16.16
BF291803000	BF291803001	ERIC_14034	Former ICS East	TAMPA	HILLSBOROUGH	Southwest	5/31/2019			0.85
BF291803000	BF291803002	ERIC_17973	Former ICS West	TAMPA	HILLSBOROUGH	Southwest	5/31/2019			0.47
BF370002000	BF370002009	ERIC_11799	Myers Commercial Park & Design Center	TALLAHASSEE	LEON	Northwest	3/21/2019	7/12/2023	C	5.48
BF139801000	BF139801017	ERIC_17931	Wynwood Hotel Brownfield Site	MIAMI	MIAMI-DADE	Southeast	3/20/2019	5/4/2023	C	0.68
BF051801000	BF051801001	ERIC_12410	Former EZ Auto Sales	MERRITT ISLAND	BREVARD	Central	12/27/2018			0.98
BF061803000	BF061803001	ERIC_10327	Former Hillsboro Pines Golf Club Reuse Area	DEERFIELD BEACH	BROWARD	Southeast	12/21/2018	12/22/2021	C	82.99
BF370002000	BF370002008	ERIC_11793	Railroad Ave. and McDonnell Dr.	TALLAHASSEE	LEON	Northwest	12/20/2018	8/9/2019	U	1.5
BF139905000	BF139905001	ERIC_17925	Industrial Shipping Facility	MIAMI	MIAMI-DADE	Southeast	12/19/2018			2.67
BF139901000	BF139901003	ERIC_17926	Castle Opa Brownfield Site	OPA-LOCKA	MIAMI-DADE	Southeast	12/19/2018			7.41
BF139801000	BF139801016	ERIC_17927	Riverfront Brownfield Site	MIAMI	MIAMI-DADE	Southeast	12/19/2018			1.69
BF131805000	BF131805001	ERIC_17928	Collins Park Garage Site	MIAMI BEACH	MIAMI-DADE	Southeast	12/19/2018			1.47
BF131104000	BF131104003	ERIC_17929	Skilled Nursing Facility Brownfield Site	MIAMI	MIAMI-DADE	Southeast	12/19/2018			2.67
BF130843000	BF130843003	ERIC_17930	Dolphin Professional Centre Site	MIAMI	MIAMI-DADE	Southeast	12/19/2018			3.78
BF591001000	BF591001002	ERIC_11199	Oviedo Regional Stormwater Pond Redevelopment Site	OVIEDO	SEMINOLE	Central	12/18/2018	6/15/2021	U	6.73
BF291802000	BF291802001	ERIC_14028	Madison Street Park Brownfield Site	TAMPA	HILLSBOROUGH	Southwest	12/18/2018	3/3/2022	C	0.92
BF171802000	BF171802001	ERIC_12278	Former SPC Brownfield Site	PENSACOLA	ESCAMBIA	Northwest	12/11/2018			29.39
BF171802000	BF171802002	ERIC_12279	Former Nursery Brownfield Site	PENSACOLA	ESCAMBIA	Northwest	12/11/2018			6.44
BF011801000	BF011801001	ERIC_17972	BW University Green Reuse Area Brownfield Site	GAINESVILLE	ALACHUA	Northeast	12/11/2018	2/2/2021	U	1.65
BF160001000	BF160001019	ERIC_14816	Lofts at Jefferson Station	JACKSONVILLE	DUVAL	Northeast	12/7/2018	3/4/2021	C	1.77
BF160001000	BF160001018	ERIC_14817	Bishopgate Brownfield Site	JACKSONVILLE	DUVAL	Northeast	12/7/2018			1.71
BF421801000	BF421801001	ERIC_8874	BW Pine Green Reuse Area Brownfield Site	OCALA	MARION	Central	12/7/2018			1.83
BF161703000	BF161703001	ERIC_9419	Bella Mara Road Brownfield Site	JACKSONVILLE	DUVAL	Northeast	12/5/2018	2/12/2021	U	9.85
BF050401000	BF050401005	ERIC_12454	Rosa L. Jones Property	COCOA	BREVARD	Central	12/4/2018			0.68
BF131802000	BF131802001	ERIC_17924	Fleet Management Site	MIAMI BEACH	MIAMI-DADE	Southeast	11/7/2018			2.21
BF131803000	BF131803001	ERIC_17922	Maurice Gibb Memorial Park Site	MIAMI BEACH	MIAMI-DADE	Southeast	10/1/2018			3.37
BF131801000	BF131801001	ERIC_17923	Convention Center Site	MIAMI BEACH	MIAMI-DADE	Southeast	10/1/2018			70.82
BF160001000	BF160001017	ERIC_14589	Main Street MGP Brownfield Site	JACKSONVILLE	DUVAL	Northeast	9/18/2018			10.38

\* PRFBRS chose to voluntarily terminate BSRA

\*\* Please note, BSRA BF00101004 superseded by BF500101005 and BF00101006

^ BSRA revoked for failure to comply.

^^ Property ownership change. BSRA terminated.

~ SRCO withdrawn

7/1/2025

Area ID	Site ID	ERIC ID	Site Name	City	County	District	BSRA Date	SRCO Date	Closure	Acreage
BF139801000	BF139801015	ERIC_17228	Former Biscayne Chemical Site	MIAMI	MIAMI-DADE	Southeast	6/27/2018			2.63
BF291702000	BF291702001	ERIC_14027	Jackson Street Parking Lot Brownfield Site	TAMPA	HILLSBOROUGH	Southwest	12/29/2017			1.03
BF501601000	BF501601001	ERIC_17029	Former Cook Lumber	LAKE WORTH	PALM BEACH	Southeast	12/29/2017			9.65
BF531703000	BF531703001	ERIC_5799	Former Florida Tile Brownfield Site	LAKELAND	POLK	Southwest	12/22/2017	5/11/2021	U	21.48
BF291704000	BF291704001	ERIC_14036	Former Tampa Jai Alai Property Brownfield Site	TAMPA	HILLSBOROUGH	Southwest	12/21/2017			13.13
BF160504000	BF160504002	ERIC_14672	Former Webb Center	JACKSONVILLE	DUVAL	Northeast	12/19/2017			0.33
BF161702000	BF161702001	ERIC_14836	San Marco Crossing Site	JACKSONVILLE	DUVAL	Northeast	12/19/2017	3/9/2023	C	5.68
BF529701000	BF529701006	ERIC_9717	Clearwater Gas System	CLEARWATER	PINELLAS	Southwest	12/19/2017			7.46
BF590807000	BF590807001	ERIC_11204	Sanford Waterfront Catalyst Brownfield Site	SANFORD	SEMINOLE	Central	12/18/2017	11/5/2019	U	1.28
BF530101000	BF530101001	ERIC_13368	Bonnet Springs Park Brownfield Site	LAKELAND	POLK	Southwest	12/18/2017	5/2/2023	C	157.11
BF139912000	BF139912003	ERIC_17921	Coral Bay Cove Brownfield Site	MIAMI	MIAMI-DADE	Southeast	12/13/2017	3/28/2022	C	7.67
BF160001000	BF160001016	ERIC_14838	May Street Brownfield Site	JACKSONVILLE	DUVAL	Northeast	12/12/2017	3/27/2020	U	2.11
BF291703000	BF291703001	ERIC_3871	Former Pitch Pine Lumber Site	TAMPA	HILLSBOROUGH	Southwest	12/12/2017			2.61
BF411701000	BF411701001	ERIC_11592	The Addison Green Reuse Site	BRADENTON	MANATEE	Southwest	12/8/2017	5/9/2018	U	3.09
BF181701000	BF181701001	ERIC_12521	Colbert Lane Brownfield Site	PALM COAST	FLAGLER	Northeast	12/4/2017			182.86
BF481704000	BF481704001	ERIC_12861	1101 South Orange Brownfield Site	ORLANDO	ORANGE	Central	12/4/2017	10/25/2018	U	0.35
BF641004000	BF641004005	ERIC_9601	645 N. Atlantic Ave. Brownfield Site	DAYTONA BEACH	VOLUSIA	Central	12/4/2017			0.77
BF591001000	BF591001001	ERIC_11198	Former Albertson's Shopping Center Site	OVIEDO	SEMINOLE	Central	11/30/2017	9/27/2023	C	20.73
BF480401000	BF480401010	ERIC_12885	Former WDBO Brownfield Site	ORLANDO	ORANGE	Central	11/27/2017	12/18/2017	U	1.56
BF060003000	BF060003001	ERIC_10125	Uniweld Products Brownfield Site	DANIA BEACH	BROWARD	Southeast	11/17/2017			7.71
BF061702000	BF061702001	ERIC_6856	Pompano Beach Sports Park Reuse Site	POMPAN0 BEACH	BROWARD	Southeast	11/16/2017			11.76
BF161701000	BF161701001	ERIC_14812	BW Philips Bowden, LLC Site	JACKSONVILLE	DUVAL	Northeast	11/14/2017	3/30/2022	U	3.92
BF480201000	BF480201002	ERIC_12882	Old Fire Station Recreation Center	WINTER GARDEN	ORANGE	Central	8/4/2017	7/17/2019	C	0.63
BF411201000	BF411201002	ERIC_11599	Former Riverside Shell Station Site	PALMETTO	MANATEE	Southwest	7/24/2017	7/19/2019	U	0.92
BF411201000	BF411201003	ERIC_11602	Riverside North Properties	PALMETTO	MANATEE	Southwest	7/24/2017	11/26/2018	U	2.62
BF181001000	BF181001001	ERIC_12515	Former Lees Impoundment Brownfield Site	BUNNELL	FLAGLER	Northeast	7/7/2017	6/3/2022	C	4.56
BF291701000	BF291701001	ERIC_14040	Miroslav Mitusina Brownfield Site	RUSKIN	HILLSBOROUGH	Southwest	6/22/2017	4/7/2020	U	49.11
BF131104000	BF131104002	ERIC_14358	Jackson West Hospital Brownfield Site	DORAL	MIAMI-DADE	Southeast	3/28/2017	7/25/2018	U	26.44
BF139801000	BF139801014	ERIC_17917	T.M. Alexander Apartments Brownfield Site	MIAMI	MIAMI-DADE	Southeast	3/16/2017	1/2/2024	C	1.12
BF139801000	BF139801013	ERIC_17918	Civic Towers Brownfield Site	MIAMI	MIAMI-DADE	Southeast	3/16/2017	1/4/2024	C	2.6
BF139801000	BF139801012	ERIC_17920	Hawkins Park Green Reuse Site 2	MIAMI	MIAMI-DADE	Southeast	3/16/2017	1/9/2023	C	0.31
BF061604000	BF061604001	ERIC_17904	Former Palm Aire Golf Course Brownfield Site	POMPAN0 BEACH	BROWARD	Southeast	12/30/2016	11/30/2022	C	35.18
BF641602000	BF641602001	ERIC_9599	5811 Williamson Blvd Brownfield Site	PORT ORANGE	VOLUSIA	Central	12/30/2016	9/10/2021	C	7.14
BF641603000	BF641603001	ERIC_9598	261 South State Road 415 Site	OSTEEN	VOLUSIA	Central	12/28/2016	6/30/2023	C	1.18
BF591601000	BF591601001	ERIC_11194	1775 East Lake Mary Blvd Brownfield Site	SANFORD	SEMINOLE	Central	12/27/2016	11/7/2019	U	4.05
BF481603000	BF481603001	ERIC_12849	UCPM Former Landfill 4 Site	ORLANDO	ORANGE	Central	12/23/2016			22.43

\* PRFBRS chose to voluntarily terminate BSRA

\*\* Please note, BSRA BF00101004 superseded by BF500101005 and BF00101006

^ BSRA revoked for failure to comply.

^^ Property ownership change. BSRA terminated.

~ SRCO withdrawn

7/1/2025

Area ID	Site ID	ERIC ID	Site Name	City	County	District	BSRA Date	SRCO Date	Closure	Acreage
BF481602000	BF481602001	ERIC_12850	UCPM Former Landfill 5 Site	ORLANDO	ORANGE	Central	12/23/2016			12.15
BF481604000	BF481604001	ERIC_12851	UCPM Pershing Site	ORLANDO	ORANGE	Central	12/23/2016			34.34
BF060801000	BF060801001	ERIC_17915	Dania Point	DANIA BEACH	BROWARD	Southeast	12/22/2016			100.42
BF139801000	BF139801011	ERIC_9371	Miami-Dade Cnty and Puerto Rican Chamber Office Bldng	MIAMI	MIAMI-DADE	Southeast	12/22/2016			0.35
BF139911000	BF139911001	ERIC_17911	Centerra Apartments Green Reuse Site	MIAMI	MIAMI-DADE	Southeast	12/21/2016	8/30/2021	C	12.01
BF139904000	BF139904005	ERIC_17912	Liberty NW 79th Street Brownfields Site	MIAMI	MIAMI-DADE	Southeast	12/21/2016			2.12
BF131604000	BF131604001	ERIC_17913	Former Melting Pot Green Reuse Site	NORTH MIAMI	MIAMI-DADE	Southeast	12/21/2016			0.62
BF131603000	BF131603001	ERIC_17914	Peoples Gas East Parcel Green Reuse Site	NORTH MIAMI	MIAMI-DADE	Southeast	12/21/2016			5.74
BF501603000	BF501603001	ERIC_8842	Commerce Park Green Reuse Site	LAKE PARK	PALM BEACH	Southeast	12/19/2016	12/4/2023	C	10.55
BF291602000	BF291602001	ERIC_14012	Liberty Tampa Site	TAMPA	HILLSBOROUGH	Southwest	12/16/2016	1/16/2018	U	0.95
BF491101000	BF491101001	ERIC_12934	TOHO Square	KISSIMMEE	OSCEOLA	Central	12/15/2016	4/11/2017	U	2.27
BF501602000	BF501602001	ERIC_10877	Former Rood Landscape Green Reuse Site	TEQUESTA	PALM BEACH	Southeast	12/14/2016			8.01
BF061603000	BF061603001	ERIC_17910	Oakland Park Green Reuse Site	OAKLAND PARK	BROWARD	Southeast	12/14/2016			9.8
BF160001000	BF160001015	ERIC_14707	Former Duval Container Property	JACKSONVILLE	DUVAL	Northeast	12/13/2016	3/13/2020	C	14.52
BF160001000	BF160001014	ERIC_14794	Lofts at LaVilla Site	JACKSONVILLE	DUVAL	Northeast	12/13/2016	4/5/2018	C	1.78
BF161601000	BF161601001	ERIC_14797	Aquatic Townhomes Brownfields Site	ATLANTIC BEACH	DUVAL	Northeast	12/13/2016	7/26/2019	U	1.67
BF161602000	BF161602001	ERIC_14808	St. Johns Village Brownfield Site	JACKSONVILLE	DUVAL	Northeast	12/13/2016			5.86
BF521202000	BF521202002	ERIC_7218	Ulmerton & 66th Brownfield Site	LARGO	PINELLAS	Southwest	12/13/2016	6/8/2017	C	3.65
BF521601000	BF521601001	ERIC_9830	Former Zero Corporation Brownfield Site	CLEARWATER	PINELLAS	Southwest	12/13/2016			3.08
BF050401000	BF050401004	ERIC_12438	Forrest Avenue Site	COCOA	BREVARD	Central	12/12/2016	4/18/2018	U	0.11
BF050401000	BF050401003	ERIC_12439	Brunson Ave. Site	COCOA	BREVARD	Central	12/12/2016	7/6/2017	U	1.96
BF291502000	BF291502001	ERIC_14011	Hanna Ave	TAMPA	HILLSBOROUGH	Southwest	12/2/2016			11.11
BF160001000	BF160001013	ERIC_7432	Mary Eaves Site	JACKSONVILLE	DUVAL	Northeast	11/23/2016	6/29/2018	C	2.12
BF291002000	BF291002004	ERIC_14003	Freddy's Automotive	PLANT CITY	HILLSBOROUGH	Southwest	10/26/2016			0.26
BF480401000	BF480401009	ERIC_12841	Proposed Fire Station No. 2	ORLANDO	ORANGE	Central	10/21/2016	10/19/2018	U	2.47
BF139801000	BF139801010	ERIC_17909	Hawkins Park Green Reuse Site 1	MIAMI	MIAMI-DADE	Southeast	10/4/2016	2/9/2023	U	2.1
BF131602000	BF131602001	ERIC_17908	Willow Lakes Apartments Green Reuse Site	MIAMI GARDENS	MIAMI-DADE	Southeast	10/3/2016			10.02
BF370002000	BF370002007	ERIC_11784	Inn at Tallahassee	TALLAHASSEE	LEON	Northwest	8/24/2016	1/4/2017	U	1.96
BF139912000	BF139912002	ERIC_17903	Redland Market Village Brownfield Site	MIAMI	MIAMI-DADE	Southeast	6/27/2016			23.68
BF131601000	BF131601001	ERIC_17906	NW 62nd St Passive Park Green Reuse Site		MIAMI-DADE	Southeast	6/27/2016	7/27/2018	U	5.02
BF061601000	BF061601001	ERIC_7336	Former Palm Aire Golf Course Phase 2A Site	POMPANO BEACH	BROWARD	Southeast	5/31/2016	9/13/2018	C	8.97
BF061602000	BF061602001	ERIC_17902	Wisdom Village Crossing Brownfield Site	FORT LAUDERDALE	BROWARD	Southeast	5/2/2016	11/26/2019	C	0.8
BF411201000	BF411201001	ERIC_11527	Former Edenfield Property	PALMETTO	MANATEE	Southwest	1/28/2016			1.55
BF521202000	BF521202001	ERIC_6073	126th Ave. N. Dump	CLEARWATER	PINELLAS	Southwest	12/28/2015			15.2
BF591501000	BF591501001	ERIC_11196	The Shoppes at Sterling Creek	OVIEDO	SEMINOLE	Central	12/22/2015	6/19/2020	C	10.01
BF480801000	BF480801001	ERIC_12845	Maitland City Center	MAITLAND	ORANGE	Central	12/22/2015	6/22/2017	U	3.27

\* PRFBRS chose to voluntarily terminate BSRA

\*\* Please note, BSRA BF00101004 superseded by BF500101005 and BF00101006

^ BSRA revoked for failure to comply.

^^ Property ownership change. BSRA terminated.

~ SRCO withdrawn

7/1/2025

Area ID	Site ID	ERIC ID	Site Name	City	County	District	BSRA Date	SRCO Date	Closure	Acreage
BF501502000	BF501502001	ERIC_8846	Brookstone Delray Associates	DELRAY BEACH	PALM BEACH	Southeast	12/22/2015	2/25/2019	U	6.75
BF370002000	BF370002006	ERIC_11789	ZAC Brownfield (aka CSX Parcel 4)	TALLAHASSEE	LEON	Northwest	12/21/2015			9.56
BF650801000	BF650801001	ERIC_12311	Former St. Marks Refinery - West Parcel	ST MARKS	WAKULLA	Northwest	12/21/2015			46.2
BF650801000	BF650801002	ERIC_12312	St. Marks Refinery - East Parcel	ST MARKS	WAKULLA	Northwest	12/21/2015			9.54
BF481502000	BF481502001	ERIC_12855	Former Chevron Brownfield Site	ORLANDO	ORANGE	Central	12/21/2015	1/23/2020	U	0.57
BF131502000	BF131502001	ERIC_14354	Doral Legacy Park Green Reuse Site		MIAMI-DADE	Southeast	12/21/2015	12/10/2018	U	19.55
BF161501000	BF161501001	ERIC_14790	KWM Brownfield Site	JACKSONVILLE	DUVAL	Northeast	12/21/2015	11/29/2016	U	4.9
BF139912000	BF139912001	ERIC_17899	Keys Crossing, Ltd.	HOMESTEAD	MIAMI-DADE	Southeast	12/21/2015	4/2/2021	C	4.23
BF139904000	BF139904004	ERIC_17900	Former Westview Golf Course (South)		MIAMI-DADE	Southeast	12/21/2015			94.67
BF131503000	BF131503001	ERIC_17901	NE 83rd St. Green Reuse Site	EL PORTAL	MIAMI-DADE	Southeast	12/21/2015			1.92
BF291501000	BF291501001	ERIC_6946	Former Amazon Hose Property Site	TAMPA	HILLSBOROUGH	Southwest	12/21/2015	7/19/2018	C	2.28
BF160504000	BF160504001	ERIC_14788	Broadstone River House	JACKSONVILLE	DUVAL	Northeast	12/18/2015	7/9/2019	C	3.6
BF160001000	BF160001012	ERIC_14789	1737 Jessie Street Brownfield Site	JACKSONVILLE	DUVAL	Northeast	12/18/2015	1/29/2020	C	6.65
BF061503000	BF061503001	ERIC_17897	West Atlantic Blvd Apartments Investors LLC	POMPANO BEACH	BROWARD	Southeast	12/18/2015	11/30/2017	C	26.84
BF501501000	BF501501001	ERIC_10735	Former Servico Landfill Brownfield Site	WEST PALM BEACH	PALM BEACH	Southeast	12/16/2015	1/26/2023	C	8.94
BF250701000	BF250701001	ERIC_14881	226 W. Main St.	WAUCHULA	HARDEE	Southwest	12/16/2015			0.19
BF131501000	BF131501001	ERIC_9217	Taylor Park Green Reuse Site	NORTH MIAMI BEACH	MIAMI-DADE	Southeast	12/16/2015			21.88
BF481501000	BF481501001	ERIC_12822	GENE Brownfield Site	ORLANDO	ORANGE	Central	12/15/2015			46.4
BF061502000	BF061502001	ERIC_17898	Northwest Gardens V Brownfield Site	FORT LAUDERDALE	BROWARD	Southeast	12/10/2015	2/14/2020	C	5.87
BF061501000	BF061501001	ERIC_15396	Pan American Coral Springs Brownfield Site	CORAL SPRINGS	BROWARD	Southeast	12/9/2015	3/10/2021	C	3.41
BF521501000	BF521501001	ERIC_6932	Former Arab Pest Control Brownfield Site	ST PETERSBURG	PINELLAS	Southwest	10/26/2015	10/23/2017	C	0.43
BF291404000	BF291404001	ERIC_13997	Port Redwing Brownfield Site	GIBSONTON	HILLSBOROUGH	Southwest	10/13/2015	7/16/2024	C	31.24
BF500301000	BF500301001	ERIC_10771	Belle Glade Hospital Brownfield Site	BELLE GLADE	PALM BEACH	Southeast	8/18/2015			14.64
BF501401000	BF501401001	ERIC_10788	480 US Hwy 27 North	SOUTH BAY	PALM BEACH	Southeast	8/5/2015			0.29
BF641004000	BF641004004	ERIC_9577	Former Tire Kingdom Brownfield Site	DAYTONA BEACH	VOLUSIA	Central	12/31/2014	12/15/2015	U	0.94
BF291406000	BF291406001	ERIC_13703	Peoples Gas System - North Channelside Drive	TAMPA	HILLSBOROUGH	Southwest	12/30/2014			7.31
BF291402000	BF291402001	ERIC_17036	Delaney Creek Brownfield Redevelopment Area - Exide Tech.	TAMPA	HILLSBOROUGH	Southwest	12/29/2014			36.18
BF481401000	BF481401001	ERIC_12541	Orlando Drum Co.	ORLANDO	ORANGE	Central	12/24/2014			8.21
BF161402000	BF161402001	ERIC_14435	Gerdau Ameristeel Site	JACKSONVILLE	DUVAL	Northeast	12/24/2014			149.28
BF291405000	BF291405001	ERIC_6652	Spruce Street Landfill #2 Site	TAMPA	HILLSBOROUGH	Southwest	12/24/2014	3/13/2018	C	3.42
BF521401000	BF521401001	ERIC_7148	Former Countryside Executive Golf Course	CLEARWATER	PINELLAS	Southwest	12/24/2014	11/29/2016	C	44.28
BF131403000	BF131403001	ERIC_17896	Rucks Park Brownfield Site	NORTH MIAMI	MIAMI-DADE	Southeast	12/23/2014			6.64
BF161403000	BF161403001	ERIC_3900	Bill Johns Waste Oil Site	JACKSONVILLE	DUVAL	Northeast	12/23/2014	5/21/2018	C	3.52
BF521304000	BF521304001	ERIC_9900	Seminole Mall Site	SEMINOLE	PINELLAS	Southwest	12/22/2014			39.56
BF480401000	BF480401008	ERIC_12551	Soccer Stadium (National Electric Coil aka Magnetec)	ORLANDO	ORANGE	Central	12/19/2014	12/5/2024	C	14.85
BF480703000	BF480703002	ERIC_12791	Rio Grande Acquisition Company	ORLANDO	ORANGE	Central	12/19/2014	1/28/2015	U	20.81

\* PRFBRS chose to voluntarily terminate BSRA

\*\* Please note, BSRA BF00101004 superseded by BF500101005 and BF00101006

^ BSRA revoked for failure to comply.

^^ Property ownership change. BSRA terminated.

~ SRCO withdrawn

7/1/2025

Area ID	Site ID	ERIC ID	Site Name	City	County	District	BSRA Date	SRCO Date	Closure	Acreage
BF480401000	BF480401007	ERIC_12793	Creative Digital Village	ORLANDO	ORANGE	Central	12/19/2014			67
BF480401000	BF480401008	ERIC_12839	Soccer Stadium (Petroleum Contamination Area)	ORLANDO	ORANGE	Central	12/19/2014	4/27/2017	U	14.85
BF480401000	BF480401008	ERIC_12840	Soccer Stadium (Pesticide and Metals Contamination Area)	ORLANDO	ORANGE	Central	12/19/2014	6/19/2023	C	14.85
BF161401000	BF161401001	ERIC_14760	Penman Plaza Ace Parcel Brownfield Site	NEPTUNE BEACH	DUVAL	Northeast	12/19/2014	11/29/2016	U	2.07
BF590802000	BF590802002	ERIC_11186	Casselberry Former Shell Station Site	CASSELBERRY	SEMINOLE	Central	11/25/2014	5/21/2020	U	0.65
BF640401000	BF640401003	ERIC_9594	ERAU Former Bus Depot	DAYTONA BEACH	VOLUSIA	Central	10/28/2014	7/20/2015	U	13.71
BF139901000	BF139901002	ERIC_17894	Opa-Locka CDC Brownfield Site	OPA-LOCKA	MIAMI-DADE	Southeast	9/26/2014			0.2
BF500402000	BF500402001	ERIC_10785	West Palm Beach Intermodal Transfer Facility / The Wedge		PALM BEACH	Southeast	9/12/2014			4.28
BF531205000	BF531205001	ERIC_13435	Cigar Factory Site	BARTOW	POLK	Southwest	9/11/2014	12/9/2015	U	2.06
BF291306000	BF291306001	ERIC_6572	Nebraska Avenue Site	TAMPA	HILLSBOROUGH	Southwest	9/3/2014	11/18/2016	C	1.54
BF291403000	BF291403001	ERIC_7501	Former Hudson Nursery Brownfield Site	TAMPA	HILLSBOROUGH	Southwest	8/19/2014	6/26/2019	C	10.35
BF139801000	BF139801009	ERIC_17893	Wynwood N. Miami	MIAMI	MIAMI-DADE	Southeast	6/24/2014	10/29/2015	U	1.34
BF291303000	BF291303001	ERIC_13704	Former Redwing Trucking	TAMPA	HILLSBOROUGH	Southwest	5/16/2014			29.06
BF139801000	BF139801008	ERIC_17892	St. Martin's Place	MIAMI	MIAMI-DADE	Southeast	3/17/2014	12/19/2014	C	0.65
BF131203000	BF131203001	ERIC_14073	Former Peoples Gas System	NORTH MIAMI BEACH	MIAMI-DADE	Southeast	12/31/2013			17.69
BF130843000	BF130843002	ERIC_17890	Procacci 1400, LLC		MIAMI-DADE	Southeast	12/31/2013			8.14
BF130843000	BF130843001	ERIC_17891	Procacci Sweetwater, LLC		MIAMI-DADE	Southeast	12/31/2013	5/20/2022	C	1.93
BF139801000	BF139801007	ERIC_7254	Mandy's Market	MIAMI	MIAMI-DADE	Southeast	12/31/2013	10/2/2017	C	0.97
BF171102000	BF171102001	ERIC_6758	Mahogany Mill Road Boat Ramp	PENSACOLA	ESCAMBIA	Northwest	12/27/2013	12/7/2015	C	2.93
BF481303000	BF481303001	ERIC_12792	Southside Shoppes	ORLANDO	ORANGE	Central	12/23/2013	11/26/2024	C	3.14
BF481304000	BF481304001	ERIC_12830	Circle C Cars	ORLANDO	ORANGE	Central	12/23/2013			0.72
BF641004000	BF641004002	ERIC_9527	Former Llyod Buick/Cadillac Site	DAYTONA BEACH	VOLUSIA	Central	12/23/2013	12/27/2021	U	4.95
BF641301000	BF641301001	ERIC_9579	Country Club Crossing and The Greens at Country Club	DELAND	VOLUSIA	Central	12/23/2013	11/6/2015	C	103.38
BF061302000	BF061302001	ERIC_6865	Sunrise Wal-Mart Site	SUNRISE	BROWARD	Southeast	12/20/2013	4/12/2018	C	16.64
BF411301000	BF411301001	ERIC_6985	BAV Bradenton Brownfield Site	BRADENTON	MANATEE	Southwest	12/20/2013	5/18/2017	C	0.96
BF291305000	BF291305001	ERIC_13957	Tampa Water Works Park Site	TAMPA	HILLSBOROUGH	Southwest	12/12/2013			4.39
BF641004000	BF641004001	ERIC_9585	Former Massey Motors	DAYTONA BEACH	VOLUSIA	Central	12/12/2013	7/10/2018	U	2.67
BF061301000	BF061301001	ERIC_7373	5001 North Federal Highway Site	POMPANO BEACH	BROWARD	Southeast	11/14/2013	10/8/2018	C	8.41
BF130502000	BF130502001	ERIC_17889	Miami River Marina Site	MIAMI	MIAMI-DADE	Southeast	11/1/2013	4/23/2020	C	6.72
BF291302000	BF291302001	ERIC_13966	Former Gulf Coast Metals Site	TAMPA	HILLSBOROUGH	Southwest	9/9/2013	3/23/2022	C	3.24
BF500101000	BF500101007	ERIC_10789	Jefferson at West Palm Beach	WEST PALM BEACH	PALM BEACH	Southeast	6/28/2013			11.14
BF480401000	BF480401006	ERIC_12832	400 North Orange	ORLANDO	ORANGE	Central	5/13/2013	2/12/2014	U	5.66
BF590802000	BF590802001	ERIC_11185	Casselberry Police Department Site	CASSELBERRY	SEMINOLE	Central	5/9/2013			1.87
BF131301000	BF131301001	ERIC_17888	Land South Partners I Brownfield Site	NORTH MIAMI	MIAMI-DADE	Southeast	3/13/2013	8/24/2016	U	0.31
BF139801000	BF139801006	ERIC_17886	Resorts World Miami Brownfield Site	MIAMI	MIAMI-DADE	Southeast	12/28/2012			13.95
BF131201000	BF131201001	ERIC_17887	Wal-Mart Neighborhood Market Site	HOMESTEAD	MIAMI-DADE	Southeast	12/28/2012	5/8/2023	U	5.8

\* PRFBRS chose to voluntarily terminate BSRA

\*\* Please note, BSRA BF00101004 superseded by BF500101005 and BF00101006

^ BSRA revoked for failure to comply.

^^ Property ownership change. BSRA terminated.

~ SRCO withdrawn

7/1/2025

Area ID	Site ID	ERIC ID	Site Name	City	County	District	BSRA Date	SRCO Date	Closure	Acreage
BF139901000	BF139901001	ERIC_9290	TMR Cairo Lane Site	OPA-LOCKA	MIAMI-DADE	Southeast	12/28/2012			15.62
BF531206000	BF531206001	ERIC_17005	K.C. Industries Properties, LLC Site	MULBERRY	POLK	Southwest	12/26/2012			198.02
BF480703000	BF480703001	ERIC_12708	Former Daniels Publishing Facility	ORLANDO	ORANGE	Central	12/21/2012	2/1/2022	C	2.01
BF480702000	BF480702001	ERIC_12783	Mills Park	ORLANDO	ORANGE	Central	12/21/2012	12/26/2012	U	14
BF050401000	BF050401002	ERIC_12421	Former Steve's Cycles	COCOA	BREVARD	Central	12/17/2012	12/10/2013	U	0.97
BF291202000	BF291202001	ERIC_5897	Photoengraving Brownfield Site	TAMPA	HILLSBOROUGH	Southwest	12/3/2012			17.45
BF561101000	BF561101002	ERIC_17884	Parcel 2	FORT PIERCE	ST. LUCIE	Southeast	11/29/2012	7/16/2013	U	0.69
BF561101000	BF561101003	ERIC_17885	Parcel 3	FORT PIERCE	ST. LUCIE	Southeast	11/29/2012	7/10/2013	U	0.41
BF561101000	BF561101001	ERIC_6906	Parcel 1	FORT PIERCE	ST. LUCIE	Southeast	11/29/2012	8/4/2023	U	3.75
BF050401000	BF050401001	ERIC_12430	Marc T, LLC Brownfield Site	COCOA	BREVARD	Central	11/19/2012	4/22/2013	U	0.59
BF461101000	BF461101001	ERIC_13235	Former Happy Food Store #526	FORT WALTON BEACH	OKALOOSA	Northwest	9/7/2012	4/7/2016	C	0.67
BF291201000	BF291201001	ERIC_5948	Brandon Toyota Site	TAMPA	HILLSBOROUGH	Southwest	8/14/2012			17.99
BF501201000	BF501201001	ERIC_10757	Former Pike Utilities Brownfield Site	LAKE WORTH	PALM BEACH	Southeast	8/9/2012			9.79
BF591201000	BF591201001	ERIC_6273	Former M&M Auto Parts & Salvage	SANFORD	SEMINOLE	Central	7/30/2012	12/13/2024	C	6.6
BF370002000	BF370002002	ERIC_11758	Former Tallahassee Coca Cola Bottling Plant	TALLAHASSEE	LEON	Northwest	5/24/2012			1.19
BF291102000	BF291102001	ERIC_13971	Former Sun City BP	SUN CITY CENTER	HILLSBOROUGH	Southwest	12/29/2011	6/17/2013	U	0.63
BF370002000	BF370002005	ERIC_11772	Former Ro-Mac Lumber & Supply Co. of Tallahassee	TALLAHASSEE	LEON	Northwest	12/22/2011	10/2/2013	C	2.81
BF061103000	BF061103001	ERIC_6811	ZF Brownfield Site	MIRAMAR	BROWARD	Southeast	12/22/2011	12/10/2012	C	16
BF291001000	BF291001002	ERIC_13968	International Ship Repair	TAMPA	HILLSBOROUGH	Southwest	12/19/2011			16.49
BF481101000	BF481101001	ERIC_7290	Former Woodbury Chemical Site	ORLANDO	ORANGE	Central	12/16/2011			2.33
BF411101000	BF411101001	ERIC_7025	Widewaters Bradenton, LLC - Manatee River Brownfield Site	BRADENTON	MANATEE	Southwest	12/9/2011	1/23/2014	C	0.85
BF130601000	BF130601001	ERIC_7505	Medley Development Site	MEDLEY	MIAMI-DADE	Southeast	10/13/2011	6/17/2019	C	9.27
BF480401000	BF480401005	ERIC_12767	Steel House Brownfield Site	ORLANDO	ORANGE	Central	7/15/2011	6/15/2018	U	5
BF291002000	BF291002001	ERIC_13946	Former Stock Building Supply/McGinnis Lumber Yard	PLANT CITY	HILLSBOROUGH	Southwest	6/10/2011	12/21/2023	C	5.42
BF291002000	BF291002002	ERIC_13947	Gro-Mor Fertilizer Plant	PLANT CITY	HILLSBOROUGH	Southwest	6/10/2011	12/21/2023	C	1.26
BF291002000	BF291002003	ERIC_6668	Hydraulic Hose Site	PLANT CITY	HILLSBOROUGH	Southwest	6/10/2011	9/19/2016	C	1.14
BF529701000	BF529701005	ERIC_9876	CarPro	CLEARWATER	PINELLAS	Southwest	4/21/2011			0.28
BF440701000	BF440701001	ERIC_11627	Old Baltuff Dump Site	MIDDLE TORCH KEY	MONROE	South	12/29/2010			17.77
BF370002000	BF370002003	ERIC_11769	Salie Property	TALLAHASSEE	LEON	Northwest	12/29/2010	9/28/2012	U	4.3
BF370002000	BF370002004	ERIC_11770	CSX Parcel 1	TALLAHASSEE	LEON	Northwest	12/29/2010	3/14/2014	C	2.38
BF291001000	BF291001001	ERIC_13731	Deteco	TAMPA	HILLSBOROUGH	Southwest	12/28/2010			7.71
BF411001000	BF411001001	ERIC_11519	Former Wellcraft Site	SARASOTA	MANATEE	Southwest	12/22/2010	10/18/2017	C	22.33
BF290101000	BF290101004	ERIC_13934	Winner Metals	TAMPA	HILLSBOROUGH	Southwest	12/9/2010	12/29/2021	C	42
BF069901000	BF069901001	ERIC_17875	Pompano Beach Replacement Library and Civic Campus A	POMPAÑO BEACH	BROWARD	Southeast	12/6/2010	12/29/2010	U	0.5
BF069901000	BF069901002	ERIC_6864	Pompano Beach Replacement Library and Civic Campus B	POMPAÑO BEACH	BROWARD	Southeast	12/6/2010	6/26/2012	U	0.75
BF160001000	BF160001010	ERIC_14801	North Point Brownfield Site	JACKSONVILLE	DUVAL	Northeast	7/29/2010			10

\* PRFBRS chose to voluntarily terminate BSRA

\*\* Please note, BSRA BF00101004 superseded by BF500101005 and BF00101006

^ BSRA revoked for failure to comply.

^^ Property ownership change. BSRA terminated.

~ SRCO withdrawn

7/1/2025

Area ID	Site ID	ERIC ID	Site Name	City	County	District	BSRA Date	SRCO Date	Closure	Acreage
BF520801000	BF520801003	ERIC_7216	Dansville South Historic Landfill Site	LARGO	PINELLAS	Southwest	6/24/2010	4/1/2015	C	0.95
BF520801000	BF520801001	ERIC_7217	Dansville North Historic Landfill Site	LARGO	PINELLAS	Southwest	6/24/2010	1/13/2016	C	0.91
BF520801000	BF520801002	ERIC_7604	Dansville Central Historic Landfill Site	LARGO	PINELLAS	Southwest	6/24/2010	9/24/2015	C	0.68
BF500902000	BF500902001	ERIC_10740	Pahokee Plaza	PAHOKEE	PALM BEACH	Southeast	4/2/2010	11/1/2011	U	2.36
BF290901000	BF290901001	ERIC_13925	Lakewood Pointe	SEFFNER	HILLSBOROUGH	Southwest	12/30/2009	4/5/2021	C	15.01
BF100501000	BF100501004	ERIC_6880	Former U.S. Logistics/NexGen Environmental Facility	GREEN COVE SPRINGS	CLAY	Northeast	12/30/2009	2/16/2016	C	4.01
BF050802000	BF050802001	ERIC_12419	Mobility Scooter Center, Inc.	MELBOURNE	BREVARD	Central	12/22/2009	8/22/2024	U	0.78
BF480401000	BF480401004	ERIC_12729	Future Dr. P. Phillips Orlando Performing Arts Center	ORLANDO	ORANGE	Central	12/22/2009	1/13/2011	U	3.51
BF640401000	BF640401002	ERIC_9562	Embry-Riddle Aeronautical University	DAYTONA BEACH	VOLUSIA	Central	12/22/2009	3/2/2010	U	77
BF160001000	BF160001009	ERIC_9444	Riverside Avenue Brownfield	JACKSONVILLE	DUVAL	Northeast	12/21/2009	12/14/2020	C	7.06
BF110901000	BF110901001	ERIC_11945	Hubert's Welding and Repair Site	NAPLES	COLLIER	South	12/18/2009	1/20/2011	U	0.62
BF480901000	BF480901001	ERIC_7311	Bonita Fountains Phase 2: ROCC	ORLANDO	ORANGE	Central	12/18/2009	7/21/2016	C	44.77
BF420901000	BF420901001	ERIC_11039	Fluid Routing Solutions, Inc.	OCALA	MARION	Central	12/17/2009	9/10/2020	C	35
BF160506000	BF160506001	ERIC_14671	Hughes Electrical Supply Site	JACKSONVILLE	DUVAL	Northeast	11/19/2009			1.2
BF640901000	BF640901001	ERIC_9565	RJS Investments of Central Florida, d/b/a Indian River Glass	NEW SMYRNA BEACH	VOLUSIA	Central	11/3/2009	10/13/2010	U	0.85
BF500302000	BF500302001	ERIC_10726	Northwood Anchor Site	WEST PALM BEACH	PALM BEACH	Southeast	9/2/2009	7/15/2020	U	3.02
BF290401000	BF290401001	ERIC_6637	The Place at Channelside	TAMPA	HILLSBOROUGH	Southwest	8/7/2009	10/9/2017	U	2.15
BF580801000	BF580801001	ERIC_10054	Eager Beaver Car Wash & John's Auto Care	VENICE	SARASOTA	South	12/30/2008	5/27/2025	U	0.5
BF590806000	BF590806001	ERIC_11151	Sandefur Site	SANFORD	SEMINOLE	Central	12/30/2008	4/24/2009	U	69.95
BF480805000	BF480805001	ERIC_12572	Orlando Commerce Park ROCC Site	ORLANDO	ORANGE	Central	12/30/2008			60.73
BF529901000	BF529901003	ERIC_6933	Wal-Mart St. Pete (C) Brownfields Site	SAINT PETERSBURG	PINELLAS	Southwest	12/29/2008	3/21/2014	C	10.18
BF290804000	BF290804001	ERIC_6654	Crosland-Varela Site	TAMPA	HILLSBOROUGH	Southwest	12/24/2008	10/14/2015	C	6.85
BF280601000	BF280601001	ERIC_13296	Ridgewood Auto Spa	SEBRING	HIGHLANDS	South	12/23/2008			0.36
BF290803000	BF290803001	ERIC_13979	EnviroFocus Technologies	TAMPA	HILLSBOROUGH	Southwest	12/22/2008			21.18
BF160803000	BF160803001	ERIC_6832	Jacksonville Raceway	JACKSONVILLE	DUVAL	Northeast	12/18/2008	9/3/2010	C	117.03
BF160804000	BF160804001	ERIC_6775	CLH-Jacksonville	NEPTUNE BEACH	DUVAL	Northeast	12/8/2008	9/7/2017	C	1.27
BF640401000	BF640401001	ERIC_9551	Clyde Morris Former Landfill	DAYTONA BEACH	VOLUSIA	Central	12/8/2008			3.63
BF050801000	BF050801001	ERIC_12414	Casbah Properties, LLC Site	MELBOURNE	BREVARD	Central	10/23/2008	12/18/2008	U	0.32
BF290802000	BF290802002	ERIC_13922	SSC Tampa Kracker Road, LLC, Parcel B	GIBSONTON	HILLSBOROUGH	Southwest	9/2/2008	7/23/2024	C	8.49
BF290802000	BF290802003	ERIC_13923	SSC 115 Tampa Kracker Road, Parcel C	GIBSONTON	HILLSBOROUGH	Southwest	9/2/2008			74.08
BF290702000	BF290702001	ERIC_13678	TECO Hookers Point		HILLSBOROUGH	Southwest	8/8/2008	10/7/2022	C	31.88
BF290802000	BF290802001	ERIC_13920	Kracker Road aka Tampa Livestock	GIBSONTON	HILLSBOROUGH	Southwest	8/6/2008			29.73
BF500701000	BF500701001	ERIC_10717	Delray Beach CRA Brownfield Site	DELRAY BEACH	PALM BEACH	Southeast	2/1/2008	11/17/2014	U	2.42
BF560702000	BF560702001	ERIC_12104	1150 S. Federal Highway	FORT PIERCE	ST. LUCIE	Southeast	12/28/2007	~		2.33
BF590702000	BF590702001	ERIC_11104	Former Central Florida Drum Facility	WINTER SPRINGS	SEMINOLE	Central	12/27/2007	5/3/2019	C	6.45
BF590703000	BF590703001	ERIC_11144	Lowe's Store Fern Park	FERN PARK	SEMINOLE	Central	12/27/2007	3/31/2009	U	9.45

\* PRFBRS chose to voluntarily terminate BSRA

\*\* Please note, BSRA BF00101004 superseded by BF500101005 and BF00101006

^ BSRA revoked for failure to comply.

^^ Property ownership change. BSRA terminated.

~ SRCO withdrawn

7/1/2025

Area ID	Site ID	ERIC ID	Site Name	City	County	District	BSRA Date	SRCO Date	Closure	Acreage
BF480401000	BF480401002	ERIC_12537	Former Spellman Engineering	ORLANDO	ORANGE	Central	12/27/2007			19.2
BF480401000	BF480401003	ERIC_12732	Former OUC Power Plant	ORLANDO	ORANGE	Central	12/27/2007			9.8
BF290704000	BF290704001	ERIC_13921	Tampa Tank and Welding Property	TAMPA	HILLSBOROUGH	Southwest	12/27/2007	9/14/2011	U	4.31
BF560601000	BF560601001	ERIC_12070	Center Road Brownfield	FORT PIERCE	ST. LUCIE	Southeast	12/26/2007			56.59
BF170701000	BF170701001	ERIC_6737	Former Runyan Shipyard, Bayou Chico	PENSACOLA	ESCAMBIA	Northwest	12/26/2007	7/27/2017	C	13.8
BF100501000	BF100501002	ERIC_12489	GCS Downtown Phase I, Parcel B	GREEN COVE SPRINGS	CLAY	Northeast	12/24/2007	7/19/2012	U	1.74
BF100501000	BF100501001	ERIC_12493	GCS Downtown Phase I, Parcel A	GREEN COVE SPRINGS	CLAY	Northeast	12/24/2007	2/15/2010	C	2.15
BF100501000	BF100501003	ERIC_12494	GCS Downtown Phase I, Parcel C	GREEN COVE SPRINGS	CLAY	Northeast	12/24/2007	6/21/2013	U	1.75
BF290703000	BF290703001	ERIC_6574	Tampa International Center Brownfield Site	TAMPA	HILLSBOROUGH	Southwest	12/20/2007	6/12/2009	C	29.36
BF170504000	BF170504001	ERIC_6761	Century Florida Site	CENTURY	ESCAMBIA	Northwest	12/20/2007	6/26/2009	C	37
BF050701000	BF050701001	ERIC_12415	Manatee Point	MELBOURNE	BREVARD	Central	12/19/2007	11/1/2012	U	0.48
BF480704000	BF480704001	ERIC_12706	Baratta ROCC Site	APOPKA	ORANGE	Central	12/19/2007	5/30/2008	U	3.05
BF640701000	BF640701001	ERIC_9558	William Lofts	DAYTONA BEACH	VOLUSIA	Central	11/21/2007	5/5/2014	U	3.7
BF480401000	BF480401001	ERIC_12689	Orlando Events Center	ORLANDO	ORANGE	Central	9/5/2007			8.91
BF590701000	BF590701001	ERIC_11121	Former Microvia Facility	CASSELBERRY	SEMINOLE	Central	8/6/2007	12/10/2024	C	8.39
BF160001000	BF160001008	ERIC_14785	Keystone/Wigmore Street	JACKSONVILLE	DUVAL	Northeast	7/11/2007			70
BF160001000	BF160001006	ERIC_14621	Hogan's Creek Site, Parcel 1A	JACKSONVILLE	DUVAL	Northeast	6/19/2007			3.18
BF160001000	BF160001007	ERIC_17978	Hogan's Creek Site, Parcel 1B	JACKSONVILLE	DUVAL	Northeast	6/19/2007			2.27
BF360501000	BF360501001	ERIC_11278	Garden Street Iron & Metal, Inc.	FORT MYERS	LEE	South	5/29/2007			9.86
BF290604000	BF290604001	ERIC_13943	Waters Center Brownfield Site	TAMPA	HILLSBOROUGH	Southwest	12/27/2006	5/27/2010	C	18.88
BF540501000	BF540501001	ERIC_14737	Bill Ding Avenue Brownfield Site	PALATKA	PUTNAM	Northeast	12/27/2006	1/29/2014	C	8.34
BF160001000	BF160001005	ERIC_6816	JM Family Enterprises	JACKSONVILLE	DUVAL	Northeast	12/27/2006	11/26/2007	U	3.94
BF180601000	BF180601001	ERIC_12503	Bunnell Industrial/Former Rayonier Plant Site	BUNNELL	FLAGLER	Northeast	12/21/2006			43.69
BF290606000	BF290606001	ERIC_13895	Former Tampa Armature Works Site	TAMPA	HILLSBOROUGH	Southwest	12/20/2006			4.27
BF290607000	BF290607001	ERIC_13910	Avion Park at Westshore Site	TAMPA	HILLSBOROUGH	Southwest	12/20/2006	10/13/2010	U	18.89
BF360301000	BF360301001	ERIC_11279	Eastwood Village Brownfield Site	FORT MYERS	LEE	South	12/19/2006			44.27
BF370601000	BF370601001	ERIC_17965	Sunland Hospital Parcel I	TALLAHASSEE	LEON	Northwest	12/12/2006	12/22/2006	U	5.18
BF550601000	BF550601001	ERIC_13653	Former Ponce de Leon Golf Course	ST AUGUSTINE	ST. JOHNS	Northeast	12/11/2006			284
BF529901000	BF529901002	ERIC_6974	City of St. Petersburg/Former Atherton Oil	ST PETERSBURG	PINELLAS	Southwest	10/10/2006	2/2/2017	C	0.83
BF290603000	BF290603001	ERIC_6576	Circle Tampa Venture I	TAMPA	HILLSBOROUGH	Southwest	9/20/2006	5/31/2007	C	28
BF360302000	BF360302001	ERIC_11268	2780 South Street	FORT MYERS	LEE	South	6/20/2006	4/23/2008	U	1.68
BF290602000	BF290602001	ERIC_5997	Former 43rd Street Bay Drum Site	TAMPA	HILLSBOROUGH	Southwest	5/3/2006			4.3
BF290302000	BF290302001	ERIC_13692	Gerdau Ameristeel Brownfield Site	TAMPA	HILLSBOROUGH	Southwest	4/10/2006			30
BF580302000	BF580302002	ERIC_7061	Lowes Crofut Parcel and Outparcel A Site	SARASOTA	SARASOTA	South	2/27/2006	6/14/2017	C	4
BF160501000	BF160501001	ERIC_7606	Wal-Mart Phillips Highway Brownfields Site	JACKSONVILLE	DUVAL	Northeast	12/21/2005	12/23/2013	C	21.23
BF290503000	BF290503001	ERIC_13690	Channelside Holdings Site	TAMPA	HILLSBOROUGH	Southwest	12/20/2005	7/26/2024	C	8

\* PRFBRSR chose to voluntarily terminate BSRA

\*\* Please note, BSRA BF00101004 superseded by BF500101005 and BF00101006

^ BSRA revoked for failure to comply.

^^ Property ownership change. BSRA terminated.

~ SRCO withdrawn

7/1/2025

Area ID	Site ID	ERIC ID	Site Name	City	County	District	BSRA Date	SRCO Date	Closure	Acreage
BF500101000	BF500101006	ERIC_10668	DR Palm Beach Residential Complex Brownfield Site	WEST PALM BEACH	PALM BEACH	Southeast	12/1/2005			14.11
BF290501000	BF290501001	ERIC_9188	W.T. Edwards Brownfields Site	TAMPA	HILLSBOROUGH	Southwest	11/29/2005	5/7/2008	U	26
BF580302000	BF580302001	ERIC_7059	Lowes DMB Parcel and Outparcels B&C Site	SARASOTA	SARASOTA	South	11/15/2005	4/5/2013	C	19
BF050301000	BF050301001	ERIC_12377	KIP I, L.L.C. Brownfield Site	PALM BAY	BREVARD	Central	10/20/2005			33
BF500101000	BF500101005	ERIC_7179	DR Palm Beach Hotel Complex Brownfield Site	WEST PALM BEACH	PALM BEACH	Southeast	10/20/2005			1.5
BF139801000	BF139801005	ERIC_14262	McArthur Dairy 7th Avenue	MIAMI	MIAMI-DADE	Southeast	10/7/2005			5.2
BF529701000	BF529701004	ERIC_9859	Clearwater Automotive Site	CLEARWATER	PINELLAS	Southwest	9/26/2005	7/1/2009	U	3
BF290204000	BF290204001	ERIC_13709	Former Southern Mill Creek Products Site	TAMPA	HILLSBOROUGH	Southwest	7/25/2005			8.38
BF370002000	BF370002001	ERIC_6968	Tallahassee Residence Inn Brownfield Site	TALLAHASSEE	LEON	Northwest	7/14/2005	3/19/2007	C	2.26
BF520501000	BF520501001	ERIC_6931	Community Waterfront Park	ST PETERSBURG	PINELLAS	Southwest	5/19/2005	9/23/2010	C	1.93
BF139801000	BF139801004	ERIC_7549	Los Suenos Multifamily Apartments (Dreamers, LLC)	MIAMI	MIAMI-DADE	Southeast	12/20/2004	1/16/2020	C	1.46
BF139904000	BF139904002	ERIC_14260	Corinthian Multifamily Apartments (Liberty City Holdings, LLC)	MIAMI	MIAMI-DADE	Southeast	12/17/2004	10/26/2020	C	5.74
BF060401000	BF060401001	ERIC_6725	Harbour Cove Associates	HALLANDALE BEACH	BROWARD	Southeast	12/17/2004	5/6/2009	C	7.06
BF290304000	BF290304001	ERIC_6570	12th Street Operations Yard	TAMPA	HILLSBOROUGH	Southwest	12/9/2004	11/3/2011	C	9.66
BF139801000	BF139801003	ERIC_14258	Wagner Square (Former Civic Center)	MIAMI	MIAMI-DADE	Southeast	8/13/2004	10/7/2005	U	3
BF480201000	BF480201001	ERIC_6319	Former Gray Truck Line Property	WINTER GARDEN	ORANGE	Central	4/19/2004	7/17/2017	C	5
BF060301000	BF060301001	ERIC_6621	Dania Motocross	DANIA BEACH	BROWARD	Southeast	4/12/2004	8/1/2006	C	12
BF170302000	BF170302001	ERIC_12219	Sunray Enterprises, Inc. (Keck)	PENSACOLA	ESCAMBIA	Northwest	3/18/2004	3/2/2006	U	1
BF290303000	BF290303001	ERIC_13837	Centro Asturiano Place	TAMPA	HILLSBOROUGH	Southwest	3/10/2004	9/1/2006	U	7
BF139904000	BF139904001	ERIC_17872	Siegel Gas and Oil Corp	MIAMI	MIAMI-DADE	Southeast	2/11/2004	5/17/2011	U	2.22
BF139801000	BF139801002	ERIC_17874	FEC Buena Vista	MIAMI	MIAMI-DADE	Southeast	12/18/2003			51
BF529901000	BF529901001	ERIC_9843	Peoples Gas System (Former TECO Complex)	ST PETERSBURG	PINELLAS	Southwest	12/16/2003	7/10/2019	U	5
BF130301000	BF130301001	ERIC_14240	Beacon Lakes (AMB Codina)	MIAMI	MIAMI-DADE	Southeast	11/24/2003	5/9/2012	U	156
BF170201000	BF170201001	ERIC_6752	Pensacola Mainstreet, Inc.	PENSACOLA	ESCAMBIA	Northwest	10/3/2003	10/1/2010	C	3
BF290301000	BF290301001	ERIC_13826	Riverfront (Tampa Heights) Complex	TAMPA	HILLSBOROUGH	Southwest	10/1/2003	11/23/2005	U	12
BF529701000	BF529701003	ERIC_7195	Former Clearwater Sun Property	CLEARWATER	PINELLAS	Southwest	9/17/2003	1/18/2007	C	1
BF160001000	BF160001004	ERIC_8535	Ford Assembly Redevelopment	JACKSONVILLE	DUVAL	Northeast	9/17/2003			23
BF179901000	BF179901002	ERIC_6082	2500 North Palafox Street	PENSACOLA	ESCAMBIA	Northwest	7/25/2003	2/29/2012	C	0.75
BF060201000	BF060201001	ERIC_17871	McArthur Dairy Brownfield Site	LAUDERHILL	BROWARD	Southeast	6/11/2003	7/28/2016	U	10.35
BF290101000	BF290101003	ERIC_13821	Tampa Bay Scrap Processors Site	TAMPA	HILLSBOROUGH	Southwest	5/9/2003	6/30/2025	C	16
BF160001000	BF160001003	ERIC_14520	2100 Dennis Street Remediation Trust	JACKSONVILLE	DUVAL	Northeast	5/1/2003			1
BF130201000	BF130201001	ERIC_17873	Biscayne Commons Brownfields Site	NORTH MIAMI	MIAMI-DADE	Southeast	4/7/2003			12
BF160205000	BF160205001	ERIC_17964	4502 Sunbeam Road	JACKSONVILLE	DUVAL	Northeast	3/13/2003			225
BF230201000	BF230201001	ERIC_6712	Former-St. Joe Site Surface Impoundment	PORT ST JOE	GULF	Northwest	1/28/2003	7/9/2010	C	11
BF230201000	BF230201002	ERIC_6713	Former-Port St. Joe Kraft Papermill	PORT ST JOE	GULF	Northwest	1/27/2003	5/15/2013	C	125
BF160001000	BF160001002	ERIC_14472	The Shipyards	JACKSONVILLE	DUVAL	Northeast	12/31/2002			40.55

\* PRFBRS chose to voluntarily terminate BSRA

\*\* Please note, BSRA BF00101004 superseded by BF500101005 and BF00101006

^ BSRA revoked for failure to comply.

^^ Property ownership change. BSRA terminated.

~ SRCO withdrawn

7/1/2025

Area ID	Site ID	ERIC ID	Site Name	City	County	District	BSRA Date	SRCO Date	Closure	Acreage
BF160201000	BF160201001	ERIC_14602	St. Johns Center Site	JACKSONVILLE	DUVAL	Northeast	12/31/2002			4
BF090201000	BF090201001	ERIC_6876	Inverness Wal-Mart Site	INVERNESS	CITRUS	Southwest	12/23/2002	10/21/2015	C	40
BF010001000	BF010001002	ERIC_8537	Former-CSX Property	GAINESVILLE	ALACHUA	Northeast	11/14/2002			25
BF290202000	BF290202001	ERIC_13808	Wal-Mart Gunn Highway Site	TAMPA	HILLSBOROUGH	Southwest	11/7/2002	6/12/2009	U	28
BF530001000	BF530001001	ERIC_6996	Auburndale Wal-Mart	AUBURNDALE	POLK	Southwest	11/7/2002	11/12/2013	C	10
BF290101000	BF290101002	ERIC_13802	Tampa Bay Shipbuilding and Repair Company	TAMPA	HILLSBOROUGH	Southwest	7/31/2002			53
BF429903000	BF429903001	ERIC_11055	Former White's Meats Packing Facility	OCALA	MARION	Central	7/26/2002	10/23/2006	U	6
BF290002000	BF290002002	ERIC_7380	CSX Spur at Old Hopewell Road	TAMPA	HILLSBOROUGH	Southwest	7/22/2002	3/18/2019	C	1
BF500101000	BF500101003	ERIC_10691	CFC Multifamily Northwest	WEST PALM BEACH	PALM BEACH	Southeast	7/8/2002			45
BF500101000	BF500101002	ERIC_7178	DR Lakes Multifamily Northside	WEST PALM BEACH	PALM BEACH	Southeast	7/8/2002	6/29/2015	C	13
BF160001000	BF160001001	ERIC_17851	Ware Family Realty, LLC	JACKSONVILLE	DUVAL	Northeast	6/3/2002	12/8/2003	U	1
BF290202000	BF290202001A	ERIC_13831	Wal-Mart Buckley-Shuler Parcel A	TAMPA	HILLSBOROUGH	Southwest	4/22/2002	5/15/2002	U	1
BF290202000	BF290202001B	ERIC_13832	Wal-Mart Buckley-Shuler Parcel B	TAMPA	HILLSBOROUGH	Southwest	4/22/2002	6/4/2002	U	1
BF290202000	BF290202001C	ERIC_13833	Wal-Mart Buckley-Shuler Parcel C	TAMPA	HILLSBOROUGH	Southwest	4/22/2002	11/23/2004	U	2
BF290202000	BF290202001D	ERIC_13834	Wal-Mart Buckley-Shuler Parcel D	TAMPA	HILLSBOROUGH	Southwest	4/22/2002	12/16/2002	U	2
BF290202000	BF290202001E	ERIC_13835	Wal-Mart Buckley-Shuler Parcel E	TAMPA	HILLSBOROUGH	Southwest	4/22/2002	7/22/2002	U	2
BF500101000	BF500101001	ERIC_7177	BrandsMart	WEST PALM BEACH	PALM BEACH	Southeast	12/27/2001	3/1/2016	C	17
BF290101000	BF290101001	ERIC_13783	Port Ybor	TAMPA	HILLSBOROUGH	Southwest	10/29/2001	10/10/2022	C	59
BF179901000	BF179901001	ERIC_6751	Weatherford McIntyre Property	PENSACOLA	ESCAMBIA	Northwest	10/3/2001	7/1/2002	C	3
BF160101000	BF160101001	ERIC_6769	Southside Generating Station (SGS) Area	JACKSONVILLE	DUVAL	Northeast	8/1/2001	8/17/2017	C	42
BF529701000	BF529701002	ERIC_7207	Dimmit Parcel B	CLEARWATER	PINELLAS	Southwest	7/31/2001	12/18/2009	U	3
BF170101000	BF170101001	ERIC_6753	Strategic Crossing Corp. CSX Property	PENSACOLA	ESCAMBIA	Northwest	6/7/2001	12/15/2006	C	1
BF369901000	BF369901001	ERIC_6890	City of Ft Myers Coal Gasification Site	FORT MYERS	LEE	South	3/9/2001	1/3/2011	C	7
BF010001000	BF010001001	ERIC_10975	Gainesville Regional Utilities/Poole Roofing Site	GAINESVILLE	ALACHUA	Northeast	1/29/2001			2
BF130001000	BF130001001	ERIC_7258	Potamkin Properties	MIAMI BEACH	MIAMI-DADE	Southeast	12/29/2000	3/14/2012	C	7
BF290002000	BF290002001	ERIC_13812	WRB @ Old Hopewell Road	TAMPA	HILLSBOROUGH	Southwest	12/28/2000			10
BF050001000	BF050001001	ERIC_12362	Village Green Shopping Center	ROCKLEDGE	BREVARD	Central	12/22/2000	2/24/2021	C	10
BF290001000	BF290001001	ERIC_14022	Robbins Manufacturing	TAMPA	HILLSBOROUGH	Southwest	8/28/2000	8/14/2002	C	40
BF529701000	BF529701001	ERIC_9914	Community Health Center	CLEARWATER	PINELLAS	Southwest	1/18/2000	7/28/2000	U	1
BF489901000	BF489901001	ERIC_12655	Sunterra Site	ORLANDO	ORANGE	Central	6/29/1999	11/5/1999	U	14

\* PRFBRS chose to voluntarily terminate BSRA

\*\* Please note, BSRA BF00101004 superseded by BF500101005 and BF00101006

^ BSRA revoked for failure to comply.

^^ Property ownership change. BSRA terminated.

~ SRCO withdrawn

## **APPENDIX C**

### **Brownfields Redevelopment Success Stories**

## **Florida Brownfields Success Stories**

### **Brownfield Success Stories**

The success of the Florida Brownfields Redevelopment Program can be demonstrated by the completed projects—those that have gone through cleanup and reuse of previously underutilized properties and/or those that have achieved NFA status. The projects highlighted below have achieved NFA status and have been issued SRCOs between the period of July 1, 2024, through June 30, 2025. Cleanup was completed in accordance with DEP’s Contaminated Site Cleanup Criteria rule (Chapter 62-780, F.A.C.). Full summaries of historical success stories can be found on the [DEP website](#).

### **Closure Success — Completed Projects**

#### **Port Redwing Access Outparcel**

**Location:** Gibsonton, Hillsborough County  
**Historical Use:** Former Hanson Pipe & Precast  
**Contaminants:** Petroleum and arsenic  
**Reuse:** Industrial



This Brownfield site is owned by Port Tampa Bay (PTB) and leased to a concrete pipe manufacturer. This Brownfield site is part of larger PTB holdings located in the East Bay area. PTB plans to lease much of this land to industries that will use the port’s facilities. Petroleum and arsenic impacts to soils were assessed and controlled and arsenic in groundwater was delineated to meet background concentrations. The site was closed with a CSRCO with institutional soil and groundwater controls on July 16, 2024.



#### **Tampa Livestock/Kracker Road Parcel B**

**Location:** Gibsonton, Hillsborough County  
**Historical Use:** Former Tampa Livestock Distribution Dump  
**Contaminants:** Arsenic  
**Reuse:** Undetermined

The undeveloped Parcel B Brownfield site received stormwater drainage from adjacent properties. Soil and groundwater arsenic impacts were delineated on the property. The site has institutional controls for soil and groundwater. A CSRCO was issued July 23, 2024. Port Tampa Bay is looking for a tenant to redevelop this site.

### Channelside Holdings, LLC

**Location:** Tampa, Hillsborough County  
**Historical Use:** Paint manufacturer  
**Contaminants:** Metals, petroleum, polyaromatic hydrocarbons, and paint compounds  
**Reuse:** Industrial/commercial



The Channelside Holdings Brownfield site was previously operated as a paint manufacturer that used an unlined pond for waste paint disposal. The eastern part of the site appears to have been part of the former Spicola Landfill and various types of debris are present in the soils at the site. Metals, petroleum, PAH and paint compounds were detected in soils and groundwater. The site closed with a CSRCO on July 26, 2024. Engineering controls are present over site soils and institutional control prevents groundwater use. Three businesses operate on the eastern portion of the site for wastewater transfer, soil & mulch distribution and warehouse services. The western portion of the site is vacant and the property is currently for sale. This area is rapidly redeveloping, and it is anticipated that a reuse plan will be proposed by a new owner in the near future.



### Mobility Scooter Center, Inc.

**Location:** Melbourne, Brevard County  
**Historical Use:** Fuel service station  
**Contaminants:** Petroleum and waste oil  
**Reuse:** Medical retail and service store

The site is the location of a former fuel service station that operated from approximately 1962 through 1987. The service station had two fuel dispenser islands and underground storage tanks that stored gasoline and waste oil. The discharge at the site was associated

with the historical operation of the petroleum storage system at the former service station. A biosparge system was operated at the site followed by post-active remediation monitoring of groundwater conditions. A SRCO was issued on Aug. 22, 2024.

## Northside Commons

**Location:** Unincorporated Miami Dade County  
**Historical Use:** Service station  
**Contaminants:** Petroleum, PAH  
**Reuse:** Affordable housing

A BSRA was executed with Northside Commons Residential, LLC for the Northside Commons Brownfield Site. A portion of the site was a service station from 1956 to the 1970s, and the site had a petroleum discharge dated May 9, 1995, which received a Site Rehabilitation Completion Order on Dec. 11, 2017. Aluminum recycling activities also historically occurred on site.



Site assessment indicated PAH groundwater contamination on the eastern portion of the property, which is suspected to be residual contamination from the historic petroleum discharge. A groundwater Monitoring Only Plan in pursuit of No Further Action with Conditions (NFAC) was implemented and completed and a declaration of restrictive covenant was executed with groundwater use restrictions. The site was issued a CSRCO on Aug. 30, 2024. The Northside Commons development was completed in 2021 as an affordable housing development, consisting of 80 apartments, serving residents with disabling conditions. The development comprises 56 units for adults in need of supportive care for disabilities or mental illness and 24 units of median income apartments. The completed development has a broad range of on-site supportive services and resident programs, and also includes a covered parking garage, an exercise room, computer room, library and a community meeting room.



## First Class Auto Sales

**Location:** Orlando, Orange County  
**Historical Use:** Service station/car sales  
**Contaminants:** Petroleum (BETX)  
**Reuse:** Convenience store

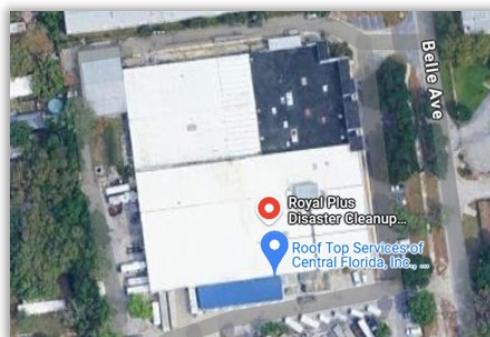
In 2013, prior to the cleanup, the site was developed with a free-standing, concrete masonry unit, one-story auto sales building, a steel canopy and adjoining asphalt and concrete parking areas. The site was recently occupied by First Class Auto Sales (aka Deals on Wheels) pre-owned auto sales.

The initial Site Assessment was submitted in June of 2013. In 2013 two 16-hour rounds of Multi-phase Extraction (MPE) were performed to recover vapor and groundwater, approximately 30

days apart. This was followed by soil/source removal. In 2014 chemical oxidation injections were conducted to address groundwater contamination followed by groundwater monitoring. The site received a CSRCO on Nov. 26, 2024, utilizing an Institutional Control (groundwater restrictions).

### Former Microvia Facility

**Location:** Casselberry, Seminole County  
**Historical Use:** Electronic manufacturing  
**Contaminants:** Chlorinated solvents and metals  
**Reuse:** Commercial



The facility manufactured electronic components, such as printed wiring boards (PWBs), for several electronic firms. Major manufacturing operations included drilling, plating, etching, routing, finishing and packaging of PWBs. Industrial wastewater was generated from the process and was regulated as a metal finishing wastewater by federal, state and local regulatory agencies. Natural Attenuation Monitoring of groundwater conditions was conducted at the site for approximately 15 years. A CSRCO was issued on Dec. 10, 2024. In 2011, the property was sold and is currently occupied by a company that offers cleanup and restoration services to business and property owners impacted by natural or man-made disasters. Another business also occupies the northeast portion of the former Microvia facility and provides roofing installation and repair services for commercial and residential properties.



### Former M&M Auto Recycling

**Location:** Sanford, Seminole County  
**Historical Use:** Scrapyard  
**Contaminants:** Volatiles, Semi-volatiles, metals and petroleum products  
**Reuse:** Salvage/recycling facility

Investigations of environmental conditions at the site began in 1990 and consisted of soil and groundwater investigations. In 2012 soil excavations were performed along with the use of an air stripper to treat the groundwater during dewatering. Air sparging was also conducted on the open pit.

A Brownfields Site Rehabilitation Agreement (BSRA) was executed for the property in December 2012. Remedial Action was conducted that consisted of surface concrete removal, dewatering, soil excavation and disposal and open pit water sparging. This was followed by Post Active Remediation Groundwater Monitoring. A third round of Interim Source Removal was conducted in 2022 before closure approval was obtained in 2023. The site was closed with Institutional Controls under a CRSCO on Dec. 13, 2024.

## Block 48

**Location:** Jacksonville, Duval County

**Historical Use:** dry cleaners, fuel storage, vehicle maintenance and repair facilities

**Contaminants:** arsenic, lead, chlorinated solvents

**Reuse:** Corporate offices, parking garage, retail and urban open space

The Block 48, Jacksonville Harts Area Brownfield Site (Site) is a 1.52-acre parcel comprising an entire city block in the Central Civic Core District of Downtown Jacksonville. The City of Jacksonville (COJ) sold the site, which had been vacant since 2003, to Ryan Jacksonville, LLC (Ryan) in June 2020 to construct a new headquarters office building with an accessory parking garage for JEA, the local electric and water utility company.



Prior to Ryan's acquisition of the site, COJ completed numerous environmental assessments which determined that historic operations on the site resulted in arsenic and lead contamination in the soil and chlorinated solvent contamination in the groundwater. Specifically, Phase I environmental site assessments of the site reported former uses on or near the site that included multiple dry cleaners, fuel storage in multiple underground storage tanks and multiple vehicle maintenance and repair facilities. In May 2017, the department required COJ to perform site assessment activities at the site pursuant to Chapter 62-780, F.A.C. A Feb. 5, 2018, Site Assessment Report and April 5, 2019, Supplemental Site Assessment Report, submitted by the City to DEP, documented the presence of lead and arsenic in soil at concentrations which exceeded their residential soil cleanup target levels and contamination of groundwater in the vicinity of the site resulting from a historic release of chlorinated solvents from former onsite dry-cleaning operations.

Prior to acquiring the site, Ryan submitted a Remedial Action Plan on Oct. 30, 2019, outlining subsurface injections of liquid activated carbon, zero-valent iron and hydrogen release compound to stimulate in-situ reduction of chlorinated solvents. Following active remediation, Ryan conducted four quarters post-active remediation groundwater monitoring from January 2020 to December 2020.

Ryan began developing the site in 2021. During development activities, any impacted soils that were excavated were properly managed onsite. Unbeknownst to Ryan, portions of the structure once located on the site had been buried in the basement of that building. That construction and demolition debris contained asbestos which required additional handling and disposal measures. Furthermore, Ryan identified nine (9) historic underground storage tanks at the site. Removal and proper disposal of the asbestos-containing material and underground storage tanks presented previously unknown development costs to the project.

Upon completion of the new building's foundation, Ryan submitted an Oct. 5, 2021, Remedial Action Plan Modification which proposed additional in-situ treatment of groundwater impacts. Following four quarters of post-active remediation monitoring of groundwater, Ryan proposed, and DEP accepted a no further action request based on Risk Management Option III closure pursuant to 62-780.680(3), F.A.C. Groundwater monitoring demonstrated that chlorinated solvent concentrations in groundwater indicated a stable or shrinking plume in the southwest corner of the Site. Those groundwater impacts extend from the site into the city-owned rights-of-way known as North Pearl and Adams Streets. Declarations of restrictive covenant were recorded against the (i) site to eliminate exposure to remnant environmental impacts in soil and groundwater through the implementation of institutional and engineering controls and (ii) COJ-owned rights-of-way to eliminate potential exposure to impacted groundwater. DEP issued a Conditional Site Rehabilitation Order for the Site on Feb. 25, 2025.

Upon completion of the development, JEA relocated its corporate offices to the Site in April 2023. The JEA headquarters is a seven-story building consisting of approximately 162,000 square feet of office space, a 657-space garage and 10,690 square feet of ground floor retail. The building achieved Gold Level Leadership in Energy & Environmental Design (LEED) certification. The site also includes 4,300 square feet of urban open space with the majority along West Monroe Street, between the office building and garage.

### Madison Terrace

**Location:** Lake Worth, Palm Beach County

**Historical Use:** Service station/car sales

**Contaminants:** PAHs

**Reuse:** Affordable housing

The site comprises five contiguous tax parcels totaling 1.62 acres. The property includes a mixture of land uses: three vacant lots, one single-family residential lot and one commercial lot currently occupied by G. Motors, an auto sales and light repair business. With a history of automotive-related use dating back to the 1920s, including a former gas station and auto dealership, the property experienced long-term, unregulated activities that contributed to environmental impacts. In March 2024, a discharge of PAHs, linked to historical site uses and improper hazardous waste handling, was discovered. To address the contamination and support the planned redevelopment into two affordable housing multi-family units, a BSRA was executed in 2024.



In the fall of 2024, a Site Assessment and Remedial Action Proposal was submitted to the department which summarized assessment actions taken on the site and the proposal for source removal of various PAH hotspots. The remedial action, which comprised of excavation of PAH-

impacted soil, was completed on the site in early 2025 and detailed the successful removal of the contamination.

A SRCO was issued on May 29, 2025, confirming that all PAH levels had been successfully reduced below the applicable Cleanup Target Levels



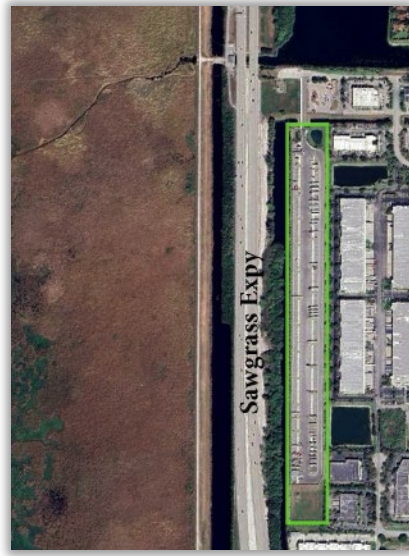
### Rome Yard

**Location:** Tampa, Hillsborough County  
**Historical Use:** City of Tampa Water & Sewer Fleet Maintenance  
**Contaminants:** Arsenic, Benzo(a)Pyrene Equivalents, TRPH  
**Reuse:** Planned Community



This Brownfield site was previously used by the City of Tampa Water & Sewer for fleet maintenance. Two petroleum discharges were cleaned up through the Petroleum Restoration Cleanup Program at the property, and a Brownfield investigation found arsenic and petroleum impacts in the soil.

Impacted soils were removed and properly disposed of offsite. No groundwater impacts were found, and the site received a SRCO on June 3, 2025. The Brownfield property is currently under construction for a large residential planned community with a mix of affordable housing and market rate units, as well as space for retail, services and recreation with open green space. The Riverwalk Trail goes through this development.



## Coral Springs Economic Revitalization Zone Two

**Location:** Coral Springs, Broward County

**Historical Use:** Landfill

**Contaminants:** VOCs

**Reuse:** Storage facility

This site is located in Coral Springs near the Sawgrass Expressway and is situated on a closed landfill formerly operated by the City of Coral Springs. Initial redevelopment proposals presented unique challenges including the property's significant elevation above grade from historical filling, relative narrowness of its configuration, and the fact that it was landlocked. However, through collaborative efforts with the City of Coral Springs, the developers obtained access through city-owned property onto a major arterial roadway. Utilizing key planning and brownfield-related land use incentives, the site was developed into an economically viable storage space featuring 369 trailer parking spaces, an on-site guardhouse, communal restrooms, and is conveniently located within a 400-acre corporate park with immediate access to the Sawgrass Expressway.

The BSRA for the Coral Springs Economic Revitalization Zone Two was executed on June 12, 2019, by Sawgrass Development Partners, LLC ("Sawgrass"), which allowed Sawgrass to relieve the City of ongoing cleanup costs and accelerate the timeframe for obtaining regulatory closure. The SRCO was issued on Dec. 19, 2019. The property had been acquired by Sawgrass in 2018 for \$1.2 million. Following completion of rehabilitation and redevelopment, the property sold in 2024 for \$34.1 million. Through the VCTC Program, approximately \$47,897 in corporate income tax credits were awarded to offset rehabilitation costs.