



St. Lucie River and Estuary Basin Management Action Plan (BMAP) Update Technical Meeting

**Nov. 19, 2024 at 9 a.m. EST
Palm City Community Center
2701 SW Cornell Ave.
Palm City, FL 34990**

Agenda

- Department of Environmental Protection BMAP Presentation
- South Florida Water Management District Presentation
- Florida Department of Agriculture and Consumer Services Presentation
- Poster Session/Open Discussion
- Conclusion

Please note the FTP site for documents pertaining to the various BMAPs:

<http://publicfiles.dep.state.fl.us/DEAR/BMAP/>

For more information, contact: Diana Turner, 850-245-8825, Diana.M.Turner@FloridaDEP.gov

ST. LUCIE RIVER AND ESTUARY BASIN MANAGEMENT ACTION PLAN (BMAP) UPDATE TECHNICAL MEETING



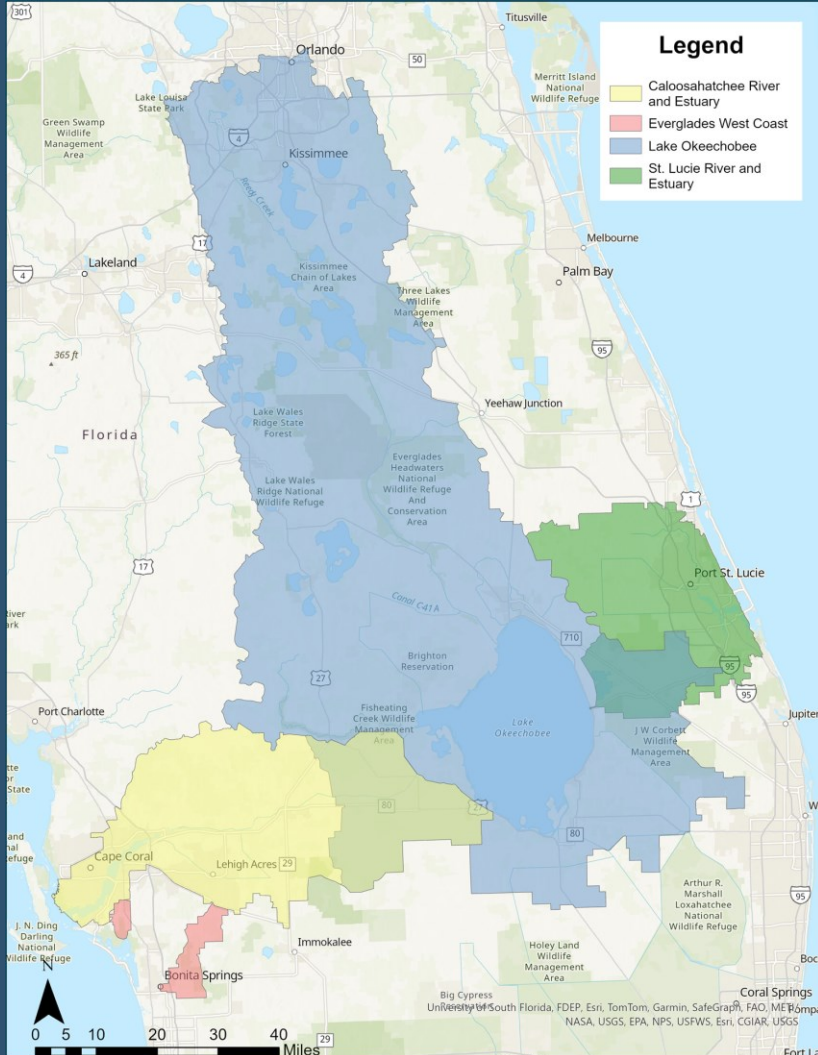
Diana Turner

Division of Environmental Assessment and Restoration
Florida Department of Environmental Protection

Palm City, FL | Nov. 19, 2024



BMAP UPDATE MEETING



Source: SFWMD



Source: SFWMD



Source: SFWMD

Agenda:

- Logistics.
- Basin Management Action Plan (BMAP) Update Highlights.
- South Florida Water Management District (SFWMD) Watershed Protection Plans Highlights.
- Florida Department of Agriculture and Consumer Services (DACS) Update.
- Poster Session.



BMAP UPDATE COMPONENTS

- Recent legislative requirements:
 - Clean Waterways Act (2020).
 - Wastewater effluent limits changes.
 - Onsite Sewage and Treatment Disposal System (OSTDS) requirements for new systems on lots 1 acre or less.
- List of identified projects to meet five-year milestones.
- Regional projects.
- Hot spot analysis.
- Additional water quality analyses.
- Additional updates needed to the monitoring network.
- Recommendations from the Five-Year Review.





LAKE OKEECHOBEE 2024 FIVE-YEAR REVIEW



Source: SFWMD

- The Northern Everglades and Estuaries Protection Plan BMAPs (St. Lucie, Caloosahatchee and Lake Okeechobee) are required to provide a review every five years on the progress the BMAP is making (paragraph 373.4595(4)(d), Florida Statutes).
- Comments on the draft document due by Nov. 22, 2024.



UPCOMING SCHEDULE

Aug. 1, Final wastewater treatment plans and OSTDS remediation plans due.

Nov. 18, Second Annual NEEPP Public Workshop.

Nov. 19 - 21, Technical BMAP update public meetings.

Jan. 2025, Draft BMAP update public meetings.

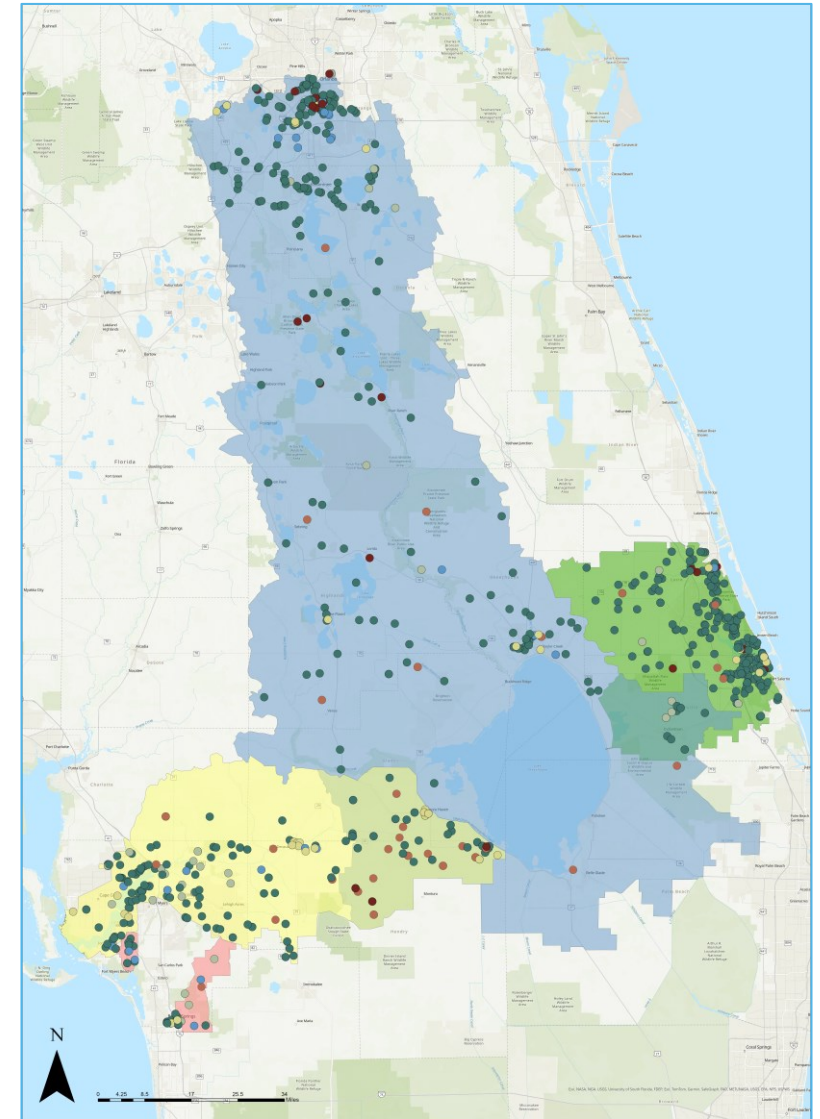
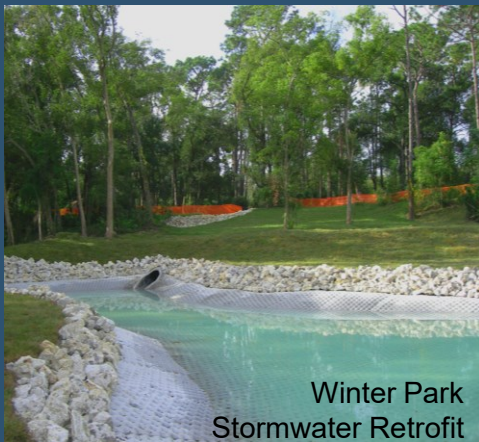
Jan./Feb. 2025, Draft BMAP update comment period.

July 1, 2025, Statutory deadline for updated nutrient BMAPs.



PROJECT PORTAL IS OPEN

- Portal will remain open through mid-January 2025 for annual reporting.
- Updates to existing projects and any newly input planned projects needed to reach next milestone have been submitted and are being compiled.



THANK YOU



Diana Turner

Division of Environmental
Assessment and Restoration

Contact Information:
850-245-8825

Diana.M.Turner@FloridaDEP.gov

Anthony Tomalewski

St. Lucie River and Estuary
Basin Coordinator

Contact Information:
850-245-8683

Anthony.Tomalewski@FloridaDEP.gov

SFWMD Update

2025 St. Lucie River Watershed Protection Plan (WPP) Update

Megan Jacoby, Bureau Chief

Everglades & Estuaries Protection Bureau

St. Lucie River and Estuary BMAP Meeting – Palm City

November 19, 2024

2025 St. Lucie River Watershed Protection Plan Update – *5-Year Update*

- Since 2020, SFWMD completed annual St. Lucie River Watershed Construction Project (CRWCP) reviews, as part of the Watershed Protection Plan (WPP) reviews
- Annual reviews are important to:
 - Maintain transparency and accountability in BMAP process
 - Assist to progressively move toward achieving state's TMDLs
 - Consolidate into NEEPP annual progress reporting (South Florida Environmental Report, or SFER) per §373.4595(6), F.S.
 - ***Develop and update WPPs required every five years***
- Draft 2025 SLRWPP Update (5-Year Update)
 - Project accomplishments through Fiscal Year (FY) 2024 (Oct. 1, 2023–Sept. 30, 2024); data evaluation/key findings through Water Year (WY) 2024 (May 1, 2023–April 30, 2024)
 - Draft 2025 SFER – Volume I, Chapter 8C (available at [SFWMD.gov/SFER](https://www.sfwmd.gov/SFER))

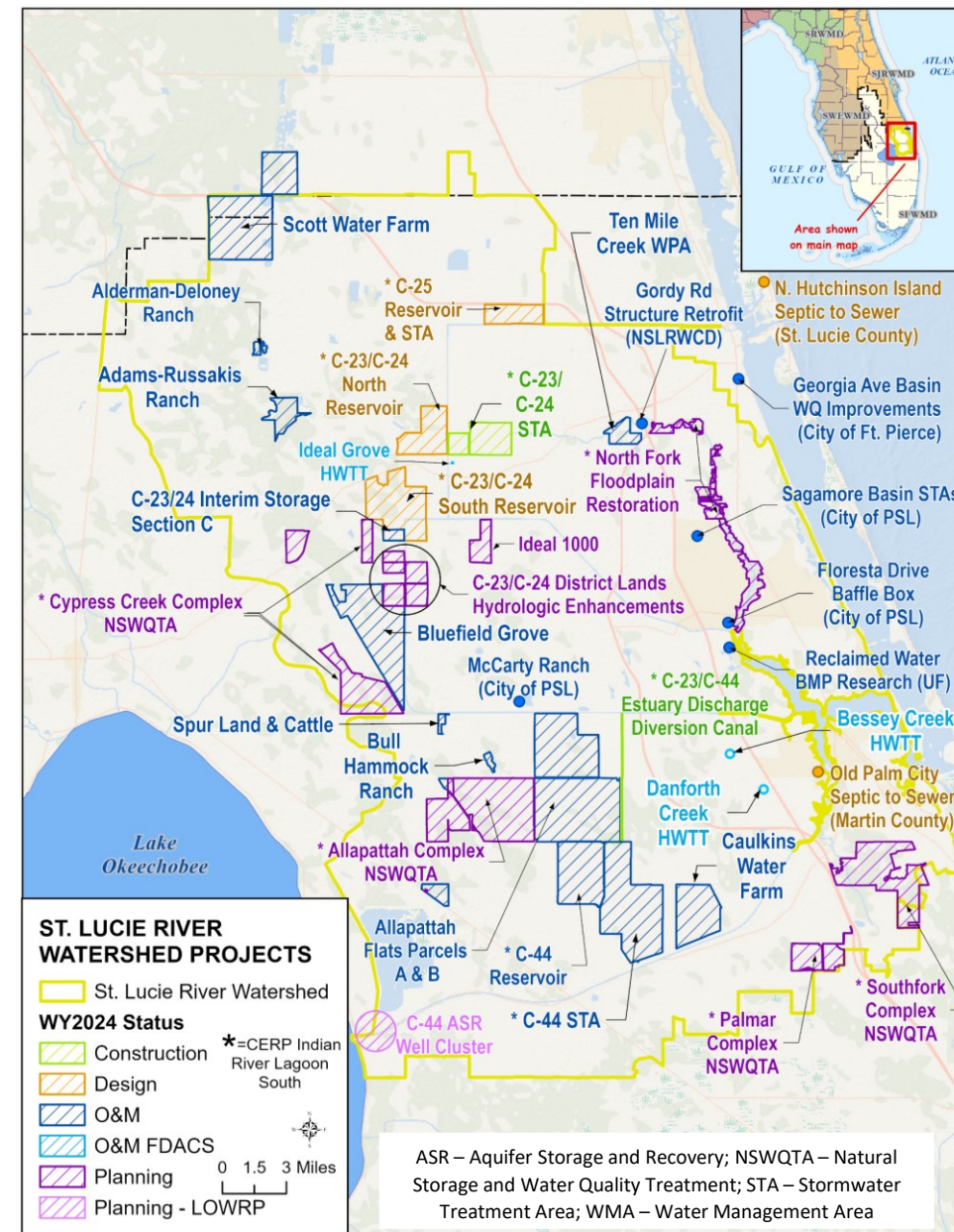
SFWMD Projects

➤ 2024 SLRWCP Status:

- 10 projects – planning/design
- 2 projects – construction
- 11 projects – operations



Caulkins Water Farm Project, Martin County



Water Storage Benefits

- Key DWM program benefits:
 - Reduces runoff/discharge to and stores/treats water in regional system
 - Promotes hydrologic enhancement, groundwater recharge, improves habitat
 - Avoids high cost of land purchase and keeps private lands on local tax rolls
 - Storage and/or treatment provided typically exceeds permit requirements
- In WY2024, 10 SFWMD-led operational projects provided 103,694 ac-ft of storage*
- Future projects are planned to add storage capacity of more than 122,000 ac-ft over the next five years

Increasing Project Storage Capacity in the St. Lucie River Watershed



- 1 ALDERMAN-DELONEY RANCH
ADAMS-RUSSAKIS RANCH
- 2 BULL HAMMOCK RANCH
SPUR LAND & CATTLE
- 3 CAULKINS WATER FARM
TEN MILE CREEK WPA
- 4 C-23/C-24 INTERIM SECTION C
- 5 ALLAPATTAH PARCELS A & B
- 6 BLUEFIELD GROVE
SCOTT WATER FARM
- 7 IDEAL 1000
- 8 C-23 ESTUARY DISCHARGE
DIVERSION CANAL
- 9 C-44 RESERVOIR & STA

NEEPP Model Update

- Original 2008/2009 storage targets for Northern Everglades watersheds have been confirmed to meet the NEEPP legislative goals
 - SLRW storage target = 200,000 acre-feet per year
- **New! 2025 NEEPP Regional Simulation Model Update**
 - Evaluated hydrology using the Regional Simulation Model for Basins (RSMBN)
 - Current, future, and additional conceptual projects were evaluated for hydrologic performance across all three Northern Everglades watersheds
 - SFWMD is making progress toward the NEEPP storage goals—both realized and planned
- **Now Underway: 2025 Update Reviews**
 - Model overview poster today
 - Draft modeling results presented at upcoming NEEPP Public Workshop
 - Draft 2025 SFER – Volume I, Appendix 8A-1 for public review ([SFWMD.gov/SFER](https://www.sfwmd.gov/SFER))

Mark Your Calendars!



St. Lucie River at US-1 Bridge

AVAILABLE NOW

2025 SLRWPP Update

Draft 2025 SFER – Volume I, Chapter 8C

Web Release Date: November 12, 2024

Public Comment Period: through December 17, 2024

For more information, visit:

[SFWMD.gov/SFER](https://www.sfwmd.gov/SFER)



sfwmd.gov

Contact Information

Megan Jacoby, Bureau Chief

Everglades & Estuaries Protection Bureau
South Florida Water Management District

mjacoby@sfwmd.gov; 561-682-6517



sfwmd.gov

St. Lucie River and Estuary BMAP Public Meeting

November 19, 2024

**Florida Department of Agriculture and Consumer Services
Office of Agricultural Water Policy**

Jennifer Thera



Office of Agricultural Water Policy (OAWP)

- **West Gregory**; Director West.Gregory@FDACS.gov
- **J.P. Fraites**; Asst. Director John.Fraites@FDACS.gov
- **Bret Prater**; Asst. Director Bret.Prater@FDACS.gov
- **Angela Chelette**; Chief of Policy Planning and Coordination Angela.Chelette@FDACS.gov
- **Yesenia Escribano**; Chief of Policy Planning and Coordination Yesenia.Escribano@fdacs.gov
- **Steve Smith**; Chief of Field Services Steve.Smith@FDACS.gov



OAWP Staff

- **Maddy Hart**; Environmental Administrator - Madeline.Hart@fdacs.gov
- **Jennifer Thera**; Environmental Consultant-PPC Jennifer.Thera@fdacs.gov
- **Rebecca Elliott**; Environmental Consultant-PPC Rebecca.Elliott@fdacs.gov
- **Matt Warren**; Environmental Administrator-Field Services Matt.Warren@fdacs.gov
- **Vacant**; Environmental Manager-Field Services
- **Sheila Kitaif**; Environmental Manager-Field Services Sheila.Kitaif@fdacs.gov
- **Jessica Ferris**; Regional Project Coordinator Jessica.Ferris@fdacs.gov



Best Management Practices (BMP) Manual Updates

<https://www.fdacs.gov/Divisions-Offices/Agricultural-Water-Policy/Rule-Development-Activities>

Home / Divisions & Offices / Agricultural Water Policy / Rule Development Activities

Office of Agricultural Water Policy's Rule Development Activities

Learn about recent rule development activities for Chapter 5M, Florida Administrative Code.

5M-1 Rulemaking Division of Agricultural Water Policy	5M-6 Rulemaking Best Management Practices for Florida Nursery Operations	5M-8 Rulemaking Best Management Practices for Florida Vegetable and Agronomic Crop Operations	5M-9 Rulemaking Best Management Practices for Florida Sod
5M-11 Rulemaking Best Management Practices for Florida Cattle Operations	5M-13 Rulemaking Best Management Practices for Florida Specialty Fruit & Nut	5M-14 Rulemaking Best Management Practices for Florida Equine Operations	5M-16 Rulemaking Best Management Practices for Florida Citrus
5M-17 Rulemaking Best Management Practices for Florida Dairy Operations	5M-19 Rulemaking Best Management Practices for Florida Poultry	5M-20 Rulemaking Soil and Water Conservation	5M-21 Rulemaking Best Management Practices for Florida Small Farms and Specialty Livestock Operations



Cost Share

BMP Cost Share Program



The Florida Department of Agriculture and Consumer Services' (FDACS) Office of Agricultural Water Policy (OAWP) administers the Best Management Practices (BMP) Cost Share Program to assist eligible producers or landowners with BMPs. Project funding is on a continuous basis until program funds are fully encumbered.

OAWP will prioritize awarding first-time participants in the BMP Cost Share Program and projects that will result in the highest level of nutrient reductions to help achieve basin management action plan (BMAP) goals and conservation of water use. Funding will be based on the submittal of the necessary information on the funding request. Completed requests will be reviewed in the order in which they are received. Review of each cost share funding request will be conducted by FDACS. Additional information from the producer, including a site visit, may be requested by FDACS before a funding decision is made.

FDACS will review completed requests based on the following minimum criteria:

1. Confirmation of producer eligibility.
2. Prioritization of projects taking place in a BMAP.
3. Confirmation that the project type is on the [approved list](#), to be used for implementing a checklist item, has an adequate relative water quality benefit, and is appropriate for the size of the operation.
4. Justification and consideration of the water quality benefit or water quantity benefit and the relative size and scope of the benefit.
5. Confirmation that the project type is directly linked to the implementation of the producer's manual checklist item.
6. Confirmation that the project type has the necessary precision/technology features.
7. The level of data-reporting commitment from the producer and corresponding cost share percentage.

Producer Eligibility Requirements

When applying, producers must meet the following requirements for their funding request to be considered:

1. The property where the prospective project is located must be in production for at least one year prior to applying (regardless of ownership/lease).
2. The producer must have an active Notice of Intent to Implement Agricultural BMPs (NOI) for the property where the

Project Types Eligible for Cost Share Funding

Project types eligible for cost share funding are provided in the expandable lists below. FDACS will determine the suitability of the project type based on the cost/benefit of the project and the estimated water quality or water quantity benefit compared to the current practice.

- ▶ [Nutrient Management Project Types](#)
- ▶ [Irrigation Management Project Types](#)
- ▶ [Water Resource Protection Project Types](#)

New Project Types

Producers may request an item or project that is not currently on the list by submitting a request that:

1. Identifies the applicable BMP checklist item that will be implemented through the installation of the item or completion of the project.
2. Describes why the new project type is necessary to implement the BMP compared to the producer's current practices.
3. Quantifies the estimated water quality benefit compared to the current practice.
4. Provides justification or proof of the item having a water quality or water quantity benefit (e.g., case studies, research, demonstrations or field tests).

Project types that show potential but do not satisfy the four criteria above may be eligible for funding as "research or demonstration projects" for the purpose of becoming eligible in the future.

How to Request Project Funding or a New Project Type

To request project funding or a new project type, select the following button to create an account and sign into our BMP Cost Share Program portal:

[Request Project Funding](#)

Alternatively, you may download and complete the [Funding Request Form](#) (1.3 MB) and submit it to OAWPCostShare@FDACS.gov. **Please note:** Submitting a form may take more time to process and review.

Important: Do not begin work on a project prior to executing a cost share agreement.

Additional Funding Resources

FDACS works with multiple partners, including the U.S. Department of Agriculture's Natural Resources Conservation Service, the Florida Department of Environmental Protection, water management districts, and soil and water conservation districts, to provide funding to assist producers in implementing Best Management Practices.

<https://www.fdacs.gov/Agriculture-Industry/Water/Agricultural-Best-Management-Practices/BMP-Cost-Share-Program>

On Website

- Producer Eligibility Requirements
- List of Project Types Eligible for Cost Share Funding
- Opportunity to apply for new types
- New Application Portal is active

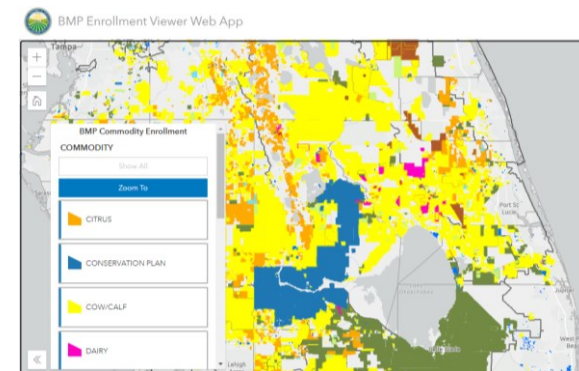


Agricultural Lands in the St. Lucie BMAP

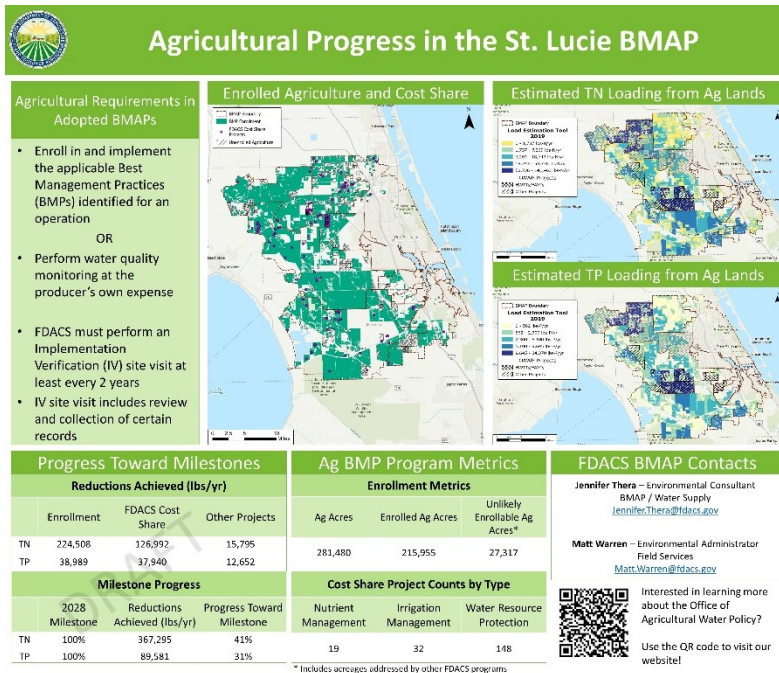
Location	Agricultural acres	Unenrolled - Unlikely Enrollable Acres	Agricultural Acres – Adjusted	Agricultural Acres Enrolled as of April 30, 2024	% Agriculture enrolled in BMP Program
Basin 4 / 5	2,875	99	2,733	1,569	57%
Basin 6	308	103	235	150	64%
C-23	85,745	6,103	77,601	71,097	92%
C-24	61,137	923	55,256	48,018	87%
C-44 / S-153	74,207	7,807	76,936	60,322	78%
North Fork	5,977	2,063	3,122	1,897	61%
South Fork	17,969	1,764	18,379	13,451	73%
Ten Mile Creek	33,233	2,748	28,100	20,392	73%

BMP Enrollment Viewer Web App:

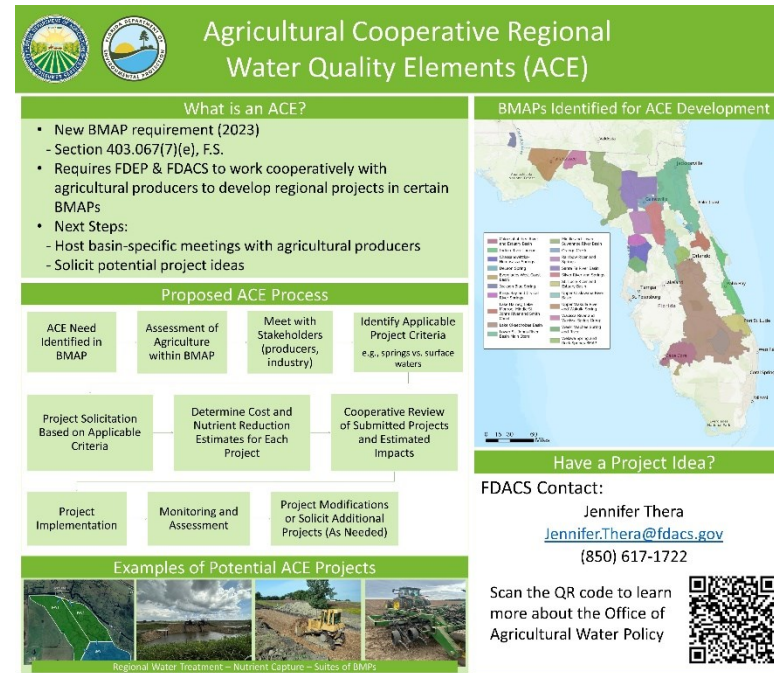
[Office of Agricultural Water Policy: BMP Enrollment Map \(fdacs.gov\)](https://fdacs.gov)



Poster #1 - BMAP Metrics



Poster #2 - Regional Projects/ACE



<http://www.fdacs.gov/Divisions-Offices/Agricultural-Water-Policy>

Thank You!



Florida Department of Agriculture and Consumer Services



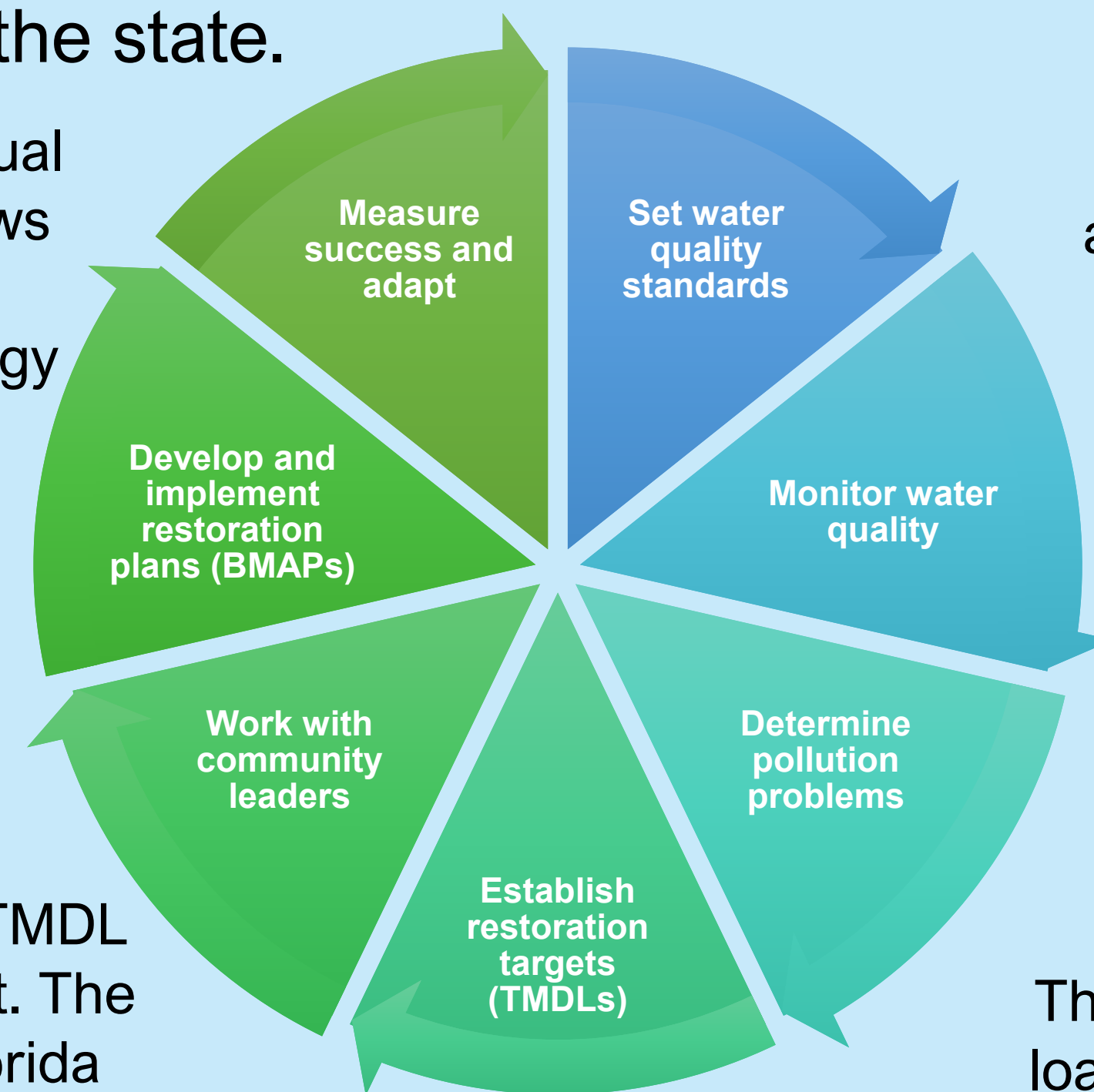
BASIN MANAGEMENT ACTION PLANS (BMAPS)

SOUTH FLORIDA BMAPS

Water Quality Restoration Cycle

The Florida Department of Environmental Protection's (DEP) Division of Environmental Assessment and Restoration (DEAR) monitors and assesses Florida's surface water and groundwater quality across the state.

The Statewide Annual Report (STAR) shows project and management strategy implementation progress made in BMAPs.



DEP and partner agencies maintain and expand water quality monitoring networks.

BMAPs address a TMDL for a given pollutant. The BMAPs in south Florida target nitrogen and phosphorus.

The total maximum daily load (TMDL) is the water quality target

Statutory Requirements

Authority and responsibility comes from several Florida Statutes (F.S.), with some highlights described below:

Florida Watershed Restoration Act (Section 403.067, F.S.)

- Cooperative implementation of plans to restore our waters, known as BMAPs.

Northern Everglades and Estuaries Protection Program (Section 373.4595, F.S.)

- Strengthens provisions for implementing the Lake Okeechobee, Caloosahatchee and St. Lucie BMAPs.
- Clarifies the roles and responsibilities, coordination, implementation and reporting efforts among DEP, Florida Department of Agriculture and Consumer Services (DACS) and South Florida Water Management District (SFWMD).
- Includes five-, 10- and 15-year measurable milestones and targets to achieve the TMDLs addressed by the BMAPs. If achieving the TMDL within 20 years is not practicable, the implementation plan must include an explanation of the constraints that prevent achievement, an estimate of the time needed to achieve the TMDL, and additional five-year measurable milestones.

Clean Waterways Act (2020)

- Promotes resilient wastewater infrastructure and utilities and looks at future growth.
- Requires local governments within a BMAP to develop wastewater treatment plans and/or onsite sewage treatment and disposal system (OSTDS) remediation plans to be incorporated into BMAP updates.

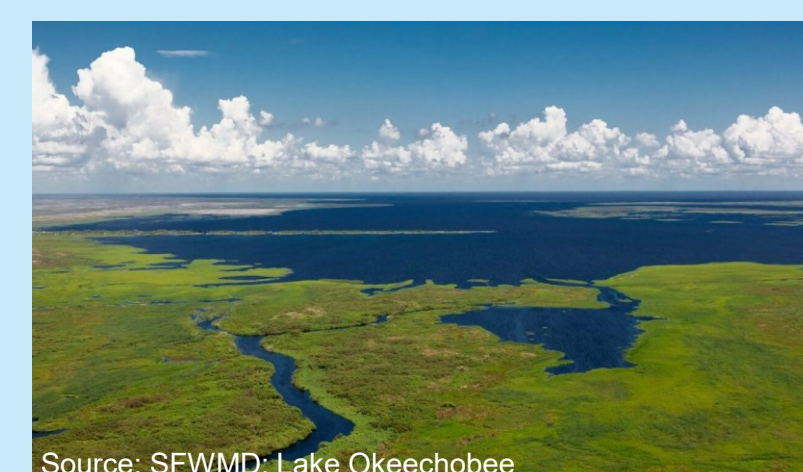
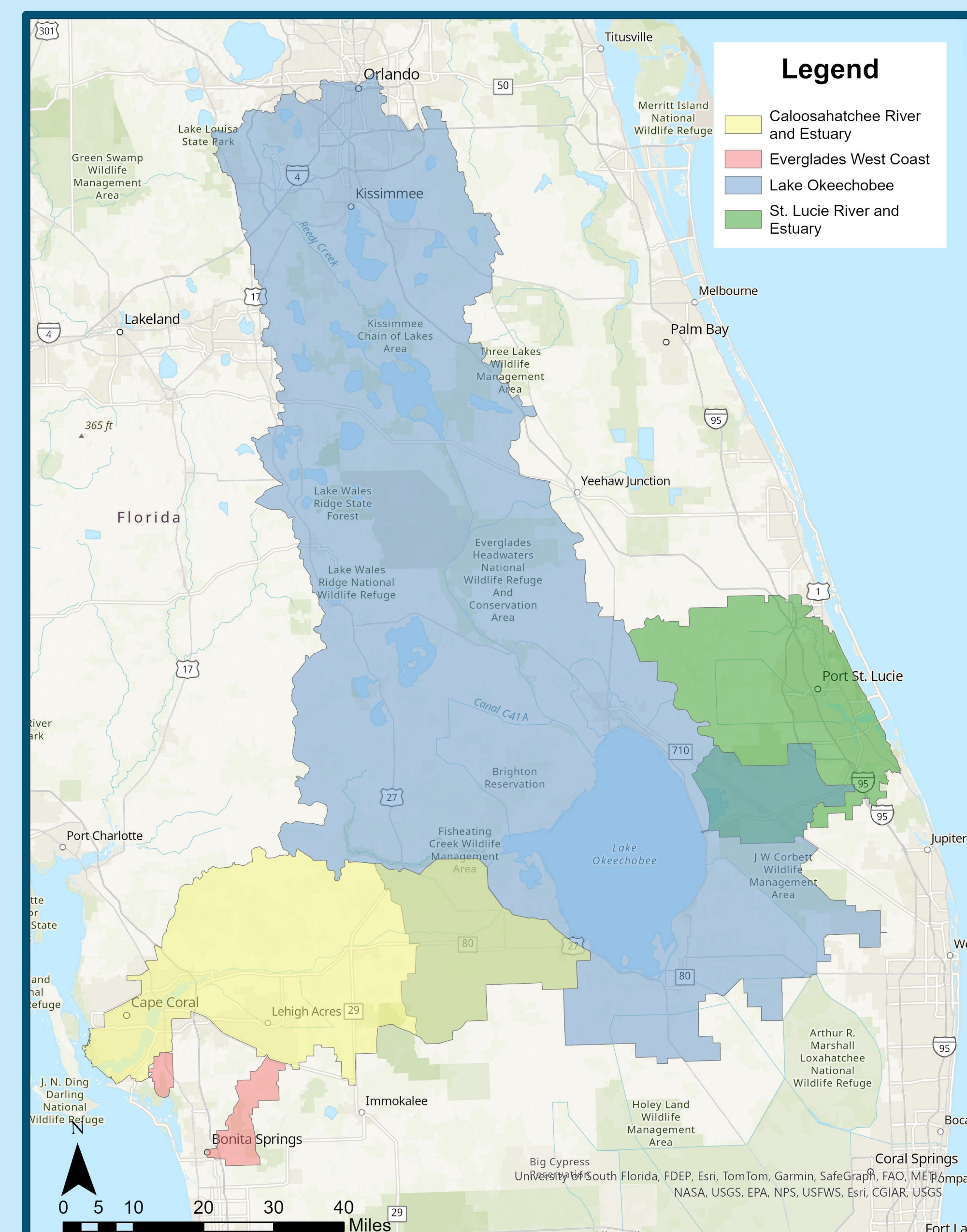
House Bill 1379 (2023)

- Requires BMAPs be assessed and updated every five years as needed to include implementation milestones and other requirements.
- Requires a list of projects and strategies that will achieve the five-year implementation milestones to meet TMDLs, as well as agricultural cooperative regional water quality improvement elements.
- Requires facilities discharging to a waterbody impaired for nutrients or subject to a BMAP or reasonable assurance plan (RAP) area to upgrade to advanced wastewater treatment (AWT) within 10 years.
- Requires applicants for new septic systems serving lots of 1 acre or less within BMAPs and RAPs must connect to central sewer if available, or if unavailable, to install an enhanced nutrient-reducing system or other wastewater system that achieves 65% reduction.
- Requires local governments to include BMAP projects in their comprehensive plans so these projects can be prioritized to achieve restoration benefits.
- Expands grant opportunities to accelerate project implementation.

House Bill 1557 (2024)

- Requires advanced treatment of reclaimed water within BMAPs.
- Requires facilities (including private) to provide information to local entities developing domestic wastewater treatment plans and OSTDS remediation plans within BMAP or other restoration areas.

South Florida BMAPs



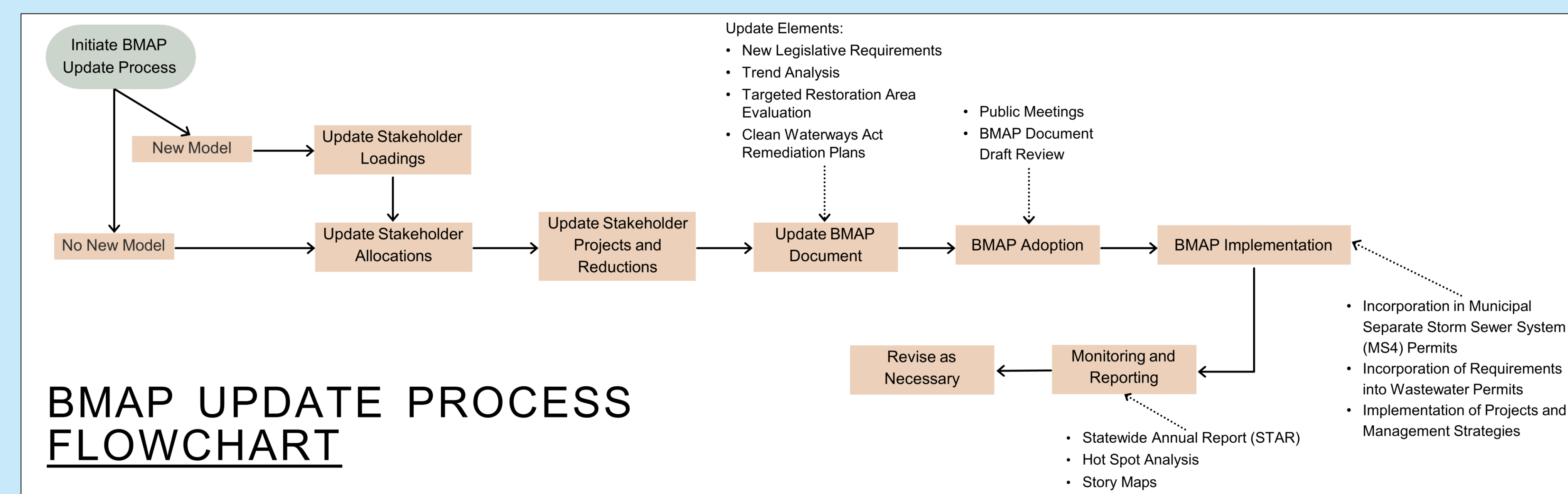
BMAP Update Process

What is a Basin Management Action Plan?

- A BMAP is a framework for water quality restoration that contains a comprehensive set of solutions to achieve the pollutant reductions established by a TMDL.
- A BMAP is developed with local stakeholders and relies on local input and commitment for successful implementation.
- BMAPs are adopted by Secretarial Order and are legally enforceable.
- BMAPs use an adaptive management approach that allows for incremental load reductions through the implementation of projects and management strategies, while simultaneously monitoring and conducting studies to better understand the water quality and hydrologic dynamics.

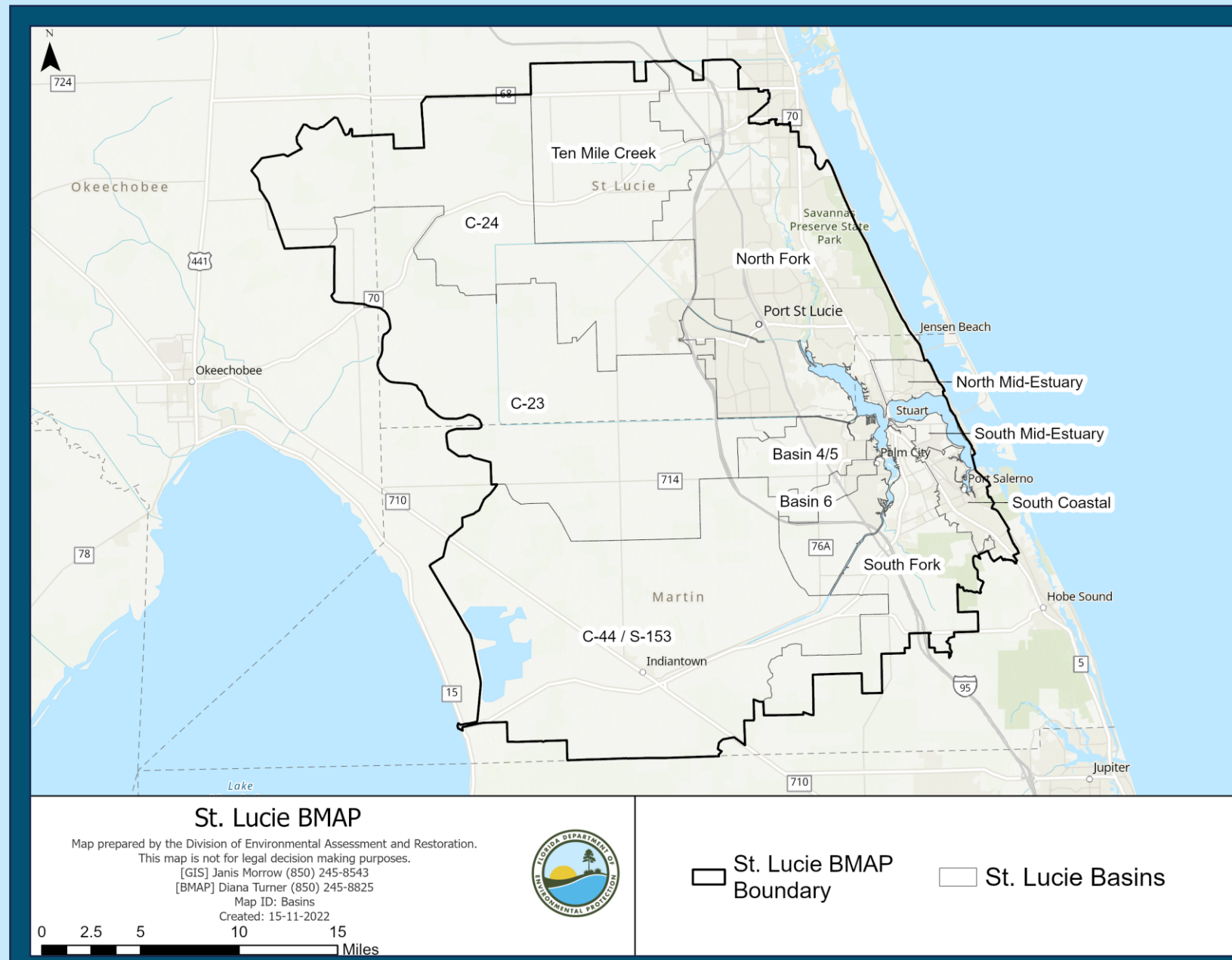
Key Elements of a BMAP:

- TMDL(s) being addressed. These are the restoration targets.
- Physical description of the waterbody and contributing area.
- Description of the monitoring network and water quality.
- Identification of pollutant sources.
- Identification of responsible stakeholders.
- List of projects and strategies to reduce loading.
- Applicable legal requirements.



ST. LUCIE RIVER AND ESTUARY BASIN MANAGEMENT ACTION PLAN (BMAP) WATER QUALITY ANALYSES

BMAP Background

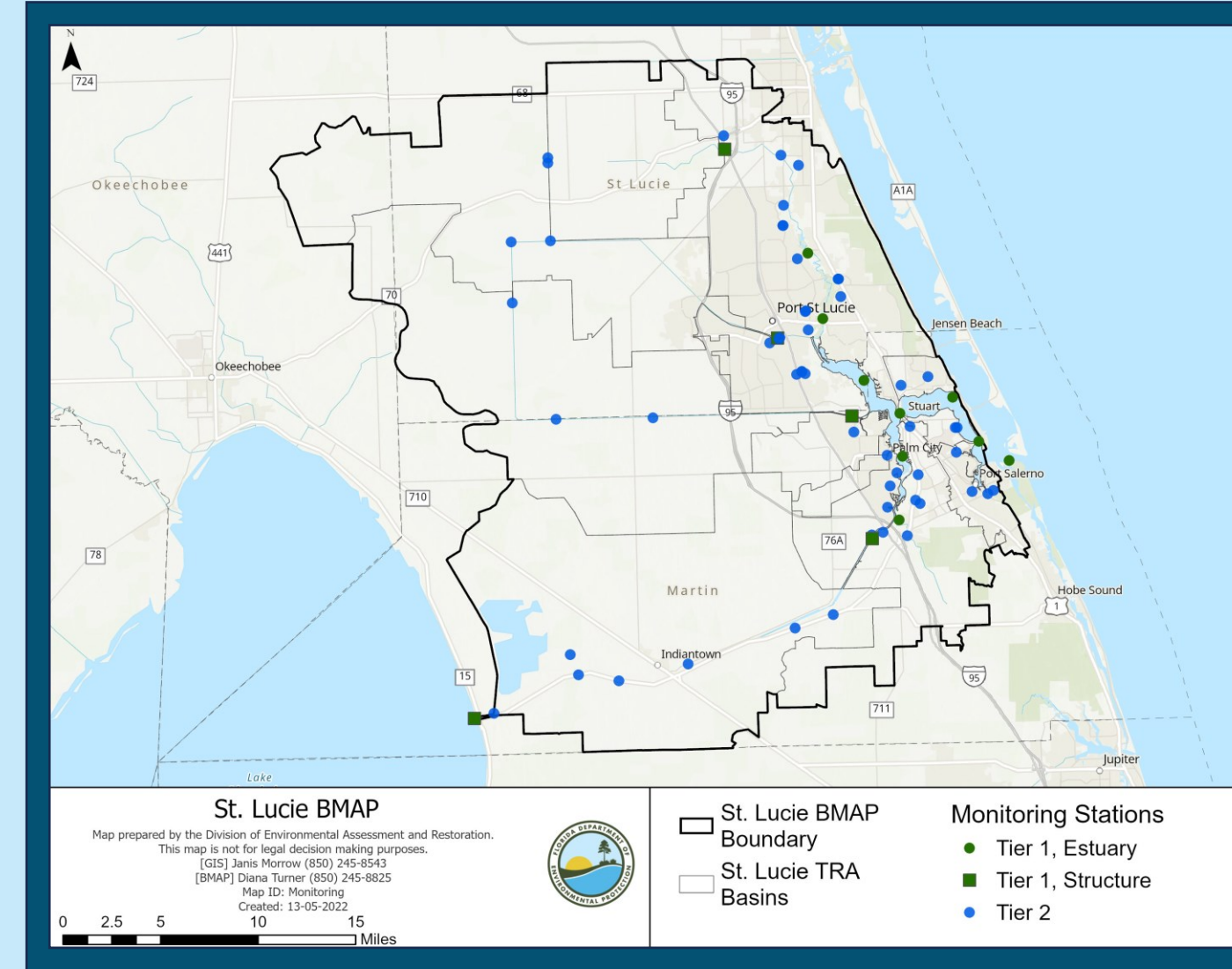


St. Lucie Total Nitrogen (TN) and Total Phosphorus (TP) Total Maximum Daily Loads (TMDLs) were established in 2009:

TP: 0.081 mg/L.
TN: 0.72 mg/L.
mg/L = milligrams per liter.

BMAP established in 2013, and the boundary was updated in 2020.

Water Quality Monitoring Network

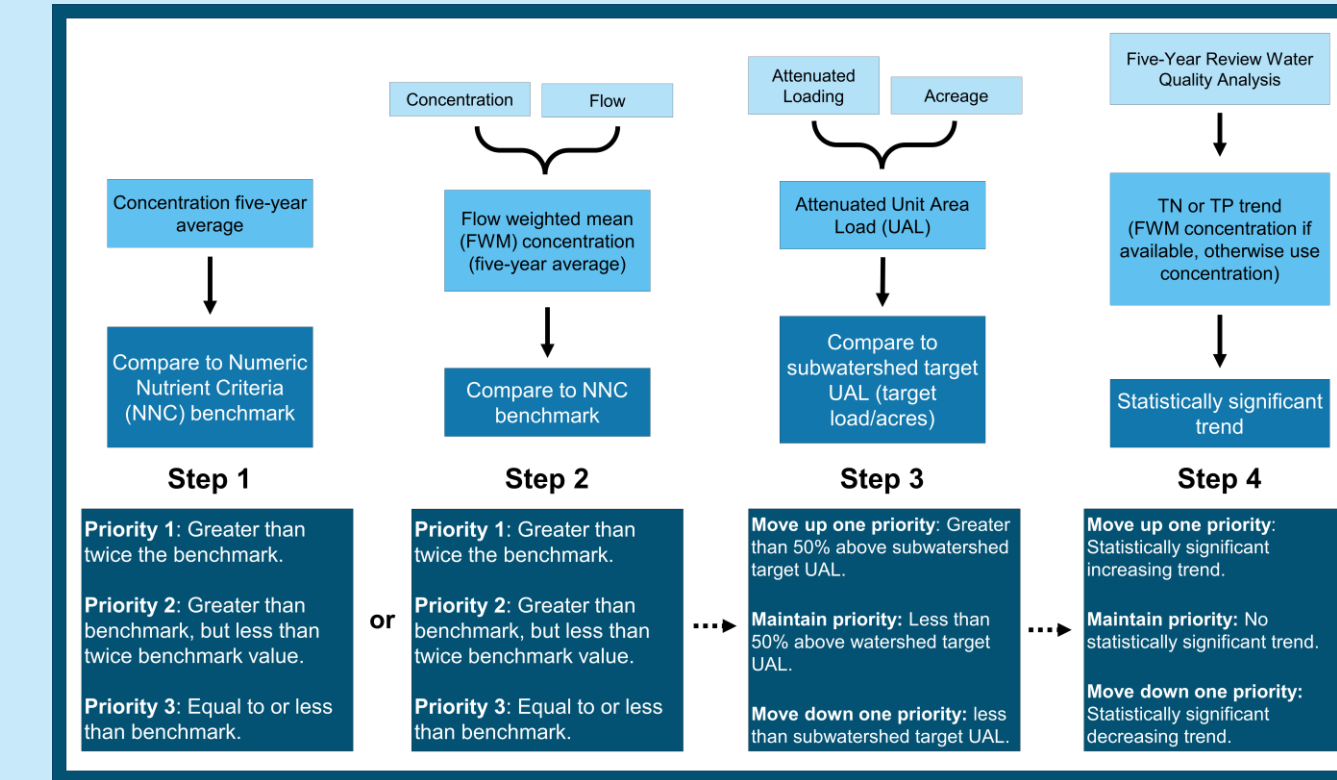


Water Quality Parameters Monitored

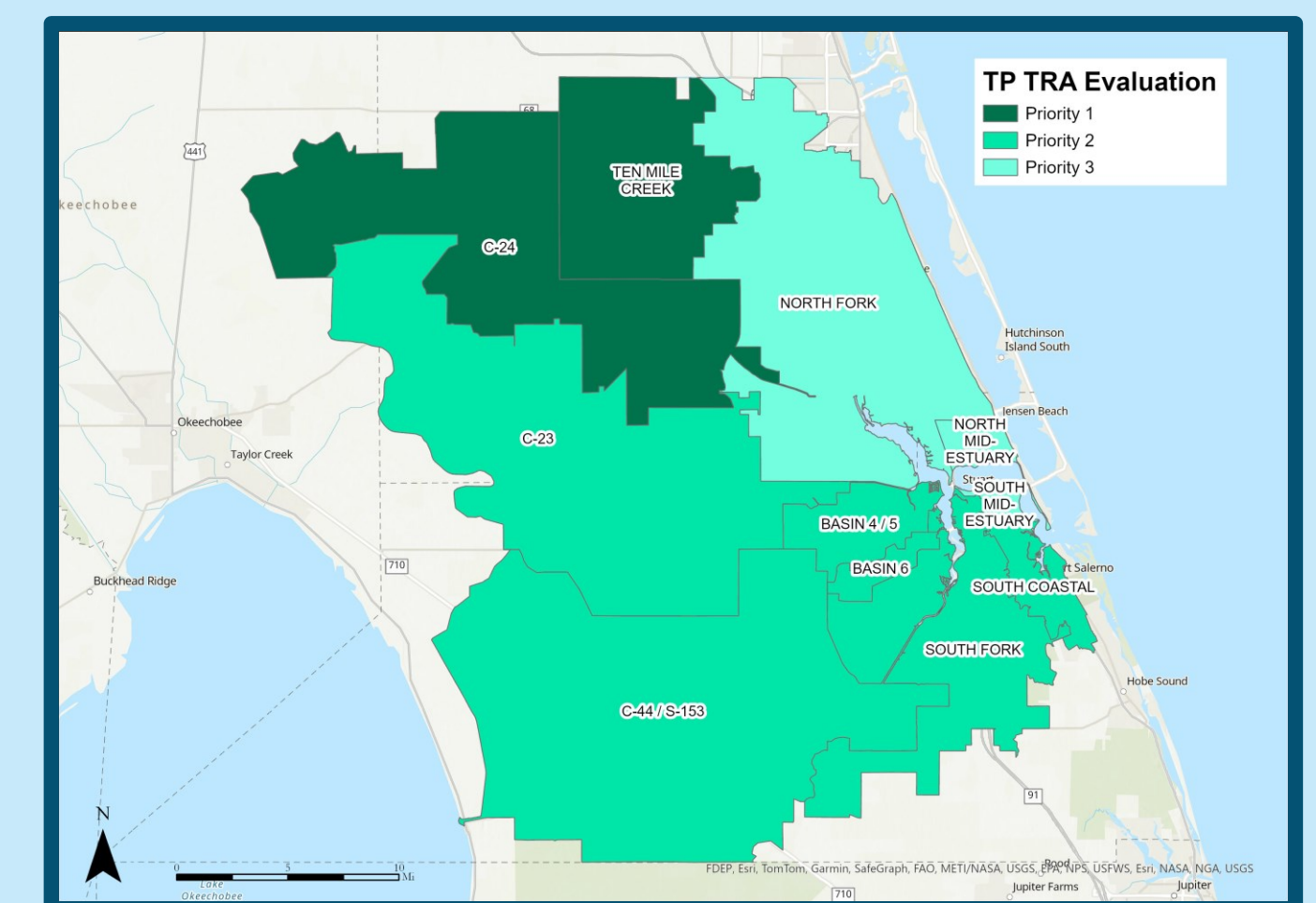
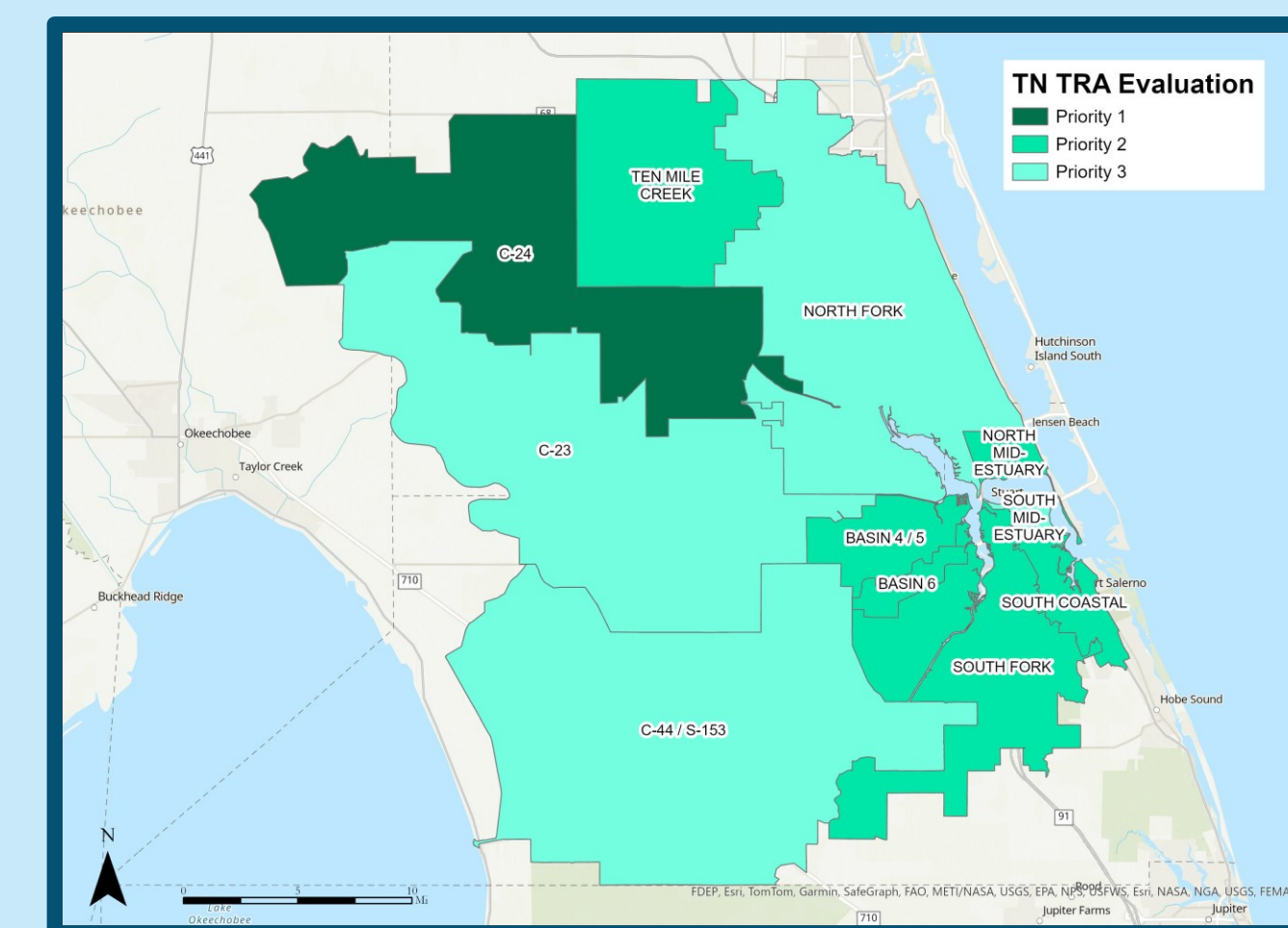
Alkalinity	Nitrate-Nitrite (N)
Ammonia (N)	Total Kjeldahl Nitrogen (TKN)
Biological Oxygen Demand (BOD)	Total Nitrogen (TN)
Organic Carbon	Orthophosphate (P)
Total Carbon	pH
Chlorophyll-a	Total Phosphorus (TP)
Color	Specific Conductance/Salinity
Dissolved Oxygen	Temperature
Dissolved Oxygen (Saturation)	Total Suspended Solids
Flow	Turbidity

Water quality is monitored at 69 stations throughout the watershed.

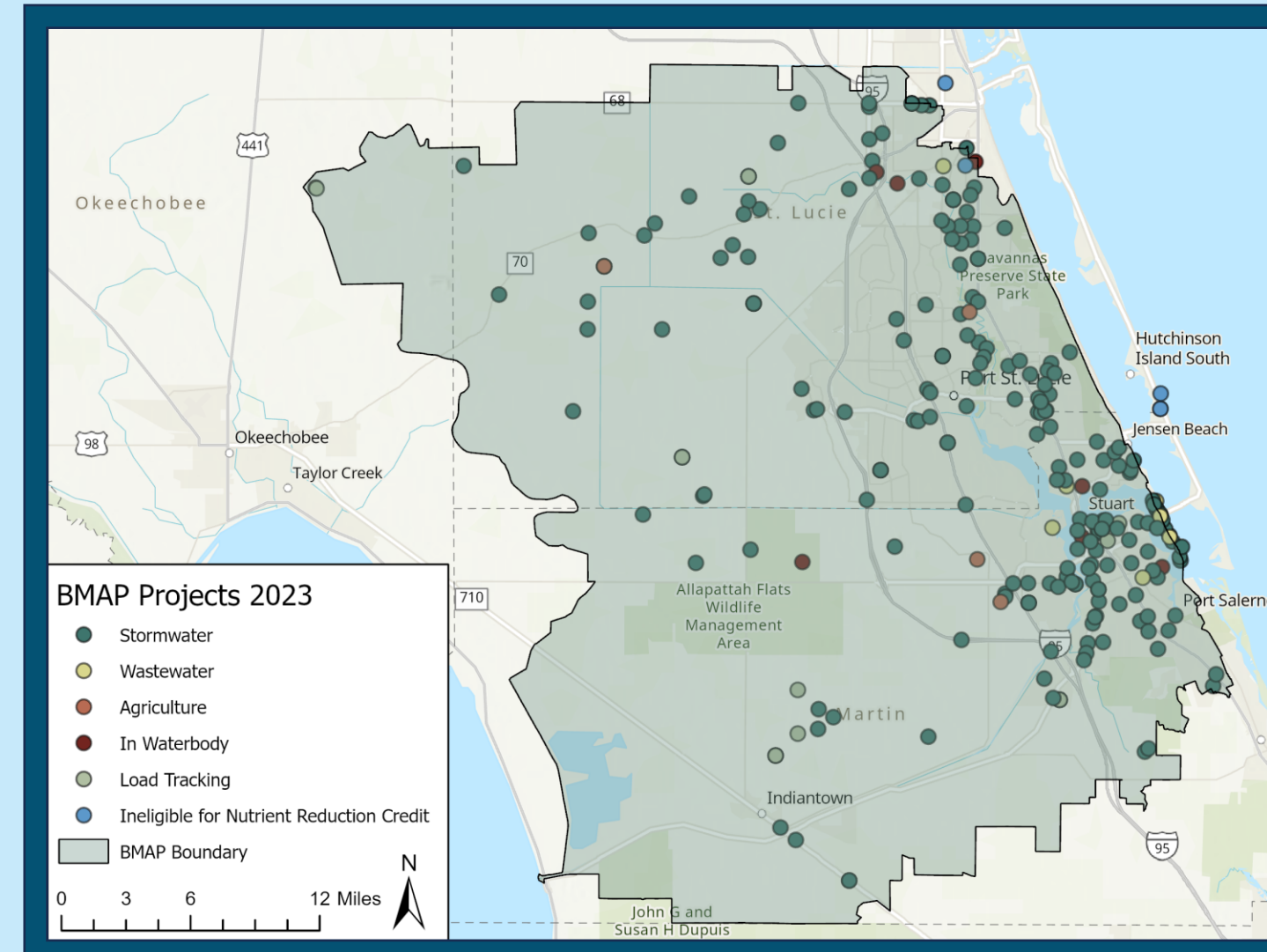
Targeted Restoration Area Evaluation



Targeted Restoration Areas (TRA) sequentially compare four parameters to determine priority basins for restoration projects.



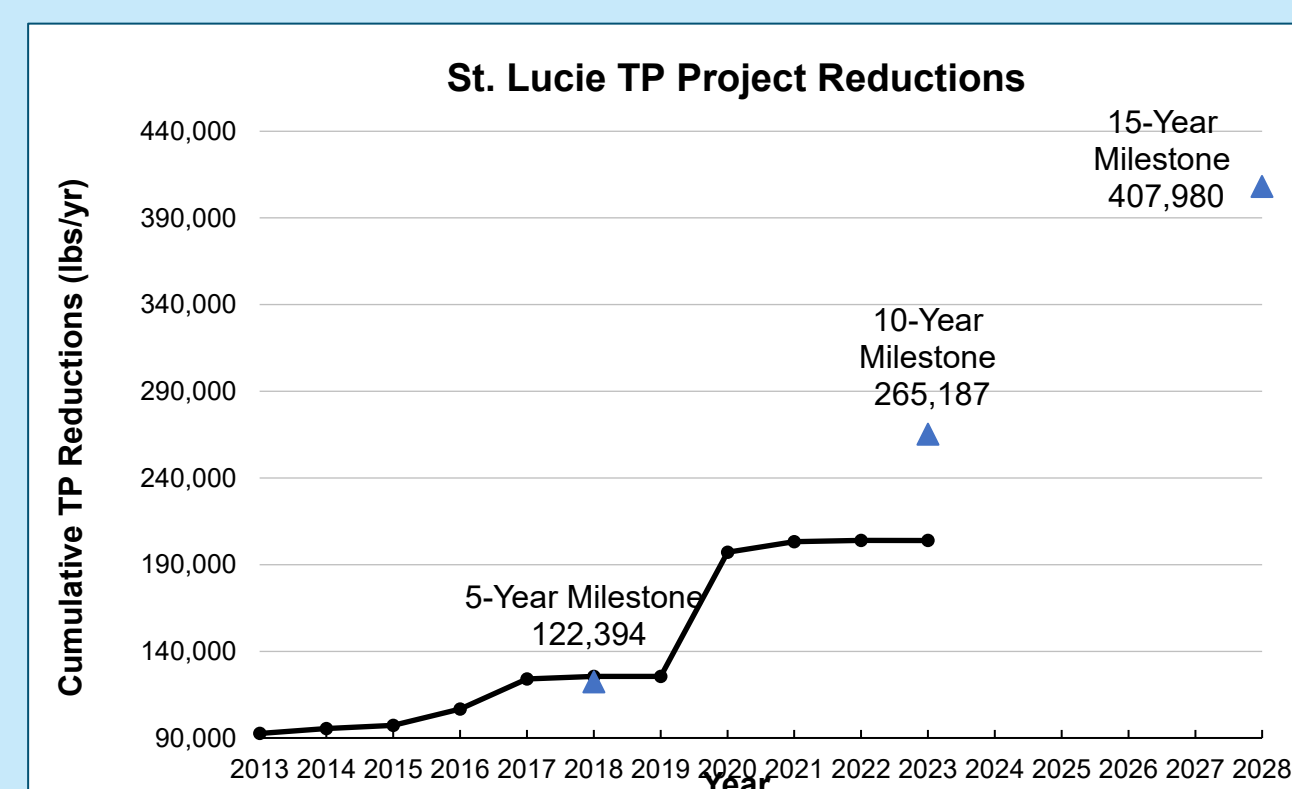
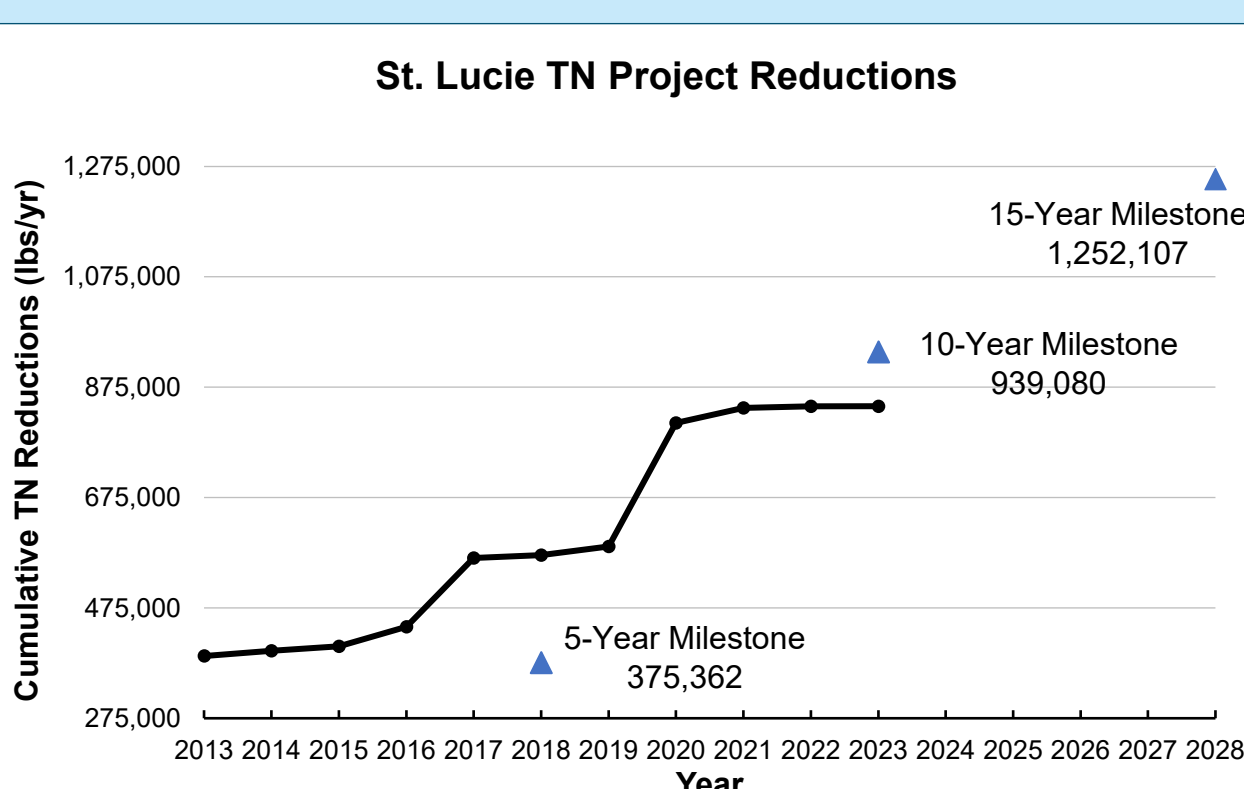
Statewide Annual Report (STAR) 2023



Entity	Completed	Ongoing	Planned	Underway	Total
City of Fort Pierce	9	4	0	0	13
City of Port St. Lucie	26	4	0	4	34
City of Stuart	21	3	0	1	25
FDACS/Agriculture	12	8	0	0	20
FDOT District 4	60	2	0	0	62
Fort Pierce Utilities Authority	0	0	1	5	6
Hobe St. Lucie Conservancy District	1	0	1	0	2
Martin County	40	3	1	3	47
North St. Lucie River WCD	11	0	0	0	11
SFWMD - Coordinating Agency	8	0	1	1	10
St. Lucie County	9	9	4	4	26
St. Lucie West Services District	2	3	0	0	5
Town of Sewall's Point	30	2	2	3	37
Troup-IndianTown WCD	2	0	0	2	4
Tumpline Enterprise	3	2	0	0	5
Tradition CDD	0	0	1	2	3
Total	234	40	11	25	310

310 projects in the BMAP address both stormwater and wastewater sources of pollution.

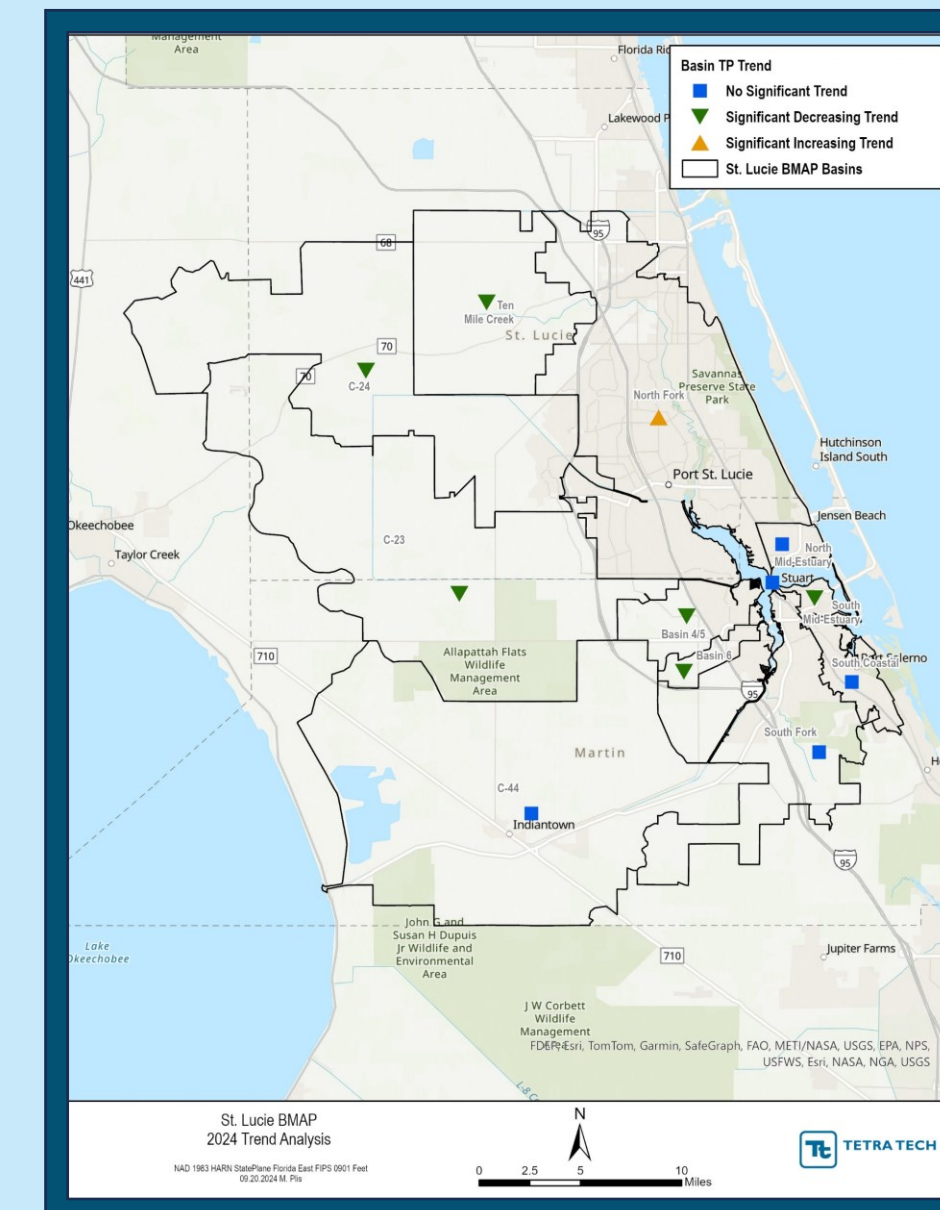
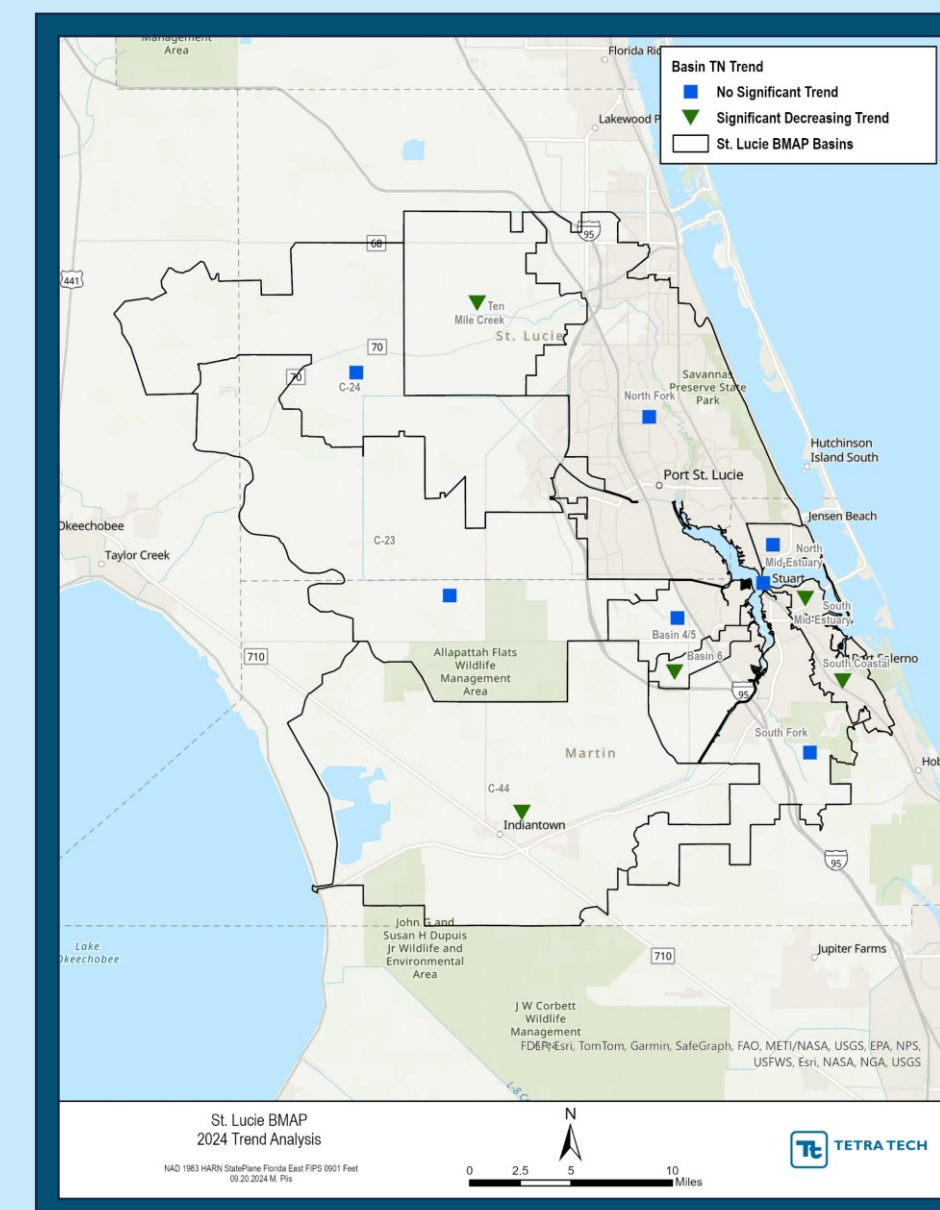
Completed and ongoing projects have achieved 67% of the TN and 50 percent of the TP required reductions.



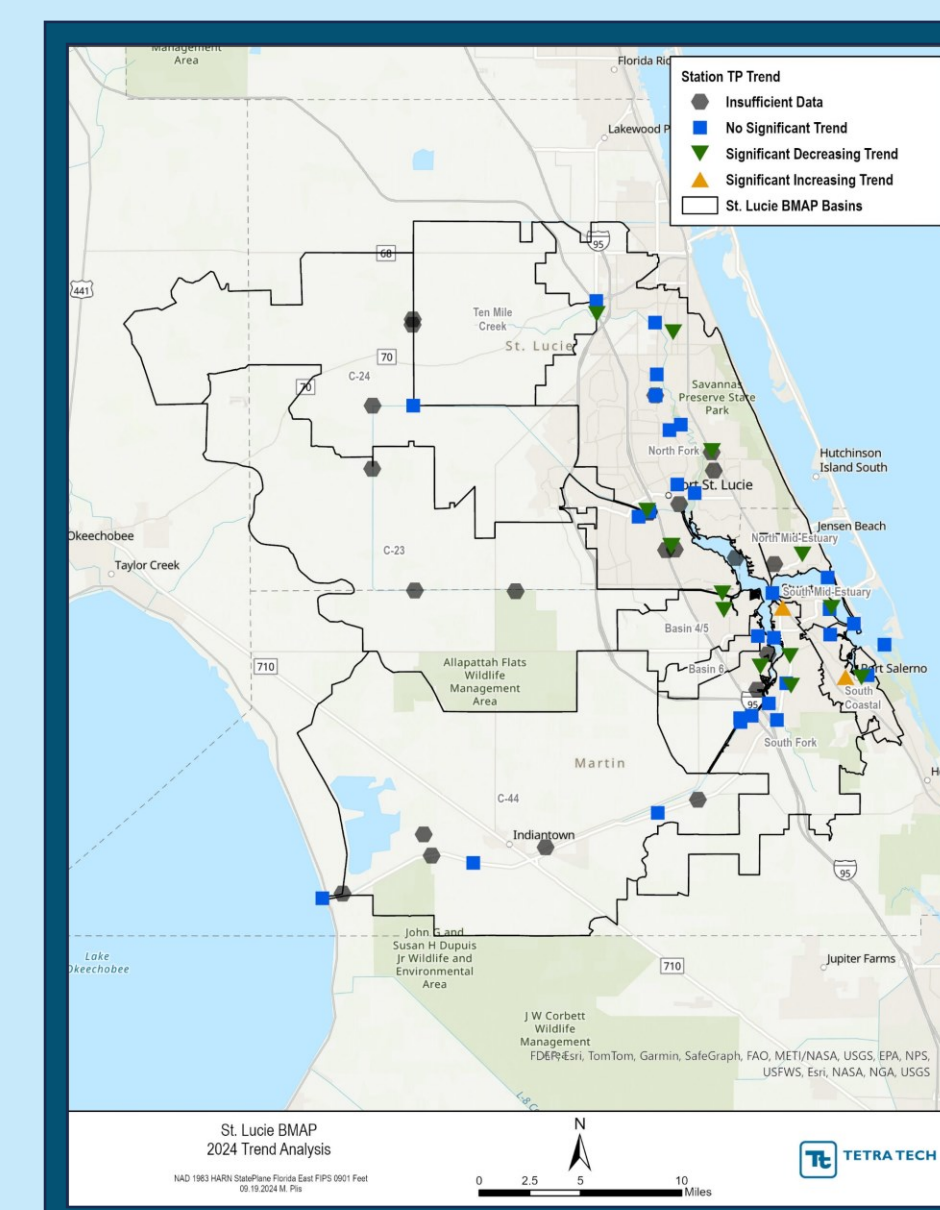
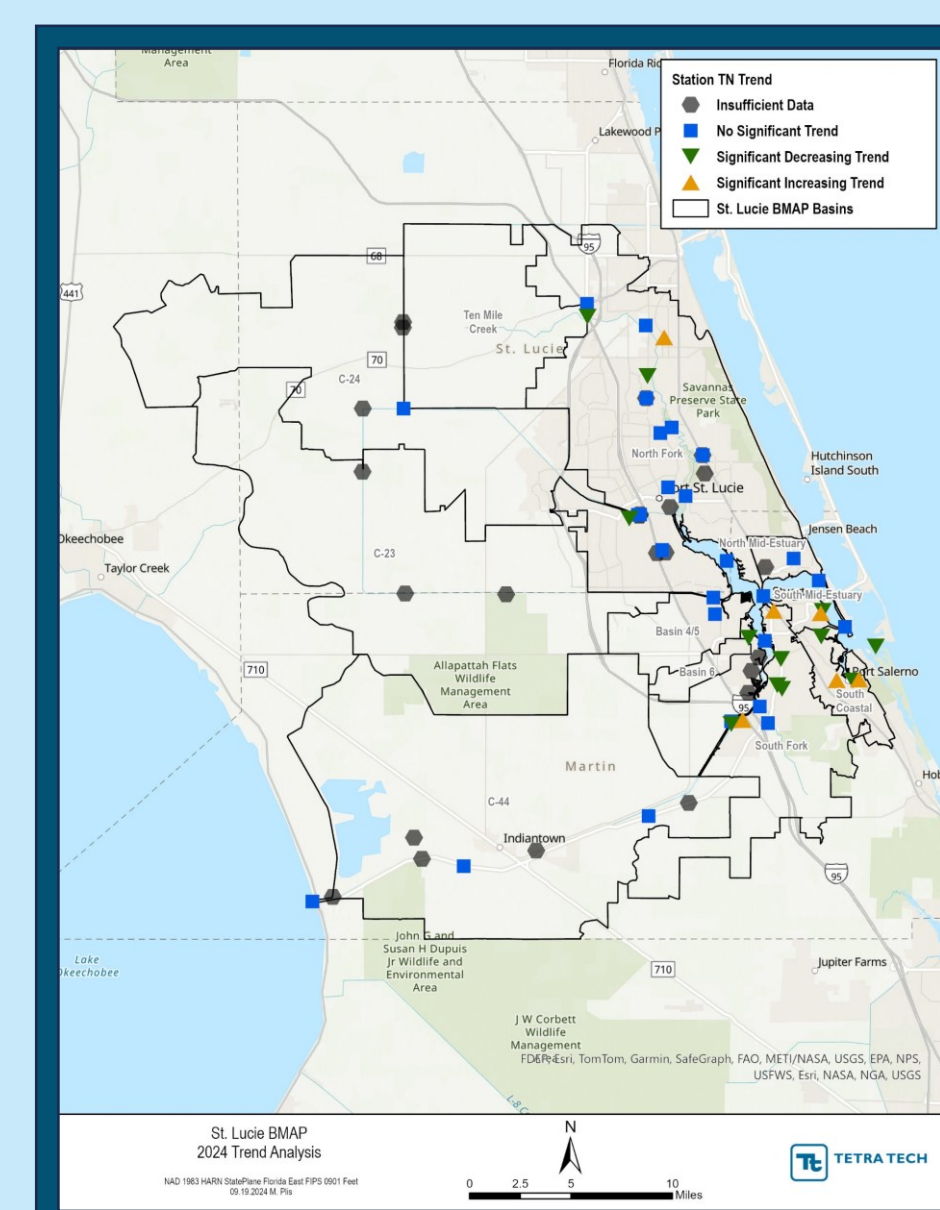
Water Quality Trend Analyses

Seasonal Kendall trend analysis investigates trends in TN and TP concentrations for the basins and for the BMAP monitoring network stations.

Basin Trends

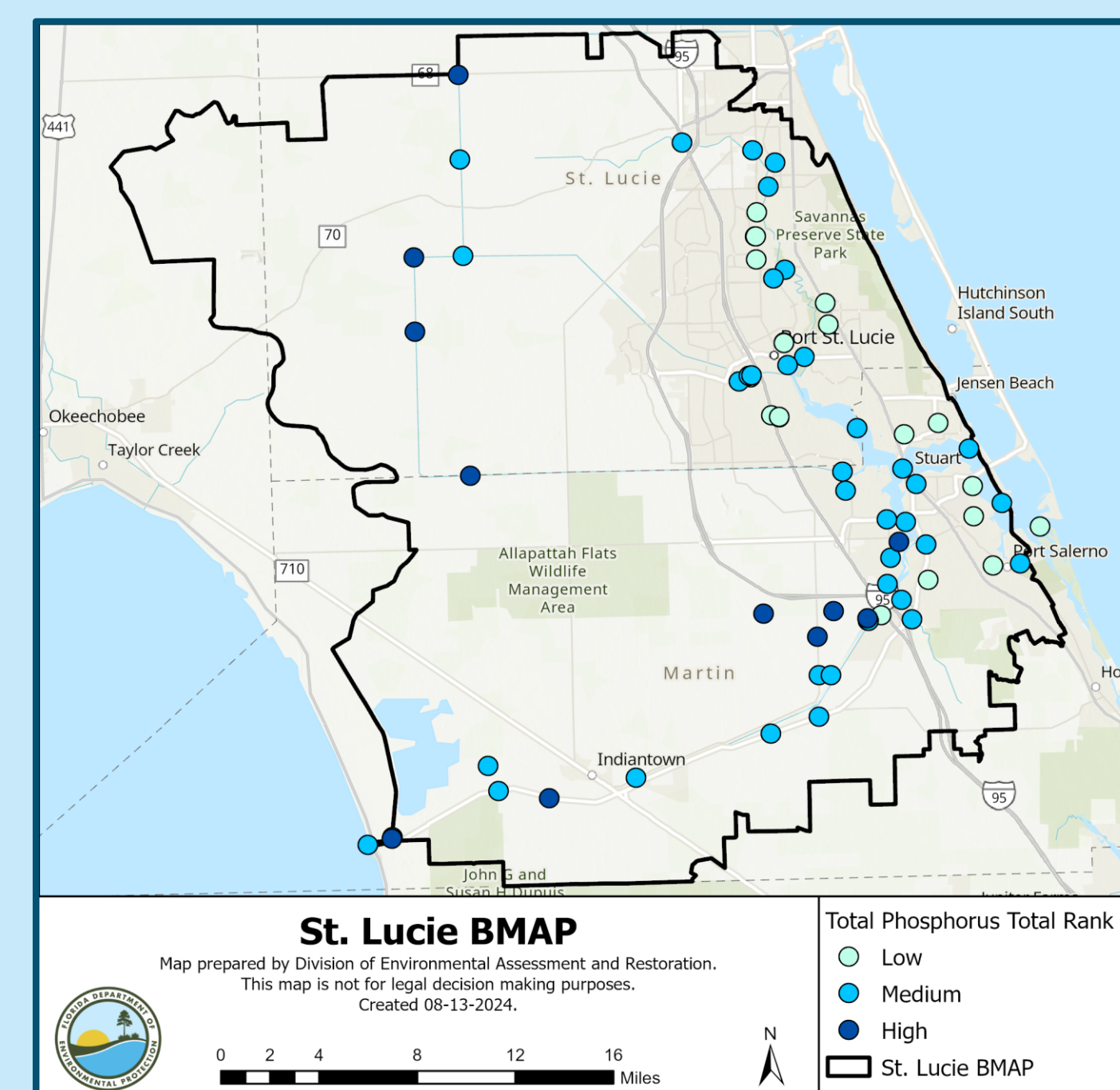
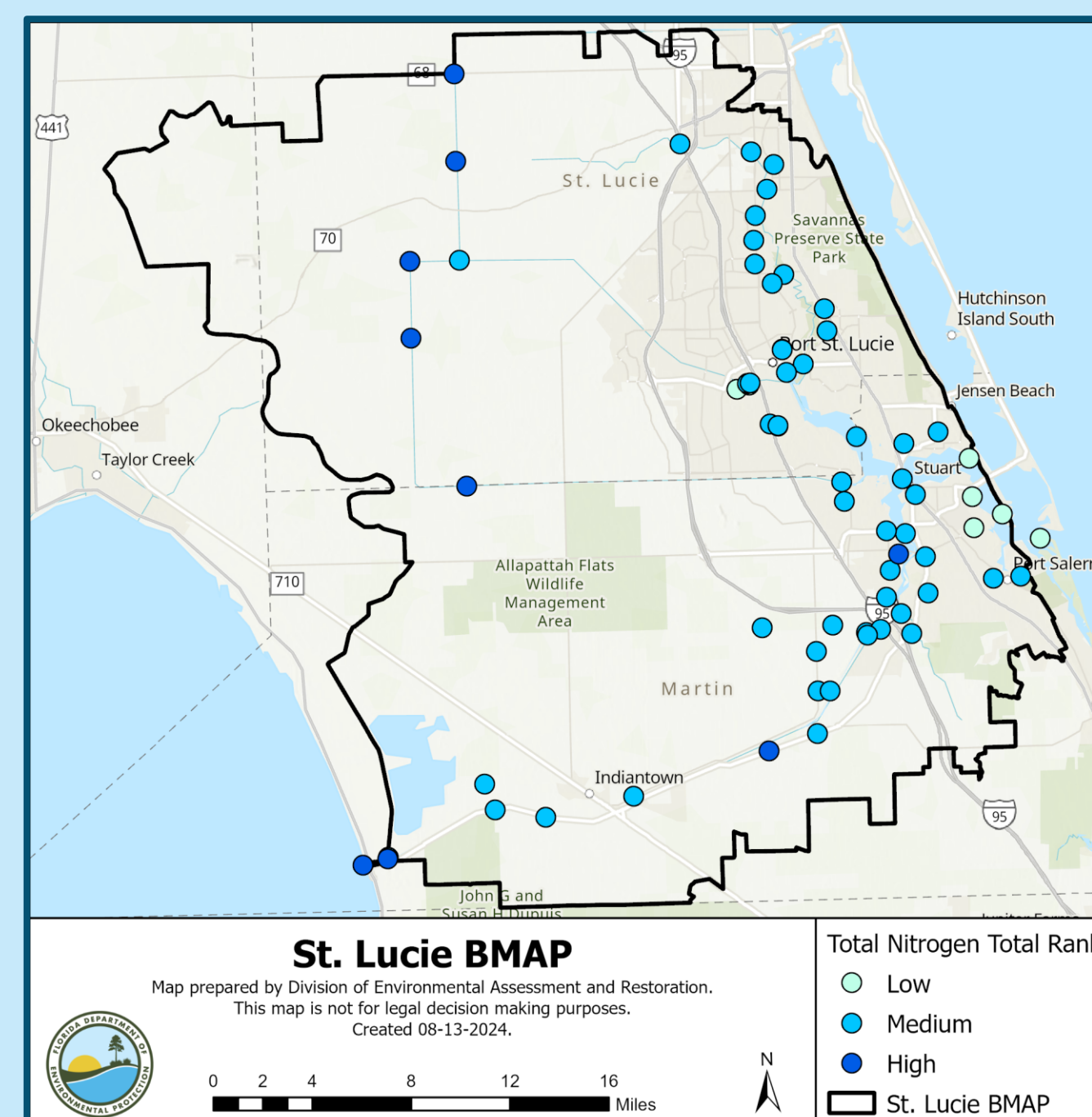
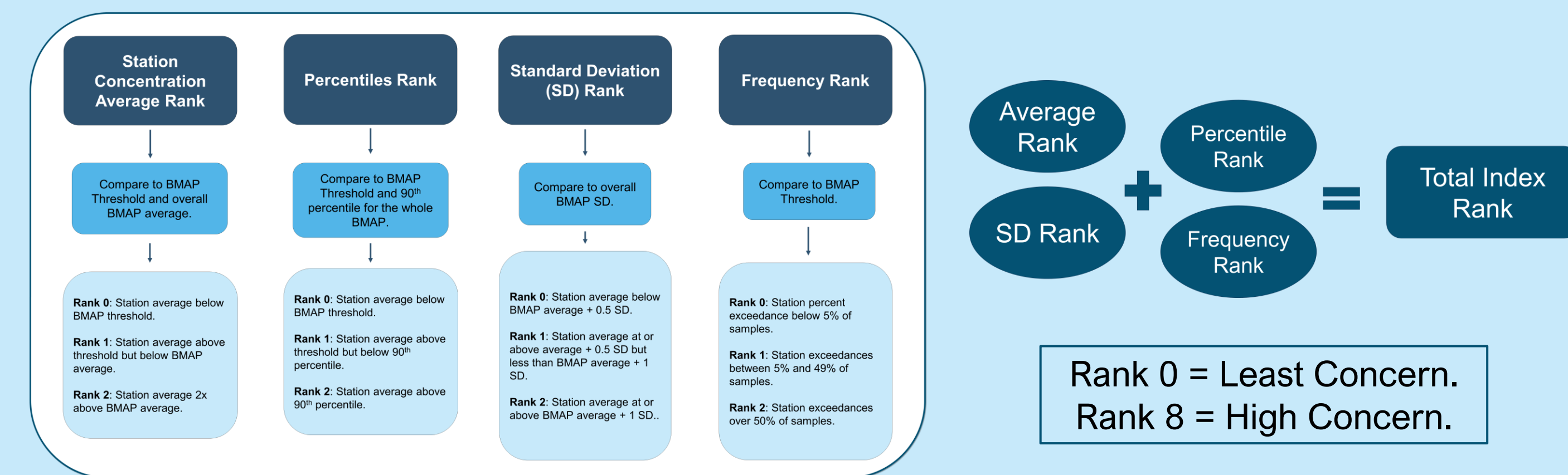


Station Trends



Hot Spot Analysis

Analysis method for prioritization at a more local scale than the TRA analysis.



ST. LUCIE RIVER AND ESTUARY BASIN MANAGEMENT ACTION PLAN (BMAP)

REQUIRED REDUCTIONS AND MILESTONES

Projects

Responsible entities are required to identify, plan, complete and report on projects that reduce the loading of nitrogen from sources.

The basin wide reductions are assessed by source and then allocated to responsible entities.

Project collection and reporting are crucial to the successful implementation and management of BMAPs. Projects are reported to the Florida Department of Environmental Protection (DEP) annually through the BMAP Project Collection Portal. Project lists with associated reductions are published in the Statewide Annual Report (STAR).

Entity Required Reductions and Allocations

Entity	TN Starting Load (lbs/yr)	TN Required Reductions (lbs/yr)	TN Allocation (lbs/yr)	TP Starting Load (lbs/yr)	TP Required Reductions (lbs/yr)	TP Allocation (lbs/yr)
Agriculture	2,128,687	884,700	1,243,987	472,423	284,285	188,138
City of Fort Pierce	48,617	16,205	32,412	8,071	5,266	2,805
City of Port St. Lucie	397,343	138,187	259,156	67,422	44,277	23,145
City of Stuart	36,893	6,003	30,890	6,142	2,700	3,442
Copper Creek CDD	2,591	1,500	1,091	431	306	125
Creekside CDD	1,695	475	1,220	293	175	118
FDOT District 4	44,404	15,907	28,497	8,047	4,801	3,246
FDOT District 1	1,013	594	419	283	218	65
Martin County	388,638	75,231	313,407	66,501	31,786	34,715
Okeechobee County	13,635	7,950	5,685	2,629	1,966	663
Portofino Isles CDD	2,186	1,271	915	371	285	86
River Place CDD	1,166	389	777	195	127	68
Southern Grove CDD	2,107	1,226	881	424	310	114
St. Lucie County	180,521	67,679	112,842	32,612	21,398	11,214
St. Lucie West Service District	40,406	13,469	26,937	6,967	4,545	2,422
Tesoro CDD	7,756	2,585	5,171	1,271	829	442
Town of Sewall's Point	1,919	417	1,502	319	174	145
Tradition CDD	14,621	8,396	6,225	2,562	1,815	747
Turnpike	13,839	4,163	9,676	2,281	1,402	879
Veranda CDD	3,037	1,012	2,025	407	266	141
Verano CDD	1,778	1,030	748	366	260	106
Villa Vizcaya CDD	357	119	238	60	39	21
Village of Indiantown	16,560	3,600	12,960	2,780	751	2,029
Total	3,349,769	1,252,108	2,097,661	682,857	407,981	274,876

Southern Grove Community Development District (CDD) is a new entity for the 2025 BMAP update.

Veranda CDD includes additional area for the 2025 BMAP update.

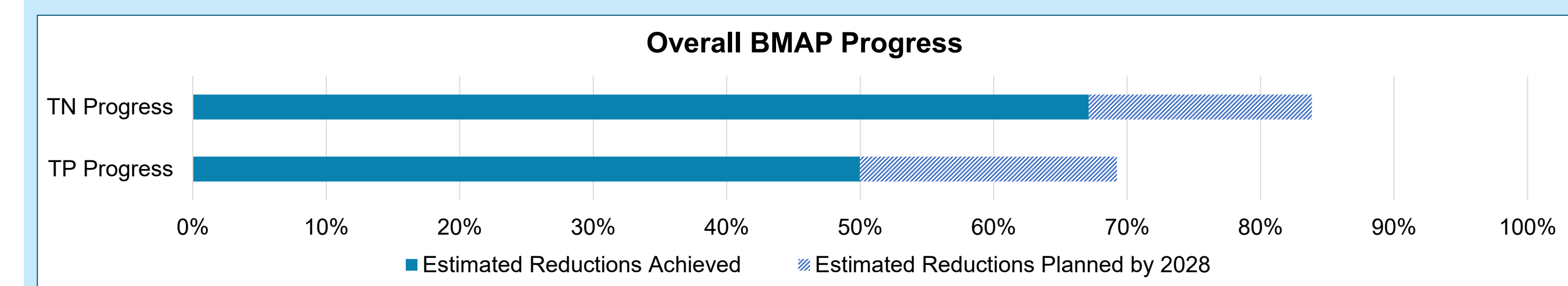
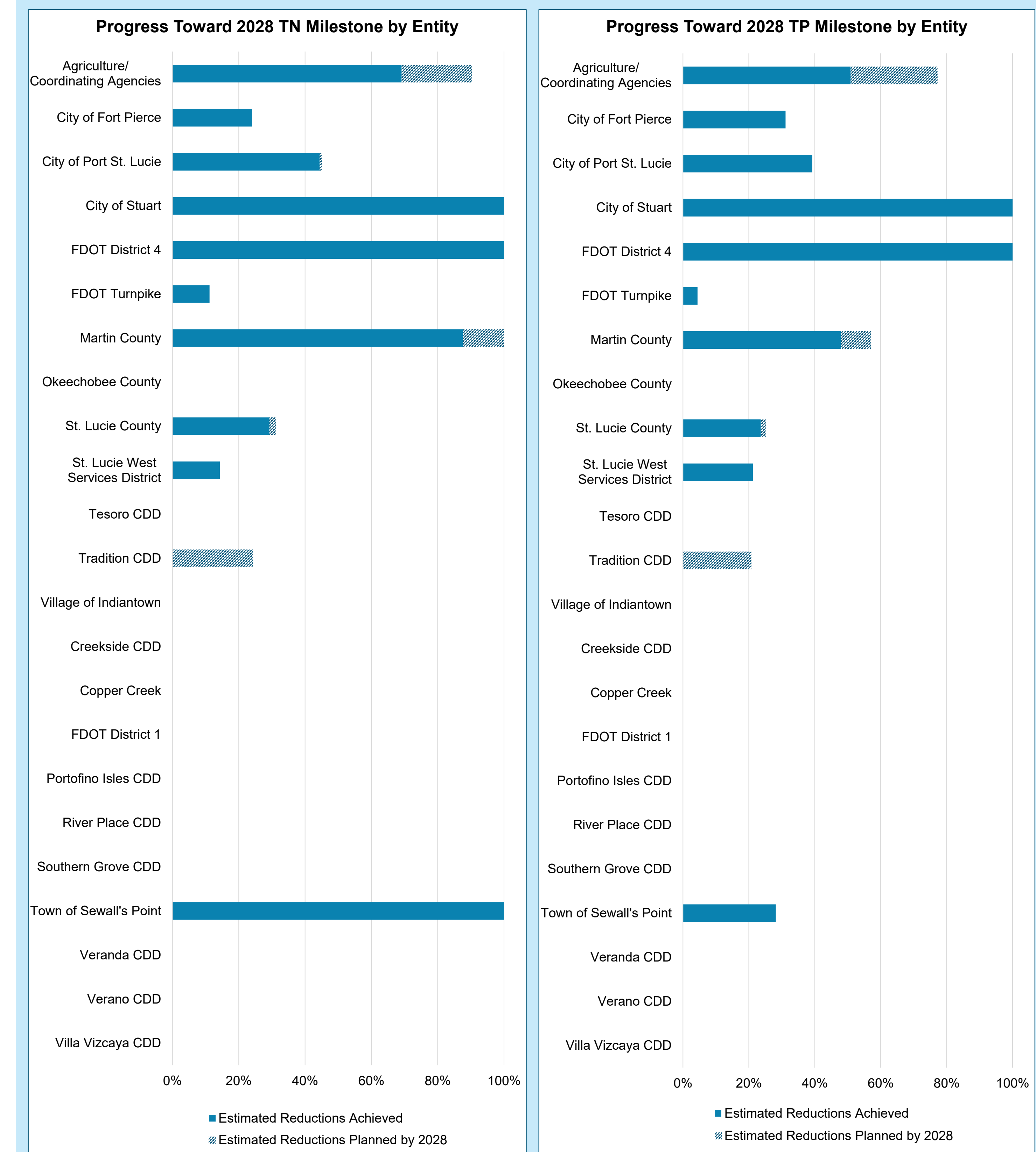
Village of Indiantown is being separated from Martin County for the 2025 BMAP update.

2028 Milestone – 100% Reductions Achieved

Responsible entities are required to provide lists of projects that demonstrate how they plan to achieve their required reductions for the next five-year milestone.

It is important that all projects needed to achieve milestone targets are included in the STAR, even if a funding mechanism is not currently identified. This information provides the state an understanding of the support necessary to achieve BMAP goals and assists with the prioritization of projects.

Estimated reductions in the progress chart below reflect projects entered through December 2023.

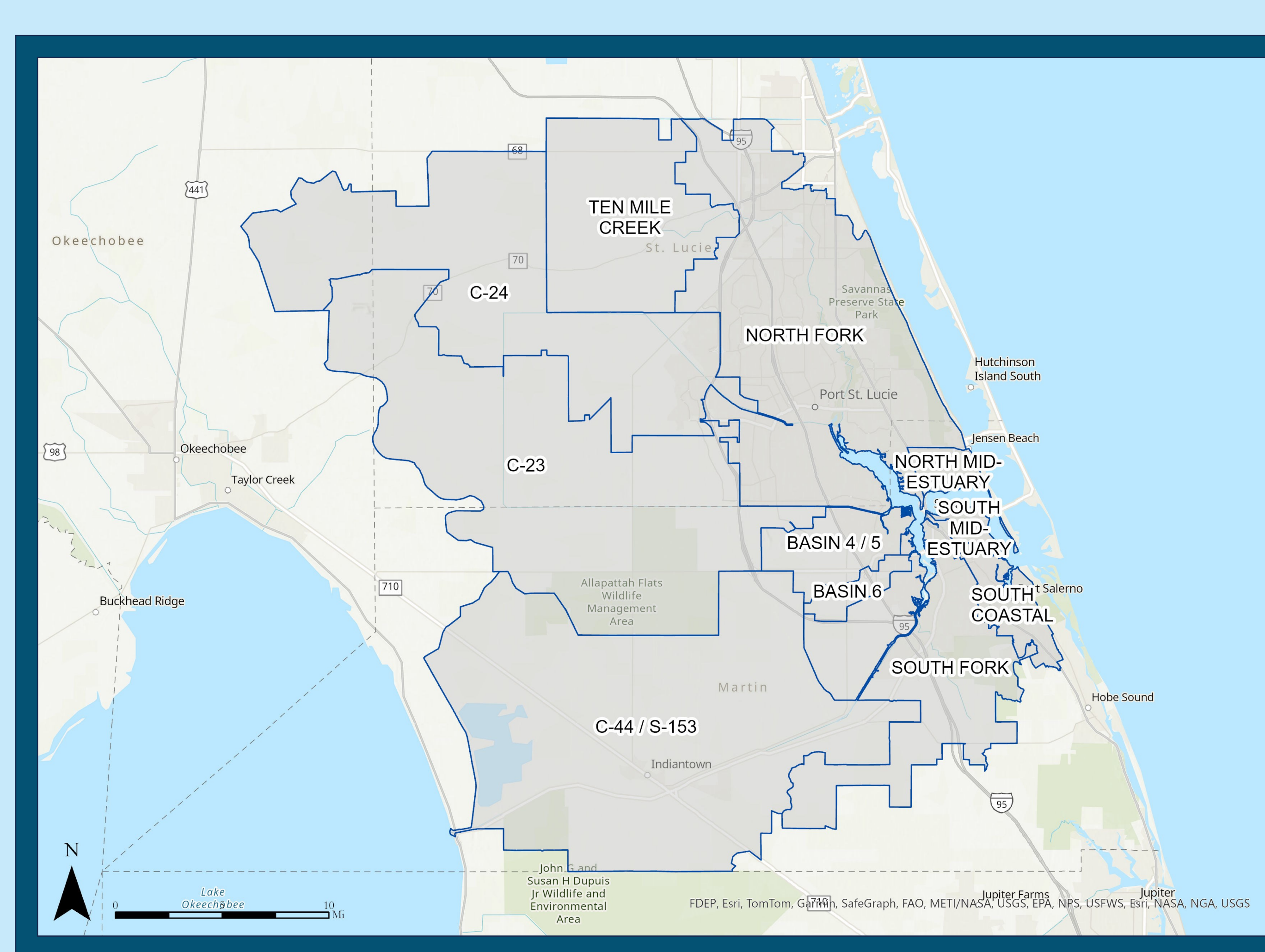


BMAP Management Strategies

Nutrient reduction credits can be earned through implementing projects addressing sources of nutrients. Reduction milestones must be met to ensure sufficient progress towards meeting the total maximum daily load (TMDL) target.

Source-Specific Management Strategies:

- **Onsite Sewage Treatment and Disposal Systems:** No new installation of conventional septic systems on lots of 1 acre or less.
- **Wastewater Treatment Facilities:** Facilities must meet certain effluent limitations.
- **Agriculture Best Management Practices (BMP) Enrollment:** This program is mandatory in BMAP areas, assumes certain efficiencies as described in the BMAP.
- **Other Agriculture:** Agricultural sources that are not addressed through BMP enrollment and implementation will need to be addressed through activities such as regional projects, cost-share BMPs or innovative technologies.
- **Urban Stormwater:** Ordinances, education, street sweeping and structural stormwater improvements.



St. Lucie River and Estuary Basin Management Action Plan (BMAP) Meeting Summary

*Palm City Community Center
2701 SW Cornell Avenue, Palm City, FL 34990
Tuesday, November 19, 2024
9:00 am – 11:00 am*

Participants

Christian Avila, SFWMD	Celeste Lyon, RES
Venetia Barnes, Fort Pierce	Jonathan Madden, SFWMD
Evelyn Becerra, DEP	Sherry McCorkle, SFWMD
Rebecca Dougherty, SFWMD	Valentina Miele, FL Oceanographic Society
Amy Eason, Martin County	Caitlin Newcamp, Audubon
Yesenia Escribano, FDACS	Sara Ouly, SFWMD
Jessica Ferris, FDACS	Mark Perry, Florida Oceanographic Society
Jake Fojtik, Florida Farm Bureau	HM Ridgely, Evans Properties
Marcy Frick, Tetra Tech	Gil Smart, Friends of the Everglades
Aubrey Frye, SFWMD	Mary Szafraniec, RES
Raichel Gulde, RES	Jennifer Thera, FDACS
Chris Guth, Federico & Associates	Todd Thurlow, Public
Moira Homann, DEP	Tony Tomalewski, DEP
Megan Jacoby, SFWMD	Diana Turner, DEP
Jacob Landfield, SFWMD	Jessica Wakefield, SFWMD
Mitchell Latzman, Friends of the Everglades	Benita Whalen, FCA

Welcome and Introductions

Marcy Frick welcomed everyone to the St. Lucie River and Estuary BMAP meeting, and the participants introduced themselves and the entity they represent.

Agency Presentations

Diana Turner provided an update on the revised BMAP components, many of which are in response to recent legislation. She noted that the Lake Okeechobee BMAP 5-Year Review document was provided for review a few weeks ago and comments are due on Friday. Diana reviewed the BMAP update schedule, which includes technical meetings this week, draft BMAP update in January for review, another round of public meetings to present on the draft BMAP document, public comment period, and then finalization by July 1, 2025. The BMAP project collection portal was opened early for BMAP updates and it will remain open until mid-January for the Statewide Annual Report (STAR).

Megan Jacoby stated that the South Florida Water Management District (SFWMD) is conducting the five-year update for St. Lucie River Watershed Construction Project (SLRWCP). They have been providing updates on the projects annually in the South Florida Environmental Report (SFER) to provide accountability for the BMAP and to help achieve the total maximum daily loads (TMDLs). The SLRWCP has 10 projects in planning or design, 2 in construction, and 11 in operations. These are all SFWMD led projects but they also have projects in conjunction with the Coordinating Agencies. Projects to date have provided over 100,000 acre-feet of storage, with an additional 122,000 acre-feet of storage as the Indian River Lagoon projects come online. SFWMD is also updating the previous model from 2008–2009, and the updated model shows the estimated storage needed for this watershed from the

previous modeling of 200,000 acre-feet is correct. The draft 2025 SFER is available for public comment through December 17.

Jennifer Thera reviewed the staff changes at the Florida Department of Agriculture and Consumer Services (FDACS). She noted that they are working to update all 12 best management practice (BMP) manuals and the FDACS website has a rule development activities webpage with the latest details on the updates. FDACS is also updating the cost-share program to create a system to evaluate projects and status to provide transparent information. They are also increasing the amount of cost-share if producers provide monitoring data. Jennifer showed the BMP enrollment status for each of the St. Lucie BMAP basins. The FDACS website includes an interactive map showing enrollment, commodity type, and last implementation verification visit.

Poster Session

After the agency presentations, a poster session was held to allow participants to have one-on-one discussions with the agency staff, ask questions, and provide comments. No comment cards were submitted during the meeting.