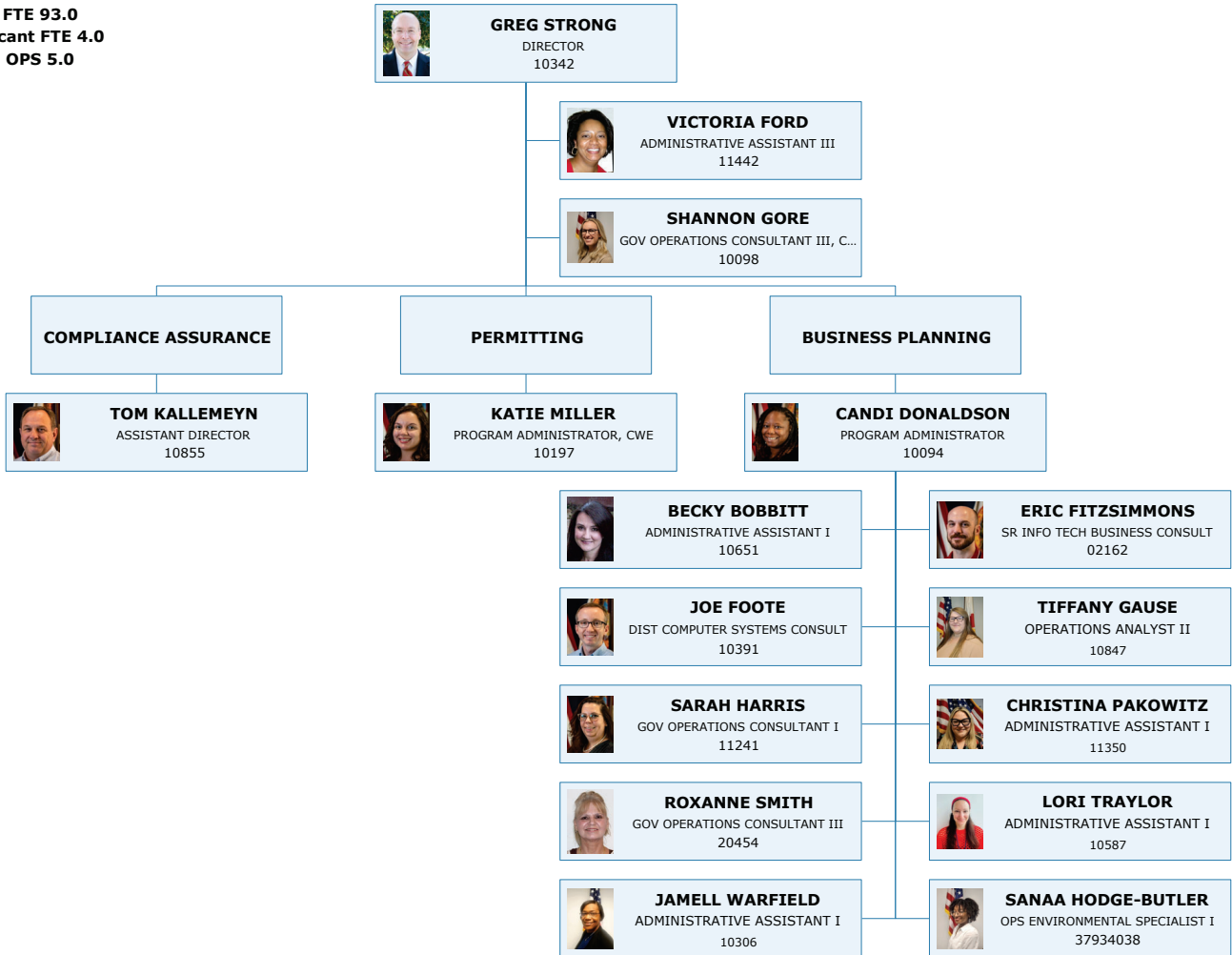




Northeast District- FUNCTIONAL
MAY 2026

FTE 93.0
Vacant FTE 4.0
OPS 5.0





Northeast District
MAY 2026
FTE 40.0
Vacant FTE 2.0
OPS 0

PERMITTING

 **KATIE MILLER**
 PROGRAM ADMINISTRATOR, CWE
 10197


 **KHRISTIAN MANGAHAS**
 ENVIRONMENTAL MANAGER/CWE
 20919-ERP

 **SHANNON TAYLOR**
 ENVIRONMENTAL MANAGER
 10608-WW/PW

 **BRIAN DURDEN**
 ENVIRONMENTAL MANAGER
 10387-AIR/SW

 **MATTHEW BRADEN**
 ENVIRONMENTAL SPECIALIST III, CWE
 20977 - ERP

 **TYLER CATANZARITI**
 ENGINEERING SPECIALIST I
 02478 - PW/WW/StW


 **JULIA BOESCH**
 ENGINEERING SPECIALIST IV
 11573 - SW/AIR

 **TIANNA GOODHART**
 ENVIRONMENTAL SPECIALIST III/CWE
 10091 - ERP

 **RODNEY CHRISTENSEN**
 ENGINEERING SPECIALIST IV
 10386 - WW

 **MICHAEL BOGIN**
 ENGINEERING SPECIALIST IV
 11318 - SW/WCU

 **NEELIA HEATH**
 ENVIRONMENTAL SPECIALIST II
 10878 - ERP

 **SAABRIS JAAMAL**
 ENGINEERING SPECIALIST II
 20113 - WW/StW


 **RITA FELTON-SMITH**
 ENGINEERING SPECIALIST IV
 11533 - AIR

 **SARA HEULER**
 ENVIRONMENTAL SPECIALIST III, CWE
 11119 - ERP

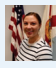
 **JAIDEN JOHNSON**
 ENGINEERING SPECIALIST II
 20921 - WW/PW

 **IMANI FORD**
 ENVIRONMENTAL SPECIALIST I
 11223 - AIR

 **SHANE JORDAN**
 ENVIRONMENTAL SPECIALIST I
 11017 - ERP

 **LYDIA JOYNER**
 ENGINEERING SPECIALIST IV
 11453 - PW/WW


 **LESLIE MAYBIN**
 ENVIRONMENTAL CONSULTANT
 11532 - AIR


 **LAUREN MILLER**
 ENVIRONMENTAL SPECIALIST II
 11195 - ERP

 **ANGELINA ORTIZ**
 ENVIRONMENTAL SPECIALIST III
 11508 - PW/WW/StW

VACANT 2.1.26
 ENGINEERING SPECIALIST IV
 11330 - GW/UIC/SW

 **AMANDA NAMSIH**
 ENVIRONMENTAL CONSULTANT/CWE
 20123 - ERP

 **CONNOR PARKER**
 ENGINEERING SPECIALIST II
 10187 - WW/PW/StW

 **VALARIE OLBRICH**
 ENVIRONMENTAL SPECIALIST I
 10740 - ERP

 **DIOGO PEREIRA**
 ENGINEERING SPECIALIST I
 10095 - WW

 **BETHANY PRESSLER**
 ENVIRONMENTAL SPECIALIST II
 00182 - ERP

 **JUNE SHI**
 PROFESSIONAL ENGINEER III
 11351 - STW

VACANT 5.1.26
 ENVIRONMENTAL CONSULTANT/CWE
 11436 - ERP

 **DUNG VO**
 PROFESSIONAL ENGINEER III
 10089 - WW/STW

 **JUVELENE YDIA**
 ENGINEERING SPECIALIST III
 20922 - WW



**Northeast District
APRIL 2026**

**FTE 45.0
Vacant FTE 2.0
OPS 4.0**

COMPLIANCE ASSURANCE

TOM KALLEMEYN
ASSISTANT DIRECTOR
10855

JONI PETRY
ENVIRONMENTAL ADMINISTRATOR
11009- WW

KERI ARMSTRONG
ENVIRONMENTAL MANAGER, CWE
20976- ERP

CHRISTOPHER AZCUY
ENVIRONMENTAL MANAGER
10929-AIR/SW

MATT KERSHNER
ENVIRONMENTAL MANAGER
11430-HW/STW

SHANE TIERNEY
ENVIRONMENTAL MANAGER
10728-PW

ANTHRON BROCKS
ENVIRONMENTAL MANAGER/CWE
10497-WCU/TANKS

TATIANNA FLOYD
ENVIRONMENTAL SPECIALIST I
20975 - WW/GREASE

ANIYAH GRAHAM
ENVIRONMENTAL SPECIALIST I
10945 - WW

CONOR LUCEY
ENVIRONMENTAL SPECIALIST III/CWE
10518 - WW

ABHI MATURI
ENVIRONMENTAL SPECIALIST III
10747 - WW

QUANG NGUYEN
ENVIRONMENTAL SPECIALIST I
11412 - WW

HERNDON SIMS
ENVIRONMENTAL CONSULTANT
10390 - WW

IAN WATKINS
ENVIRONMENTAL SPECIALIST II
11132 - WW

LISA HUXTABLE
OPS GOVERNMENT ANALYST I
37960013- WW

VACANT 5.1.26
ENVIRONMENTAL SPECIALIST III
11011 - WW/SW

ERIN CLARK
ENVIRONMENTAL SPECIALIST II/CWE
01408 - SLERP

ARON HAMILTON
10532 - SLERP
ENVIRONMENTAL SPECIALIST III/CWE

CALLIE INGRAM
ENVIRONMENTAL SPECIALIST II/CWE
20122 - SLERP

JASON NEUMANN
ENVIRONMENTAL CONSULTANT/CWE
10944 - SLERP

CARMINE OLIVERIO
ENVIRONMENTAL SPECIALIST III
10393 - MULTI-PROGRAM

DIANA OROZCO
20183 - SLERP/STW
ENVIRONMENTAL SPECIALIST I

BRANDI PHILIPS
ENVIRONMENTAL SPECIALIST III/CWE
10250 - SLERP

CHRISSE SELLERS
ENVIRONMENTAL CONSULTANT/CWE
01896 - SLERP

HAYLEY SPRINGER
ENVIRONMENTAL SPECIALIST III/CWE
10584 - SLERP

NEIL HORNICK
PROFESSIONAL GEOLOGIST II
20420 - SLERP/SW/UIC

LUKE LEWIS
ENVIRONMENTAL SPECIALIST III
02719 - AIR/STW

MARC LOVALLO
ENVIRONMENTAL SPECIALIST III
11391 - AIR/PW

ANNA MCCLURE
ENVIRONMENTAL CONSULTANT
11030 - SW

PEYTON REYES
ENGINEERING SPECIALIST I
10918 - AIR/WW

ZACHARY WINKLER
ENVIRONMENTAL CONSULTANT
11209 - Air

JAKARE BROWN
OPS ENVIRONMENTAL SPECIALIST I
37934001-SW/WW

VACANT 5.8.26
ENVIRONMENTAL SPECIALIST II
11377 - SW/STW

TONYA BENNETT
ENVIRONMENTAL SPECIALIST III
20012 - STW

BONNIE BRADSHAW
ENVIRONMENTAL CONSULTANT
10969 - HW

SALYNA DYVORY
ENVIRONMENTAL SPECIALIST III
10376 - HW

KYRA FREENEY
ENVIRONMENTAL SPECIALIST II
20114 - HW

SALLY LOGAN
ENVIRONMENTAL CONSULTANT
10644 - StW

JOEL RILEY
ENVIRONMENTAL SPECIALIST III
10806 - HW

CORINNA BLACK
ENVIRONMENTAL SPECIALIST I
11439 - PW

EMERSON RAULERSON
PROFESSIONAL ENGINEER III
10392 - PW/SW

MADISON WHITE
ENVIRONMENTAL CONSULTANT
20006 - PW

CHRISTOPHER WILLIAMS
ENVIRONMENTAL SPECIALIST II
20014 - PW

KAITLYN WILLIAMS
ENVIRONMENTAL SPECIALIST II
11016 - PW

CAROLYN WRIGHT
OPS ENVIRONMENTAL SPECIALIST I
37934020- PW

TALIYAH THOMAS 5.11.26
OPS GOVERNMENT ANALYST I
37960003- PW

ROBERT FEDER
ENVIRONMENTAL SPECIALIST II
10901 - WCU

TIM FREEMAN
ENGINEERING SPECIALIST II
10908 - WCU

CONOR INSEL 5.11.26
ENVIRONMENTAL SPECIALIST I
10878 - TANKS

SYDNEY JACKSON
ENVIRONMENTAL SPECIALIST II
20745 - TANKS

GUY MCCARDLE
PROFESSIONAL GEOLOGIST I
10844 - WCU

DARRIN MCKEEHEN
PROFESSIONAL GEOLOGIST III
20102 - WCU/PCU

JENNIFER PAUL
ENVIRONMENTAL CONSULTANT
11495 - Tanks/WCU

CHASE STERLING
ENVIRONMENTAL SPECIALIST III
10645 - TANKS

WARREN PINKELTON
ENVIRONMENTAL SPECIALIST II/CWE
00027 - TANKS