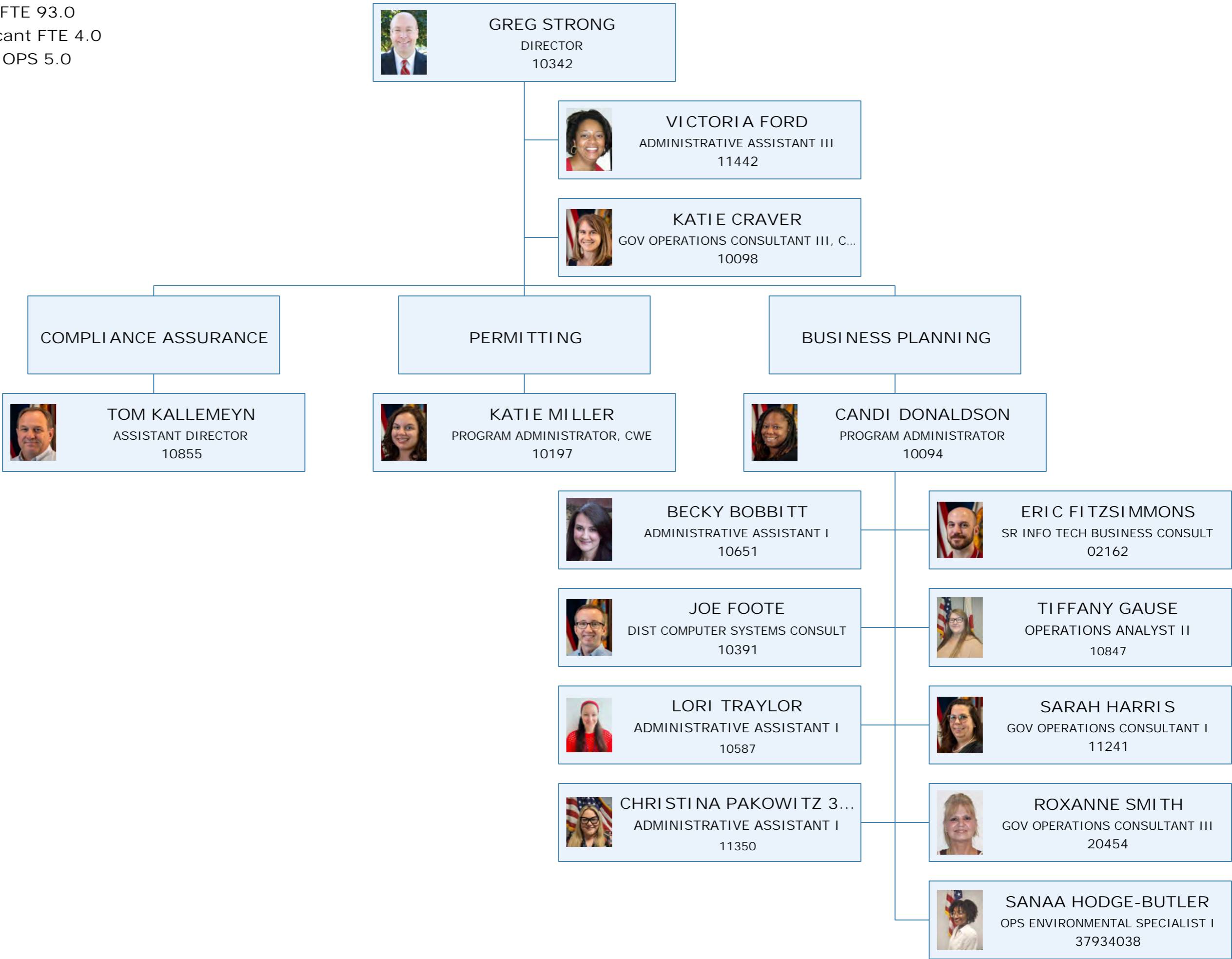


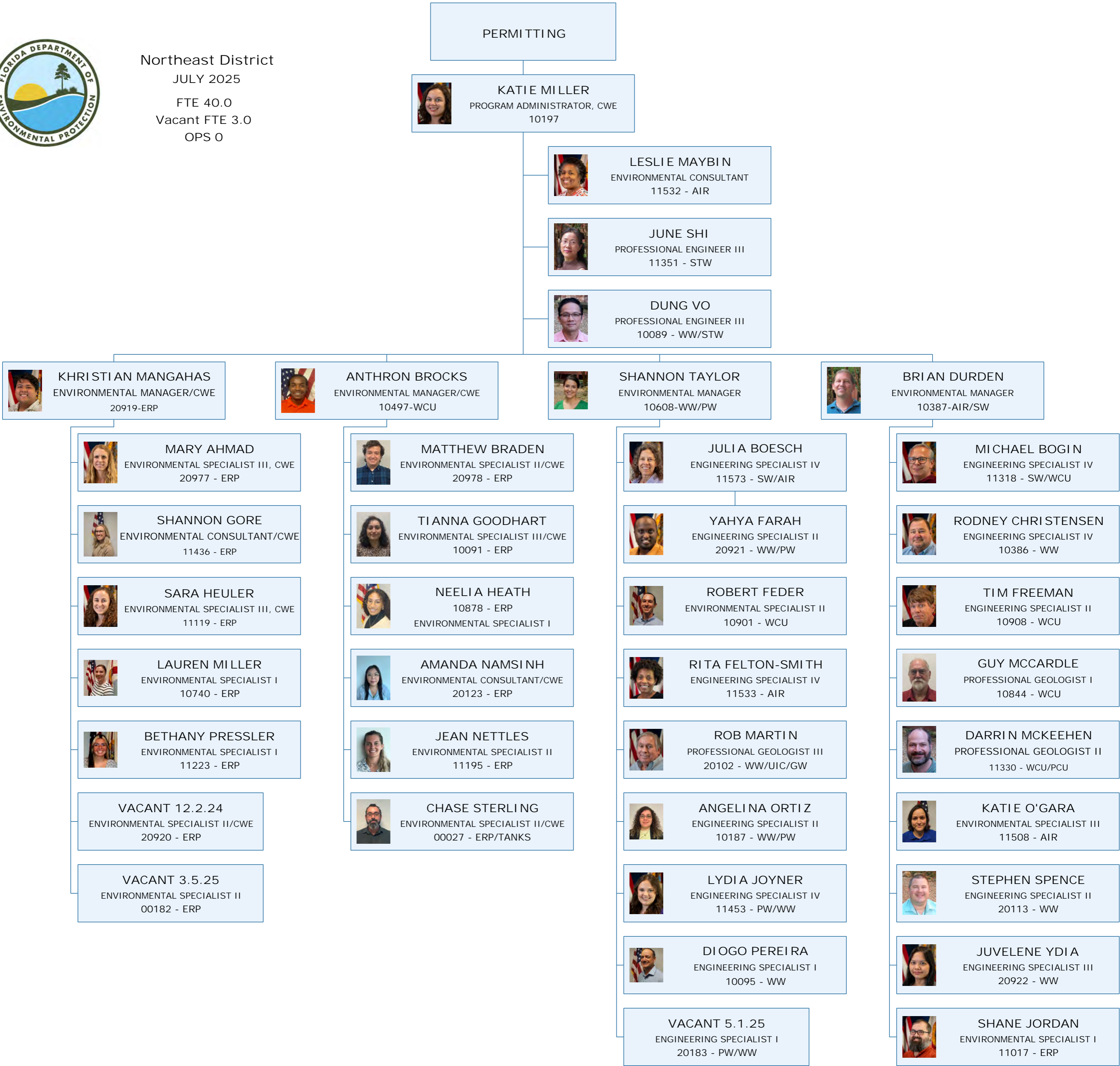


Northeast District  
JULY 2025  
  
FTE 93.0  
Vacant FTE 4.0  
OPS 5.0





Northeast District  
JULY 2025  
FTE 40.0  
Vacant FTE 3.0  
OPS 0





Northeast District  
JULY 2025  
FTE 45.0  
Vacant FTE 1.0  
OPS 4.0

