



**Florida Department of Environmental Protection**

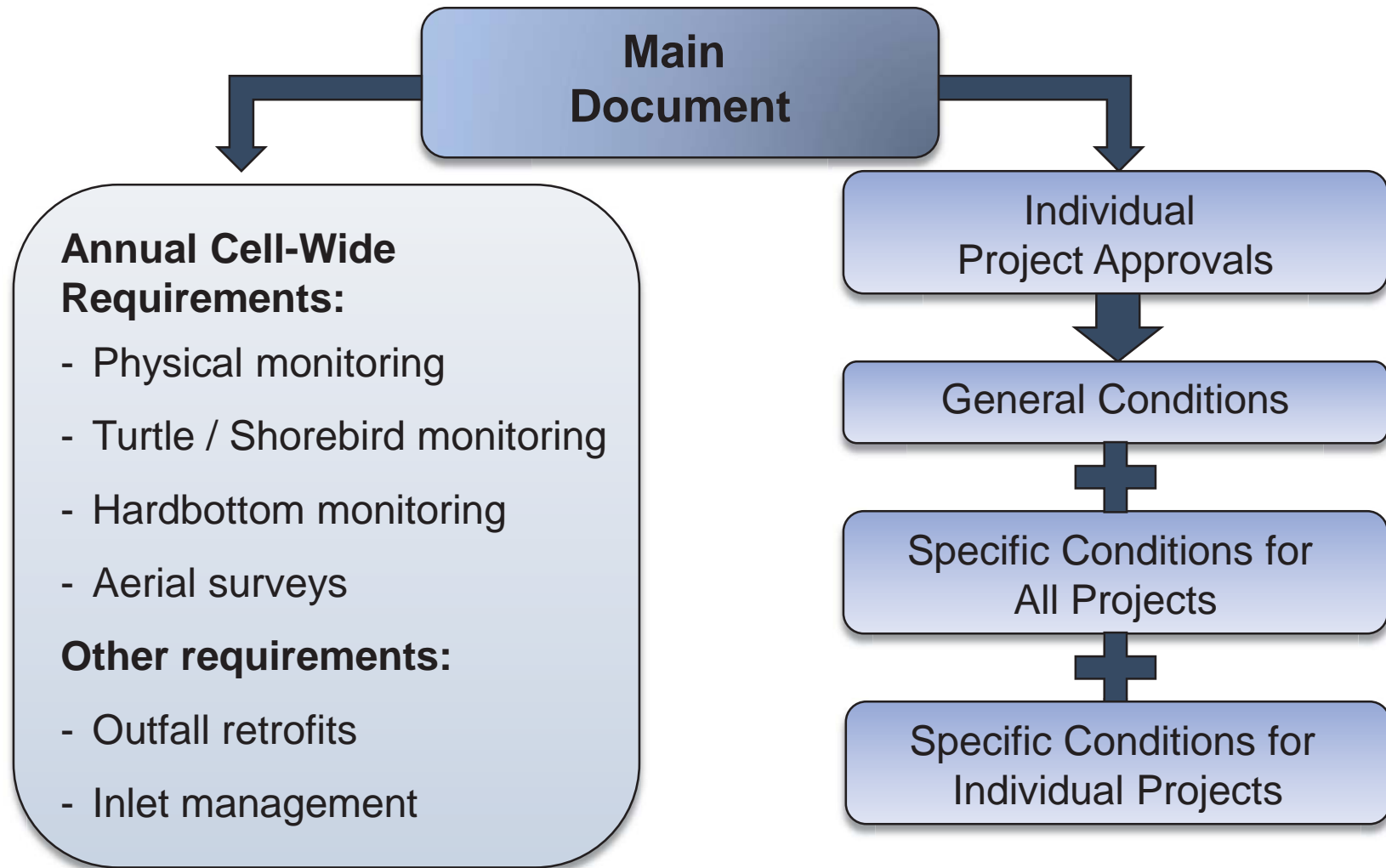
# **Beach Management Agreement Process Review**

**Beaches, Inlets and Ports Program  
December 7, 2016**





# BMA Processes at Work





# IPA Process



## Individual Project Approval (IPA)

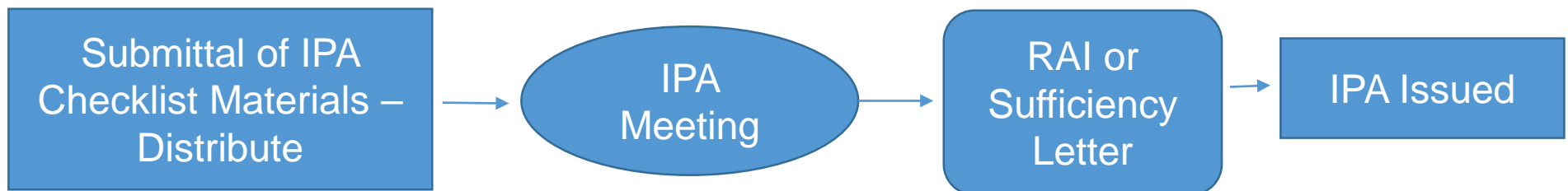
Similar to permitting process but faster and more streamlined

Check List  
Appendix F of BMA  
In-Water Projects  
Dune Restoration

BMA  
participants  
and  
reviewing  
agencies

Completeness  
cycle

Average  
time to  
issue  
1-3  
months





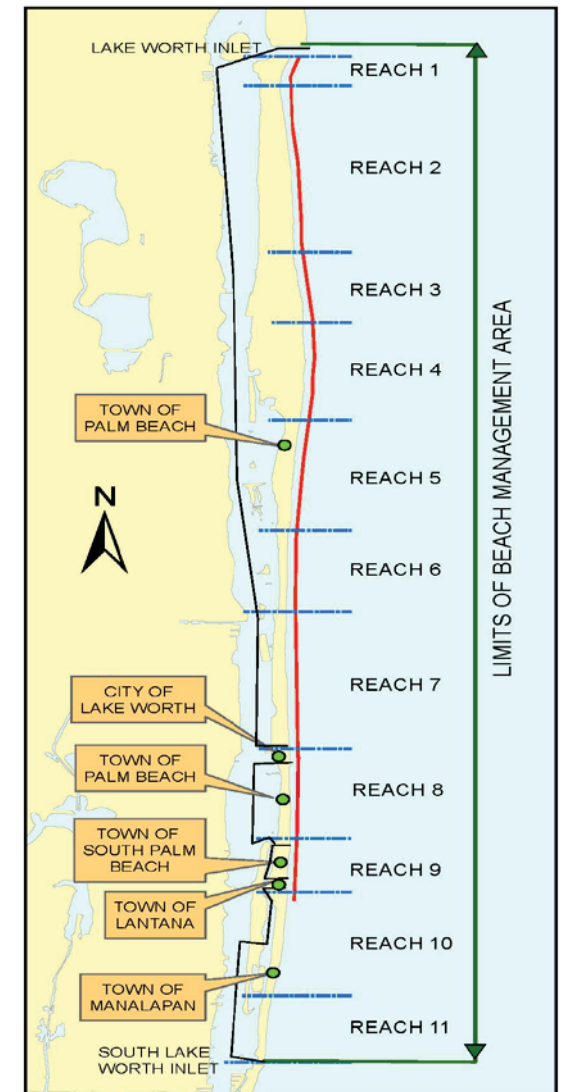
# 2016 Projects

## IPA Requests:

- Dune Project throughout the area
  - Reaches 3 and 8
  - Requested 1/5/16
  - Issued 2/29/2016

## Project Construction:

- Phipps Ocean Park Restoration
  - Two offshore BA
  - Nourishment of 1.2 miles shoreline
  - Optional dune feature
  - Optional stockpile
- Dune Restoration – Reaches 3 and 4





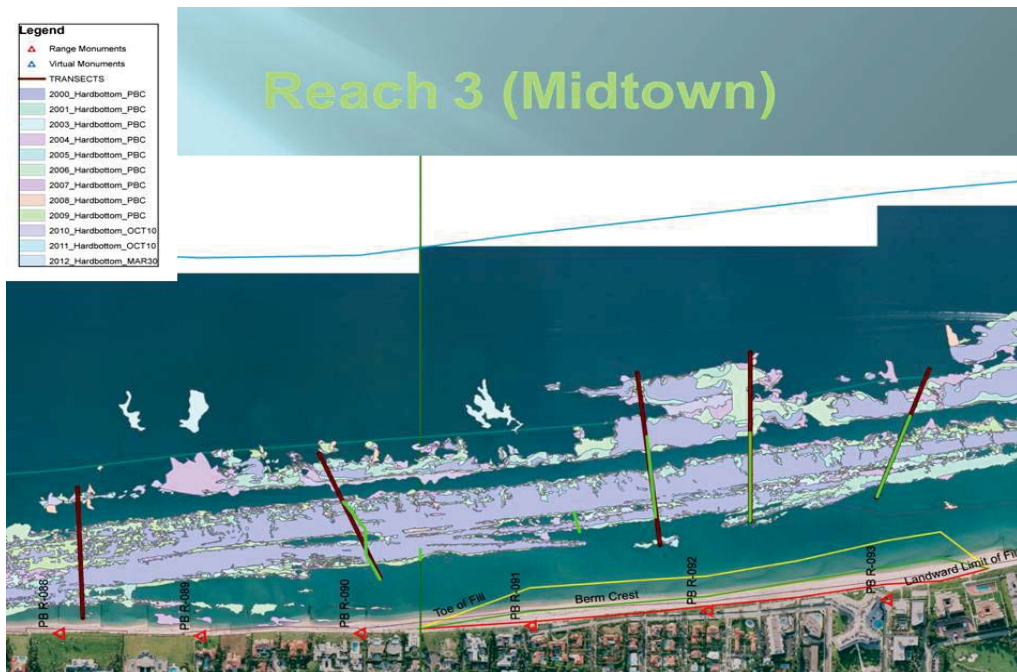
# Regulatory Status

- IPA process working well in projects that were well defined and had been constructed previously before BMA issuance
- IPA process for new work/work without federal authorization – challenging
- U.S. Army Corps of Engineers (USACE) issuing separate permits:
  - Require stand alone monitoring plan
  - IPA needed for WQC prior to issuance
  - SPBO is updated to include loggerhead designated critical habitat but not red knott
- Adaptive management underway:
  - Slight project modifications addresses efficiently



# Annual Monitoring

- Third cycle completed:
  - Physical Monitoring
  - Hardbottom Monitoring
  - Turtle / Shorebird Monitoring







# Stormwater Outfall Removal







# BMA Processes at Work

## Project Approval and Implementation

- *Better interagency coordination*
- *Permitting process flexibility*
- *Expedited permitting*
- *Alternative monitoring and reporting requirements*
- *Coordinated permitting and inspections*
- *Informal resolution of compliance issues*

## Annual Requirements / Net Ecosystem Benefits

- *Annual monitoring*
- *Stormwater retrofitting*
- *Better inlet management*





# Upcoming BMA News

- Addition of Projects / Modification of BMA:
  - South Palm Beach Island Shoreline Stabilization
  - Expanded placement area of Lake Worth Inlet Maintenance dredged material
- Addition of new regulatory transects
- Updating of conditions and adaptive management
- 5-year hardbottom monitoring review - 2018



# Questions / Updates

## **BMA Website (DEP):**

<http://www.dep.state.fl.us/beaches/pb-bma/index.htm>

## **Department Contact:**

Lainie Edwards, Ph.D.

[Lainie.Edwards@dep.state.fl.us](mailto:Lainie.Edwards@dep.state.fl.us)

850-245-7617