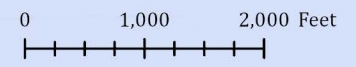




BIG TALBOT ISLAND STATE PARK

DUVAL COUNTY, FLORIDA



SURROUNDING LAND COVER

- Salt Marsh
- Forests

PARK FEATURES

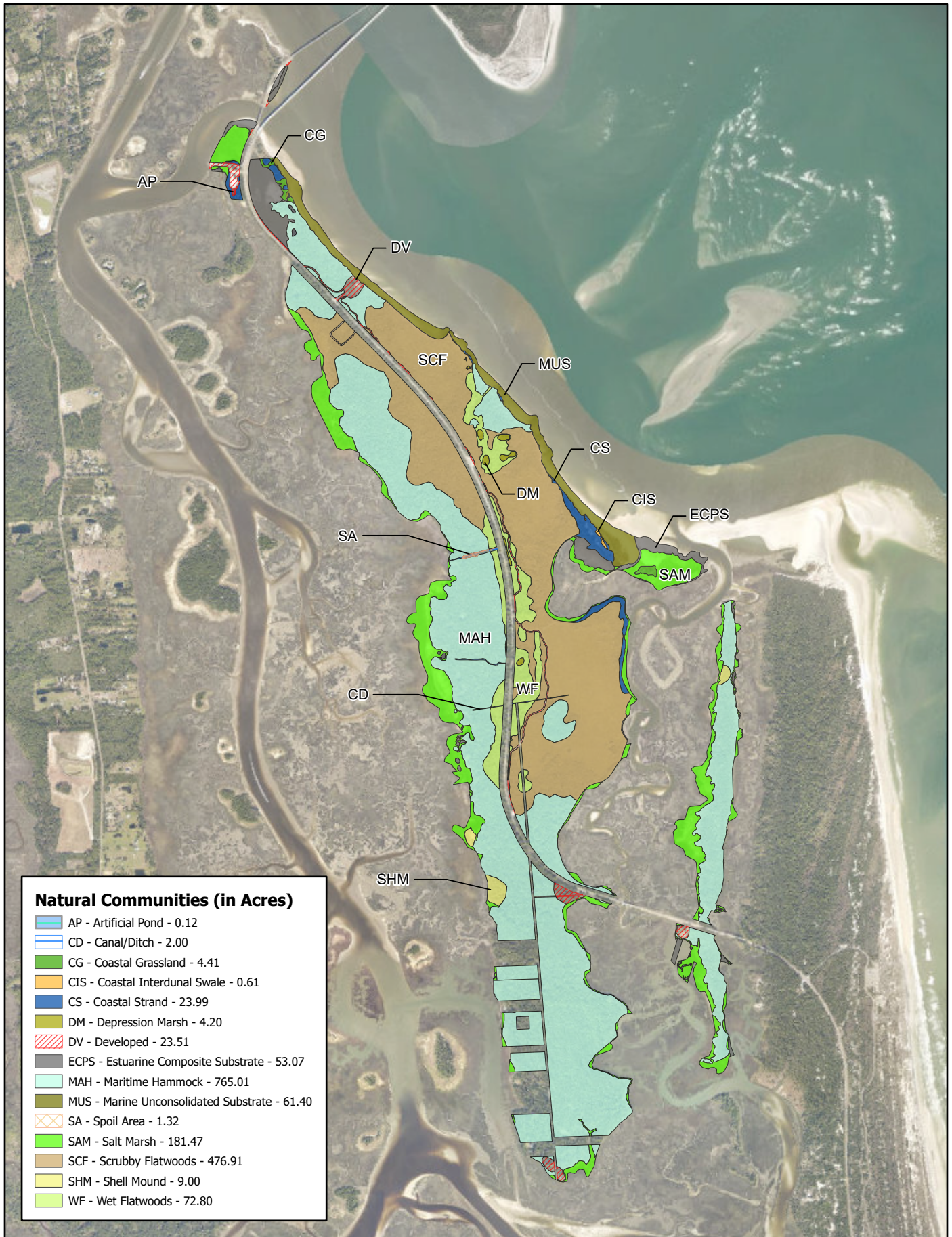
- Statewide Boundaries
- Structures
- Walkways
- Trails
- Stabilized Unpaved Park Roads
- Unstabilized Unpaved Park Roads
- Campsites

AREA SUBJECT TO CHANGE

BIRD ISLANDS

AREA SUBJECT TO CHANGE

LITTLE TALBOT ISLAND STATE PARK SUPPORT AREA



Natural Communities (in Acres)

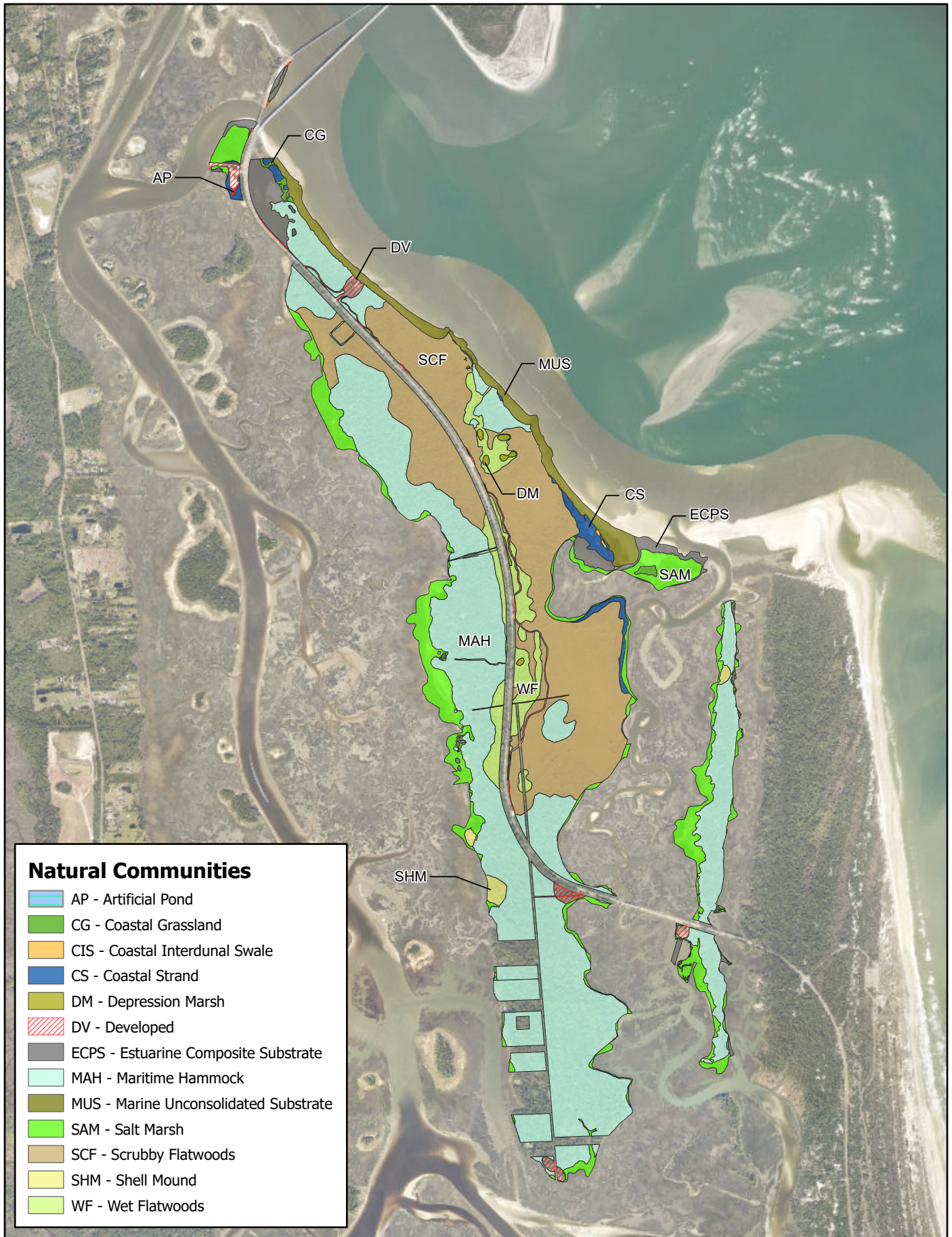
AP - Artificial Pond - 0.12
CD - Canal/Ditch - 2.00
CG - Coastal Grassland - 4.41
CIS - Coastal Interdunal Swale - 0.61
CS - Coastal Strand - 23.99
DM - Depression Marsh - 4.20
DV - Developed - 23.51
ECPS - Estuarine Composite Substrate - 53.07
MAH - Maritime Hammock - 765.01
MUS - Marine Unconsolidated Substrate - 61.40
SA - Spoil Area - 1.32
SAM - Salt Marsh - 181.47
SCF - Scrubby Flatwoods - 476.91
SHM - Shell Mound - 9.00
WF - Wet Flatwoods - 72.80



BIG TALBOT ISLAND STATE PARK Natural Communities - Existing Conditions



This graphical representation is provided for informational purposes and should not be considered authoritative for navigational, engineering, legal, and other uses.

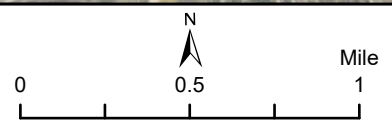


Natural Communities

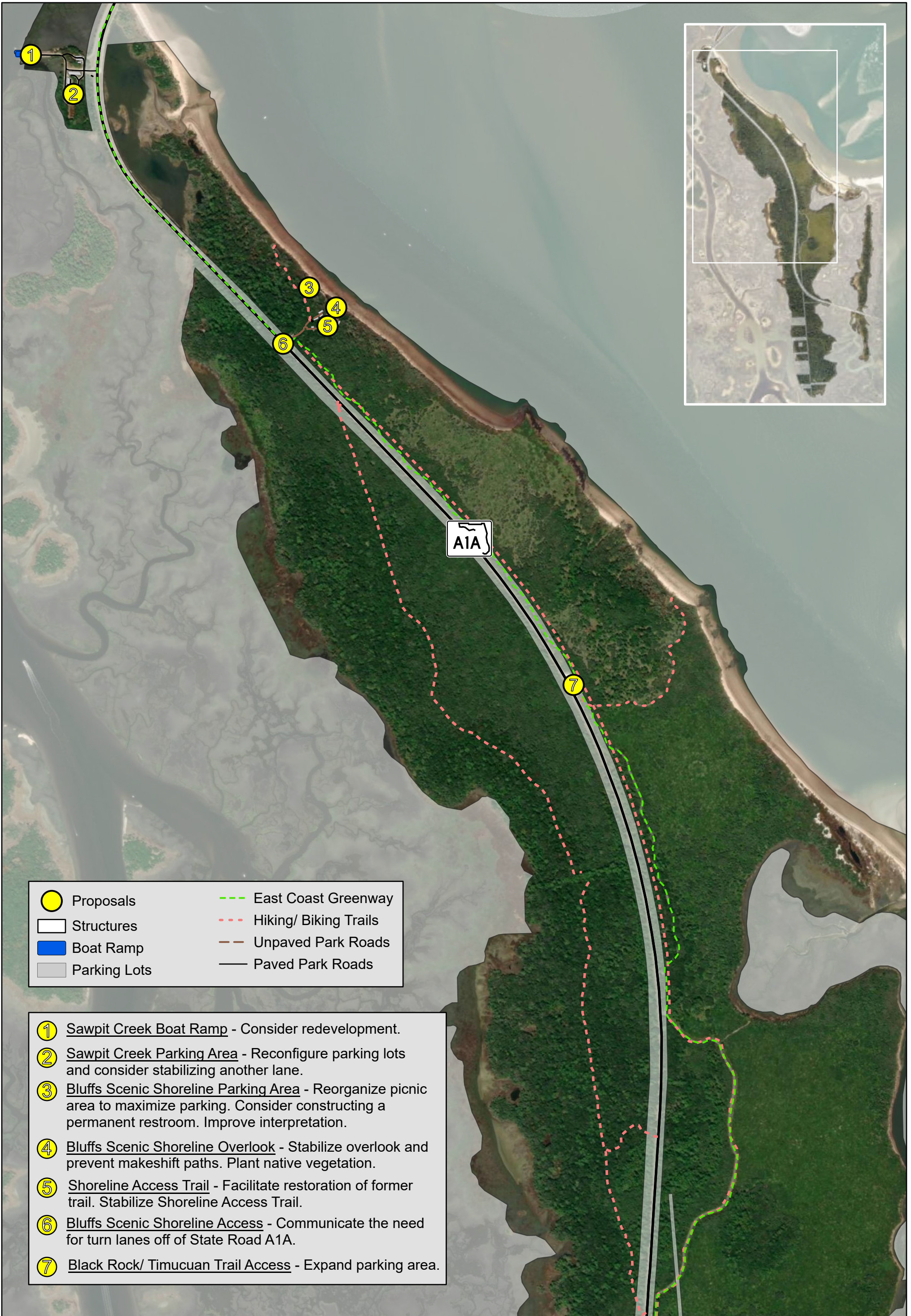
- AP - Artificial Pond
- CG - Coastal Grassland
- CIS - Coastal Interdunal Swale
- CS - Coastal Strand
- DM - Depression Marsh
- DV - Developed
- ECPS - Estuarine Composite Substrate
- MAH - Maritime Hammock
- MUS - Marine Unconsolidated Substrate
- SAM - Salt Marsh
- SCF - Scrubby Flatwoods
- SHM - Shell Mound
- WF - Wet Flatwoods





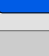
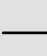
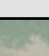
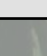


BIG TALBOT ISLAND STATE PARK
Natural Communities - Desired Future
Conditions



This graphical representation is provided for informational purposes and should not be considered authoritative for navigational, engineering, legal, and other uses.



- | | |
|--|---|
|  Proposals |  East Coast Greenway |
|  Structures |  Hiking/ Biking Trails |
|  Boat Ramp |  Unpaved Park Roads |
|  Parking Lots |  Paved Park Roads |

- 1** Sawpit Creek Boat Ramp - Consider redevelopment.
- 2** Sawpit Creek Parking Area - Reconfigure parking lots and consider stabilizing another lane.
- 3** Bluffs Scenic Shoreline Parking Area - Reorganize picnic area to maximize parking. Consider constructing a permanent restroom. Improve interpretation.
- 4** Bluffs Scenic Shoreline Overlook - Stabilize overlook and prevent makeshift paths. Plant native vegetation.
- 5** Shoreline Access Trail - Facilitate restoration of former trail. Stabilize Shoreline Access Trail.
- 6** Bluffs Scenic Shoreline Access - Communicate the need for turn lanes off of State Road A1A.
- 7** Black Rock/ Timucuan Trail Access - Expand parking area.

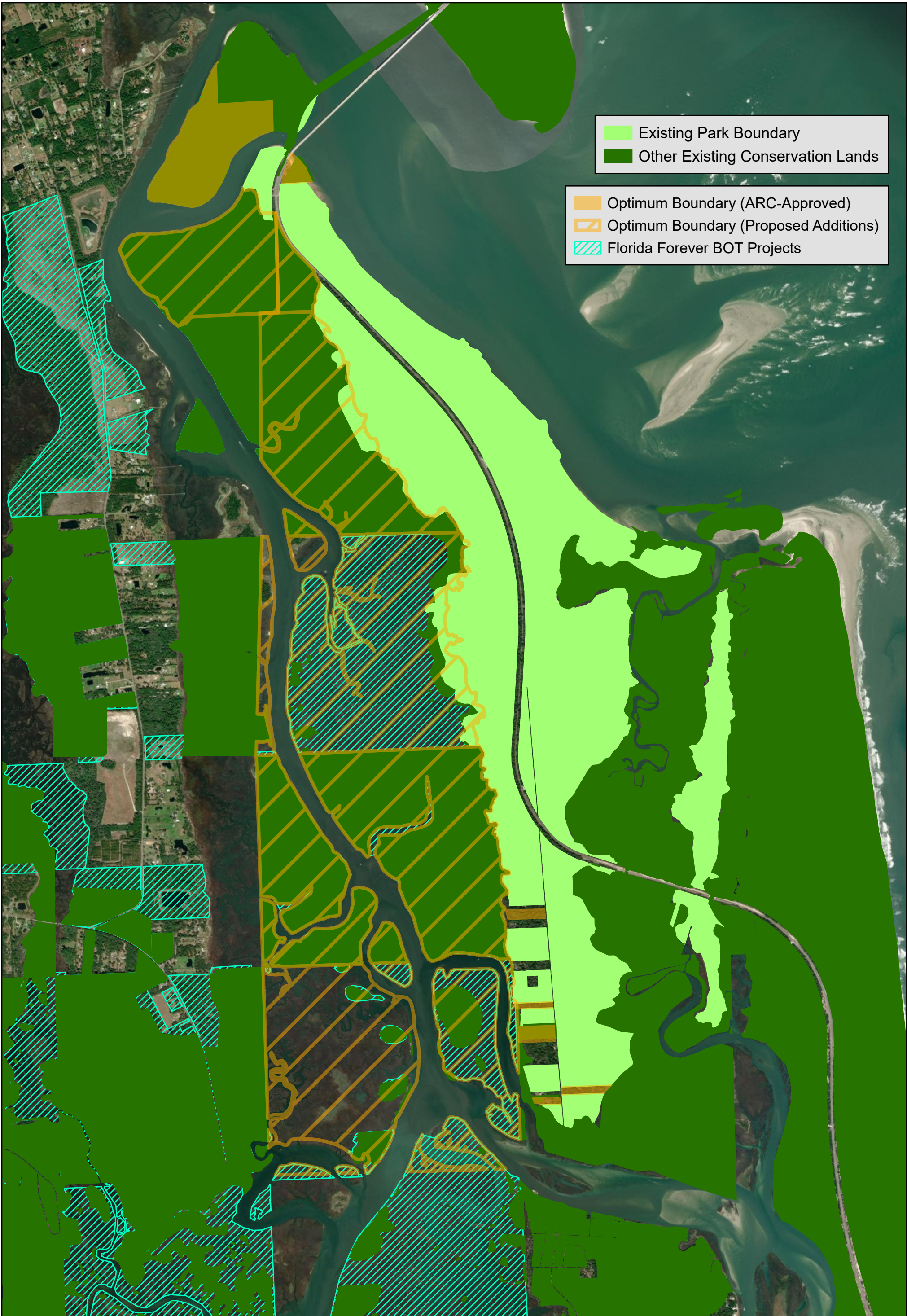


Big Talbot Island State Park

Conceptual Land Use Plan

0 1,000 2,000 Feet





Existing Park Boundary
 Other Existing Conservation Lands

Optimum Boundary (ARC-Approved)
 Optimum Boundary (Proposed Additions)
 Florida Forever BOT Projects



Big Talbot Island State Park
 Optimum Boundary

