



BLUE-GREEN ALGAL BLOOM WEEKLY UPDATE

REPORTING MARCH 27 - APRIL 2, 2020

SUMMARY

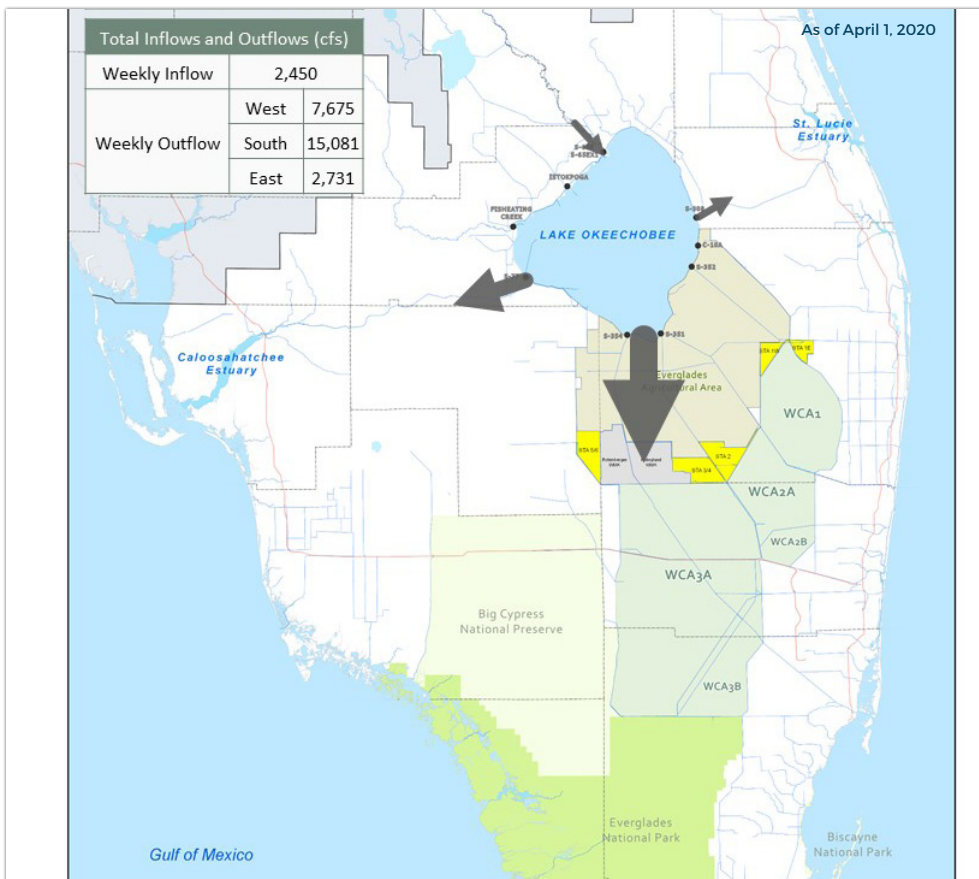
There were two reported site visits in the past seven days (3/27-4/2), with two samples collected. Algal bloom conditions were observed by the samplers at one site.

The most recent NOAA satellite imagery for Lake Okeechobee is from 4/1 and shows approximately 15% coverage of low to moderate bloom potential with some cloud cover. No significant bloom potential was observed in the 4/1 imagery for the Caloosahatchee and St. Lucie Rivers estuaries; however, some portions of the estuaries were obscured by cloud cover. Imagery from 4/1 for the St. Johns River showed low to moderate bloom potential along the northern shore of Lake George, in Crescent Lake, and on the main stem of the St. Johns River downstream of Lake George.

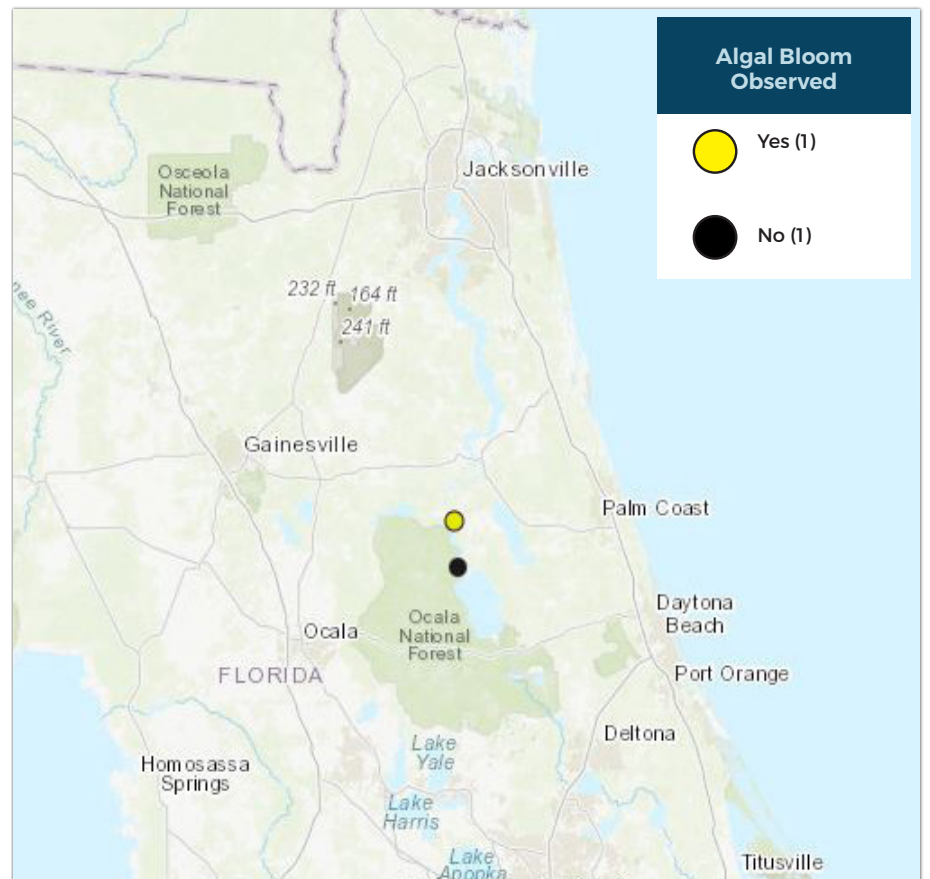
On 3/31, St. Johns River Water Management District staff collected samples from the St. Johns River at Hog Island and at Welaka Springs. The dominant taxon in both samples was *Dolichospermum circinale* but no cyanotoxins were detected in either sample.

This is a high-level summary of the sampling events for the reported week. For all field visit and analytical result details, please refer the complete algal bloom map with data table by clicking the "Field and Lab Details" Quick Link from the Algal Bloom Dashboard. Different types of blue-green algal bloom species can look different and have different impacts. However, regardless of species, many types of blue-green algae can produce toxins that can make you or your pets sick if swallowed or possibly cause skin and/or eye irritation due to contact. We advise to stay out of water where algae is visibly present as specks, mats or water is discolored pea-green, blue-green or brownish-red. Additionally, pets or livestock should not come into contact with the algal bloom-impacted water, or the algal bloom material or fish on the shoreline.

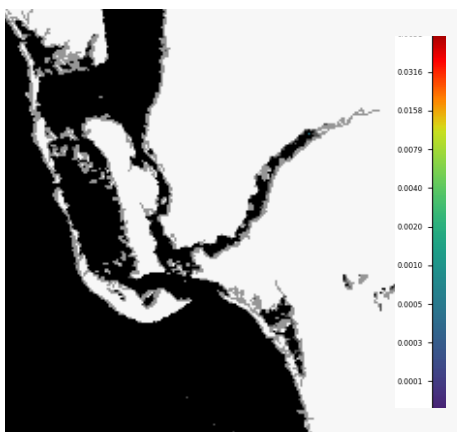
LAKE OKEECHOBEE OUTFLOWS



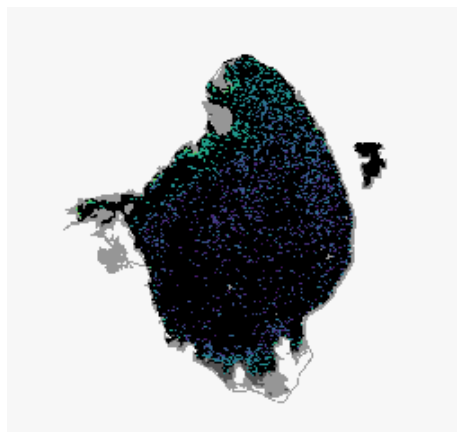
SITE VISITS FOR BLUE-GREEN ALGAE



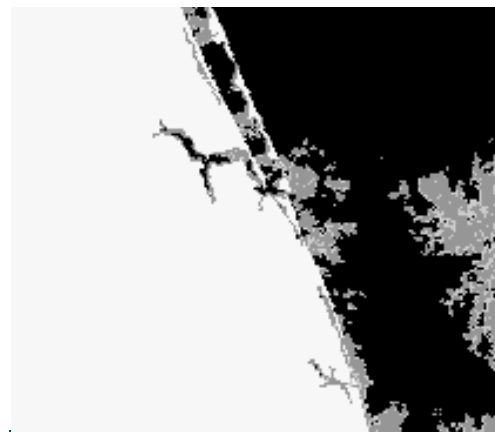
Satellite Imagery provided by NOAA - Images are impacted by cloud-cover



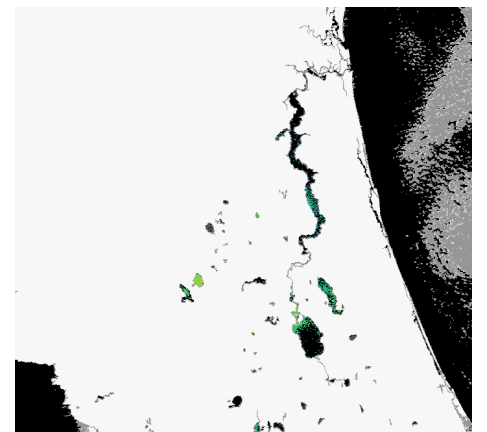
Caloosahatchee Estuary
April 1, 2020



Lake Okeechobee
April 1, 2020

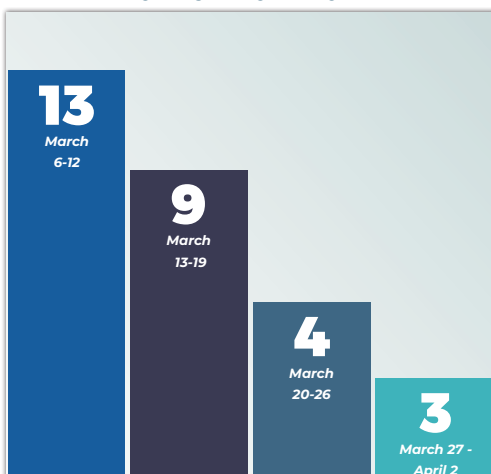


St. Lucie Estuary
April 1, 2020



St. Johns
April 1, 2020

REPORTS FROM HOTLINE



REPORT PUBLIC HEALTH ISSUES

HUMAN ILLNESS

Florida Poison Control Centers can be reached 24/7 at 800-222-1222
(DOH provides grant funding to the Florida Poison Control Centers)

OTHER PUBLIC HEALTH CONCERNS

CONTACT DOH
(DOH county office)
FloridaHealth.gov/all-county-locations.html

REPORT ALGAL BLOOMS

SALTWATER BLOOM

- Observe stranded wildlife or a fish kill
- Information about red tide and other saltwater algal blooms

CONTACT FWC
800-636-0511 (fish kills)
888-404-3922 (wildlife Alert)
MyFWC.com/RedTide

FRESHWATER BLOOM

- Observe an algal bloom in a lake or freshwater river
- Information about blue-green algal blooms

CONTACT DEP
855-305-3903
(to report freshwater blooms)
FloridaDEP.gov/AlgalBloom