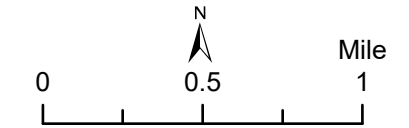


Natural Communities

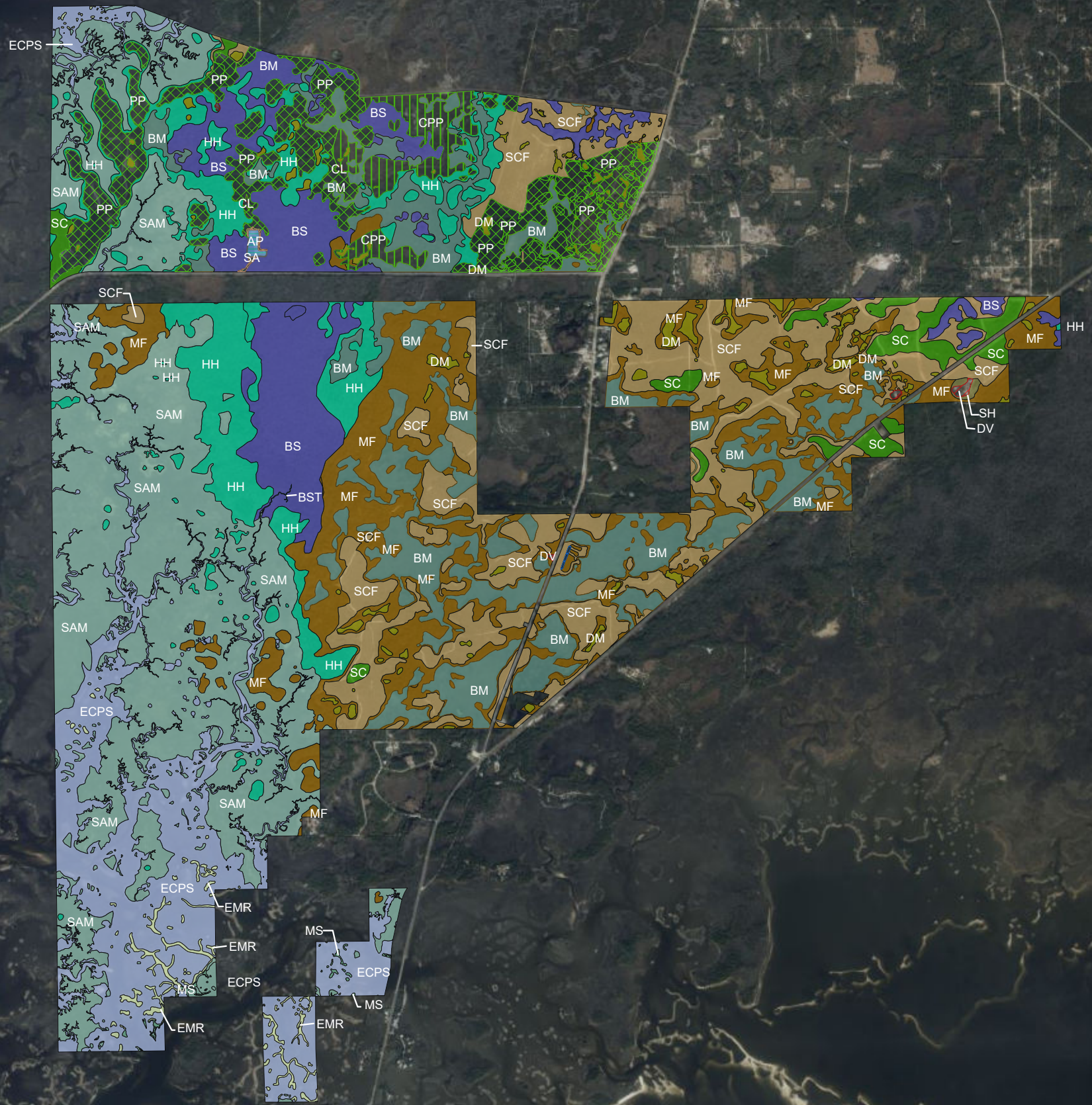
- MF - Mesic Flatwoods
- SH - Sandhill
- SC - Scrub
- SCF - Scrubby Flatwoods
- BM - Basin Marsh
- BS - Basin Swamp
- DM - Depression Marsh
- HH - Hydric Hammock
- MS - Mangrove Swamp
- SAM - Salt Marsh
- BST - Blackwater Stream
- ECPS - Estuarine Composite Substrate
- EMR - Estuarine Mollusk Reef
- AP - Artificial Pond
- DV - Developed



CEDAR KEY SCRUB STATE RESERVE
Natural Communities - Desired Future Conditions



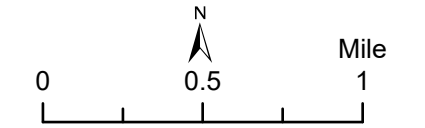
Sources: ESRI; Florida Department of Environmental Protection
 This graphical representation is provided for informational purposes and should not be considered authoritative for navigational, engineering, legal, and other uses.



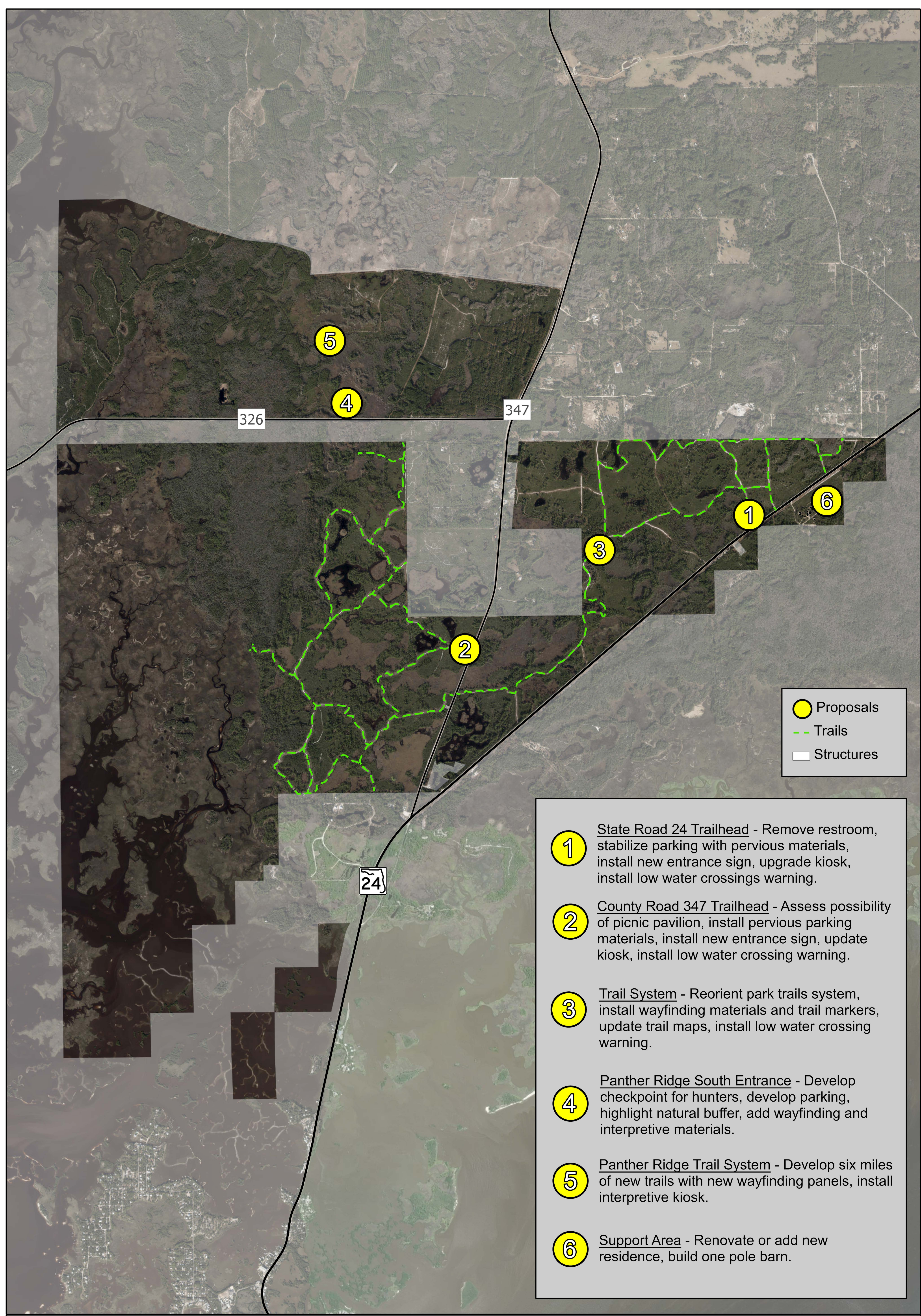
Natural Communities (in Acres)	
	MF - Mesic Flatwoods - 879.87
	SH - Sandhill - 4.30
	SC - Scrub - 136.84
	SCF - Scrubby Flatwoods - 837.75
	BM - Basin Marsh - 786.15
	BS - Basin Swamp - 523.73
	DM - Depression Marsh - 95.95
	HH - Hydric Hammock - 531.38
	MS - Mangrove Swamp - 5.64
	SAM - Salt Marsh - 1599.26
	BST - Blackwater Stream - 0.27
	ECPS - Estuarine Composite Substrate - 791.60
	EMR - Estuarine Mollusk Reef - 39.86
	AP - Artificial Pond - 4.90
	CD - Canal/ditch - 0.68
	CPP - Clearcut Pine Plantation - 106.08
	CL - Clearing/Regeneration - 1.58
	DV - Developed - 4.35
	PP - Pine Plantation - 432.22
	SA - Spoil Area - 1.89












CEDAR KEY SCRUB STATE RESERVE
Natural Communities - Existing Conditions



Sources: ESRI; Florida Department of Environmental Protection
 This graphical representation is provided for informational purposes and should not be considered authoritative for navigational, engineering, legal, and other uses.



 Proposals
 Trails
 Structures

-  **1** State Road 24 Trailhead - Remove restroom, stabilize parking with pervious materials, install new entrance sign, upgrade kiosk, install low water crossings warning.
-  **2** County Road 347 Trailhead - Assess possibility of picnic pavilion, install pervious parking materials, install new entrance sign, update kiosk, install low water crossing warning.
-  **3** Trail System - Reorient park trails system, install wayfinding materials and trail markers, update trail maps, install low water crossing warning.
-  **4** Panther Ridge South Entrance - Develop checkpoint for hunters, develop parking, highlight natural buffer, add wayfinding and interpretive materials.
-  **5** Panther Ridge Trail System - Develop six miles of new trails with new wayfinding panels, install interpretive kiosk.
-  **6** Support Area - Renovate or add new residence, build one pole barn.



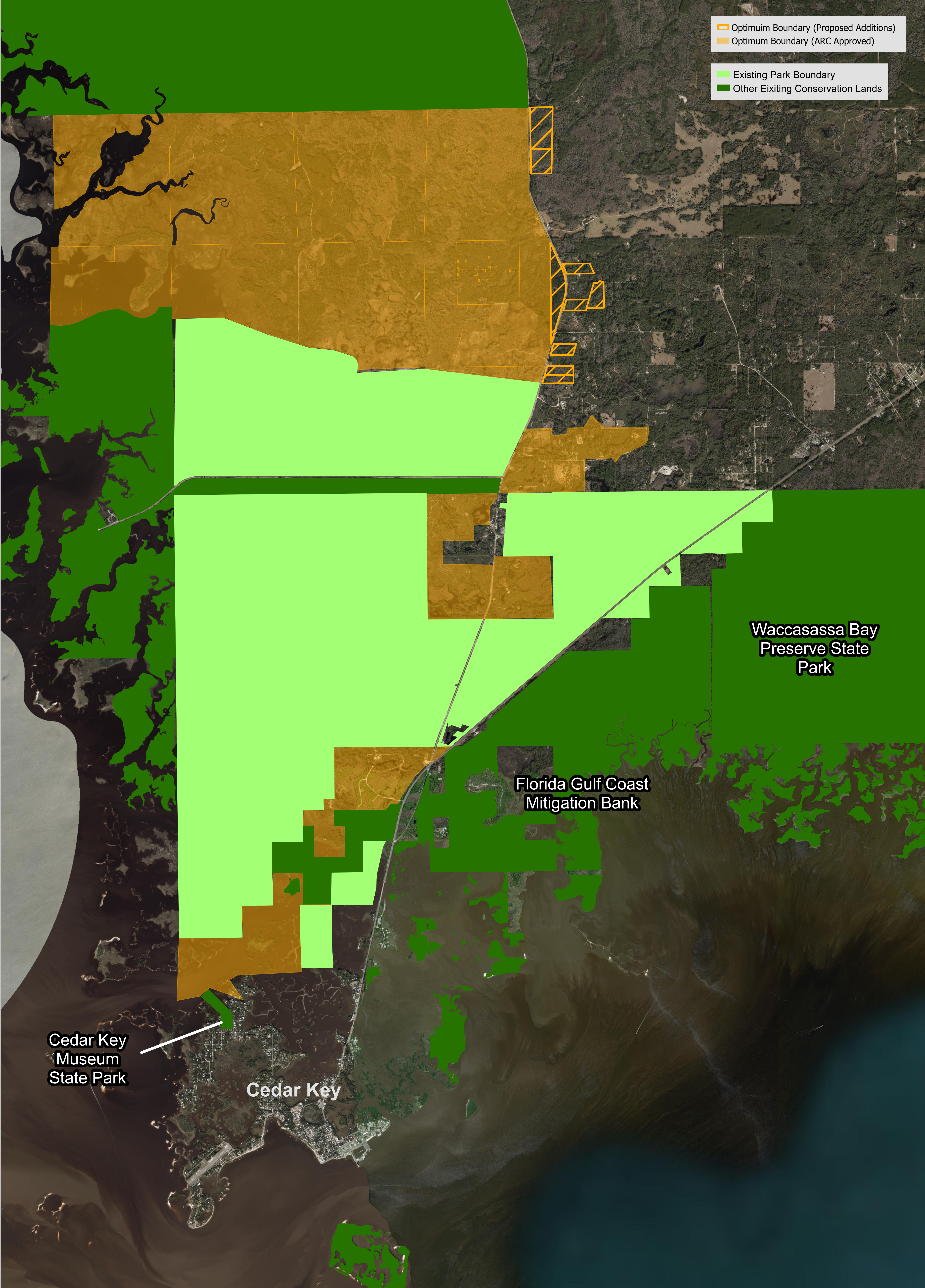
Cedar Key Scrub State Reserve

Conceptual Land Use Plan

0 0.75 1.5 Miles



- Optimum Boundary (Proposed Additions)
- Optimum Boundary (ARC Approved)
- Existing Park Boundary
- Other Existing Conservation Lands



Cedar Key
Museum
State Park

Cedar Key

Florida Gulf Coast
Mitigation Bank

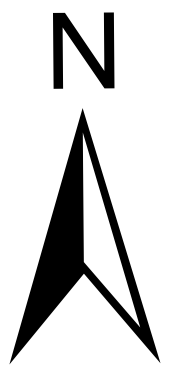
Waccasassa Bay
Preserve State
Park



Cedar Key Scrub State Reserve

Optimum Boundary Map

0 0.75 1.5 Miles

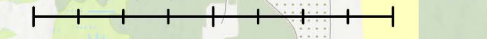




CEDAR KEY SCRUB STATE RESERVE

LEVY COUNTY, FLORIDA

0 0.5 1 Miles



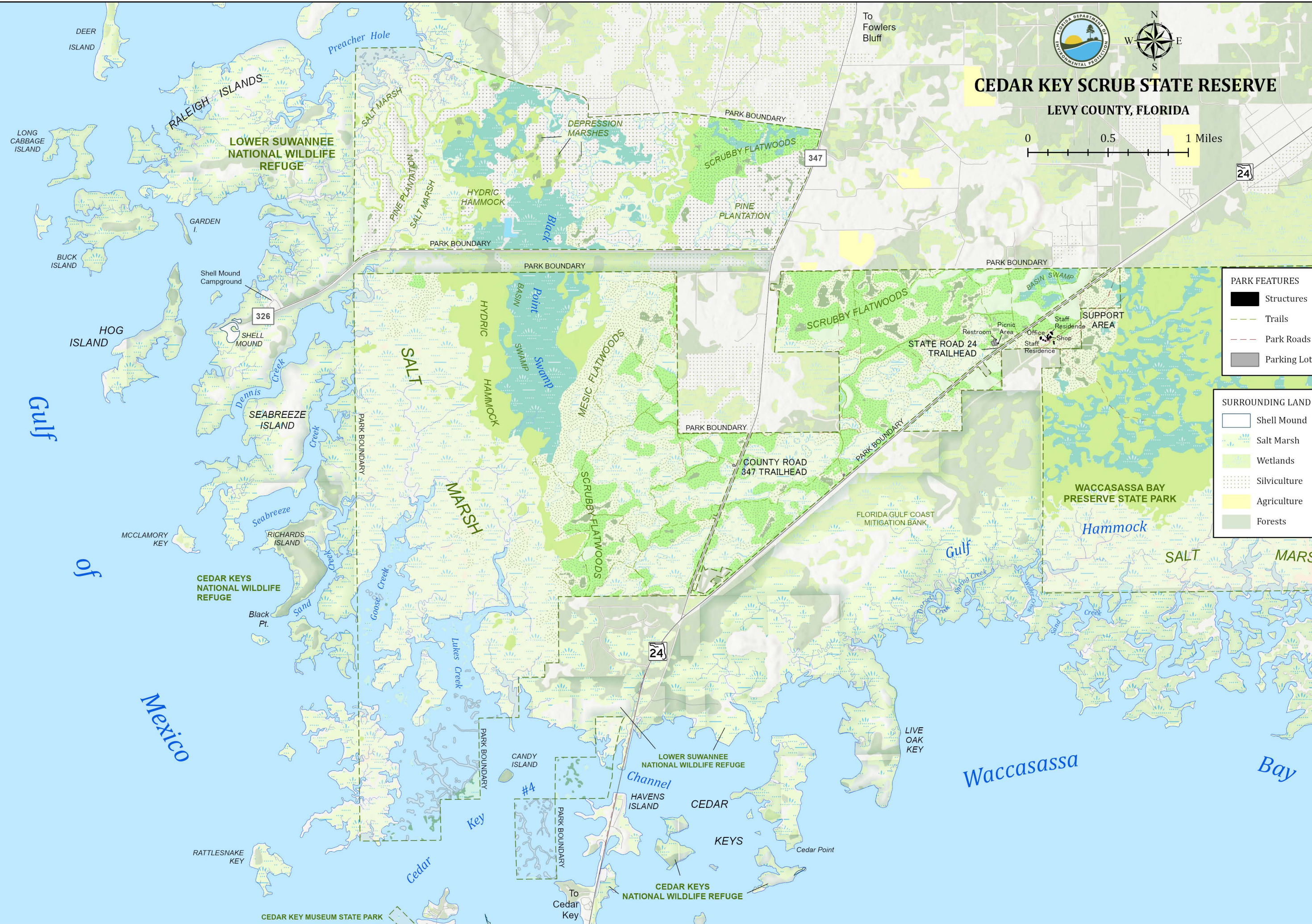
24

PARK FEATURES

- Structures
- Trails
- Park Roads
- Parking Lots

SURROUNDING LAND COVER

- Shell Mound
- Salt Marsh
- Wetlands
- Silviculture
- Agriculture
- Forests



DEER ISLAND
LONG CABBAGE ISLAND
RALEIGH ISLANDS
LOWER SUWANNEE NATIONAL WILDLIFE REFUGE
GARDEN I.
BUCK ISLAND
HOG ISLAND
SHELL MOUND
SEABREEZE ISLAND
MCCLAMORY KEY
RICHARDS ISLAND
CEDAR KEYS NATIONAL WILDLIFE REFUGE
BLACK Pt.
RATTLESNAKE KEY
CEDAR KEY MUSEUM STATE PARK

Preacher Hole
SALT MARSH
PINE PLANTATION
HYDRIC HAMMOCK
DEPRESSION MARSHES
SCRUBBY FLATWOODS
PINE PLANTATION
HYDRIC HAMMOCK
Point Basin Swamp
MESIC FLATWOODS
SCRUBBY FLATWOODS
SALT MARSH
MARSH
GOOSE CREEK
LITTLE CREEK
CANDY ISLAND
HAVENS ISLAND
CEDAR KEYS NATIONAL WILDLIFE REFUGE
CEDAR KEYS NATIONAL WILDLIFE REFUGE

To Fowlers Bluff
To Otter Creek
PARK BOUNDARY
347
STATE ROAD 24 TRAILHEAD
SUPPORT AREA
Restroom
Picnic Area
Office
Staff Residence
Shop
Staff Residence
WACCASASSA BAY PRESERVE STATE PARK
HAMMOCK
SALT MARSH
FLORIDA GULF COAST MITIGATION BANK
LIVE OAK KEY
Waccasassa Bay

Gulf of Mexico

Channel
Cedar Key
KEYS
Cedar Point