




Administration




Aaron Watkins
Director of District Management, x32963




Nathan Hess
Assistant Director, x34140
• Compliance Assurance Program



Pamela Ammon
Business Program Administrator,
x32956
• Business Program
• Budget
• Facility Operations
• HR / Administration
• Business Plan
• EDP - Budget



Reggie Phillips
Permitting Program Administrator,
x34132
• Permitting and Waste Cleanup
Program Administrator



Sarah Fayed
Government Operations Consultant III,
x34151
• Communications/Outreach
• Media and Legislative Contact
• Pollution Notification Primary Contact
• EDP - Internal Training Needs &
Budget
• Complaints/Salesforce
• SharePoint Administrator/District
Website Coordinator

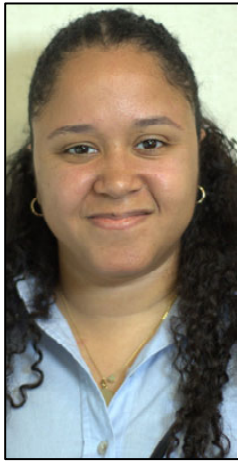
Business Program



Pamela Ammon
Program Administrator, x32956



Marcos Ruiz
Operations Manager, x32945
• Team Leader
• Inventory (Backup)



Katherine Viaud
Operations Analyst I, x34164
• Mail Centralization
• Welcome Desk (Back-up)



Alesha Cameron
Operations Analyst I, x34302
• PWS Monitoring Report
Reviewer/Data Entry



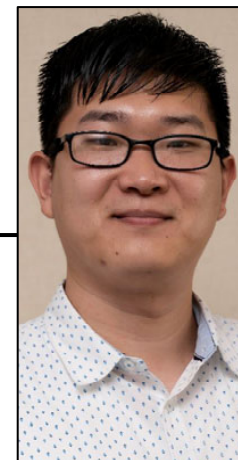
Anitra Spencer
Operations Review Specialist,
x34121
• Mail Centralization
• Application Data Entry/CRA
• Purchasing/Procurement
• Pcard Works
• Travel Authorizations (Back-up)
• Welcome Desk (Back-up)



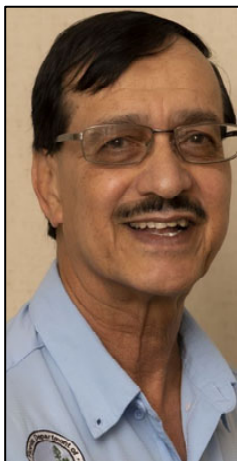
Meena Patel
Operations Analyst II, x34120
• Mail Centralization
• Email & Mail Distribution
• DMR Reviewer
• WAFR Updates
• Welcome Desk (Back-up)
• Application Data Entry/CRA



Barbara Browning
Operations Analyst I, x34142
• Welcome Desk
• Scanner and Oculus entry



Don Nam
Distributed Computer Systems
Consultant, x34325
• IT
• Inventory



Shabbir Rizvi
Operations Analyst I, x34153
• Mail Centralization
• Scanner and Oculus entry
• Asbestos Notifications
• WAFR Updates
• Welcome Desk (Back-up)
• Email & Mail Distribution



Daun Festa
Operations Review Specialist,
x32946
• Mail Centralization
• Fleet Management (Back-up)
• Travel Authorizations
• Welcome Desk (Back-up)
• Purchasing/Procurement
• PF LMS Training
• Environmental School
• Cherwell Trainer
• Public Records Requests



Kaitlynn Wilson
Operations Analyst I, x32920
• Mail Centralization
• Welcome Desk (Back-up)



Vilmaris Diaz-Gonzalez
Operations Analyst I, x32949
• Mail Centralization
• Application Data Entry/CRA
• Scanner and Oculus entry
• Welcome Desk (Back-up)



Jill Smicherko
Operations Analyst I, x32965
• PWS Monitoring Report
Reviewer/Data Entry
• Email & Mail Distribution
• Mail Centralization



Tamar Dundas
Operations Analyst I, x34142
• Email & Mail Distribution
• Application Data Entry/CRA
(Back-up)



Kalli Johnson
Operations Analyst I, x32962
• Mail Centralization
• Welcome Desk (Back-up)



Vincent Gibney
OPS/Environmental Specialist I,
x34171
• Fleet Management
• DMR Reviewer
• PWS Monitoring Report
Reviewer/Data Entry

Compliance Assurance Program



Nathan Hess
Assistant Director/Compliance Assurance Program, x34140



Daniel Hall
Environmental Manager, x34167



David Smicherko
Environmental Manager, x34169



Jenny Farrell
Environmental Manager, x34173



Jill Farris
Environmental Administrator, x34136



Charlie Nolan
Env Sp III, x32913
• SLERC/ERP (Training)



Addison Adkins
Env Sp I, x32940
• Wastewater (Training)
• Potable Water Inspections (Training)



Adam Mirajkar
Env Sp II, x32930
• SLERC/ERP



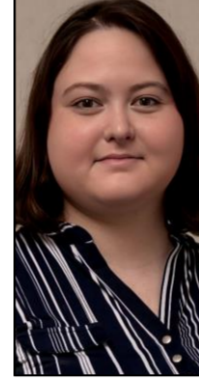
Hailey Ambrose
Env Consultant, x34336
• SLERC/State Lands
• CWE
• Solid Waste



Gina Laddick
Env Sp II, x34309
• Wastewater
• Hazardous Waste
• UIC



Hannah VanBuren
Env Sp II, x34146
• Wastewater
• Potable Water Monitoring
• Potable Water Inspections



Aimee Pezzino
Env Sp I, x34301
• Potable Water Monitoring (Training)
• Potable Water Inspections (Training)



Jennifer Parker
Env Sp III, x32906
• NPDES Stormwater (Training)
• Air
• Hazardous Waste



Jessinya Harris
Env Sp I, x 34129
• Potable Water Monitoring (Training)
• Wastewater (Training)



Ismael Reyes
Env Sp I, x 4337
• Wastewater (Training)
• Grease
• UIC



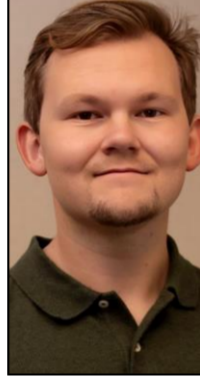
Carly Cogburn
Env Sp II, x34320
• Potable Water Inspections
• Potable Water Monitoring
• Hazardous Waste (Training)



Jessica Jones
Env Sp II, x32967
• Tanks
• Potable Water Monitoring



Kage Horvath
Env Sp II, x34334
• Air (Training)
• Potable Water Inspections
• NPDES Stormwater (Training)



Kevin Kacperowski
OPS Env Sp I, x32929
• Potable Water Monitoring (Training)
• Wastewater (Training)



Courtney Puckett
Env Sp III, x34313
• SLERC/State Lands
• CWE
• Tanks



Jordan Evans
Env Sp I, x34119
• SLERC/State Lands (Training)



Lisa Colon
Env Sp I, 32918
• Potable Water Inspections (Training)
• Potable Water Monitoring (Training)



Mary Rogers
Env Sp III, x34339
• SLERC/State Lands
• Solid Waste



David Janson
Env Sp II, x34141
• Potable Water Monitoring
• NPDES Stormwater (Training)
• Solid Waste (Training)



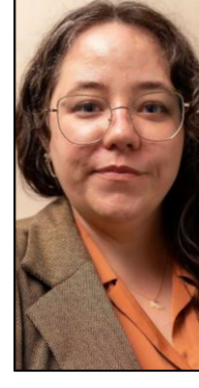
Katie Badolato
Eng Sp II, x32914
• Potable Water Inspections
• Potable Water Monitoring



Talia Ayala
Env Consultant, x34307
• NPDES Stormwater
• Air
• Potable Water Inspections



Phil Kane
Env Sp III, x34156
• Wastewater
• Solid Waste



Faith Willis
Env Sp II, x34338
• Tanks
• NPDES Stormwater
• Potable Water Monitoring



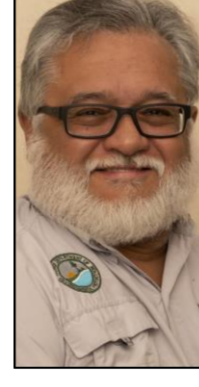
Kim Seidl
Env Consultant, x34315
• SLERC/State Lands
• CWE
• NPDES Stormwater



Trey Stamm
Env Sp I, x34168
• Wastewater
• Tanks (Training)



Wanda Robles
Env Sp II, x34126
• NPDES Stormwater
• Air
• Hazardous Waste



Manny Cardona
Env Consultant, x34134
• Potable Water Inspections
• Wastewater
• Potable Water Monitoring
• Solid Waste



Krysia Simmons
OPS Env Sp II, x32923
• Potable Water Monitoring (Training)
• NPDES Stormwater (Training)
• Wastewater (Training)



Zachary Duran
Env Sp II, x34102
• Tanks (Training)
• NPDES Stormwater (Training)



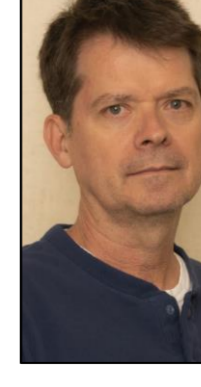
Mara Galvez
Env Sp II, x34330
• SLERC/ERP (Training)



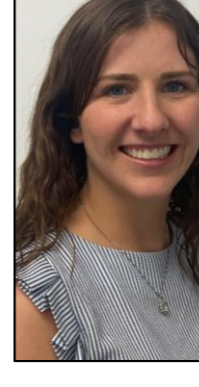
Lindsey Brunell
Env Sp I, x32942
• Potable Water Inspections (Training)
• Potable Water Monitoring (Training)



Robby Hill
OPS Env Sp I, x34159
• Wastewater (Training)




Michael Eckoff
Env Consultant, x34308
• Hazardous Waste
• Solid Waste
• Wastewater



Taylor Haslam
OPS Env Sp I, x32964
• Potable Water Monitoring (Training)
• Wastewater (Training)

Permitting Program




Reggie Phillips
Program Administrator, x34132




Allison Chancy Cothran
Environmental Manager, x32968



Jason Seyfert
Environmental Administrator, x34344



Lu Burson
Environmental Administrator, x32912




Teayann Duclos
Environmental Manager, x32911



Cindy Stafford
Planner II, x34157

- Siting Coordination Liaison
- BMAP Coordinator
- Functional Org Charts (Visio)
- EzDMR Contact
- Expiring Permit Notifications




Alton J Smith
Env Consultant, x34346

- DW Facility Permitting
- DW Facility Permitting
- State Land Permitting
- IW Permitting
- DW Biosolids Permitting




Alicia Lowenstein
Env Sp III, x34312

- ERP Permitting - Expert
- State Land Coordination - Expert
- CWE




Alex Courneya
Env Consultant, x32916

- Waste Cleanup
- Petroleum Cleanup Program
- Groundwater



Alexandra Davis
Env Sp II, x34305

- ERP Permitting
- State Land Coordination




Chuck LeGros
Env Consultant, x34158

- DW Facility Permitting - Expert
- DW Collection Systems
- DW Biosolids Permitting - Expert
- DW Facility Permitting - Expert
- IW Permitting



Bilal Ansari
Env Sp II, x32921

- ERP Permitting
- State Land Coordination
- PW Distribution System Permitting




Anil Desai
PG III, x34116

- Groundwater - Expert
- UIC Compliance - Expert
- Petroleum Cleanup Program - Expert
- Waste Cleanup




Angelica Sterner
Env Sp III, x34340

- CWE
- ERP Permitting
- State Land Coordination




Drake Brown
Eng Sp III, x34342

- PW Distribution System Permitting
- PW Facility Permitting
- PW Distribution System Clearances




Dan Shideler
Eng Sp IV, x34133

- PW Distribution System Permitting
- PW Facility Permitting - Expert
- ERP Stormwater Permitting - Expert
- CAP/Permitting Inspections




Dale Melton
Env Consultant, x34326

- Solid Waste Compliance Monitoring - Expert
- Waste Cleanup - Expert
- Groundwater (solid waste) - Expert




Johanna Packer
Env Sp II, x32915

- ERP Permitting
- State Land Coordination




Joyce Gonzalez
Env Sp III, x32957

- DW Collection Systems
- PW Distribution System Permitting
- PW Distribution System Clearances



Imirio Perez
Env Sp III, x34322

- ERP Permitting - Expert
- State Land Coordination - Expert




Johanna Gambrell Leonard
Env Sp III, x34130

- Waste Cleanup
- Petroleum Cleanup Program



Katrina Schultz
Env Sp II, x34341

- ERP Permitting
- State Land Coordination



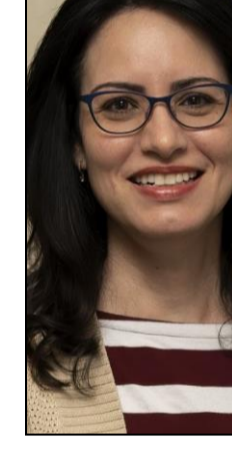
Margarita Hernandez
Eng Sp II, x34107

- DW Facility Permitting
- DW Collection Systems
- IW Permitting



Kelvin Jauregui
Env Sp I, x32924

- ERP Permitting
- State Land Coordination



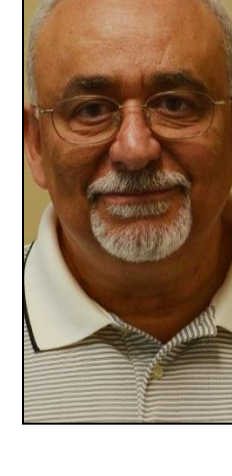
Maria Labrador
Eng Sp III, x34327

- Waste Cleanup - Expert
- Brownfields
- NPDES Wastewater Compliance




Leo Anglerio
Eng Sp IV, x32953

- ERP Stormwater Permitting - Expert
- DW Collection Systems
- State Land Coordination




Osama Mahmoud
Eng Sp II, x34125

- DW Collection Systems
- PW Distribution System Permitting
- PW Facility Permitting




Stephen Rice
OPS Env Sp I, x34170

- CWE




Roger Sussko
Eng Sp IV, x34176

- Waste Cleanup - Expert
- Brownfields
- Petroleum Cleanup Program



Megan Cahill
Eng Sp II, x34128

- ERP Permitting
- State Land Coordination



Pamala Yates
OPS Env Sp I, x32937

- PW Distribution System Permitting
- PW Facility Permitting
- PW Distribution System Clearances



Zoey Carr
Env Sp II, x32933

- ERP Permitting - Expert
- State Land Coordination - Expert
- CWE



Tracy Jewsbury
PE II, x34323

- Waste Cleanup - Expert
- Brownfields
- Petroleum Cleanup Program




Melanie Wharton
Env Sp II, x32952

- ERP Permitting
- State Land Coordination



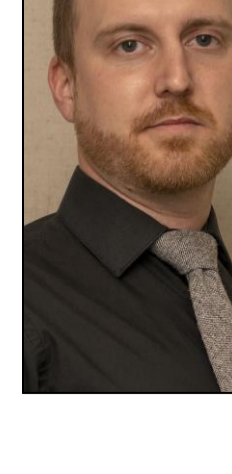
Randall Cunningham
Eng Sp III, x34152

- IW Permitting - Expert
- DW Collection Systems
- DW Facility Permitting
- Solid Waste Permitting




Nico Garces
OPS Env Sp II, x34345

- ERP Permitting



William Craig
Eng Sp III, x34329

- DW Collection Systems
- ERP Permitting
- State Land Permitting
- PW Distribution System Permitting
- PW Distribution System Clearances



William Gillett
Env Sp II, x34131

- DW Collection Systems
- DW Facility Permitting
- IW Permitting