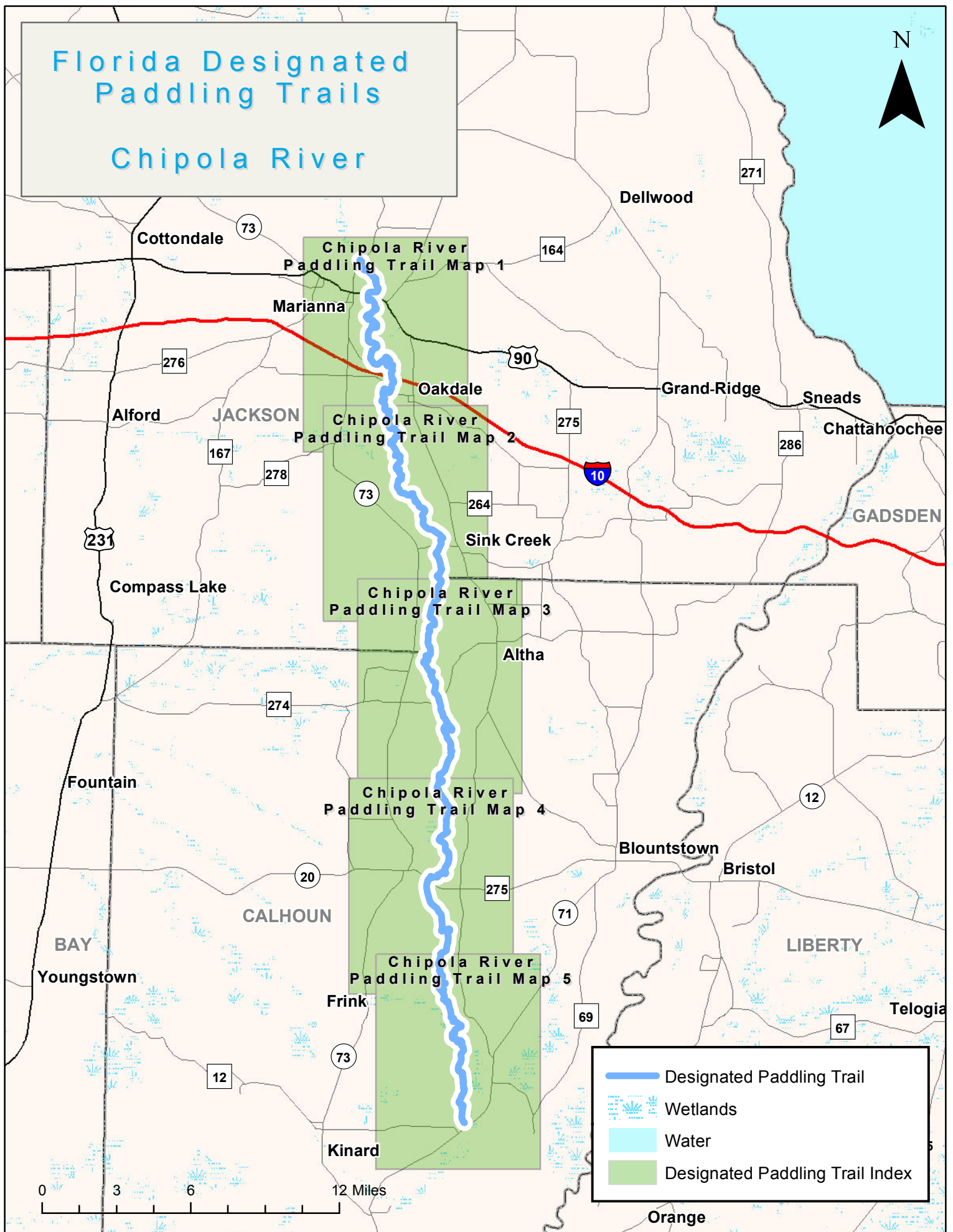
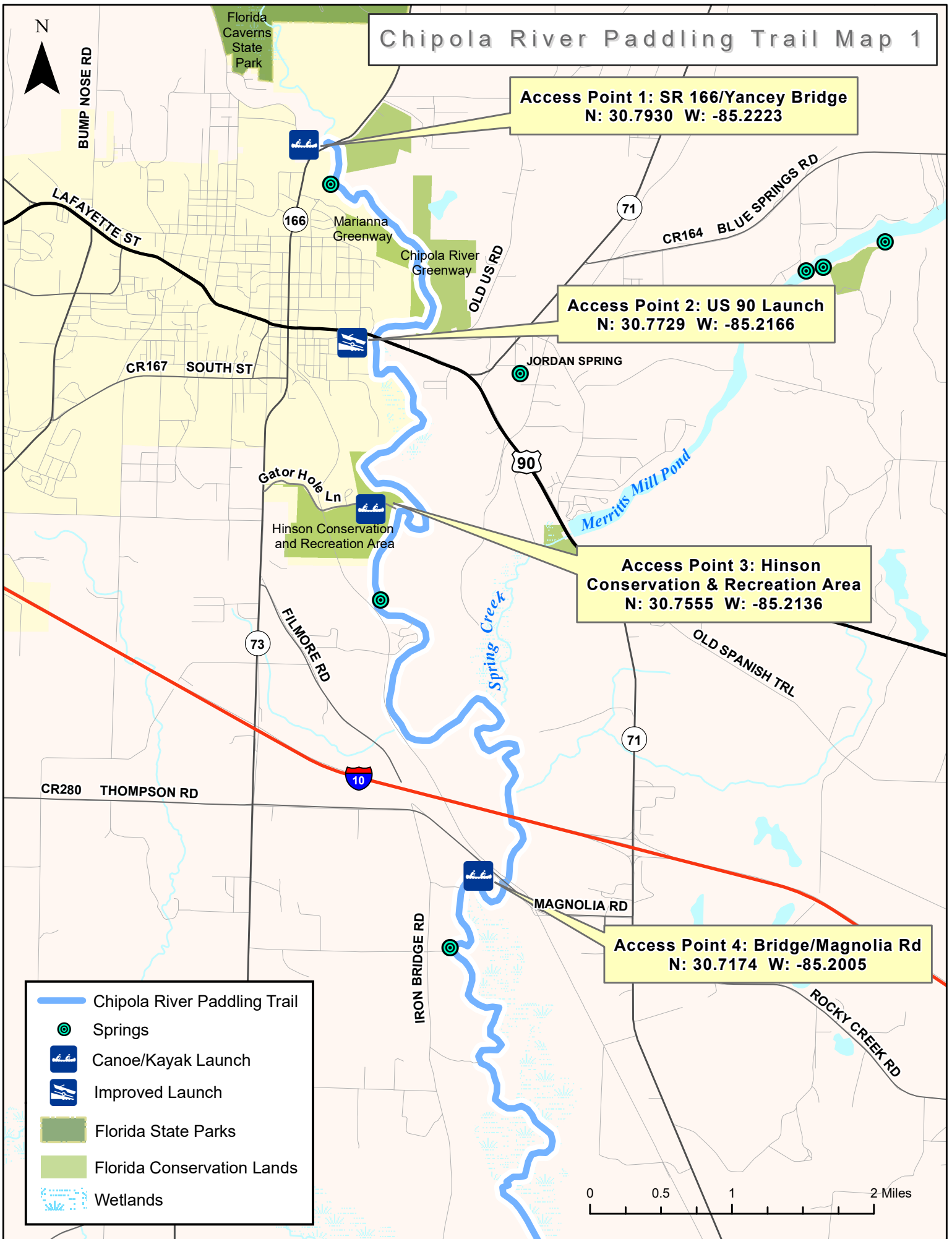


Florida Designated Paddling Trails

Chipola River



Chipola River Paddling Trail Map 1



Chipola River Paddling Trail Map 2



CR 280
ROCKY CREEK RD

71

IRON BRIDGE RD

Palm Island Campsite
N: 30.6601 W: -85.1952

MADDOX RD

73

CR 264
SUNCREST RD

Access Point 5: SR 278 Bridge/Peacock Bridge Road
N: 30.6275 W: -85.1653

PEACOCK BRIDGE RD

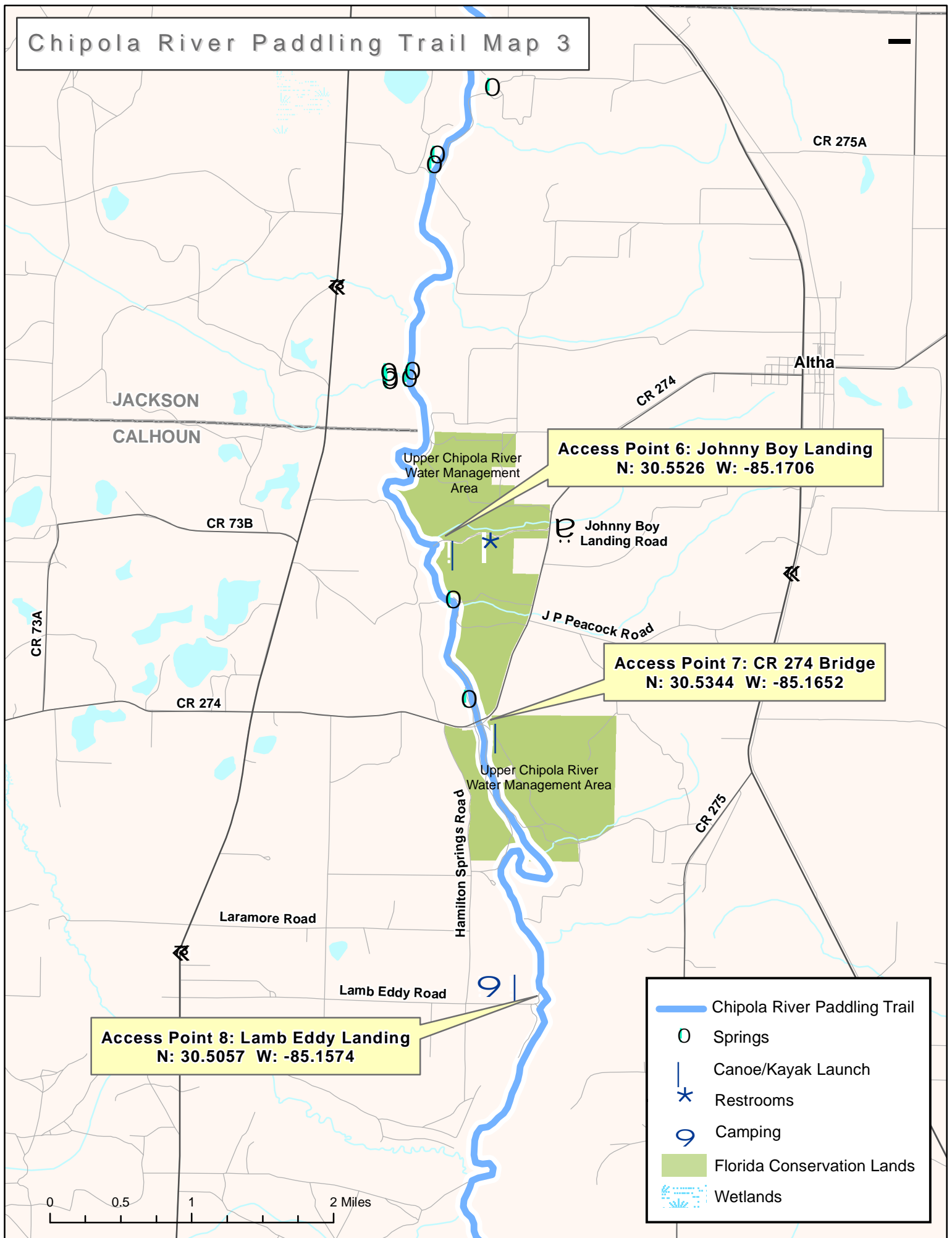
CR 278

JACKSON
CALHOUN

-  Chipola River Paddling Trail
-  Springs
-  Canoe/Kayak Launch
-  Wetlands

0 0.5 1 2 Miles

Chipola River Paddling Trail Map 3



Chipola River Paddling Trail Map 4



NW WHITEWATER GRADE

CR 287

73

NEWSOME RD

MAGNOLIA CHURCH RD

20

Clarksville

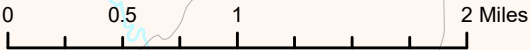
Access Point 9: SR 20 Bridge
N: 30.4316 W: -85.1716

20

73

CR 275

Frink



- Chipola River Paddling Trail
- Canoe/Kayak Launch
- Restrooms
- Potable Water
- Wetlands

Chipola River Paddling Trail Map 5



Access Point 10: Jehue Landing
N: 30.3571 W: -85.1568

JEHUE LANDING RD

CR 275

SW CARLOS PEAVY RD

71

SW MCCLELLAN FARM RD

71

CR 275

SE CD CLARK RD

Access Point 11: SR 71 Bridge/Scott's Ferry
N: 30.2877 W: -85.1443



- Chipola River Paddling Trail
- Canoe/Kayak Launch
- Camping
- Restrooms
- Potable Water
- Wetlands

CR 392

SE ANDERSON RD

SE IOLA RD





Chipola River Paddling Trail Guide

The Waterway

Fed by numerous springs, this scenic 51-mile paddling trail flows through high bluffs, river swamps and hardwood forests, with few signs of humanity along most of the river. Chipola River is photographer's delight with colorful fall foliage, spring wildflowers and abundant wildlife. The water alters color from clear gold to an opal-like blue, with crystal clear springs tucked along the river. Limestone bluffs and caves, part of the unique karst geology, add to the unique beauty of the Chipola River.

The Paddling Experience

The Chipola is a paddlers' dream and is generally suitable for beginners, depending on segment selected. A lack of overnight campsites is the limiting factor in planning a long-distance trip. A private landowner has agreed to allow camping at a small island near the confluence of Dry Creek known as Palm Island, a few miles upstream of the Peacock Bridge. It will remain open to public use as long as it is not abused. Please pack out all your trash and leave it cleaner than you found it. Primitive camping is also allowed at Lamb Eddy County Park. Several shoals are present, especially during low water, and should be attempted only by intermediate paddlers. Paddlers should scout the shoal known as "Look and Tremble Falls" below the State Road 274 Bridge and portage if necessary depending on water levels. Paddling the river not recommended for beginners if [gauge](#) height is above 12 feet.

Access Points

#1, Start of trail, Yancey Bridge, CR 166

Access is an improved boat ramp in a small roadside park with no amenities, southwest side of Yancey Bridge crossing the Chipola River. *From I-10 go north on SR 71, west on US 90, north on SR 166 (follow signs to Florida Caverns State Park), the launch is on the left side of the bridge, just before crossing the river.*

#2, Mile 2.2, US 90 Bridge, Marianna

A steep paved incline leads to an access adjacent to US 90 Bridge on the southwest side. There is a deep drop off just beyond the ramp's edge. Hand launching only. You must carry boat and gear 130 yards from parking. For accessibility assistance call 850-526-3125.

#3, Mile 4.5, Hinson Conservation Recreation Area (CRA),

This area makes for a great rest stop with hiking/biking trails, picnic tables on high banks and is a site on the [Great Florida Birding Trail](#). About 2.5 miles downstream from Hinson CRA the river is joined by Spring Creek which may become crowded with tubers in the summer until they exit at Bear Paw Outfitters near Magnolia Bridge. *From US 90 in Marianna, take SR 73 South (S Jefferson St.) about 1.2 miles. Turn left on Gator Hole Lane, which leads to the park and the launch.*



Chipola River Paddling Trail Guide

#4, Mile 10, Magnolia Bridge

This is a remote site and not advisable to leave a vehicle here overnight. [Bear Paw Outfitters](#) is located just upstream from the bridge. *Directions: From US 90 or I-10, exit on SR 71 and travel south, (from the I-10 exit it is only 0.5 miles south on SR 71), turn right on Magnolia Rd, go about 1.5 miles, boat ramp is on the left, just after the bridge.*

Mile 16.2, Palm Island Primitive Camping

Just north of the confluence of Dry Creek lies a small private island suitable for primitive camping. There are no amenities and the owner graciously allows public use. Please leave it better than you found it so the opportunity will continue.

#5, Mile 20, Peacock Bridge

This is a remote site and not advisable to leave a vehicle here overnight. *From US 90 or I-10, exit on SR 71 and travel south to CR 278 (about 7 miles south of I-10 exit). Turn right on CR 278, go a mile to the boat landing on southeast side of the bridge.*

#6, Mile 26.5, Johnny Boy Landing

This is a popular local swimming hole and launch site for [Chipola River Outfitters](#). The river may become crowded on weekends with tubers from here to Lamb Eddy County Park. This section includes the 'Look and Tremble' Shoals that should be scouted prior to running on the left side. *Directions: From US 90 or I-10, go south on SR 71 to CR 274 in the town of Altha. Turn right, go 2.3 miles. Turn right on Johnny Boy Landing Road, less than a mile to the boat ramp.*

#7, Mile 28, CR 274 Bridge

Not recommended to launch here but a good rest stop. Parking and picnic tables are on both sides of the bridge. Hike a pleasant stretch of the Florida National Scenic Trail ([hyperlink](#)) is on the east side of the river. *From U.S. 90 or I-10, exit on SR 71, go south to CR 274 (about 11 miles south of I-10 exit). Turn right on CR 274 in Altha and go about 3.8 miles.*

#8, Mile 31, Lamb Eddy County Park

Primitive camping is allowed here but there are no restrooms or other amenities. *From US 90 or I-10, exit on SR 71, go south to CR 274 (about 11 miles south of I-10 exit). Turn right on CR 274 in Altha and travel west to cross over bridge about 3.8 miles. Turn left on Hamilton Springs Road. Go 2 miles and turn left onto Lamb Eddy Road and follow a mile to park.*

#9, Mile, 38, SR 20 Bridge

Access is an improved ramp in small county park with restrooms and picnic pavilions. *From US 90 or I-10, exit on SR 71, go south to CR 275, (about 14 miles south of the I-10 exit). Continue 7 miles to SR 20, turn west and go 1.3 miles to the northwest side of the bridge.*

#10, Mile 44 Jehue Landing,

This is a remote access and leaving vehicles here overnight may not be safe. *Directions: From US 90 or I-10, exit on SR 71, go south to CR 275, (14 miles south of the I-10 exit). Bear right on CR 275 about 13 miles. Turn right on Jehue Landing Road. Continue half mile on unpaved road.*

#11, End of Trail, Mile 51, Scott's Ferry, SR 71 Bridge

Scott's Ferry is a private campground with cabins, campsites, improved access and a small country store with canoe and kayak rentals. *From US 90 or I-10, exit on SR 71, go south to CR 275, (about*



Chipola River Paddling Trail Guide

14 miles south of the I-10 exit). Right on CR 275 and continue to intersection to reconnect with SR 71 (about 15 miles). Turn right (south) 3 miles to northeast side of bridge (private ramp with fee). Note: Below Scott's Ferry, the river flows through the Dead Lakes. Most of this region is part of the [Apalachicola River Blueway](#). Map and GPS or compass is recommended to navigate through the Dead Lakes. More Dead Lakes information can be found [here](#).

Outfitters and Shuttle Service

[Bear Paw Adventures](#) (850) 482-4948

[Chipola River Outfitters](#) (850) 762-2800, Cell (850) 381-6062

Base Camp

[Florida Caverns State Park](#) is an excellent place to make a base camp and explore the natural wonders of the region. It is a site on the [Great Florida Birding Trail](#), offering excellent wildlife viewing. The [Upper Chipola River](#) is also a 4.5-mile designated paddling trail that ends in the state park. Canoes and kayaks can be rented here. This is one of the few state parks with dry (air-filled) caves and is the only state park in Florida to offer cave tours to the public. The Florida Cavern has dazzling formations of limestone stalactites, stalagmites, soda straws, flowstones and draperies. The park is popular for camping, picnicking, geocaching, fishing, hiking, horseback riding, and swimming at the Blue Hole Springs. The park also features a nine-hole, New Deal-era golf course set in beautiful rolling terrain. Other interesting historic structures were built by the [Civilian Conservation Corps](#) (CCC) to provide jobs to men during the Great Depression.

