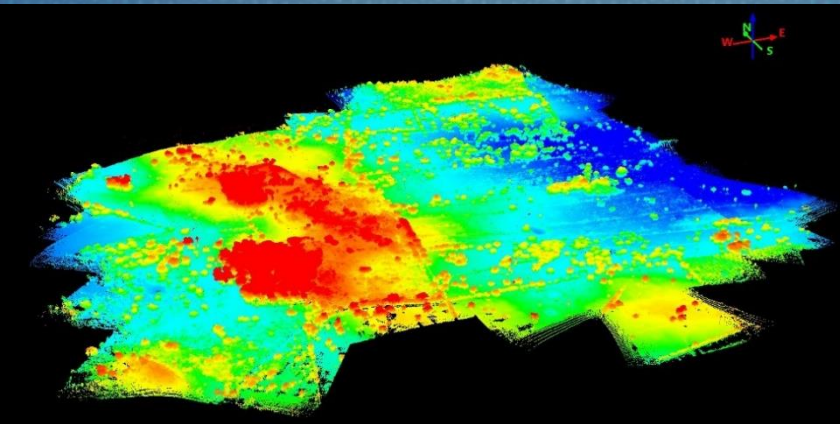


# Florida Institute for Built Environment Resilience (FIBER)

College of Design, Construction & Planning



Director, David Hulse – Professor, School of Landscape Architecture and Planning  
Associate Director, Jeff Carney - Associate Professor, School of Architecture  
Jason Von Meding – Associate Professor, Rinker School of Construction Management  
Timothy Murtha – Associate Professor, School of Landscape Architecture and Planning  
Yan Wang – Assistant Professor, School of Landscape Architecture and Planning  
Ryan Sharston – Assistant Professor, School of Architecture, Rinker School of Construction Management  
Lisa Platt – Assistant Professor, Department of Interior Design  
Madeline Brown – Postdoctoral Associate, FIBER  
Carla Brisotto– Postdoctoral Associate, FIBER  
Cleary Larkin– Postdoctoral Associate, FIBER  
Eve Bohnett-Doctoral Student, FIBER  
Fang Yao-Doctoral Student, FIBER  
Keila Silva – Research Administrator II

## FACULTY RESEARCH DOMAINS

---

MISSION: We seek to advance knowledge of resilience, empowering people to thrive in a complex and changing world. FIBER is committed to the design, planning, construction and management of resilient built environments, with strong interests in the well-being of the people and communities who inhabit them. The Institute spans built environment disciplines and beyond, generating new knowledge and responding to emerging challenges through evidence-based research and practice. We're working to establish strong connections among resilience researchers, policy makers and practitioners in universities, across the State of Florida, and around the world.

### Landscapes & Communities:

- Embedding resilience in innovative urban design solutions
- Community narratives
- Impacts of climate change

### Infrastructure Systems:

- Distributed energy systems
- Socio-technical systems design
- Critical infrastructure systems

### Building and Facility Systems:

- Design for health & productivity
- Use of renewable resources
- Innovative materials research/reuse

### Technology:

- Modeling and simulation
- Systems thinking/approaches
- Smart cities

## FLORIDA RESILIENT CITIES PROGRAM: PORT ST. JOE

---

Florida Resilient Cities (FRC) helps communities across Florida develop the capacity to be more prepared for, and more resilient to increased risk. Led by FIBER, the program bridges community needs with design research through the College of Design, Construction and Planning, partnered with faculty from across the University of Florida. An intensive partnership lasting 15-18 months, FRC seeks lasting impacts, through ongoing research that contributes to a network of resilient communities across Florida.



Through generous support from the Jessie Ball DuPont Fund, the first FRC team -- including FIBER, the Shimberg Center for Housing Studies, and The Center for Landscape Conservation and Planning at UF -- has begun working with the City of Port St. Joe and its surrounding region to continue recovery from Hurricane Michael and generate long-term resilience.

- Integration with ongoing recovery efforts
- Introductory community workshops in Fall 2019
- 6-8 research/course-based projects in Spring 2020
- Implementation Summit in Fall 2020