

East Coast Greenway (ECG) Southeast Region

Miami-Dade/Broward/Palm Beach/Martin/St. Lucie/Indian River



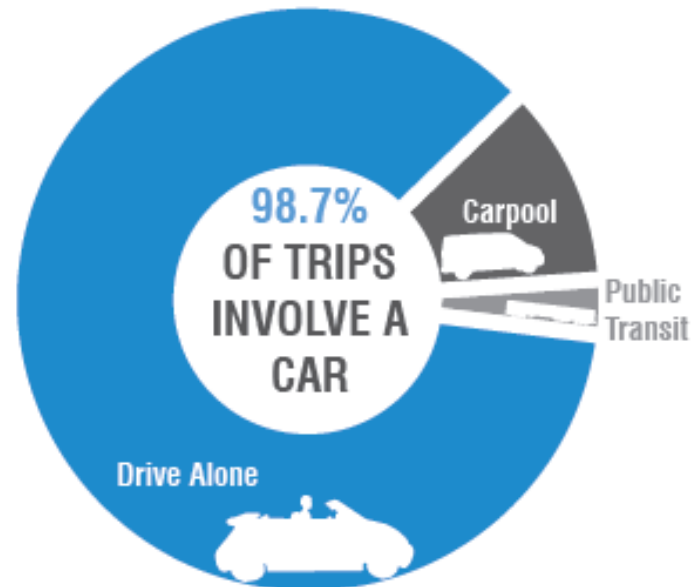
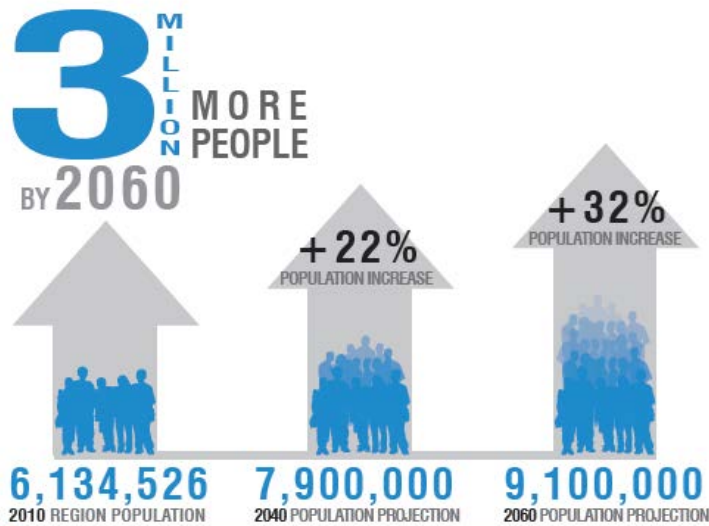
What is the ECG/SE Region?



- **Connects**
 - Key West to Maine
- **220 miles**
 - Indian River to Miami-Dade County
- **6 county collaboration**
 - Miami Dade/Broward/Palm Beach
Martin/St. Lucie/Indian River



What is the SE region today?

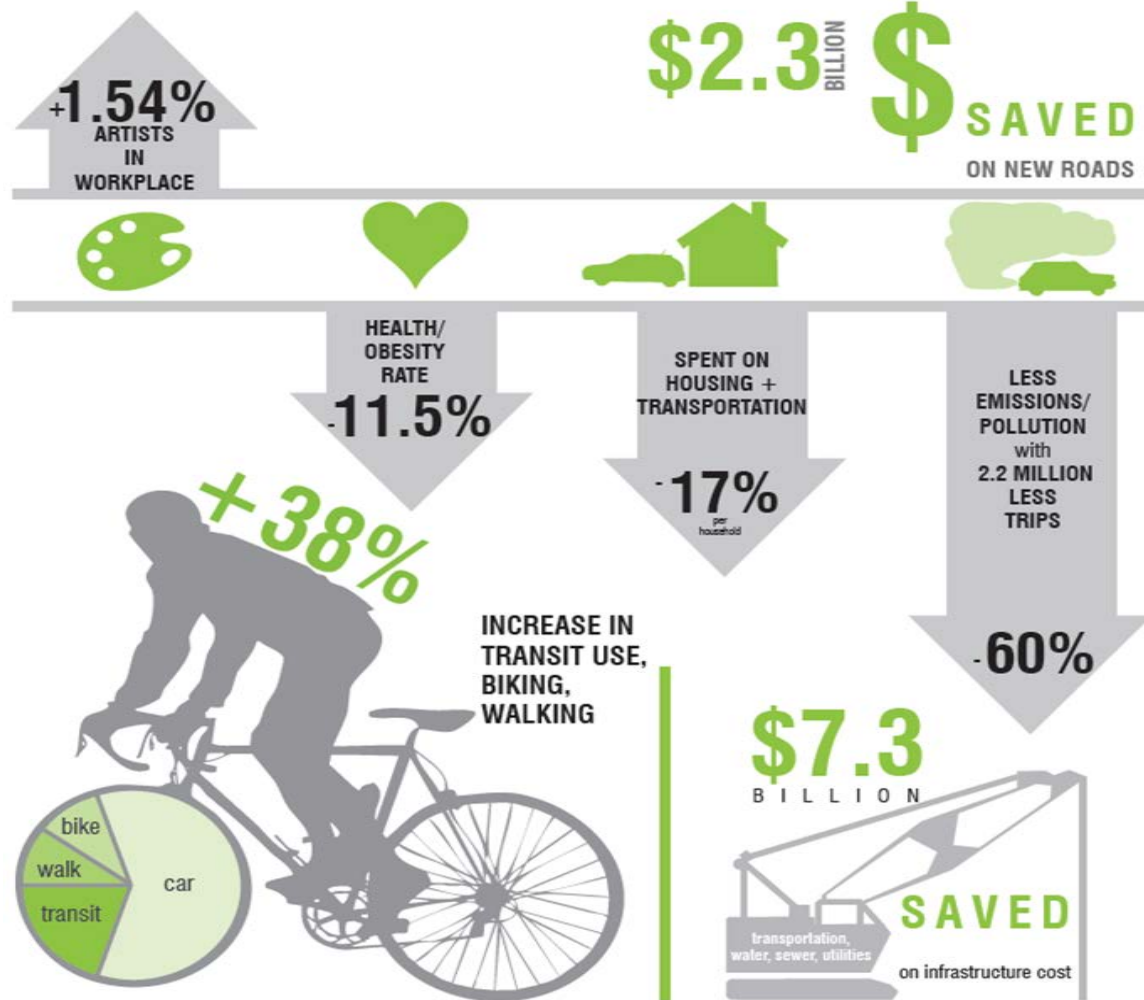


Source: Fair Housing and Equity Assessment (FHEA)

What is the SE region tomorrow ?....



What is the SE region of tomorrow?



How we meet F.G.T.C. Criteria?



- ✓ 1. Broad Community Support
- ✓ 2. Multi-County Regional Alliance
- ✓ 3. Serves Destinations
- ✓ 4. Economic Development/Tourism
- ✓ 5. Safe Off-Hwy Trail
- ✓ 6. Public/Private Investment
- ✓ 7. Operations & Maintenance
- ✓ 8. Multimodal Transportation
- ✓ 9. Readiness
- ✓ 10. Programmed Within 5 Years

1. Broad Community Support



East Coast Greenway® ALLIANCE



Miami River Commission

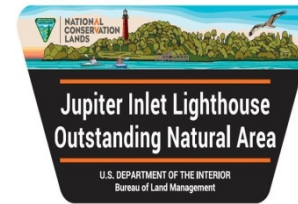
GREEN MOBILITY NETWORK



DOVER, KOHL & PARTNERS town planning

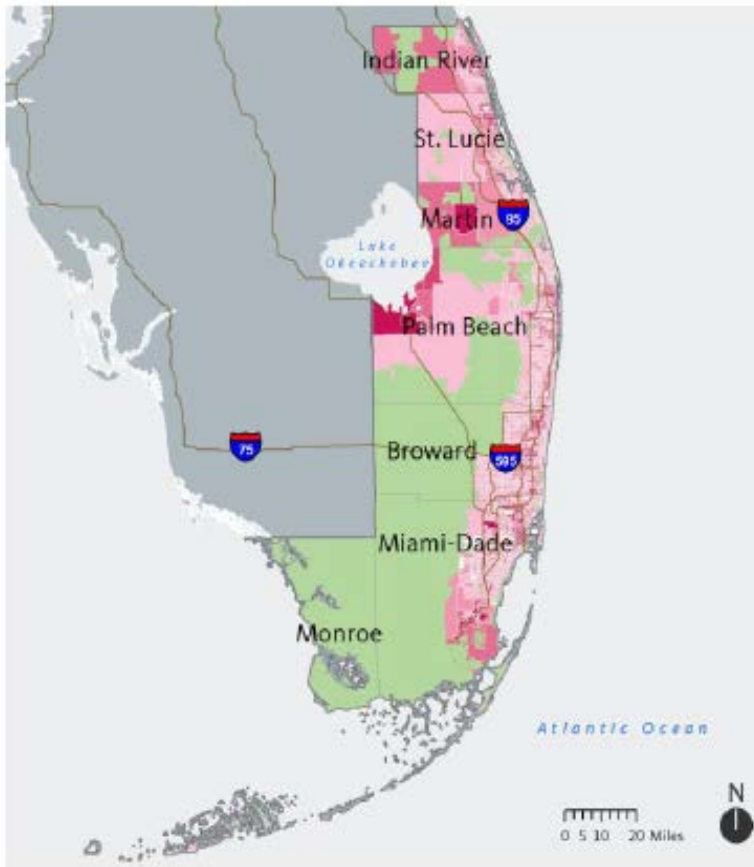


3. Serves Destinations



Manatee Observation & Education Center
Fort Pierce, Florida

4. Economic Development & Tourism



Southeast Florida

NATIONAL LEADER

in Trade & Tourism

1st INTERNATIONAL AIR CARGO TONNAGE & HOME PORT CRUISE PASSENGERS

3rd international visitors

5th air passengers

6th waterborne containers

8th value of exports



5. Shared-Use Trails



6. Public/Private Investment



| EAST COAST GREENWAY - SOUTHEAST FLORIDA REGION | | | |
|--|------------------------|----------------------------|-------------------------|
| COUNTY | FUNDS EXPENDED TO-DATE | FUNDS CURRENTLY PROGRAMMED | PRIORITY GAP ESTIMATES* |
| Indian River | \$7,500,000 | \$0 | \$0 |
| St. Lucie | \$9,135,000 | \$1,733,500 | \$10,993,343 |
| Martin | \$1,385,000 | \$4,325,000 | \$16,524,816 |
| Palm Beach | \$26,575,000 | \$11,005,000 | \$25,257,775 |
| Broward | \$35,000,000 | \$21,130,213 | \$22,407,236 |
| Miami-Dade | \$97,154,907 | \$64,329,000 | \$32,841,315 |
| TOTAL, SE REGION | \$176,749,907 | \$102,522,713 | \$108,024,485 |

| | |
|--|----------------------|
| TOTAL FUNDS EXPENDED & PROGRAMMED TO-DATE | \$279,272,620 |
|--|----------------------|

* Only includes priority gaps ready for construction by 2021

7. Operations and Maintenance



NATURAL/RURAL TRAILS



URBAN/DEVELOPED TRAILS

- **40-years**

- History of Local O&M in Corridor
- 91 miles of built ECG segments in place

- **16-letters**

- Local Government Letters of Commitment for O&M
- 5 Counties – St. Lucie, Martin, Palm Beach, Broward & Miami-Dade (Indian River is complete)
- 11 Cities already – Fort Pierce, Port St. Lucie, Stuart, Tequesta, North Palm Beach, Lake Worth, West Palm Beach, Boynton Beach, Hallandale, Miami Beach
- Additional commitments forthcoming

8. Multimodal Transportation



**BIKE TO TRANSIT.
SIMPLE.**

REGISTER,
BRING A BIKE &
RIDE TRI-RAIL
FREE, NOV 11-15

WHEELS
SOUTH MIAMI-SOUTH FLORIDA
NOVEMBER 11-15
2015
BIKE | WALK | TRANSIT | TRAVEL

East Coast
Greenway
Alliance

The
Miami
Foundation

WHEELSFLORIDA.ORG

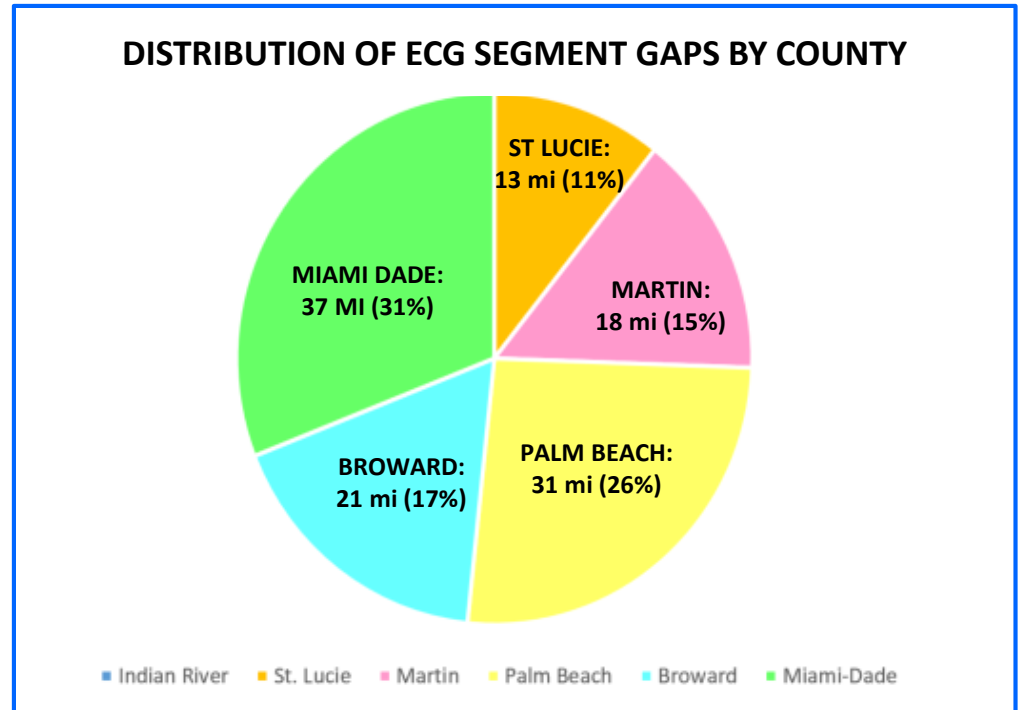
TRAIL & RAIL



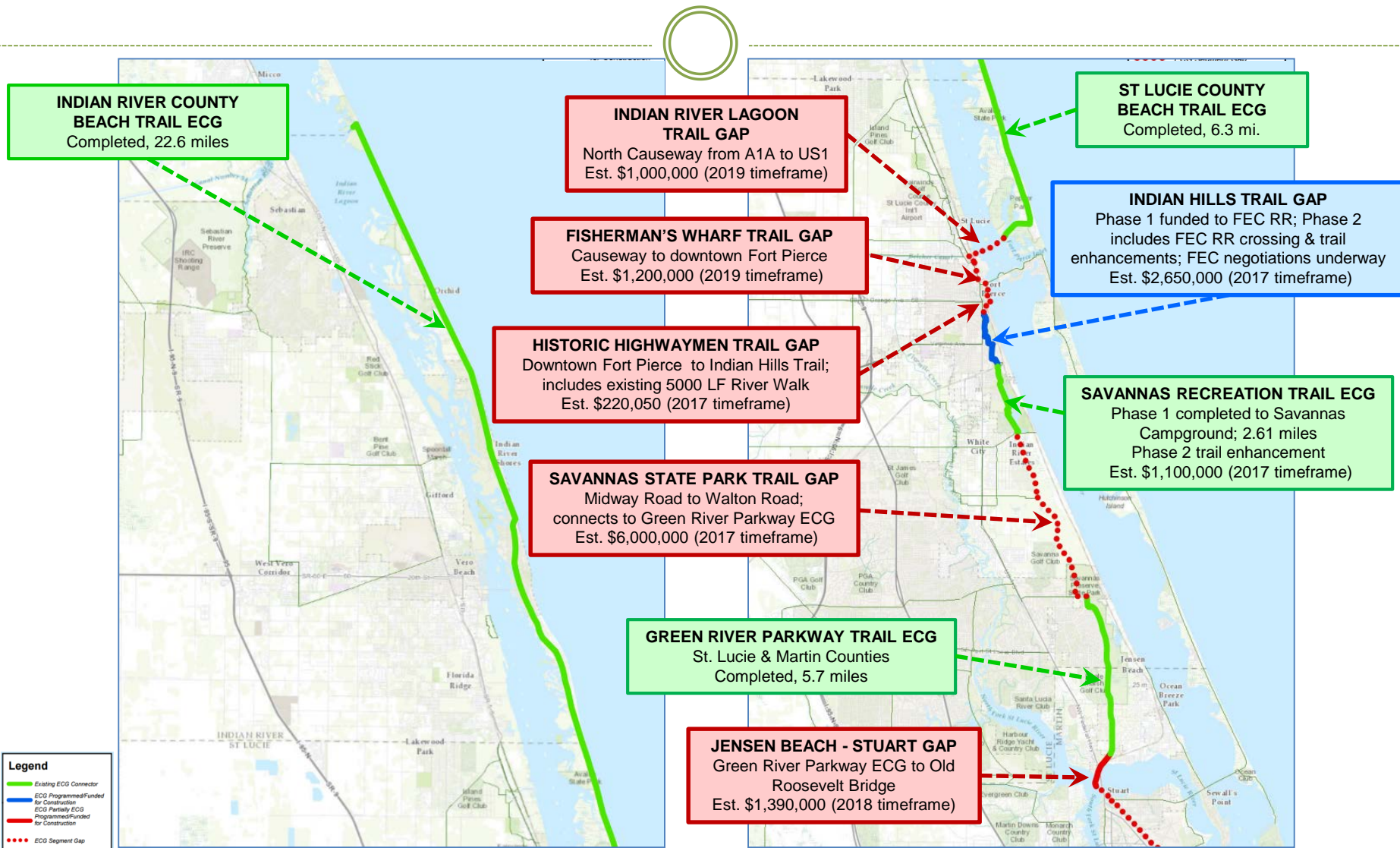
9-10. Readiness & 5-Year Program



| OVERALL PROJECT READINESS | |
|--|---|
| EXISTING ECG SEGMENTS (final form) | 91 miles (41% of corridor) |
| FUNDED ECG SEGMENTS (fully funded but unbuilt) | 11 miles (5% of corridor) |
| ECG SEGMENT GAPS (need full or partial funding) | 118 miles (54% of corridor) |
| INDIAN RIVER TO MIAMI-DADE | 220 miles (total ECG corridor) |



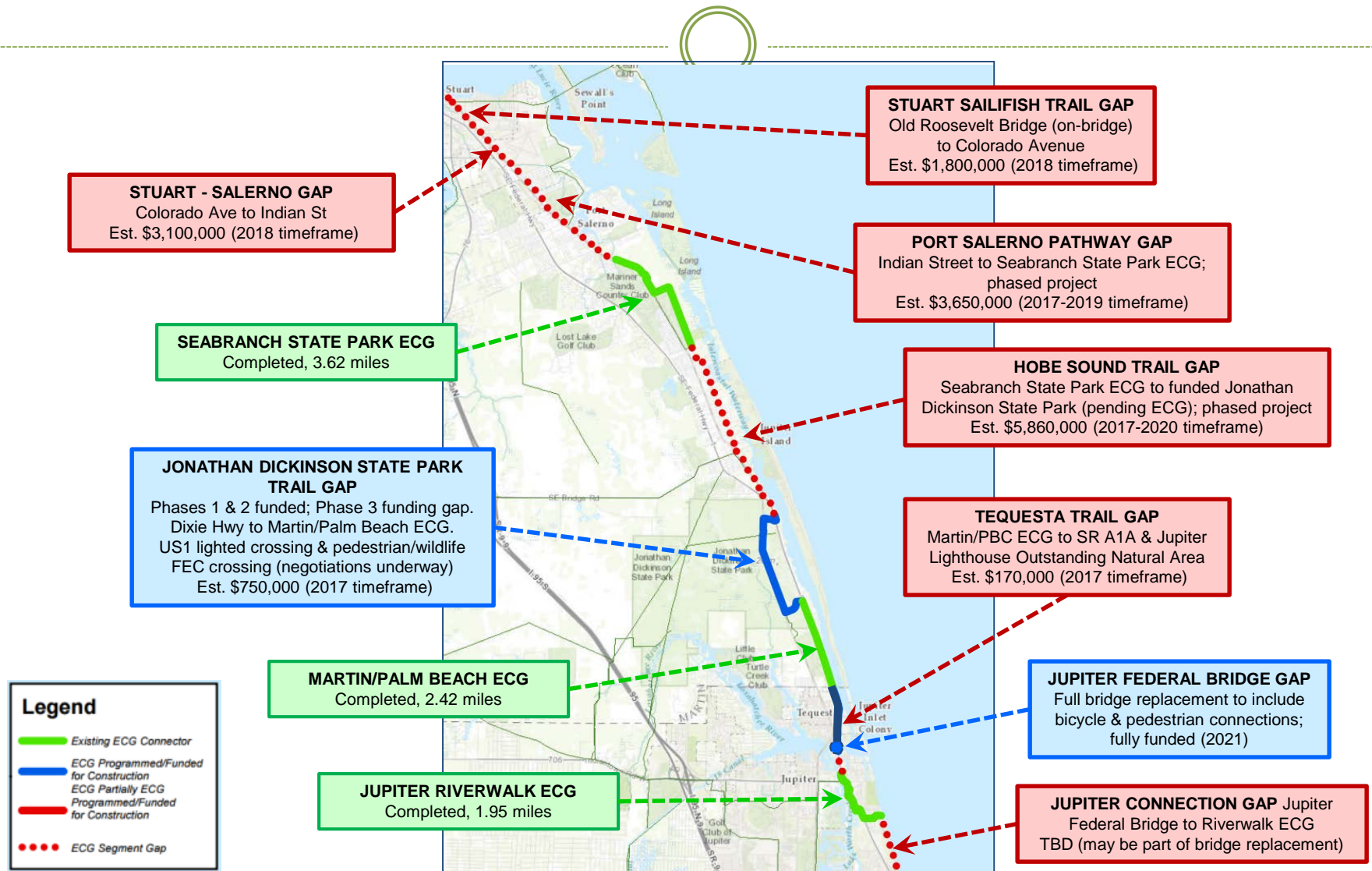
9-10. Readiness & 5 Yr. Program



Legend

- Existing ECG Connector
- ECG Programmed/Funded for Construction
- ECG Partially ECG
- Programmed/Funded for Construction
- ECG Segment Gap

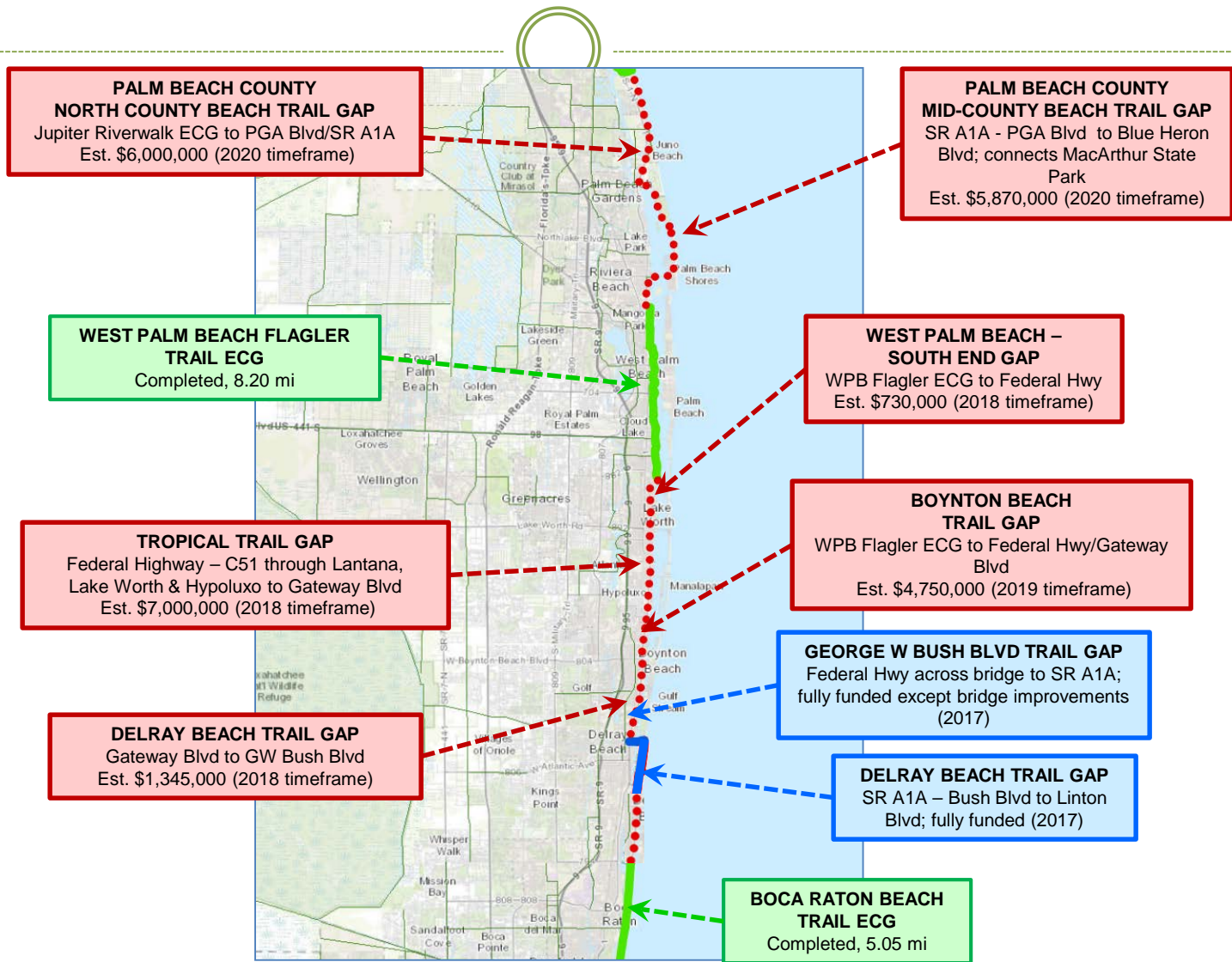
9-10. Readiness & 5 Yr. Program



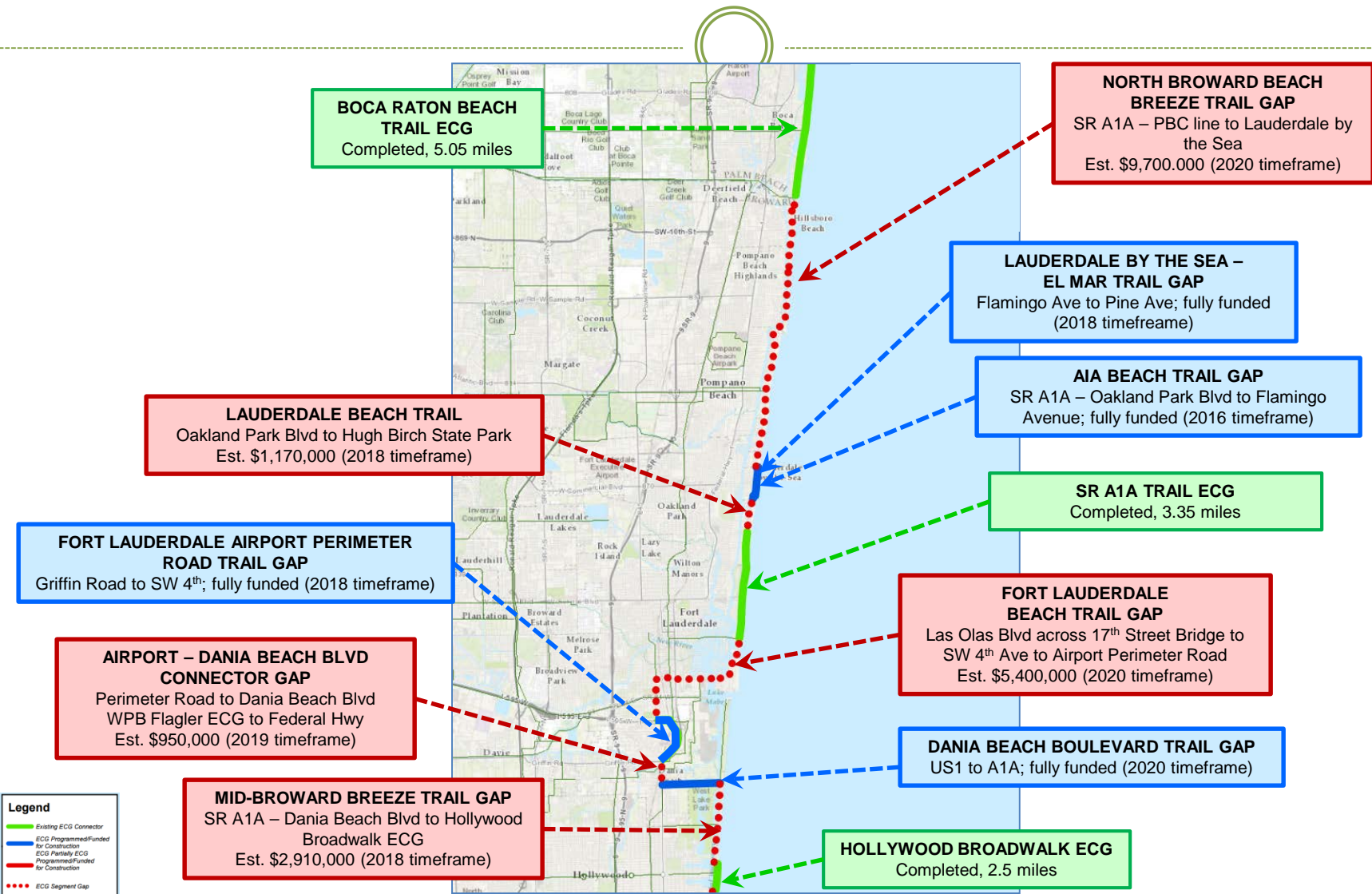
Legend

- Existing ECG Connector
- ECG Programmed/Funded for Construction
- ECG Partially ECG
- Programmed/Funded for Construction
- ECG Segment Gap

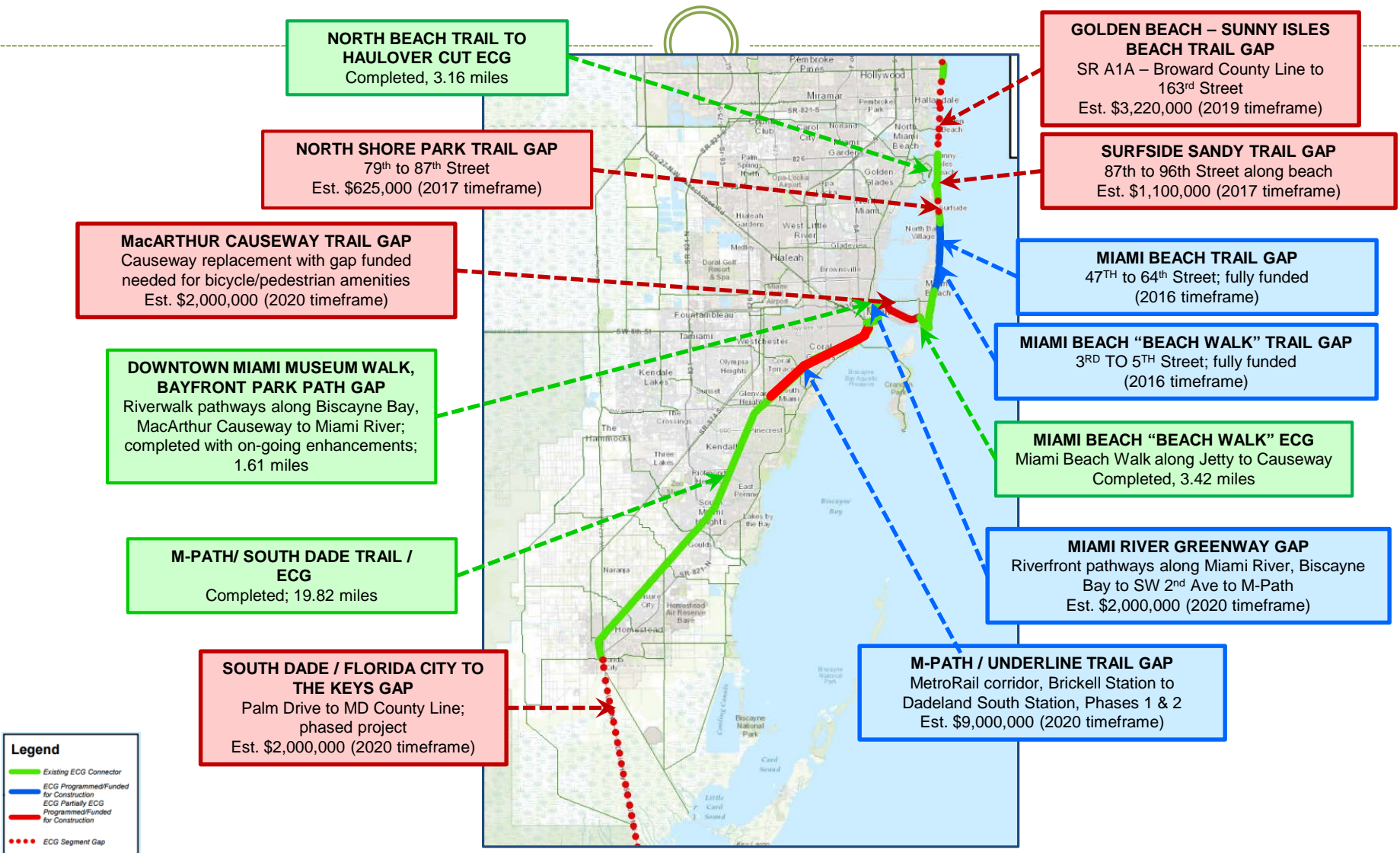
9-10. Readiness & 5 Yr. Program



9-10. Readiness & 5 Yr. Program



9-10. Readiness & 5 Yr. Program



Thank You!..



EAST COAST GREENWAY SOUTH EAST REGION

**MIAMI-DADE/BROWARD/MARTIN
PALM BEACH/ST. LUCIE/INDIAN RIVER**