



RESILIENCE ACTION PLAN

presented to

*Resilient Florida
Program Quarterly
Resilience Forum*

presented by

*Jennifer Z. Carver, AICP
FDOT Office of Policy Planning*

February 1, 2023



FLORIDA TRANSPORTATION PLAN

SAFETY AND SECURITY FOR RESIDENTS, VISITORS, AND BUSINESSES

TRANSPORTATION SOLUTIONS THAT ENHANCE FLORIDA'S ENVIRONMENT



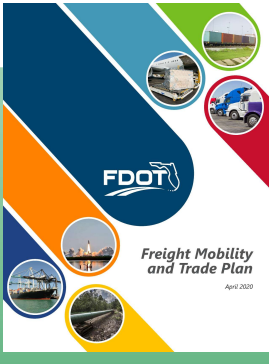
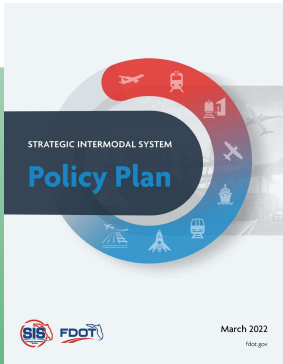
AGILE, RESILIENT, AND QUALITY TRANSPORTATION INFRASTRUCTURE

TRANSPORTATION SYSTEMS THAT ENHANCE FLORIDA'S COMMUNITIES

CONNECTED, EFFICIENT, AND RELIABLE MOBILITY FOR PEOPLE AND FREIGHT

TRANSPORTATION SOLUTIONS THAT STRENGTHEN FLORIDA'S ECONOMY

TRANSPORTATION CHOICES THAT IMPROVE ACCESSIBILITY AND EQUITY



RESILIENCE POLICY

- Ability to **adapt** to changing conditions and **prepare** for, **withstand**, and **recover** from disruption
- Identify risks, particularly related to:
 - Storms
 - Flooding
 - Sea level rise
- Assess potential impacts
- Employ strategies to avoid, mitigate, or eliminate impacts



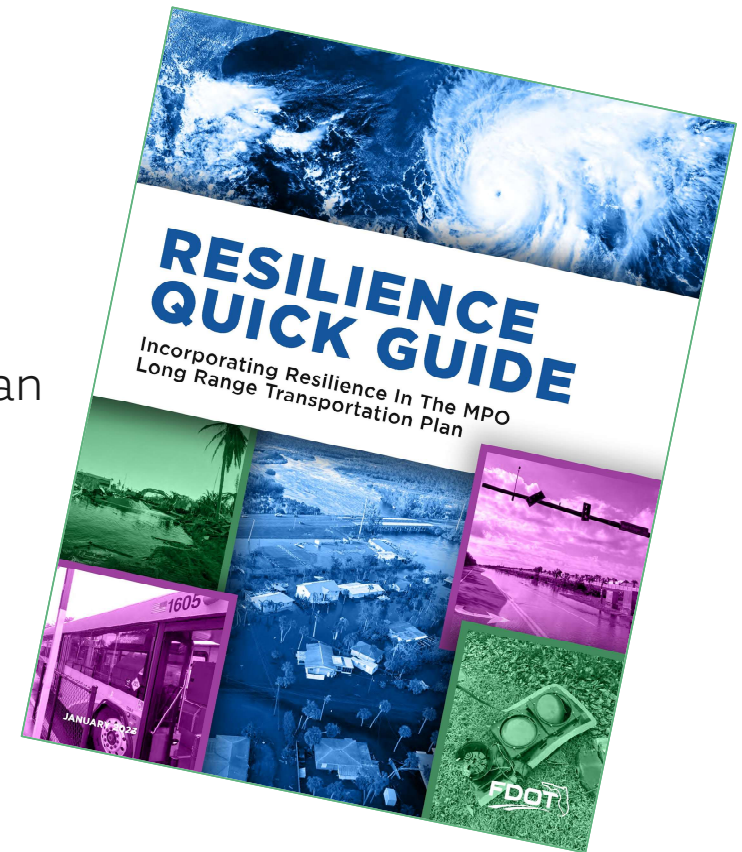
L RTP RESILIENCE QUICK GUIDE

➤ New

- Infrastructure Investment and Jobs Act (IIJA)
- PROTECT funding program
- Resilience Improvement Plan/Resilience Action Plan
- FDOT Resilience Policy

➤ Updated

- Florida Noteworthy Practices
- National examples



INHERENT RESILIENCE

- Design criteria
- Stormwater/drainage design procedures
- Nature-based solutions
- Context sensitive, complete streets
- Local partner coordination

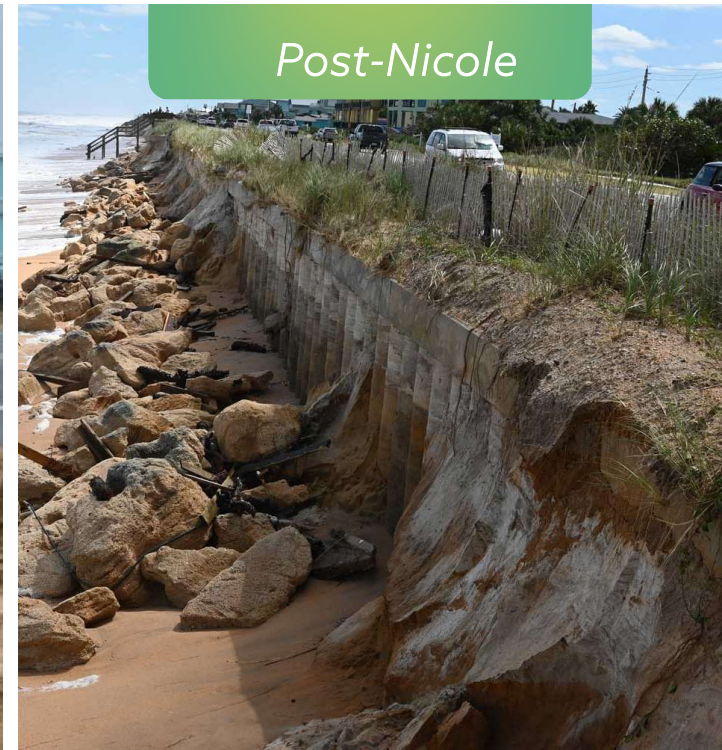




Pre-Ian



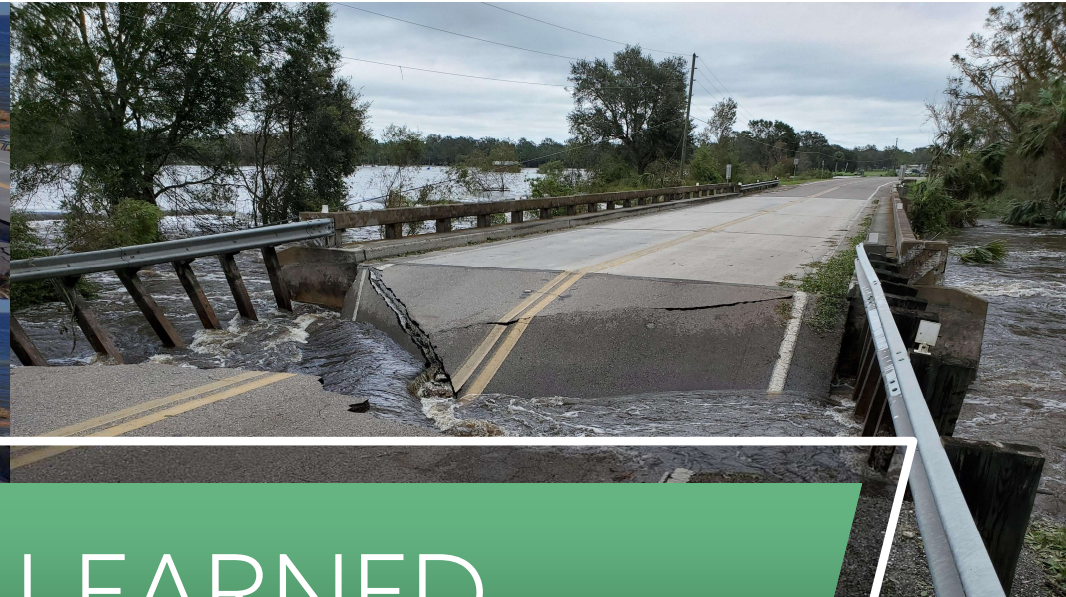
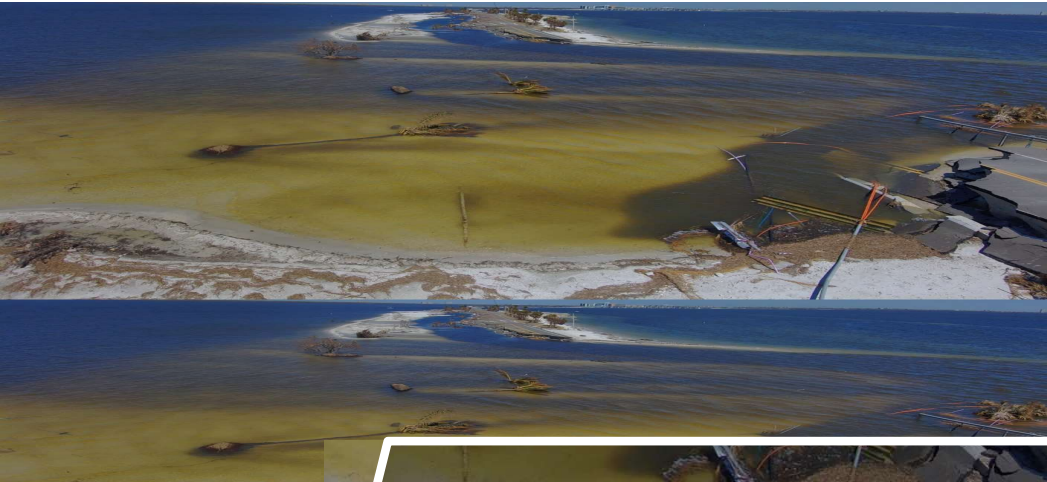
Post-Ian



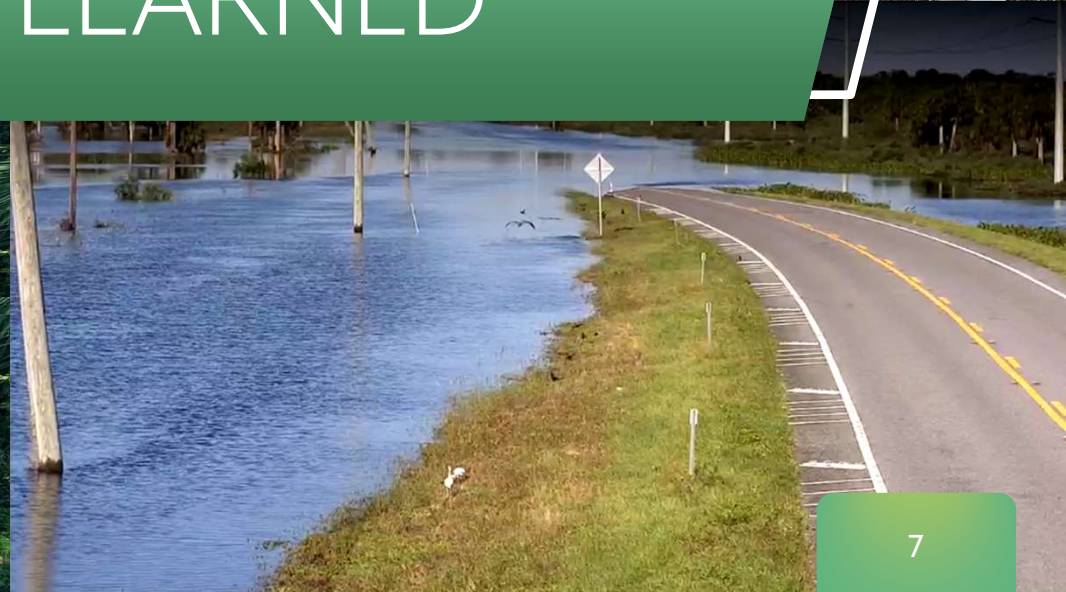
Post-Nicole

SR A1A HURRICANES IAN & NICOLE

- Nature-based hybrid solution
- Dune washed away, but buried secant-pile bulkhead/seawall
- Protect transportation facility from storm-related wave action and erosion



LESSONS LEARNED

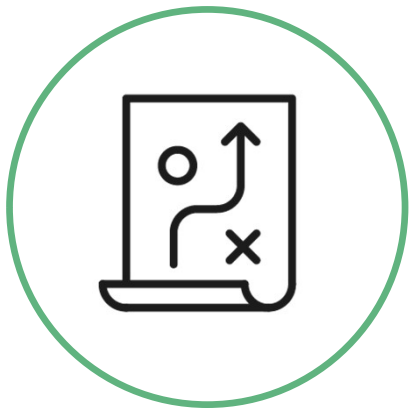


RESILIENCE FOCUS IN FLORIDA

- Sea Level Impact Projection (SLIP) Studies
- Resilient Florida
- Florida Flood Hub
- Statewide Office of Resilience/Chief Resilience Officer
- FDOT Resilience Action Plan (RAP)



RESILIENCE ACTION PLAN GOALS



Recommend **strategies** to enhance infrastructure and operational resilience



Recommend **design changes** for existing and new facilities



Enhance **partnerships** to address multijurisdictional resilience needs

RESILIENCE ACTION PLAN ELEMENTS



Historic/
current issues



Alternatives to retrofit existing
infrastructures and systems



FDOT policies
& procedures

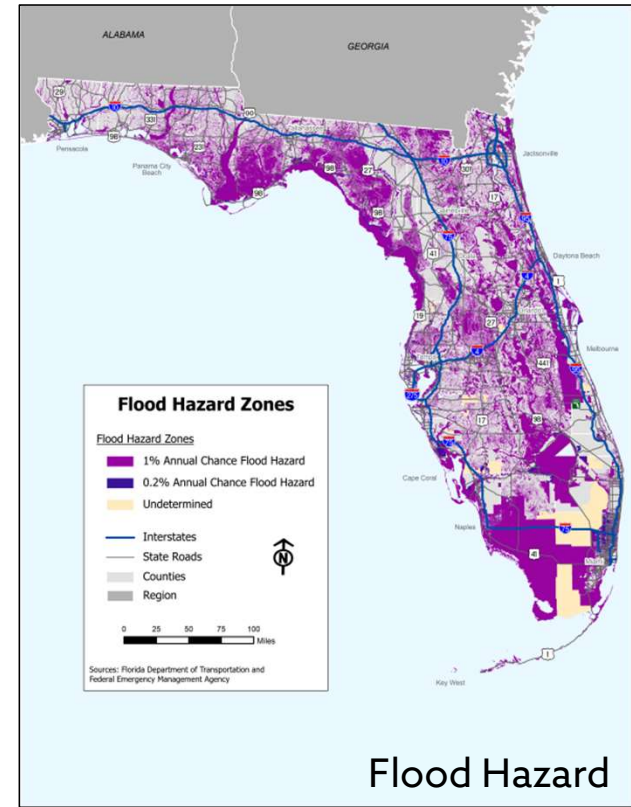


Database of vulnerable
assets



Vulnerability assessment
of State Highway System

VULNERABILITY ASSESSMENT



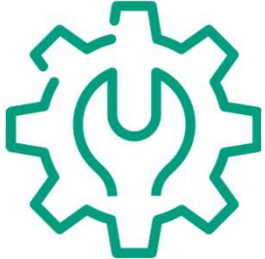
VULNERABILITY ASSESSMENT: PRIORITIZATION

Vulnerability	Hazards affecting an area		
	1% annual chance of flooding (100-year flood zone)	2 feet of sea level rise	Category 3 storm surge
High	Areas affected by all three hazards		
Medium	Areas affected by any two of the three hazards		
Low	Areas affected by any one of the three hazards		
Other	Remaining areas not within the hazard areas above		

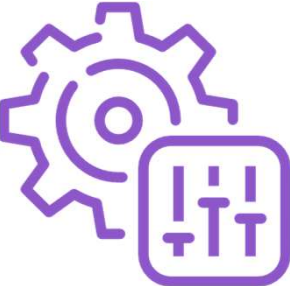
RESILIENCE ACTION PLAN STRATEGY AREAS



Planning/PD&E



Design & Construction



Operations



Asset Management

RESILIENCE ACTION PLAN NEXT STEPS



Finalize Vulnerability
Assessment &
Prioritization



Continue
Outreach



Finalize Strategies,
Technical Assistance,
& Database

Plan due to Governor and Legislature by June 30, 2023

FEDERAL PROTECT PROGRAM

- Promoting Resilience Operations for Transformative, Efficient, and Cost-Saving Transportation (PROTECT)
- Formula and discretionary funding
- Formula funding allocated to FDOT districts
- Emphasis on incremental improvements and natural hazards



Don't Drive Into the Unknown.....



.....Stay Away from Flooded Streets!

For more information, please contact:

Jennifer Z. Carver, AICP



Jennifer.Carver@dot.state.fl.us



850-414-4820