

Ranch Reserve

Less-Than-Fee

Brevard, Indian River and Osceola Counties

<i>Year Added to Priority List</i>	<i>1997</i>
<i>Project Acres</i>	<i>36,410</i>
<i>Acquired Acres</i>	<i>23,896</i>
<i>Cost of Acquired Acres</i>	<i>\$10,773,500</i>
<i>Remaining Project Acres</i>	<i>12,514</i>
<i>2023 Assessed Value of Remaining Acres</i>	<i>\$51,400,951</i>

Purpose for State Acquisition

The Ranch Reserve project includes a vast area of open lands—pastures, pine flatwoods, palmetto prairies and marshes—west of the St. Johns River. These flatlands are important for wildlife such as sandhill cranes, caracara, red-cockaded woodpeckers and an experimental group of extremely rare whooping cranes. The Ranch Reserve project will ensure that a large part of these lands remain as they are today, thus preserving a connection with public lands to the north and east.

General Description

The Ranch Reserve's four cattle ranches lie on the Osceola Plain, west of and above the St. Johns River marshes. Mesic flatwoods interrupted by depression marshes cover approximately 40 percent of the project area. Swamps and hammocks make up much of the remaining natural communities. Improved pastures cover approximately 30 percent of the area.

Multiple rare or imperiled species are known or reported to occur within the project, including the red-cockaded woodpecker and one of the largest populations of sandhill cranes in Florida. Additionally, the Florida Fish and Wildlife Conservation Commission has released whooping cranes on the St. Johns River Water Management District's Escape Ranch to re-establish the species in Florida. The wildlife habitat within the project is threatened by the harvest of old-growth pines and conversion to more intensive agriculture or non-agricultural use. The project also includes the headwaters of several streams that flow into the St. Johns River marsh.



FNAI Element Occurrence Summary

<u>FNAI Elements</u>	<u>Score</u>
Red-cockaded woodpecker	G3/S2
Whooping crane	G1/S1
Florida sandhill crane	G5T2/S2
Eastern indigo snake	G3/S2?
Gopher tortoise	G3/S3
Crested caracara	G5/S2
Arogos skipper	G2G3T1T2/S2
Florida burrowing owl	G4T3/S3
Bachman's sparrow	G3/S3
Bald eagle	G5/S3
Southeastern fox squirrel	G5T5/S3S4

Public Use

The project qualifies as a wildlife management area. The amount and type of public use will be negotiated with the landowners.

Acquisition Planning

1996

On October 30, 1996, the Land Acquisition and Management Advisory Council adopted criteria for establishing a Less-Than-Fee acquisition category: resource value of the project/tract can be adequately protected through a less-than-fee instrument; the seller is willing to accept a less-than-fee-simple instrument and the Land Acquisition and Management Advisory Council has determined that the acquisition objectives can be met by acquiring a less-than-fee interest; and the manager is willing to oversee a less-than-fee-simple instrument.

On December 5, 1996, the Land Acquisition and Management Advisory Council transferred the remaining ownerships within the Ranch Reserve project boundary—Campbell (acquired), Mills (acquired), Kelly/Bronson and Kaup—to the Less-Than-Fee category.

On December 24, 1996, the St. Johns River Water Management District acquired a conservation easement over the large central tract (Escape Ranch - 11,768 acres).

2000

In 2000, the BOT acquired a conservation easement over Mills Ranch.

2003

On July 31, 2003, the St. Johns River Water Management District acquired the Wolf Creek Ranch conservation easement (3,810 acres).

2011

On December 9, 2011, the Acquisition and Restoration Council placed the project in the Less-than-Fee category.





Coordination

The St. Johns River Water Management District is an acquisition partner with the state and has acquired substantial acreage within the project area. The Nature Conservancy is also an acquisition partner.

Management Policy Statement

As a less-than-fee acquisition, Ranch Reserve would be managed by the landowner as outlined in the conservation easement.

Manager(s)

If acquired as less-than-fee, management responsibility of the Ranch Reserve would remain with the landowner. Periodic monitoring of the site's management to confirm continued compliance with the conditions of the conservation easement would be coordinated by the Division of State Lands.

Management Prospectus

The Division of State Lands will periodically monitor the conservation easement, while management will be conducted by the property owner.

Qualifications for State Designation

The size of the Ranch Reserve project and its importance to wildlife, particularly to birds such as sandhill cranes and red-cockaded woodpeckers, qualify it as a wildlife management area.

Conditions Affecting Intensity of Management

The project generally includes lands requiring monitoring only and minimum-intensity management.

Management Implementation, Public Access, Site Security and Protection of Infrastructure

Within the first year after acquisition, the St. Johns River Water Management District will take aerial photographs to record the condition of each ranch and will begin to inventory natural resources on site. Landowners will develop management and monitoring plans to address site security, monitor and control public access, and implement fire management. Long-range plans will stress ecosystem management and the protection and management of rare species. Forest communities will be managed using techniques recommended by the Florida Forest Service. Appropriate protection will be provided to environmentally sensitive areas. Minimal infrastructure development will be required.

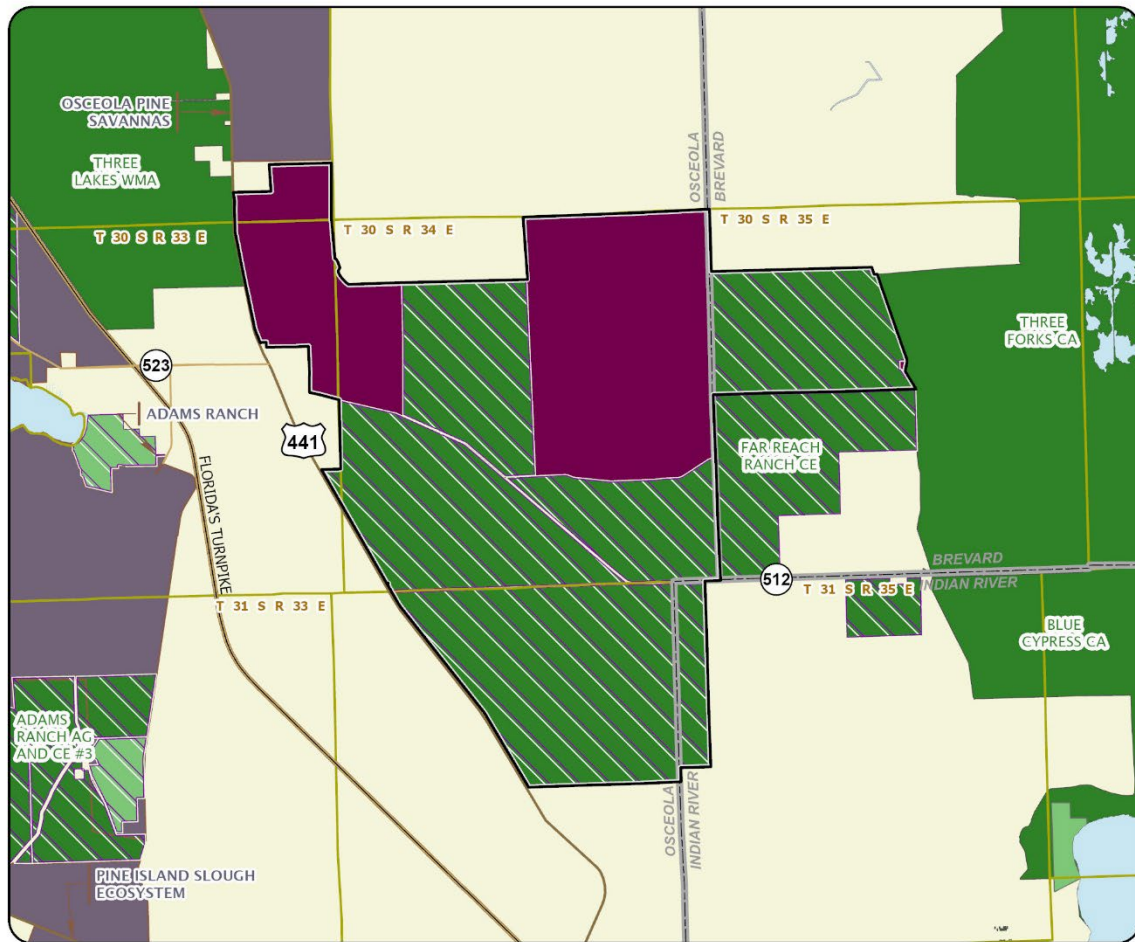
Revenue-generating Potential

The underlying fee ownership will remain with the present landowners, so no public revenue is anticipated from the area.

Cooperators in Management Activities

The St. Johns River Water Management District will cooperate with other state and local government agencies in monitoring land in the project.





RANCH RESERVE

BREVARD, INDIAN RIVER, AND OSCEOLA COUNTIES

