

San Felasco Conservation Corridor

Less-Than-Fee

Alachua County

<i>Year Added to Priority List</i>	<i>2003</i>
<i>Project Acres</i>	<i>376</i>
<i>Acquired Acres</i>	<i>0</i>
<i>Remaining Project Acres</i>	<i>376</i>
<i>2024 Assessed Value of Remaining Acres</i>	<i>\$1,621,933</i>

Purpose for State Acquisition

The San Felasco Conservation Corridor project will facilitate the development of a greenway conservation corridor in northeast Alachua County and will help to protect significant natural and cultural resources in the region.

General Description

The San Felasco Conservation Corridor project is located in Alachua County and consists of three separate tracts of land. The tracts proposed for this project include a narrow fringe of hardwood forest bordering (but not including) a shallow lake, a small parcel of hardwood forest along a blackwater stream bordered by development (including a four-lane highway), and a pine plantation with a few isolated wetlands and a blackwater stream.

The western tract (Burnett Lake Subdivision property) is approximately 30 acres and consists of a narrow strip of land bordered on the northwest by a railroad and partially surrounding the north and west sides of Burnett Lake. About two-thirds of the tract supports a predominantly second-growth hardwood forest.

The central tract is approximately 15 acres and lies between U.S. 41 to the south and a railroad to the north. The south flowing Cellon Creek flows through this parcel from the state-owned University of Florida Institute of Food and Agricultural Sciences property. The tract supports second-growth hardwood forest and other hardwoods, growing along the small floodplain and slopes of a blackwater stream. Though narrow and disturbed, this tract may have some, though certainly limited, value as a wildlife corridor.

FNAI Element Occurrence Summary

no rare species are associated with the project

Public Use

The San Felasco Conservation Corridor project is proposed for less-than-fee acquisition and does not provide for public access.



Acquisition Planning

2003

On June 6, 2003, the Acquisition and Restoration Council (ARC) added this project to Group A of Florida Forever projects.

2011

On December 9, 2011, ARC placed this project in the Less-Than-Fee category of Florida Forever projects.

Coordination

The San Felasco Land Trust has created a large 25,000-acre corridor project and brought together the Department of Environmental Protection (DEP), Suwannee River Water Management District, Florida Communities Trust and the Alachua Forever land acquisition program to cooperatively acquire the San Felasco Conservation Corridor project. There are no adjacent land acquisition projects begun under Conservation and Recreational Lands, Preservation 2000 or Florida Forever programs. San Felasco Hammock Preserve State Park and the TTC/Gainesville Wellfield Conservation Easement are adjacent to the larger 25,000-acre corridor project.

Management Policy Statement

As a less-than-fee acquisition, the San Felasco Conservation Corridor project would be managed by the landowner as outlined in the conservation easement.

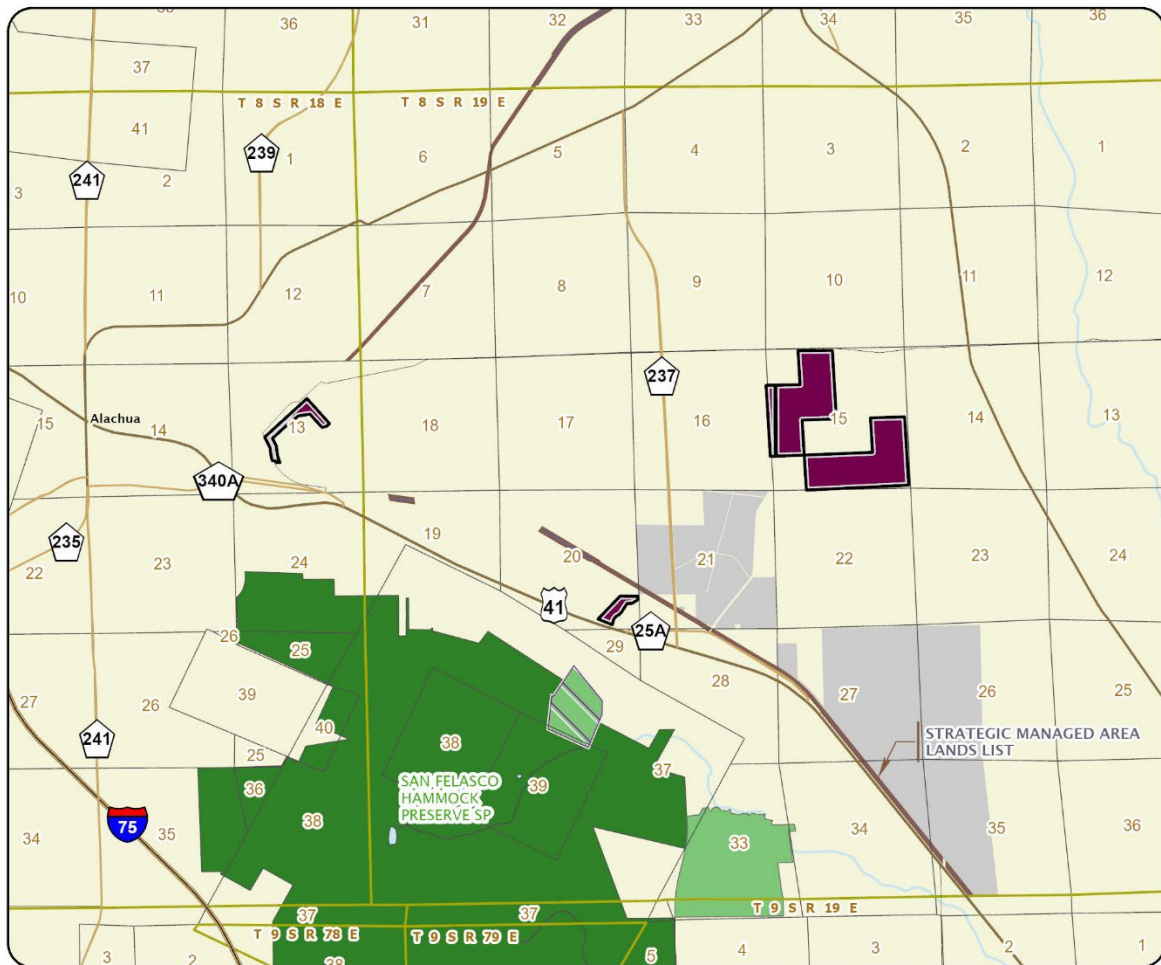
Manager(s)

If acquired as less-than-fee, management responsibility of the San Felasco Conservation Corridor project would remain with the landowner. Periodic monitoring of the site's management to confirm continued conservation easement compliance would be coordinated by DEP's Division of State Lands.

Management Prospectus

DEP's Division of State Lands will periodically monitor the conservation easement, while the management will be conducted by the property owner.





SAN FELASCO CONSERVATION CORRIDOR

ALACHUA COUNTY

