

Lochloosa Wildlife

Substantially Complete

Alachua County

<i>Year Added to Priority List</i>	1994
<i>Project Acres</i>	33,058
<i>Acquired Acres</i>	29,181
<i>Remaining Project Acres</i>	3,877
<i>2025 Assessed Value of Remaining Acres</i>	\$8,964,587

Purpose for State Acquisition

The Lochloosa Wildlife project will conserve the large lakes, flatwoods and prairies in southeast Alachua County, home to many wildlife species including the Florida black bear (*Ursus americanus floridanus*). The project will also enhance the water quality of the critical wetlands that link Newnan’s Lake, Lochloosa Lake, Orange Lake and Paynes Prairie while providing resource-based recreational activities that include boating, fishing, hiking and hunting.

General Description

The project encompasses significant resources associated with Lochloosa Lake (particularly large populations of birds of prey), a bird rookery used by wood stork and possibly the largest intact mesic flatwoods remaining in Alachua County. Tracts in intensive timber production account for more than half the project acreage. Magnesia Springs supports the only known population of the freemouth hydrobe snail (*Aphaostracon chalarogyrus*) in the world. Nineteen other rare or endangered species are known to occur on-site, including the Florida sandhill crane (*Grus canadensis*). The good quality surface waters in the project are a significant hydrological resource, and the project will also buffer several Outstanding Florida Waters in the vicinity.





Florida Natural Areas Inventory (FNAI) Element Occurrence Summary

<u>FNAI Elements</u>	<u>Score</u>
Florida black bear	G5T4/S4
Striped newt	G2/S2
Eastern indigo snake	G2G3/S2?
Gopher tortoise	G3/S3
Wood stork	G4/S2
Osprey	G5/S3S4
<i>Florida toothache grass*</i>	G2/S2
<i>Sand butterfly pea*</i>	G2Q/S2
Florida sandhill crane	G5T2/S2
Blackbanded sunfish	G3/S1S3
<i>Many-flowered grass-pink*</i>	G3/S2S3
Gopher frog	G2G3/S3
<i>*Plant species are in italics</i>	

Public Use

The project would be designated as a wildlife management area.

Acquisition Planning

1995

On December 28, 1995, the St. Johns River Water Management District (SJRWMD) established the Georgia Pacific-Lochloosa (16,650 acres) conservation easement, of which 14,844 acres are within the project boundary.

2009

On December 15, 2009, Alachua County acquired the Roberts parcel (323.49 acres) in Phifer Flatwoods Preserve with the help of The Nature Conservancy.

2011

Essential tracts within this project include Georgia Pacific (SJRWMD has acquired a conservation easement over 10,300 acres surrounding Lake Lochloosa), Franklin Crates, Concora (Container Corp./Wachovia), Goethe and Brown.

On December 9, 2011, this project was placed in the Substantially Complete list of Florida Forever projects.

2023

In October 2023, the Acquisition and Restoration Council (ARC) voted to remove approximately 4,737 acres from the project that were deemed unsuitable for State acquisition.

Coordination

SJRWMD is an acquisition partner.





Management Policy Statement

The primary goals of management of the Lochloosa Wildlife project are to conserve and protect significant habitat for native species or endangered and threatened species; to conserve, protect, manage or restore important ecosystems, landscapes and forests, in order to enhance or protect significant surface water, coastal, recreational, timber, fish or wildlife resources which local or state regulatory programs cannot adequately protect; to provide areas, including recreational trails, for natural-resource-based recreation; and to preserve significant archaeological or historical sites.

Manager(s)

The Florida Fish and Wildlife Conservation Commission will be the manager.

Management Prospectus

Conditions Affecting Intensity of Management

The Lochloosa Wildlife project is an area in imminent danger of development and in high need of intense resource management and protection. The large pine plantations will require restoration.

Management Implementation, Public Access, Site Security and Protection of Infrastructure

Within the first year after acquisition, management will concentrate on site security, natural resource management and conceptual planning. Public-use facilities will be developed in succeeding years.

Revenue-generating Potential

No significant revenue is expected to be generated initially. As public use is increased, modest revenue may be generated.

Cooperators in Management Activities

The Florida Forest Service is recommended as a cooperator to assist with forest management.



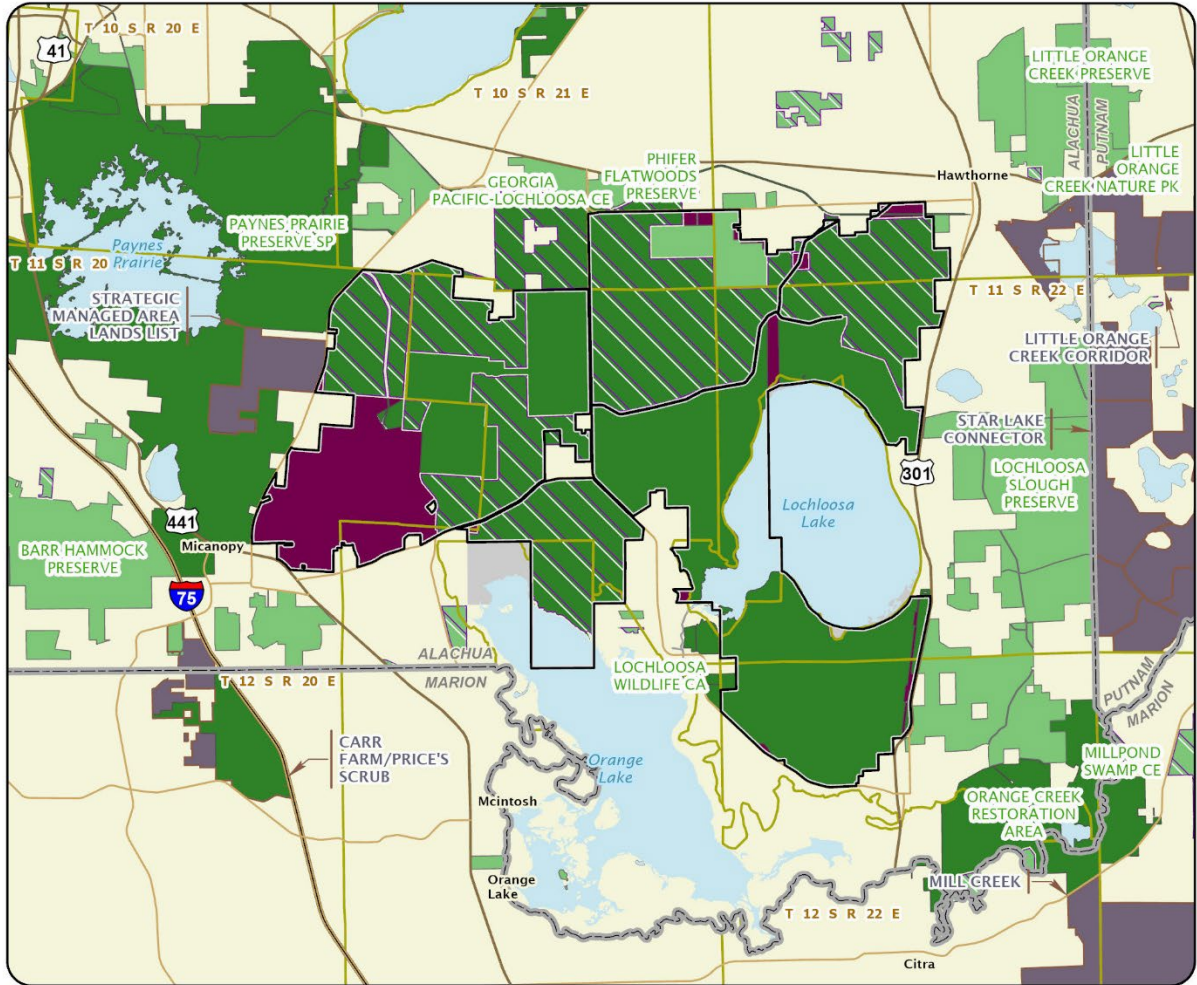


Management Cost Summary

FWC	1996/97	1997/98	1998/99
Source	Conservation and Recreational Lands (CARL) Program	CARL	CARL
Salary	\$0	\$0	\$140,000
OPS	\$0	\$0	\$5,500
Expense	\$50	\$0	\$35,900
OCO	\$0	\$0	\$98,200
FCO	\$0	\$0	\$0
TOTAL	\$50	\$0	\$279,600

Source: Management Prospectus as originally submitted





LOCHLOOSA WILDLIFE

ALACHUA COUNTY

