

Millstone Plantation

Less-Than-Fee

Leon County

<i>Year Added to Priority List</i>	2001
<i>Project Acres</i>	176
<i>Acquired Acres</i>	93
<i>Remaining Project Acres</i>	83
<i>2025 Assessed Value of Remaining Acres</i>	\$3,934,367

Purpose for State Acquisition

The Millstone Plantation project will support the state’s water quality and quantity through the protection of Lake McBride, a critical recharge area for the Floridan aquifer. The lakes of Leon County comprise one of the most important groups of solution lakes in the northern hemisphere. Most of these lakes hold sinkholes that breach the Floridan aquifer; therefore, it is important that they are afforded protection from runoff through the acquisition of this project.

General Description

The property consists of a mosaic of vegetated communities, a deeply incised seepage stream, open pasture and a portion of Lake McBride. The project falls within the Red Hills physiographic region, which consists of pine-dominated uplands, numerous karst sinkholes and lakes. These habitats are breeding, nesting and foraging areas for numerous wildlife species, including bald eagle (*Haliaeetus leucocephalus*). Millstone Plantation is also rich in archaeological sites.

Florida Natural Areas Inventory (FNAI) Element Occurrence Summary

<u>FNAI Elements</u>	<u>Score</u>
Bald eagle	G5/S3
Florida black bear	G5T4/S4

Public Use

As a less-than-fee acquisition, the project would not provide traditional public uses. A limited walking trail exists throughout the project.





Acquisition Planning

2001

On April 6, 2001, the Acquisition and Restoration Council (ARC) approved the Millstone Plantation project consisting of approximately 134 acres and one ownership. The project had an estimated tax-assessed value of \$69,970. Public access would include access for environmental education opportunities. Money from the conservation easement would go to management and outreach programs for the Millstone Institute.

2011

On December 9, 2011, ARC placed this project in the Less-Than-Fee category.

Coordination

The Trust for Public Land will be the intermediary for acquisition of the conservation easement.

Management Policy Statement

As a less-than-fee acquisition, the Millstone Plantation project would be managed by the landowner as outlined in the conservation easement.

Manager(s)

If acquired as less-than-fee, management responsibility of the Millstone Plantation project would remain with the landowner. Periodic monitoring of the site's management to confirm continued conservation easement compliance would be coordinated by the Florida Department of Environmental Protection's Division of State Lands.

Management Prospectus

The Florida Department of Environmental Protection's Division of State Lands will periodically monitor the conservation easement, while the management will be conducted by the property owner.

Qualifications for State Designation

Due to the site's unique archaeological resources, the site may qualify for designation as a State Historical Site. These resources include historical structures (i.e., the Millstone Plantation House) and a continuous pattern of human settlement.

Conditions Affecting Intensity of Management

The greatest challenge affecting the management of the Millstone Plantation project is the tremendous number of archaeological resources on the property. Developing a plan for the ongoing systematic survey, investigation and interpretation of the site's archaeological resources





will be essential. The proximity of highways and residential and commercial development to the site may pose fire and smoke management problems for the restoration of Millstone's natural communities. Due to development pressure in the Lake McBride Basin, accelerating the timeline for aquatic research is important.

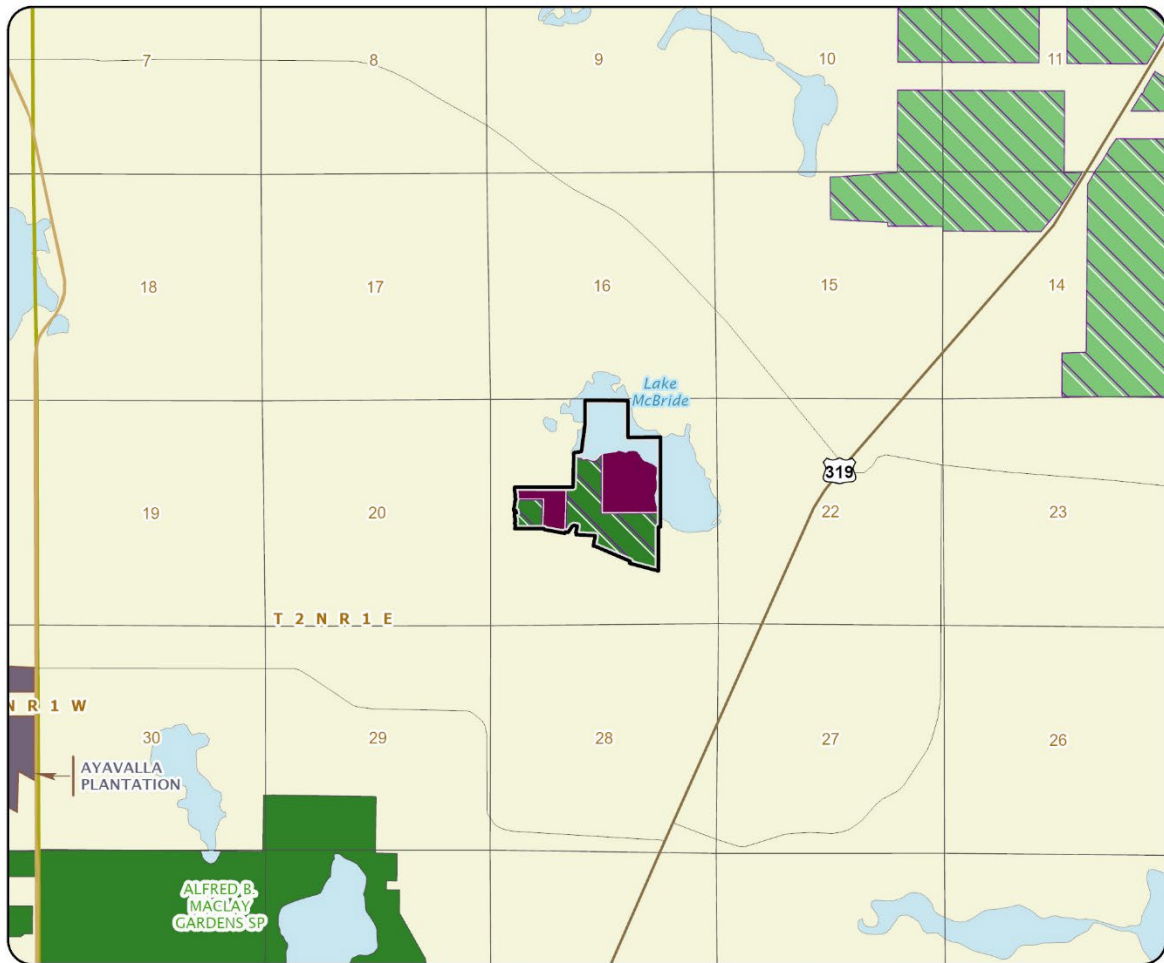
Management Implementation, Public Access, Site Security and Protection of Infrastructure

Archaeological surveys and investigation(s) are ongoing; initial management activities should concentrate on identifying and researching these resources. In subsequent years, the Millstone Institute intends to implement a management plan for the property that will include measures for longleaf pine and native groundcover restoration within the uplands, wildlife management, wetlands management, and enhancement and protection of the many century-old live oaks on the property.

Restoration of natural communities will require the eradication of exotic and pest plants including Chinese tallow (*Triadica sebifera*), Japanese climbing fern (*Lygodium japonicum*) and tropical soda apple (*Solanum viarum*), as well as the implementation of prescribed burning and re-vegetation. The Millstone Institute has and will continue to sponsor scientific aquatic research related to Lake McBride. Existing nature trails on the property will be improved and expanded to enhance public access.

The Millstone Institute will also continue and expand its existing public education programs, including traditional, sustainable, organic agricultural practices and North Florida farm arts (i.e., spinning and weaving). Plans will also be made for historically accurate and appropriate preservation and restoration of the Millstone Plantation House and related structures.





MILLSTONE PLANTATION

LEON COUNTY

-  Florida Forever Project Boundary
-  Essential Parcels Remaining
-  Other Florida Forever Projects
-  State Conservation Lands
-  Other Conservation Lands
-  Less-Than-Fee Acquisition

