

# Pierce Mound Complex

Critical Historical Resources

Franklin County

<i>Year Added to Priority List</i>	1994
<i>Project Acres</i>	562
<i>Acquired Acres</i>	205
<i>Remaining Project Acres</i>	357
<i>2025 Assessed Value of Remaining Acres</i>	\$3,902,021

## Purpose for State Acquisition

The Pierce Mound Complex project will preserve a group of prehistoric mounds north of the City of Apalachicola. The extensive shell midden contains subsistence data and artifacts and reflects changing environmental conditions over a thousand-year period. The Pierce Mound Complex is one of the most important archaeological sites on Florida's Gulf Coast. The project will protect this site and the pinelands, hammocks and marshes around it, giving archaeologists opportunities to examine it and the public opportunities to learn about the prehistory of this region and to enjoy the scenic natural landscape.

## General Description

The Pierce Mound Complex site served as both a secular and ritual center during its centuries of use. It has the potential to yield considerable data to researchers using present-day methodology. Another aspect of the site is the potential for the preservation of normally perishable organic artifacts of wood and fibers in the saturated anaerobic wetland soils adjacent to the uplands portion of the site. Salt marsh covers nearly three-fourths of the project. Hydric hammock and dense (fire-suppressed) mesic flatwoods and scrub cover most of the southern quarter. The upland is threatened by residential development.

## Florida Natural Areas Inventory (FNAI) Element Occurrence Summary

<b><u>FNAI Elements</u></b>	<b><u>Score</u></b>
Fat threeridge (mussel)	G1/S1
Alligator snapping turtle	G3/S3
Spiny softshell	G5/S3
Eastern river cooter	G5T5/S3

---



## Public Use

The project will be designated as an archaeological site. It will give the public an opportunity to learn about the archaeological remains, hike and picnic.

## Acquisition Planning

### **1994**

On December 7, 1994, the Land Acquisition Advisory Council added the Pierce Mound Complex project to the 1995 Conservation and Recreational Lands Priority List. This fee simple acquisition, sponsored by the Department of State's Division of Historical Resources (DHR), consisted of approximately 559 acres, nine owners (David Miller (Mahr), John G. Hodges, Sharon Delores Connell Shuler, Joe Lindsey, Franklin County, Alvin Pines, Christene Rhodes, ANRR Company and the City of Apalachicola) and a 1993 taxable value of \$877,311. The essential parcel to acquire is the Mahr tract.

### **2000**

On June 27, 2000, the Acquisition and Restoration Council (ARC) approved a fee simple 10-acre addition to the project boundary. It was sponsored by the City of Apalachicola, consisted of four owners (Roger Ingram, Apalachicola Oyster Works Inc., Douglas Gaidry and the City of Apalachicola) and had a 1999 taxable value of \$787,585. The addition included the Orman House, Chapman Botanical Garden (owned by the City of Apalachicola) and two other parcels. The historic Orman house (1 acre) has been acquired.

### **2001**

On February 2, 2001, the Florida Department of Environmental Protection (DEP) acquired the first part of Orman House Historic State Park (10.27 acres), of which 5.83 acres are within the project boundary.

### **2006**

On June 9, 2006, ARC moved this project to Group A of the 2006 Florida Forever Priority List.

### **2010**

On December 10, 2010, ARC voted to move this project from the Critical Natural Lands category to a new category, Critical Historical Resources.

### **2025**

In August 2025, ARC removed approximately 21 acres from the project boundary that were deemed unsuitable for State acquisition.





### Coordination

The portion of the project within the City of Apalachicola is in the Apalachicola Bay Area of Critical State Concern.

### Management Policy Statement

Management should provide for uses and recreational activities that are compatible with the protection of any rare and sensitive resources, particularly the mounds. The major activity will be the interpretation of the cultural resources on the site in such a way that they are not degraded. The old railroad grade is suitable for a hiking trail.

### Manager(s)

DEP's Office of Resilience and Coastal Protection (ORCP) is recommended as the lead manager. ORCP's Apalachicola National Estuarine Research Reserve staff will serve as on-site managers. DHR is recommended as the cooperating manager.

### Management Prospectus

#### **Qualifications for State Designation**

The Pierce Mound Complex has the archaeological resources to qualify as a state archaeological site.

#### **Management Implementation, Public Access, Site Security and Protection of Infrastructure**

Within the first year after acquisition, initial or intermediate activities will concentrate on site security, resource inventory and removal of existing trash. ORCP will provide appropriate access to the public while protecting environmental and archaeological resources on-site.

Management of the site will be incorporated into the existing management plan of the Apalachicola National Estuarine Research Reserve. Long-range plans for this property involve use for research and educational activities. A future trail will link the property with the environmental education complex of the reserve. The habitat diversity (estuarine tidal marsh, mesic flatwoods, hydric hammock, scrub, maritime hammock and scrubby flatwoods) combined with one of the most important archaeological sites on Florida's Gulf Coast to produce an exceptional opportunity for public education.

#### **Revenue-generating Potential**

There are no plans for revenue generation from this site.

#### **Cooperators in Management Activities**

DHR will cooperate in managing the archaeological resources of the site.



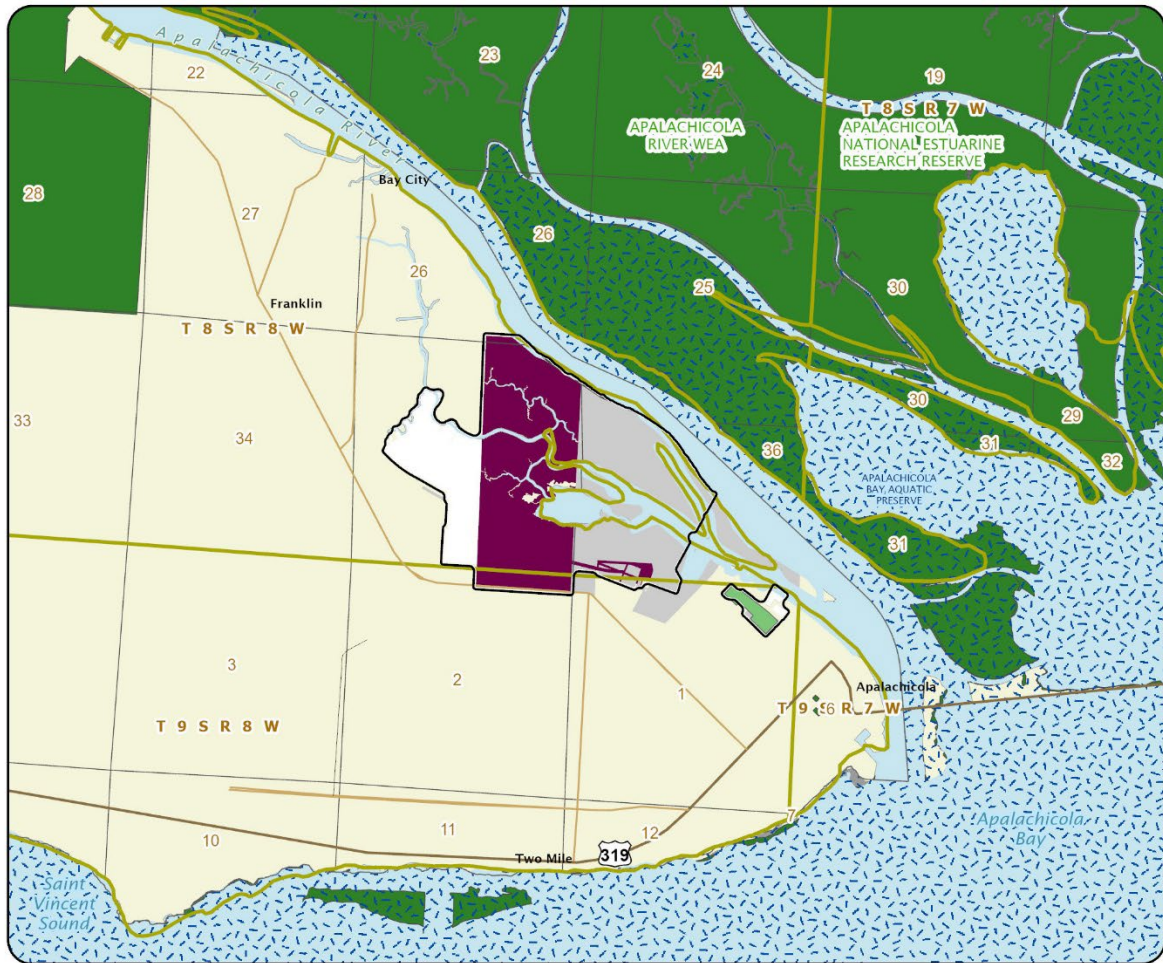


### Management Cost Summary

<u>ORCP</u>	<u>Startup</u>	<u>Recurring</u>
Source of Funds	Land Acquisition Trust Fund (LATF)	LATF
Salary	\$0	\$8,000
OPS	\$14,500	\$6,500
Expense	\$0	\$6,500
OCO	\$0	\$0
FCO	\$50,000	\$50,000
TOTAL	\$64,500	\$71,000

*Source: Management Prospectus as originally submitted*





### PIERCE MOUND COMPLEX

#### FRANKLIN COUNTY

