

St. Joe Timberland

Climate Change Lands

Bay, Franklin, Gadsden, Gulf, Leon, Liberty, Wakulla and Washington Counties

<i>Year Added to Priority List</i>	<i>2000</i>
<i>Project Acres</i>	<i>107,497</i>
<i>Acquired Acres</i>	<i>72,368</i>
<i>Remaining Project Acres</i>	<i>35,129</i>
<i>2025 Assessed Value of Remaining Acres</i>	<i>\$126,837,372</i>

Purpose for State Acquisition

The St. Joe Timberland project will consolidate the St. Joe Company ownerships already included in other projects, thus helping to preserve large undeveloped tracts of land for native plants and animals in north Florida. The project will provide the public with an opportunity to experience and recreate in large natural areas in the Florida Panhandle.

General Description

The St. Joe Timberland project includes the St. Joe Company ownerships in the following projects: Apalachicola River (Sweetwater Creek, 7,040 acres; Gadsden Glades, 360 acres; and Aspalaga Landing, 600 acres); Brevard Coastal Scrub Ecosystem (Tico site, 1,780 acres); Dickerson Bay/Bald Point (Bald Point site, 3,840 acres); Florida's First Magnitude Springs (River Sink, 40 acres; and St. Marks, 700 acres springs sites); Lake Powell (600 acres); St. Joseph Bay Buffer (250 acres); Sand Mountain (1,680 acres); Tate's Hell/Carrabelle Tract (16,000 acres); Wacissa/Aucilla River Sinks (19,840 acres); and Wakulla Springs Protection Zone (2,240 acres). The sites lie in the Panhandle from Bay and Washington counties to Taylor County, except for the Tico site in Brevard County. They include samples of almost all the natural communities in North and Central Florida, from scrub to swamps and springs.





Florida Natural Areas Inventory (FNAI) Element Occurrence Summary

<u>FNAI Elements</u>	<u>Score</u>
<i>Florida Torreya*</i>	G1/S1
Gopher tortoise	G3/S3
Swallow-tailed kite	G5/S2
Florida black bear	G5T4/S4
<i>Apalachicola rosemary*</i>	G1/S1
<i>Chapman's rhododendron*</i>	G1/S1
Fat threeridge	G1/S1
Big Blue Spring cave crayfish	G1/S1
<i>Gholson's blazing star*</i>	G1/S1
<i>Pinewoods aster*</i>	G1?/S1?
Southern elktoe	G1/S1
Woodville karst cave crayfish	G1/S1
<i>*Plant species are in italics</i>	

Public Use

The sites are designated for various public uses. The project may also help complete the Florida National Scenic Trail, a statewide non-motorized trail that crosses several Florida Forever project sites.

Acquisition Planning

1999

On December 9, 1999, the Land Acquisition and Management Advisory Council approved the creation of the St. Joe Timberland project and added it to the Conservation and Recreational Lands Priority List. The project was sponsored by the St. Joe Company, the Florida Department of Environmental Protection’s (DEP) Division of State Lands and The Nature Conservancy (TNC) and initially consisted of individual tracts owned by St. Joe Company within existing projects. Other sites will be proposed for addition to the project. Approval was given to add an additional 1,318 acres (18 acres to the Wacissa/Aucilla River Sinks project and approximately 1,300 acres to the Apalachicola River Project – Lake Wimico site) to the project boundary as essential parcels. The initial project consisted of approximately 56,218 acres. The Northwest Florida Water Management District has acquired most of the Sand Mountain site.

2000

On August 22, 2000, the Acquisition and Restoration Council (ARC) approved a fee-simple, 12,360-acre addition, known as Lake Wimico site in Gulf County, to the project boundary. It was sponsored by the Florida Fish and Wildlife Conservation Commission (FWC) and consisted of one owner, the St. Joe Company.





Also on August 22, 2000, ARC approved a fee-simple, 1,592-acre addition, known as Snipe Island, to the project boundary. It was sponsored by TNC and consisted of one owner, the St. Joe Company.

2001

On July 12, 2001, ARC approved a fee-simple, 22,260-acre addition to the project boundary. It was sponsored by FWC and consisted of one owner, the St. Joe Company. About 19,445 acres are in Jefferson County, with the remainder in Taylor County. ARC also approved a fee-simple, 2,560-acre addition to the St. Joseph Bay buffers project boundary. It was sponsored by FWC and consisted of one owner, the St. Joe Company. The property is in Gulf County.

2002

On April 25, 2002, ARC approved a fee-simple, 2,194-acre addition, known as the Tiger Hammock Conservation Area, to the project boundary. It was sponsored by Dr. John Epler and consisted of one owner, the St. Joe Company.

ARC also approved a fee-simple, 1,656-acre addition, known as Crooked Creek (1,365 acres in Gadsden and Liberty counties) and Short Creek (291 acres in Liberty County), to the project boundary. It was sponsored by TNC and consisted of one owner, the St. Joe Company.

2003

On June 6, 2003, ARC approved a fee-simple, 49,565-acre addition, known as St. Vincent Sound to Lake Wimico, to the project boundary in Gulf and Franklin counties. It was sponsored by TNC and consisted of one owner, the St. Joe Company.

2004

On June 4, 2004, ARC approved a fee-simple, 10,444-acre addition in Jefferson County, known as the Flint Rock tract, to the project boundary. It was sponsored by TNC and consisted of one owner, the St. Joe Company.

2006

On May 1, 2006, the U.S. Forest Service acquired the St. Joe Tract (320 acres).

2008

In January 2008, TNC acquired 10,905 acres known as Flint Rock.

2010

On April 6, 2010, FWC acquired approximately 2,836 acres of the Flint Rock site from TNC.





2011

On December 9, 2011, ARC voted to place this project in the Climate Change Lands category of Florida Forever.

2012

On April 20, 2012, ARC approved moving the Flint Rock tract to the Wacissa/Aucilla River Sinks Florida Forever project, as it was no longer in St. Joe ownership.

2014

On September 23, 2014, the Suwannee River Water Management District acquired Lower Aucilla (119 acres) conservation easement by donation, of which 75 acres are within the project boundary.

2016

On October 21, 2016, ARC transferred 2,456 acres from the Franklin County sites of this project to the Dickerson Bay/Bald Point project, as part of the consideration for the Bluffs of St. Teresa Florida Forever proposal.

2017

On April 21, 2017, ARC voted to add 879.5 acres of St. Joe land in two parcels in south Leon County to the project, with a tax-assessed value of \$186,620. This addition was proposed by DEP's Division of Recreation and Parks (DRP). DRP will manage the western parcel as part of Edward Ball Wakulla Springs State Park and the Florida Forest Service will manage the eastern parcel as part of Wakulla State Forest.

On August 18, 2017, ARC voted to add an 18-acre inholding in Franklin County within the Box-R Wildlife Management Area, surrounded by the Board of Trustees of the Internal Improvement Trust Fund-owned managed conservation lands, to the project. The addition had a tax-assessed value of \$83,800. This fee-simple boundary amendment was submitted by FWC.

In 2017, 10,445 acres in this project were acquired using Florida Forever program funding.

2019

On October 18, 2019, ARC approved the addition of 564 acres in Franklin County to the St. Joe Timberland Florida Forever project. If acquired, it would be managed by FWC as part of the Apalachicola River Wildlife and Environmental Area.





2020

In September 2020, two parcels containing 578.23 acres were acquired at a cost of \$720,000, of which \$200,000 was provided by the Fish and Wildlife Foundation of Florida. The land will be managed by FWC as part of the Apalachicola River Wildlife and Environmental Area.

The 20,146-acre Lake Wimico addition was acquired via donation from TNC which acquired the property with grant funding from the National Fish and Wildlife Foundation. Approximately 13,945 acres were added to the Apalachicola River Wildlife and Environmental Area, and the remaining acres (6,194) were added to Box-R Wildlife Management Area, both of which are managed by FWC.

2021

On December 10, 2021, ARC approved an addition of 370 acres in Franklin County to the project boundary.

2022

On August 12, 2022, ARC transferred the Wacissa/Aucilla River Sinks site (47,229 acres) from the St. Joe Timberland project to the Aucilla/Wacissa Watershed project, which was created on the same day.

DEP acquired, in fee, 376 acres in Franklin County along Whiskey George Creek that will be managed as part of Tate's Hell State Forest.

2025

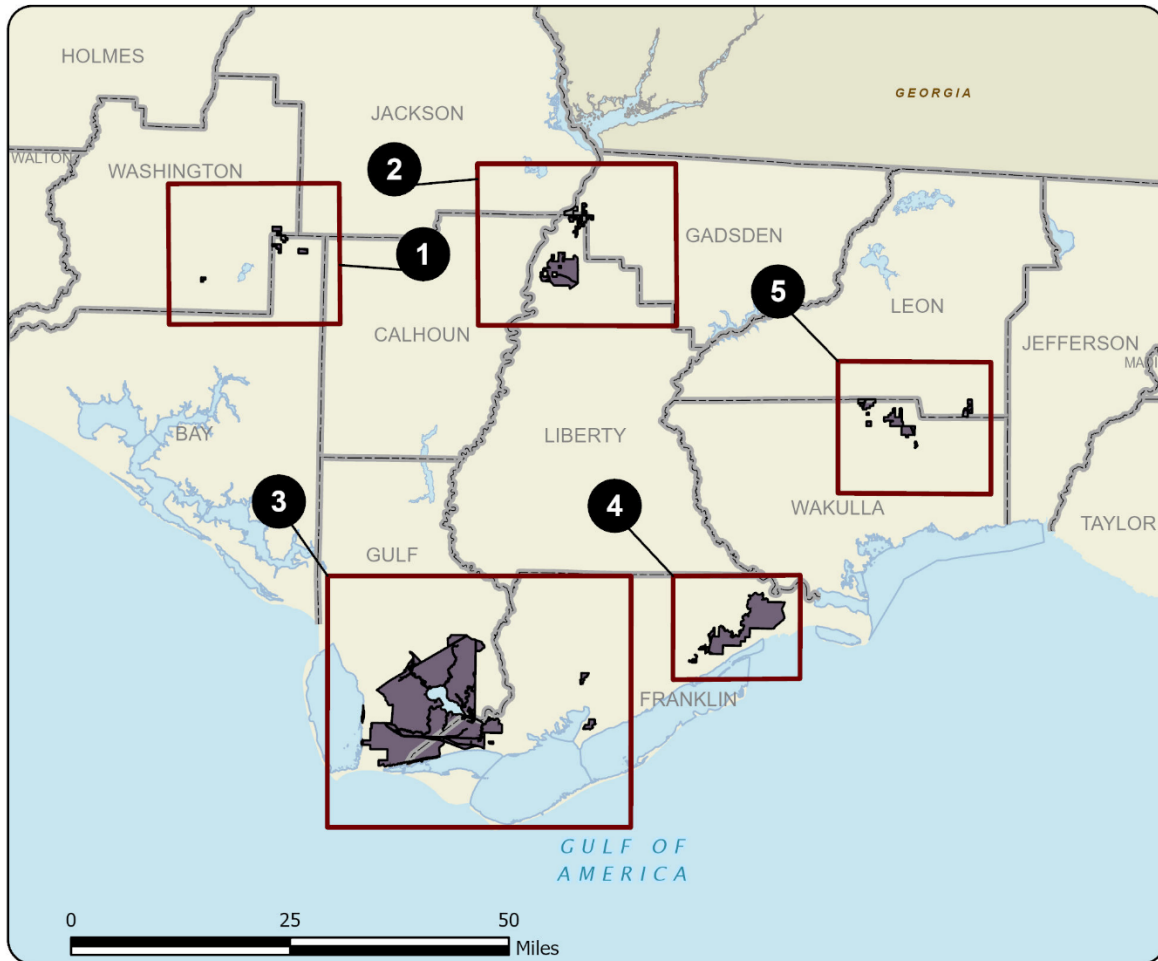
In August 2025, ARC removed approximately 641 acres from the project boundary that were deemed unsuitable for state acquisition, and an additional 3,867 acres were added to the Apalachicola River, Dickerson Bay/Bald Point, Sand Mountain and Wakulla Springs Protection Zone projects.

On December 23, 2025, DEP acquired a 10,023.45-acre conservation easement in Gulf County from The Conservation Fund.

Coordination

TNC has been an acquisition intermediary for this project.



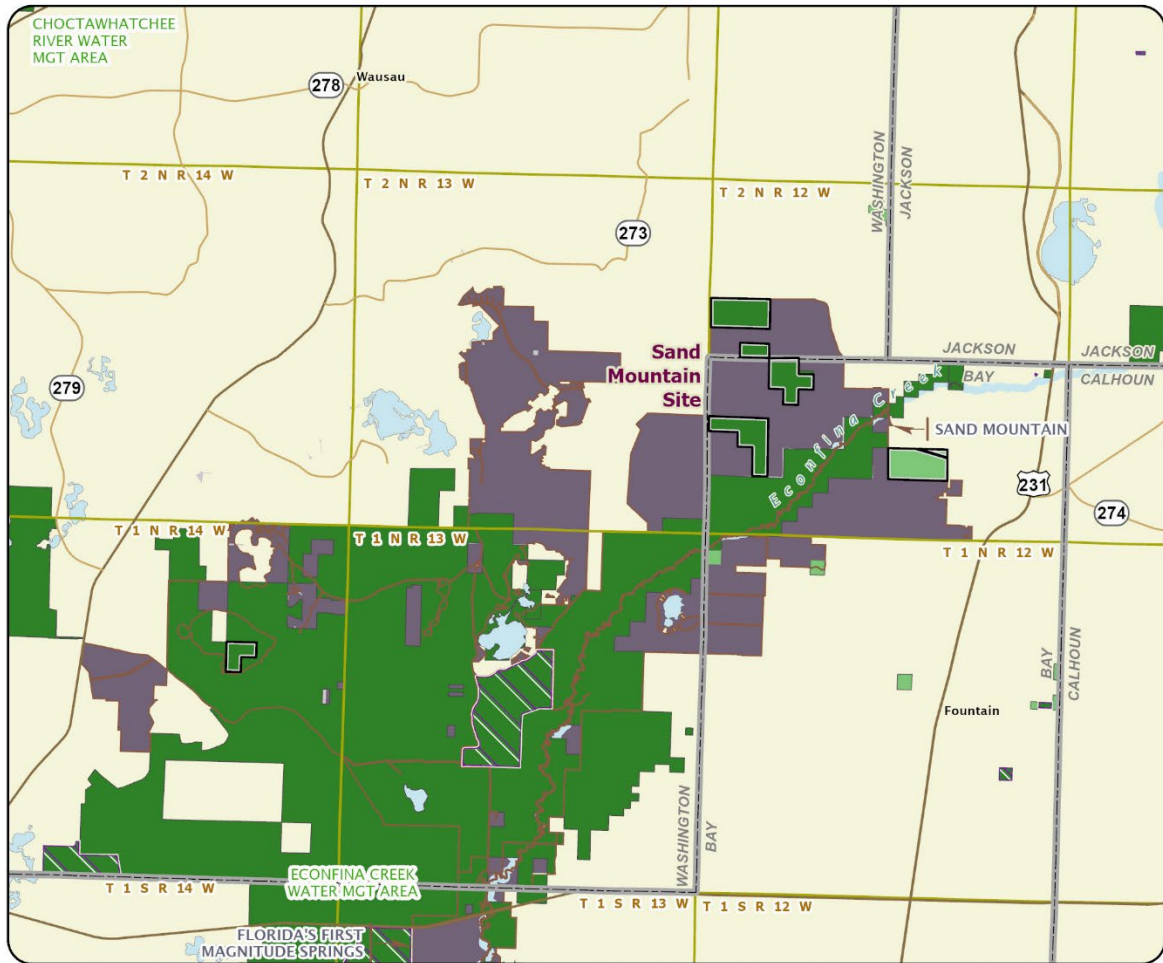


ST. JOE TIMBERLAND: OVERVIEW

BAY, FRANKLIN, GADSDEN, GULF, LEON, LIBERTY, WAKULLA, AND WASHINGTON COUNTIES

- Map 1 Sand Mountain Site
- Map 2 Apalachicola River Site
- Map 3 Holt Trustee Tract Site
- Map 3 Lake Wimico Site
- Map 3 Whiskey George Creek Timbers Site
- Map 4 Tates Hell/Carrabelle Tract Site
- Map 5 River Sink Spring Site
- Map 5 Wakulla Springs Protection Zone Site
- Map 6 St. Marks Springs Site



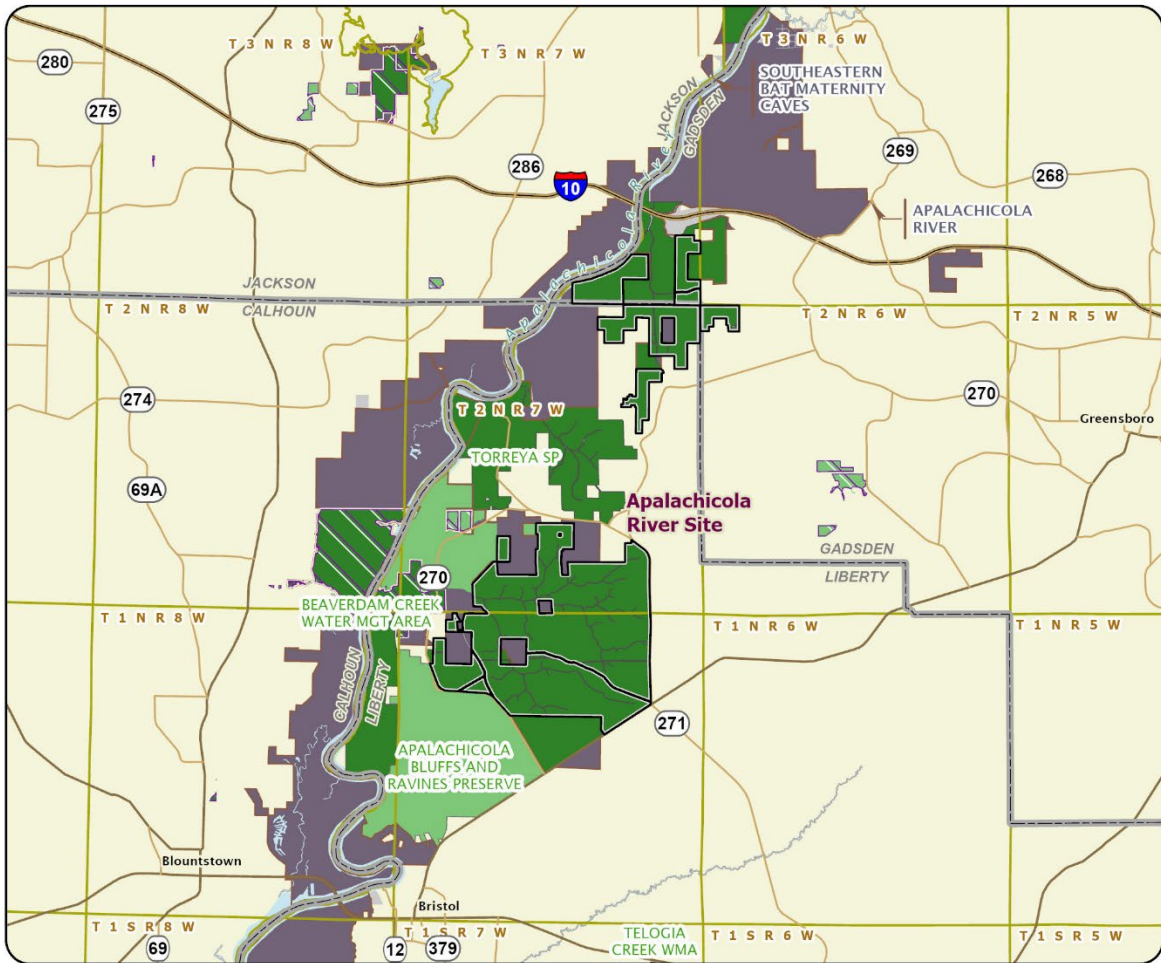


ST. JOE TIMBERLAND: MAP 1

BAY AND WASHINGTON COUNTIES

-  Florida Forever Project Boundary
-  Essential Parcels Remaining
-  Other Florida Forever Projects
-  State Conservation Lands
-  Other Conservation Lands
-  Other Public Lands
-  Less-Than-Fee Acquisition

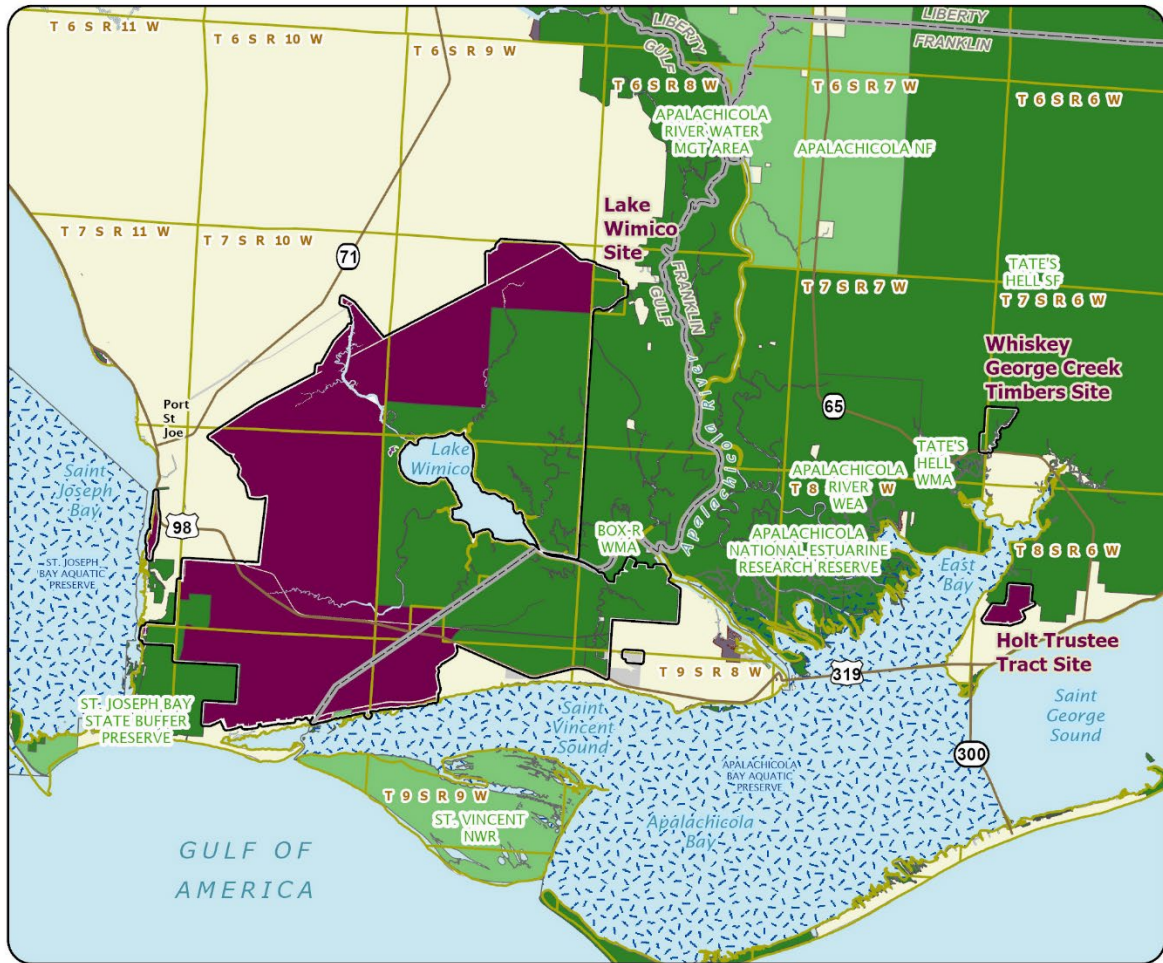




ST. JOE TIMBERLAND: MAP 2

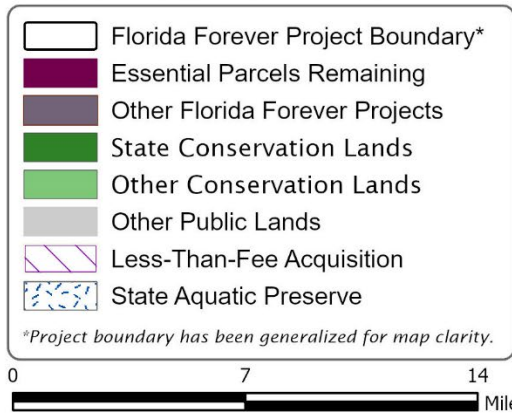
GADSDEN AND LIBERTY COUNTIES

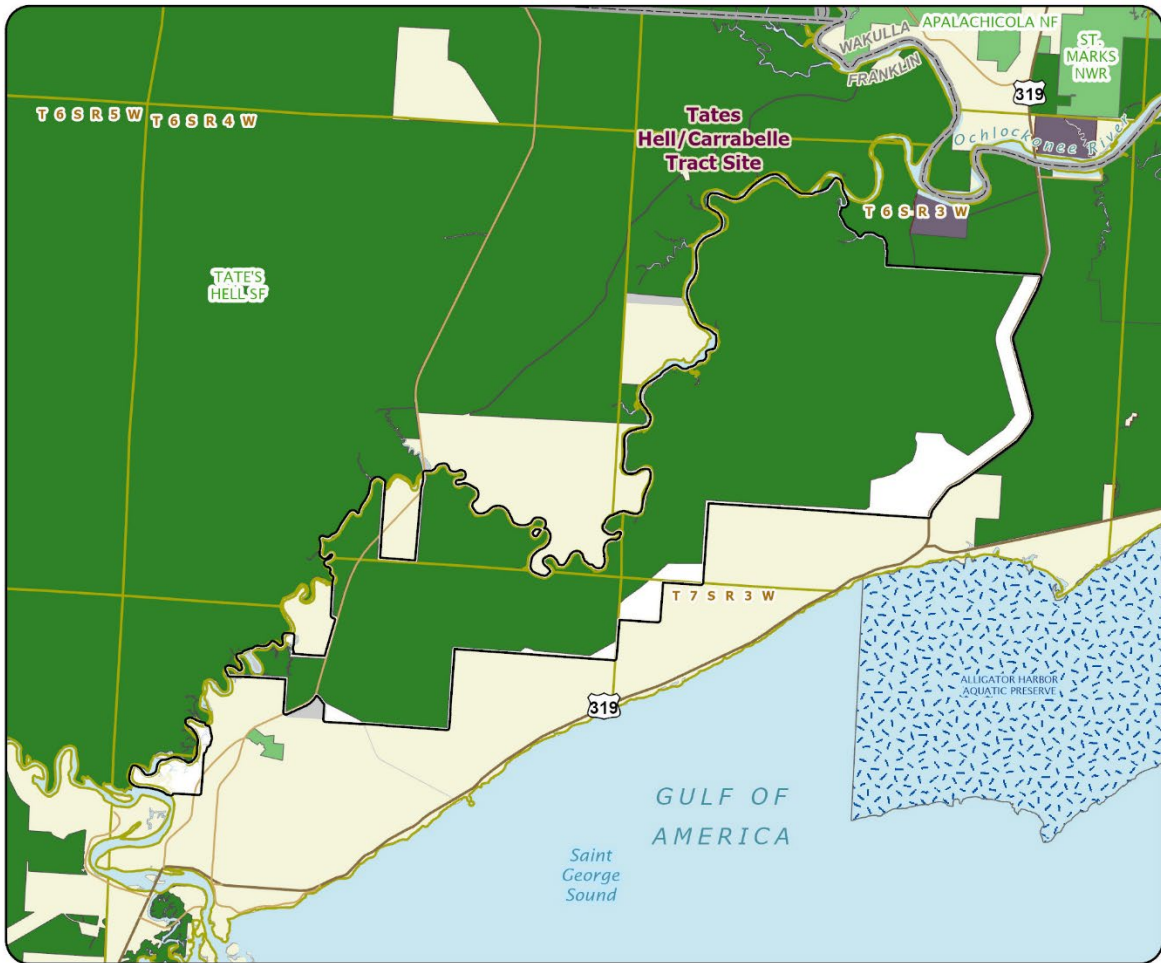




ST. JOE TIMBERLAND: MAP 3

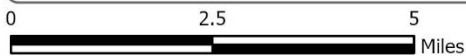
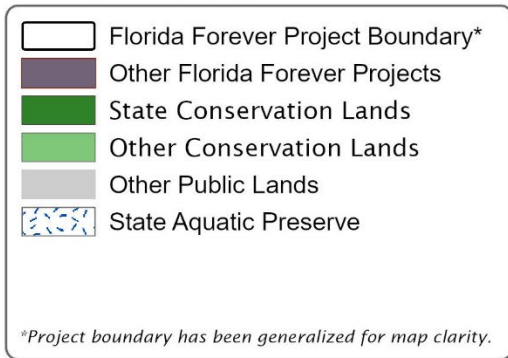
FRANKLIN AND GULF COUNTIES

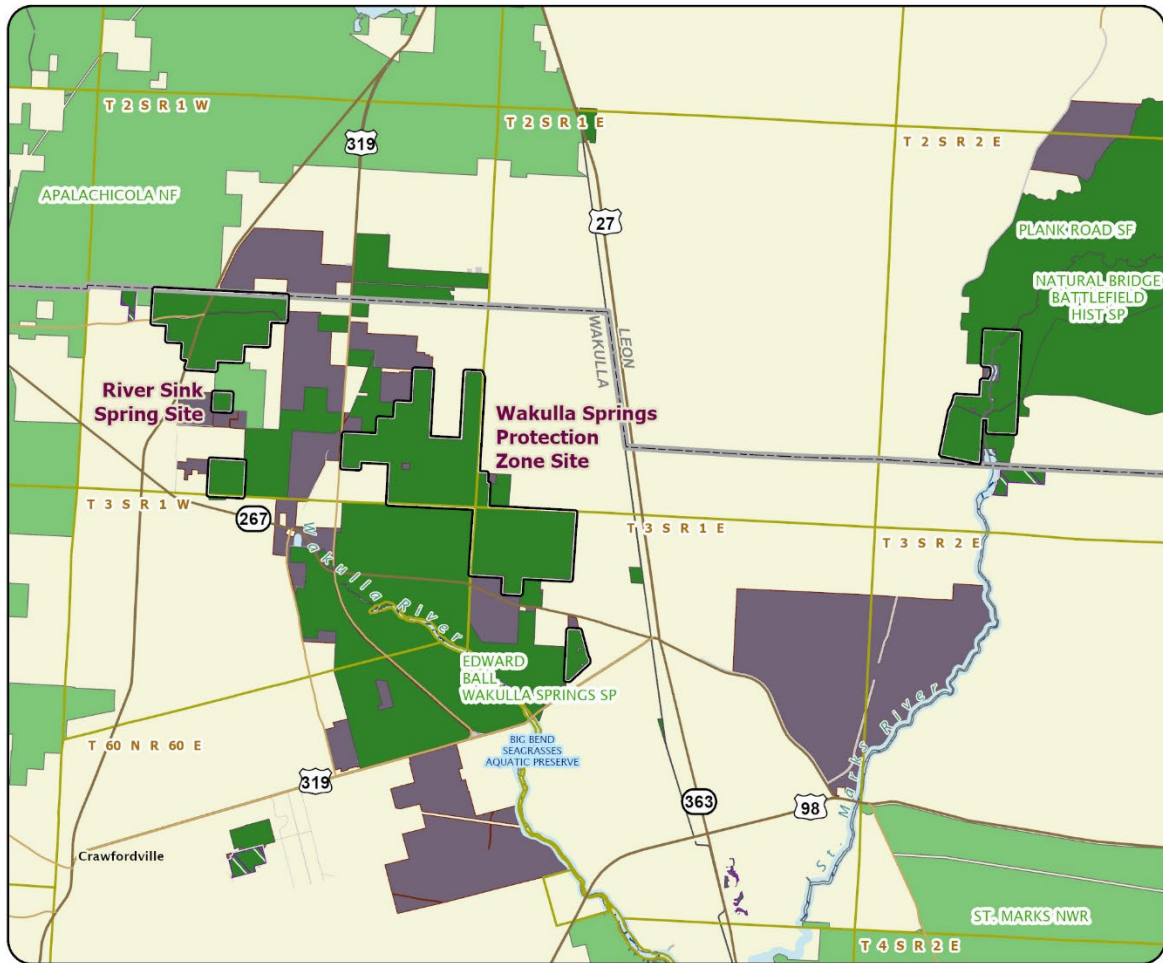




ST. JOE TIMBERLAND: MAP 4

FRANKLIN COUNTY





ST. JOE TIMBERLAND: MAP 5

WAKULLA AND LEON COUNTIES

