

Tupelo Honey Timberlands

Less-Than-Fee

Gulf County

| | |
|---|--------------------|
| <i>Year Added to Priority List</i> | <i>2024</i> |
| <i>Project Acres</i> | <i>2,179</i> |
| <i>Acquired Acres</i> | <i>0</i> |
| <i>Remaining Project Acres</i> | <i>2,179</i> |
| <i>2025 Assessed Value of Remaining Acres</i> | <i>\$7,874,361</i> |

Purpose for State Acquisition

The Tupelo Honey Timberlands project will protect the water resources of the Chipola River and St. Andrew-St. Joseph Bay watersheds, promote sustainable forestry in northwest Florida and expand ecological connectivity for wildlife.

General Description

The Tupelo Honey Timberlands project is adjacent to the western boundary of the city of Wewahitchka. The property is located 1.5 miles from the Apalachicola River Water Management Area and Dead Lakes Park. The project also underlies the Tyndall Air Force Base military operating area and is within the Northwest Florida Sentinel Landscape.

The project lies within the Lower Delta province of the Apalachicola Delta district, where landforms are shaped by fluvial processes related to the Apalachicola River and associated tributaries. The property falls within the St. Andrew-St. Joseph Bay and Chipola River watersheds and provides fresh water to St. Andrews Bay via Little Creek.

Historically, the property has been used for both silviculture and agriculture. The property suffered extensive damage during Hurricane Michael in 2018 and the pine plantations are being actively reforested. Wet flatwoods is the most abundant natural community (16%), with large tracts present in the central, southeastern and western areas of the property. Dome swamps and basin swamps are enveloped by wet flatwoods. Pine plantations make up the largest proportion of the site's land cover overall (68%), and most of the uplands are planted in slash





pine or longleaf pine. Planted pines range in age from seedlings to young trees, while the understory composition varies with the recency of site preparation and planting.

An approximately 60-acre artificial pond is present in the central area of the project. The pond is ecologically viable to waterfowl and wading birds, and Florida black bear (*Ursus americanus floridanus*) have been observed, per the land managers, using the island at the center of the pond. Invasive plants are common, although largely confined to scattered dense patches in areas with historic or recent disturbance.

The property’s various wetlands provide foraging and potential nesting sites for wading birds. Imperiled species known to nest nearby include the wood stork (*Mycteria americana*) and little blue heron (*Egretta caerulea*).

Florida Natural Areas Inventory (FNAI) Element Occurrence Summary

| <u>FNAI Elements</u> | <u>Score</u> |
|----------------------|--------------|
| Florida black bear | G5T4/S4 |

Public Use

The Tupelo Honey Timberlands project is proposed for less-than-fee acquisition with no public access.

Acquisition Planning

2024

On April 12, 2024, the Acquisition and Restoration Council voted to add the Tupelo Honey Timberlands project to the 2025 Florida Forever Priority List.

Management Policy Statement

As a less-than-fee acquisition, the Tupelo Honey Timberlands project would be managed by the landowner as outlined in the conservation easement.

Manager

If acquired as less-than-fee, management responsibility of the Tupelo Honey Timberlands project would remain with the landowner. Periodic monitoring of the site’s management to confirm continued conservation easement compliance will be coordinated by the Department of Environmental Protection’s Division of State Lands.

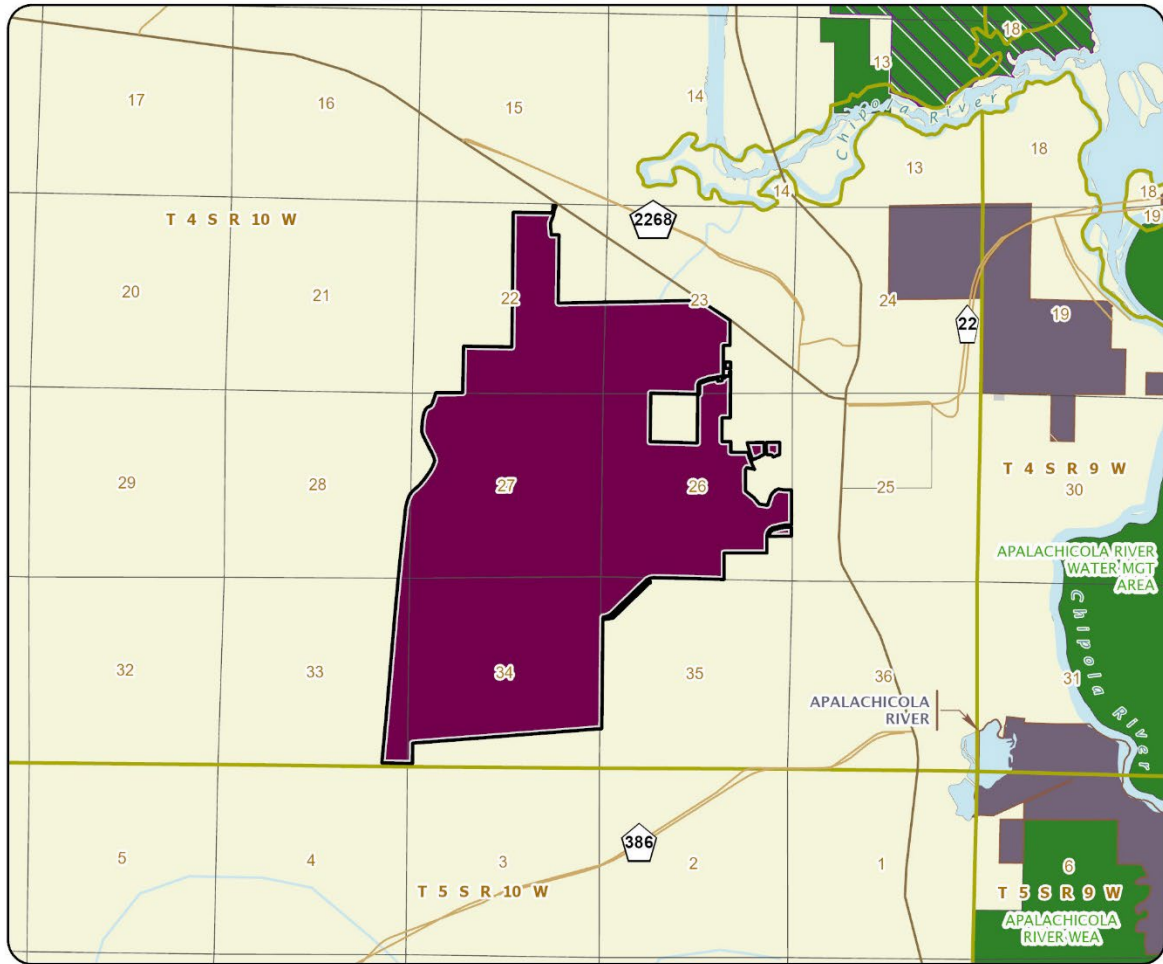




Management Prospectus

If acquired as less-than-fee, management responsibility of the Tupelo Honey Timberlands project would remain with the landowner. Periodic monitoring to confirm continued conservation easement compliance would be coordinated by DEP's Division of State Lands.





TUPELO HONEY TIMBERLANDS

GULF COUNTY

-  Florida Forever Project Boundary
-  Essential Parcels Remaining
-  Other Florida Forever Projects
-  State Conservation Lands
-  Other Public Lands
-  Less-Than-Fee Acquisition

