

Lochloosa Wildlife

Substantially Complete

Alachua

| | |
|---|--------------|
| <i>Year Added to Priority List</i> | 1994 |
| <i>Project Acres</i> | 37,773 |
| <i>Acquired Acres</i> | 33,327 |
| <i>Cost of Acquired Acres</i> | \$11,379,952 |
| <i>Remaining Project Acres</i> | 4,446 |
| <i>2020 Assessed Value of Remaining Acres</i> | \$7,648,550 |

Purpose for State Acquisition

The Lochloosa Wildlife project will conserve the large lakes, flatwoods, and prairies in southeast Alachua County to protect habitat for many wildlife species such as Florida black bear, osprey, and wood storks and maintain the water quality found in these critical wetland habitats. The project will protect forested lands that link Newnan's Lake, Lochloosa Lake, Orange Lake, and Paynes Prairie and provide a scenic natural area for boating, fishing, hiking and hunting.

General Description

The project encompasses significant resources associated with Lochloosa Lake (particularly large populations of birds of prey), a bird rookery used by wood storks, and possibly the largest intact mesic flatwoods remaining in Alachua County. Tracts in intensive timber production account for more than half the project acreage. Magnesia Springs supports the only known population in the world of the freemouth hydrophobe snail. Nineteen other rare or endangered species are known to occur on site, including wood stork, Florida sandhill crane, and Florida black bear.

The good quality surface waters in the project are a significant hydrological resource and the project will also buffer several Outstanding Florida Waters in the vicinity.

FNAI Element Occurrence Summary

| FNAI Elements | Score |
|-------------------------|-----------|
| Florida black bear | G5T4/S4 |
| Striped newt | G2G3/S2 |
| Eastern indigo snake | G3/S2? |
| Gopher tortoise | G3/S3 |
| Wood stork | G4/S2 |
| Osprey | G5/S3S4 |
| Freemouth hydrobe snail | G1/S1 |
| Florida sandhill crane | G5T2/S2 |
| Gopher frog | G2G3/S3 |
| Blackbanded sunfish | G3G4/S1S3 |
| Mud sunfish | G4G5/S3 |
| Bald eagle | G5/S3 |

Public Use

The project would be designated as a WMA.

Acquisition Planning

2011

Essential tracts within this project include Georgia Pacific (SJRWMD has acquired a conservation easement over 10,300 acres surrounding Lake Lochloosa), Franklin Crates, Concora (Container Corp./Wachovia), Goethe, and Brown.

On December 9, 2011, this project was placed in the Substantially Complete list of Florida Forever projects.

Coordination

The SJRWMD is an acquisition partner.

Management Policy Statement

The primary goals of management of the Lochloosa Wildlife project are to conserve and protect significant habitat for native species or endangered and threatened species; to conserve, protect, manage, or restore important ecosystems, landscapes, and forests, in order to enhance or protect significant surface water, coastal, recreational, timber, fish or wildlife resources which local or state regulatory programs cannot adequately protect; to provide areas, including recreational trails, for natural-resource- based recreation; and to preserve significant archaeological or historical sites.

Manager(s)

The Florida Fish and Wildlife Conservation Commission (FWC)



Management Prospectus

Conditions affecting intensity of management

The Lochloosa Wildlife project is an area in imminent danger of development and in high need of intense resource management and protection. The large pine plantations will require restoration.

Management implementation, Public access, Site security and Protection of infrastructure

Within the first year after acquisition, management will concentrate on site security, natural resource management and conceptual planning. Public-use facilities will be developed in succeeding years.

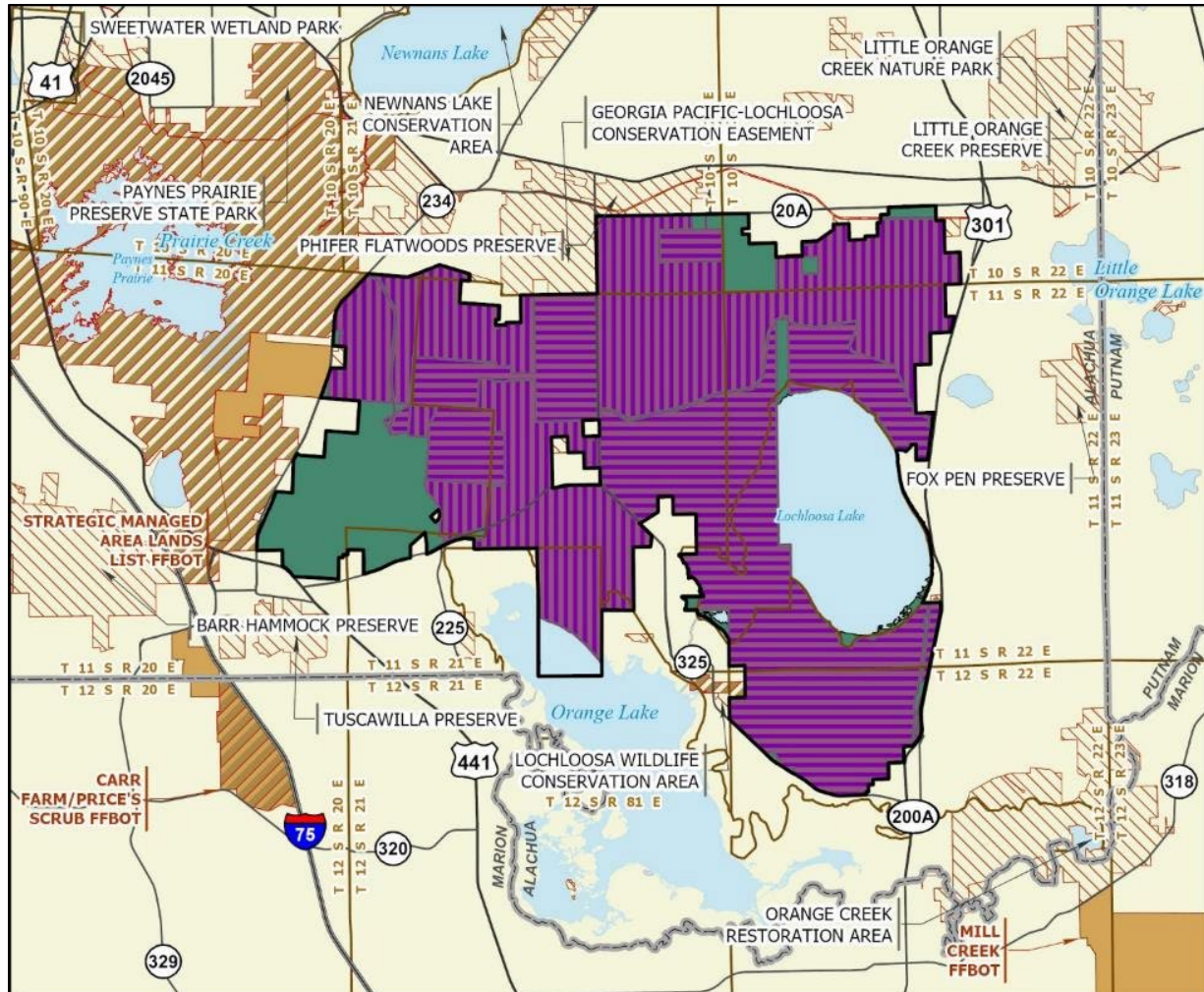
Revenue-generating potential

No significant revenue is expected to be generated initially. As public use is increased, modest revenue may be generated.

Cooperators in management activities

FFS is recommended as a cooperator to assist with forest management.





LOCHLOOSA WILDLIFE

ALACHUA COUNTY

-  Florida Forever BOT Project Boundary
-  Acquired for Conservation (Fee Simple)
-  Acquired for Conservation (Less-Than-Fee)
-  Essential Parcel(s) Remaining
-  State Owned Conservation Lands
-  Other Conservation Lands
-  Other Florida Forever BOT Projects



JANUARY 2020

Map 1: FNAI, January 2020

