

Northeast Florida Timberlands and Watershed Reserve

Partnerships & Regional Incentives

Clay, Duval, Nassau

<i>Year Added to Priority List</i>	2002
<i>Project Acres</i>	147,431
<i>Acquired Acres</i>	72,914
<i>Cost of Acquired Acres</i>	\$141,546,558
<i>Remaining Project Acres</i>	74,518
<i>2020 Assessed Value of Remaining Acres</i>	\$1,198,366,618

Purpose for State Acquisition

The Northeast Florida Timberlands and Watershed Reserve Project will increase the protection of Florida's biodiversity at the species, natural community, and landscape levels by protecting habitat for species including the Florida black bear, gopher tortoise, eastern indigo snake, and red-cockaded woodpecker. The project will conserve spaces suitable for greenways or outdoor recreation that are compatible with conservation purposes such as camping, picnicking, nature appreciation, hiking, and horseback riding. The project has the potential to restore the quality and natural functions of land, water, and wetland systems because 75-80 percent of land is disturbed with restoration a primary objective.

General Description

This project describes a northeast-southwest diagonal along the west side of Duval County, stretching from the Nassau River north of Jacksonville to Trail Ridge in Clay County, near the town of Lawtey. Another section of the project makes a north-south connection about 12 miles long, between the Camp Blanding Military Reservation and the Etoniah Creek State Forest. About 75 percent of this land is used, or has been used, for silviculture. It also includes mesic flatwoods, cypress and hardwood swamp, sandhills and associated plant communities.

FNAI Element Occurrence Summary

FNAI Elements	Score
Red-cockaded woodpecker	G3/S2
Eastern indigo snake	G3/S2?
Gopher tortoise	G3/S3
Swallow-tailed kite	G5/S2
Florida black bear	G5T4/S4
<i>Florida toothache grass</i>	G2/S2
<i>variable-leaf crownbeard</i>	G2/S2
<i>hartwrightia</i>	G2/S2
<i>giant orchid</i>	G2G3/S2
<i>Thorne's beaksedge</i>	G3/S1S2
Painted bunting, eastern population	G5T3Q/S1S2
<i>Bartram's ixia</i>	G2G3/S2S3

Public Use

FFS will promote recreation and environmental education in the natural environment. There is a possibility of an intermediate and long-term need for some type of developed recreation facilities. If such facilities are developed, the use of low-impact, rustic facilities will be stressed. If an organized recreation area is desired, it will be assessed and evaluated to minimize any possible adverse effects on the natural environment. Unnecessary roads, firelines and hydrological disturbances will be abandoned and/or restored to the greatest extent practical.

Acquisition Planning

2001

On December 6, 2001, the ARC recommended the Northeast Florida Timberlands and Watershed Reserve project for Group A of the Florida Forever 2002 Priority list. This fee-simple and less-than-fee acquisition, located in Clay, Duval and Nassau Counties, and sponsored by TNC, the City of Jacksonville, and SJRWMD, consisted of approximately 132,450 acres, more than 150 landowners, and a 2001 taxable value of \$50,158,195.

The following 37 ownerships were identified as essential: Gilman, Jackson, Carter, Owen, Nemours, Miller, Bostwick, Klieg, Bullock, 1st Bank and Trust, Rayonier, International Paper, Motes, Boyd, South Regional Industrial Realty, East Fiftone Partners, Monticello Drugs, St. Joe, Barnett Bank Trustee, Anheuser-Busch, Inc., Travelers Ins., Foster, Tison, Castleton, Wright, Buck, Logan, Higgenbotham, Betz, Ogilvie, Milne, Kaleel and Roberts, Grey, Sythe, Pharr, Wilkinson, and Helmer.

2003

On June 6, 2003, the ARC approved a 506-acre addition, known as the Norfolk Southern property, to the project boundary in Duval County. The fee-simple acquisition, sponsored by TNC, consisted of a single owner, Southern Region Industrial Realty Inc., and had a 2002 taxable value of \$408,700.



On December 5, 2003, the ARC approved a 7,043-acre addition, known as the Four Creeks Forest tract, to the project boundary in Nassau County. The fee-simple acquisition, sponsored by the SJRWMD, consisted of one landowner, Rayonier Timberlands Operating Co. LP, and a 2002 taxable value of \$1,478,838.

2004

On December 3, 2004, the ARC approved a 3,500-acre addition, known as the Bull Creek tract, to the project boundary in Clay County. The fee-simple acquisition, sponsored by SJRWMD, consisted of one landowner, Ventura LLC, and a taxable value of \$760,646.

2006

On June 30, 2006, the BOT purchased 1,651 acres within the Florida Forever project boundary.

2007

On February 16, 2007, the ARC approved a fee-simple, 2,665-acre addition to the Bull Creek portion of the project boundary. It was sponsored by the SJRWMD, consisted of one landowner, 1621 Venture II LLC, nine parcels, and a taxable value of \$445,189. FFS will manage these essential parcels

2010

On November 5, 2010, DSL purchased 15 acres (Rayonier Forest Resources, L.P.--\$18,108 with FF funds) for FFS to manage.

2011

On April 25, 2011, 3.95 acres in Four Creeks State Forest/Pacett) were donated. FFS will manage.

On December 9, 2011, the ARC placed this project in the Partnerships and Regional Incentives category of Florida Forever projects.

2018

On February 16, 2018, the ARC voted to expand the boundary of the project to include approximately 300 acres in Nassau County (Studdard Tract), a partial inholding within the Four Creeks State Forest.

The ARC also voted to add a parcel to the Northeast Florida Timberlands and Watershed Reserve during the August 2018 meeting. This 52-acre parcel in Nassau County is an inholding in the Four Creeks State Forest, near Highway A1A.

Coordination

In 1992, the 172-acre Jacksonville-Baldwin Rail Trail was acquired with Florida Greenways and Trails funds. This trail which meanders through the project is managed by the City of Jacksonville. SJRWMD is an acquisition partner in areas of the project to help protect the multiple creeks and rivers. The National Guard Bureau through a Memorandum of Agreement (MOA) is an acquisition partner in areas of the project to help buffer and prevent encroachment of Camp Blanding. TNC, City of Jacksonville, Duval County, FCT, and the U.S. Navy are considered partners in this project.



Management Policy Statement

FFS proposes to manage the project under a multiple-use management regime consistent with FFS management of the Cary State Forest, the Jennings State Forest and the Cecil Field Conservation Corridor, all of which are adjacent to this project. The acquisition goals and objectives as approved by the ARC would include timber management and restoration, low-impact diverse recreation uses, and management of archaeological and historic sites, habitat and other biological resources.

Manager(s)

FFS will be the primary manager. The City of Jacksonville is manager for the 172-acre Jacksonville-Baldwin Rail Trail.

Management Prospectus

Qualifications for state designation

The project's size and diversity make it desirable for use and management as a state forest. Management by FFS as a state forest is contingent on acquiring fee-simple title to the core parcels adjacent to the existing state forests and to approximately 60 percent of the project.

Conditions affecting intensity of management

Much of the parcel has been disturbed by past pine plantings and will require restoration work. This area of Florida is experiencing rapid urban growth, so that any prescribed burning to restore the forest will have to be carefully planned. The level of management and the related management costs are expected to initially be high to obtain necessary information to restore and manage portions as a state forest. It is recognized that a portion of the project will be less-than-fee simple. This technique is valuable on the fringes of urban growth because it allows the landowners to manage the property as they have been managing it, and continuing to produce forest products for Florida's economy, while protecting the property from conversion to urban growth.

Management implementation, Public access, Site security and Protection of infrastructure

Once the core areas of the project are acquired and assigned to FFS, initial public access will be provided for diverse, low-intensity outdoor recreation activities. Initial and intermediate management efforts will concentrate on site security, public and resource management access, prescribed burns, reforestation, and restoration activity.

Revenue-generating potential

Timber sales will be conducted as needed to improve or to maintain the desirable ecosystem conditions. These sales will primarily take place in the marketable pine stands and will provide a variable source of revenue, depending on a variety of factors. The existing condition of the timber stands on the property is such that the revenue-generating potential is expected to be moderate. Other compatible state forest sources of income will be considered. It is anticipated that management funding will come from the Conservation and Recreation Lands Trust Fund.



Cooperators in management activities

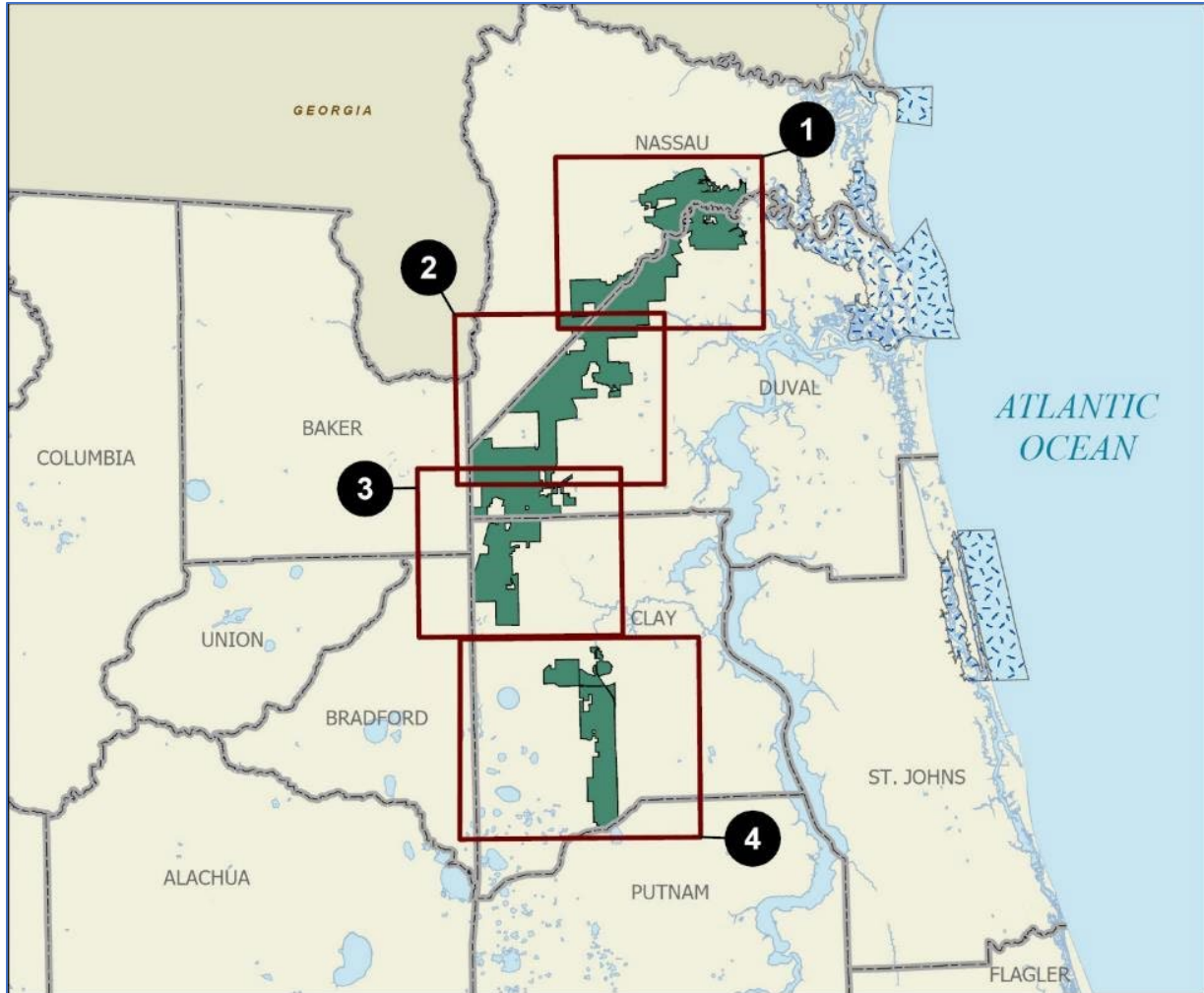
FFS will cooperate with, and seek the assistance of, other state agencies, local government agencies, other interested parties as appropriate, and with FNAI. FFS intends to coordinate with FWC regarding game and non-game management activity and related public use of the property.

Management Cost Summary

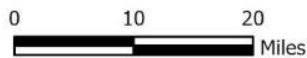
<u>FWC</u>	<u>Cost</u>
Source of Funds	CARL
Salary (4 FTEs)	\$154,357
Expense	\$620,000
OCO	\$148,075
TOTAL	\$887,007

Source: Management Prospectus as originally submitted





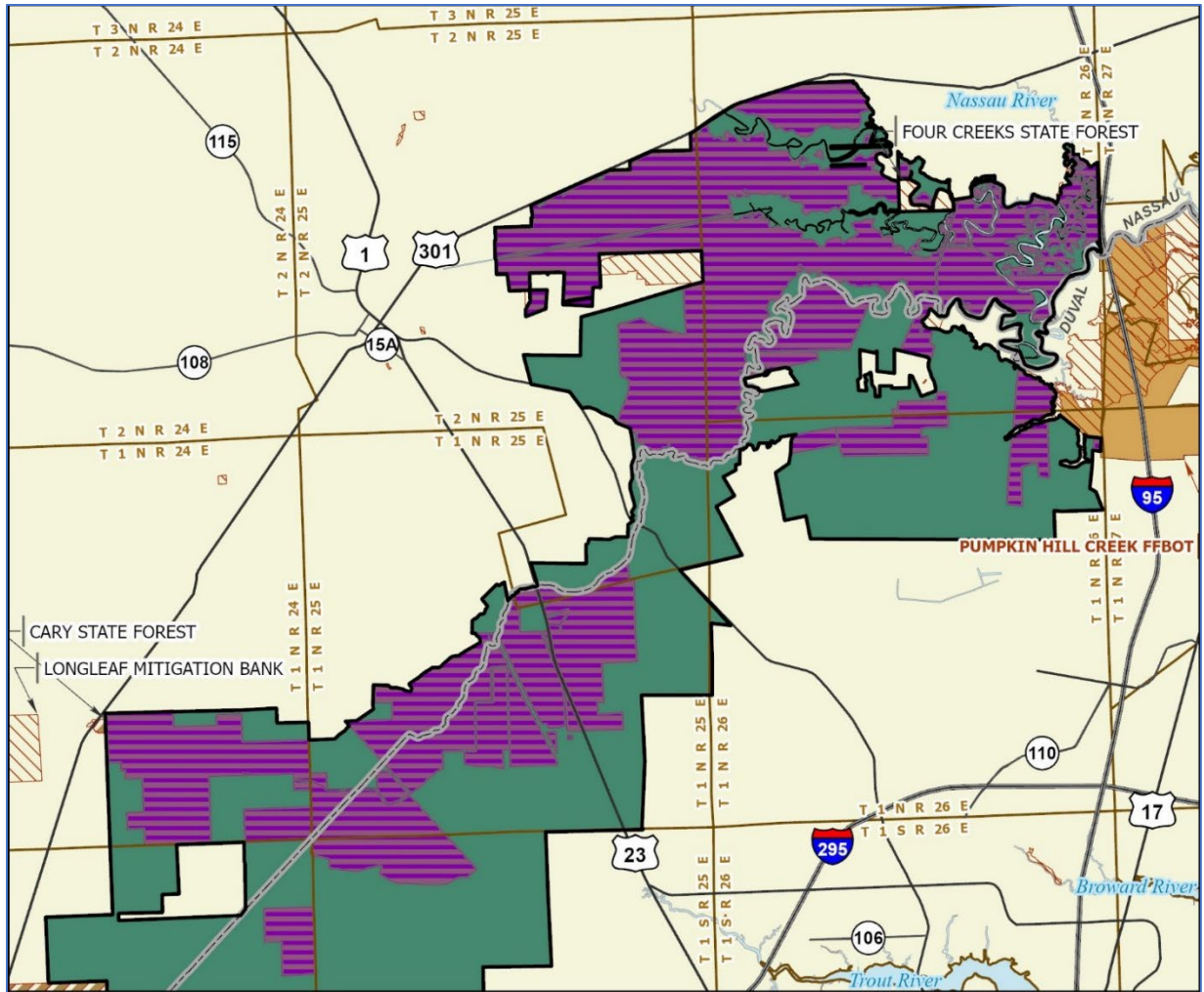
NORTHEAST FLORIDA TIMBERLANDS AND WATERSHED RESERVE: OVERVIEW
CLAY, DUVAL, AND NASSAU COUNTIES



JANUARY 2020

Map 1: FNAI, January 2020





NORTHEAST FLORIDA TIMBERLANDS AND WATERSHED RESERVE: MAP 1

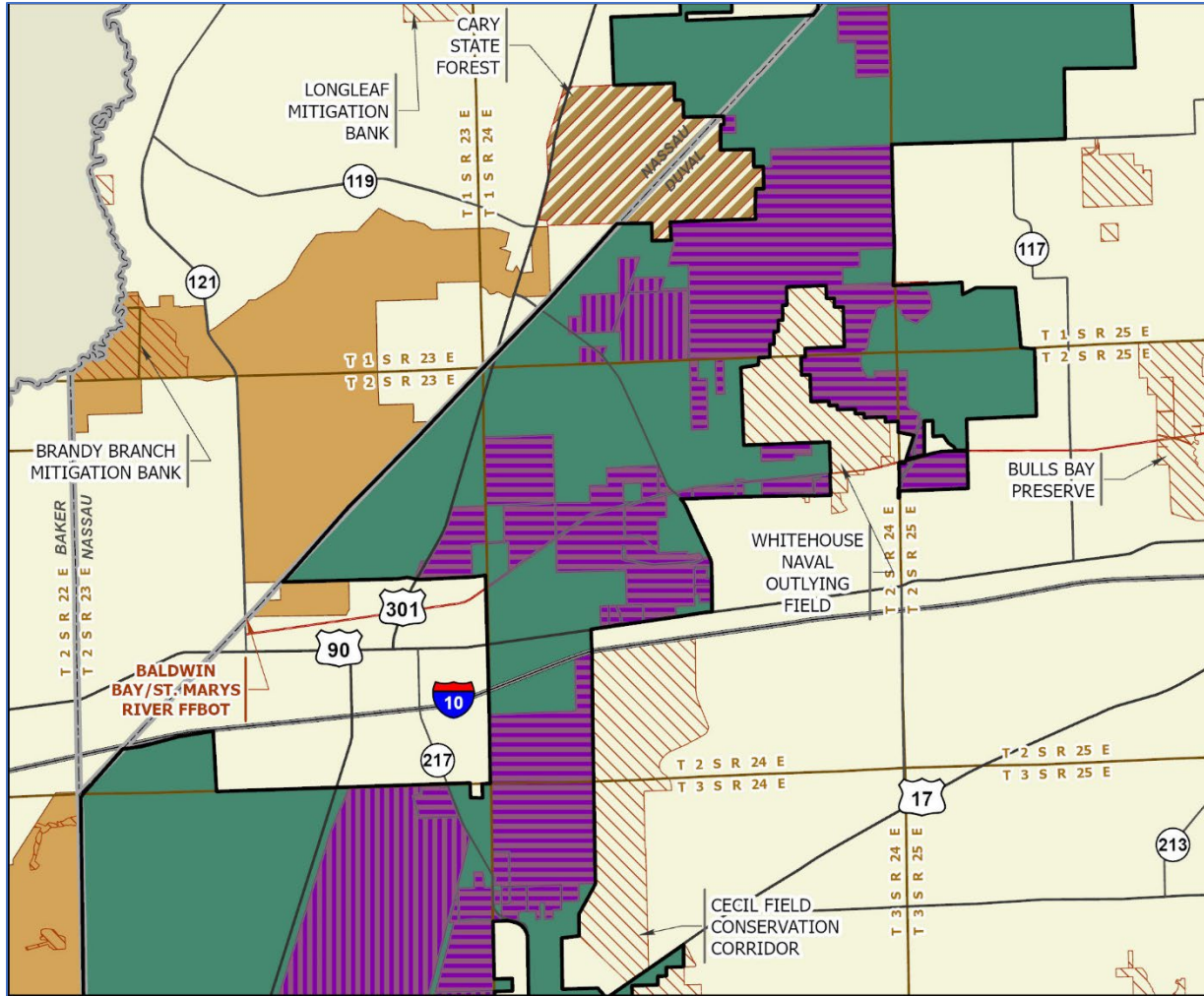
DUVAL AND NASSAU COUNTIES

-  Florida Forever BOT Project Boundary
-  Acquired for Conservation (Fee Simple)
-  Acquired for Conservation (Less-Than-Fee)
-  Essential Parcel(s) Remaining
-  State Owned Conservation Lands
-  Other Conservation Lands
-  Other Florida Forever BOT Projects



FEBRUARY 2021

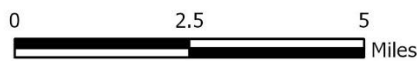
Map 2: FNAI, February 2021



NORTHEAST FLORIDA TIMBERLANDS AND WATERSHED RESERVE: MAP 2

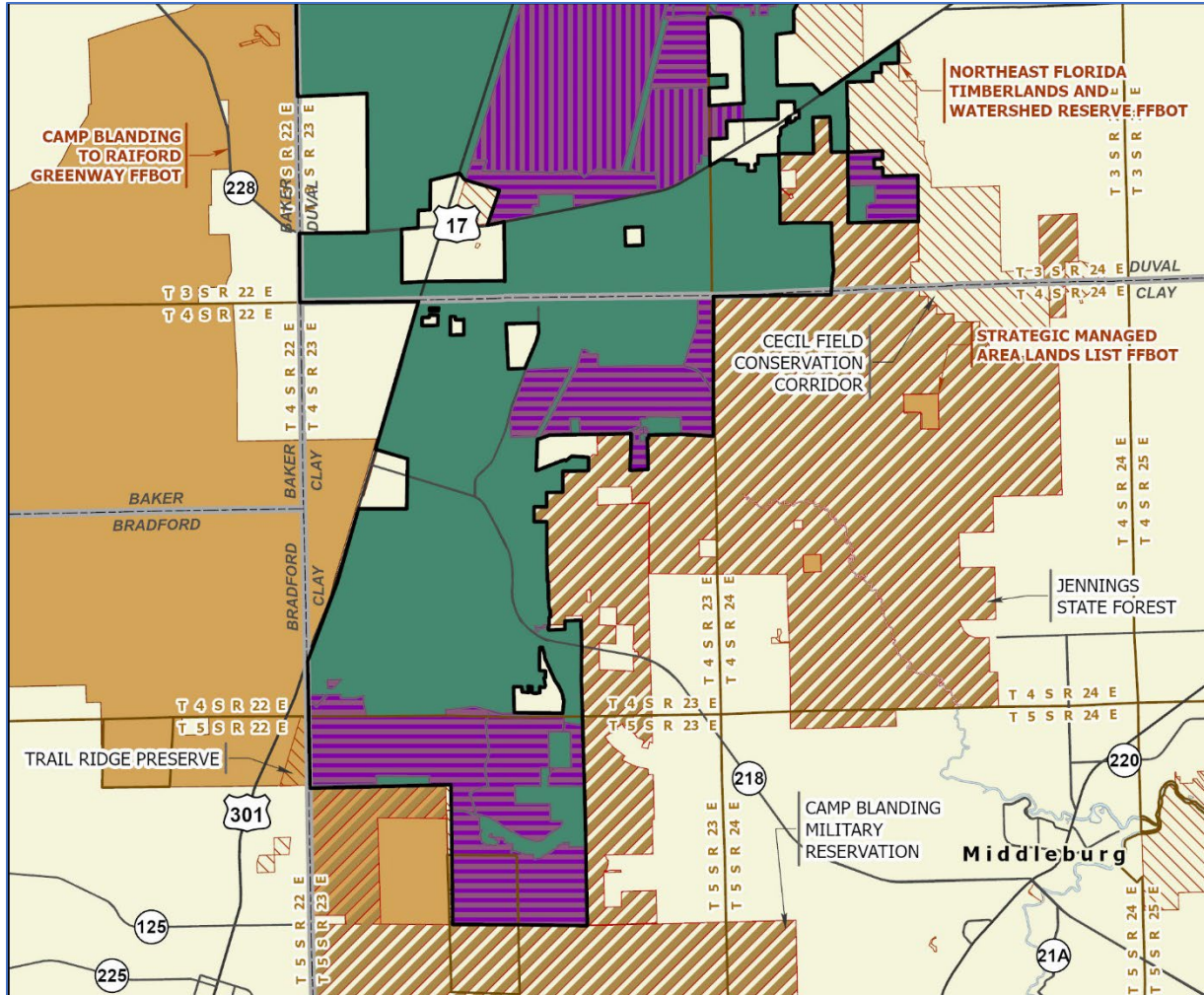
DUVAL AND NASSAU COUNTIES

-  Florida Forever BOT Project Boundary
-  Acquired for Conservation (Fee Simple)
-  Acquired for Conservation (Less-Than-Fee)
-  Essential Parcel(s) Remaining
-  State Owned Conservation Lands
-  Other Conservation Lands
-  Other Florida Forever BOT Projects



FEBRUARY 2022

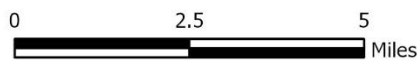
Map 3: FNAI, February 2022



NORTHEAST FLORIDA TIMBERLANDS AND WATERSHED RESERVE: MAP 3

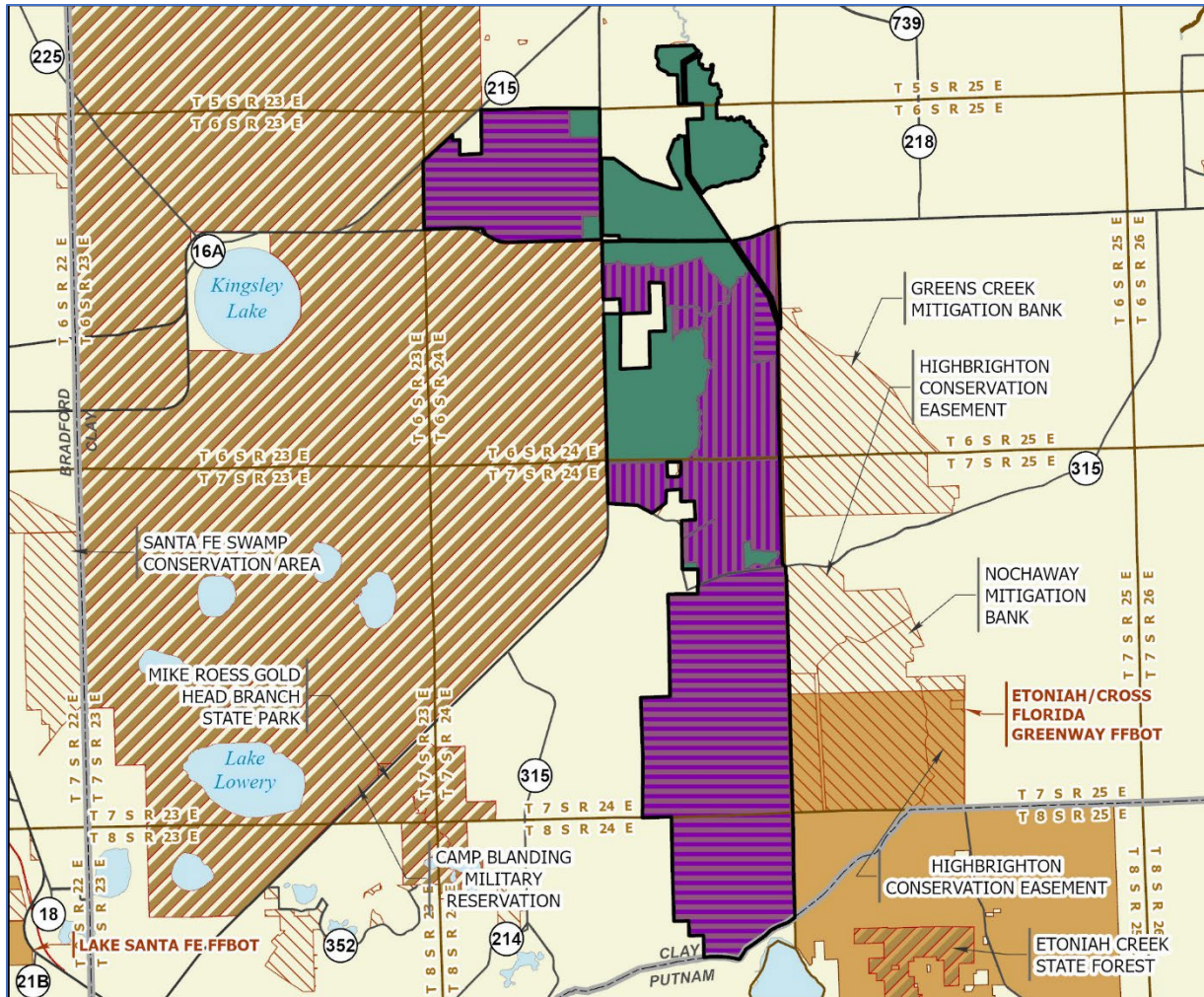
CLAY AND DUVAL COUNTIES

-  Florida Forever BOT Project Boundary
-  Acquired for Conservation (Fee Simple)
-  Acquired for Conservation (Less-Than-Fee)
-  Essential Parcel(s) Remaining
-  State Owned Conservation Lands
-  Other Conservation Lands
-  Other Florida Forever BOT Projects



FEBRUARY 2022

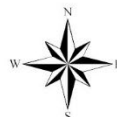
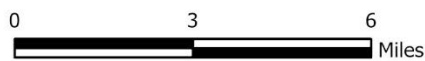
Map 4: FNAI, February 2022



NORTHEAST FLORIDA TIMBERLANDS AND WATERSHED RESERVE: MAP 4

CLAY COUNTY

-  Florida Forever BOT Project Boundary
-  Acquired for Conservation (Fee Simple)
-  Acquired for Conservation (Less-Than-Fee)
-  Essential Parcel(s) Remaining
-  State Owned Conservation Lands
-  Other Conservation Lands
-  Other Florida Forever BOT Projects



FEBRUARY 2022

Map 5: FNAI, February 2022

