

Perdido Pitcher Plant Prairie

Critical Natural Lands

Escambia

<i>Year Added to Priority List</i>	1995
<i>Project Acres</i>	6,880
<i>Acquired Acres</i>	4,491
<i>Cost of Acquired Acres</i>	\$27,299,939
<i>Remaining Project Acres</i>	2,389
<i>2020 Assessed Value of Remaining Acres</i>	\$24,249,398

Purpose for State Acquisition

The pine flatwoods and swamps west of Pensacola are interspersed with wet grassy prairies dotted with carnivorous pitcher plants that are some of the last remnants of a landscape unique to the northern Gulf Coast. The Perdido Pitcher Plant Prairie project will conserve these prairies and the undeveloped land surrounding the area. The project will support the water quality of Perdido Bay and Big Lagoon and provide the public with a wealth of opportunities to learn about and enjoy this natural land. Acquisition of this project is essential to the US Navy's base-buffering initiative.

General Description

The project covers a large undeveloped area of undulating topography where low ridges of ancient dune lines alternate with slightly lower intervening swales that drain east or west parallel to the Gulf coast and includes 2.5 miles of frontage on Perdido Bay. The wet prairies in this area are some of the last examples of perhaps the most diverse plant community in the southeast. They support one of the largest stands of white-topped pitcher plants in Florida along with almost 100 other plant species. The prairies still have intact ecotones of basin swamp, scrub, sandhill, and mesic flatwood communities. The large expanses of flatwoods and basin swamps in the site provide habitat for many species of animals. No archaeological sites are known in the project. The uplands on the site are moderately vulnerable to development, particularly in the Tarkiln Bayou area.

FNAI Element Occurrence Summary

<u>FNAI Elements</u>	<u>Score</u>
<i>Wherry's redflower pitcherplant</i>	G3T3/S3
<i>Escambia crayfish</i>	G2/S2
<i>large-leaved jointweed</i>	G3/S3

Public Use

This project is designated for use as a state park, providing opportunities for swimming, fishing, boating, camping, hiking and nature appreciation.

Acquisition Planning

1994

On December 7, 1994, the LAAC added the Perdido Pitcher Plant Prairie project to the CARL Priority list. This fee-simple acquisition proposal, sponsored by FNAI, consisted of approximately 5,515 acres, multiple owners, and a 1993 taxable value of \$3,210,940.

1998

On October 15, 1998, the LAAC redefined the essential parcels.

On December 3, 1998, the LAAC approved a fee-simple, 385-acre addition to the project boundary. It was sponsored by the Friends of the Prairie group, consisted of 23 owners, and a 1997 taxable value of \$380,371.

Acquisition work is proceeding on the important resource areas and in areas needed for connectivity and optimum management. Two large ownerships within the project boundary remain to be acquired, along with several smaller parcels. Significant pitcher plant prairies in sections 11, 12, 20 and 21 and the area surrounding Tarkiln Bayou and Garcon Swamp are important first priorities.

2010

In April 2010, the ARC voted to remove 658 acres because of existing residential, commercial and infrastructure development.

2011

On December 9, 2011, the ARC placed this project in the Critical Natural Lands list of projects.

Coordination

TNC, as an intermediary in this project, is considered a partner as well as the NFWFMD.

Management Policy Statement

The primary goals of management of the Perdido Pitcher Plant Prairie project are to conserve and protect environmentally unique and irreplaceable lands that contain native, relatively unaltered flora and fauna representing a natural area unique to, or scarce within, a region of this state or a larger geographic area; to conserve and protect significant habitat for native species or endangered and threatened species; and to conserve, protect, manage, or restore important ecosystems, landscapes, and forests, in order to enhance or protect significant surface water, coastal, recreational, timber, fish or wildlife resources which local or state regulatory programs cannot adequately protect. Secondary goals are to provide areas, including recreational trails, for natural-resource-based recreation; and to preserve significant archaeological or historical sites.

Manager(s)

DRP is the recommended manager. Lands acquired within the project boundary are being managed as Tarkiln Bayou Preserve State Park.



Management Prospectus

Qualifications for state designation

The project has the size and resource diversity to provide for uses and natural-resource-based recreational activities that are compatible with the protection of rare and sensitive resources under the state park system.

Conditions affecting intensity of management

The Perdido Pitcher Plant Prairie Project is a high-need management area requiring intensive resource management and protection. Depending on the nature and extent of public use determined by the management plan process, there may be additional needs for management of public-use activities and facilities.

Management implementation, Public access, Site security and Protection of infrastructure

Within the first year after acquisition, management activities will concentrate on site security, natural and cultural resource protection, and efforts toward the development of a plan for long-term public use and resource management consistent with the stated goals and objectives of the approved Perdido Pitcher Plant Prairie Project Assessment.

Revenue-generating potential

No significant revenue is expected to be generated initially. After the initial acquisition, it will probably be several years before any significant public-use facilities are developed. The amount of any future revenue generated would depend on the nature and extent of public use and facilities.

Cooperators in management activities

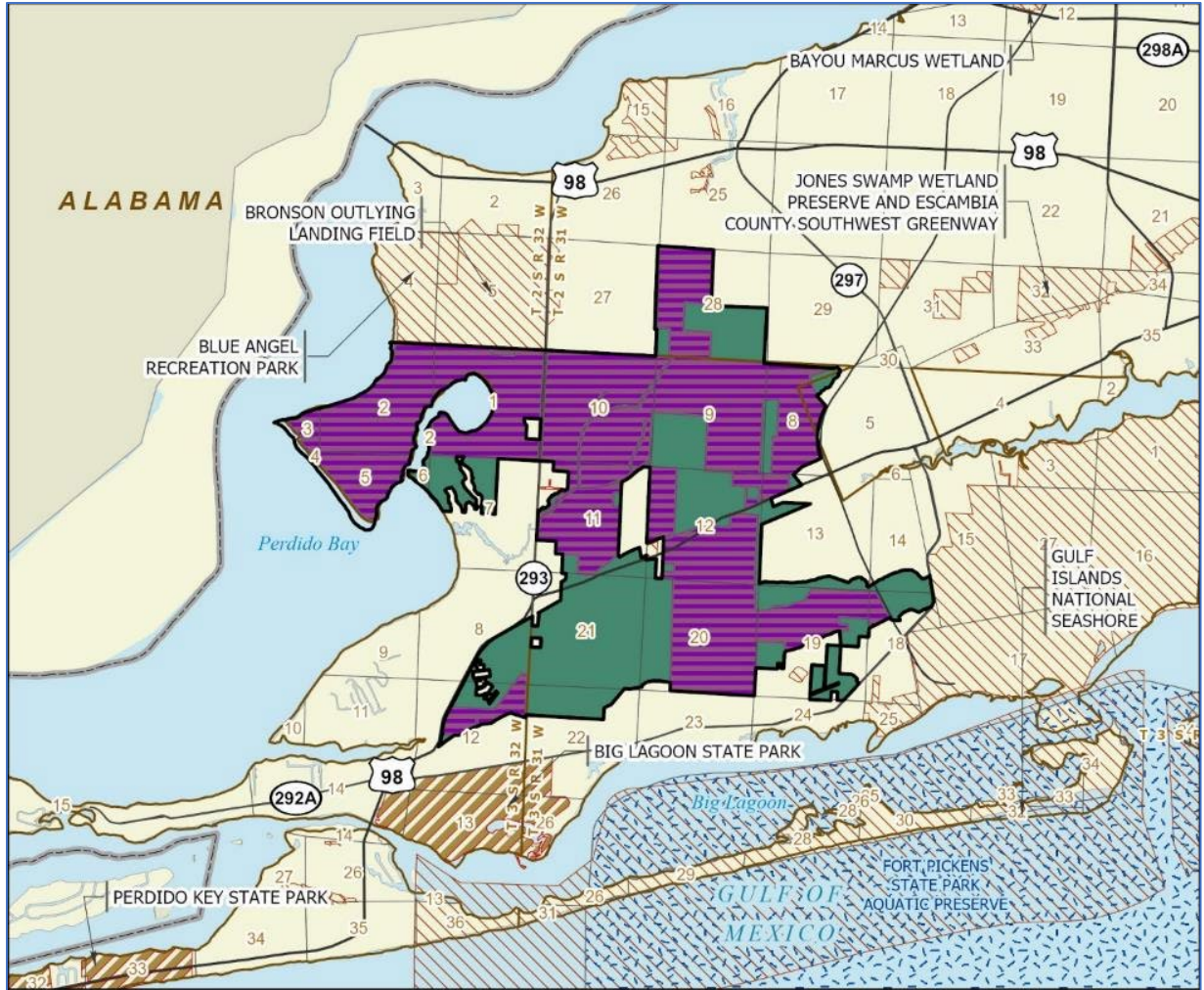
No local governments or others are recommended for management of this project.

Management Cost Summary

<u>DRP</u>	<u>Startup</u>	<u>Recurring</u>
Source of Funds	CARL	CARL
Salary	\$50,515	\$50,515
OPS	\$10,000	\$10,000
Expense	\$61,307	\$61,307
OCO	\$106,000	\$1,000
FCO	\$178,000	\$0
TOTAL	\$405,822	\$122,822

Source: Management Prospectus as originally submitted

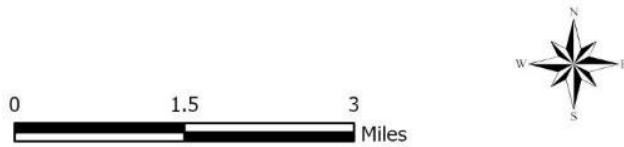




PERDIDO PITCHER PLANT PRAIRIE

ESCAMBIA COUNTY

-  Florida Forever BOT Project Boundary
-  Acquired for Conservation (Fee Simple)
-  Essential Parcel(s) Remaining
-  State Owned Conservation Lands
-  Other Conservation Lands
-  State Aquatic Preserve



JANUARY 2020

Map 1: FNAI, January 2020

