

Pinhook Swamp

Critical Natural Lands

Baker, Columbia

<i>Year Added to Priority List</i>	1992
<i>Project Acres</i>	183,954
<i>Acquired Acres</i>	130,217
<i>Cost of Acquired Acres</i>	\$65,183,376
<i>Remaining Project Acres</i>	53,737
<i>2020 Assessed Value of Remaining Acres</i>	\$66,095,122

Purpose for State Acquisition

The Pinhook Swamp project will protect and restore a natural area of pine flatwoods and swamps linking the Osceola National Forest, the Okefenokee National Wildlife Refuge, and the Suwannee River. The project will provide a huge unpopulated tract of land for wildlife such as the Florida black bear and sandhill crane. The project will maintain the water flows from this area to the Okefenokee Swamp, Suwannee River, and St. Mary's River. This will provide the public with a large, near-wilderness tract in which to enjoy various recreational activities, from simple nature appreciation to active hunting and fishing.

General Description

The Pinhook Swamp project consists of a large tract of mostly wet flatwoods, floodplain swamp, and floodplain forest between Osceola National Forest and Okefenokee Swamp National Wildlife Refuge. It provides a linkage between these managed areas as well as increased protection for this wetlands/flatwoods ecosystem, which is important for the long-term conservation of the state-threatened Florida black bear and other animals. Pinhook Swamp also provides excellent habitat for other wetland-dependent species such as the state-threatened Florida sandhill crane. The Swamp is connected to the Suwannee River, St. Mary's River and the Okefenokee Swamp. The archaeological and historic value of the project is low to moderate. The greatest threats to the area are intensive silviculture and mining. The Deep Creek Drainage Tract protects buffer areas of four tributaries of the Suwannee River and much of the watershed of Deep Creek and serves as a corridor between the Osceola National Forest, Big Shoals State Park, and SRWMD lands along the river.

FNAI Element Occurrence Summary

FNAI Elements	Score
Florida black bear	G5T4/S4
Florida sandhill crane	G5T2/S2
Gopher tortoise	G3/S3
Swallow-tailed kite	G5/S2
<i>large rosebud orchid</i>	G4/S1
<i>pondspice</i>	G3?/S2
Carpenter frog	G4/S1
Many-lined salamander	G5/S1
Gopher frog	G2G3/S3
Blackbanded sunfish	G3G4/S1S3
Spotted turtle	G5/S2S3
Timber rattlesnake	G4/S3

Public Use

The Pinhook Swamp is designated as a forest with such uses as fishing, hunting, canoeing, camping and hiking. The Deep Creek site will be designated for use as a state park and a state forest, with such public uses as fishing, boating, hunting, camping, hiking and environmental education.

Acquisition Planning

The large Rayonier tract connecting the Osceola National Forest to the Okefenokee National Wildlife Refuge has been acquired by the state. It will be used as the basis for a land-and-minerals exchange with the USFS. Pinhook Swamp: Phase I (essential) consists of large tracts adjacent to Okefenokee National Wildlife Refuge and Osceola National Forest—J.W. Langdale Woodlands, Inc. and Jefferson Smurfit Corp./Carnegie US Steel Pension Funds. Phase II is the “Impassable Bay” tract—ITT Rayonier/Sam Summers (acquired by USFS through TNC) and all remaining owners.

1996

On July 16, 1996, the LAMAC added 18,100 acres to the project boundary. Additionally, the LAMAC approved the addition of federal mineral rights under state-owned lands to the Pinhook project for exchange purposes.

2000

On August 22, 2000, the ARC added 25,000 acres to the Pinhook Swamp project boundary.

2001

At the April 6, 2001, ARC meeting, the Suwannee Buffers, Deep Creek Site was combined with the Pinhook Swamp project boundary.

2002

On October 24, 2002, the ARC added 4,585 acres to the project boundaries.



2004

On June 4, 2004, the ARC added 31,225 acres in Baker County, previously assumed to be included, as part of a 2000 boundary amendment, in the boundaries of the Pinhook Swamp project

The BOT acquired 8,311 acres in August 2005 through five conservation easements.

2011

On December 9, 2011, the ARC placed this project in the category of Critical Natural Lands.

2020

On December 11, 2020, the ARC approved an addition of 147.5-acres in Hamilton County to the project boundary.

Coordination

Pinhook Swamp is a shared acquisition with the USFS. TNC is an intermediary in the purchase of some tracts for the federal government. The Deep Creek site is on the SRWMD five-year plan for land acquisition. SJRWMD is also considered a partner.

Management Policy Statement

Pinhook Swamp: The primary goals of management of the Pinhook Swamp project are: to conserve and protect significant habitat for native species or endangered and threatened species; to conserve, protect, manage, or restore important ecosystems, landscapes, and forests, in order to enhance or protect significant surface water, coastal, recreational, timber, fish or wildlife resources which local or state regulatory programs cannot adequately protect; and to provide areas, including recreational trails, for natural-resource-based recreation.

Suwannee Buffers (Deep Creek): The primary goals of management of this part of the project are: to conserve and protect environmentally unique and irreplaceable lands that contain native, relatively unaltered flora and fauna representing a natural area unique to, or scarce within, a region of this state or a larger geographic area; to conserve, protect, manage, or restore important ecosystems, landscapes, and forests, in order to enhance or protect significant surface water, coastal, recreational, timber, fish or wildlife resources which local or state regulatory programs cannot adequately protect; and to provide areas, including recreational trails, for natural-resource-based recreation.

Manager(s)

FFS, DRP and USFS are the recommended managers.

Management Prospectus: Pinhook Swamp**Qualifications for state designation**

The Pinhook Swamp is a large area of timbered flatwoods and swamps between the Osceola National Forest and the Okefenokee National Wildlife Refuge. Its large size, strategic location, and forest and wildlife resources qualify it as a state forest and state wildlife management area.



Conditions affecting intensity of management

Pinhook is a low-need (moderate need) tract.

Management implementation, Public access, Site security and Protection of infrastructure

A portion of the site would immediately fall under the National Forests in Florida's Land and Resource Management Plan (Forest Plan) and a portion under state protection. Management activities will focus on site security, resource inventory and management, plus any necessary prescribed fire management.

Revenue-generating potential

In cooperation with FWC, this area may one day provide revenues from quota hunts. FFS will soon be working with FWC to obtain a projected revenue. State and National Forest user fees are other sources of revenue.

Cooperators in management activities

FWC and FWS, which manages the Okefenokee National Wildlife Refuge adjacent to Pinhook's northern boundary, will be cooperators in managing the area.

Management Prospectus: Suwannee Buffers**Qualifications for state designation**

The southern part of the Deep Creek Drainage tract has unique resources that qualify it as a unit of the state park system. The project's size and diversity also make it highly desirable for use and management as a state forest.

Conditions affecting intensity of management

The southern portion of the Deep Creek Drainage tract is a high-need management area including public recreational use and development compatible with resource management. On the areas to be managed by the FFS there are no known major disturbances that will require extraordinary attention, so the level of management intensity is expected to be typical for a state forest.

Management implementation, Public access, Site security and Protection of infrastructure

Within the first year after acquisition of the areas to be managed by DRP, management activities will concentrate on site security, natural and cultural resource protection, and efforts toward the development of a plan for long-term public use and resource management. FFS will provide public access for low-intensity, non-facilities-related outdoor recreation. Initial activities will include securing the site, providing public and fire management accesses, inventorying resources, and removing trash. FFS will provide access to the public while protecting sensitive resources. The project's natural resources and threatened and endangered plants and animals will be inventoried to provide the basis for a management plan. Long-range plans of FFS will generally be directed toward restoring disturbed areas to their original conditions, as far as possible, as well as protecting threatened and endangered species. An all-season burning program will use, whenever possible, existing roads, black lines, foam lines and natural breaks to contain fires. Timber management will mostly involve improvement thinning and



regeneration harvests. Plantations will be thinned and, where appropriate, reforested with species found in natural ecosystems. Stands will not have a targeted rotation age. Infrastructure will primarily be in disturbed areas and will be the minimum required for management and public access. FFS will promote environmental education.

Revenue-generating potential

DRP expects no significant revenue to be generated initially. After acquisition, it will probably be several years before any significant public facilities are developed. The amount of any future revenue generated would depend on the nature and extent of public use and facilities. FFS will sell timber as needed to improve or maintain desirable ecosystem conditions. These sales will provide a variable source of revenue, but the revenue-generating potential for this project is expected to be low.

Management Cost Summary

<u>DRP</u>	<u>Startup</u>	<u>Recurring</u>
Source of Funds	LATF	LATF
Salary	\$22,167	\$22,167
OPS	\$14,560	\$14,560
Expense	\$11,400	\$11,400
OCO	\$55,000	\$1,000
FCO	\$85,000	\$0
TOTAL	\$188,127	\$49,127

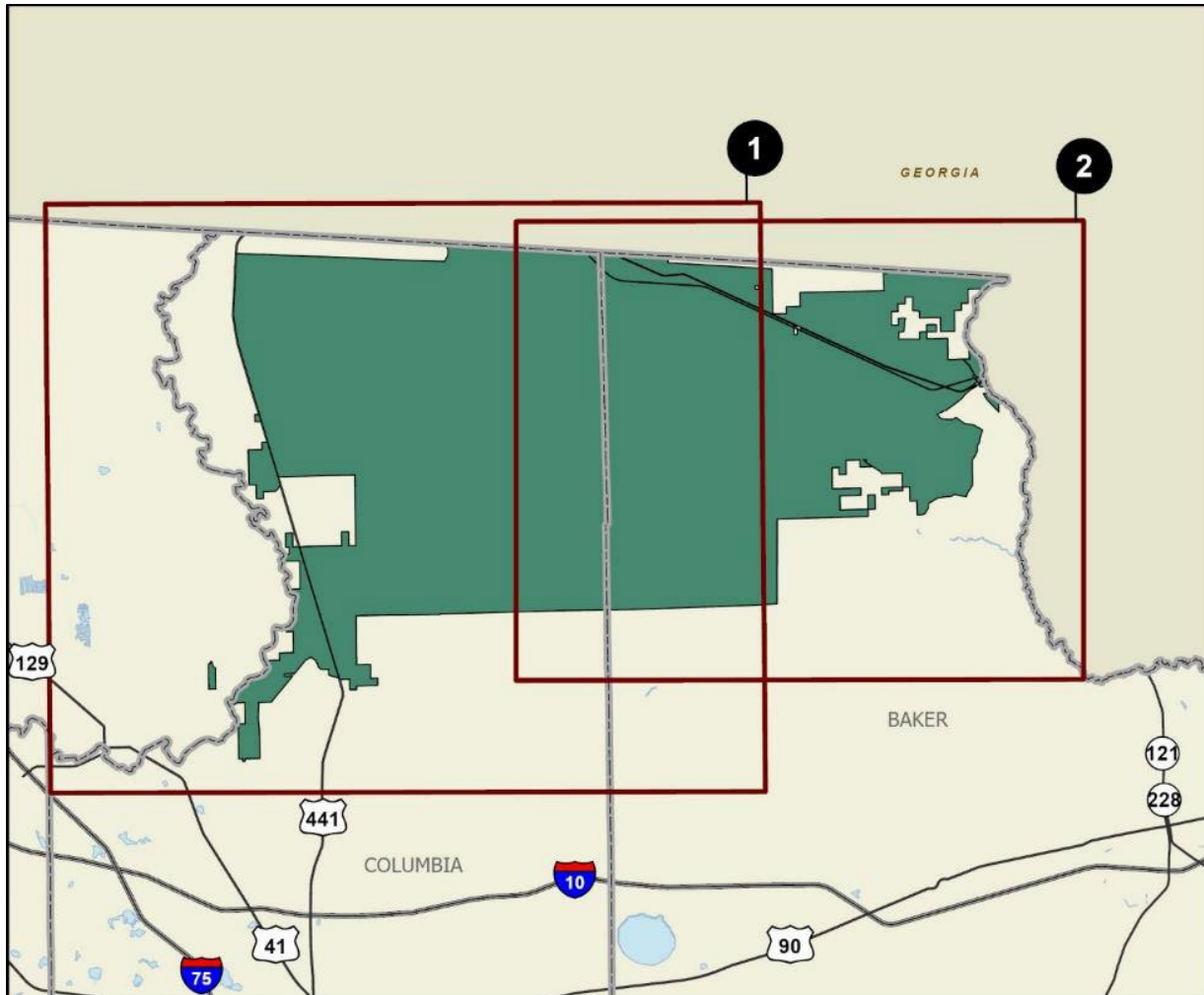
Source: Management Prospectus as originally submitted

Management Cost Summary

<u>FFS</u>	<u>Startup</u>	<u>Recurring</u>
Source of Funds	LATF	LATF
Salary	\$28,140	\$28,140
OPS	\$0	\$0
Expense	\$13,000	\$5,000
OCO	\$81,100	\$2,000
FCO	\$0	\$0
TOTAL	\$122,140	\$35,140

Source: Management Prospectus as originally submitted





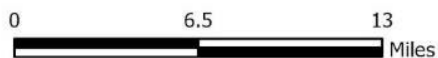
PINHOOK SWAMP: OVERVIEW

BAKER AND COLUMBIA COUNTIES

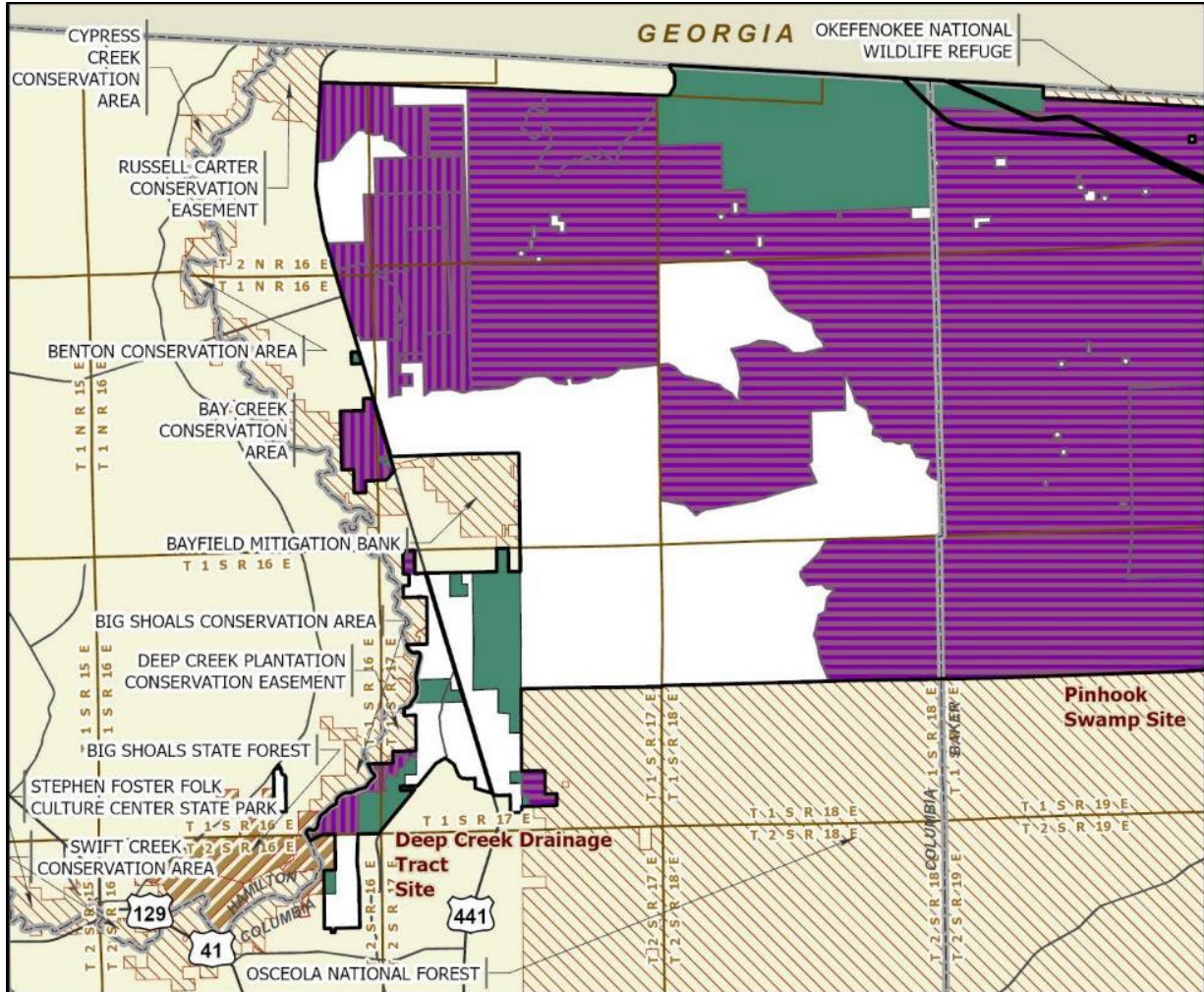
- Map 1 Deep Creek Drainage Tract Site
- Map 1 Pinhook Swamp Site
- Map 2 Pinhook Swamp Site



FEBRUARY 2021



Map 1: FNAI, February 2021



PINHOOK SWAMP: MAP 1

BAKER AND COLUMBIA COUNTIES

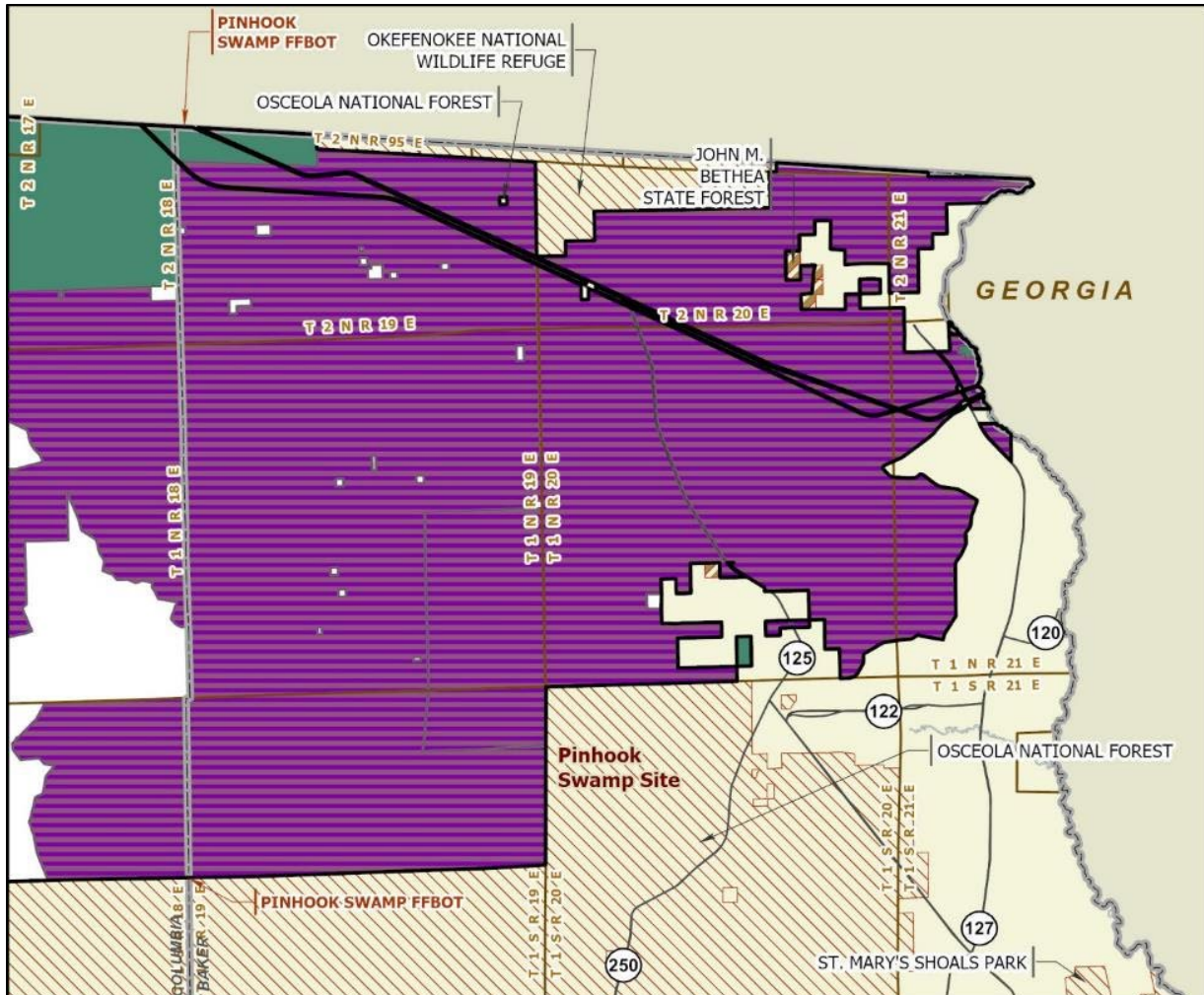
-  Florida Forever BOT Project Boundary
-  Acquired for Conservation (Fee Simple)
-  Acquired for Conservation (Less-Than-Fee)
-  Essential Parcel(s) Remaining
-  State Owned Conservation Lands
-  Other Conservation Lands



JANUARY 2021

Map 2: FNAI, January 2021

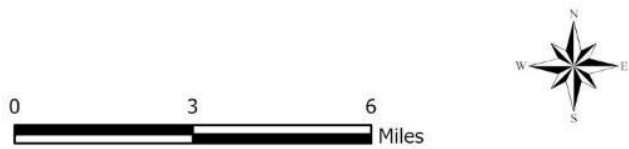




PINHOOK SWAMP: MAP 2

BAKER AND COLUMBIA COUNTIES

-  Florida Forever BOT Project Boundary
-  Acquired for Conservation (Fee Simple)
-  Essential Parcel(s) Remaining
-  State Owned Conservation Lands
-  Other Conservation Lands
-  Other Florida Forever BOT Projects



JANUARY 2020

Map 3: FNAI, January 2020