

San Felasco Conservation Corridor

Less-Than-Fee

Alachua

<i>Year Added to Priority List</i>	2003
<i>Project Acres</i>	376
<i>Acquired Acres</i>	0
<i>Cost of Acquired Acres</i>	\$0
<i>Remaining Project Acres</i>	376
<i>2020 Assessed Value of Remaining Acres</i>	\$918,828

Purpose for State Acquisition

The San Felasco Conservation Corridor project will facilitate the development of a greenway conservation corridor in northeast Alachua County and protect significant natural and cultural resources.

General Description

The San Felasco Conservation Corridor project consists of three separate tracts of land totaling approximately 379 acres. While these three parcels do not create a viable project, the importance of these tracts can be seen when they are combined with a larger Conservation Corridor project. The tracts proposed for this project include a narrow fringe of hardwood forest bordering (but not including) a shallow lake, a small parcel of hardwood forest along a blackwater stream bordered by development and a four-lane highway, and a pine plantation with a few isolated wetlands and a blackwater stream. The western tract (roughly 30 acres), the undeveloped Burnett Lake Subdivision property, consists principally of a narrow strip of land bordered on the northwest by a railroad and partially surrounding, but only very narrowly abutting, the north and west sides of Burnett Lake. About two-thirds of the tract supports a predominantly second-growth hardwood forest. The small (roughly 15 acre) central parcel lies between U.S. 441 on the south, a railroad on the north, Mol-Tech battery manufacturing plant on the west, and the small residential area of Hague on the east. The south flowing Cellon Creek flows through this parcel from state-owned IFAS property. The tract supports second-growth hardwood forest and other hardwoods, growing along the small floodplain and slopes of a blackwater stream. Though narrow and disturbed, this tract may have some, though certainly limited, value as a wildlife corridor.

FNAI Element Occurrence Summary

FNAI Elements	Score
---------------	-------

no rare species are associated with the project

Public Use

The San Felasco Conservation Corridor is proposed for less-than-fee acquisition and does not provide for public access. However, upon coordination with the landowner, limited fishing and nature appreciation could possibly be allowed on the project. As a part of a larger multiple agency cooperative effort to protect forests and wetlands connecting San Felasco Hammock Preserve State Park with the Gainesville Wellfield and the Santa Fe River, these properties would also lend support to any trail that might eventually be made possible through other acquisitions.

Acquisition Planning

2003

The project consists of multiple parcels and multiple owners. The project has been proposed for less-than-fee acquisition. On June 6, 2003, the ARC added this project to the A list of Florida Forever projects.

2011

On December 9, 2011, the ARC placed this project in the Less-Than-Fee category of Florida Forever projects.

Coordination

The San Felasco Land Trust has created a large 25,000-acre Corridor project and brought together DEP, SRWMD, FCT, and the Alachua Forever land acquisition program to cooperatively acquire the Conservation Corridor. There are no adjacent land acquisition projects begun under the CARL, P2000 or Florida Forever programs. The San Felasco Hammock Preserve State Park and the TTC/Gainesville Wellfield Conservation Easement are adjacent to the larger 25,000-acre Corridor project.

Management Policy Statement

As a less-than-fee acquisition, the San Felasco Conservation Corridor would be managed for conservation purposes by the landowner as outlined in the conservation easement.

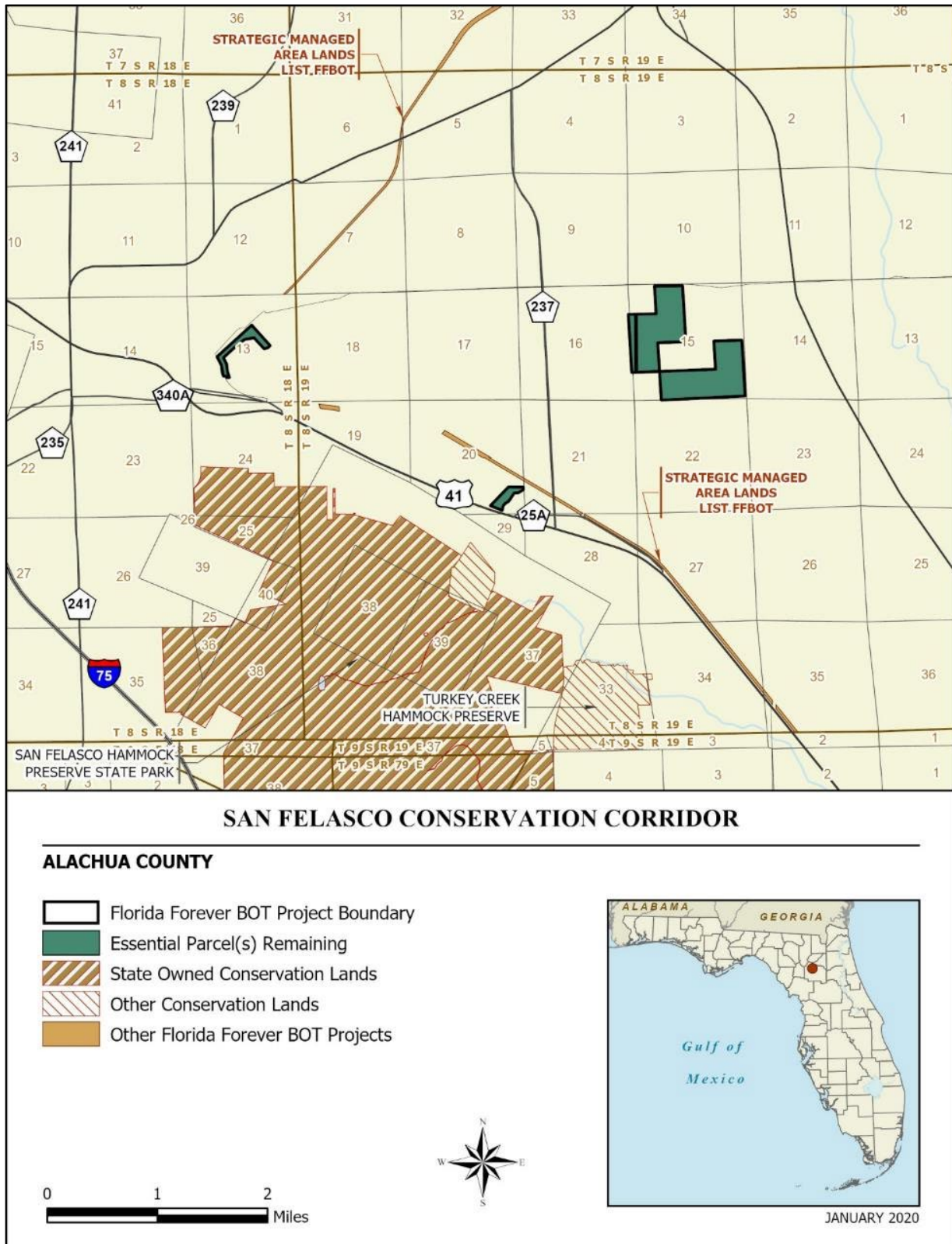
Manager(s)

If acquired as less-than-fee, management responsibility of the San Felasco Conservation Corridor would remain with the landowner. Periodic monitoring of the site's management to confirm continued compliance with the conditions of the conservation easement would be coordinated by OES.

Management Prospectus

OES will periodically monitor the conservation easement, while the management will be conducted by the property owner.





Map 1: FNAI, January 2020