

South Goethe

Critical Natural Lands

Levy, Marion

<i>Year Added to Priority List</i>	2006
<i>Project Acres</i>	11,706
<i>Acquired Acres</i>	350
<i>Cost of Acquired Acres</i>	\$0
<i>Remaining Project Acres</i>	11,355
<i>2020 Assessed Value of Remaining Acres</i>	\$29,848,426

Purpose for State Acquisition

The South Goethe project will provide a corridor from the Goethe State Forest to the Marjorie Harris Carr Cross Florida Greenway State Recreation and Conservation Area along the Withlacoochee River and forms a linkage to the Etoniah Cross Florida Greenway Florida Forever project. One of the primary concepts of this project is to protect the Withlacoochee River's watershed by connecting Goethe State Forest with the greenway. The project will also provide a significant buffer along the southern boundary of the forest while enhancing the forest and its associated habitat through restoration.

General Description

The South Goethe Florida Forever project (SGFFP) includes two ownerships to be considered for fee-simple acquisition and principally separated by highway CR 40. The Robinson tract (north of CR 40) is a single-owner tract of 5,722 acres contiguous with the southern boundary of Goethe State Forest in southeastern Levy County. The 3.6-mile shared boundary runs along an unpaved woods road for much of its length. The Marino tract is south of the Robinson tract, mostly on the south side of highway CR 40; however, the tract extends northward across CR 40 and shares a common boundary of 0.25 mile with the Robinson tract. At its closest point, the Robinson tract approaches to within 0.46 mile of the Marjorie Harris Carr Cross Florida Greenway State Recreation and Conservation Area, which lies along Lake Rousseau (impounded in the Withlacoochee River) to the south.

FNAI Element Occurrence Summary

FNAI Elements	Score
Gopher tortoise	G3/S3
Florida black bear	G5T4/S4
<i>longspurred mint</i>	G2/S2
Gopher frog	G2G3/S3
Bald eagle	G5/S3

Public Use

Management programs would be oriented towards conservation and protection of wildlife species, and to carefully control public uses. The primary land management goals for the tract are to restore, maintain and protect in perpetuity all native ecosystems, to integrate compatible human use, and to ensure long-term viability of populations and species considered rare.

The FFS will promote recreation and environmental education in the natural environment. It is anticipated that interpretative and user recreation facilities will be developed and the use of low impact, rustic facilities will be stressed in the more natural or restored areas of the tract. In the more heavily impacted areas of the tract, FFS will explore the possibility of an off-highway vehicle trail system. While portions of these impacted areas will be restored to a natural state, other portions could potentially provide a network of trails for off-highway enthusiasts.

Acquisition Planning

2006

On December 8, 2006, the ARC added the South Goethe Forest Addition to Group A of the Florida Forever priority list. This full-fee project was sponsored by FFS. The project has 6,152 acres and a tax-assessed value of \$1,157,483.

2007

On June 15, 2007, the ARC approved a fee-simple, 5,553-acre addition (aka Cold Springs Tract Addition) to the project boundary. The proposal was sponsored by the Rainbow River Conservation, Inc., consisted of 33 parcels, a single ownership, Throgmartin-Henke Development LLP, and a taxable value of \$10,416,820. FFS is the recommended manager. The parcels have been designated essential.

2011

On December 9, 2011, the ARC placed this project in the Critical Natural Lands category of Florida Forever projects.

Coordination

This property is proposed as fee simple acquisition. No acquisition partnerships have been proposed at this time.



Management Policy Statement

The primary land management goals for the management of the tract are to restore, maintain and protect in perpetuity all native ecosystems; to integrate compatible human use; and to ensure long-term viability of populations and species considered rare. This ecosystem and multiple use approach will guide the management activities on this project.

Manager(s)

The property is proposed to be managed by FFS.

Management Prospectus

Qualifications for state designation

The project's size and diversity make it desirable for use and management as a state forest. Most of the acreage of this project consists of planted mesic and wet flatwoods, and sandhills. With thinning, introduction of prescribed fire, and sustainable forestry management practices, the project could be quickly transformed from management for silvicultural values to an area managed for its ecological and recreational benefits.

Conditions affecting intensity of management

Much of the project's flatwoods and sandhill areas have been disturbed by silvicultural operations and will require restoration efforts. Timber thinning will provide revenue for restoration activities as well as promote the re-generation of native ground covers and canopy. Development of facilities, as on all conservation lands, would be kept to the minimum level necessary to assure a high-quality recreational experience, and any such development would be confined to areas of previous disturbance.

Protection and restoration of sensitive wetlands on this project will be a priority. Restoration efforts will focus on introducing prescribed fire and thinning dense pine stands, and on restoring native groundcovers. The level of management intensity and related management costs is expected to initially be high to obtain the necessary information and resources to restore and manage this system as a State Forest. Once this is done, long-term management costs are expected to be light to moderate to maintain this area as a State Forest.

Management implementation, Public access, Site security and Protection of infrastructure

The initial and intermediate management efforts will concentrate on resource inventory, restoring and reforesting areas where harvesting has occurred, hydrological restoration, providing site security, and assessing public and fire management access. Inventories of the site's natural resources, threatened and endangered flora and fauna, will be conducted to provide a basis for the formulation of a management plan. Because of the numerous roads throughout the property, a plan will be needed to identify which ones will be needed for vehicular access by the public and which ones will be needed for administrative use, and which are unnecessary for management or access and should be closed. Steps will be taken to ensure the public is provided appropriate access. Burning goals for this project will be to establish an all season prescribed burning program on all of the fire dependent community types. Whenever possible,



existing roads, black lines, foam lines and natural breaks will be used to contain, and control prescribed and natural fires. Timber management activities will primarily consist of restoration harvests and improvement cuts aimed at restoring and perpetuating native ground covers. Stands will not have a targeted rotation age but will be managed to maintain a broad diversity of age classes ranging from young stands to areas with old growth characteristics. This will provide habitat for the full spectrum of species that would be found in the natural environment and enhance and maintain biodiversity. FFS will promote recreation and environmental education in the natural environment. It is anticipated that interpretative and user recreation facilities will be developed and the use of low impact, rustic facilities will be stressed in the more natural or restored areas of the tract. In the more heavily impacted areas of the tract DOF will explore the possibility of an off-highway vehicle trail system. While portions of these impacted areas will be restored to a natural state, other portions could potentially provide a network of trails for off-highway enthusiasts. There is also potential for obtaining funding for both acquiring the parcel as well as the implementing the trail system. Unnecessary roads, fire lines and hydrological disturbances will be abandoned and/or restored to the greatest extent practical.

Revenue-generating potential

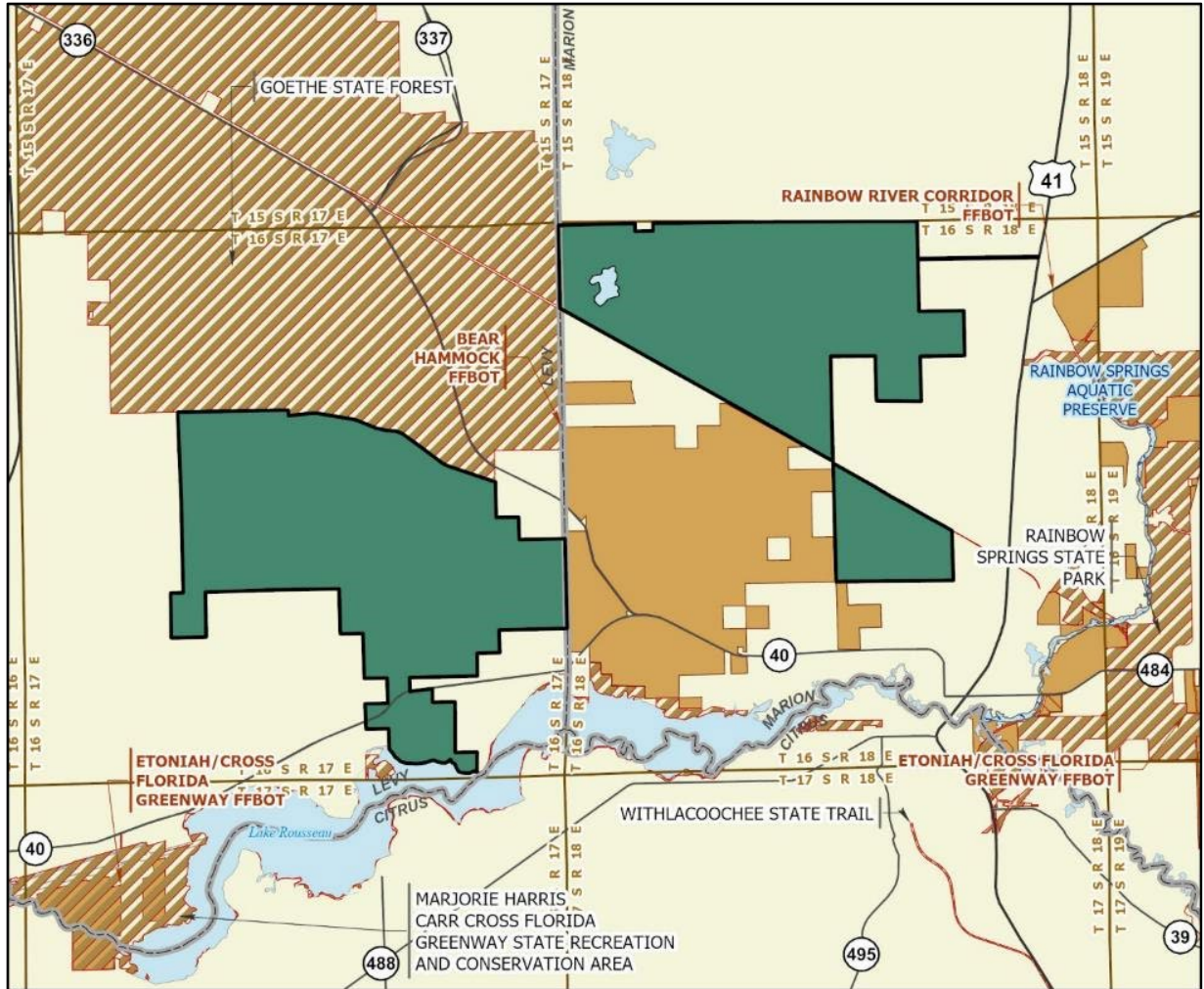
Timber sales will be conducted as needed to improve or maintain desirable ecosystem conditions. These sales will primarily take place in planted pine stands and will provide a variable source of revenue dependent upon a variety of factors. Due to the existing condition and volume of the timber resources on the property, revenue-generating potential of this project is expected to be moderate to high. Some revenues might be realized in the future from recreational user fees and ecotourism activities if such projects could be economically developed. It is anticipated that management funding will come from the CARL trust fund. Florida Forever capital project expenditures are going to be needed on this parcel for prescribed fire, vegetative and hydrologic restoration, improved public access/use, and facilities, both public and administrative. It is anticipated that some of the existing roads and trails may be used as multi-use trails for hiking, horseback riding and biking. This Management Prospectus is not intended to be an application for capital project funding; however, as more information is gathered, and an analysis of the site is completed, FFS intends to apply for capital project funds.

Management Cost Summary

<u>FFS</u>	<u>Interim cost</u>
Source of Funds	CARL (or successor)
Salary (2 FTE)	\$72,104
Expense	\$263,000
OCO	\$593,720
TOTAL	\$928,824

Source: Management Prospectus as originally submitted

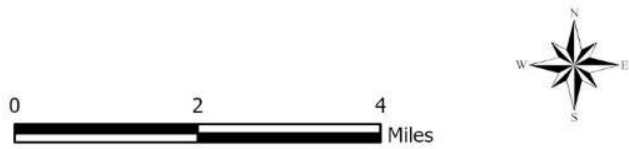




SOUTH GOETHE

LEVY AND MARION COUNTIES

-  Florida Forever BOT Project Boundary
-  Essential Parcel(s) Remaining
-  State Owned Conservation Lands
-  Other Conservation Lands
-  Other Florida Forever BOT Projects
-  State Aquatic Preserve



JANUARY 2020

Map 1: FNAI, January 2020