

St. Joe Timberland

Climate Change Lands

Bay, Franklin, Gadsden, Gulf, Jefferson, Leon, Liberty, Taylor, Wakulla, Walton, Washington

<i>Year Added to Priority List</i>	2000
<i>Project Acres</i>	160,945
<i>Acquired Acres</i>	104,335
<i>Cost of Acquired Acres</i>	\$76,574,595
<i>Remaining Project Acres</i>	56,611
<i>2020 Assessed Value of Remaining Acres</i>	\$105,200,260

Purpose for State Acquisition

The St. Joe Timberland project will consolidate the St. Joe Company ownerships already included in other projects, thus helping to preserve large undeveloped tracts of land for native plants and animals in north Florida. The project will provide the public with an opportunity to experience and recreate in large natural areas in the Florida Panhandle. This project may also help complete the Florida National Scenic Trail, a statewide non-motorized trail that crosses several Florida Forever project sites.

General Description

The St. Joe Timberland project includes the St. Joe Company ownerships in the following projects: Apalachicola River (Sweetwater Creek 7,040 acres, Gadsden Glades 360 acres, and Aspalaga Landing 600 acres sites); Brevard Coastal Scrub Ecosystem (Tico site 1,780 acres); Dickerson Bay/Bald Point (Bald Point site 3,840 acres); Florida's First Magnitude Springs (River Sink 40 acres and St. Marks 700 acres springs sites); Lake Powell 600 acres; St. Joseph Bay Buffer 250 acres; Sand Mountain 1,680 acres; Tate's Hell/Carrabelle Tract 16,000 acres; Wacissa/Aucilla River Sinks 19,840 acres; and Wakulla Springs Protection Zone 2,240 acres. The sites lie in the Panhandle from Bay and Washington Counties to Taylor County, except for the Tico site in Brevard County. They include samples of almost all the natural communities of north and central Florida, from scrub to swamps and springs.

FNAI Element Occurrence Summary

FNAI Elements	Score
<i>Florida torreyi</i>	G1/S1
Gopher tortoise	G3/S3
Swallow-tailed kite	G5/S2
Florida black bear	G5T4/S4
<i>Apalachicola rosemary</i>	G1/S1
<i>Chapman's rhododendron</i>	G1/S1
<i>Gholson's blazing star</i>	G1/S1
<i>pinewoods aster</i>	G1/S1
<i>telephus spurge</i>	G1/S1
Big Blue Spring cave crayfish	G1/S1
Woodville karst cave crayfish	G1/S1
<i>Curtiss' loosestrife</i>	G1/S2

Public Use

The sites are designated for various public uses.

Acquisition Planning

1999

On December 9, 1999, the LAMAC approved the creation of the St. Joe Timberland project and added it to the CARL Priority list. The project was sponsored by the St. Joe Company, DEP's DSL, and TNC, and initially consisted of individual tracts owned by St. Joe Company within existing projects. Other sites will be proposed for addition to the project. Approval was given to add an additional 1,318 acres (18 to the Wacissa/Aucilla River Sinks project and approximately 1,300 to the Apalachicola River Project – Lake Wimico site) to the project boundary as essential parcels. The initial project consisted of approximately 56,218 acres. The NFWFMD has acquired most of the Sand Mountain site.

2000

On August 22, 2000, the ARC approved a fee-simple, 12,360-acre addition, known as Lake Wimico site in Gulf County, to the project boundary. It was sponsored by FWC, consisted of one owner, the St. Joe Company.

Also, on August 22, 2000, the ARC approved a fee-simple, 1,592-acre addition, known as Snipe Island, to the project boundary. It was sponsored by TNC, consisted of one owner, the St. Joe Company.

2001

On July 12, 2001, the ARC approved a fee simple, 22,260-acre addition to the project boundary. It was sponsored by FWC, consisted of one owner, the St. Joe Company. About 19,445 acres are in Jefferson County, the remainder in Taylor County. Also, at that meeting, the ARC approved a fee simple, 2,560-acre addition, to the St. Joseph Bay buffers project boundary. It was sponsored by FWC, consisted of one owner, the St. Joe Company. The property is in Gulf County.



2002

On April 25, 2002, the ARC approved a fee simple, 2,194-acre addition, known as the Tiger Hammock Conservation Area, to the project boundary. It was sponsored by Dr. John Epler and consisted of one owner, the St. Joe Company.

Also, the ARC approved a fee simple, 1,656-acre addition, known as Crooked Creek (1,365 acres, Gadsden/Liberty Counties) and Short Creek (291 acres, Liberty County), to the project boundary. It was sponsored by TNC, consisted of one owner, the St. Joe Company.

2003

On June 6, 2003, the ARC approved a fee-simple, 49,565-acre addition, known as St. Vincent Sound to Lake Wimico, to the project boundary in Gulf and Franklin counties. It was sponsored by TNC, consisted of one owner, the St. Joe Company.

2004

On June 4, 2004, the ARC approved a fee simple, 10,444-acre addition in Jefferson County, known as the Flint Rock tract, to the project boundary. It was sponsored by TNC and consisted of one owner, the St. Joe Company.

2008

In January 2008, TNC acquired 10,905 acres known as Flint Rock.

2010

On April 6, 2010, FWC acquired from TNC approximately 2,836 acres of the Flint Rock site for \$5,246,371.

2011

On December 9, 2011, ARC voted to place this project in the Climate Change Lands category of Florida Forever.

2012

On April 20, 2012, ARC approved moving the Flint Rock tract to the Wacissa/Aucilla River Sinks Florida Forever project, as this was no longer in St. Joe ownership.

2016

In October 2016, ARC transferred 2,456 acres of land from the Franklin County sites of this project to the Dickerson Bay/Bald Point project, as part of the consideration for the Bluffs of St. Teresa Florida Forever proposal.

2017

On April 21, 2017, ARC voted to add 879.5 acres of St. Joe land in two parcels in south Leon County to the project, with a tax assessed value of \$186,620. This addition was proposed by the DRP. DRP will manage the western parcel as part of Edward Ball Wakulla Springs State Park and FFS will manage the eastern parcel as part of Wakulla State Forest.



On August 18, 2017, ARC voted to add an 18-acre inholding in Franklin County within the Box-R WMA, surrounded by BOT-owned managed conservation lands, to the project. The addition had a tax assessed value of \$83,800. This fee-simple boundary amendment was submitted by FWC.

In 2017, 10,445 acres in this project were acquired using Florida Forever program funding.

2019

On October 18, 2019, ARC approved the addition of 564 acres in Franklin County to the St. Joe Timberland Florida Forever project. If acquired, it would be managed by FWC as part of the Apalachicola River WEA.

2020

September 2020, two parcels containing 578.23 acres were acquired at a cost of \$720,000, of which \$200,000 was provided by FWFF. The land will be managed by FWC as part of the Apalachicola River WEA.

The 20,146-acre Lake Wimico addition was acquired via donation from TNC who acquired the property with grant funding from the NFWF. Approximately 13,945 acres was added to the Apalachicola River WEA, and the remaining acres (6,194) was added to Box-R WMA which are managed by FWC.

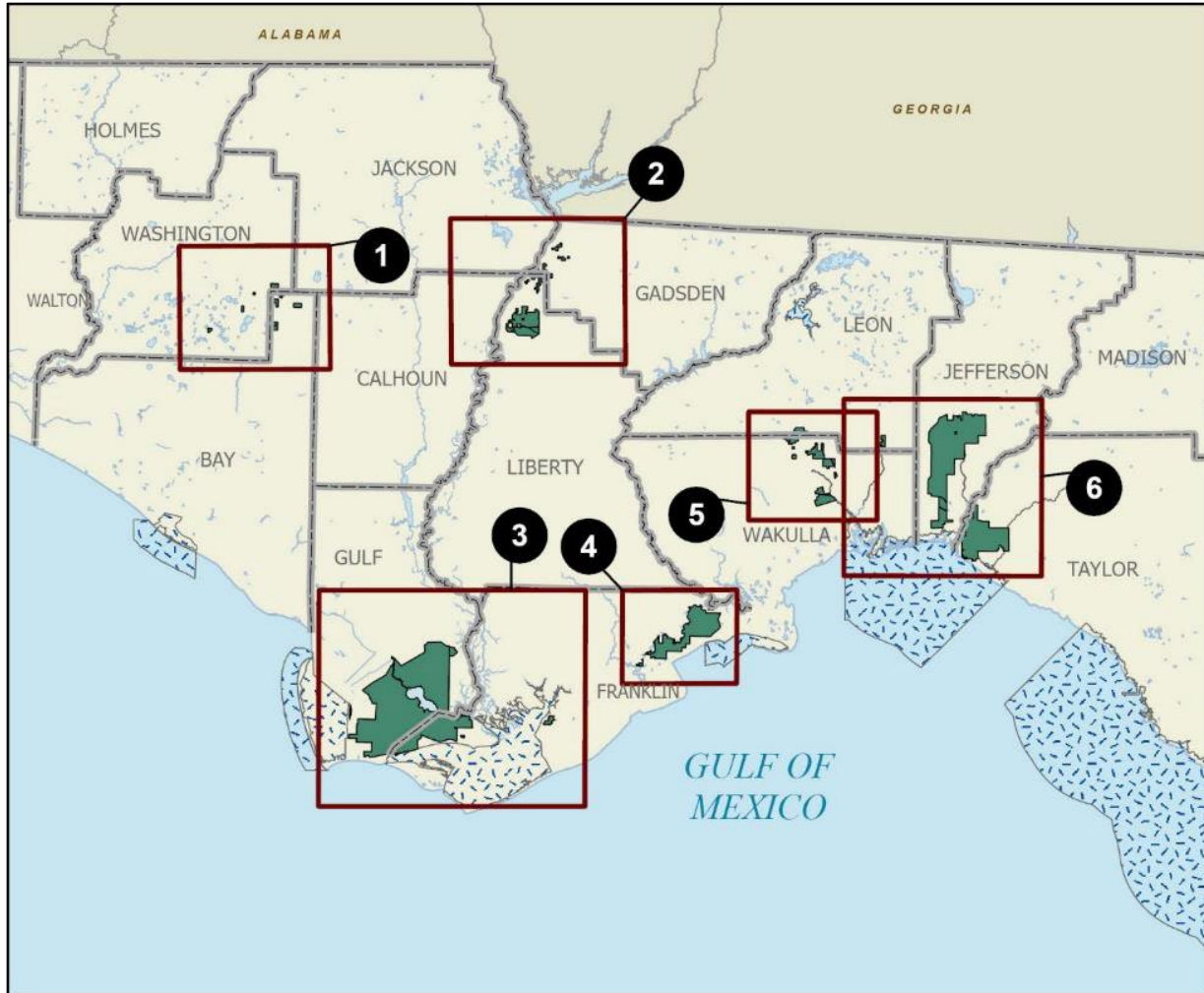
2021

On December 10, 2021, the ARC approved an addition of 370 acres in Franklin County to the project boundary.

Coordination

TNC has been an acquisition intermediary for this project.

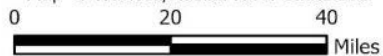




ST. JOE TIMBERLAND: OVERVIEW

BAY, FRANKLIN, GADSDEN, GULF, JEFFERSON, LEON, LIBERTY, TAYLOR, WAKULLA, AND WASHINGTON COUNTIES

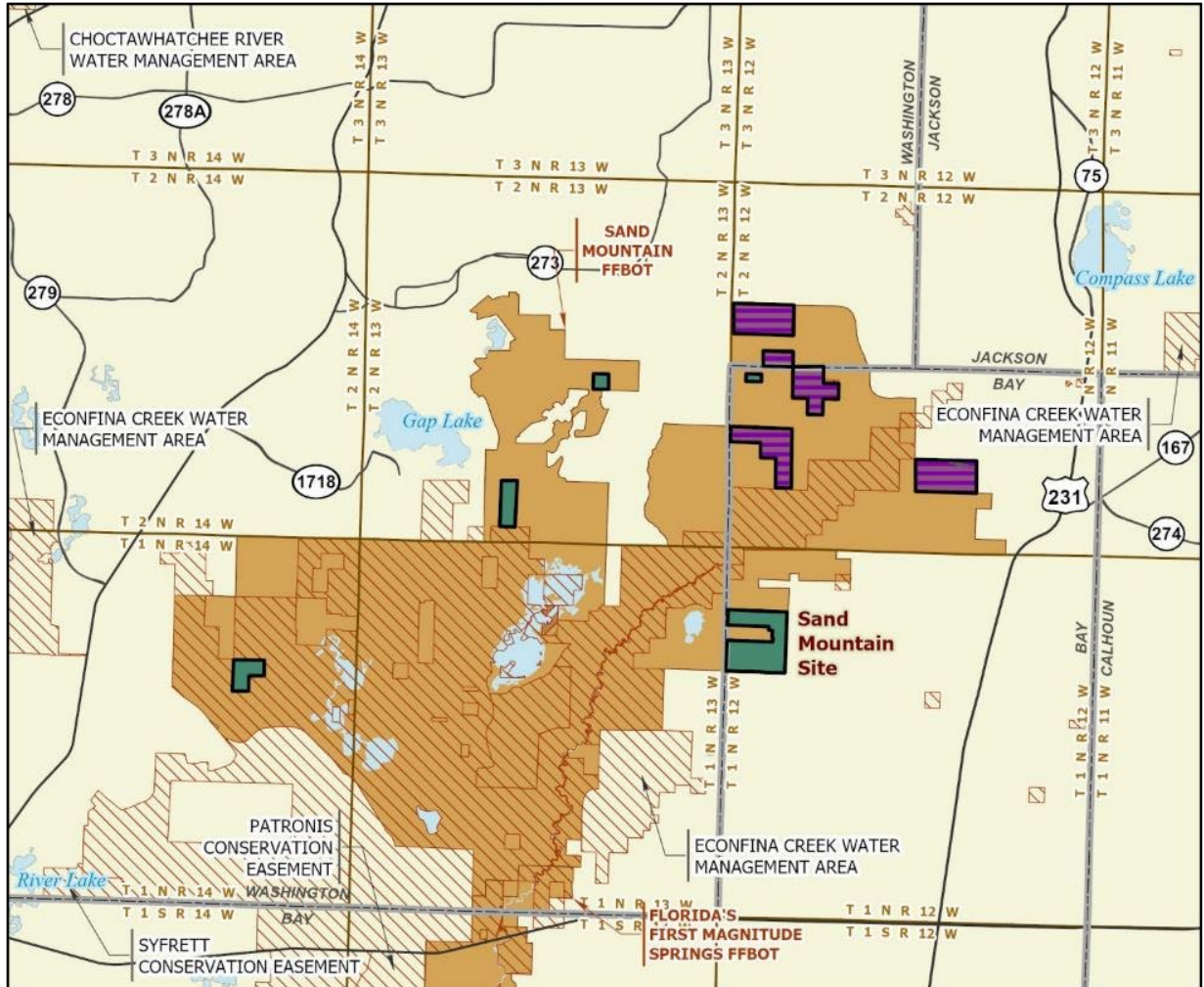
- Map 1 Sand Mountain Site
- Map 2 Apalachicola River - Aspalaga Landing Site
- Map 2 Apalachicola River - Crooked/Short Creek Site
- Map 2 Apalachicola River - Gadsden Glades Site
- Map 2 Apalachicola River - Sweetwater Creek Site
- Map 3 Holt Trustee Tract Site
- Map 3 Lake Wimico Site
- Map 3 St. Joseph Bay Buffer Site
- Map 3 St. Vincent Sound-to-Lake Wimico Ecosystem Site
- Map 4 Tates Hell/Carrabelle Tract Site
- Map 5 River Sink Spring Site
- Map 5 Wakulla Springs Protection Zone Site
- Map 6 St. Marks Springs Site
- Map 6 Wacissa/Aucilla River Sinks Site



FEBRUARY 2021

Map 1: FNAI, February 2021





ST. JOE TIMBERLAND: MAP 1

BAY AND WASHINGTON COUNTIES

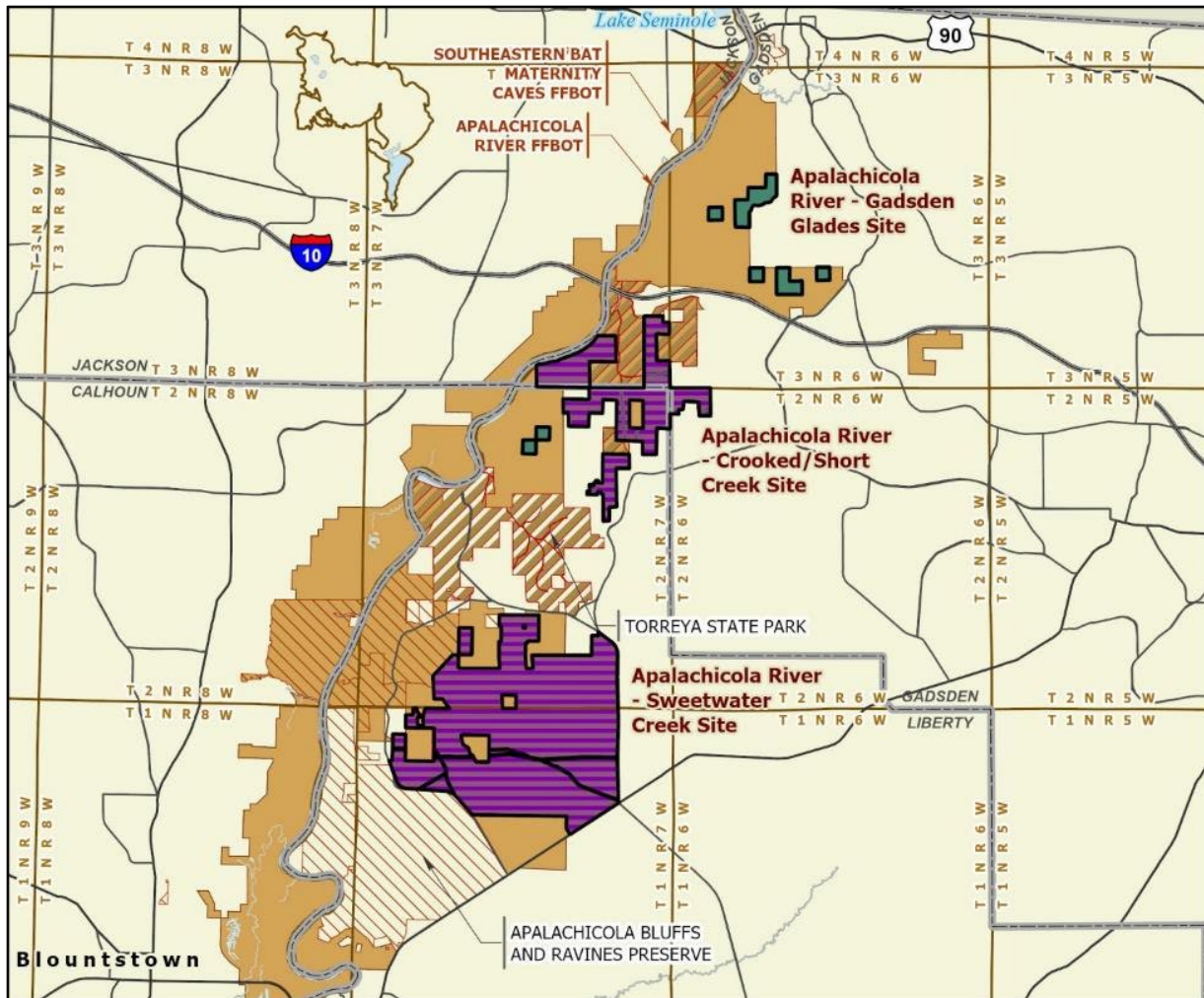
-  Florida Forever BOT Project Boundary
-  Acquired for Conservation (Fee Simple)
-  Essential Parcel(s) Remaining
-  State Owned Conservation Lands
-  Other Conservation Lands
-  Other Florida Forever BOT Projects



JANUARY 2020

Map 2: FNAI, January 2020





ST. JOE TIMBERLAND: MAP 2

GADSDEN AND LIBERTY COUNTIES

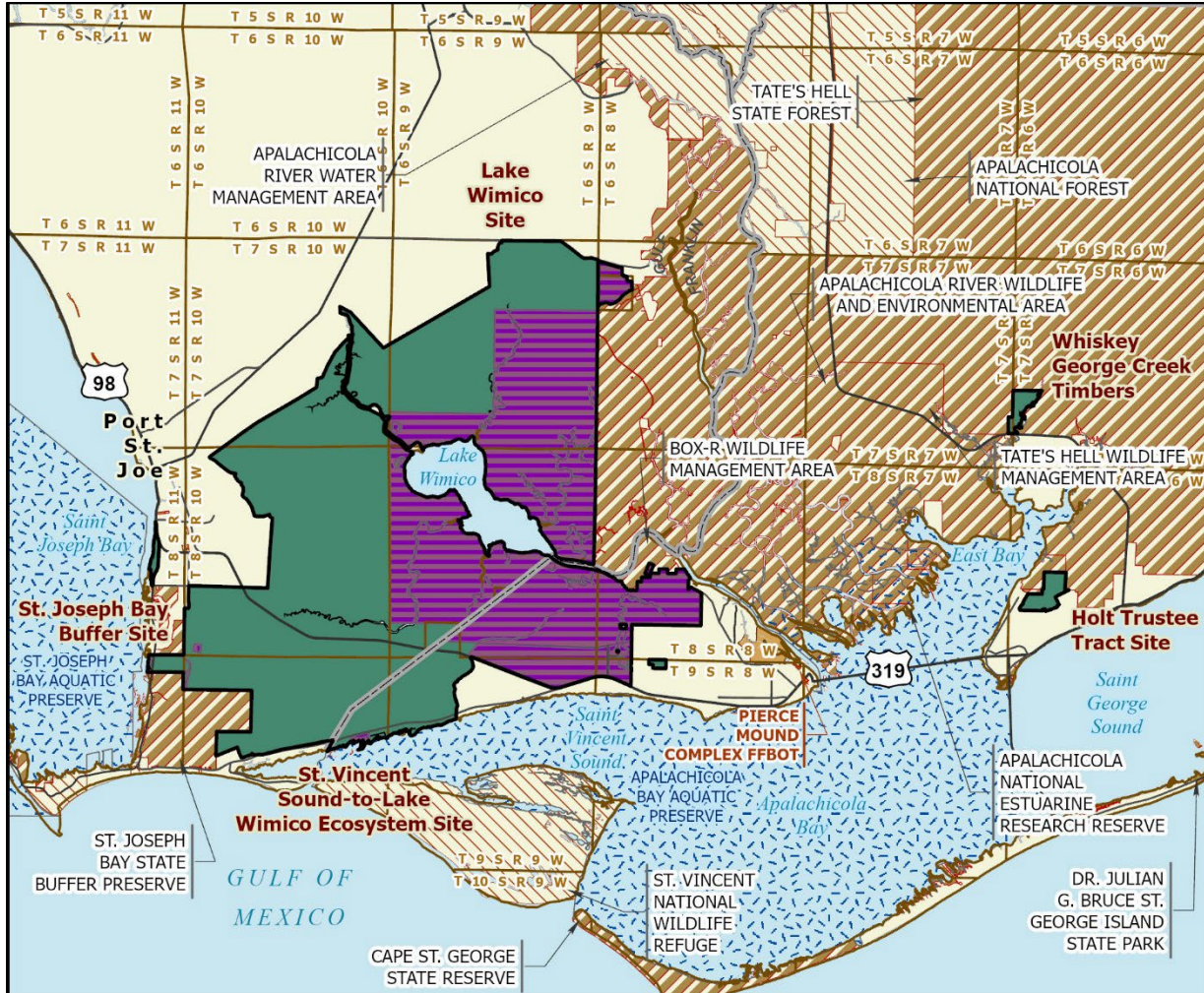
-  Florida Forever BOT Project Boundary
-  Acquired for Conservation (Fee Simple)
-  Essential Parcel(s) Remaining
-  State Owned Conservation Lands
-  Other Conservation Lands
-  Other Florida Forever BOT Projects



JANUARY 2020



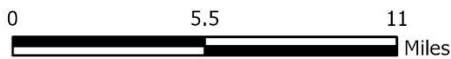
Map 3: FNAI, January 2020



ST. JOE TIMBERLAND: MAP 3

FRANKLIN AND GULF COUNTIES

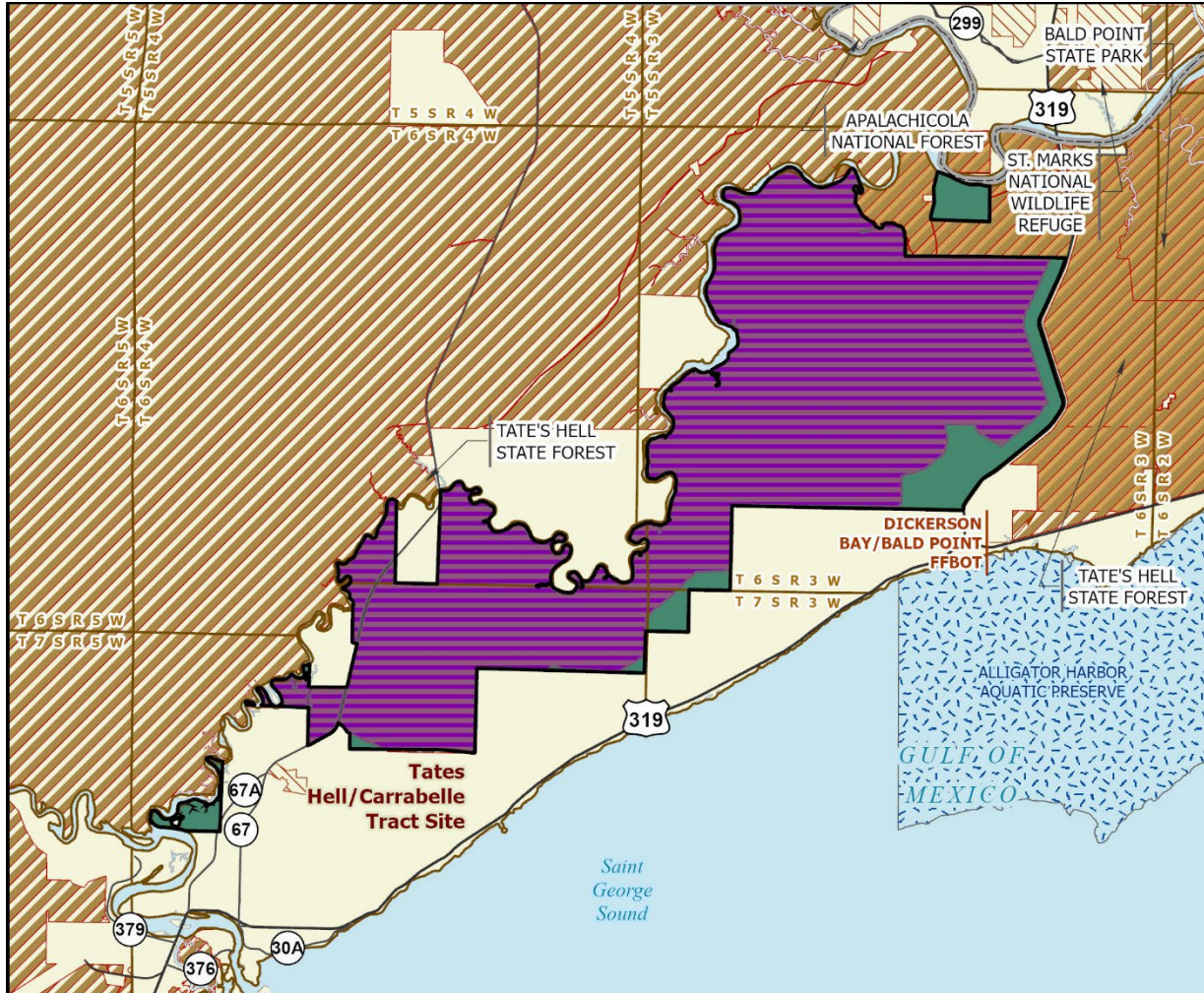
-  Florida Forever BOT Project Boundary
-  Acquired for Conservation (Fee Simple)
-  Acquired for Conservation (Less-Than-Fee)
-  Essential Parcel(s) Remaining
-  State Owned Conservation Lands
-  Other Conservation Lands
-  Other Florida Forever BOT Projects
-  State Aquatic Preserve



FEBRUARY 2022

Map 4: FNAI, February 2022





ST. JOE TIMBERLAND: MAP 4

FRANKLIN COUNTY

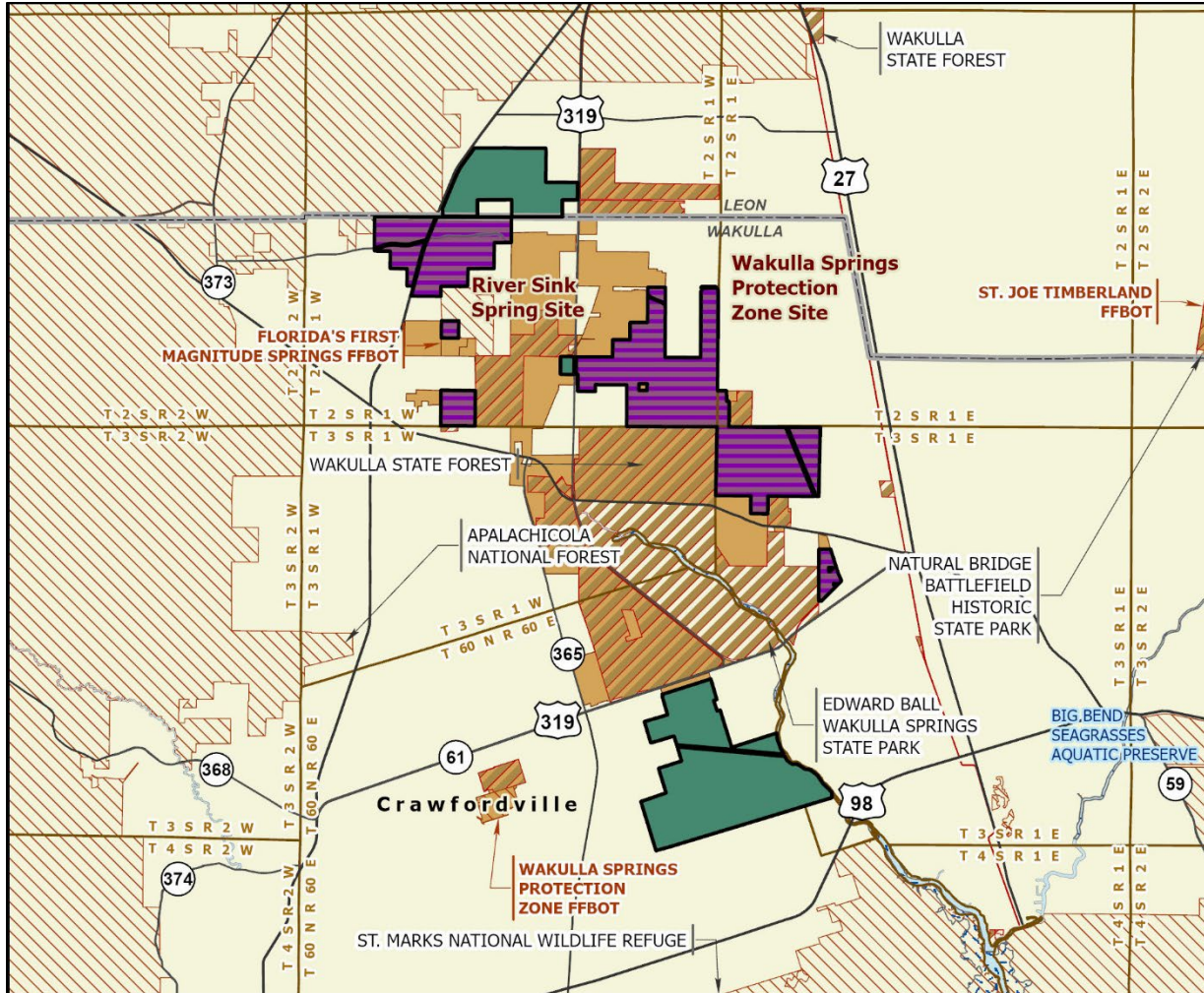
-  Florida Forever BOT Project Boundary
-  Acquired for Conservation (Fee Simple)
-  Essential Parcel(s) Remaining
-  State Owned Conservation Lands
-  Other Conservation Lands
-  Other Florida Forever BOT Projects
-  State Aquatic Preserve



FEBRUARY 2022

Map 5: FNAI, February 2022

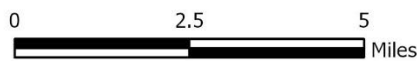




ST. JOE TIMBERLAND: MAP 5

WAKULLA COUNTY

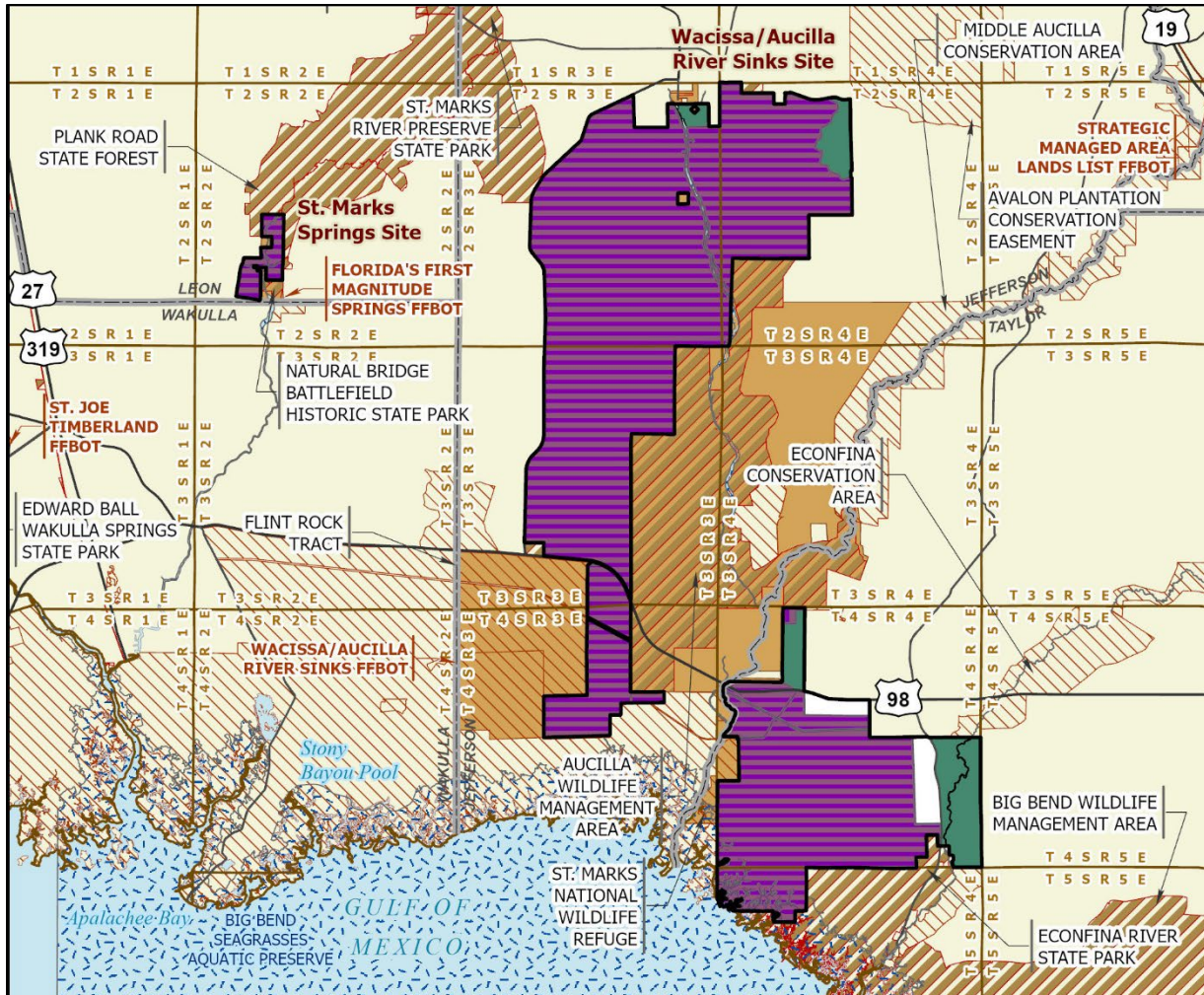
-  Florida Forever BOT Project Boundary
-  Acquired for Conservation (Fee Simple)
-  Essential Parcel(s) Remaining
-  State Owned Conservation Lands
-  Other Conservation Lands
-  Other Florida Forever BOT Projects
-  State Aquatic Preserve



FEBRUARY 2022

Map 6: FNAI, February 2022

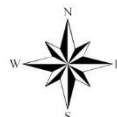
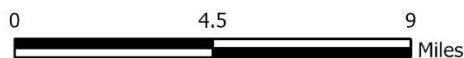




ST. JOE TIMBERLAND: MAP 6

JEFFERSON, LEON, AND TAYLOR COUNTIES

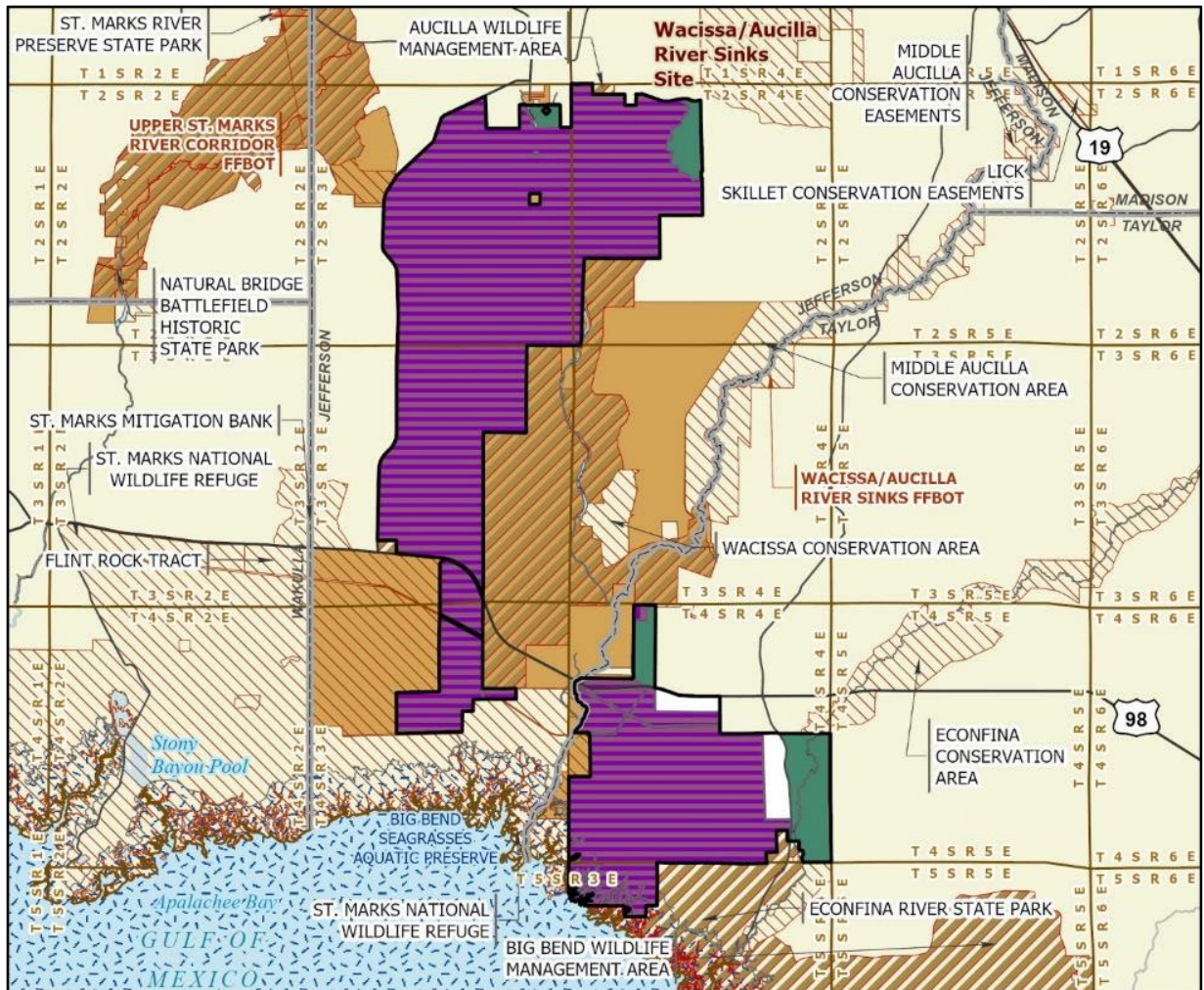
-  Florida Forever BOT Project Boundary
-  Acquired for Conservation (Fee Simple)
-  Acquired for Conservation (Less-Than-Fee)
-  Essential Parcel(s) Remaining
-  State Owned Conservation Lands
-  Other Conservation Lands
-  Other Florida Forever BOT Projects
-  State Aquatic Preserve



FEBRUARY 2022

Map 7: FNAI, February 2022

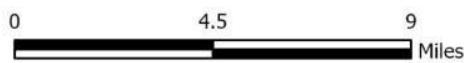




ST. JOE TIMBERLAND: MAP 7

JEFFERSON AND TAYLOR COUNTIES

-  Florida Forever BOT Project Boundary
-  Acquired for Conservation (Fee Simple)
-  Acquired for Conservation (Less-Than-Fee)
-  Essential Parcel(s) Remaining
-  State Owned Conservation Lands
-  Other Conservation Lands
-  Other Florida Forever BOT Projects
-  State Aquatic Preserve



JANUARY 2020

Map 8: FNAI, January 2020

