



**Florida Department of Environmental Protection
Office of Operations
Land and Recreation Grants Program**

Florida Communities Trust
Military Base Buffering Geographic Data

Overview Map of Major Military Installation Locations

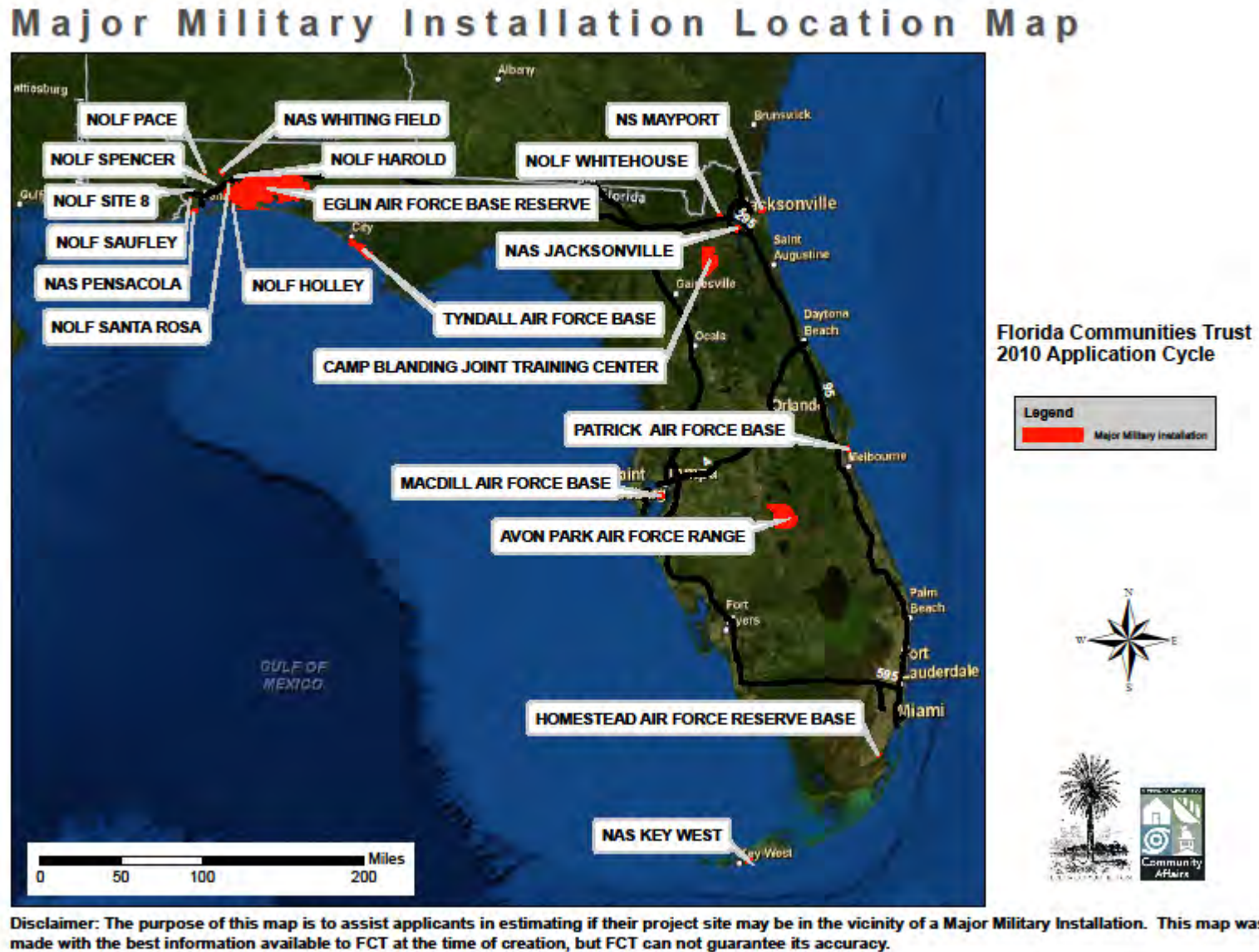
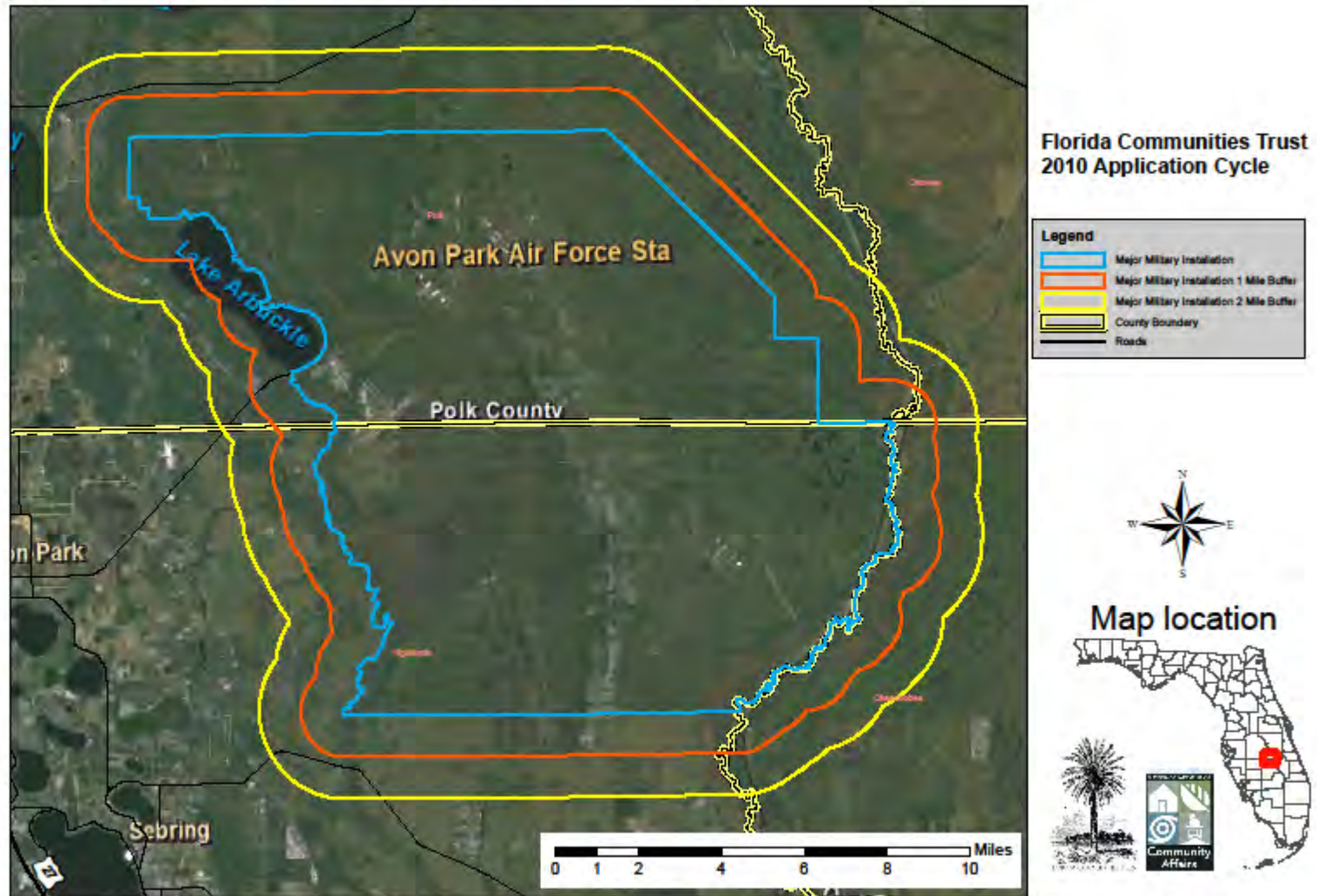


Figure 1

Avon Park Air Force Range

Avon Park Air Force Range

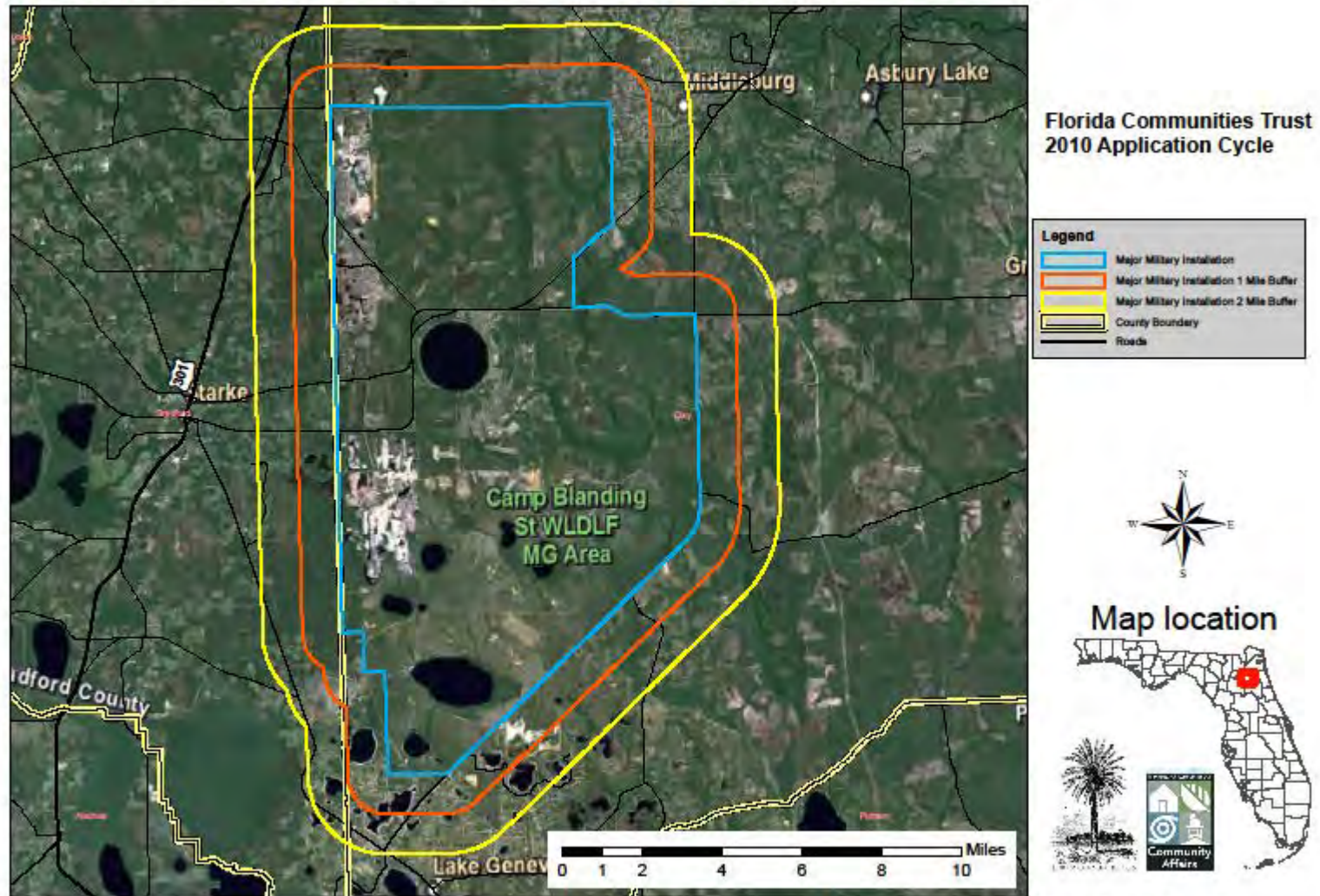


Disclaimer: The purpose of this map is to assist applicants in estimating if their project site may be in the vicinity of a Major Military Installation. This map was made with the best information available to FCT at the time of creation, but FCT can not guarantee its accuracy.

Figure 2

Camp Blanding Joint Training Center

Camp Blanding Joint Training Center

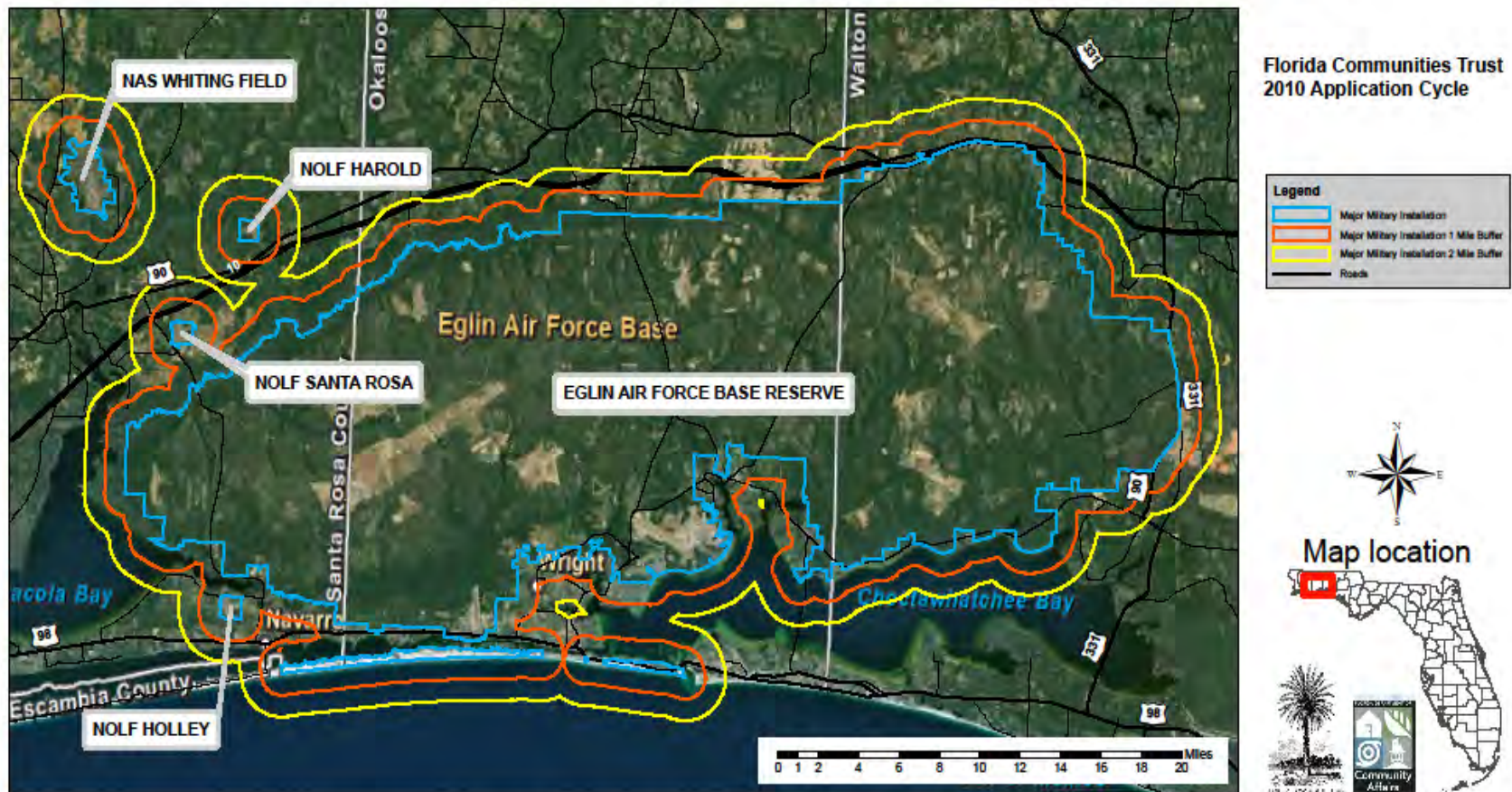


Disclaimer: The purpose of this map is to assist applicants in estimating if their project site may be in the vicinity of a Major Military Installation. This map was made with the best information available to FCT at the time of creation, but FCT can not guarantee its accuracy.

Figure 3

Eglin Air Force Base Reserve,
Naval Air Station Whiting Field, Outlying Fields Harold, Holley, and Santa Rosa

Eglin Air Force Base Reserve, Naval Air Station Whiting Field, Outlying Fields Harold, Holley, and Santa Rosa

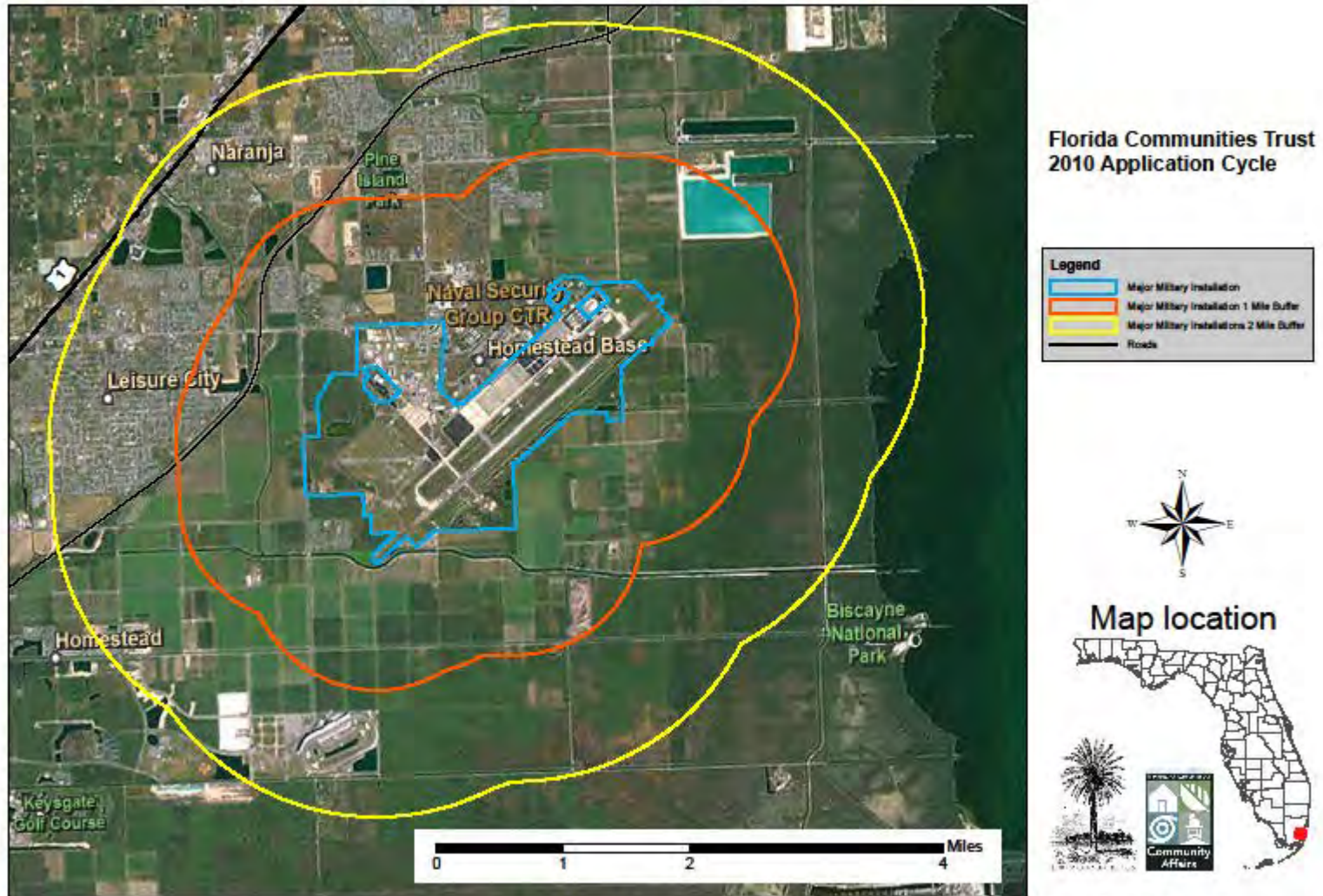


Disclaimer: The purpose of this map is to assist applicants in estimating if their project site may be in the vicinity of a Major Military Installation. This map was made with the best information available to FCT at the time of creation, but FCT can not guarantee its accuracy.

Figure 4

Homestead Air Force Reserve Base

Homestead Air Force Reserve Base

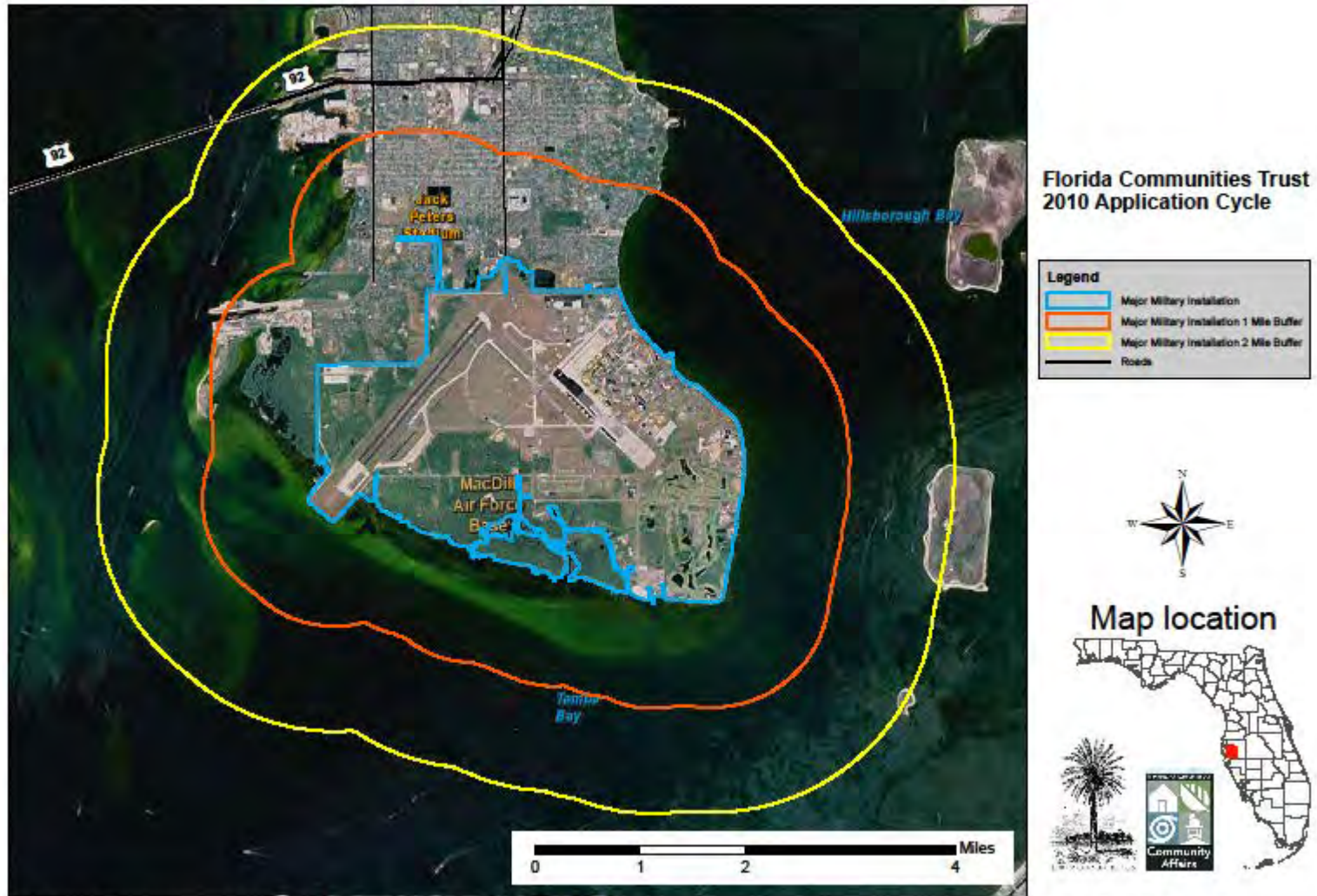


Disclaimer: The purpose of this map is to assist applicants in estimating if their project site may be in the vicinity of a Major Military Installation. This map was made with the best information available to FCT at the time of creation, but FCT can not guarantee its accuracy.

Figure 5

MacDill Air Force Base

MacDill Air Force Base

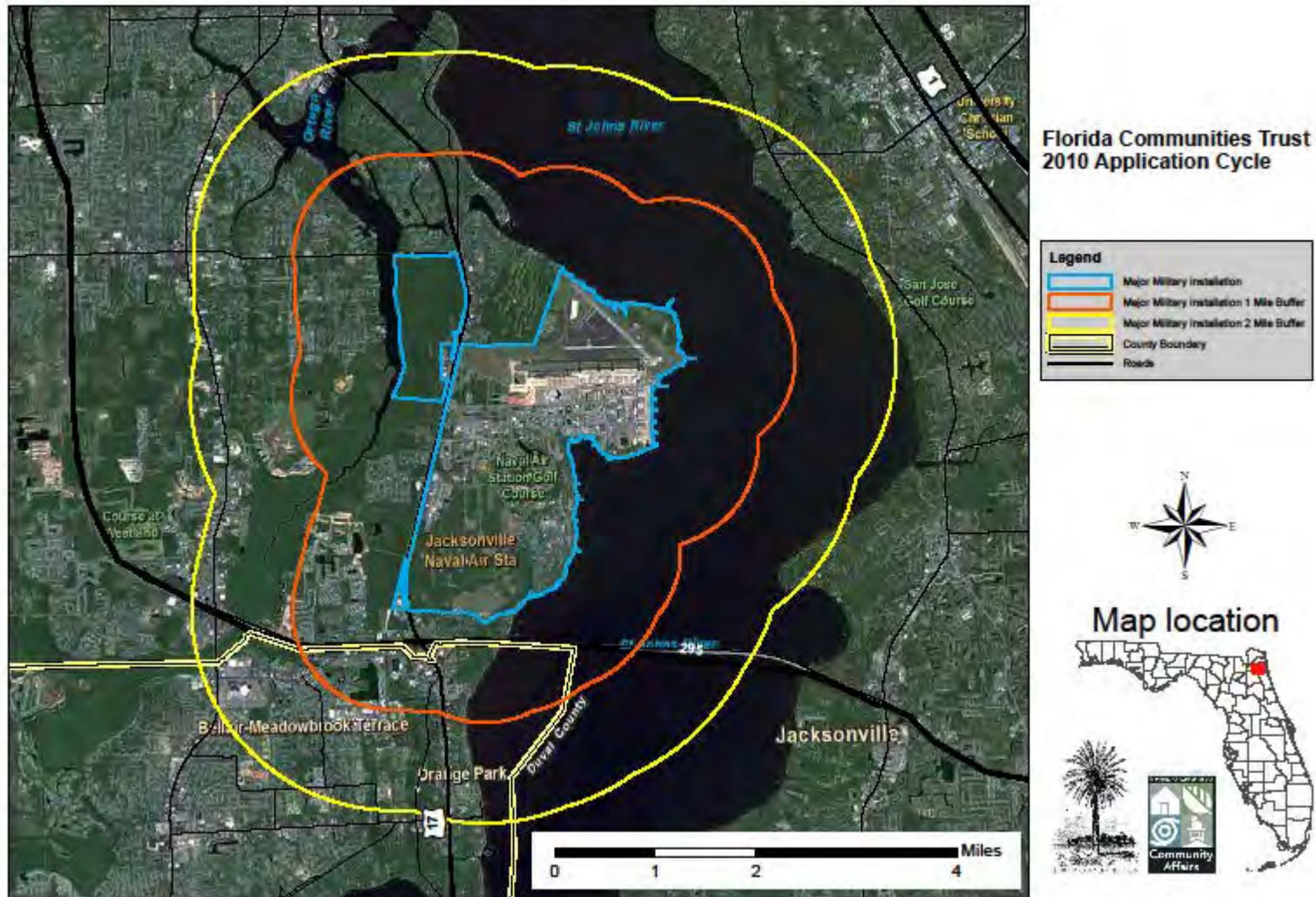


Disclaimer: The purpose of this map is to assist applicants in estimating if their project site may be in the vicinity of a Major Military Installation. This map was made with the best information available to FCT at the time of creation, but FCT can not guarantee its accuracy.

Figure 6

Naval Air Station Jacksonville

Naval Air Station Jacksonville



Florida Communities Trust
2010 Application Cycle



Map location

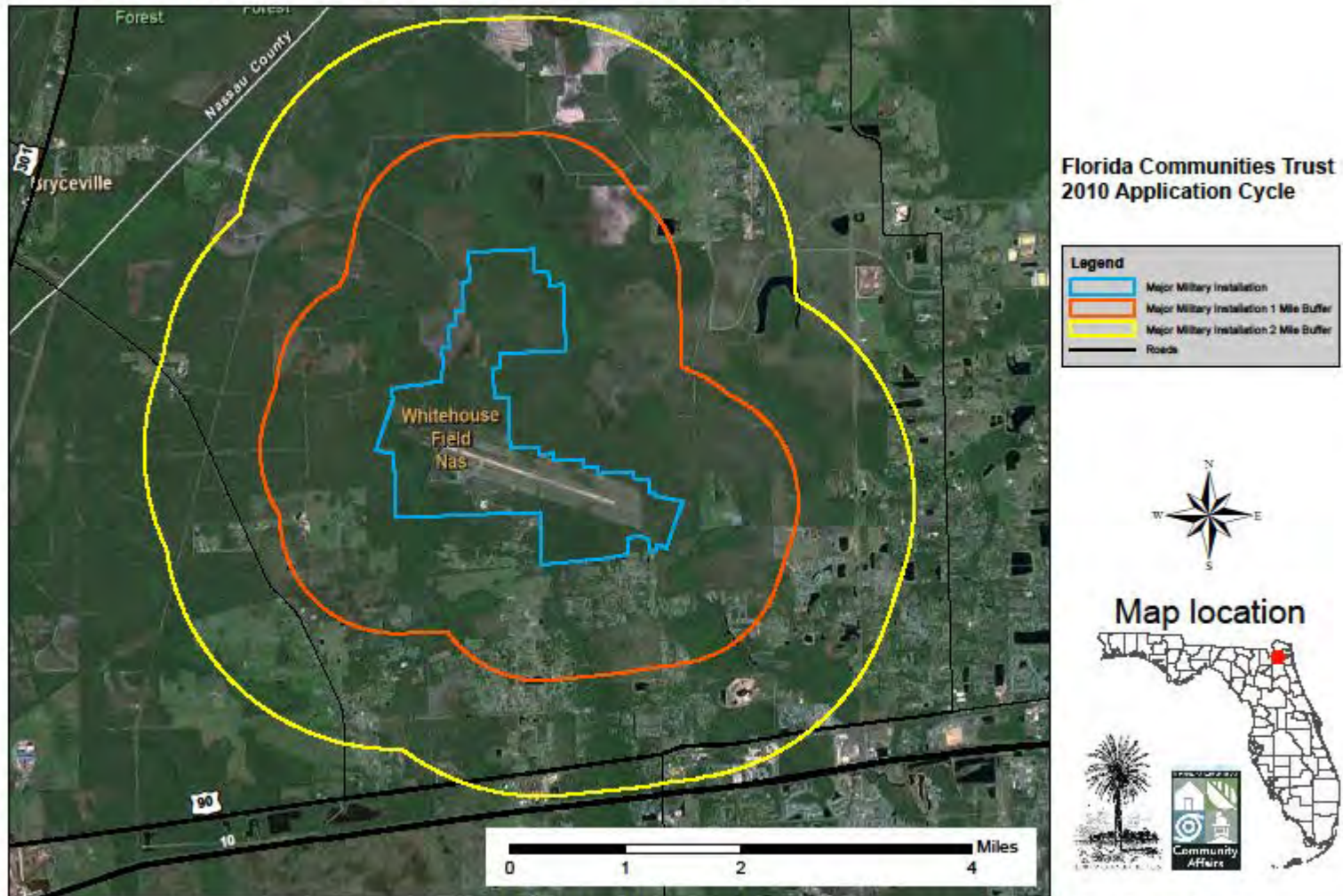


Disclaimer: The purpose of this map is to assist applicants in estimating if their project site may be in the vicinity of a Major Military Installation. This map was made with the best information available to FCT at the time of creation, but FCT can not guarantee its accuracy.

Figure 7

Naval Outlying Field Whitehouse

Naval Air Station Jacksonville Outlying Field Whitehouse



Disclaimer: The purpose of this map is to assist applicants in estimating if their project site may be in the vicinity of a Major Military Installation. This map was made with the best information available to FCT at the time of creation, but FCT can not guarantee its accuracy.

Figure 8

Naval Air Station Key West (Boca Chica)

Naval Air Station Key West (Boca Chica)

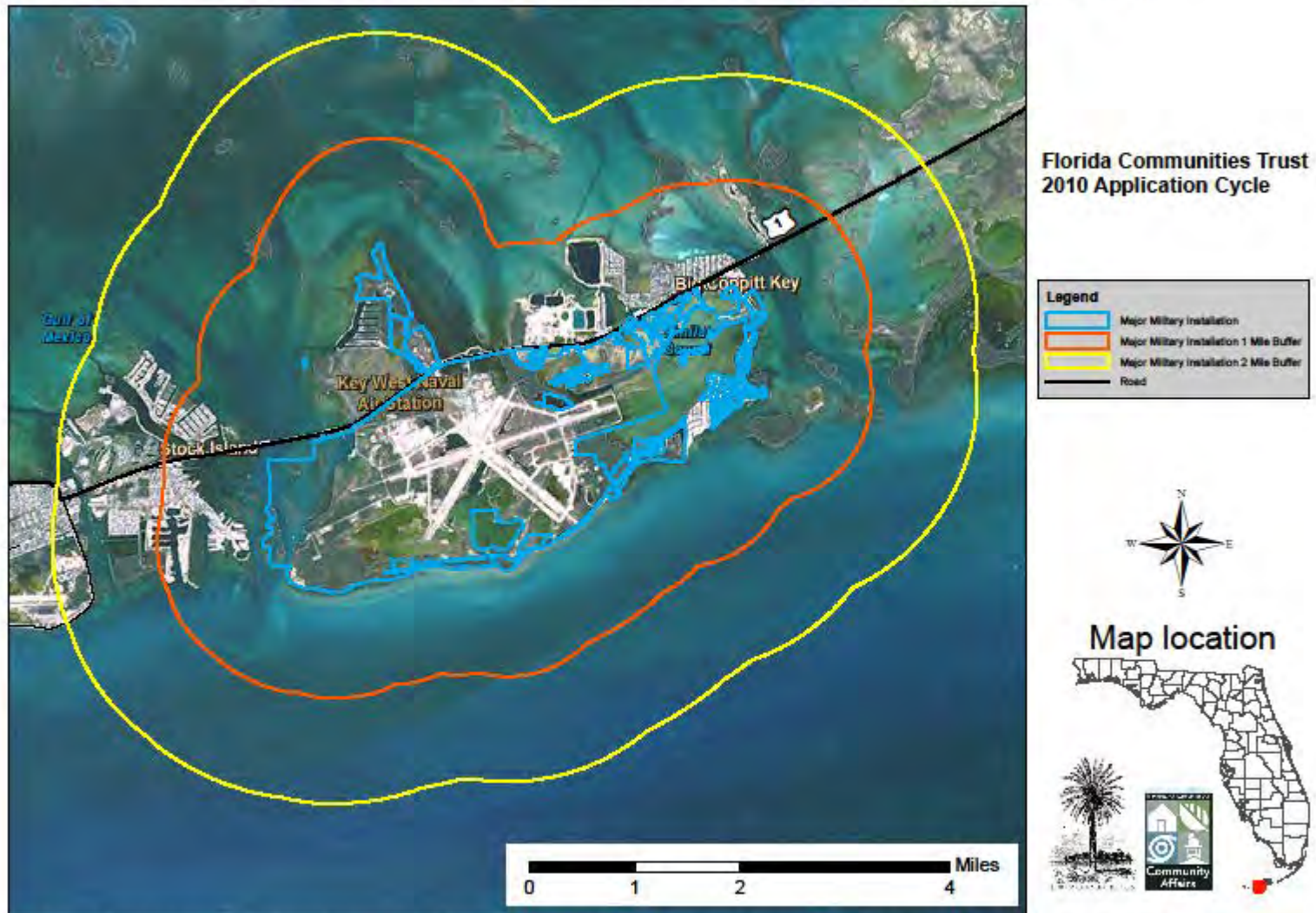
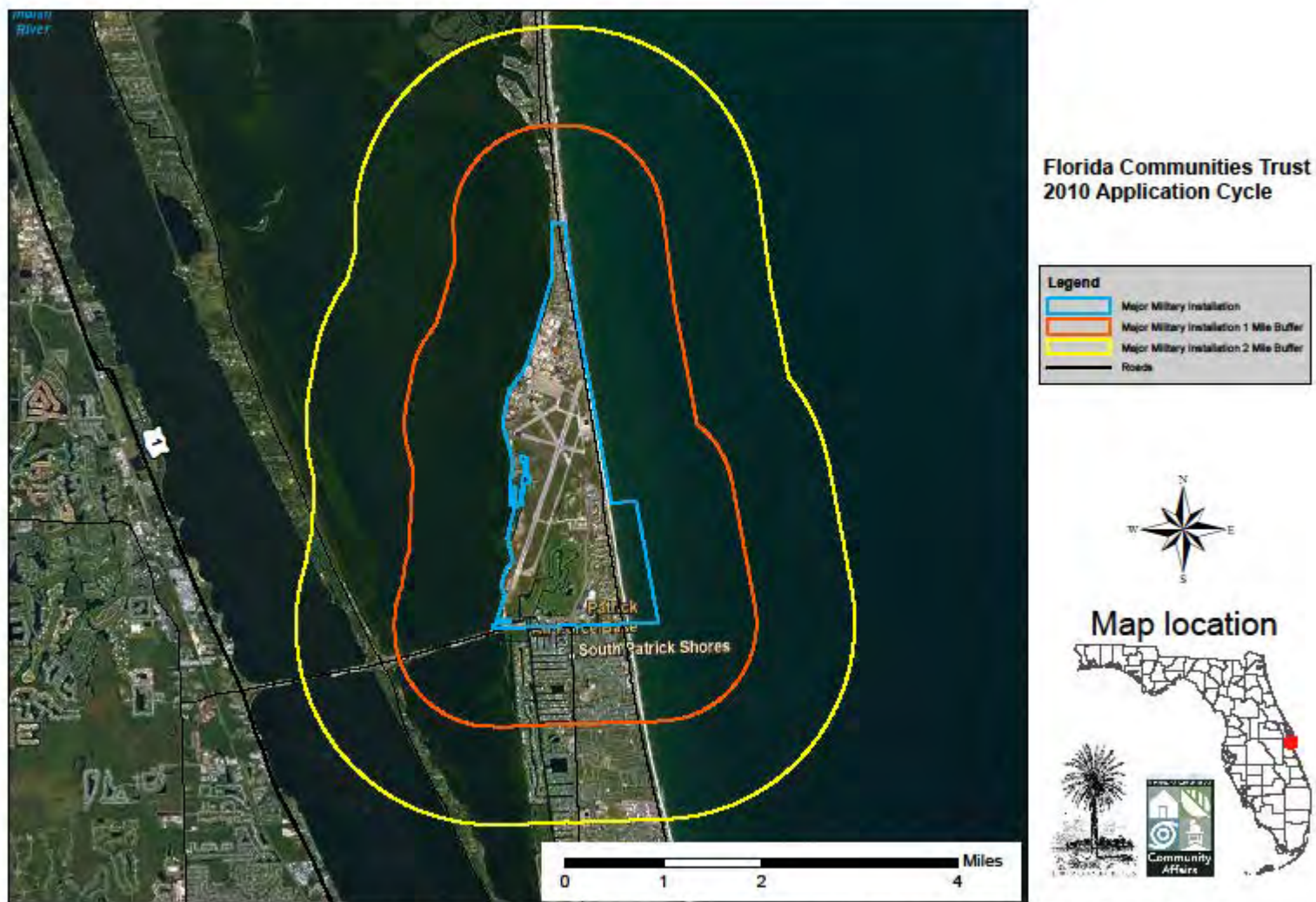


Figure 9

Patrick Air Force Base

Patrick Air Force Base

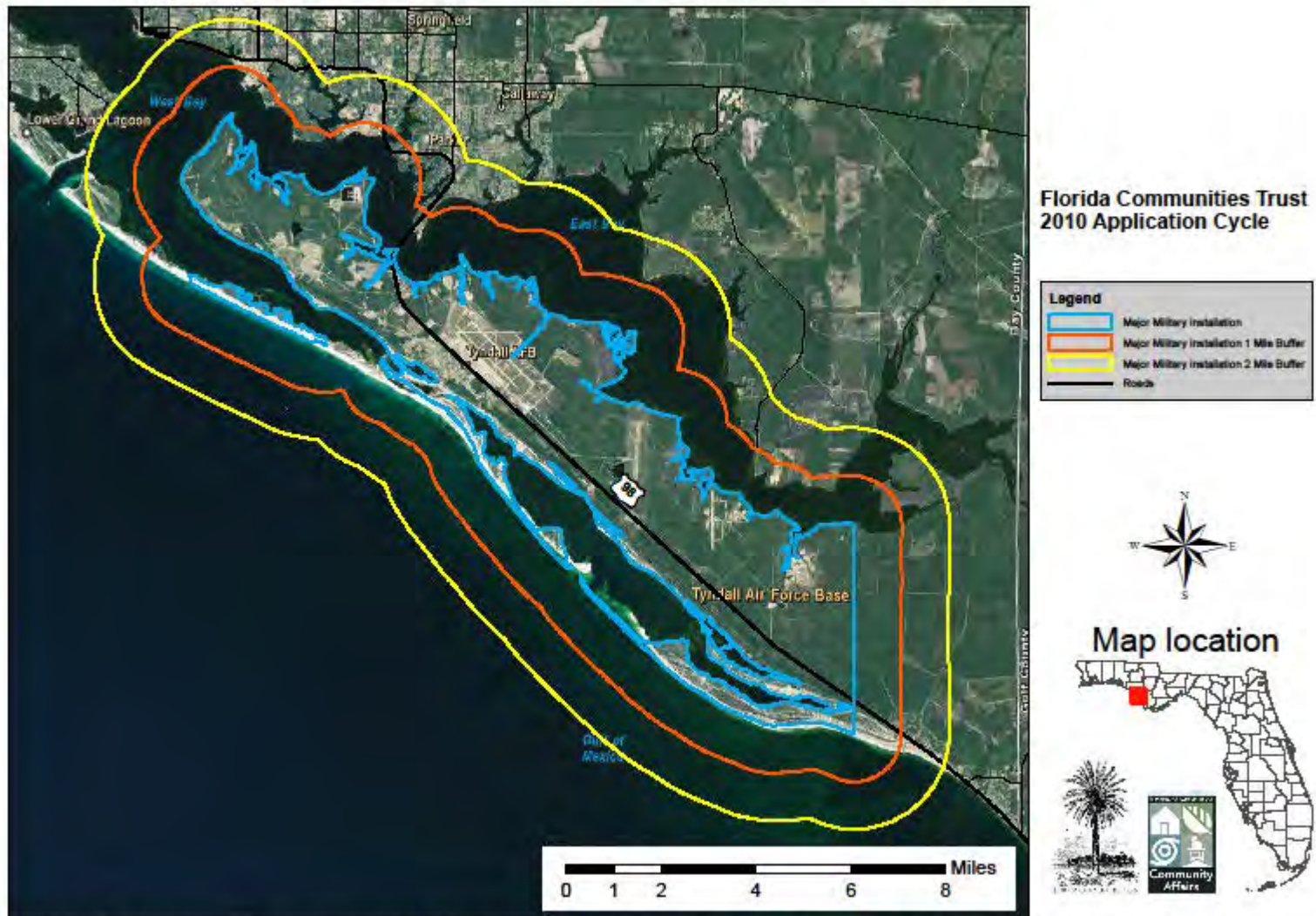


Disclaimer: The purpose of this map is to assist applicants in estimating if their project site may be in the vicinity of a Major Military Installation. This map was made with the best information available to FCT at the time of creation, but FCT can not guarantee its accuracy.

Figure 10

Tyndall Air Force Base

Tyndall Air Force Base

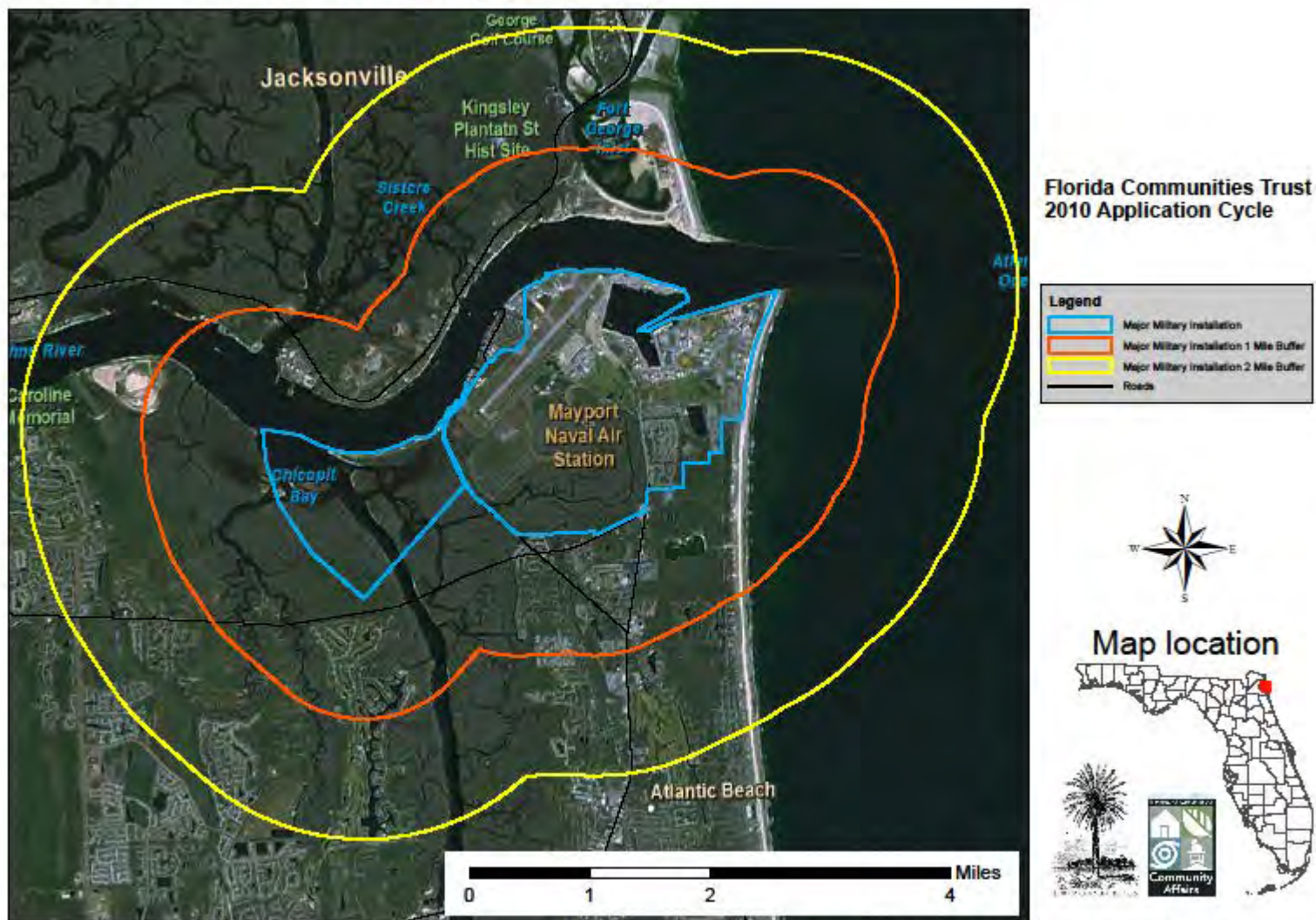


Disclaimer: The purpose of this map is to assist applicants in estimating if their project site may be in the vicinity of a Major Military Installation. This map was made with the best information available to FCT at the time of creation, but FCT can not guarantee its accuracy.

Figure 11

Naval Station Mayport

Naval Station Mayport



Disclaimer: The purpose of this map is to assist applicants in estimating if their project site may be in the vicinity of a Major Military Installation. This map was made with the best information available to FCT at the time of creation, but FCT can not guarantee its accuracy.

Figure 12

Naval Air Station Pensacola (Pensacola Complex)

Naval Air Station Pensacola (Pensacola Complex)

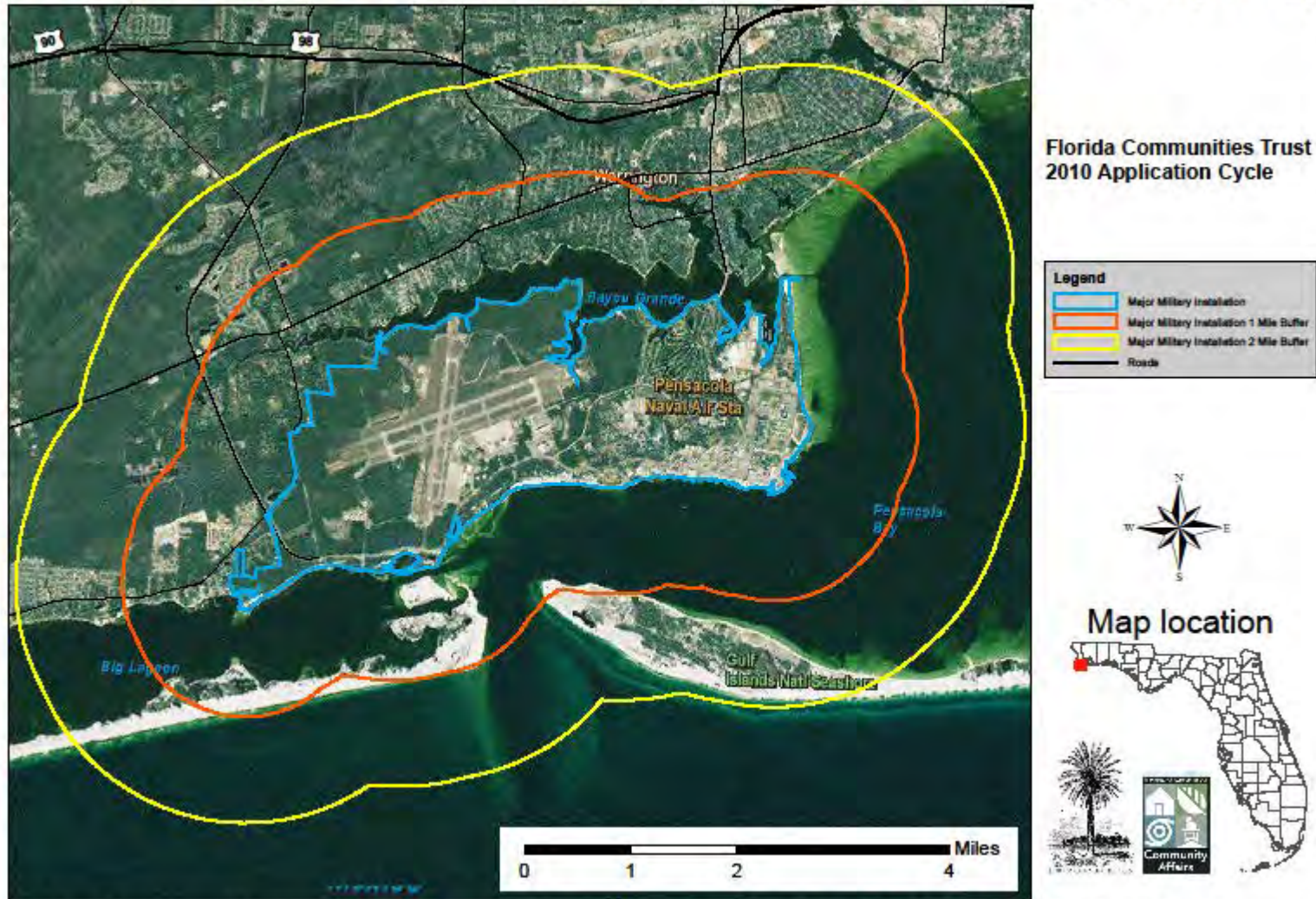
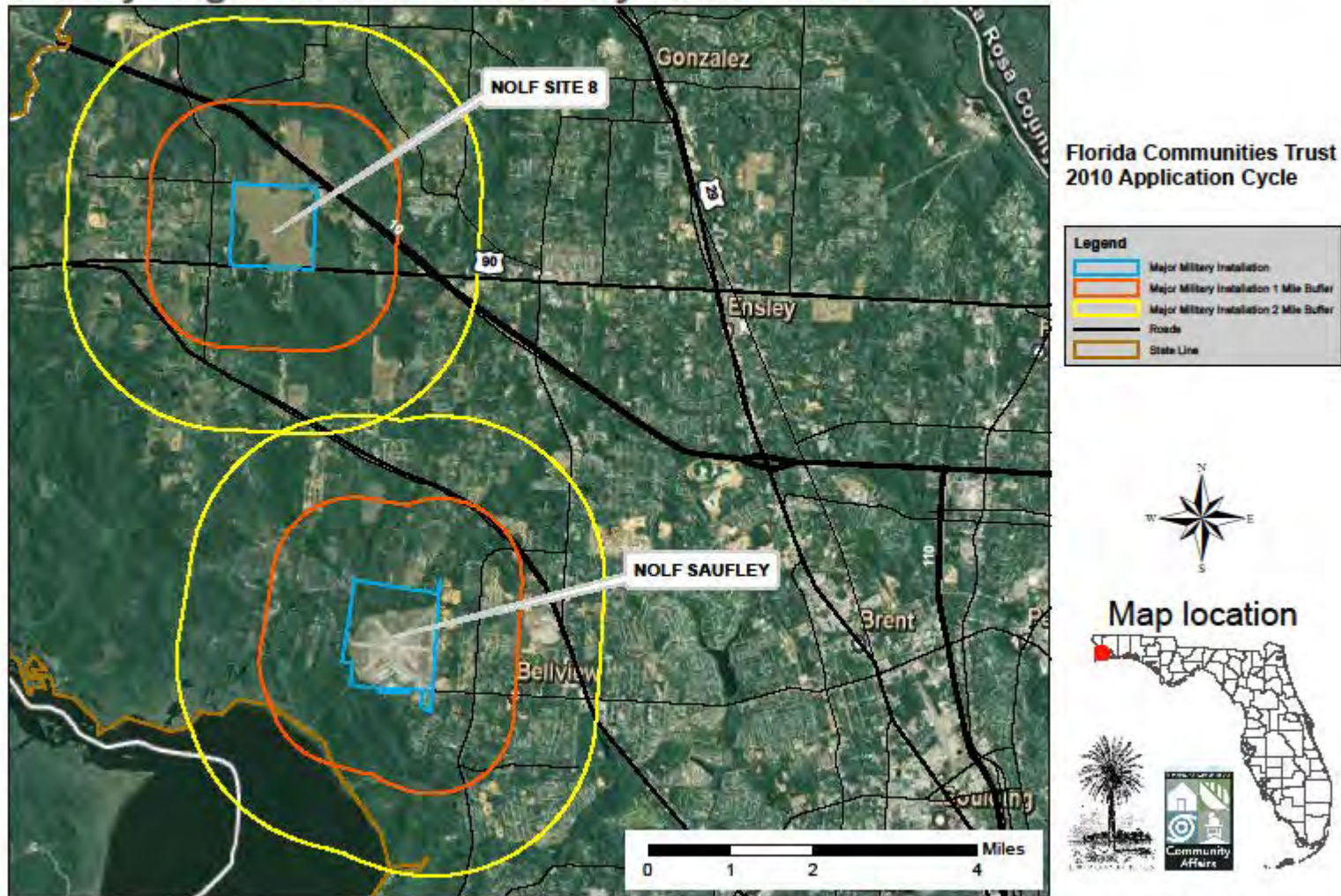


Figure 13

Naval Outlying Fields Saufley and Site 8

Naval Air Station Pensacola (Pensacola Complex) Outlying Fields Saufley and Site 8

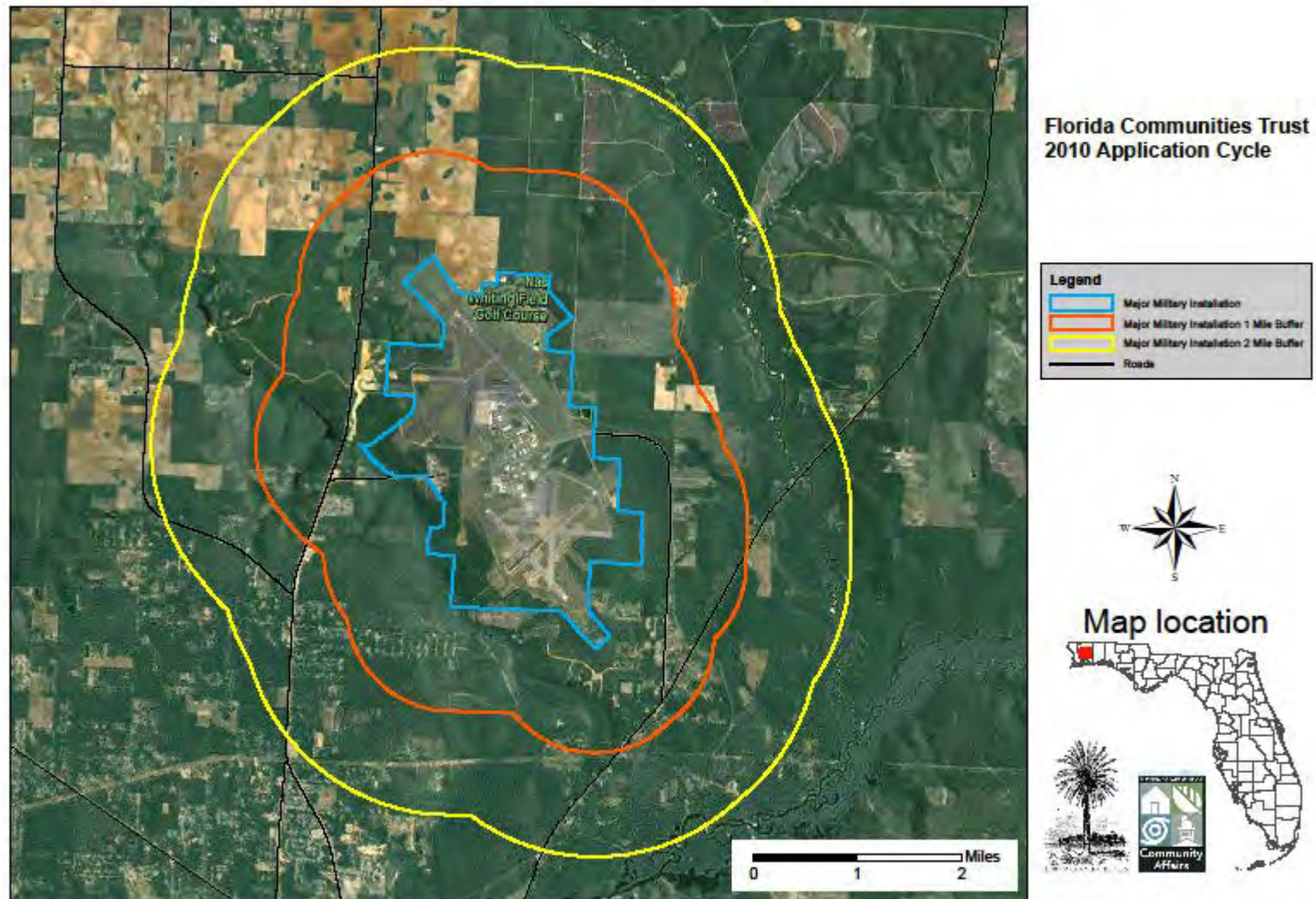


Disclaimer: The purpose of this map is to assist applicants in estimating if their project site may be in the vicinity of a Major Military Installation. This map was made with the best information available to FCT at the time of creation, but FCT can not guarantee its accuracy.

Figure 14

Naval Air Station Whiting Field

Naval Air Station Whiting Field

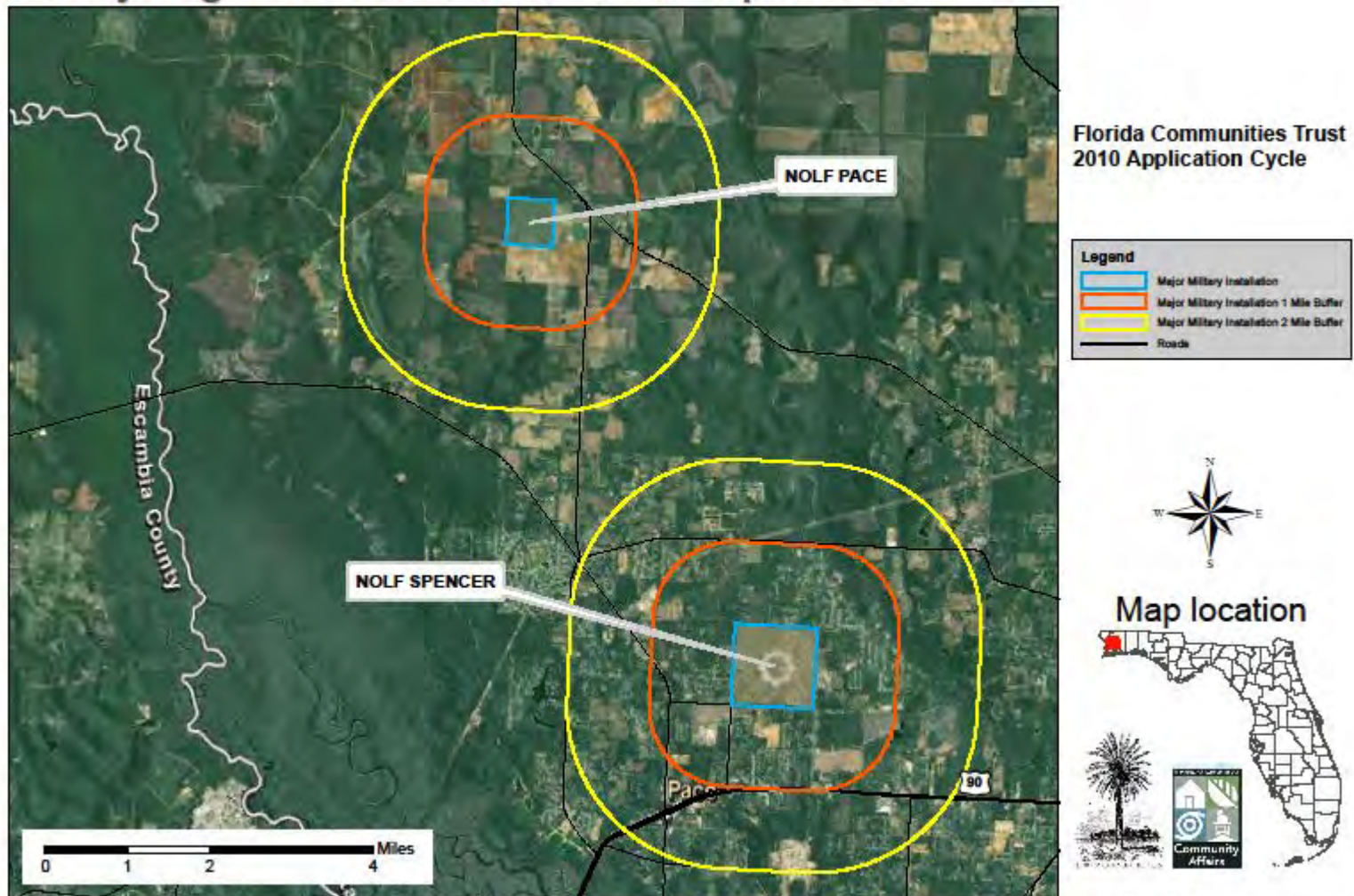


Disclaimer: The purpose of this map is to assist applicants in estimating if their project site may be in the vicinity of a Major Military Installation. This map was made with the best information available to FCT at the time of creation, but FCT can not guarantee its accuracy.

Figure 15

Naval Outlying Fields Pace and Spencer

Naval Air Station Whiting Field Outlying Fields Pace and Spencer



Disclaimer: The purpose of this map is to assist applicants in estimating if their project site may be in the vicinity of a Major Military Installation. This map was made with the best information available to FCT at the time of creation, but FCT can not guarantee its accuracy.

Figure 16