



# FERNANDINA PLAZA HISTORIC STATE PARK

NASSAU COUNTY, FLORIDA



TO FORT CLINCH STATE PARK

Amelia River

FERNANDINA (SAN CARLOS) PLAZA

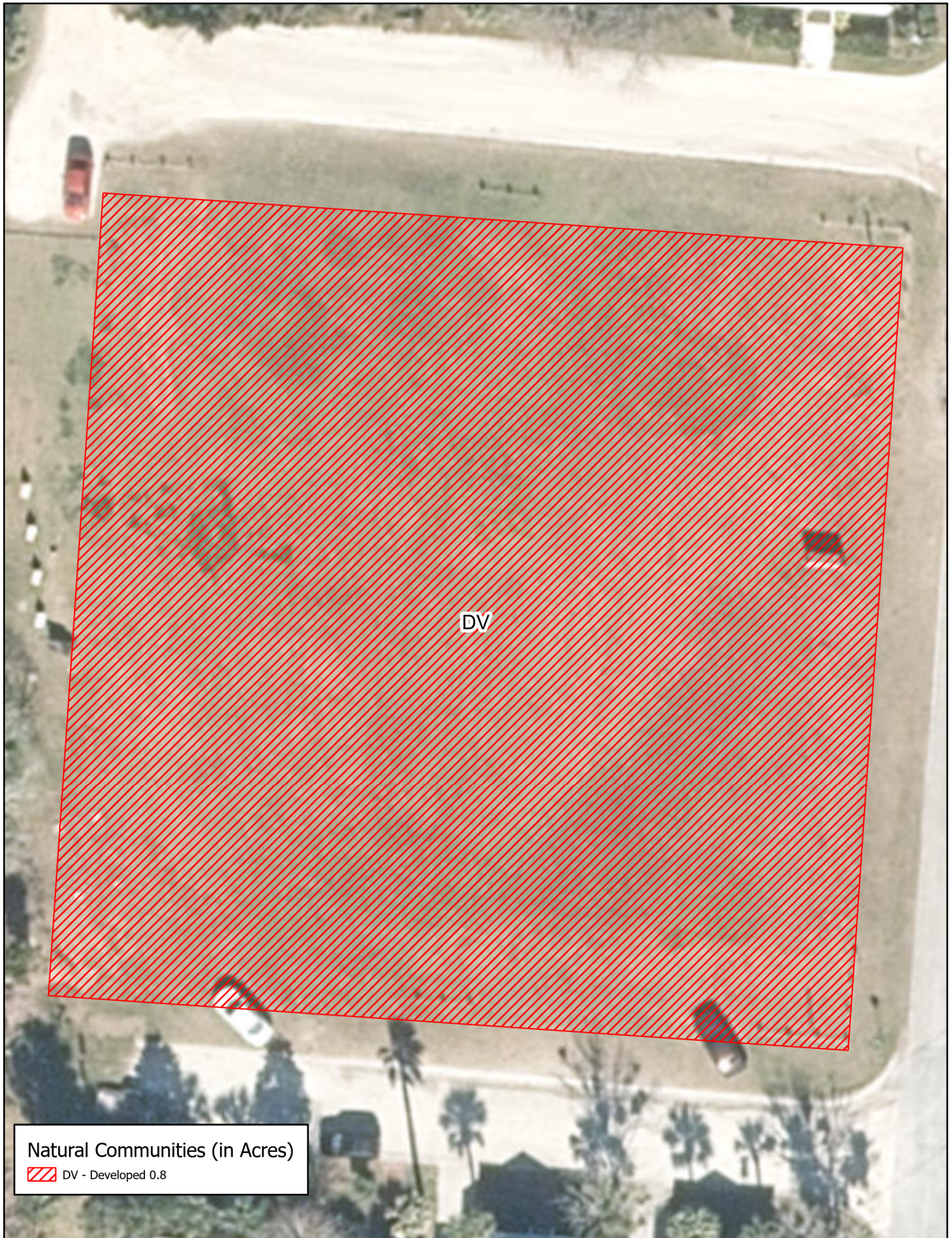
- Historical Marker
- Bench
- Interpretive Panels
- Park Sign
- Historical Marker

- EGANS CREEK DR
- ESTRADA ST
- LADIES ST
- AMELIA ST
- SAN FERNANDO ST
- NEW ST
- WHITE ST
- COMMANDANT ST
- SOMERULUS ST
- GARDEN ST
- BLUFFS
- N 14th ST

OLD TOWN FERNANDINA

TO DOWNTOWN FERNANDINA BEACH

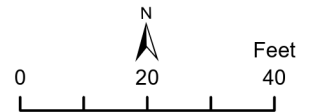
BOSQUE BELLO CEMETERY



Natural Communities (in Acres)  
DV - Developed 0.8



FERNANDINA PLAZA HISTORIC  
STATE PARK  
Natural Communities - Existing Conditions



This graphical representation is provided for informational purposes and should not be considered authoritative for navigational, engineering, legal, and other uses.

Amelia River

White St




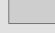
Estrada St




Someruelus St

3

1

2

-  Proposals
-  Structures
-  Historical Marker
-  Parking Lot

-  Plaza - Provide additional benches.
-  Park Boundary - Continue low-lying fencing.
-  Parking Area - Work with City of Fernandina Beach to formalize the parking area.



**Fernandina Plaza Historic State Park**  
 Conceptual Land Use Plan

