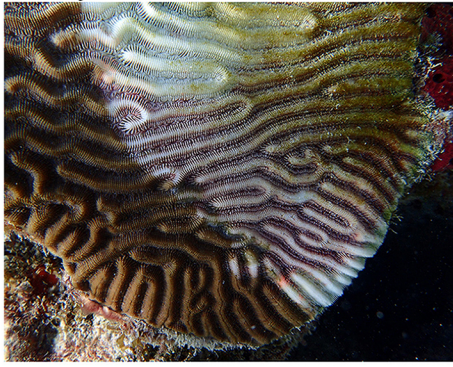


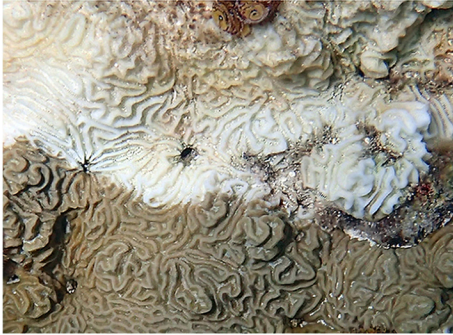
Stony Coral Tissue Loss Disease



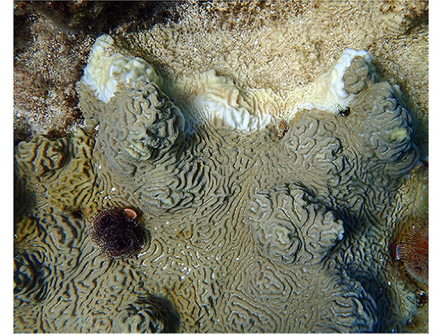
Symmetrical Brain Coral *Pseudodiploria strigosa*



PSTR



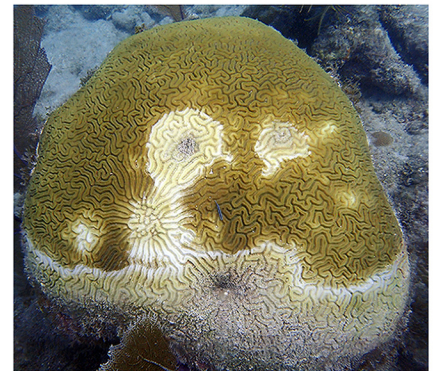
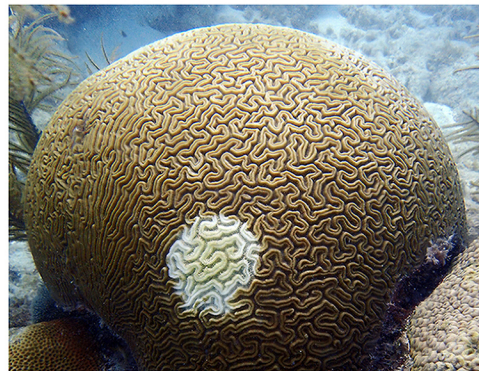
Knobby Brain Coral *Pseudodiploria clivosa*



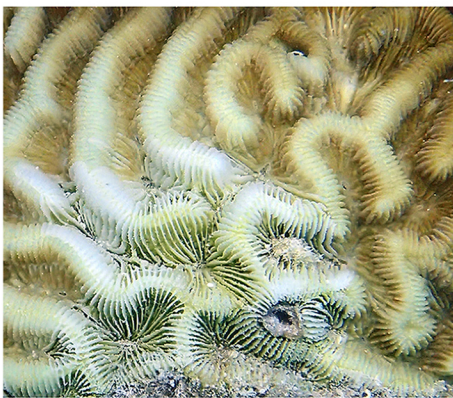
PCLI



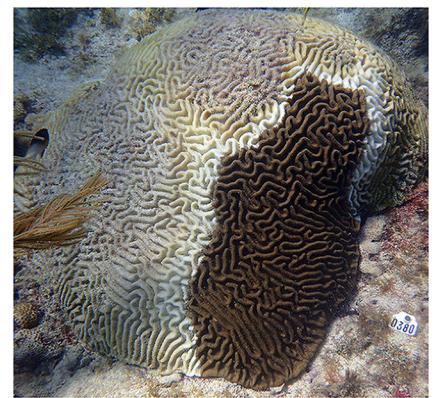
Grooved Brain Coral *Diploria labyrinthiformis*



DLAB



Boulder Brain Coral *Colpophyllia natans*



CNAT



Maze Coral



Meandrina meandrites



MMEM



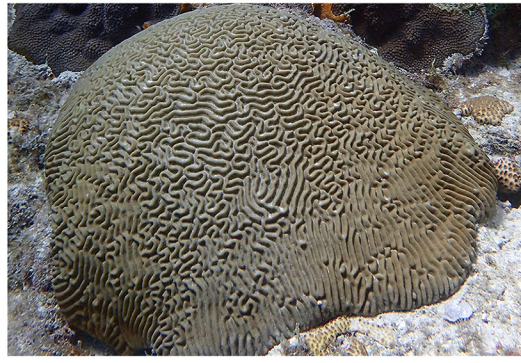
Stony Coral Tissue Loss Disease

HEALTHY

DISEASED



PSTR



Symmetrical Brain Coral *Pseudodiploria strigosa*



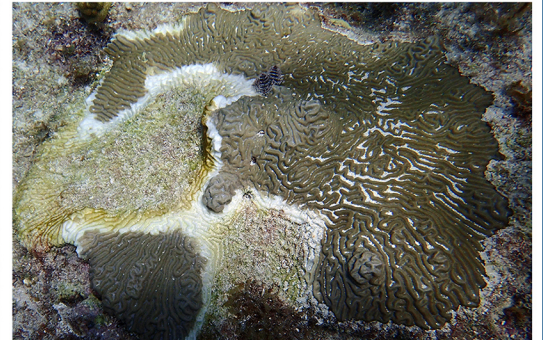
PSTR



PCLI



Knobby Brain Coral *Pseudodiploria clivosa*



PCLI



DLAB



Grooved Brain Coral *Diploria labyrinthiformis*



DLAB



CNAT



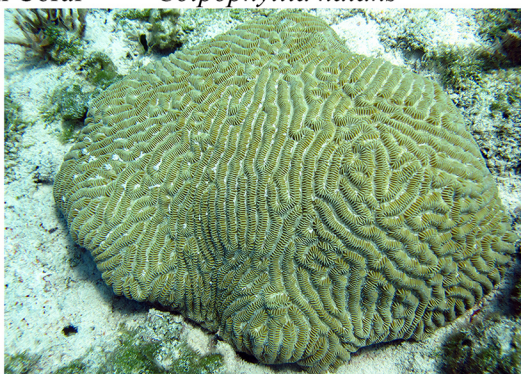
Boulder Brain Coral *Colpophyllia natans*



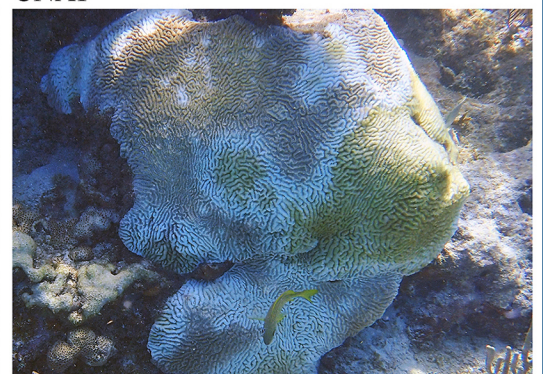
CNAT



MMEA



Maze Coral *Meandrina meandrites*



MMEA

Andrew Bruckner, FKNMS

