



DIVISION OF STATE LANDS FLORIDA FOREVER ACQUISITION UPDATE

Fakahatchee Strand Preserve State Park
John Moran



Happy 20th Birthday Florida Forever!

- A successful and respected program with established processes and procedures for the identification, evaluation and acquisition of conservation lands.
- Lands purchased through Florida Forever are now enjoyed as state parks, state forests, state wildlife management areas, or as local park and conservation areas.
- We appreciate our conservation partners, the landowners that are such good stewards of the land and the leadership that supports us!



Hardee Flatwoods
Conservation Easement



Florida Forever Acquisitions FY 2020-2021

78 purchase transactions = 46,248 acres/\$105,961,674 for FY 2020-2021 *

- Annutteliga Hammock
- Charlotte Harbor Flatwoods
- Coupon Bight/Key Deer
- Devils Garden
- Dickerson Bay/Bald Point
- Etoniah/Cross Florida Greenway
- Fakahatchee Strand
- Florida Keys Ecosystem
- Florida Springs Coastal Greenway
- Florida's First Magnitude Springs
- Garcon Ecosystem
- Green Swamp
- Lake Santa Fe
- Lake Wales Ridge Ecosystem
- Myakka Ranchlands
- North Key Largo Hammocks
- Peace River Refuge
- Seven Runs Creek Final Phase
- St. Joe Timberland
- St. Joseph Bay Buffer
- Tippen Bay Ranch
- Upper St. Marks River Corridor
- Wekiva-Ocala Greenway
- Wolfe Creek Forest

****MORE PRODUCTION IN 2020-2021 FISCAL YEAR THAN ANY OF THE PREVIOUS TWELVE YEARS***



Devils Garden
Okaloacoochee Slough Wildlife Management Area



Florida Forever Recent BOT Approved Acquisitions

September Florida Forever BOT Approved Acquisitions

16,524 acres / \$47,187,200

- Coastal Headwaters Longleaf Forest – Fee – 2,115 acres
- Corrigan Ranch – Fee – 4,381 acres
- Devils Garden – Fee – 1,638 acres
- Hardee Flatwoods – CE – 1,661 acres
- Kissimmee St. Johns River Connector – CE – 6,665 acres
- Millstone Plantation – CE – 64 acres





Florida Forever Active Project Areas

- Annutteliga Hammock
- Belle Meade
- Bluefield to Cow Creek
- Charlotte Harbor Estuary
- Charlotte Harbor Flatwoods
- Coastal Headwaters Longleaf Forest
- Devils Garden
- Etoniah/Cross Florida Greenway
- Fakahatchee Strand
- Fisheating Creek
- Florida Keys Ecosystem
- Kissimmee St. Johns River Connector
- Lake Wales Ride Ecosystem
- North Waccasassa Flats
- Osceola Pine Savannas
- Pine Island Slough Ecosystem
- Pinhook Swamp
- Pumpkin Hill Creek
- Rainbow River Corridor
- Red Hills Conservation Area
- San Pedro Bay
- South Goethe
- Strategic Managed Area Lands List (SMALL)
- Wakulla Springs Protection Zone
- Wekiva-Ocala Greenway
- Wolfe Creek Forest





Florida Forever Annual Funding Review

FISCAL YEAR	APPROPRIATION	ACRES ACQUIRED	EXPENDITURES	ENDING BALANCE
2015 - 2016	\$17,400,000	1,867	\$4,608,111	\$91,330,541
2016 - 2017	\$15,156,206	26,798	\$27,893,125	\$78,593,622
2017 - 2018	\$0	9,335	\$25,110,972	\$53,482,650
2018 - 2019	\$77,000,000	22,775	\$19,135,745	\$111,346,905
2019 - 2020	\$33,000,000	27,253	\$61,626,547	\$82,720,358
2020 - 2021	\$67,000,000	46,248	\$105,961,674	\$43,758,685
*2021 - 2022	\$100,000,000	2,119	\$1,431,770	\$142,326,915

(*July 1 - September 30)

IN PROGRESS

Closing
Cabinet Agenda
Negotiations
Valuation
Due Diligence

ANTICIPATED EXPENDITURES

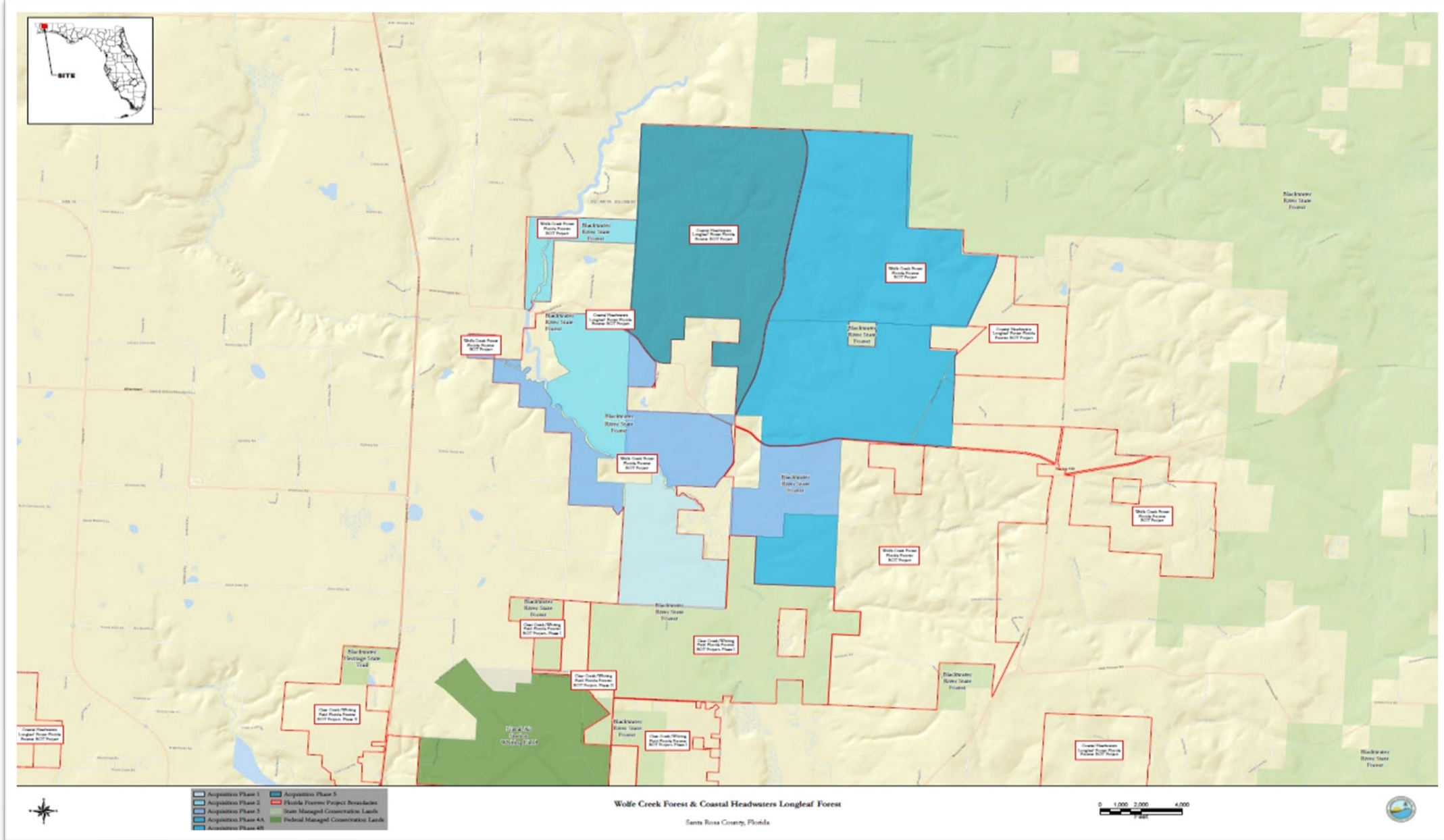
\$44,181,039
TBD - December
\$45,796,160
\$48,865,000
\$167,375,500

ANTICIPATED BALANCE

\$98,145,876
\$98,145,876
\$52,349,716
\$3,484,716
(\$163,890,784)

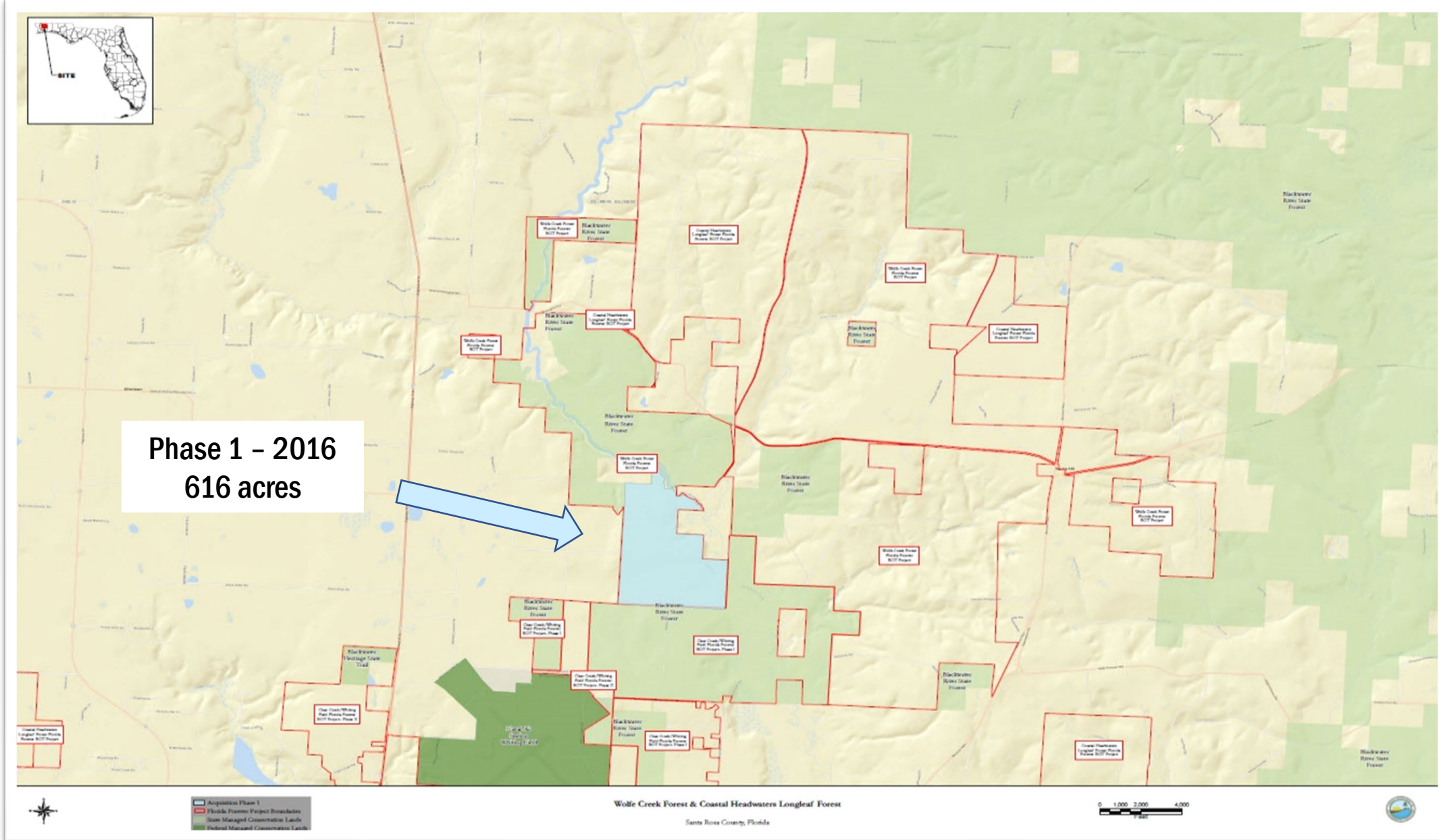


Wolfe Creek Forest & Coastal Headwaters Longleaf Forest



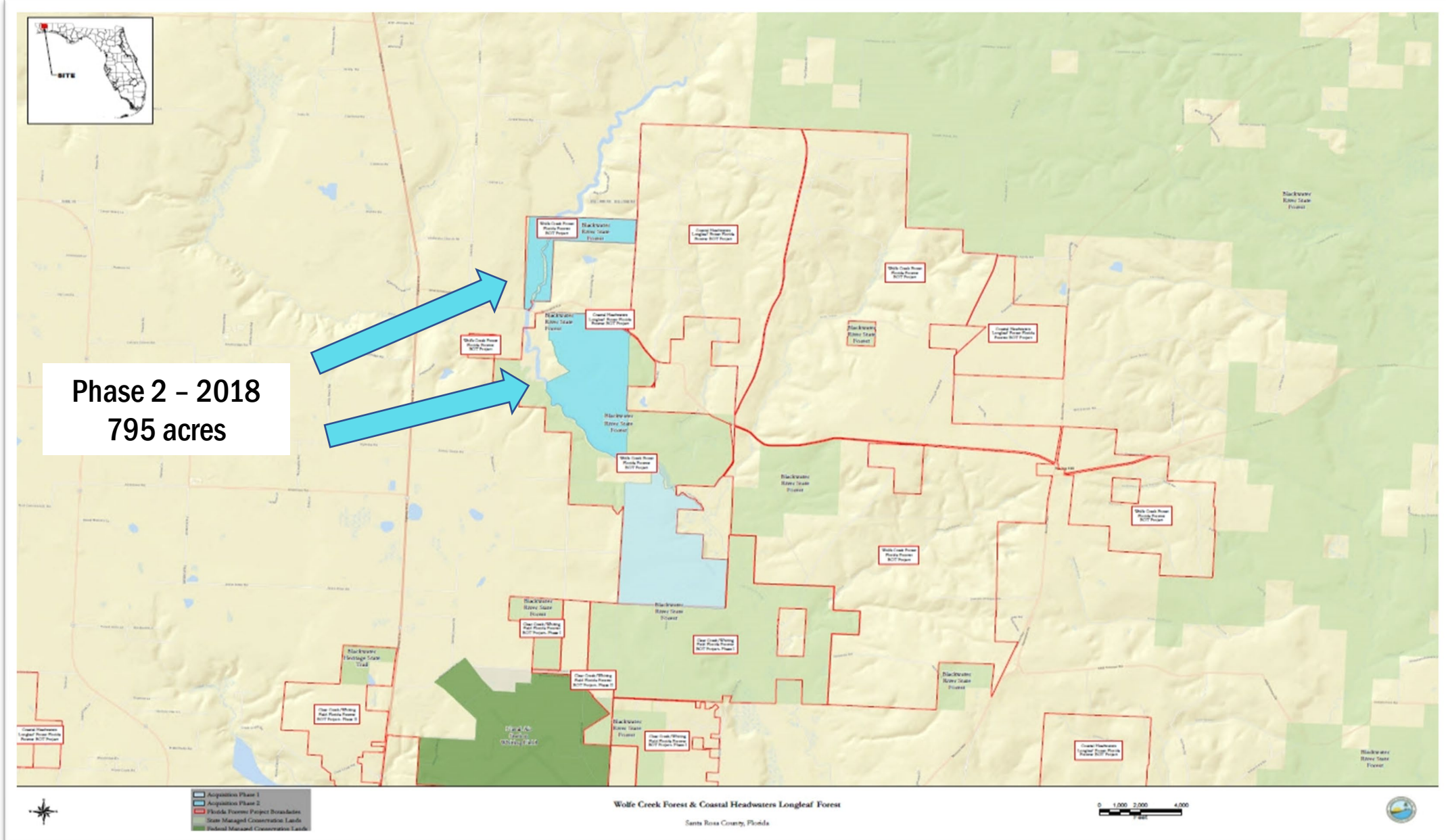


Wolfe Creek Forest & Coastal Headwaters Longleaf Forest



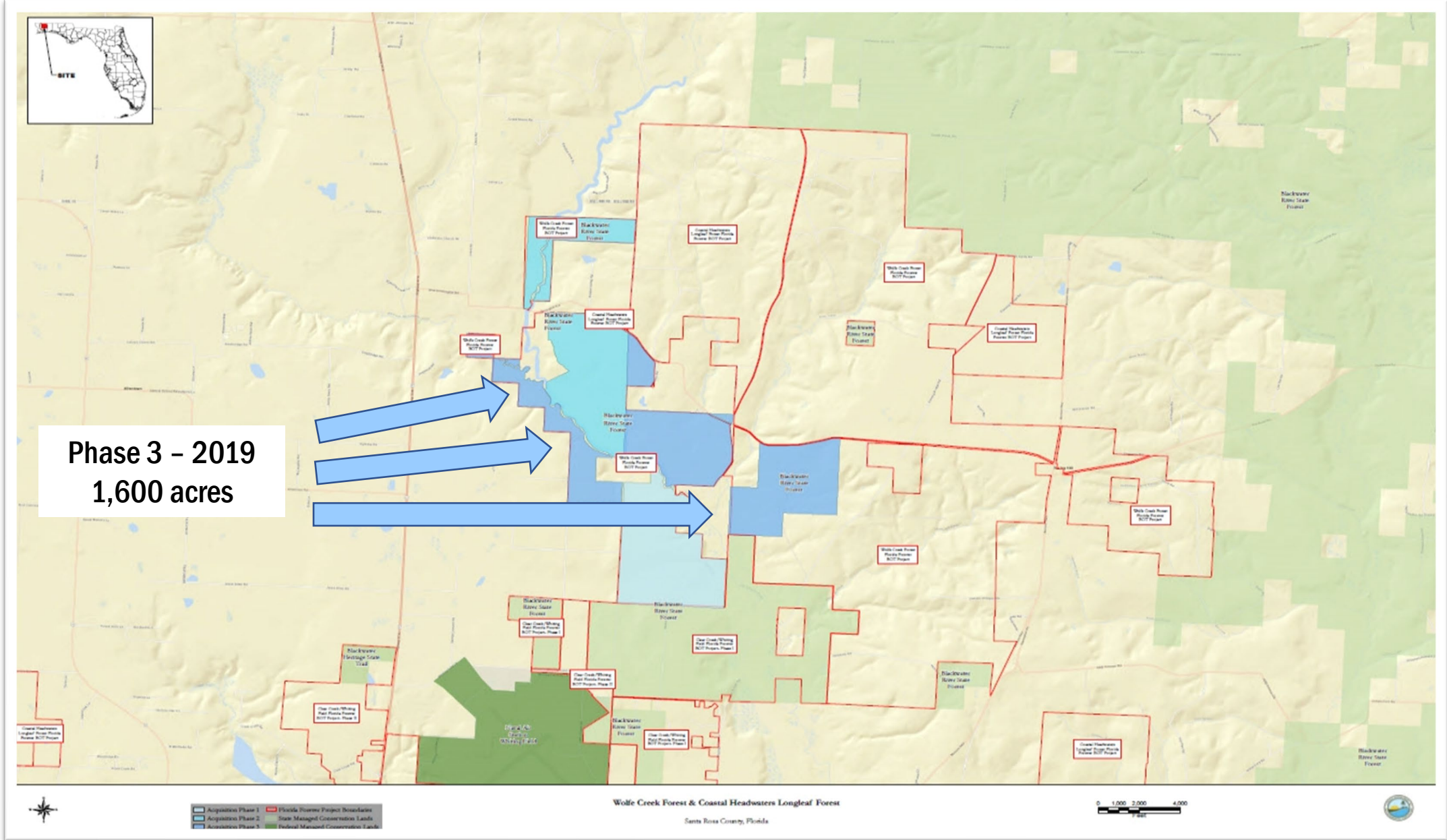


Wolfe Creek Forest & Coastal Headwaters Longleaf Forest



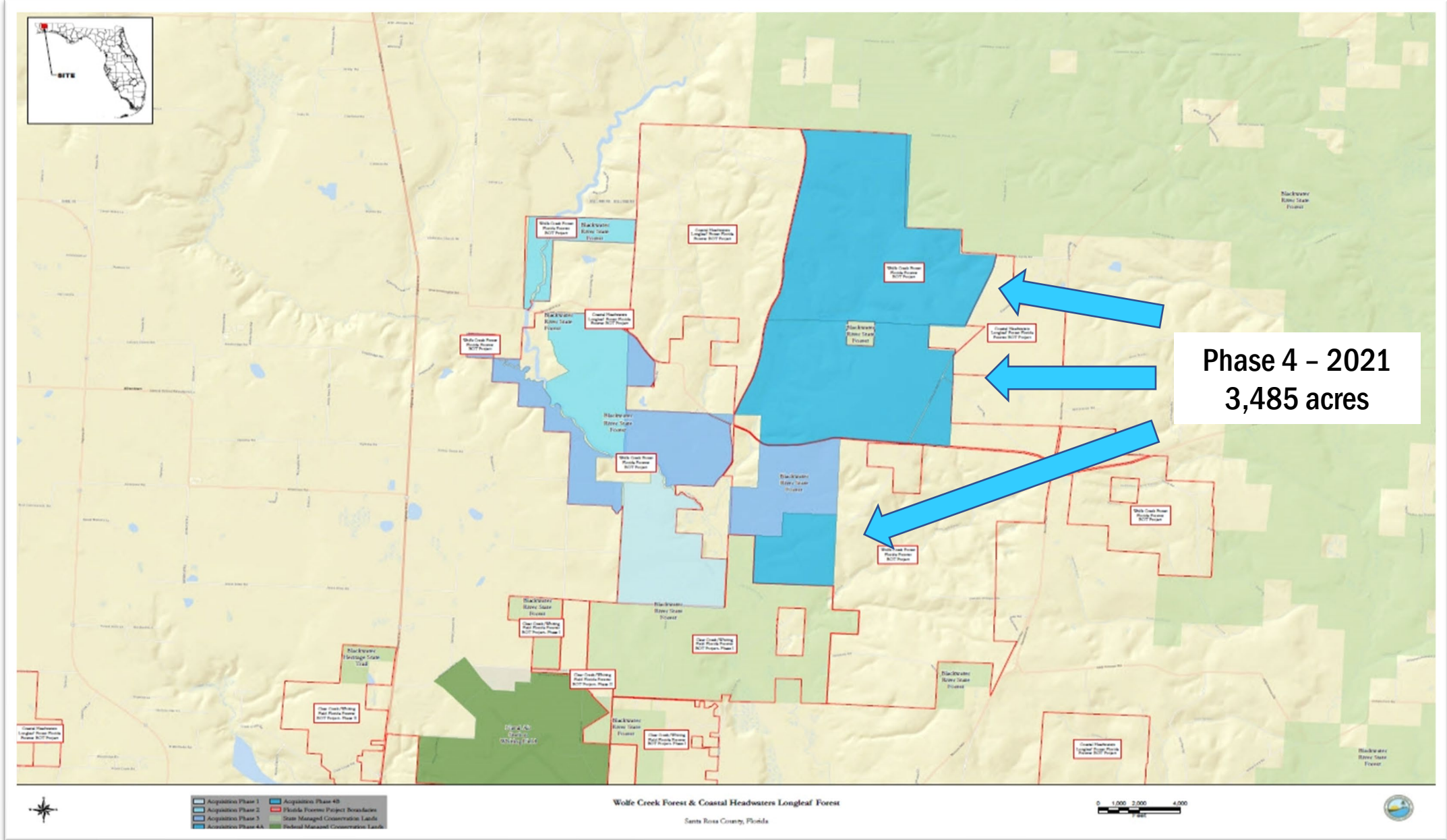


Wolfe Creek Forest & Coastal Headwaters Longleaf Forest





Wolfe Creek Forest & Coastal Headwaters Longleaf Forest

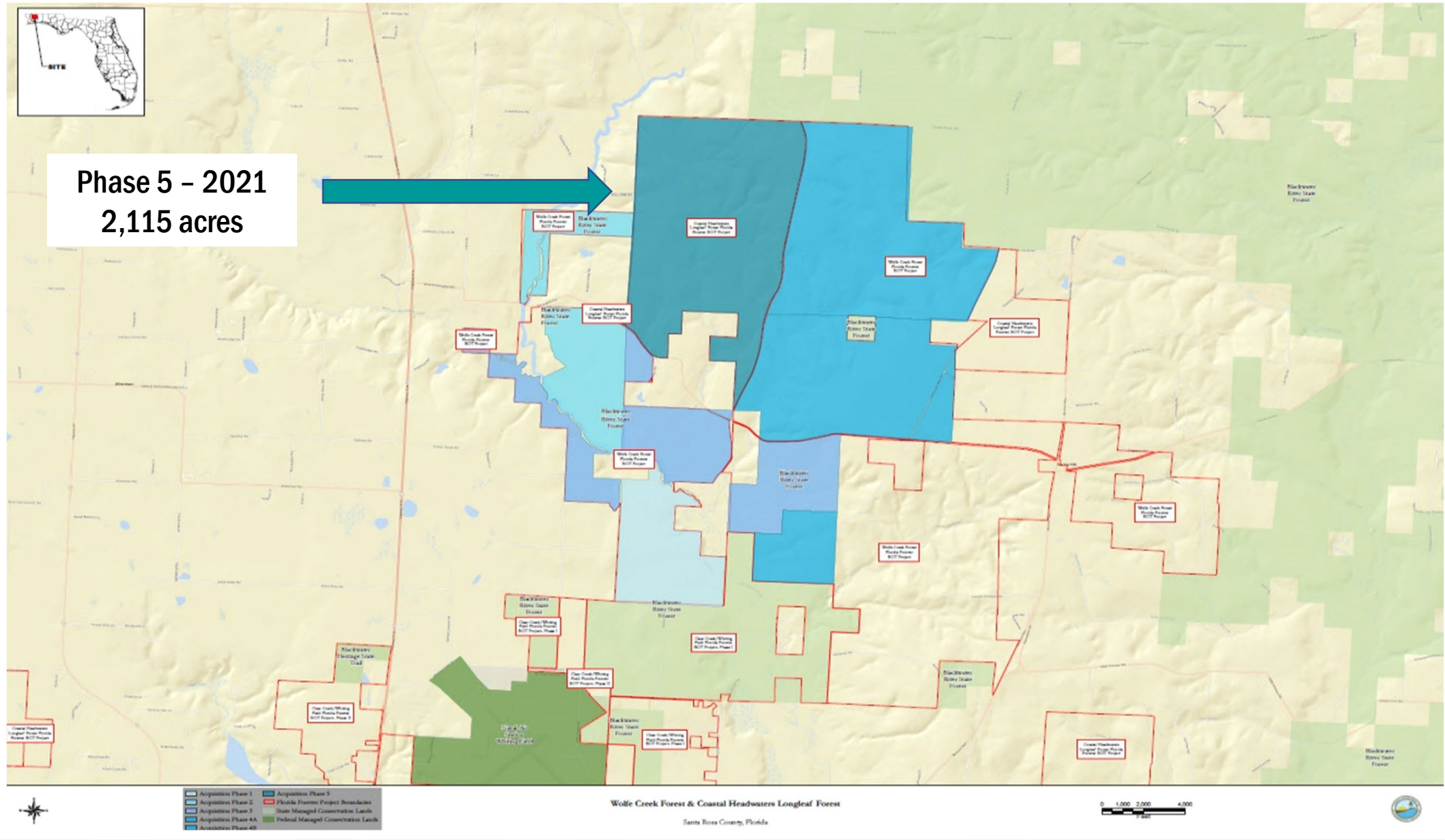
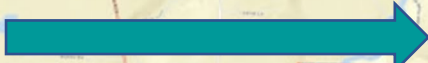




Wolfe Creek Forest & Coastal Headwaters Longleaf Forest



Phase 5 - 2021
2,115 acres





CONTACT INFORMATION

Robbie Parrish
Chief
Bureau of Real Estate Services
Division of State Lands
Robbie.Parrish@FloridaDEP.gov
Phone (850) 245-2497

*Project mapping credits to G.W. Stelter with DSL's
Bureau of Surveying & Mapping

*Project photography credits to Carlton Ward, Jr.
[@carltonward](#) [@pathofthepanther](#)

Millstone Plantation
Conservation Easement

Kissimmee St. Johns River Connector
Conservation Easement