

**ITEM 6:**

Consider a request to remove approximately 19.26 acres from the boundary of the Flagler County Blueway Florida Forever Project.

**LOCATION:**

Flagler County

**DSL STAFF REMARKS:**

Brian Metcalf purchased one lot totaling 19.26 acres in Flagler County in 2018. The land had been included in the design of the Flagler County Blueway Florida Forever Project. The owner submitted a certified letter to DSL requesting removal of their property from the project. The property is adjacent to the Betty Steflick Memorial Preserve and bordered on the opposite side by single-family housing.

The Flagler County Blueway Project was added to the Florida Forever Priority List in 2003. The purpose of the project is to protect remaining flatwoods, marshes, swamps, and hammocks while providing resource-based public recreation opportunities. The project currently includes 4,281 acres of which 3,192 acres remain to be acquired.

Pursuant to Rule 18-24.005(5)(a), and 18-24.007(2), F.A.C., ARC shall remove property from a Florida Forever project boundary if a landowner requests to do so by a certified letter. ARC may recommend that the Board of Trustees of the Internal Improvement Trust Fund (BOT) add such property back into the project boundary, if appropriate. Pursuant to Section 259.105(7)(b)2, Florida Statutes, the BOT has the option of adding this property back into the project boundary if the BOT determines that the property is critical to achieve the purposes of the project.

**DSL STAFF RECOMMENDATION:**

Vote to approve the owner-requested deletion, with no further recommendation to the Board of Trustees.

**ARC RECOMMENDATION:**

( ) ACCEPT OWNER-REQUESTED DELETION

( ) ACCEPT OWNER-REQUESTED DELETION AND RECOMMEND THAT THE BOARD OF TRUSTEES ADD OWNER-REQUESTED DELETION BACK INTO THE PROJECT BOUNDARY

| <b>Project</b>         | <b>DHR</b> | <b>FFS</b> | <b>Lynetta Griner</b> | <b>FWC</b> | <b>Bill Palmer</b> | <b>Elva Peppers</b> | <b>DEP</b> | <b>Selected</b> |
|------------------------|------------|------------|-----------------------|------------|--------------------|---------------------|------------|-----------------|
| Flagler County Blueway |            |            |                       |            |                    |                     |            |                 |

Parcels to be deleted from the boundary: Flagler County Property Appraiser

| <b>Parcel Id</b>         | <b>Acres</b> | <b>Tax Value</b>  | <b>Market Value</b> |
|--------------------------|--------------|-------------------|---------------------|
| 13-12-31-0000-02010-0000 | 19.26        | \$4,815.00        | \$4,815.00          |
| <b>Totals</b>            | <b>19.26</b> | <b>\$4,815.00</b> | <b>\$4,815.00</b>   |



To: Sine Murray, DEP/OES  
From: Dan Hipes, FNAI  
Date: June, 2021  
Subject: Proposed boundary modification (removal) to Florida Forever BOT Project—  
Flagler County Blueway

The Flagler County Blueway project encompasses approximately 5,015 acres of remaining undeveloped land along the intra-coastal waterway from Pellicer Creek south to the Flagler County line. The primary goals of the project are to increase biodiversity protection, increase urban open space, and increase natural resource-based public recreation and educational opportunities.

The proposed boundary modification is a removal at the request of the landowner of approximately 19 acres adjacent to the Betty Steflik Memorial Preserve along Smith Creek near Flagler Beach. The property is undeveloped estuarine wetlands and open water. Vegetated portions consist of many mangrove islands of varying size. Aerial photography shows evidence of old mosquito ditches, navigation canals and small spoil islands.

The property is within an area mapped by FWC as having frequent use by Florida Black bear. No other rare species are recorded in the FNAI database for the site.

The Florida Forever Measures Evaluation (FFME) on the following page is based on the Florida Forever Conservation Needs Assessment developed by FNAI. The data used in that analysis represent a standardized, statewide perspective of natural community distributions based primarily on data from the Cooperative Land Cover Map.

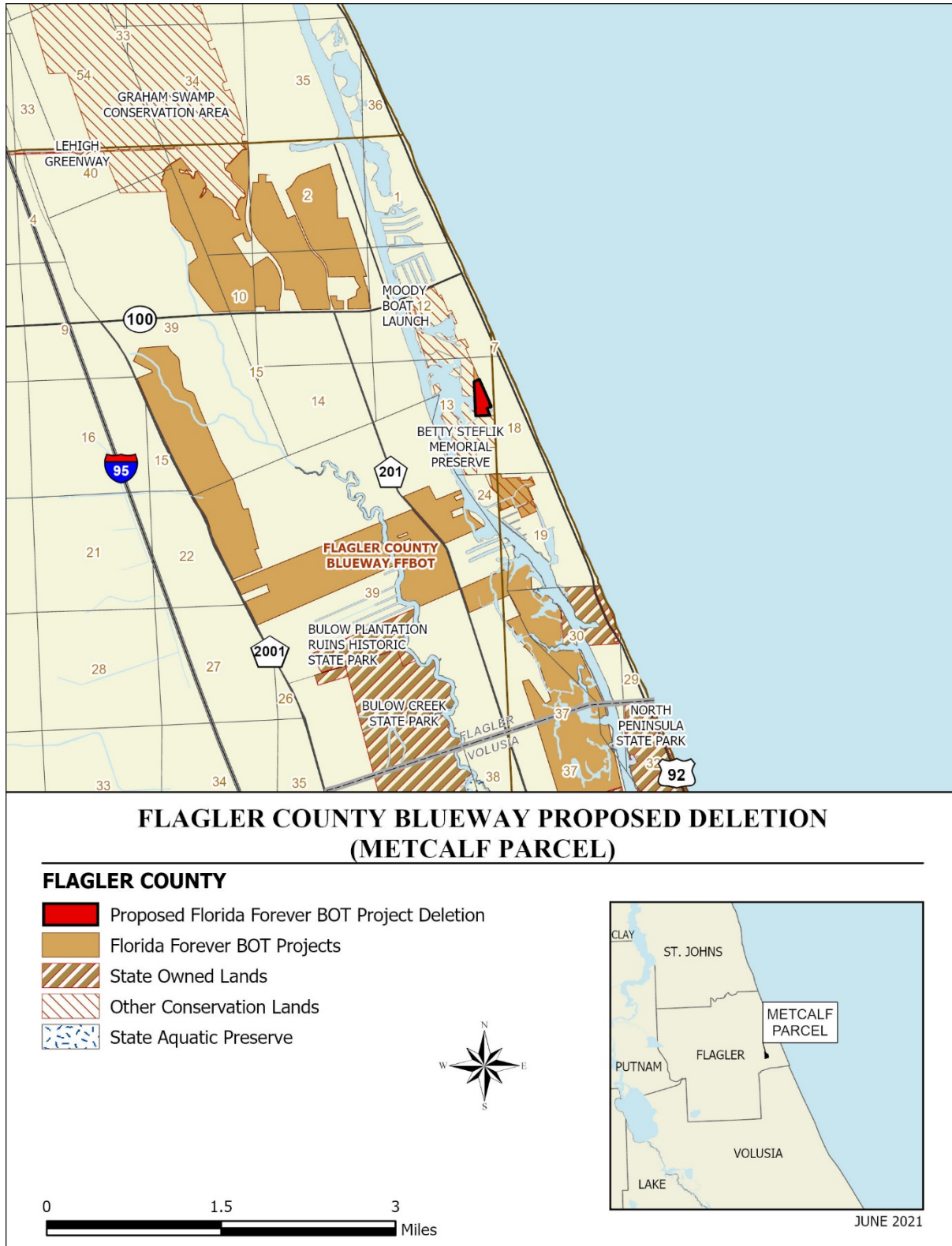
**Flagler County Blueway Deletion (Metcalf Parcel): Florida Forever Measure Evaluation 20210615**

GIS ACRES = 19.29

| <b>MEASURES</b>                                  | <b>Resource<br/>Acres<sup>a</sup></b> | <b>% of<br/>parcel</b> |
|--|---------------------------------------|------------------------|
| <b>B1: Strategic Habitat Conservation Areas</b>  |                                       |                        |
| Priority 1                                       | 3.84                                  | 20%                    |
| Priority 2                                       | 0.00                                  | 0%                     |
| Priority 3                                       | 0.39                                  | 2%                     |
| Priority 4                                       | 0.00                                  | 0%                     |
| Priority 5                                       | 0.00                                  | 0%                     |
| Total Acres                                      | 4.23                                  | 22%                    |
| <b>B2: FNAI Habitat Conservation Priorities</b>  |                                       |                        |
| Priority 1                                       | 0.00                                  | 0%                     |
| Priority 2                                       | 0.00                                  | 0%                     |
| Priority 3                                       | 0.00                                  | 0%                     |
| Priority 4                                       | 0.00                                  | 0%                     |
| Priority 5                                       | 0.00                                  | 0%                     |
| Priority 6                                       | 0.00                                  | 0%                     |
| Total Acres                                      | 0.00                                  | 0%                     |
| <b>B3: Ecological Greenways</b>                  |                                       |                        |
| Priority 1                                       | 0.00                                  | 0%                     |
| Priority 2                                       | 0.00                                  | 0%                     |
| Priority 3                                       | 0.00                                  | 0%                     |
| Priority 4                                       | 0.00                                  | 0%                     |
| Priority 5                                       | 18.12                                 | 94%                    |
| Priority 6                                       | 0.00                                  | 0%                     |
| Total Acres                                      | 18.12                                 | 94%                    |
| <b>B4: Under-represented Natural Communities</b> |                                       |                        |
| Upland Glade (G1)                                | 0.00                                  | 0%                     |
| Pine Rockland (G1)                               | 0.00                                  | 0%                     |
| Scrub and Scrubby Flatwoods (G2)                 | 0.00                                  | 0%                     |
| Rockland Hammock (G2)                            | 0.00                                  | 0%                     |
| Dry Prairie (G2)                                 | 0.00                                  | 0%                     |
| Seepage Slope (G2)                               | 0.00                                  | 0%                     |
| Sandhill (G3)                                    | 0.00                                  | 0%                     |
| Sandhill Upland Lake (G3)                        | 0.00                                  | 0%                     |
| Upland Pine (G3)                                 | 0.00                                  | 0%                     |
| Mesic/Wet Flatwoods (G4)                         | 0.00                                  | 0%                     |
| Upland Hardwood Forest (G5)                      | 0.00                                  | 0%                     |
| Total Acres                                      | 0.00                                  | 0%                     |
| <b>B6: Occurrences of FNAI Tracked Species</b>   |                                       |                        |
| G1   | 0                                     |                        |
| G2   | 0                                     |                        |
| G3   | 0                                     |                        |
| G4   | 1                                     |                        |
| G5   | 0                                     |                        |
| Total  | 1                                     |                        |
| <b>C4: Natural Floodplain Function</b>           |                                       |                        |
| Priority 1                                       | 0.00                                  | 0%                     |
| Priority 2                                       | 0.00                                  | 0%                     |
| Priority 3                                       | 0.00                                  | 0%                     |
| Priority 4                                       | 13.07                                 | 68%                    |
| Priority 5                                       | 0.00                                  | 0%                     |
| Priority 6                                       | 0.00                                  | 0%                     |
| Total Acres                                      | 13.07                                 | 68%                    |

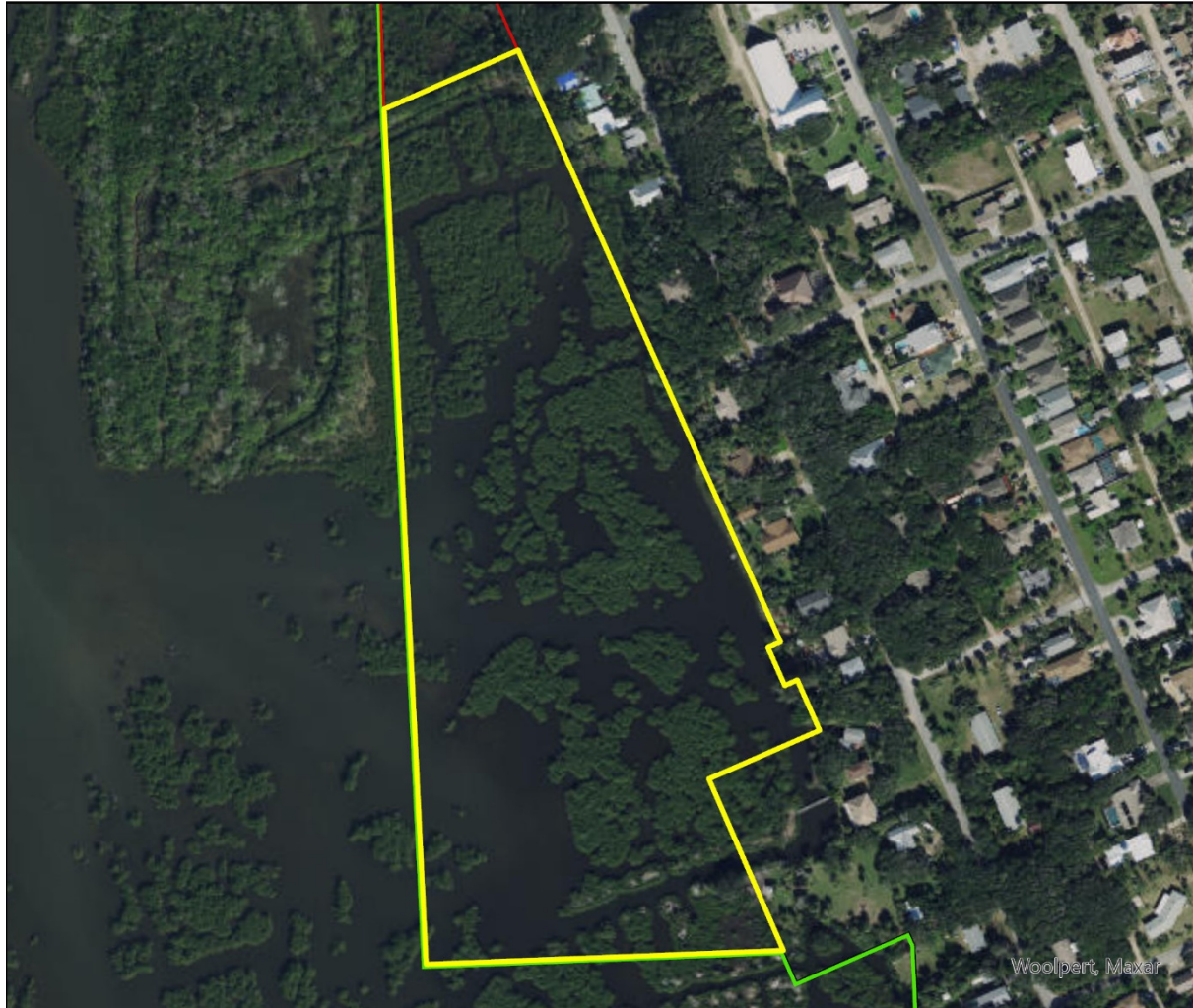
| <b>MEASURES (continued)</b>   | <b>Resource<br/>Acres<sup>a</sup></b> | <b>% of<br/>parcel</b> |
|---|---------------------------------------|------------------------|
| <b>C5: Surface Water Protection</b>   |                                       |                        |
| Priority 1  | 13.29                                 | 69%                    |
| Priority 2  | 0.00                                  | 0%                     |
| Priority 3  | 0.00                                  | 0%                     |
| Priority 4  | 0.00                                  | 0%                     |
| Priority 5  | 0.00                                  | 0%                     |
| Priority 6  | 0.00                                  | 0%                     |
| Priority 7  | 0.00                                  | 0%                     |
| Total Acres   | 13.29                                 | 69%                    |
| <b>C7: Fragile Coastal Resources</b>  |                                       |                        |
| Fragile Coastal Uplands   | 0.00                                  | 0%                     |
| Imperiled Coastal Lakes   | 0.00                                  | 0%                     |
| Coastal Wetlands  | 12.23                                 | 63%                    |
| Total Acres   | 12.23                                 | 63%                    |
| <b>C8: Functional Wetlands</b>  |                                       |                        |
| Priority 1  | 0.00                                  | 0%                     |
| Priority 2  | 0.00                                  | 0%                     |
| Priority 3  | 0.00                                  | 0%                     |
| Priority 4  | 12.29                                 | 64%                    |
| Priority 5  | 0.00                                  | 0%                     |
| Priority 6  | 0.00                                  | 0%                     |
| Total Acres   | 12.29                                 | 64%                    |
| <b>D3: Aquifer Recharge</b>   |                                       |                        |
| Priority 1  | 0.00                                  | 0%                     |
| Priority 2  | 0.00                                  | 0%                     |
| Priority 3  | 0.00                                  | 0%                     |
| Priority 4  | 0.00                                  | 0%                     |
| Priority 5  | 13.45                                 | 70%                    |
| Priority 6  | 0.00                                  | 0%                     |
| Total Acres   | 13.45                                 | 70%                    |
| <b>E2: Recreational Trails (miles)</b>  |                                       |                        |
| (prioritized trail opportunities from Office of Greenways and Trails & Univ. Florida) |                                       |                        |
| Land Trail Priorities   | 0.4                                   |                        |
| Land Trail Opportunities  | 0.0                                   |                        |
| Total Miles   | 0.4                                   |                        |
| <b>F2: Arch. &amp; Historical Sites (number)</b>                                      |                                       |                        |
|   | 0 sites                               |                        |
| <b>G1: Sustainable Forestry</b>   |                                       |                        |
| Priority 1  | 0.00                                  | 0%                     |
| Priority 2  | 0.00                                  | 0%                     |
| Priority 3  | 0.00                                  | 0%                     |
| Priority 4  | 0.00                                  | 0%                     |
| Priority 5 - Potential Pinelands  | 0.00                                  | 0%                     |
| Total Acres   | 0.00                                  | 0%                     |
| <b>G3: Forestland for Recharge</b>  |                                       |                        |
|   | 0.00                                  | 0%                     |

<sup>a</sup>Acres of each resource in the project and percentage of project represented by each resource are listed except where noted. This analysis converts site boundary into pixels, which causes slight differences from GIS acres; this effect is most noticeable on small sites.



## Flagler County Blueway Proposed Deletion (Metcalf Parcel)

FLORIDA FOREVER BOARD OF TRUSTEES PROJECT PROPOSED DELETION AS OF JUNE 2021



Map Produced by: N. Pasco, June 2021

Background: World Imagery Resolution = 0.3 meter



1018 Thomasville Road  
Suite 200-C  
Tallahassee, Florida 32303  
850-224-8207  
fax 850-681-9364  
www.fnai.org

