

ITEM 7:

Vote on whether to amend the Myakka Ranchlands Florida Forever project boundary to add one parcel totaling approximately 996 acres in Manatee County with a prorated tax assessed market value of \$1,442,968.

LOCATION:

Manatee County

DSL STAFF REMARKS:

The J Bar C Ranch amendment proposed by the Florida Conservation Group, National Wildlife Refuge Association, and Common Ground Ecology, adds a 996-acre portion of 1,572-acre parcel in Manatee County to the Myakka Ranchlands Florida Forever project. The property has a prorated tax assessed value of \$1,442,968.

The property is proposed for less-than-fee acquisition. The landowner has been contacted and is a willing seller. The J Bar C Ranch lies within an intact rural landscape that creates a conservation corridor between the Myakka and Peace rivers for wide-ranging wildlife species such as the black bear and the Florida panther. The property has been drained and contains a prominent drainage ditch used to drain water from the agricultural irrigation system for the grove operation on the adjacent property. The Southwest Florida Water Management District requires maintenance to be conducted on the ditch. Lands adjacent to the ditch and throughout the proposal are dominated by improved pasture and contain patches of remnant pine flatwoods, successional mixed hardwoods, and isolated wetlands.

The proposal meets the Florida Forever criteria to be submitted as a boundary amendment. The parcel is less than 1,000 acres, has a tax assessed value of less than \$2 million, and is less than 10% of the size of the overall project to which it is being proposed for addition.

Project History:

The Myakka Ranchlands project in DeSoto, Manatee, and Sarasota counties was approved by the Acquisition and Restoration Council in 2007. The project aims to protect a landscape-size area in the Myakka River and Charlotte Harbor watershed by creating system of conservation areas in southwest Florida. The project will provide habitat and conservation corridor connectivity for rare wildlife species such as the Eastern indigo snake, Florida black bear, and Florida panther, protect critical wetlands, and provide enhanced watershed and water quality protection.

The Myakka Ranchlands project includes 47,414 acres with 30,573 acres remaining, and is ranked fifth in the Less-than-Fee category on the 2021 Florida Forever Priority List. The tax assessed value of the remaining acres to be acquired in this project per property appraiser information (2019) is \$152,903,490.

FNAI Review:

According to the Florida Natural Areas Inventory (FNAI), 100% of the J Bar C Ranch property contributes to Ecological Greenways (Priority 3), Surface Water Protection, and Aquifer Recharge. The site also contributes to FNAI Habitat Conservation Priorities (75%) and Natural Floodplain Function (75%).

STAFF RECOMMENDATION:

Vote on the proposed boundary amendment.

ARC RECOMMENDATION:

Project	DHR	FFS	Lynetta Griner	FWC	Bill Palmer	Elva Peppers	DEP	Selected
Myakka Ranchlands: J Bar C Ranch								



To: Deborah Burr, DEP/OES
 From: Dale R. Jackson, FNAI
 Date: May 21, 2021
 Subject: Proposed boundary modification (addition) to Florida Forever BOT
 Project: **Myakka Ranchlands** – J Bar C Ranch, Manatee County

The major goal of the Myakka Ranchlands Florida Forever (FF) Project is to help build a landscape size protection area of more than 50,000 acres by adding to the existing 121,000 acres of conservation land already protecting the Myakka River and Charlotte Harbor Estuary. It would protect populations of rare plants and animals as well as state waters and functional wetlands.

The proposed addition includes 996 acres (992 GIS acres) in southeastern-most Manatee County bordering DeSoto County on the east and Sarasota County on the south. Portions of the Florida Forever project lie 0.5 mile to the southeast and 2 miles to the northwest. The nearest conservation land is Candy Bar Ranch Agricultural and Conservation Easement, located ca. 1 mile to the southeast, but several others are within 5 miles, mostly to the west. The property is proposed for less-than-fee-simple protection offered by a willing seller.

This is a low-relief site (mostly 35–50 feet elevation) that originally supported a mosaic of wetlands (many ephemeral) and probably mesic/wet flatwoods within a large slough system. Wetlands have been altered and partly drained by miles of canals (including a large central one draining much of the site) and possibly pumping from wells, as well as potentially degraded by cattle use. The proposal classifies some of the remaining wetland habitats as wet prairie and ephemeral marsh. Most (411 acres per proposal) of the “uplands” have been converted to improved pasture. Within these pastures are second-growth disturbed woodlands and scattered trees that include mixed hardwoods, cabbage palm, and slash pine.

The FNAI database contains no records of rare species on site; however a few have been documented in the past on nearby lands (e.g., crested caracara, eastern indigo snake, Florida black bear, lowland loosestrife). Focused field surveys may document these and others making use of the site.

The Florida Forever Measures Evaluation (FFME) at the end of this memo is based on the Florida Forever Conservation Needs Assessment developed by FNAI. The data used in that analysis represent a standardized, statewide perspective of natural community distributions based primarily on data from the Cooperative Land Cover Map. The proposed addition contributes substantially (by percent of site, not necessarily total acreage) to protection of Ecological Greenways, Surface Water Protection, Aquifer Recharge, and Natural Floodplain Protection. Functional Wetlands comprise 32% (319 acres) of the site.

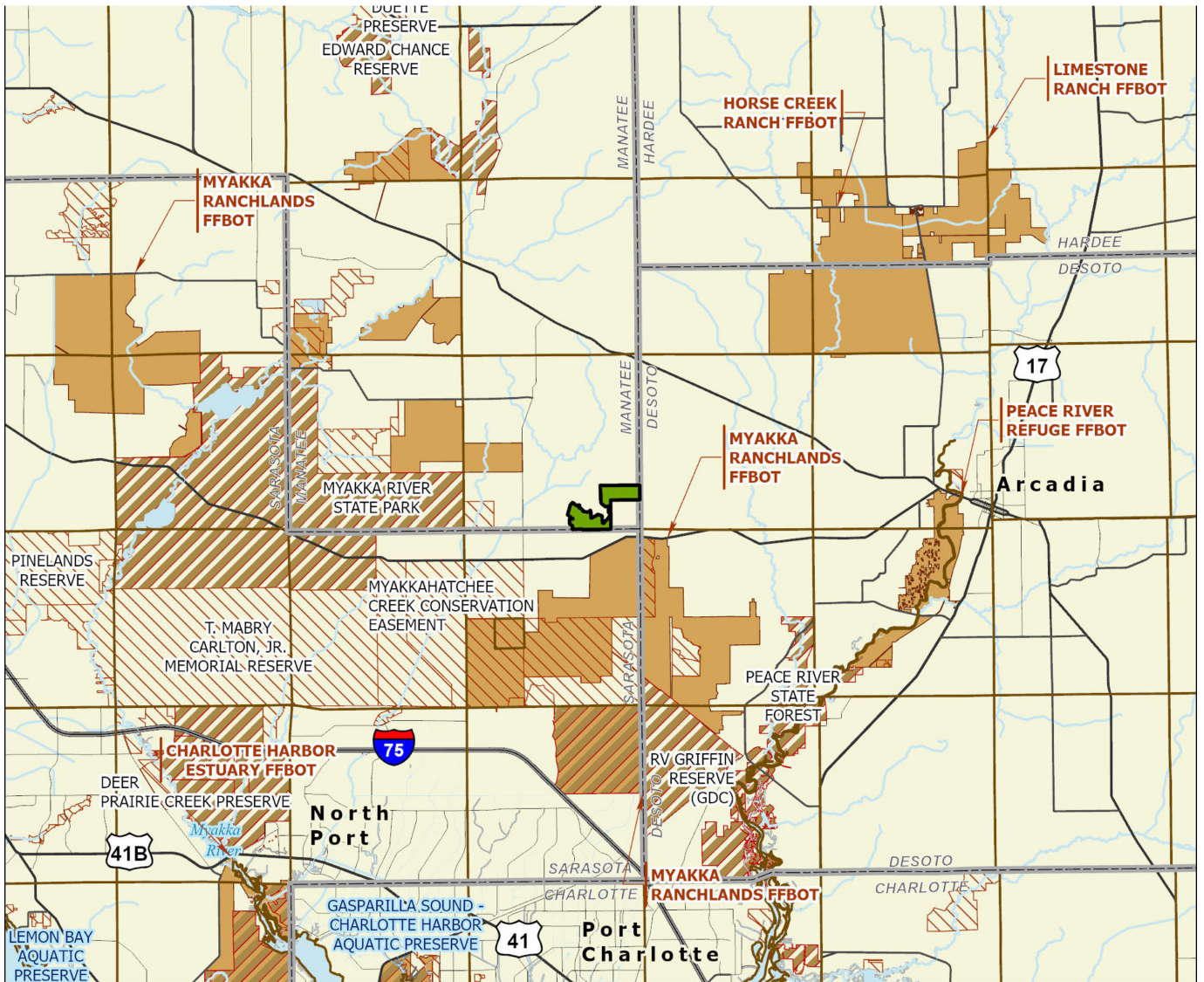
Myakka Ranchlands Addition (J Bar C Ranch): Florida Forever Measure Evaluation 20210506

GIS ACRES = 992

MEASURES	Resource Acres ^a	% of project
B1: Strategic Habitat Conservation Areas		
Priority 1	11	1%
Priority 2	0	0%
Priority 3	0	0%
Priority 4	0	0%
Priority 5	93	9%
Total Acres	103	10%
B2: FNAI Habitat Conservation Priorities		
Priority 1	0	0%
Priority 2	0	0%
Priority 3	0	0%
Priority 4	60	6%
Priority 5	666	67%
Priority 6	15	2%
Total Acres	741	75%
B3: Ecological Greenways		
Priority 1	0	0%
Priority 2	0	0%
Priority 3	991	100%
Priority 4	0	0%
Priority 5	0	0%
Priority 6	0	0%
Total Acres	991	100%
B4: Under-represented Natural Communities		
Upland Glade (G1)	0	0%
Pine Rockland (G1)	0	0%
Scrub and Scrubby Flatwoods (G2)	0	0%
Rockland Hammock (G2)	0	0%
Dry Prairie (G2)	0	0%
Seepage Slope (G2)	0	0%
Sandhill (G3)	0	0%
Sandhill Upland Lake (G3)	0	0%
Upland Pine (G3)	0	0%
Mesic/Wet Flatwoods (G4)	0	0%
Upland Hardwood Forest (G5)	0	0%
Total Acres	0	0%
B6: Occurrences of FNAI Tracked Species		
G1	0	
G2	0	
G3	0	
G4	0	
G5	0	
Total	0	
C4: Natural Floodplain Function		
Priority 1	0	0%
Priority 2	61	6%
Priority 3	239	24%
Priority 4	236	24%
Priority 5	204	21%
Priority 6	6	< 1%
Total Acres	746	75%

MEASURES (continued)	Resource Acres ^a	% of project
C5: Surface Water Protection		
Priority 1	0	0%
Priority 2	1	< 1%
Priority 3	945	95%
Priority 4	15	2%
Priority 5	31	3%
Priority 6	0	0%
Priority 7	0	0%
Total Acres	992	100%
C7: Fragile Coastal Resources		
Fragile Coastal Uplands	0	0%
Imperiled Coastal Lakes	0	0%
Coastal Wetlands	0	0%
Total Acres	0	0%
C8: Functional Wetlands		
Priority 1	0	0%
Priority 2	60	6%
Priority 3	168	17%
Priority 4	54	5%
Priority 5	37	4%
Priority 6	0	0%
Total Acres	319	32%
D3: Aquifer Recharge		
Priority 1	0	0%
Priority 2	0	0%
Priority 3	0	0%
Priority 4	888	90%
Priority 5	104	10%
Priority 6	0	0%
Total Acres	992	100%
E2: Recreational Trails (miles) <small>(prioritized trail opportunities from Office of Greenways and Trails & Univ. Florida)</small>		
Land Trail Priorities	0.0	
Land Trail Opportunities	0.0	
Total Miles	0.0	
F2: Arch. & Historical Sites (number)		
	0 sites	
G1: Sustainable Forestry		
Priority 1	0	0%
Priority 2	0	0%
Priority 3	0	0%
Priority 4	0	0%
Priority 5 - Potential Pinelands	430	43%
Total Acres	430	43%
G3: Forestland for Recharge		
	0	0%

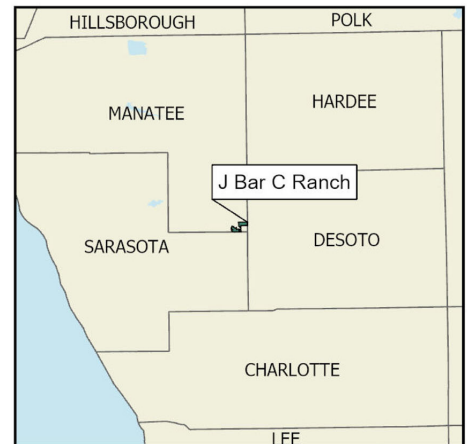
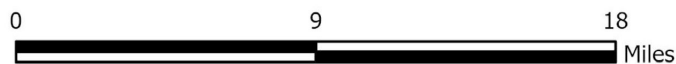
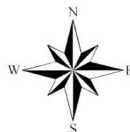
^aAcres of each resource in the project and percentage of project represented by each resource are listed except where noted. This analysis converts site boundary into pixels, which causes slight differences from GIS acres; this effect is most noticeable on small sites.



MYAKKA RANCHLANDS PROPOSED ADDITION (J BAR C RANCH)

MANATEE COUNTY

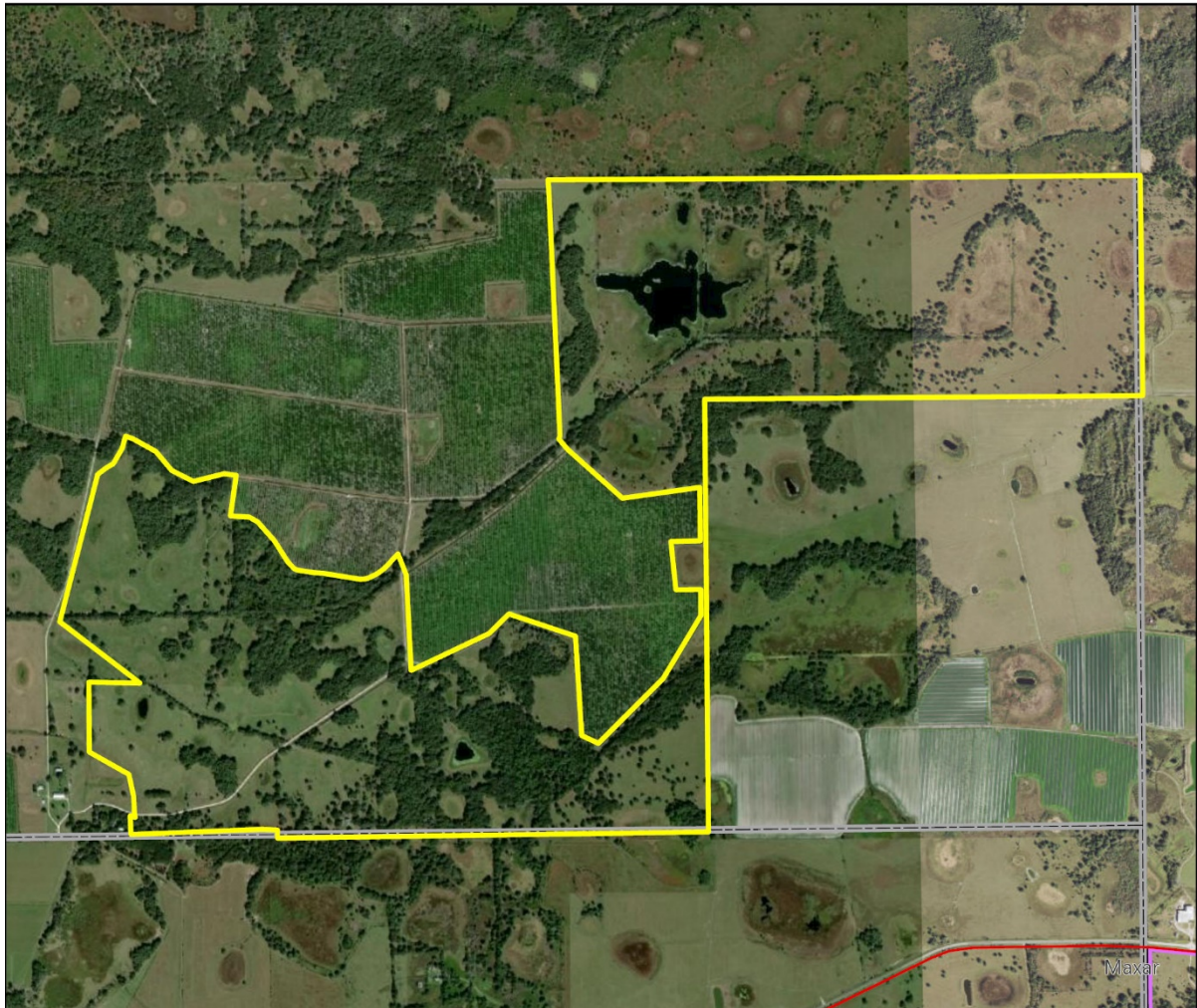
-  Proposed Florida Forever BOT Project Addition
-  Florida Forever BOT Projects
-  State Owned Lands
-  Other Conservation Lands
-  State Aquatic Preserve



JULY 2021

Myakka Ranchlands Proposed Addition (J Bar C Ranch)

FLORIDA FOREVER BOARD OF TRUSTEES PROJECT PROPOSED ADDITION AS OF MAY 2021

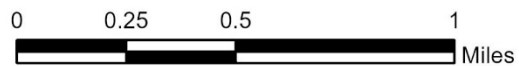


Map Produced by: N. Pasco, May 2021

Background: World Imagery Resolution = 0.3 meter



1018 Thomasville Road
Suite 200-C
Tallahassee, Florida 32303
850-224-8207
fax 850-681-9364
www.fnai.org



Tracking Florida's Biodiversity