

**ITEM 9:**

Vote on whether to amend the Strategic Managed Area Lands List Florida Forever Project Boundary for the FFS to add one parcel totaling approximately 40 acres in Santa Rosa County with a tax assessed market value of \$216,000.

**LOCATION:**

Santa Rosa County

**DSL STAFF REMARKS:**

The McCall Property amendment proposed by the Florida Forest Service (FFS) adds one parcel in Santa Rosa County, totaling approximately 40 acres, to the Strategic Managed Area Lands List (SMALL) Florida Forever project. The property is owned by Dehryl R. McCall, Jr. The parcel has a tax assessed value of \$216,000. The property is proposed for fee simple acquisition and would be managed by the FFS as part of Blackwater River State Forest (BRSF).

The property was likely upland pine but was converted to pine plantation and harvested. That property is now dominated by loblolly pine that has naturally regenerated and is approaching merchantable size. Approximately four acres of upland pine is also present along with depression marsh, baygall and floodplain forest. The property the property may provide potential habitat for nearby populations of red-cockaded woodpeckers (*Picoides borealis*) on BRSF. The property is identified as Priority 5 in the Florida Ecological Greenways Network.

FFS states that adding the McCall property to BRSF would reduce the potential for future conservation land management conflicts, create a more manageable ecosystem in a highly sensitive environmental area, provide additional protections for threatened and endangered flora and fauna, increase forest management efficiency allowing for management as a continuous landscape, and enable additional protections for water quality and native habitats.

According to the SMALL Florida Forever project, "Once a strategic parcel is acquired or recommended by the identifying agency for removal from the project, the agency may submit a boundary amendment application to add another parcel in its place. This will ensure that no more than 60 ownerships/parcels are included in the project." FFS currently has seven parcels out of 15 available slots in this project.

*Boundary Amendment Criteria:*

The proposal meets the criteria to be submitted as a boundary amendment. The parcels total less than 1,000 acres, have a tax assessed value of less than \$2 million, and are less than 10% of the size of the overall project to which it is being added. The proposal area should be designated as essential.

*Project History:*

ARC approved the SMALL project in October 2018 to enhance or facilitate management of properties under public ownership. The project was sponsored by the Division of Recreation and Parks, the Office of Greenways and Trails, the FFS, and the Fish and Wildlife Conservation Commission. The parcels included have been identified as part of the optimum management boundary within the approved management plans of the respective managed area. None of these parcels are located within the boundary of another Florida Forever project on the priority list. In August 2021, ARC approved a modification to include the Office of Resilience and Coastal

Protection and increase the number of ownerships within the project from 10 to 15 for each agency.

The SMALL project includes 11,844 acres with 11,518 acres remaining to be acquired and is ranked number eight in the Critical Natural Lands category on the 2022 Florida Forever Priority List. The tax assessed value for the remaining acres to be acquired in this project per property appraiser information (2020) is \$53,15,920.

*FNAI Review:*

According to the Florida Natural Areas Inventory (FNAI) Florida Forever Measures Evaluation, the proposed property contributes substantially to Strategic Habitat Conservation Areas (100%), Ecological Greenways (100%), Surface Water Protection (100%), Aquifer Recharge (100%), and Sustainable Forestry (97%).

**STAFF RECOMMENDATION:**

Vote on the proposed boundary amendment.

**ARC RECOMMENDATION:**

<b>Project</b>	<b>DHR</b>	<b>FFS</b>	<b>Lynetta Griner</b>	<b>DEP</b>	<b>FWC</b>	<b>Bill Palmer</b>	<b>Elva Peppers</b>	<b>Selected</b>
Strategic Managed Area Lands List: McCall Property								



TO: Sine Murray, DEP/OES  
FROM: Geoffrey Parks, FNAI  
DATE: January 11, 2023  
SUBJECT: Proposed boundary amendment (addition) to the Strategic Managed Areas Lands List Florida Forever BOT project

The major goals of the Strategic Managed Areas Lands List Florida Forever (FF) Project are to enhance protection of natural resources on existing public lands and to facilitate their management. The proposed 40.46-acre McCall addition to Blackwater River State Forest (BRSF) in Santa Rosa County is intended to meet these goals. The property is a square inholding surrounded on all sides by Blackwater River State Forest. The property is proposed for fee-simple acquisition.

The parcel is traversed by an unpaved road and lies about 200 feet south of Goodson Creek. An unnamed drainage flows from southwest to northeast through the property, dividing the southeastern corner from the rest of the tract. Most of the property was likely historically upland pine; aerial photos suggest that at some point it was converted to pine plantation and was clearcut around 2011. It appears to have naturally regenerated since, and probably resembles upland pine in some aspects but is likely dominated by old-field successional species. A small area of floodplain forest surrounding the drainage appears not to have been logged in recent decades.

The FNAI database contains no records of rare species on the site, although the BRSF population of red-cockaded woodpecker (*Dryobates borealis*, G3, S2, E(PT), FE) is in the very close vicinity.

The Florida Forever Measures Evaluation (FFME) following this memo is based on the Florida Forever Conservation Needs Assessment developed by FNAI. The data used in that analysis represent a standardized, statewide perspective of natural community distributions based primarily on data from the Cooperative Land Cover Map. The entirety of the proposed addition contributes to Strategic Habitat Conservation Priorities (Priority 5), Ecological Greenways (Priority 5), Surface Water Protection (mostly Priority 2), and Aquifer Recharge (Priority 5), and nearly all the property (97%) contributes to Sustainable Forestry. Smaller contributions (<10%) are to FNAI Habitat Conservation Priorities and Under-represented Natural Communities (upland pine

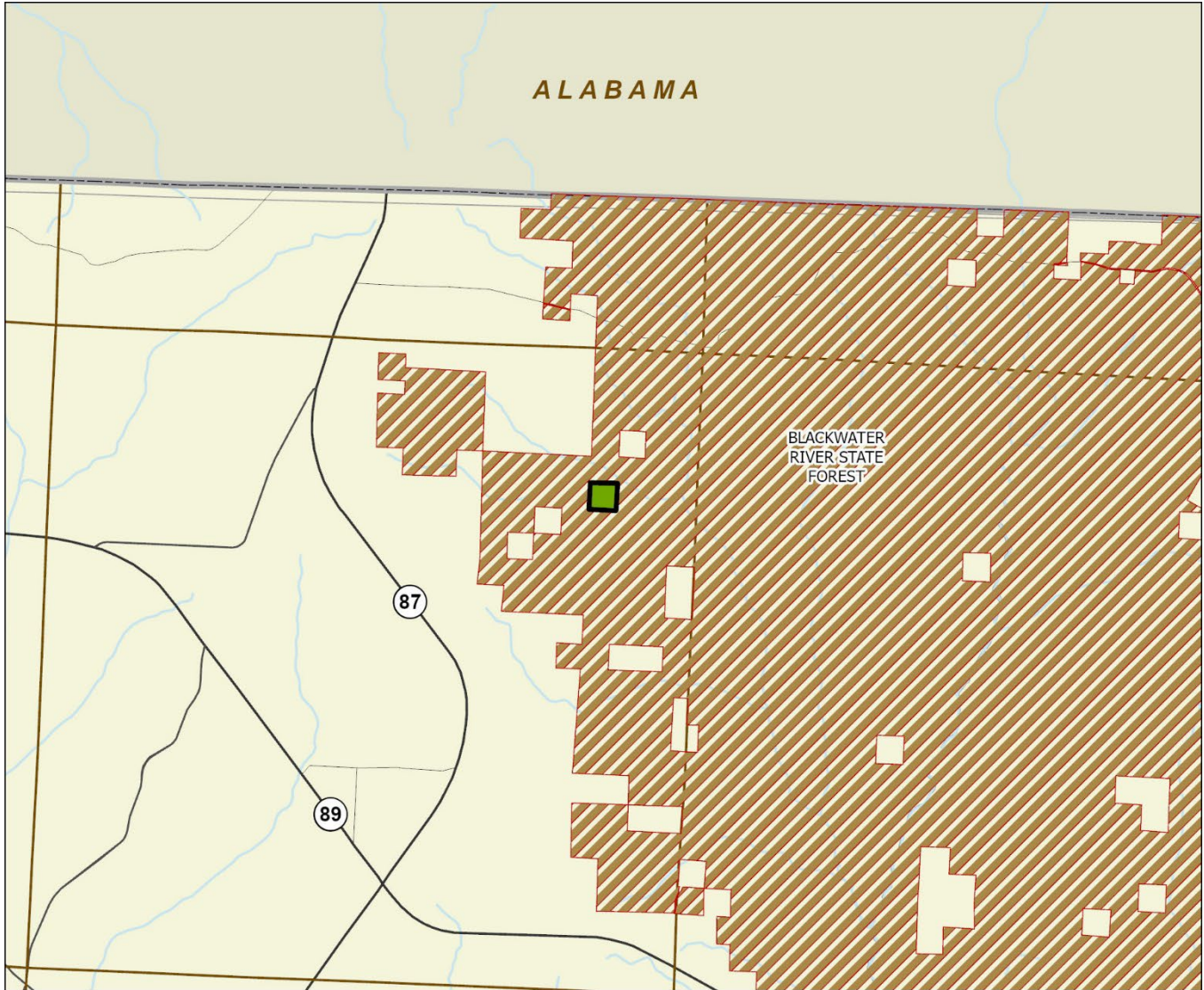
Strategic Managed Area Lands List Addition (BRSF - McCall): Florida Forever Measure Evaluation 20230109

GIS ACRES = 40.46

MEASURES	Resource Acres <sup>a</sup>	% of project
<b>B1: Strategic Habitat Conservation Areas</b>		
Priority 1	0.00	0%
Priority 2	0.00	0%
Priority 3	0.00	0%
Priority 4	0.00	0%
Priority 5	40.59	100%
<b>Total Acres</b>	<b>40.59</b>	<b>100%</b>
<b>B2: FNAI Habitat Conservation Priorities</b>		
Priority 1	0.00	0%
Priority 2	0.00	0%
Priority 3	0.00	0%
Priority 4	0.00	0%
Priority 5	0.00	0%
Priority 6	4.23	10%
<b>Total Acres</b>	<b>4.23</b>	<b>10%</b>
<b>B3: Ecological Greenways</b>		
Priority 1	1.89	5%
Priority 2	0.00	0%
Priority 3	0.00	0%
Priority 4	0.00	0%
Priority 5	38.75	95%
<b>Total Acres</b>	<b>40.64</b>	<b>100%</b>
<b>B4: Under-represented Natural Communities</b>		
Upland Glade (G1)	0.00	0%
Pine Rockland (G1)	0.00	0%
Scrub and Scrubby Flatwoods (G2)	0.00	0%
Rockland Hammock (G2)	0.00	0%
Dry Prairie (G2)	0.00	0%
Seepage Slope (G2)	0.00	0%
Sandhill (G3)	0.00	0%
Sandhill Upland Lake (G3)	0.00	0%
Upland Pine (G3)	3.83	9%
Mesic/Wet Flatwoods (G4)	0.00	0%
Upland Hardwood Forest (G5)	0.00	0%
<b>Total Acres</b>	<b>3.83</b>	<b>9%</b>
<b>B6: Occurrences of FNAI Tracked Species</b>		
G1	0	
G2	0	
G3	0	
G4	0	
G5	0	
<b>Total</b>	<b>0</b>	
<b>C4: Natural Floodplain Function</b>		
Priority 1	0.00	0%
Priority 2	0.00	0%
Priority 3	0.00	0%
Priority 4	0.00	0%
Priority 5	0.00	0%
Priority 6	0.00	0%
<b>Total Acres</b>	<b>0.00</b>	<b>0%</b>

MEASURES (continued)	Resource Acres <sup>a</sup>	% of project
<b>C5: Surface Water Protection</b>		
Priority 1	0.00	0%
Priority 2	25.07	62%
Priority 3	0.00	0%
Priority 4	15.57	38%
Priority 5	0.00	0%
Priority 6	0.00	0%
Priority 7	0.00	0%
<b>Total Acres</b>	<b>40.64</b>	<b>100%</b>
<b>C7: Fragile Coastal Resources</b>		
Fragile Coastal Uplands	0.00	0%
Imperiled Coastal Lakes	0.00	0%
Coastal Wetlands	0.00	0%
<b>Total Acres</b>	<b>0.00</b>	<b>0%</b>
<b>C8: Functional Wetlands</b>		
Priority 1	0.00	0%
Priority 2	0.00	0%
Priority 3	0.00	0%
Priority 4	0.00	0%
Priority 5	0.00	0%
Priority 6	0.00	0%
<b>Total Acres</b>	<b>0.06</b>	<b>0%</b>
<b>D3: Aquifer Recharge</b>		
Priority 1	0.00	0%
Priority 2	0.00	0%
Priority 3	0.00	0%
Priority 4	0.00	0%
Priority 5	0.00	0%
Priority 6	40.64	100%
<b>Total Acres</b>	<b>40.64</b>	<b>100%</b>
<b>E2: Recreational Trails (miles)</b>		
<i>(prioritized trail opportunities from Office of Greenways and Trails &amp; Univ. Florida)</i>		
Land Trail Priorities	0.0	
Land Trail Opportunities	0.0	
<b>Total Miles</b>	<b>0.0</b>	
<b>F2: Arch. &amp; Historical Sites (number)</b>		
		1 sites
<b>G1: Sustainable Forestry</b>		
Priority 1	0.00	0%
Priority 2	0.00	0%
Priority 3	39.47	97%
Priority 4	0.00	0%
Priority 5 - Potential Pinelands	0.00	0%
<b>Total Acres</b>	<b>39.47</b>	<b>97%</b>
<b>G3: Forestland for Recharge</b>	0.00	0%

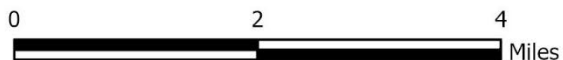
<sup>a</sup>Acres of each resource in the project and percentage of project represented by each resource are listed except where noted. This analysis converts site boundary into pixels, which causes slight differences from GIS acres; this effect is most noticeable on small sites.



### STRATEGIC MANAGED AREA LANDS LIST PROPOSED ADDITION (BLACKWATER RIVER SF)

#### SANTA ROSA COUNTY

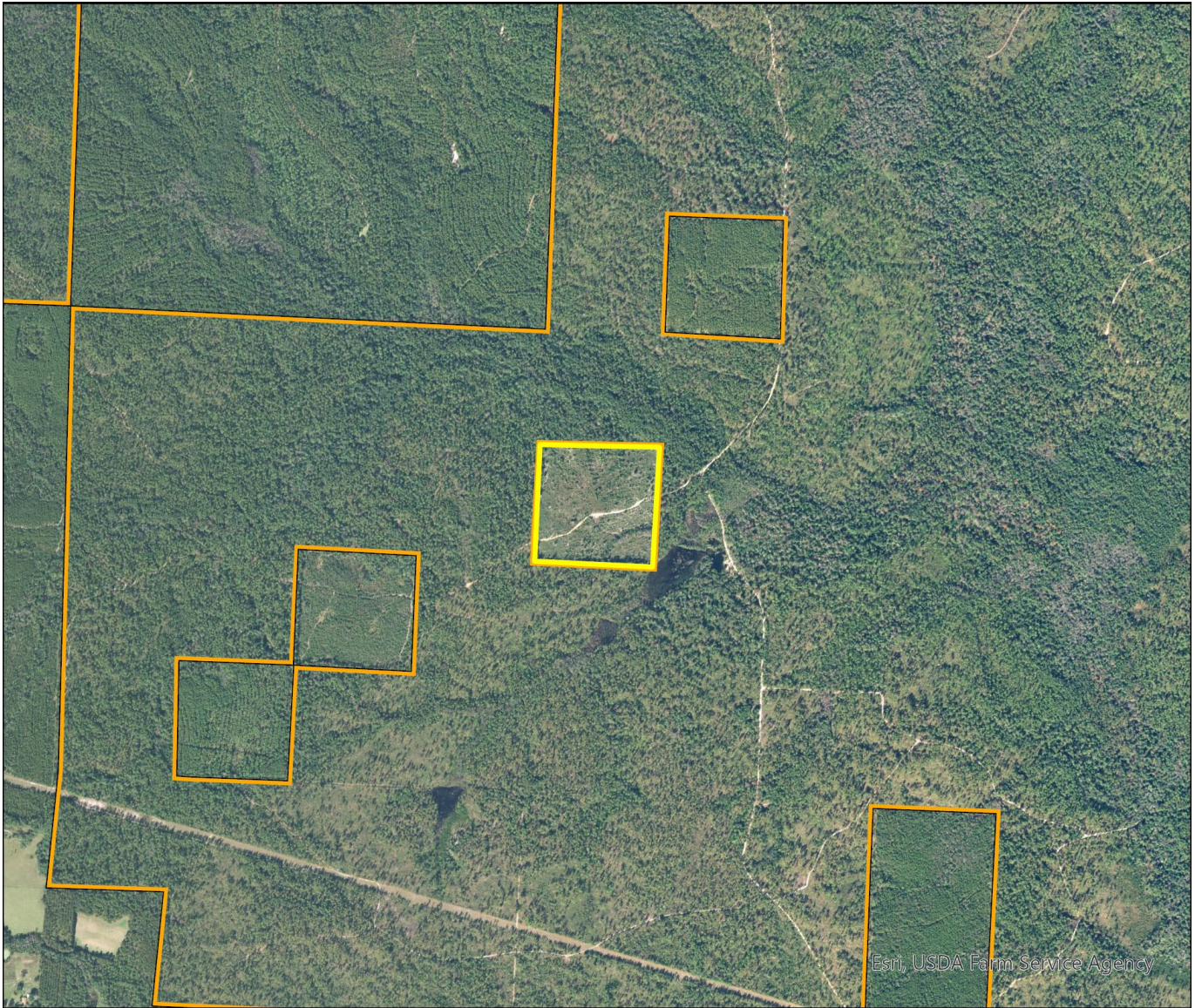
-  Florida Forever Proposed Addition
-  State Owned Lands



MAP BY FL NATURAL AREAS INVENTORY JANUARY 2023

## Strategic Managed Areas Lands List Proposed Addition (Blackwater River State Forest - McCall)

FLORIDA FOREVER BOARD OF TRUSTEES PROJECT PROPOSED ADDITION AS OF JANUARY 2023



Map Produced by: FL Natural Areas Inventory, N. Pasco, January 2023

Background: USA NAIP Imagery Resolution = 1.0 meter

