

ITEM 15:

Vote on whether to amend the Strategic Managed Area Lands List Florida Forever project boundary for the Office of Resilience and Coastal Protection to add five parcels under three ownerships totaling approximately 198.51 acres in Collier County with a tax assessed market value of \$855,313.

LOCATION:

Collier County

DSL STAFF REMARKS:

The amendment proposed by the Office of Resilience and Coastal Protection (ORCP) adds three ownerships totaling approximately 198.51 acres in the Rookery Bay National Estuarine Research Reserve (RBNERR) to the Strategic Managed Area Lands List (SMALL) Florida Forever project. The proposal consists of three parcels owned by Snowblind Inc./Doug Foster, one parcel owned by Construction & Craftworkers Local Union, and one parcel owned by Carl B. Hegner with a total tax assessed market value of \$855,313.

ORCP was recently added as a managing agency to the SMALL project as approved by ARC at the August 13, 2021, meeting. ORCP may collectively with the Office of Greenways and Trails (OGT) include a total of 15 potential ownerships within the SMALL project. OGT currently maintains 10 ownerships. The proposed amendment will place three additional ownerships on the SMALL list for ORCP.

Rookery Bay National Estuarine Research Reserve:

The five parcels are adjacent to the RBNERR and are proposed for fee simple acquisition. The landowners have been contacted. ORCP has confirmed that the properties would be managed as part of the RBNERR. RBNERR is cooperatively managed by ORCP and the National Oceanic and Atmospheric Administration. RBNERR encompasses 110,000 acres of mangrove forest, uplands, and protected waters over much of Collier County.

The Snowblind and Construction & Craftworkers properties are in McIlvane Marsh along the upper end of the mangrove and marsh system. These wetlands are hydrologically important for providing freshwater sheet flow to the McIlvane/Addison Bay system. The wetlands provide habitat for imperiled species such as the American crocodile and Florida panther.

The Hegner property is located on Cape Romano Island and is predominantly a mix of coastal berm and maritime hammock habitat. This area is important habitat for restoring species such as Gerber's spurge and Florida thatch palm. It is also a part of a critical Loggerhead Turtle nesting beach.

The proposal meets the criteria to be submitted as a boundary amendment. The parcels total less than 1,000 acres, have a tax assessed value of less than \$2 million, and are less than 10% of the size of the overall project to which it is being added. The proposal areas should be designated as essential.

Project History:

In October 2018, ARC approved the SMALL project. Sponsored by the DEP Division of Recreation and Parks, the DEP Office of Greenways and Trails, the DACS Florida Forest

Service, and the Florida Fish and Wildlife Conservation Commission, SMALL is a collection of single ownerships statewide that would augment or improve management of existing state-managed conservation lands, if acquired. The parcels included have been identified as part of the optimum management boundary within the approved management plans of the respective managed area. None of these parcels are located within the boundary of another Florida Forever project on the priority list.

The SMALL project includes over 11,898 acres with 11,572 acres remaining and is ranked number eight in the Critical Natural Lands category on the 2021 Florida Forever Priority List. The tax assessed value for the remaining acres to be acquired in this project per property appraiser information (2019) is \$ \$51,010,162.

FNAI Review:

According to the Florida Natural Areas Inventory (FNAI), 100% of the proposed Rookery Bay properties contribute to Ecological Greenways and Aquifer Recharge. The sites also contribute to Surface Water Protection (98%), FNAI Habitat Conservation Priorities (96%), Natural Floodplain Function (95%), Functional Wetlands (93%), and Strategic Habitat Conservation Areas (91%).

STAFF RECOMMENDATION:

Vote on the proposed boundary amendment.

ARC RECOMMENDATION:

Project	DHR	FFS	Lynetta Griner	FWC	Bill Palmer	Elva Peppers	DEP	Selected
Strategic Managed Area Lands List: ORCP - RBNERR								



To: Deborah Burr, DEP/OES
From: Dale R. Jackson, FNAI
Date: September 15, 2021
Subject: Proposed boundary modification (addition) to Florida Forever BOT Project Strategic Managed Areas Lands List (SMALL) – Rookery Bay, Collier County

The major goals of the Strategic Managed Areas Lands List Florida Forever (FF) Project are to enhance protection of natural resources on existing public lands and to facilitate their management. This multi-owner proposed addition to Rookery Bay National Estuarine Research Reserve (RBNERR) in southwestern Collier County is intended to meet these goals.

The boundary amendment proposal, submitted by the Florida Department of Environmental Protection (manager of RBNERR), consists of 198.5 (201 GIS) acres in five parcels under three ownerships. Two slightly disjunct tracts (Snowblind [three parcels] and Construction & Craftworkers Union) are located in Mcllvane Marsh between the Marco Airport and State Road 92. The two ownerships are separated only by property owned by Conservation Collier, which in turn joins them to RBNERR as well as Ten Thousand Islands National Wildlife Refuge. Most of Mcllvane Marsh is publicly owned and cooperatively managed by several public agencies (federal, state, and local). The Hegner parcel (< 1 acre) is located on Cape Romano Island, approximately 4 miles south of Marco Island; the parcel lies between others that are part of RBNERR. The applicant proposes fee simple acquisition of all parcels.

The application describes the Mcllvane Marsh section of the proposal as being located along the upper end of the mangrove and marsh system feeding Mcllvane and Addison bays. The area is principally wetland, largely a mixture of red and white mangroves, buttonwood, and cattail. Remote sensing indicates a small area of mesic/wet flatwoods (7 acres). The application also notes considerable invasion of the area by exotic plant and animal species.

According to the application, the Cape Romano section of the proposal is predominantly a mix of coastal berm and maritime hammock. The plat map shows it as a very narrow strip of land extending across the berm and the beach.

The proposal is within a region designated as habitat of the Florida black bear (*Ursus americanus floridanus*, G5T4/S4, N, N), although the predominance of marsh may limit the species' direct

use of the site. The site also lies within a region considered priority habitat for the Florida panther (*Puma concolor coryi*; G5T1/S1, E, FE). The application notes that the American crocodile (*Crocodylus acutus*, G2/S2, T, FT) has nested in recent years on parcels immediately east and west of the McIlvane Marsh section of the proposal; this represents the northernmost known breeding site for the species. The Cape Romano section of the proposal is located along a beach used for nesting by loggerhead turtles (*Caretta caretta*, G3/S3, T, FT).

The Florida Forever Measures Evaluation (FFME) at the end of this memo is based on the Florida Forever Conservation Needs Assessment developed by FNAI. The data used in that analysis represent a standardized, statewide perspective of natural community distributions based primarily on data from the Cooperative Land Cover Map. The proposed addition contributes substantially (by percent of site, not total acreage) to protection of Ecological Greenways, Surface Water Protection, Natural Floodplain Function, Functional Wetlands, and Aquifer Recharge. The site also scores > 90% for both Strategic Habitat Conservation Areas and FNAI Habitat Conservation Priorities.

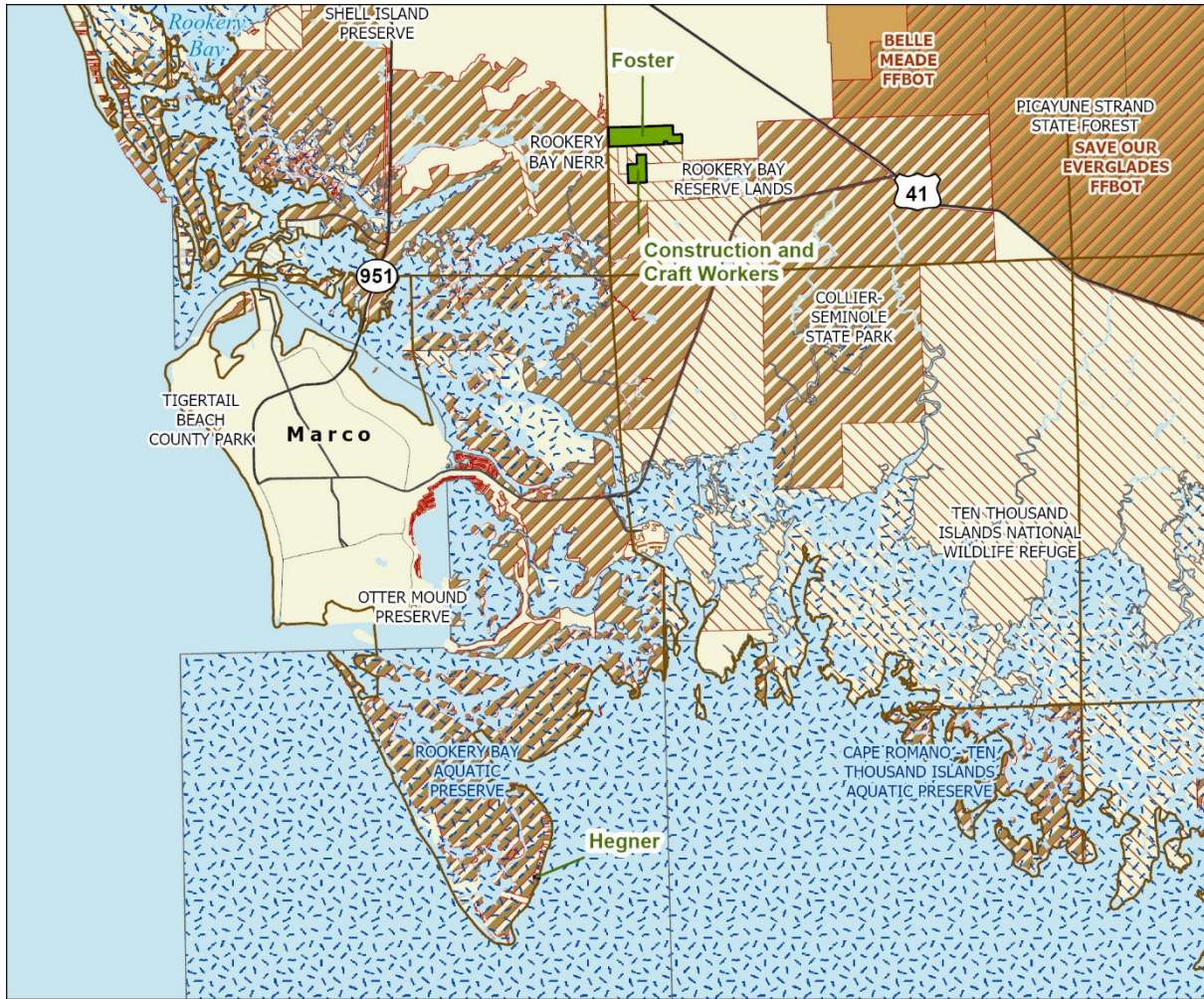
S.M.A.L.L. Addition (ORCP): Florida Forever Measure Evaluation 20210918

GIS ACRES = 201

MEASURES	Resource Acres ^a	% of project
B1: Strategic Habitat Conservation Areas		
Priority 1	0	0%
Priority 2	181	90%
Priority 3	1	< 1%
Priority 4	0	0%
Priority 5	<1	< 1%
Total Acres	182	91%
B2: FNAI Habitat Conservation Priorities		
Priority 1	0	0%
Priority 2	0	0%
Priority 3	0	0%
Priority 4	59	29%
Priority 5	135	67%
Priority 6	0	0%
Total Acres	193	96%
B3: Ecological Greenways		
Priority 1	9	4%
Priority 2	0	0%
Priority 3	0	0%
Priority 4	0	0%
Priority 5	191	95%
Total Acres	201	100%
B4: Under-represented Natural Communities		
Upland Glade (G1)	0	0%
Pine Rockland (G1)	0	0%
Scrub and Scrubby Flatwoods (G2)	0	0%
Rockland Hammock (G2)	0	0%
Dry Prairie (G2)	0	0%
Seepage Slope (G2)	0	0%
Sandhill (G3)	0	0%
Sandhill Upland Lake (G3)	0	0%
Upland Pine (G3)	0	0%
Mesic/Wet Flatwoods (G4)	7	4%
Upland Hardwood Forest (G5)	0	0%
Total Acres	7	4%
B6: Occurrences of FNAI Tracked Species		
G1	0	
G2	0	
G3	0	
G4	1	
G5	0	
Total	1	
C4: Natural Floodplain Function		
Priority 1	0	0%
Priority 2	107	53%
Priority 3	84	42%
Priority 4	0	< 1%
Priority 5	0	0%
Priority 6	0	0%
Total Acres	191	95%

MEASURES (continued)	Resource Acres ^a	% of project
C5: Surface Water Protection		
Priority 1	189	94%
Priority 2	0	0%
Priority 3	0	0%
Priority 4	7	4%
Priority 5	0	0%
Priority 6	0	0%
Priority 7	0	0%
Total Acres	196	98%
C7: Fragile Coastal Resources		
Fragile Coastal Uplands	1	< 1%
Imperiled Coastal Lakes	0	0%
Coastal Wetlands	88	44%
Total Acres	88	44%
C8: Functional Wetlands		
Priority 1	0	0%
Priority 2	106	53%
Priority 3	81	41%
Priority 4	0	0%
Priority 5	0	0%
Priority 6	0	0%
Total Acres	188	93%
D3: Aquifer Recharge		
Priority 1	0	0%
Priority 2	0	0%
Priority 3	0	0%
Priority 4	0	0%
Priority 5	0	0%
Priority 6	201	100%
Total Acres	201	100%
E2: Recreational Trails (miles) <small>(prioritized trail opportunities from Office of Greenways and Trails & Univ. Florida)</small>		
Land Trail Priorities	0	
Land Trail Opportunities	0	
Total Miles	0	
F2: Arch. & Historical Sites (number)		
	0	0 sites
G1: Sustainable Forestry		
Priority 1	0	0%
Priority 2	0	0%
Priority 3	28	14%
Priority 4	0	0%
Priority 5 - Potential Pinelands	5	2%
Total Acres	33	17%
G3: Forestland for Recharge		
	0	0%

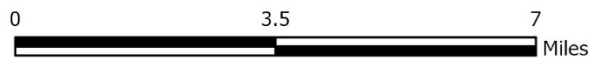
^aAcres of each resource in the project and percentage of project represented by each resource are listed except where noted. This analysis converts site boundary into pixels, which causes slight differences from GIS acres; this effect is most noticeable on small sites.



S.M.A.L.L. PROPOSED ADDITIONS (ORCP)

COLLIER COUNTY

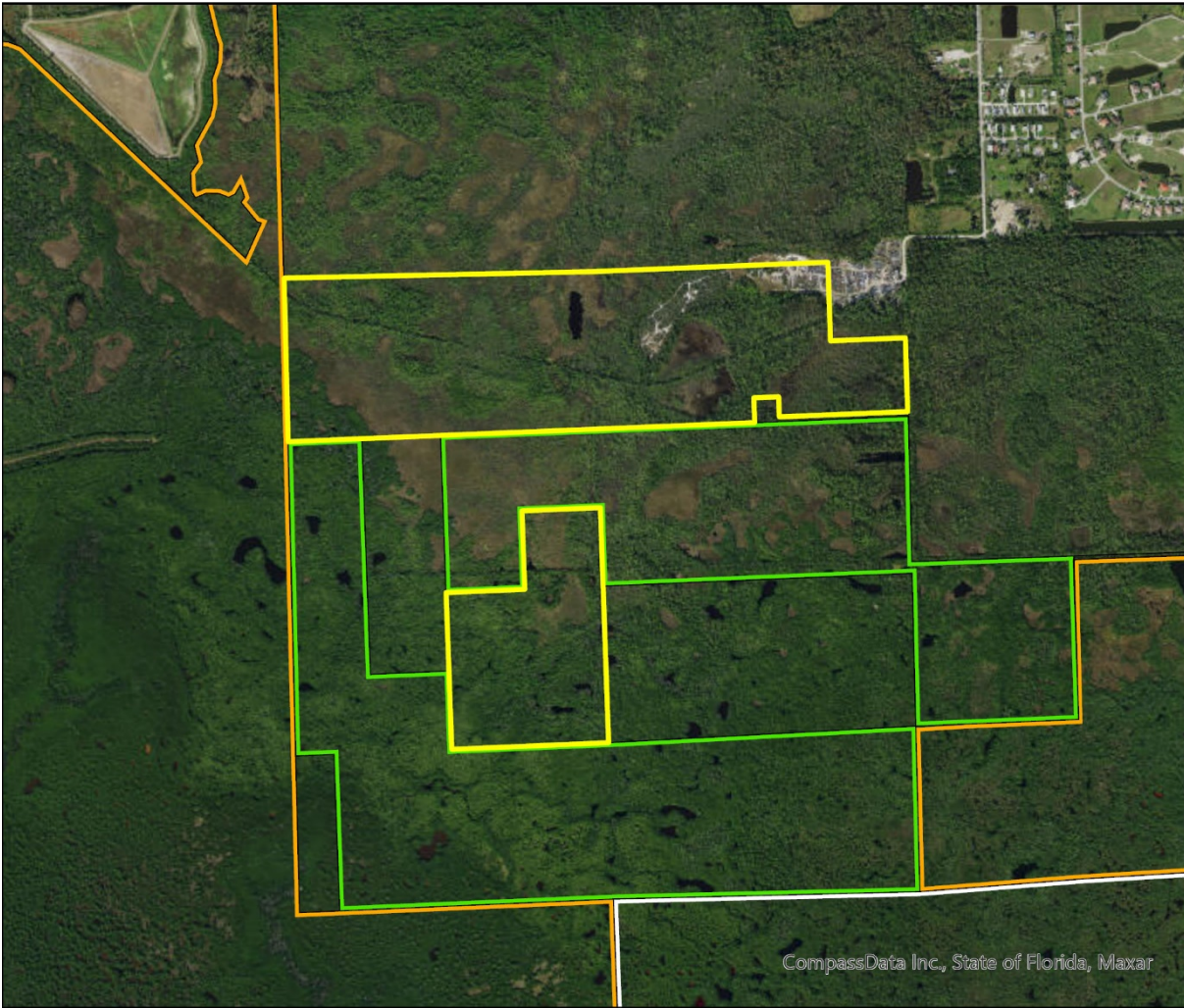
-  Proposed Florida Forever BOT Proposal
-  Florida Forever BOT Projects
-  State Owned Lands
-  Other Conservation Lands
-  State Aquatic Preserve



SEPTEMBER 2021

S.M.A.L.L. Proposed Addition
(Map 1 of 2, Foster Parcels and Construction And Craft Workers Parcel)

FLORIDA FOREVER BOARD OF TRUSTEES PROJECT PROPOSAL BOUNDARY AS OF SEPTEMBER 2021



CompassData Inc., State of Florida, Maxar

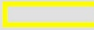

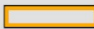
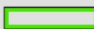
Map Produced by: N. Pasco, September 2021

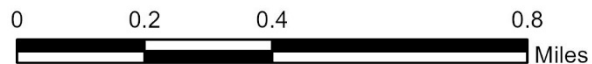
Background: World Imagery Resolution = 0.3 meter



1018 Thomasville Road
Suite 200-C
Tallahassee, Florida 32303
850-224-8207
fax 850-681-9364
www.fnai.org



	Florida Forever Proposal Boundary
	Existing Federal Conservation Lands
	Existing State Conservation Lands
	Existing Local Conservation Lands



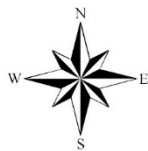
S.M.A.L.L. Proposed Addition (Map 2 of 2, Hegner Parcel)

FLORIDA FOREVER BOARD OF TRUSTEES PROJECT PROPOSAL BOUNDARY AS OF SEPTEMBER 2021



Map Produced by: N. Pasco, August 2021

Background: World Imagery Resolution = 0.3 meter



	Florida Forever Proposal Boundary
	Existing State Conservation Lands

1018 Thomasville Road
Suite 200-C
Tallahassee, Florida 32303
850-224-8207
fax 850-681-9364
www.fnai.org

