

**ITEM 15:**

Vote on whether to amend the Wolfe Creek Forest Florida Forever Project boundary to add three parcels totaling approximately 757 acres in Santa Rosa County with a prorated tax assessed just value of \$1,339,024.

**LOCATION:**

Santa Rosa County

**DSL STAFF REMARKS:**

The Twin Creek Timber amendment proposed by the Trust for Public Land, adds three parcels totaling approximately 757 acres in Santa Rosa County to the Wolfe Creek Forest Florida Forever Project. The three parcels have a combined tax assessed just value of \$1,339,024.

The three parcels adjacent to the existing Wolfe Creek Forest Florida Forever Project are proposed for fee simple acquisition. The landowner, Twin Creek Timber, LLC, has been contacted and is a willing seller. The Twin Creek Timber properties have been used for silviculture and are characterized by a mix of forested uplands and wetlands. The properties are located within a strategic buffer area for NAS Whiting Field and are within FEGN Priority 1. The project has support from the US Department of Agriculture as part of their Forest Legacy Project and referred to as Springwater Blueway Phase and is referred to as the Navy Greenway Tract. If acquired, the Florida Forest Service would manage these properties as part of the Blackwater River State Forest.

The proposal meets the Florida Forever criteria to be submitted as a boundary amendment. The parcels total less than 1,000 acres, have a tax assessed value of less than \$2 million, and are less than 10% of the size of the overall project to which it is being proposed for addition. The proposal area should be designated as essential.

*Project History:*

The Wolfe Creek Forest project in Santa Rosa County was approved by ARC in 2010. The project aims to conserve and protect wildlife species, provide opportunities for public outdoor recreation, support sustainable silvicultural practices and protect the wetlands and tributaries associated with the Blackwater River.

The Wolfe Creek Forest project includes approximately 10,139 acres with 8,687 acres remaining and is ranked 19 in the Critical Natural Lands category on the 2021 Florida Forever Priority List. The tax assessed value of the remaining acres to be acquired in this project per property appraiser information (2019) is \$10,358,199.

*FNAI Review:*

According to the Florida Natural Areas Inventory (FNAI), 100% of the Twin Creek Timber property contributes to Ecological Greenways and Aquifer Recharge. The site also provides significant contributions to Surface Water Protection (96%) Strategic Habitat Conservation Areas (96%), and Sustainable Forestry (98%).

**STAFF RECOMMENDATION:**

Vote on the proposed boundary amendment.

**ARC RECOMMENDATION:**

<b>Project</b>	<b>DHR</b>	<b>FFS</b>	<b>Lynetta Griner</b>	<b>FWC</b>	<b>Bill Palmer</b>	<b>Elva Peppers</b>	<b>DEP</b>	<b>Selected</b>
Wolfe Creek Forest: Twin Creek Timber								



To: Deborah Burr, DEP/OES  
From: Dale R. Jackson, FNAI  
Date: November 10, 2021  
Subject: Proposed Boundary Modification to Florida Forever BOT Project:  
Wolfe Creek Forest – Twin Creeks Timber Tract, Santa Rosa County

Goals of the Wolfe Creek Forest FFBOT project in central Santa Rosa County are to protect wildlife habitat, surface waters, sustainably managed silviculture, archeological sites, opportunities for public recreation, and military overflights. Most of the project's lands (82%) are in various stages of intensively managed pine plantation in areas that historically supported upland pine (clay hills) and sandhill. A variety of wetland communities remain.

The Twin Creeks Timber Tract (757 acres per application; 763 GIS acres) is proposed as an addition to the project. It is bordered by FFBOT project lands and Blackwater River State Forest on the south, east, and half of its northern boundary. The state forest lands are in direct contact with two other FFBOT projects: Coastal Headwaters Longleaf Forest and Clear Creek/Whiting Field. The application notes that the property is offered for fee-simple acquisition, with the Florida Forest Service as willing manager.

Nearly all of the Twin Creeks Timber Tract has been in pine plantation silviculture for some time, with very little remaining natural community characteristics; aerial photography shows about two-thirds of the site as recently cleared, and the remainder supporting plantations of various ages. Wetlands are limited to a few shallow depressions comprising less than two percent of the area. There are no streams present. The tract lies within the West Fork Big Coldwater Creek drainage (nearest point 0.36 mile [ca. 0.6 km] northeast of the site). Topography ranges from 126 ft in the northeast to 204 ft in the west. There is a network of road that access the entire tract. There are no structures evident on the property. The tract offers opportunity for extensive ecological restoration, which is the focus of much of the surrounding former longleaf pine systems.

The FNAI database contains only one record of rare species on site – the Florida black bear (*Ursus americanus floridanus*, G5T4/S4, N, N), based on its being considered common to occasional regionally by the Florida Fish and Wildlife Conservation Commission.

The Florida Forever Measures Evaluation (FFME) at the end of this memo is based on the Florida Forever Conservation Needs Assessment developed by FNAI. The data used in that analysis represent a standardized, statewide perspective of natural community distributions based primarily on data from the Cooperative Land Cover Map. Nearly all of the proposed addition contributes to Surface Water Protection, Aquifer Recharge, Ecological Greenways, and Sustainable Forestry.

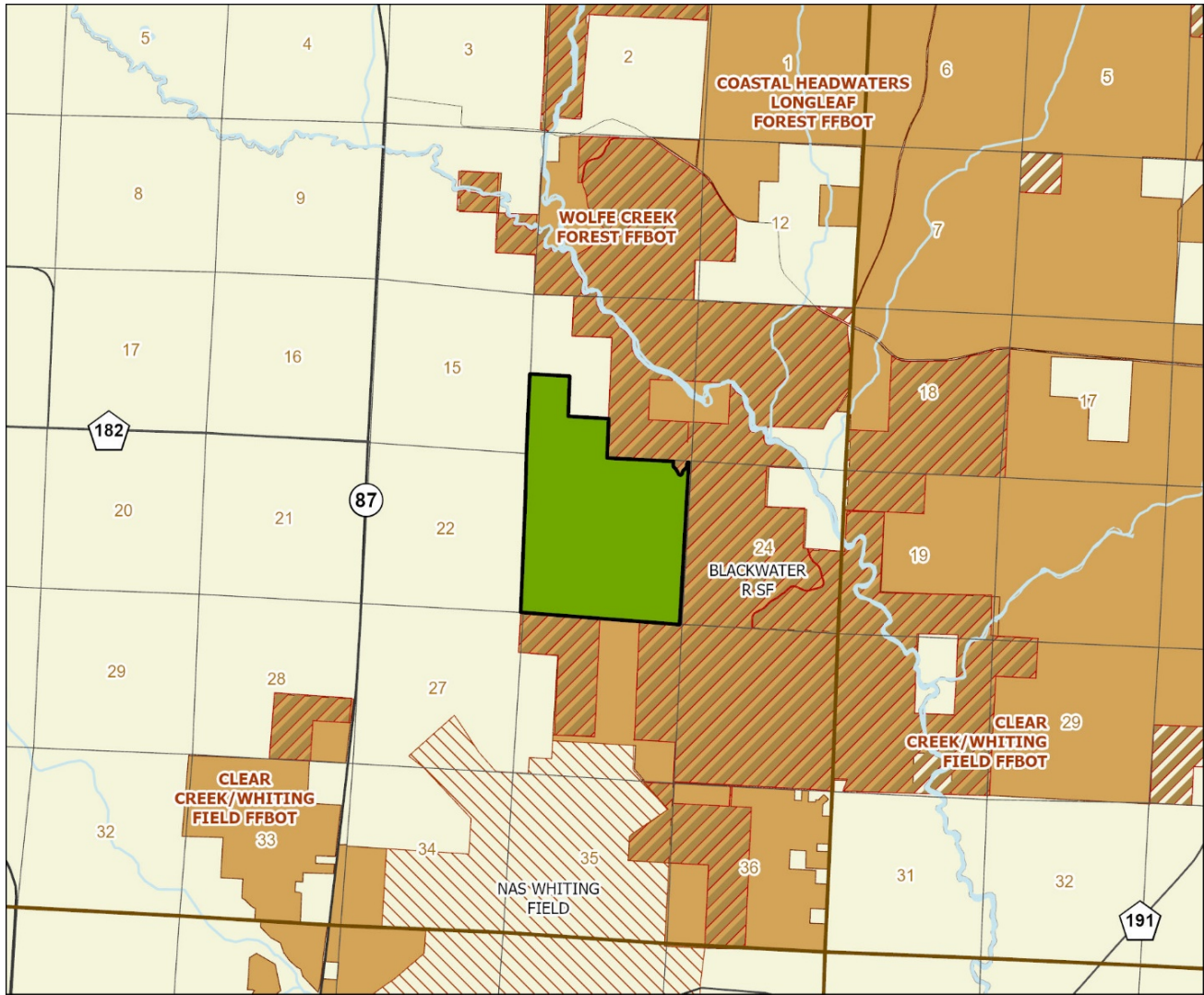
Wolfe Creek Forest (Twin Creek Timber Tract): Florida Forever Measure Evaluation 20211101

GIS ACRES = 763

MEASURES	Resource Acres <sup>a</sup>	% of project
<b>B1: Strategic Habitat Conservation Areas</b>		
Priority 1	0	0%
Priority 2	0	0%
Priority 3	729	96%
Priority 4	0	0%
Priority 5	17	2%
<b>Total Acres</b>	<b>746</b>	<b>98%</b>
<b>B2: FNAI Habitat Conservation Priorities</b>		
Priority 1	0	0%
Priority 2	0	0%
Priority 3	0	0%
Priority 4	0	0%
Priority 5	0	0%
Priority 6	0	0%
<b>Total Acres</b>	<b>0</b>	<b>0%</b>
<b>B3: Ecological Greenways</b>		
Priority 1	763	100%
Priority 2	0	0%
Priority 3	0	0%
Priority 4	0	0%
Priority 5	0	0%
<b>Total Acres</b>	<b>763</b>	<b>100%</b>
<b>B4: Under-represented Natural Communities</b>		
Upland Glade (G1)	0	0%
Pine Rockland (G1)	0	0%
Scrub and Scrubby Flatwoods (G2)	0	0%
Rockland Hammock (G2)	0	0%
Dry Prairie (G2)	0	0%
Seepage Slope (G2)	0	0%
Sandhill (G3)	0	0%
Sandhill Upland Lake (G3)	0	0%
Upland Pine (G3)	0	0%
Mesic/Wet Flatwoods (G4)	0	0%
Upland Hardwood Forest (G5)	0	0%
<b>Total Acres</b>	<b>0</b>	<b>0%</b>
<b>B6: Occurrences of FNAI Tracked Species</b>		
G1	0	
G2	0	
G3	0	
G4	1	
G5	0	
<b>Total</b>	<b>1</b>	
<b>C4: Natural Floodplain Function</b>		
Priority 1	0	0%
Priority 2	0	0%
Priority 3	0	0%
Priority 4	0	0%
Priority 5	0	0%
Priority 6	0	0%
<b>Total Acres</b>	<b>0</b>	<b>0%</b>

MEASURES (continued)	Resource Acres <sup>a</sup>	% of project
<b>C5: Surface Water Protection</b>		
Priority 1	0	0%
Priority 2	0	0%
Priority 3	1	< 1%
Priority 4	488	64%
Priority 5	27	4%
Priority 6	219	29%
Priority 7	0	0%
<b>Total Acres</b>	<b>735</b>	<b>96%</b>
<b>C7: Fragile Coastal Resources</b>		
Fragile Coastal Uplands	0	0%
Imperiled Coastal Lakes	0	0%
Coastal Wetlands	0	0%
<b>Total Acres</b>	<b>0</b>	<b>0%</b>
<b>C8: Functional Wetlands</b>		
Priority 1	0	0%
Priority 2	0	0%
Priority 3	0	0%
Priority 4	0	0%
Priority 5	1	< 1%
Priority 6	0	0%
<b>Total Acres</b>	<b>1</b>	<b>0%</b>
<b>D3: Aquifer Recharge</b>		
Priority 1	0	0%
Priority 2	0	0%
Priority 3	0	0%
Priority 4	0	0%
Priority 5	65	8%
Priority 6	698	92%
<b>Total Acres</b>	<b>763</b>	<b>100%</b>
<b>E2: Recreational Trails (miles)</b> <small>(prioritized trail opportunities from Office of Greenways and Trails &amp; Univ. Florida)</small>		
Land Trail Priorities	0.0	
Land Trail Opportunities	0.0	
<b>Total Miles</b>	<b>0.0</b>	
<b>F2: Arch. &amp; Historical Sites (number)</b> 0 sites		
<b>G1: Sustainable Forestry</b>		
Priority 1	0	0%
Priority 2	0	0%
Priority 3	743	97%
Priority 4	0	0%
Priority 5 - Potential Pinelands	5	< 1%
<b>Total Acres</b>	<b>748</b>	<b>98%</b>
<b>G3: Forestland for Recharge</b>	<b>0</b>	<b>0%</b>

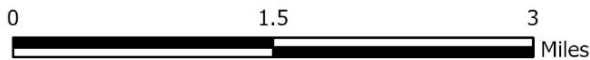
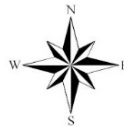
<sup>a</sup>Acres of each resource in the project and percentage of project represented by each resource are listed except where noted. This analysis converts site boundary into pixels, which causes slight differences from GIS acres; this effect is most noticeable on small sites.



**WOLFE CREEK FOREST PROPOSED ADDITION  
(TWIN CREEKS TIMBER TRACT)**

**SANTA ROSA COUNTY**

-  Proposed Florida Forever BOT Project Addition
-  Florida Forever BOT Projects
-  State Owned Lands
-  Other Conservation Lands

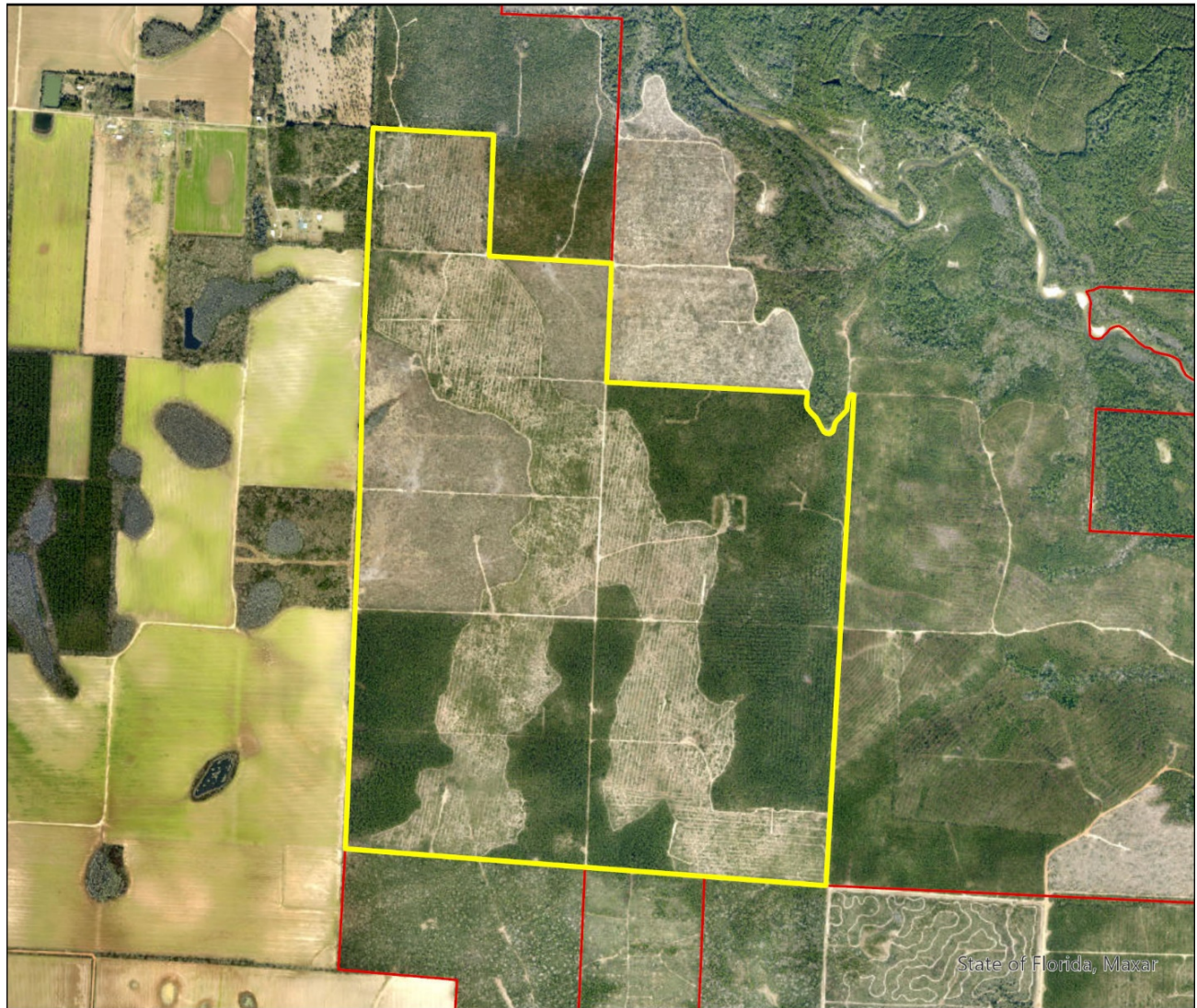


NOVEMBER 2021



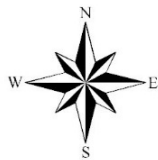
# Wolfe Creek Forest Proposed Addition

FLORIDA FOREVER BOARD OF TRUSTEES PROJECT PROPOSED ADDITION AS OF OCTOBER 2021



Map Produced by: N. Pasco, November 2021

Background: World Imagery Resolution = 0.3 meter



1018 Thomasville Road  
Suite 200-C  
Tallahassee, Florida 32303  
850-224-8207  
fax 850-681-9364  
www.fnai.org

