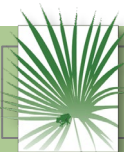
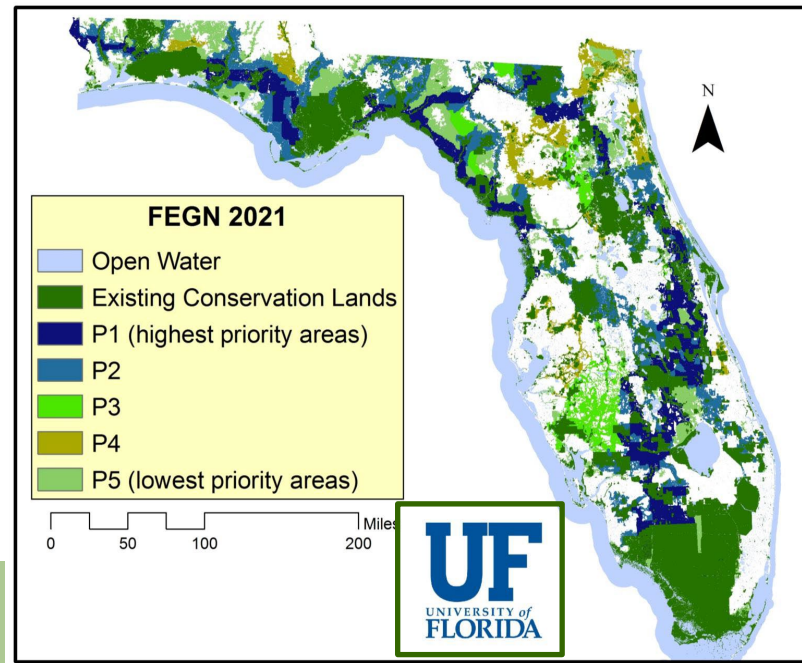


Florida Ecological Greenways Network

2021 Updates

Executive Summary

October 2021



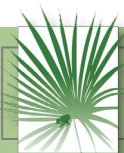
FLORIDA
Natural Areas
INVENTORY



Funded by

FEGN Background

- **1995:** Initial Greenways state legislation – DEP lead state agency, Florida Greenways Coordinating Council established.
- **1998:** First Florida Ecological Greenways Network Model completed – Tom Hctor, UF
- **2001:** FEGN included in Florida Forever Conservation Needs Assessment.
- **2008:** FEGN included in Critical Lands & Waters Identification Project (CLIP).
- **2010s:** Florida Wildlife Corridor Coalition forms around promoting highest priorities of FEGN
- **2020:** DEP funds latest FEGN update.
- **2021:** Florida Wildlife Corridor funding/legislation



2021 Update Team



Tom Hocht, University of Florida

Developed initial FEGN and subsequent updates



Jon Oetting, Florida Natural Areas Inventory, FSU

Florida Forever Conservation Needs Assessment
CLIP



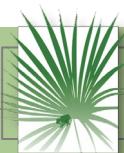
DEP, Division of State Lands

Project funding

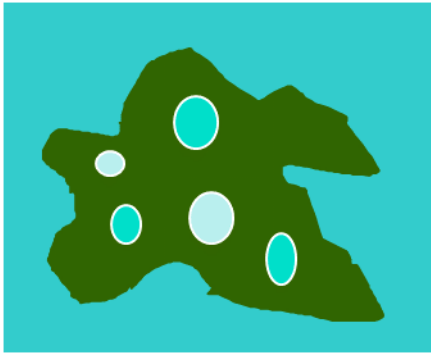


Three Components/Maps

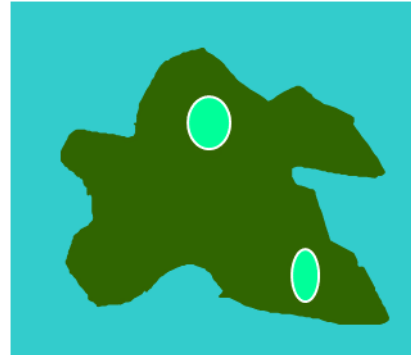
- **Florida Ecological Greenways Network (FEGN):** science-driven model of landscape-scale ecological connectivity; five priority levels
- **Florida Wildlife Corridor:** Top 3 priorities of FEGN only; a focus for conservation efforts and outreach
- **FEGN Florida Forever Strategic Priorities:** a new analysis and overlay of FEGN specifically to inform DEP/ARC/Florida Forever



Key Analysis Steps

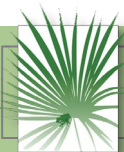


Step 1: compile Priority Ecological Areas (PEAs)



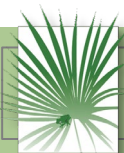
Step 2: identify Ecological Hubs

Step 3: delineate Landscape Linkages

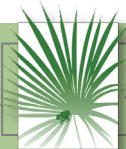
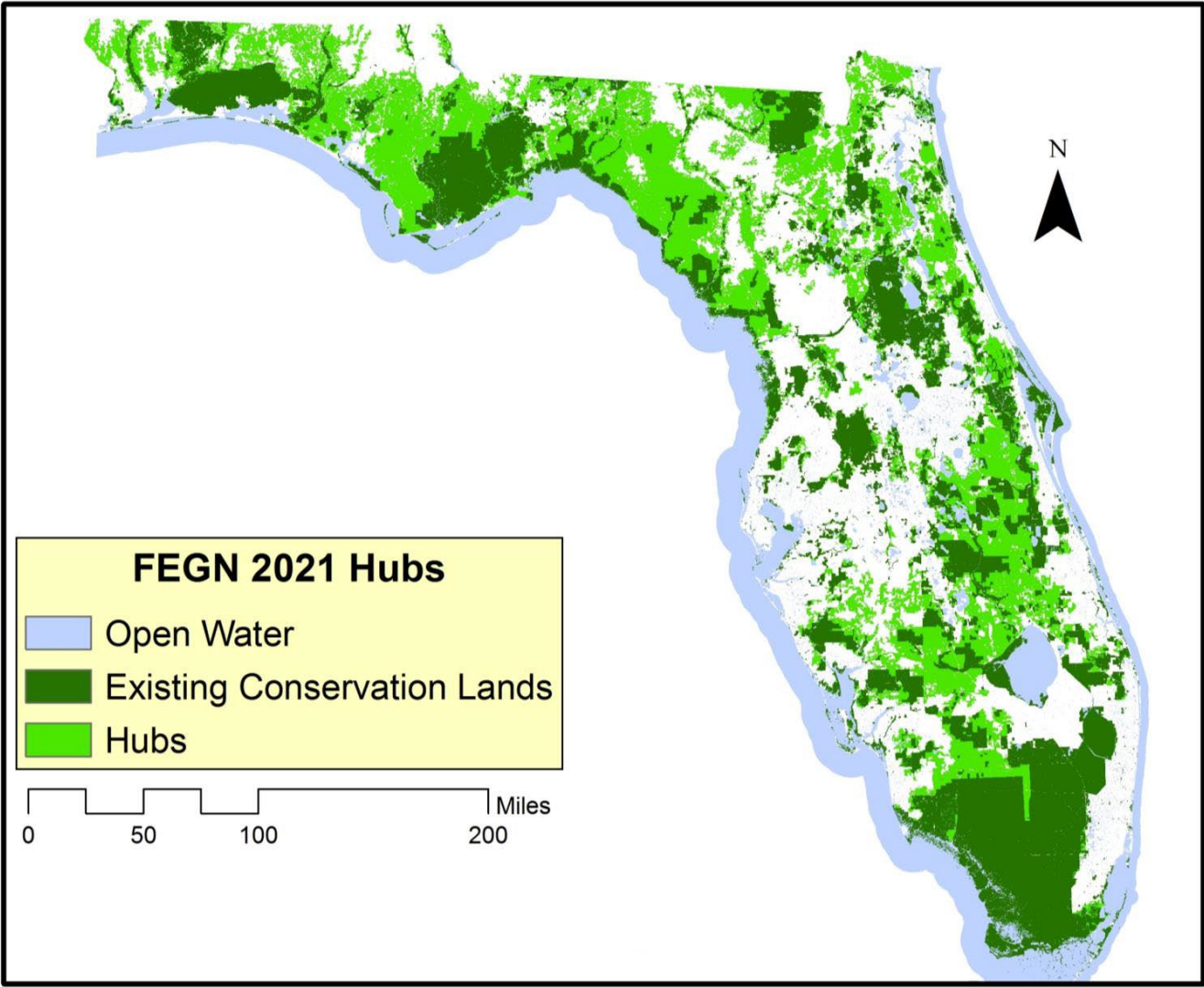


Priority Ecological Areas

PEA Data Layers
Landscape Species Habitat
USFWS Florida panther conservation zones
USFWS panther habitat model
Florida black bear habitat quality models
Florida black bear Population Priority Conservation Areas
FNAI Rare Matrix-Landscape Natural Communities (sandhill, flatwoods, dry prairie, upland hardwood forest, upland pine)
Integrated Habitat Network
Existing conservation lands
FWC Strategic Habitat Conservation Areas (SHCA)
FNAI Rare Species Habitat
FNAI Rare Natural Communities
FNAI Functional Wetlands
FNAI Potential Natural Areas
Coastal Barrier Resources Act Lands
Dark Sky Regions



2021 FEGN Hubs



FLORIDA
Natural Areas
INVENTORY

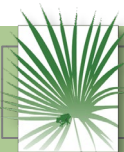
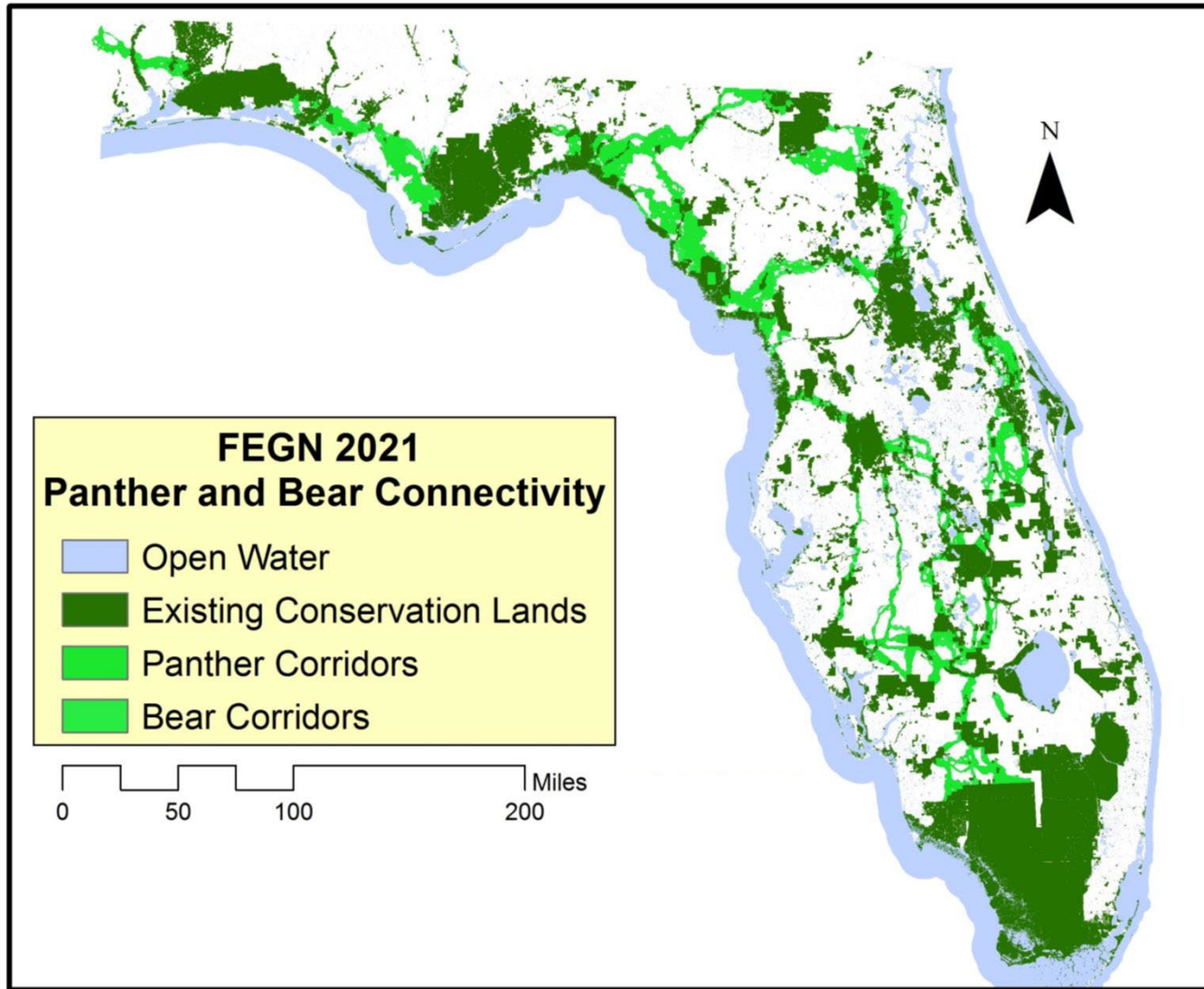


UF UNIVERSITY of
FLORIDA
Center for Landscape
Conservation Planning

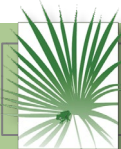
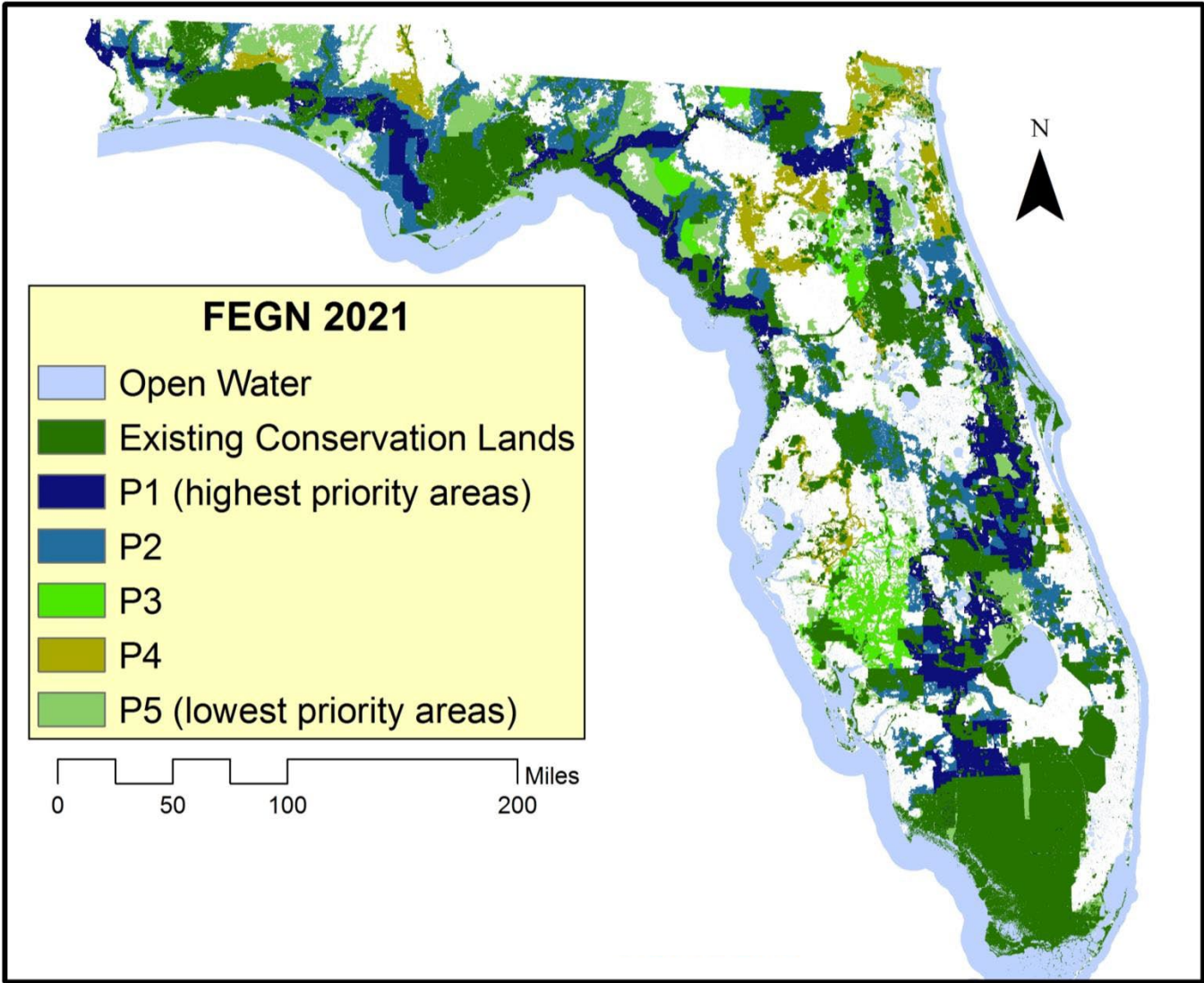


Funded by

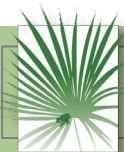
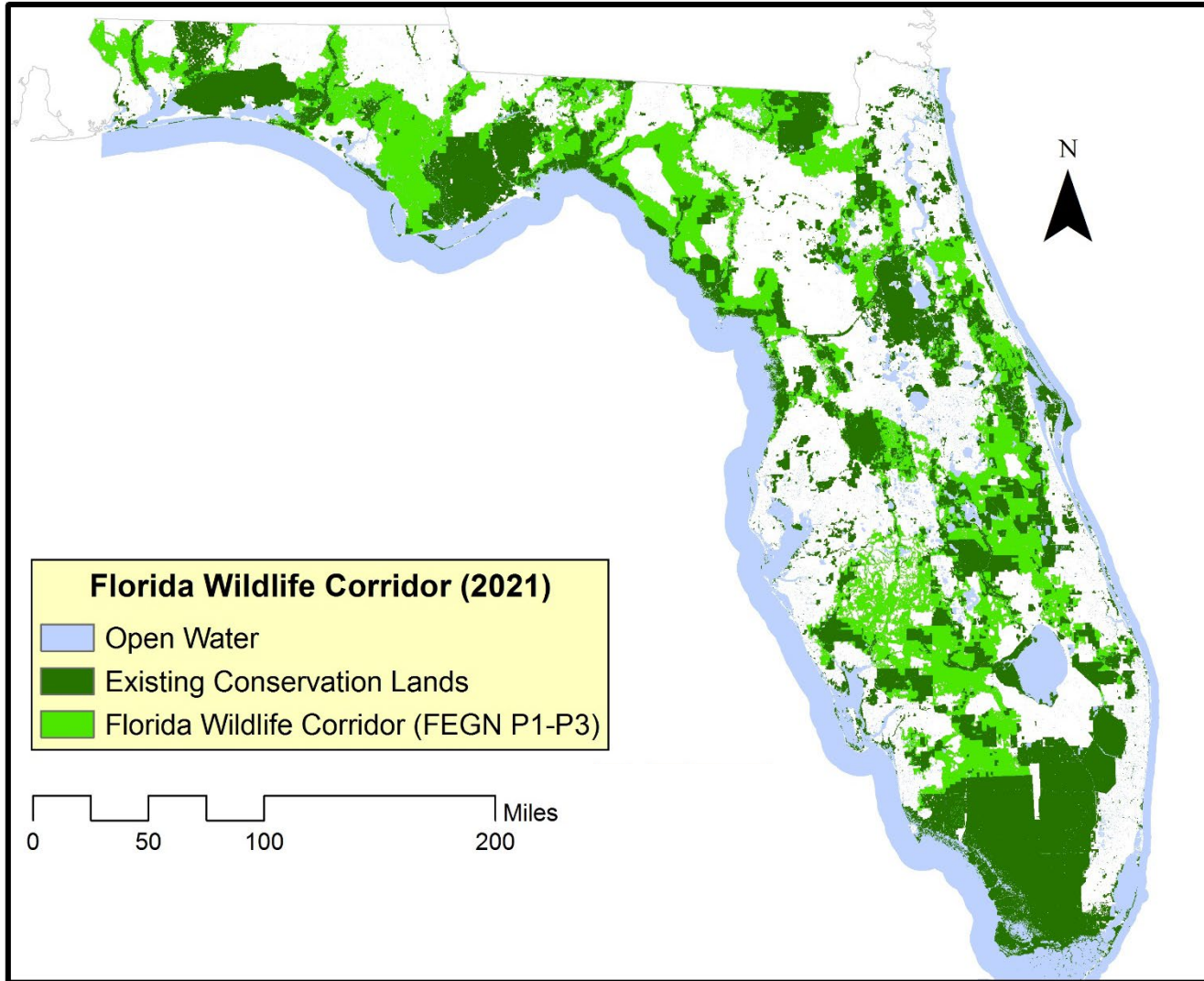
Connectivity Analyses



Final Prioritized FEGN



2021 Florida Wildlife Corridor



FLORIDA
Natural Areas
INVENTORY

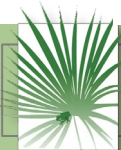
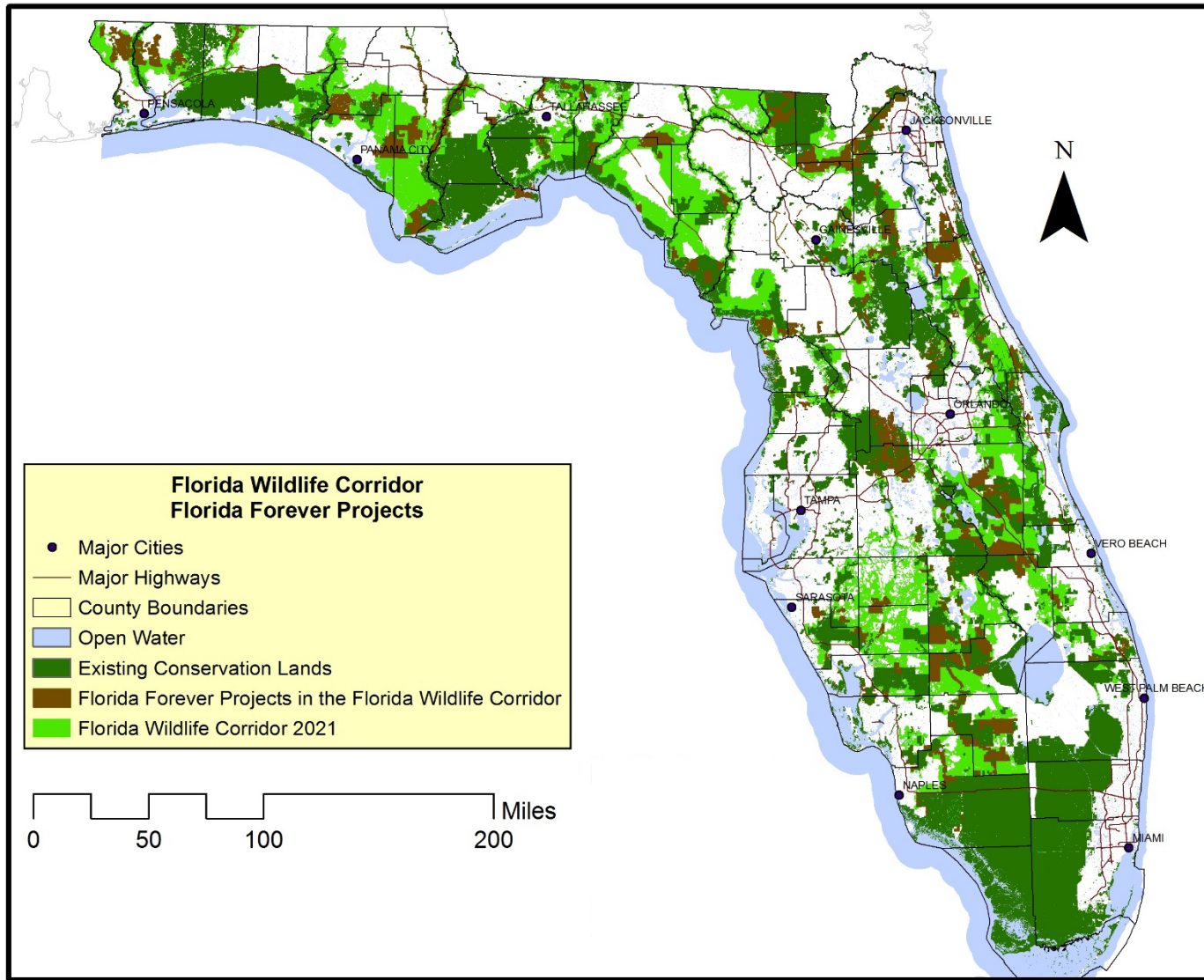


UF UNIVERSITY of
FLORIDA
Center for Landscape
Conservation Planning



Funded by

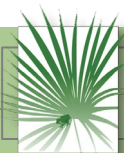
2021 Florida Wildlife Corridor



FL Forever Strategic Priorities

Goals:

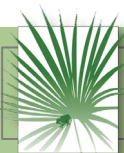
- Relevance for Florida Forever
 - Where to focus first
 - Achievable scale
- Completing connectivity of distinct corridors
- Identify critical bottlenecks: limited options for connectivity



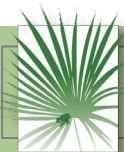
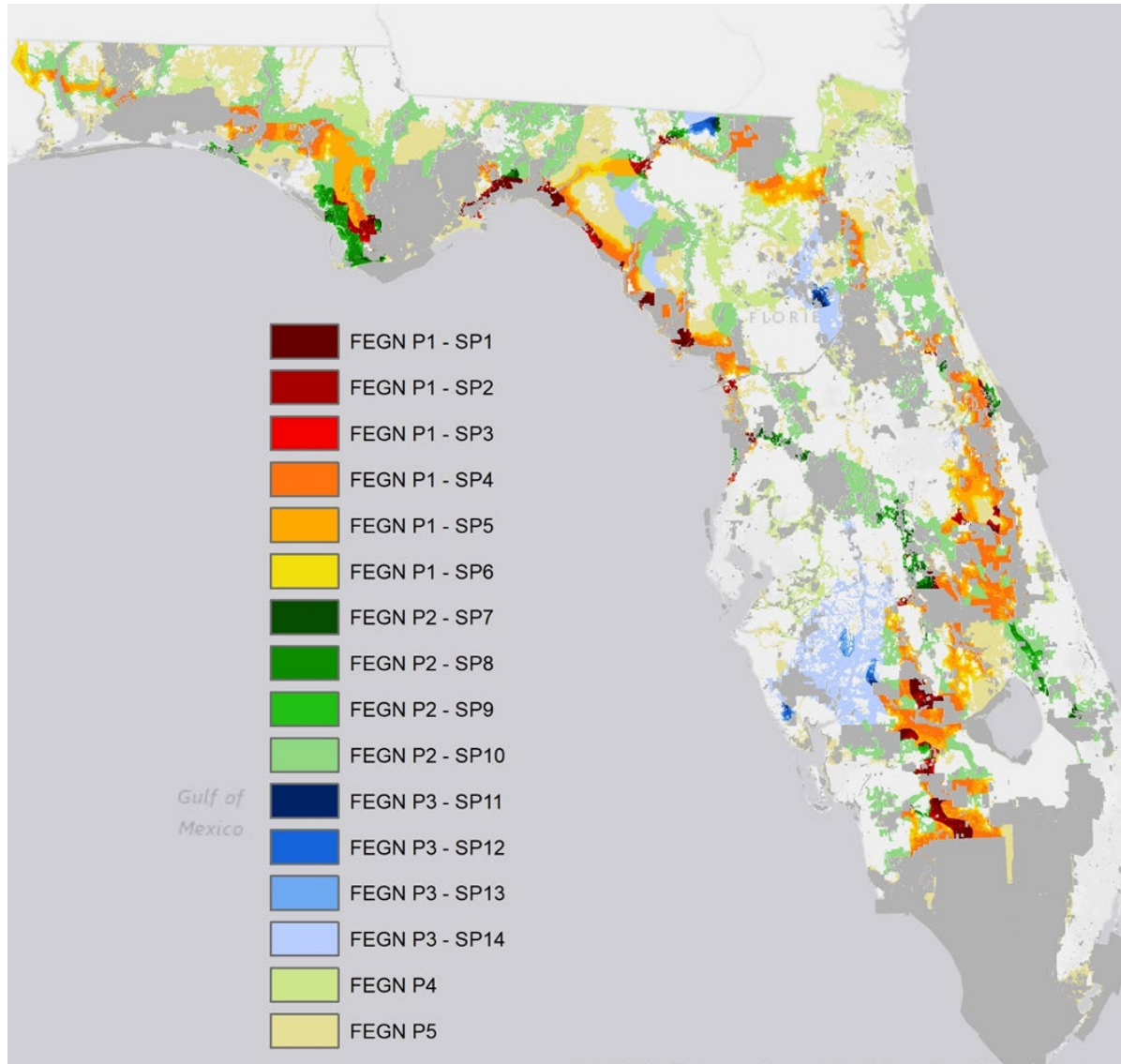
FL Forever Strategic Priorities

Components:

- Wide-ranging species connectivity needs
 - Panther
 - Bear
 - Eastern Indigo Snake
- Coastal/Inland connectivity
- Corridor cost distance analysis

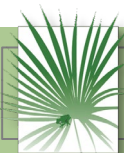


FL Forever Strategic Priorities



Key Points

- FL Ecological Greenways Network is the science behind the FL Wildlife Corridor
- FL Wildlife Corridor follows the science – defined as Priorities 1-3 of FEGN
- FL Forever Strategic Priorities is a separate analysis of all FEGN priorities specifically to inform DEP, ARC, and Florida Forever program
- FF Strategic Priorities is not the FL Wildlife Corridor
- FL Wildlife Corridor data source on web:
 - currently: <https://geodata.fnai.org/> (all FFCNA)
 - Corridor-specific data/map site coming soon.



Contact

Center for Landscape Conservation Planning

University of Florida College of Design, Construction
& Planning

PO Box 115704
Gainesville, FL 32611

352-294-1485

<http://conservation.dcp.ufl.edu/>

Florida Natural Areas Inventory

1018 Thomasville Road, Suite 200-C

Tallahassee, FL 32303

850-224-8207

www.fnai.org

