

ITEM 19:

Vote on whether to amend the Etoniah/Cross Florida Greenway Florida Forever Project Boundary to add four parcels totaling approximately 507 acres in Putnam County with a tax assessed market value of \$974,720.

LOCATION:

Putnam County

DSL STAFF REMARKS:

The Rayonier amendment, proposed by the Putnam Land Conservancy, adds four parcels in Putnam County totaling approximately 507 acres to the Etoniah/Cross Florida Greenway Florida Forever project. The property is owned by the Rayonier Forest Resources LP. The four parcels have a combined tax assessed market value of \$974,720. The landowners have been contacted and are willing sellers. The project is proposed as a fee simple acquisition and would be managed by the Division of Recreation and Parks as part of the Marjorie Harris Carr Cross Florida Greenway.

The property is primarily pine plantation, encompassing approximately three-fourths of the property. In 2020 and 2021, the pine stands were clearcut and replanted. Due to cutting, approximately half of the property's bottomland forest and floodplain swamp has been converted to successional hydric forest. A large basin swamp (approximately 40 acres) is in the center of the property and dome swamps are scattered throughout. Potley Branch, a small blackwater stream, crosses the northern third of the property on its way to Sweetwater Creek. The property is likely habitat for imperiled species such as Florida black bear (*Ursus americanus floridanus*) and is identified as Priority 2 within the Florida Ecological Greenways Network.

Boundary Amendment Criteria:

The proposal meets the criteria to be submitted as a boundary amendment. The parcels total less than 1,000 acres, have a tax assessed value of less than \$2 million, and are less than 10% of the size of the overall project to which it is being added. The proposal area should be designated as essential.

Project History:

The Etoniah/Cross Florida Greenway project, located in Citrus, Clay, Levy, Marion, and Putnam counties, was approved in 1995. Extending from the Withlacoochee River to the St. Johns River, the project will protect large expanses of flatwoods, sandhills and scrub. The Etoniah/Cross Florida Greenway project was designed to fill in gaps between conservation lands in the region, providing a pathway across Florida for species such as the Florida black bear.

The Etoniah/Cross Florida Greenway project currently identifies 92,640 acres for acquisition with 52,558 acres remaining to be acquired. The project is ranked number nine in the Critical Natural Lands category on the 2022 Florida Forever Priority List. The tax assessed value of the remaining acres to be acquired in this project per property appraiser information (2020) is \$132,744,322.

FNAI Review:

According to the FNAI Florida Forever Measures Evaluation, the parcels contributes

substantially to Aquifer Recharge (100%), Ecological Greenways (96%), Surface Water Protection (94%), Strategic Habitat Conservation Areas (89%), and FNAI Habitat Conservation Priorities (57%).

STAFF RECOMMENDATION:

Vote on the proposed boundary amendment.

ARC RECOMMENDATION:

Project	DHR	FFS	Lynetta Griner	DEP	FWC	Bill Palmer	Elva Peppers	Selected
Etoniah/Cross Florida Greenway: Rayonier								



To: Sine Murray, DEP/OES
From: Dan Hipes, FNAI
Date: November 2, 2022
Subject: Proposed Boundary Modification to the Etoniah/Cross Florida Greenway
Florida Forever BOT Project: Rayonier Tract

The primary goal of the Etoniah/Cross Florida Greenway Florida Forever Project (ECFG) is to protect a corridor of forested land and water to provide recreational opportunities and natural resource protection in northern peninsular Florida. The Rayonier Tract, which consists of a single tract encompassing 507 (487 GIS) acres, is proposed as an addition to the project to be purchased full fee.

The Rayonier Tract is located in central Putnam County approximately two and a half miles southeast of Interlachen and one mile east of Gum Creek. The tract is contiguous with the ECFG, with approximately a half mile gap to an acquired portion of the project that is now part of the Marjorie Harris Carr Cross Florida Greenway State Recreation and Conservation Area (the Greenway).

Landcover on the Rayonier Tract is primarily pine plantation, which encompasses approximately 75 percent of the area. All (or nearly so) of the stands were clearcut in 2020/2021 and replanted. Dome swamps of varying size are scattered throughout the property. A moderately large (approximately 40 acres) basin swamp is present in the central portion of the property. The recent pine harvest encroached the swamp; however, the cypress interior was left uncut. Potley Branch, a small blackwater stream, crosses the northern third of the property on its way to Sweetwater Creek in the Greenway. Approximately half of the bottomland forest/floodplain swamp along the creek has been cut in the last 20 years leaving successional hydric forest. The creek also has been impounded, creating a small (approximately 1 acre) pond at the western end of the creek within the property. An additional 1-acre dugout pond was created in 2003/2004 within former mesic flatwoods. The upland areas of the property are accessible via a series of dirt roads. No other improvements are evident.

The Rayonier Tract lies within an area of Florida where the Florida Fish and Wildlife Conservation Commission has identified Florida black bear as being abundant. There are no other rare species documented in the FNAI database for the property.

The Florida Forever Measures Evaluation (FFME) following this memo is based on the Florida Forever Conservation Needs Assessment developed by FNAI. The data used in that analysis represent a standardized, statewide perspective of natural community distributions based primarily on data from the Cooperative Land Cover Map. Nearly all of the proposed addition contributes to priority 2 and 3 Strategic Habitat Conservation Areas, priority 2 Ecological Greenways, priorities 3 and 4 Aquifer

Recharge, and priorities 2, 4, and 6 Surface Water Protection. See the following table for additional details.

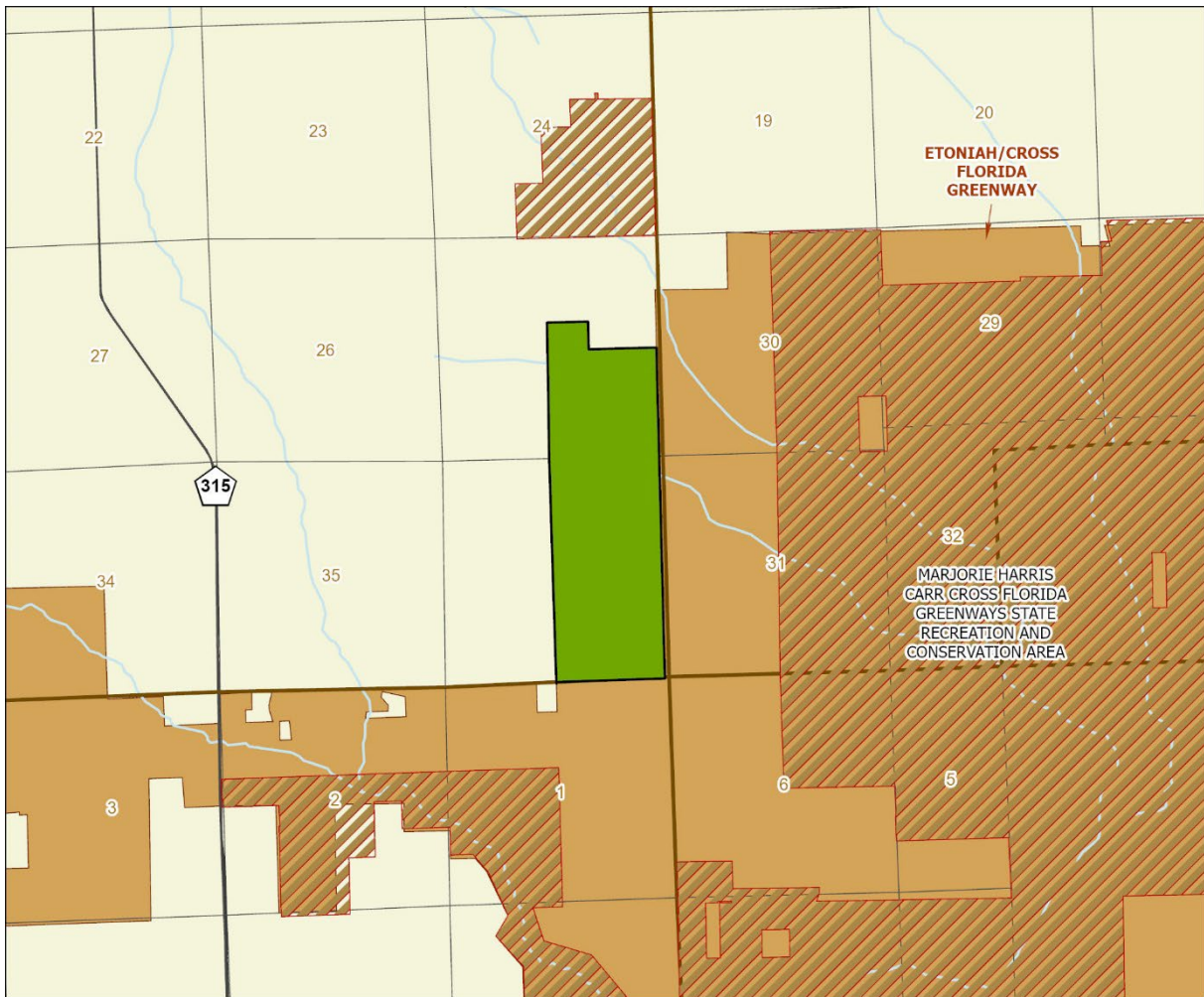
Etoniah/Cross Florida Greenway (Rayonier): Florida Forever Measure Evaluation 20221028

GIS ACRES = 487

MEASURES	Resource Acres ²	% of project
B1: Strategic Habitat Conservation Areas		
Priority 1	0	0%
Priority 2	42	9%
Priority 3	337	69%
Priority 4	0	0%
Priority 5	56	11%
Total Acres	434	89%
B2: FNAI Habitat Conservation Priorities		
Priority 1	0	0%
Priority 2	0	0%
Priority 3	0	0%
Priority 4	213	44%
Priority 5	41	8%
Priority 6	25	5%
Total Acres	279	57%
B3: Ecological Greenways		
Priority 1	0	0%
Priority 2	468	96%
Priority 3	0	0%
Priority 4	0	0%
Priority 5	0	0%
Total Acres	468	96%
B4: Under-represented Natural Communities		
Upland Glade (G1)	0	0%
Pine Rockland (G1)	0	0%
Scrub and Scrubby Flatwoods (G2)	6	1%
Rockland Hammock (G2)	0	0%
Dry Prairie (G2)	0	0%
Seepage Slope (G2)	0	0%
Sandhill (G3)	5	< 1%
Sandhill Upland Lake (G3)	0	0%
Upland Pine (G3)	0	0%
Mesic/Wet Flatwoods (G4)	4	< 1%
Upland Hardwood Forest (G5)	0	0%
Total Acres	14	3%
B6: Occurrences of FNAI Tracked Species		
G1	0	
G2	0	
G3	0	
G4	1	
G5	0	
Total	1	
C4: Natural Floodplain Function		
Priority 1	0	0%
Priority 2	0	0%
Priority 3	1	< 1%
Priority 4	199	41%
Priority 5	0	0%
Priority 6	0	0%
Total Acres	201	41%




MEASURES (continued)	Resource Acres ²	% of project
C5: Surface Water Protection		
Priority 1	0	0%
Priority 2	170	35%
Priority 3	0	0%
Priority 4	174	36%
Priority 5	0	< 1%
Priority 6	115	24%
Priority 7	0	0%
Total Acres	460	94%
C7: Fragile Coastal Resources		
Fragile Coastal Uplands	0	0%
Imperiled Coastal Lakes	0	0%
Coastal Wetlands	0	0%
Total Acres	0	0%
C8: Functional Wetlands		
Priority 1	0	0%
Priority 2	0	0%
Priority 3	1	< 1%
Priority 4	133	27%
Priority 5	0	0%
Priority 6	0	0%
Total Acres	134	28%
D3: Aquifer Recharge		
Priority 1	0	0%
Priority 2	0	0%
Priority 3	136	28%
Priority 4	336	69%
Priority 5	15	3%
Priority 6	0	0%
Total Acres	487	100%
E2: Recreational Trails (miles) (prioritized trail opportunities from Office of Greenways and Trails & Univ. Florida)		
Land Trail Priorities	0.0	
Land Trail Opportunities	0.0	
Total Miles	0.0	
F2: Arch. & Historical Sites (number) 0 sites		
G1: Sustainable Forestry		
Priority 1	0	0%
Priority 2	0	0%
Priority 3	338	69%
Priority 4	0	0%
Priority 5 - Potential Pinelands	4	< 1%
Total Acres	342	70%
G3: Forestland for Recharge	92	19%

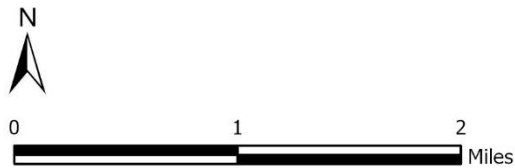
*Acres of each resource in the project and percentage of project represented by each resource are listed except where noted. This analysis converts site boundary into pixels, which causes slight differences from GIS acres; this effect is most noticeable on small sites.



**ETONIAH/CROSS FLORIDA GREENWAY
PROPOSED ADDITION (RAYONIER)**

PUTNAM COUNTY

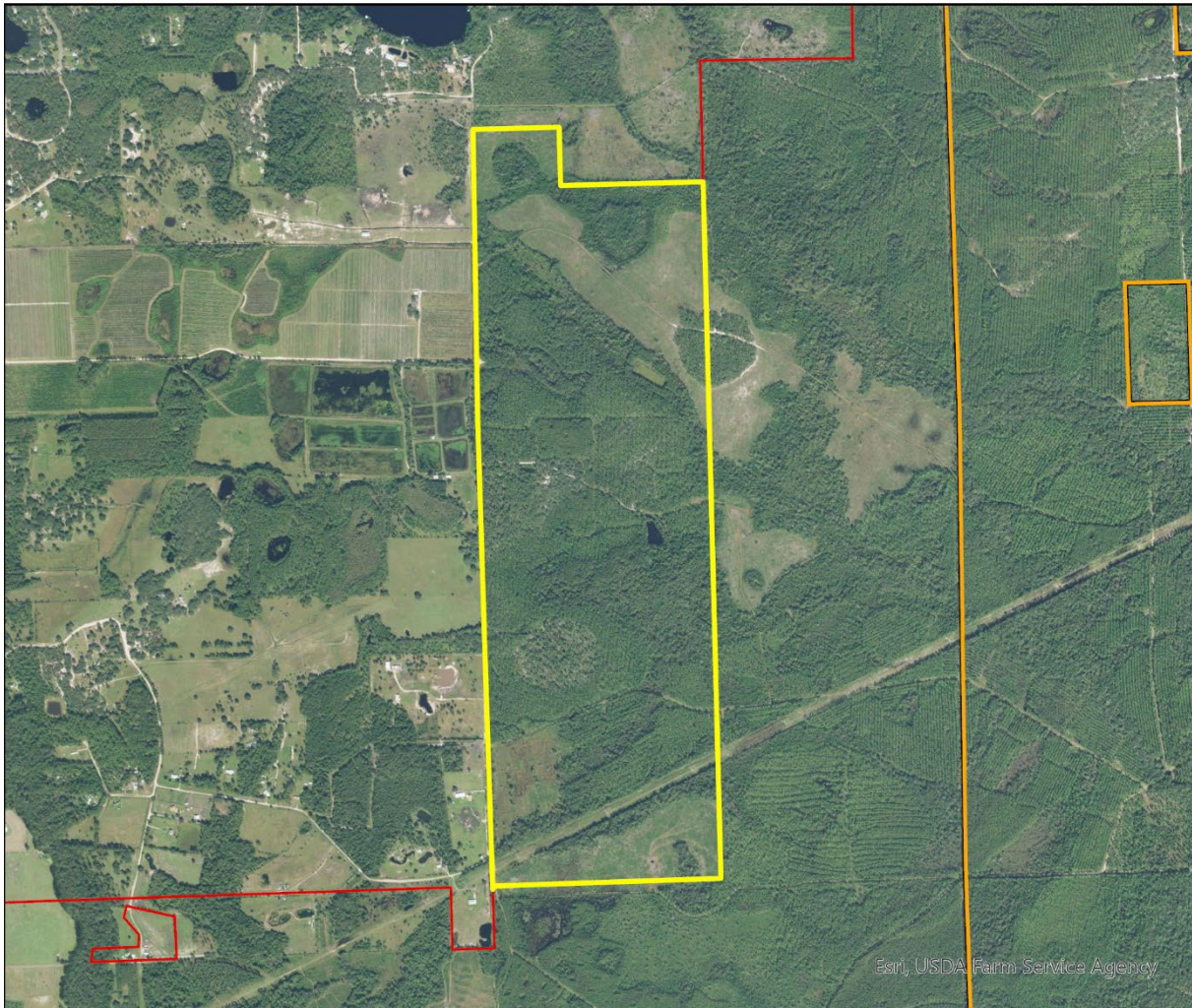
-  Proposed Addition
-  Florida Forever BOT Projects
-  State Owned Lands



MAP BY FL NATURAL AREAS INVENTORY OCTOBER 2022

Etoniah/Cross Florida Greenway Proposed Addition (Rayonier)

FLORIDA FOREVER BOARD OF TRUSTEES PROJECT PROPOSED ADDITION AS OF OCTOBER 2022



Map Produced by: FL Natural Areas Inventory, N. Pasco, October 2022

Background: USA NAIP Imagery Resolution = 1.0 meter



-  Florida Forever Proposed Addition
-  Florida Forever BOT Projects
-  Existing State Conservation Lands

