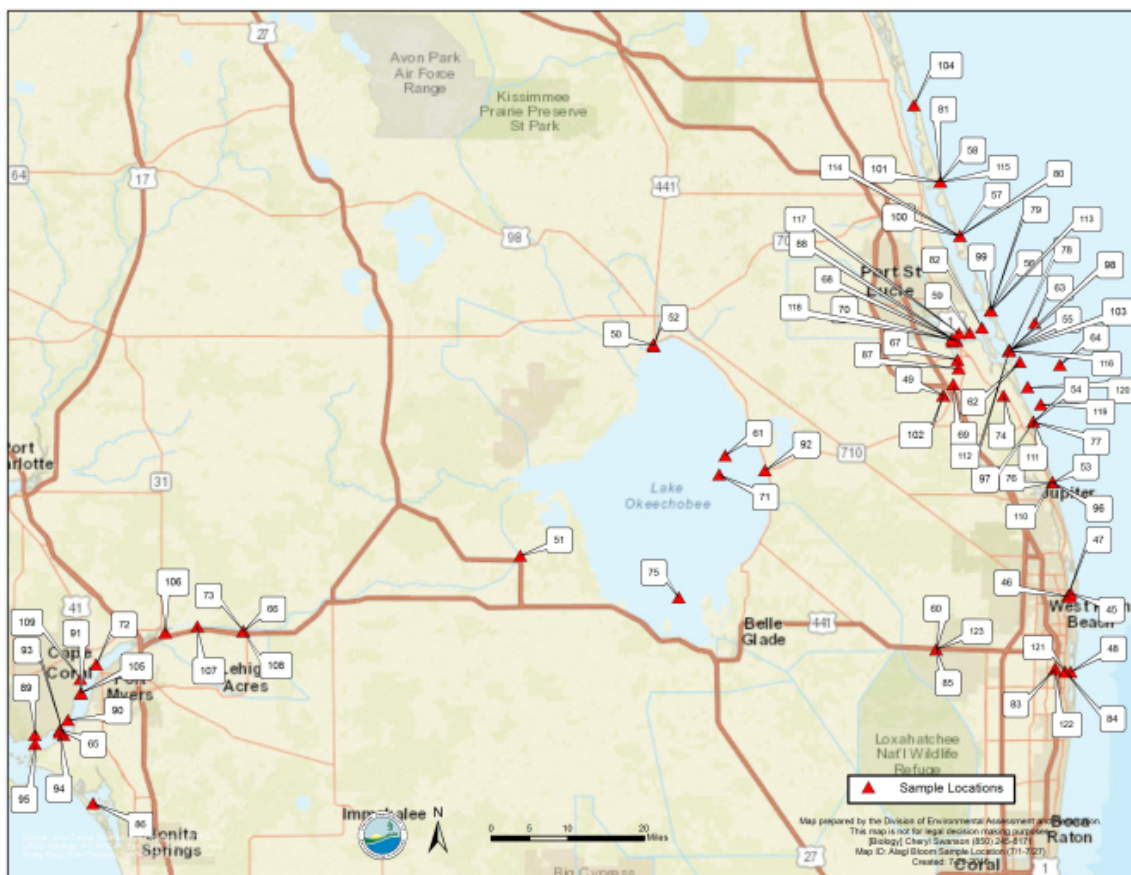


South Florida Algal Bloom Sampling Results – July



Sample Date	Samples Collected By	Samples Analyzed By	Sampling Location (Latitude and Longitude)	Depth (Meters)	Algae ID (Type of Blue Green Algae)	Microcystin Toxin (measurement in micrograms per liter)
7/27/2016 (123)	FDEP	FDEP	Palm Beach County Flying Cow Road Bridge (N 26° 40' 58.05", W -80° 17' 53.83")	0.25	mixed algae; no dominant species in sample	not detected
7/27/2016 (122)	FDEP	FDEP	Palm Beach County Lake Clarke Shores (N 26° 38' 58.8", W -80° 4')	0.25	mixed algae; no dominant species in sample	not detected

			27.2")			
7/27/2016 (121)	FDEP	FDEP	Palm Beach County S155 (N 26° 38' 41.20", W -80° 3' 17.98")	0.25	mixed algae; no dominant species in sample	not detected
7/25/2016 (120)	FDEP	FDEP	Martin County St. Lucie SE02 (N 27° 5' 43", W -80° 7' 31")	0.25	mixed algae; no dominant species in sample	not detected
7/25/2016 (119)	FDEP	FDEP	Martin County St. Lucie Estuary SE11 (N 27° 12' 20", W -80° 6' 3")	0.25	mixed algae; no dominant species in sample	not detected
7/26/2016 (118)	FDEP	FDEP	Martin County St. Lucie River-docks near Dyer Point (N 27° 12' 20", W -80° 16' 8")	0.3	mixed algae; no dominant species in sample	1.5 l
7/26/2016 (117)	FDEP	FDEP	Martin County St. Lucie River-Central Marine (N 27° 12' 55", W -80° 15' 18")	0.3	mixed algae; no dominant species in sample	1.8 l
7/25/2016 (116)	FDEP	FDEP	Martin County Bathtub Beach Reef Park (N 27° 11' 7", W -80° 9' 36")	0.3	mixed algae; no dominant species in sample	not detected
7/26/2016 (115)	FWRI	FWRI - algal ID; FDEP - toxins	Martin County Ft. Pierce Inlet Beach (N 27° 28' 11", W 80° 17' 25")	0.6 m	mixed algae; no dominant species in sample	not detected
7/26/2016 (114)	FWRI	FWRI - algal ID; FDEP - toxins	Martin County Blind Creek Beach North (N 27° 22' 44", W 80° 15'	0.6 m	mixed algae; no dominant species in sample	not detected

			12")			
7/26/2016 (113)	FWRI	FWRI - algal ID; FDEP - toxins	St. Lucie County Jensen Beach (N 27° 15' 14", W 80° 11' 44")	0.6 m	mixed algae; no dominant species in sample	not detected
7/26/2016 (112)	FWRI	FWRI - algal ID; FDEP - toxins	St. Lucie County Bathtub Beach (N 27° 11' 13", W 80° 9' 36")	0.6 m	mixed algae; no dominant species in sample	not detected
7/26/2016 (111)	FWRI	FWRI - algal ID; FDEP - toxins	St. Lucie County Hobe Sound Beach (N 27° 3' 59", W 80° 6' 53")	0.6 m	mixed algae; no dominant species in sample	not detected
7/26/2016 (110)	FWRI	FWRI - algal ID; FDEP - toxins	Palm Beach County Coral Cove Beach (N 26° 57' 53", W 80° 4' 42")	0.6 m	mixed algae; no dominant species in sample	not detected
7/21/2016 (109)	FDEP	FDEP	Lee County N. Ft. Myers Canal on Caloosahatchee River (N 26° 37' 58.6776", W -81° 54' 49.8924")	0.3	mixed algae; no dominant species in sample	not detected
7/21/2016 (108)	FDEP	FDEP	Lee County Alva Boat Ramp (N 29° 27' 54", W -82° 10' 39")	0.3	mixed algae; no dominant species in sample	not detected
7/21/2016 (107)	FDEP	FDEP	Lee County Franklin Locks, upstream (N 26° 43' 16.0", W -81° 41' 35")	0.3	mixed algae; no dominant species in sample	not detected
7/21/2016 (106)	FDEP	FDEP	Lee County Davis Boat Ramp (N 26° 42' 40.6080", W -81°	0.3	mixed algae; no dominant species in sample	not detected

			45' 11.8440")			
7/21/2016 (105)	FDEP	FDEP	Lee County Midpoint Bridge at Park (Four Mile Cove) (N 26° 36' 33.5880", W -81° 54' 45.8964")	0.3	mixed algae; no dominant species in sample	not detected
7/19/2016 (104)	FDEP	FDEP	Indian River County Moorings Yacht Club beach (N 27° 35' 51.6300", W - 80° 20' 25.0332")	0.3	mixed algae; no dominant species in sample	not detected
7/19/2016 (103)	FDEP	FDEP	Martin County Bathtub Beach Reef Park (N 27° 11' 12.1056", W - 80° 9' 37.0296")	0.3	mixed algae; no dominant species in sample	not detected
7/19/2016 (102)	FDEP	FDEP	Martin County C44S80 (N 27° 6' 37", W -80° 17' 7")	0.3	mixed algae; no dominant species in sample	not detected
7/19/2016 (101)	FWC	FWRI - algal ID; FDEP - toxins	St. Lucie County Ft. Pierce Inlet Beach (N 27° 28' 11", W 80° 17' 25")	0.6	mixed algae; no dominant species in sample	not detected
7/19/2016 (100)	FWC	FWRI - algal ID; FDEP - toxins	St. Lucie County Blind Creek Beach North (N 27° 22' 44", W 80° 15' 12")	0.6	mixed algae; no dominant species in sample	not detected
7/19/2016 (99)	FWC	FWRI - algal ID; FDEP - toxins	Martin County Jensen Beach (N 27° 15' 14", W 80° 11' 44")	0.6	mixed algae; no dominant species in sample	not detected
7/19/2016 (98)	FWC	FWRI - algal ID; FDEP -	Martin County Bathtub Beach (N 27° 11' 13", W	0.6	mixed algae; no dominant species	not detected

		toxins	80° 9' 36")		in sample	
7/16/2016 (97)	FWC	FWRI - algal ID; FDEP - toxins	Martin County Hobe Sound Beach (N 27° 3' 59", W 80° 6' 53")	0.6	mixed algae; no dominant species in sample	not detected
7/19/2016 (96)	FWC	FWRI - algal ID; FDEP - toxins	Palm Beach County Coral Cove Beach (N 26° 57' 53", W 80° 4' 92")	0.6	mixed algae; no dominant species in sample	not detected
7/18/2016 (95)	FDEP	FDEP	Lee County Shell Point (N 26° 31' 21.2520", W - 81° 59' 58.1640")	0.3	mixed algae; no dominant species in sample	not detected
7/18/2016 (93)	FDEP	FDEP	Lee County Caloosahatchee River at Channel Marker 76 (N 26° 32' 32.8920", W - 81° 57' 8.5680")	0.3	mixed algae; no dominant species in sample	not detected
7/18/2016 (92)	FDEP	FDEP	Martin County S308C (N 26° 59' 05", W -80° 37' 217")	0.3	mixed algae; no dominant species in sample	1.4 l
7/14/2016 (91)	FDEP	FDEP	Lee County Horton Park boat ramp (N 26° 36' 27.2880", W 81° 54' 48.096")	0.3	mixed algae; no dominant species in sample	not detected
7/14/2016 (90)	FDEP	FDEP	Lee County Bernice Braden Park (N 26° 33' 48.8880", W 81° 56' 13.9560")	0.3	mixed algae; no dominant species in sample	1.1 l
7/14/2016 (89)	FDEP	FDEP	Lee County Cape Harbor Marina Dock (N 26° 32' 18.2040", W 81° 59'	0.3	mixed algae; no dominant species in sample	not detected

			57.1920")			
7/13/2016 (88)	FDEP	FDEP	Martin County St. Lucie river 80m west of NW Dixie Hwy Bridge (N 27° 12' 10", W 80° 15' 42")	0.3	mixed algae; no dominant species in sample	not detected
7/13/2016 (87)	FDEP	FDEP	Martin County S. Fork St. Lucie south of Veteran's Memorial Bridge (N 27° 9' 24", W 80° 15' 22")	0.3	mixed algae; no dominant species in sample	not detected
7/13/2016 (86)	FDEP	FDEP	Lee County Estero Bay north of Coon Key (N 26° 25' 22", W 81° 53' 22")	Not provided	mixed algae; no dominant species in sample	not detected
7/13/2016 (85)	SFWMD	FDEP	Palm Beach County Flying Cow Road Bridge (N 26° 40' 58.05", W 80° 17' 53.83")	0.25	mixed algae; no dominant species in sample	22.6
7/13/2016 (84)	SFWMD	FDEP	Palm Beach County S155 (N 26° 38' 41.20", W 80° 3' 17.98")	0.25	mixed algae; no dominant species in sample	36.2
7/13/2016 (83)	SFWMD	FDEP	Palm Beach County Lake Clarke Shores (N 26° 38' 58.8", W 80° 4' 27.2")	0.25	mixed algae; no dominant species in sample	not detected
7/12/2016 (82)	FDEP	FDEP	Martin County Indian Riverside Park (N 27° 13' 29", W 80° 12'	0	Dominant taxon: Plectonema wollei	not collected

			42")			
7/12/2016 (81)	FWC	FWRI - algal ID; FDEP - toxins	St. Lucie County Ft. Pierce Inlet Beach (N 27° 28' 10", W 80° 17' 25")	0.6	mixed algae; no dominant species in sample	not detected
7/12/2016 (80)	FWC	FWRI - algal ID; FDEP - toxins	St. Lucie County Blind Creek Beach North (N 27° 22' 44", W 80° 15' 12")	0.6	mixed algae; no dominant species in sample	not detected
7/12/2016 (79)	FWC	FWRI - algal ID; FDEP - toxins	Martin County Jensen Beach (N 27° 15' 13", W 80° 11' 43")	0.6	mixed algae; no dominant species in sample	not detected
7/12/2016 (78)	FWC	FWRI - algal ID; FDEP - toxins	Martin County Bathtub Beach (N 27° 11' 13", W 80° 9' 36")	0.6	mixed algae; no dominant species in sample	not detected
7/12/2016 (77)	FWC	FWRI - algal ID; FDEP - toxins	Martin County Hobe Sound Beach (N 27° 3' 58", W 80° 6' 52")	0.6	mixed algae; no dominant species in sample	not detected
7/12/2016 (76)	FWC	FWRI - algal ID; FDEP - toxins	Palm Beach County Coral Cove Beach (N 26° 57' 52", W 80° 4' 43")	0.6	mixed algae; no dominant species in sample	not detected
7/12/2016 (75)	SFWMD	FDEP	Palm Beach County L007 (N 26° 46' 12", W -80° 47' 3.6")	0.3	Dominant taxon: Aphanizomenon flosaquae	not detected
7/12/2016 (74)	SFWMD	FDEP	Martin County C44S80 (N 27° 6' 37", W -80° 17' 7")	0.3	mixed algae; no dominant species in sample	not detected

7/12/2016 (73)	FDEP	FDEP	Lee County Alva Boat Ramp at Josephine Street (N 26° 42' 50", W -81° 36' 21")	0.3	mixed algae; no dominant species in sample	1.3 l
7/12/2016 (72)	FDEP	FDEP	Lee County North Shore Park (N 26° 39' 27.0432", W -81° 53' 1.3344")	0.3	mixed algae; no dominant species in sample	not detected
7/11/2016 (71)	SFWMD	FDEP	Martin County L004 (N 26° 58' 40", W -80° 42' 29")	0.3	mixed algae; no dominant species in sample	3.6 l
7/11/2016 (70)	FDEP	FDEP	Martin County St. Lucie River 30M east of SW Ashby Ln docks (N 27° 12' 3.3102", W -80° 16' 2.4086")	0.3	mixed algae; no dominant species in sample	1.8 l
7/11/2016 (69)	FDEP	FDEP	Martin County St. Lucie, South Fork (N 27° 7' 46.77", W -80° 15' 57.420")	0.3	mixed algae; no dominant species in sample	4.6
7/7/2016 (68)	SFWMD	FDEP	Martin County St. Lucie Estuary- SE03 (N 27° 12' 10", W -80° 15' 33")	0.3	mixed algae; no dominant species in the sample	not detected
7/7/2016 (67)	SFWMD	FDEP	Martin County St. Lucie Estuary- SE08B (N 27° 10' 14", W -80° 15' 28")	0.3	mixed algae; no dominant species in the sample	not detected
7/7/2016 (66)	FDEP	FDEP	Lee County Alva Boat Ramp (N 26° 42' 47.5914", W -81°	0.3	mixed algae; no dominant species in the sample	not detected

			36' 23.328")			
7/7/2016 (65)	FDEP	FDEP	Lee County Cape Coral Yacht Club (N 26° 32' 33.4314", W -81° 57' 8.4954")	0.3	mixed algae; no dominant species in the sample	1
7/7/2016 (64)	FWC	FWRI - algal ID; FDEP - toxins	Ocean Sample West 400 Artificial Reef (N 27° 9' 44.1", W - 80° 3' 51.480")	0.6	mixed algae; no dominant species in the sample	not detected
7/7/2016 (63)	FWC	FWRI - algal ID; FDEP - toxins	Ocean Sample Upside down Barge wreck (N 27° 13' 56.8920", W -80° 6' 42.840")	0.6	mixed algae; no dominant species in the sample	not detected
7/7/2016 (62)	FWC	FWRI - algal ID; FDEP - toxins	Ocean Sample Whistle Buoy (N 27° 10' 2.280", W -80° 8' 24.720")	0.6	mixed algae; no dominant species in the sample	not detected
7/6/2016 (N/A)	OUA	GreenWater Laboratories	Okeechobee Utility Authority Old Intake - after ozone (not provided)	not provided	not analyzed	not detected
7/6/2016 (61)	SFWMD	FDEP	Martin County S308C, Port Mayaca Lakeside Lower (N 26° 59' 095", W -80° 37' 288")	0.3	Dominant taxon: Planktolyngbya limnetica	1.4 l
7/6/2016 (60)	SFWMD	FDEP	Palm Beach County C51 at Flying Cow Rd. Bridge (N 26° 40' 58.01", W - 80° 17' 53.96")	0.25	mixed algae; no dominant species in the sample	6.3

7/6/2016 (59)	FDEP	FDEP	Martin County St. Lucie River - 50m from shore between NE Anchorage Dr. and NE Glass Dr. (N 27° 12' 57", W -80° 14' 7")	0.3	mixed algae; no dominant species in the sample	7.3
7/6/2016 (58)	FWC	FWRI - algal ID; FDEP - toxins	St. Lucie County Ft. Pierce Inlet Beach (N 27° 28' 29", W 80° 17' 25")	0.5	mixed algae; no dominant species in sample	not detected
7/6/2016 (57)	FWC	FWRI - algal ID; FDEP - toxins	St. Lucie County Blind Creek Beach North (N 27° 22' 43", W 80° 15' 12")	0.5	mixed algae; no dominant species in sample	not detected
7/6/2016 (56)	FWC	FWRI - algal ID; FDEP - toxins	Martin County Jensen Beach (N 27° 15' 12", W 80° 11' 41")	0.5	mixed algae; no dominant species in sample	not detected
7/6/2016 (55)	FWC	FWRI - algal ID; FDEP - toxins	Martin County Bathtub Beach (N 27° 11' 13", W 80° 9' 37")	0.5	mixed algae; no dominant species in sample	not detected
7/6/2016 (54)	FWC	FWRI - algal ID; FDEP - toxins	Martin County Hobe Sound Beach (N 27° 4' 0", W 80° 6' 53")	0.5	mixed algae; no dominant species in sample	not detected
7/6/2016 (53)	FWC	FWRI - algal ID; FDEP - toxins	Palm Beach County Coral Cove Beach (N 26° 57' 51", W 80° 4' 42")	0.5	mixed algae; no dominant species in sample	not detected
7/5/2016 (52)	SFWMD	FDEP	Okeechobee County Lake Okeechobee Interior (N 27° 11' 21", W -80° 49'	0.3	Dominant taxon: Dolichospermum circinale	not detected

			32")			
7/5/2016 (51)	SFWMD	FDEP	Glades County S-77 Structure (N 26° 50' 26.82", W -81° 5' 0.68")	0.3	mixed algae; no dominant species in the sample	not detected
7/5/2016 (50)	SFWMD	FDEP	Okeechobee County Lake Okeechobee Rim Canal (N 27° 11' 46.8", W -80° 49' 56.9")	0.3	mixed algae; no dominant species in the sample	not detected
7/5/2016 (49)	SFWMD	FDEP	Martin County St. Lucie Lock, C44 S80 (N 27° 6' 39", W -80° 17' 4")	0.3	Co-dominant taxa: Microcystis aeruginosa and Dolichospermum circinale	86
7/5/2016 (48)	FDEP	FDEP	Palm Beach County C-51 Canal at Lake Worth Lagoon (N 26° 38' 40", W -80° 2' 40")	0.3	mixed algae; no dominant species in the sample	not detected
7/1/2016 (47)	FDEP	FDEP	Palm Beach County Peanut Island West (N 26° 46' 25.1954", W -80° 2' 58.2176")	not provided	mixed algae; no dominant species in the sample	not analyzed
7/1/2016 (46)	FDEP	FDEP	Palm Beach County Peanut Island East (N 26° 46' 17.652", W -80° 2' 36.6")	not provided	mixed algae; no dominant species in the sample	not analyzed
7/1/2016 (45)	FDEP	FDEP	Palm Beach County Peanut Island North (N 26° 46' 38.784", W -80°	not provided	mixed algae; no dominant species in the sample	not analyzed

			2' 39.5160")			
--	--	--	--------------	--	--	--