

Jonathan Dickinson State Park Unit Management Plan Amendment

INTRODUCTION

Land use planning and park development decisions for the state park system are based on the dual responsibilities of the Florida Department of Environmental Protection (DEP), Division of Recreation and Parks (DRP). These responsibilities are to preserve representative examples of original natural Florida and its cultural heritage, and to provide outdoor recreation opportunities for Florida's citizens and visitors. As changes occur to the park environment due to natural forces or land acquisitions, or as conservation and recreation interests evolve, the conceptual land use plan may be amended to address new conditions or needs. This amendment to the 2012 ARC-approved unit management plan for Jonathan Dickinson State Park includes the addition of facilities to meet demand for new and expanded recreation opportunities. Design details and precise location of proposed facilities will be determined and developed according to conceptual land use elements described below and are contingent on funding and concession agreements.

CONCEPTUAL LAND USE PLAN

Golf Complexes East and West

Objective: Provide opportunities for golfing.

Action:

- *Design and develop two 18-hole golf courses.*
- *Design and develop one 9-hole golf course.*

This concept proposes development of an 18-hole golf course and a separate 9-hole golf course between the Brightline intercity rail and US Highway 1 transportation corridors and the development of a second 18-hole golf course in the northeastern portion of the park on the westside of the Brightline rail corridor. The concept includes a supporting clubhouse and ancillary facilities.

Golf course development between the Brightline intercity rail and the US Highway 1 transportation corridors necessitates the relocation and re-development of existing park support facilities including staff residences, a training center, and the DRP District 5 office complex. Given existing utilities and road proximities, these facilities should be reconstructed in remaining available space east of the Brightline corridor. Additionally, the Hobe Mountain observation tower and a non-operational radar facility will need to be removed.

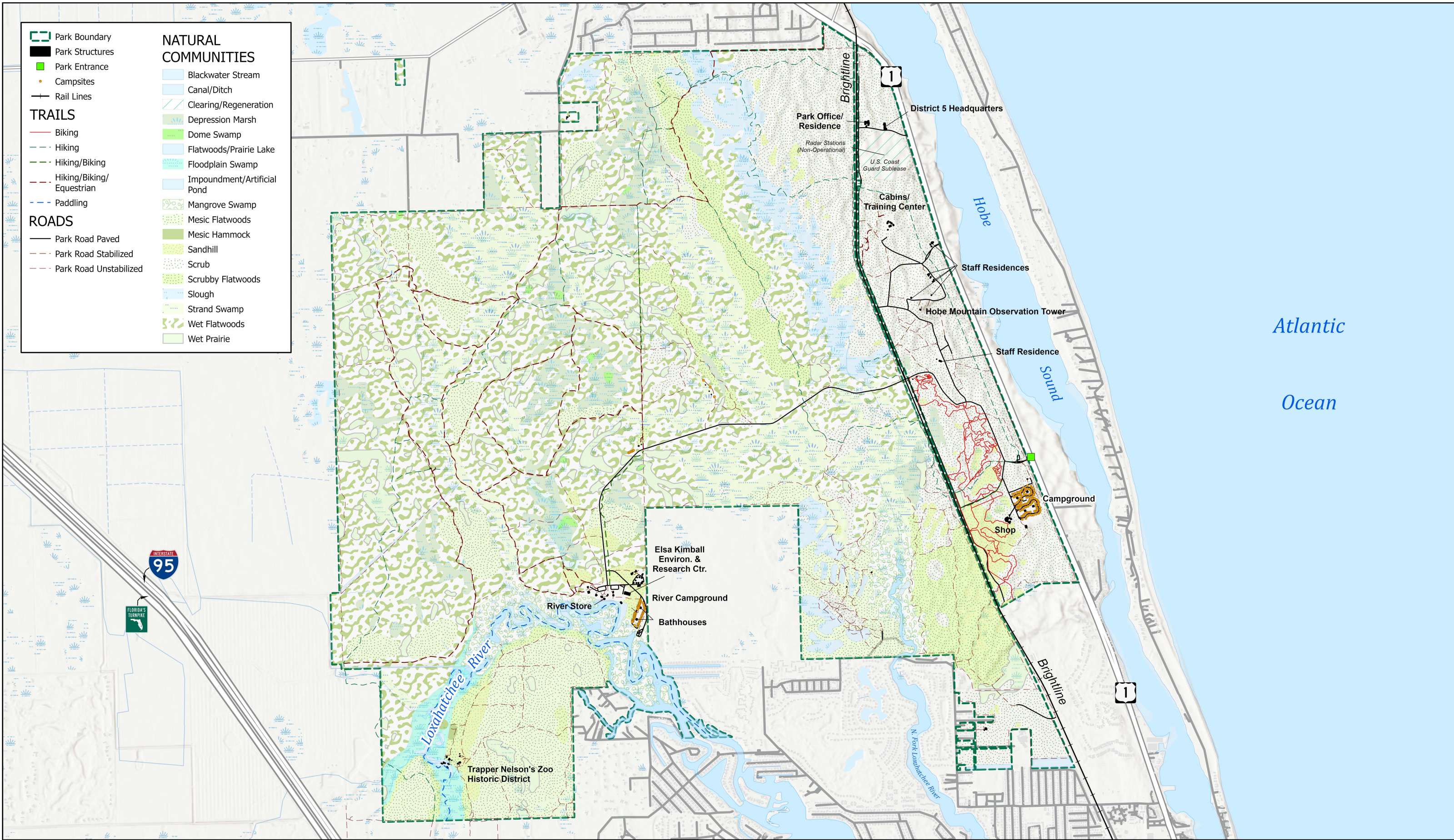
Avoidance of sensitive habitat will be priority in the design of the proposed golf courses.

Park Boundary
Park Structures
Park Entrance
Campsites
Rail Lines

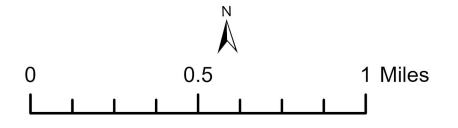
TRAILS
 Biking
 Hiking
 Hiking/Biking
 Hiking/Biking/Equestrian
 Paddling

ROADS
 Park Road Paved
 Park Road Stabilized
 Park Road Unstabilized

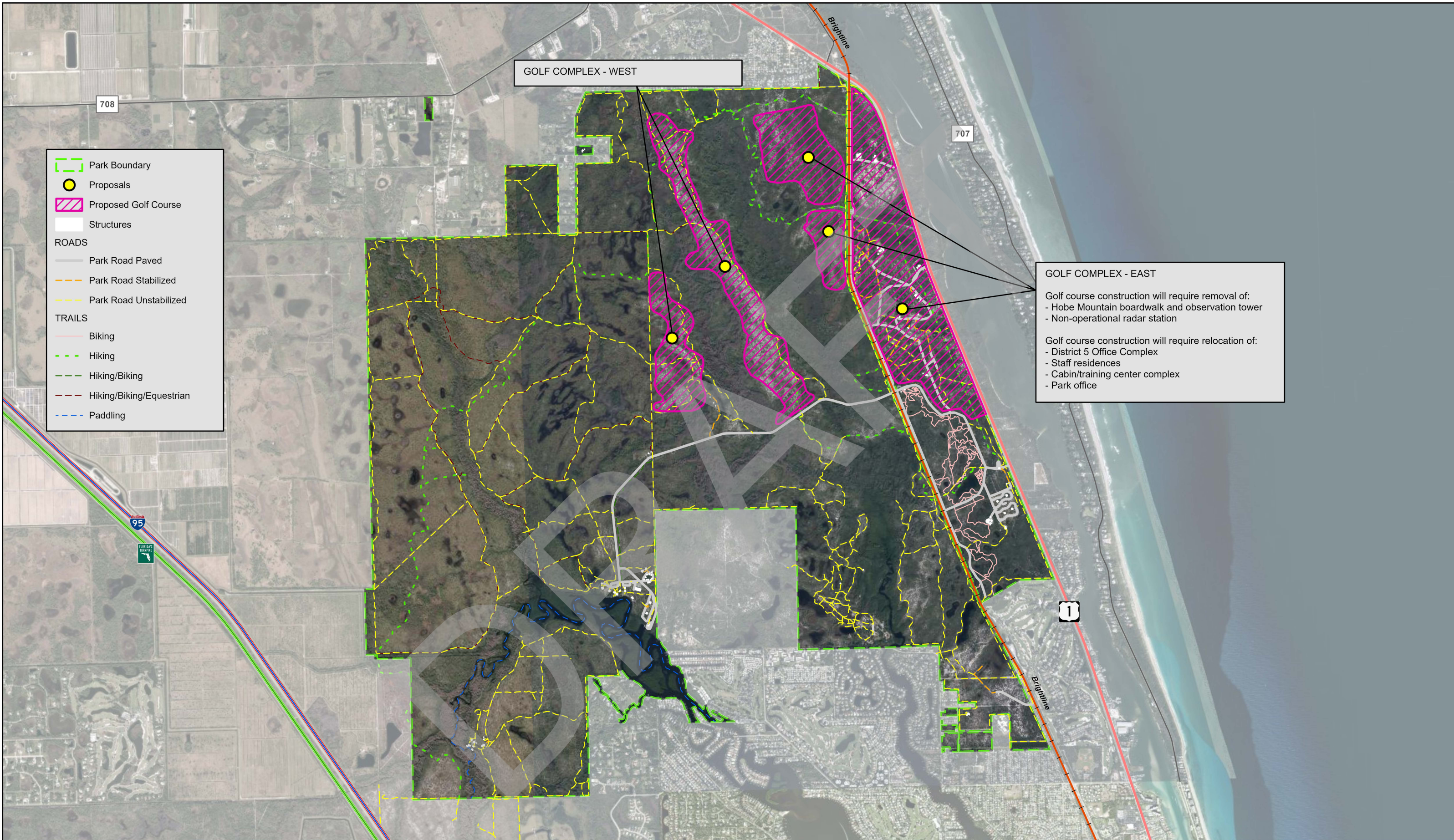
NATURAL COMMUNITIES
 Blackwater Stream
 Canal/Ditch
 Clearing/Regeneration
 Depression Marsh
 Dome Swamp
 Flatwoods/Prairie Lake
 Floodplain Swamp
 Impoundment/Artificial Pond
 Mangrove Swamp
 Mesic Flatwoods
 Mesic Hammock
 Sandhill
 Scrub
 Scrubby Flatwoods
 Slough
 Strand Swamp
 Wet Flatwoods
 Wet Prairie



JONATHAN DICKINSON STATE PARK
 Reference Map



Sources: ESRI, Florida Department of Environmental Protection, Florida Natural Areas Inventory. This graphical representation is provided for informational purposes only and should not be considered authoritative for navigational, engineering, legal, or other uses.



GOLF COMPLEX - WEST

GOLF COMPLEX - EAST

- Golf course construction will require removal of:
- Hobe Mountain boardwalk and observation tower
 - Non-operational radar station
- Golf course construction will require relocation of:
- District 5 Office Complex
 - Staff residences
 - Cabin/training center complex
 - Park office

- Park Boundary
 - Proposals
 - Proposed Golf Course
 - Structures
- ROADS
- Park Road Paved
 - Park Road Stabilized
 - Park Road Unstabilized
- TRAILS
- Biking
 - Hiking
 - Hiking/Biking
 - Hiking/Biking/Equestrian
 - Paddling



JONATHAN DICKINSON STATE PARK
Amended Conceptual Land Use Plan



Sources: ESRI, Florida Department of Environmental Protection, Florida Natural Areas Inventory.
This graphical representation is provided for informational purposes only and should not be considered authoritative for navigational, engineering, legal, or other uses.