



# Planning for Resilient Infrastructure

Kelli Hammer Levy, Director, Pinellas County Division of Environmental Management

Overview of goal and current efforts



```
graph TD; A[Overview of goal and current efforts] --> B[Overview of guidance]; B --> C[Overview of tool]; C --> D[Moving the tool to the web]; D --> E[Discussion];
```

Overview of guidance

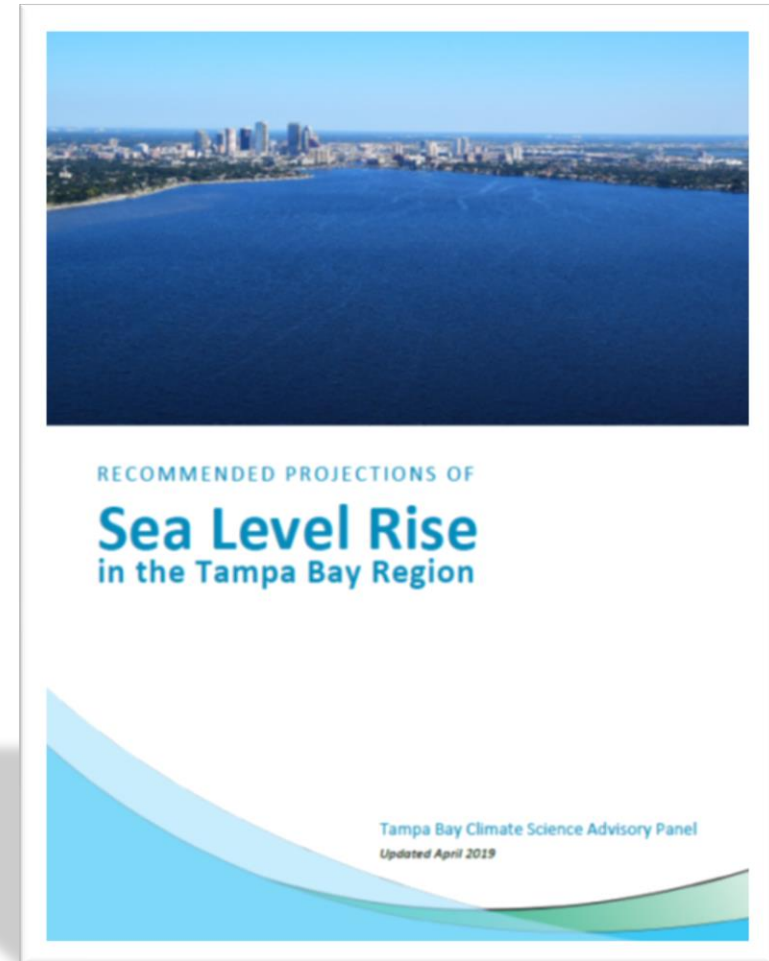
Overview of tool

Moving the tool to the web

Discussion

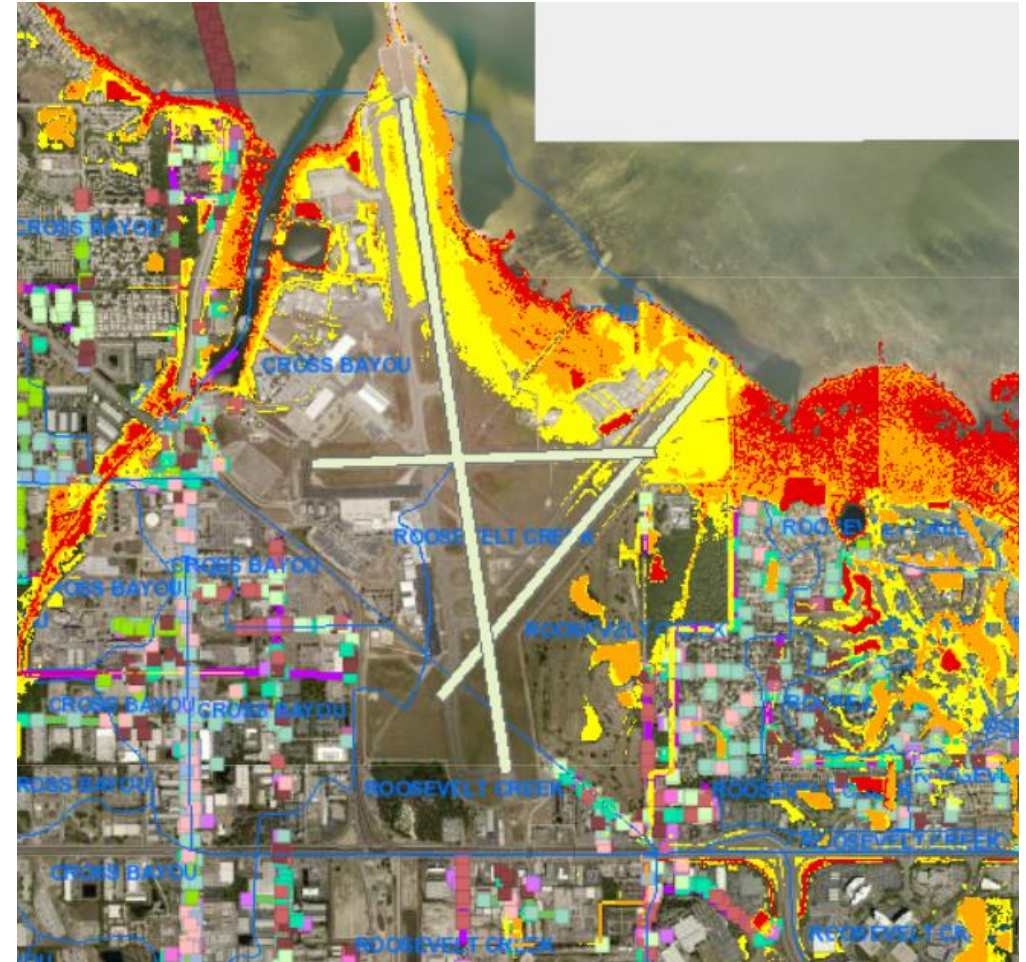
# Goal and current efforts

- To ensure county infrastructure projects are planned, designed, and constructed in a manner that acknowledges and moderates the risks associated with sea level rise and other coastal hazards.
- Applies to projects with a total cost of \$1M.
- Tool update (v.11) includes 2019 CSAP recommendations.
- Guidance document update in progress.



# Goal and current efforts

- **GIS viewer created; city and state asset layers are being added**
- **Tool is moving from Excel to web application**
- **County-wide vulnerability assessment of critical infrastructure in progress**
- **Incorporating the science into operational programs**

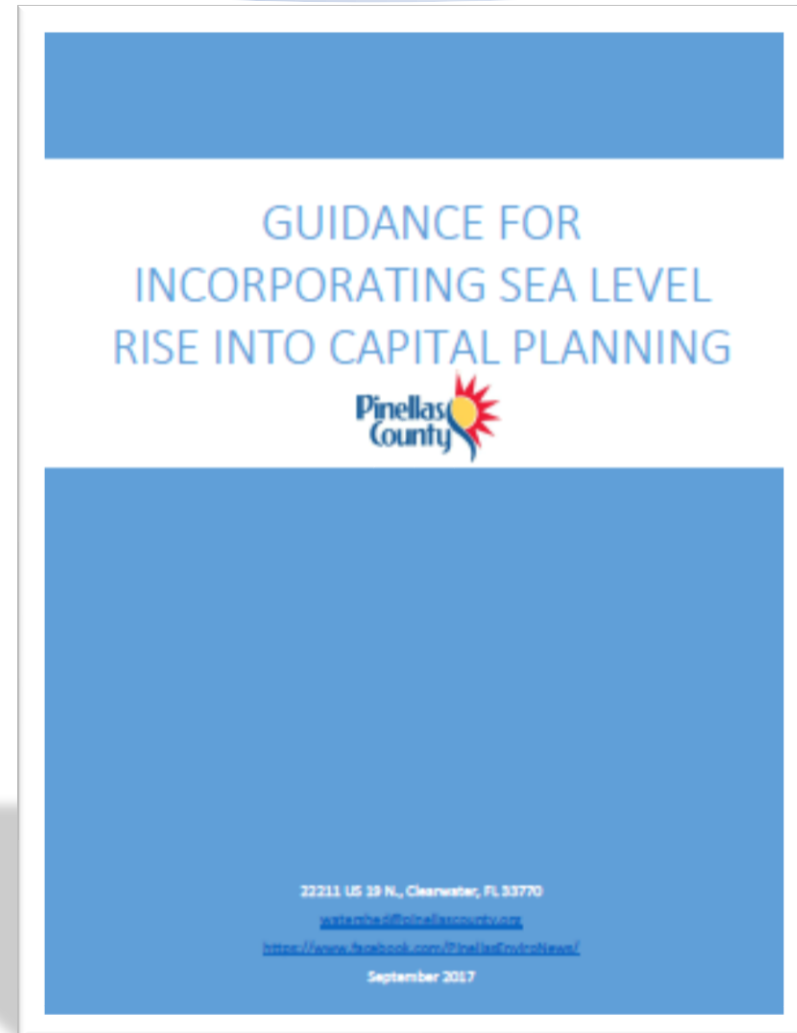




# Guidance

## Four key steps

- **Climate Science:** What is the current science and what are the local projections for SLR?
- **Vulnerability Assessment:** Which assets are exposed and sensitive to SLR? Is there adaptive capacity?
- **Risk Assessment:** Which assets are at greatest risk to SLR?
- **Adaptation Measures:** What can we do to improve the asset's resiliency to impacts from SLR?

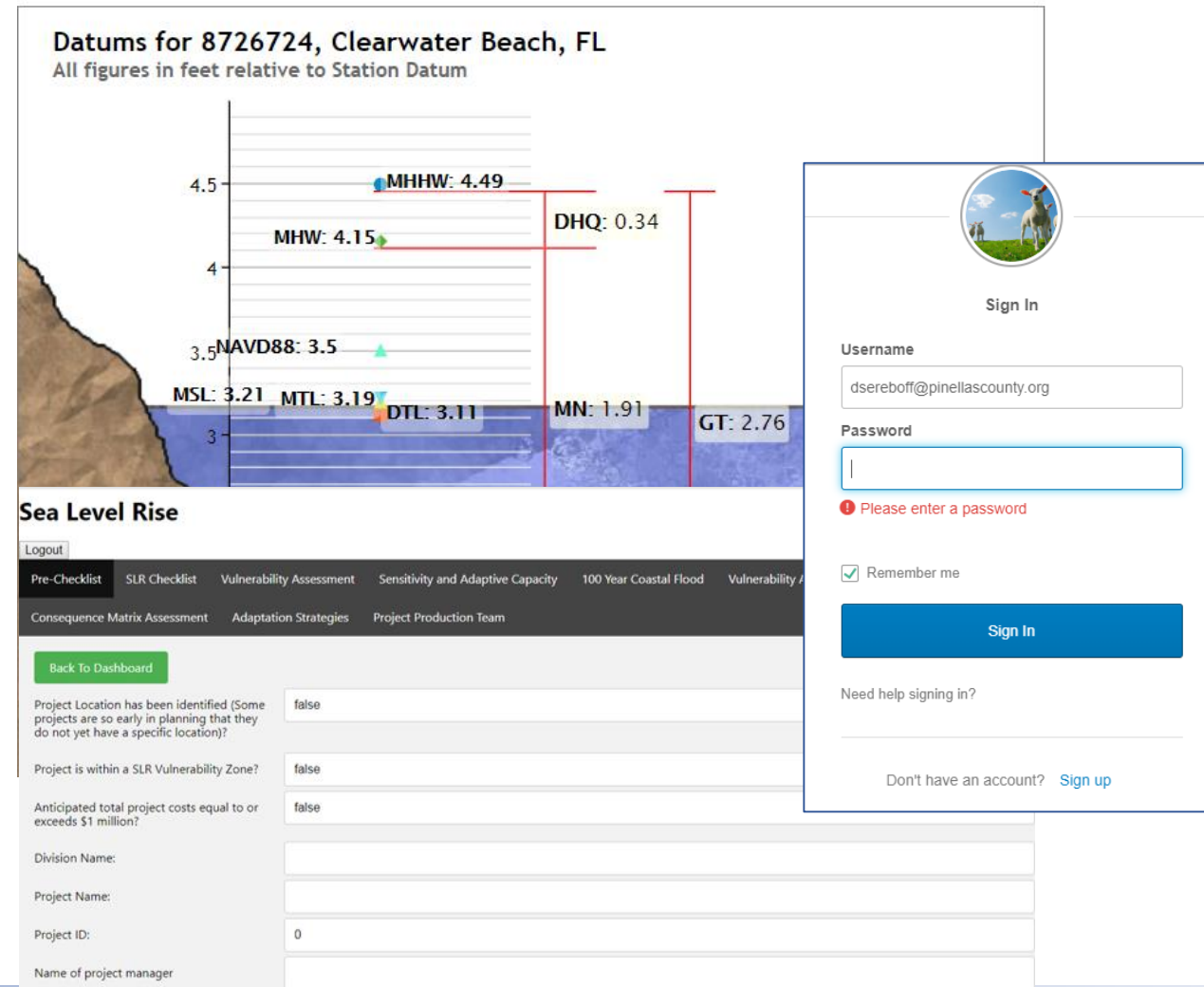




# Overview of Tool

# Moving the tool to the web

- **FDEP funded the SQL database development – COMPLETE**
- **Application is in development**
  - **Third party authentication**
  - **GIS integration – tide data, SLR projections**
  - **Guidance will be integrated**
  - **Tech support**
- **Need a name, ideas?**



**Datums for 8726724, Clearwater Beach, FL**  
All figures in feet relative to Station Datum

Datum	Value (feet)
MHHW	4.49
MHW	4.15
NAVD88	3.5
MSL	3.21
MTL	3.19
DTL	3.11
MN	1.91
GT	2.76
DHQ	0.34

**Sea Level Rise**

Logout

Pre-Checklist | SLR Checklist | Vulnerability Assessment | Sensitivity and Adaptive Capacity | 100 Year Coastal Flood | Vulnerability Assessment

Consequence Matrix Assessment | Adaptation Strategies | Project Production Team

[Back To Dashboard](#)

Project Location has been identified (Some projects are so early in planning that they do not yet have a specific location)?

Project is within a SLR Vulnerability Zone?

Anticipated total project costs equal to or exceeds \$1 million?

Division Name:

Project Name:

Project ID:

Name of project manager:

**Sign In**

Username:

Password:

**Please enter a password**

Remember me

**Sign In**

Need help signing in?

Don't have an account? [Sign up](#)



# Questions

Kelli Hammer Levy

[klevy@pinellascounty.org](mailto:klevy@pinellascounty.org)

<https://www.facebook.com/PinellasEnviroNews>