



Florida's First Line of Resilience

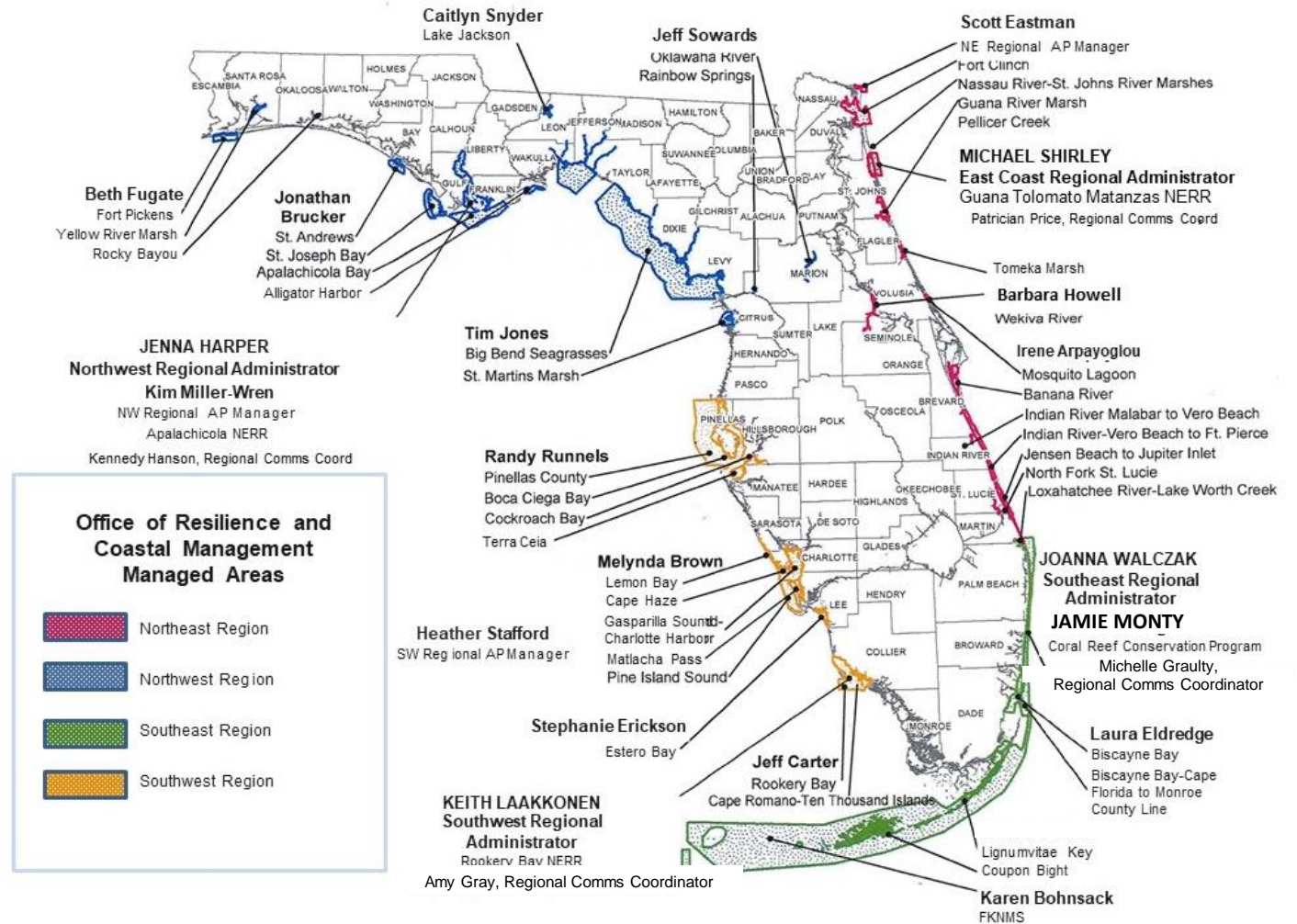
Kevin Claridge
Director

Office of Resilience & Coastal Protection



Office of Resilience and Coastal Protection

- Coastal Management Program
- 41 Aquatic Preserves
- 3 National Estuarine Research Reserves
- Coral Reef Conservation Program
- Florida Keys National Marine Sanctuary
- Offshore Program
- Clean Boating Program
- Resilient Coastlines Program





Coastal Resilience

Ocean, Gulf, Intracoastal, Rivers, Back Bays, etc.



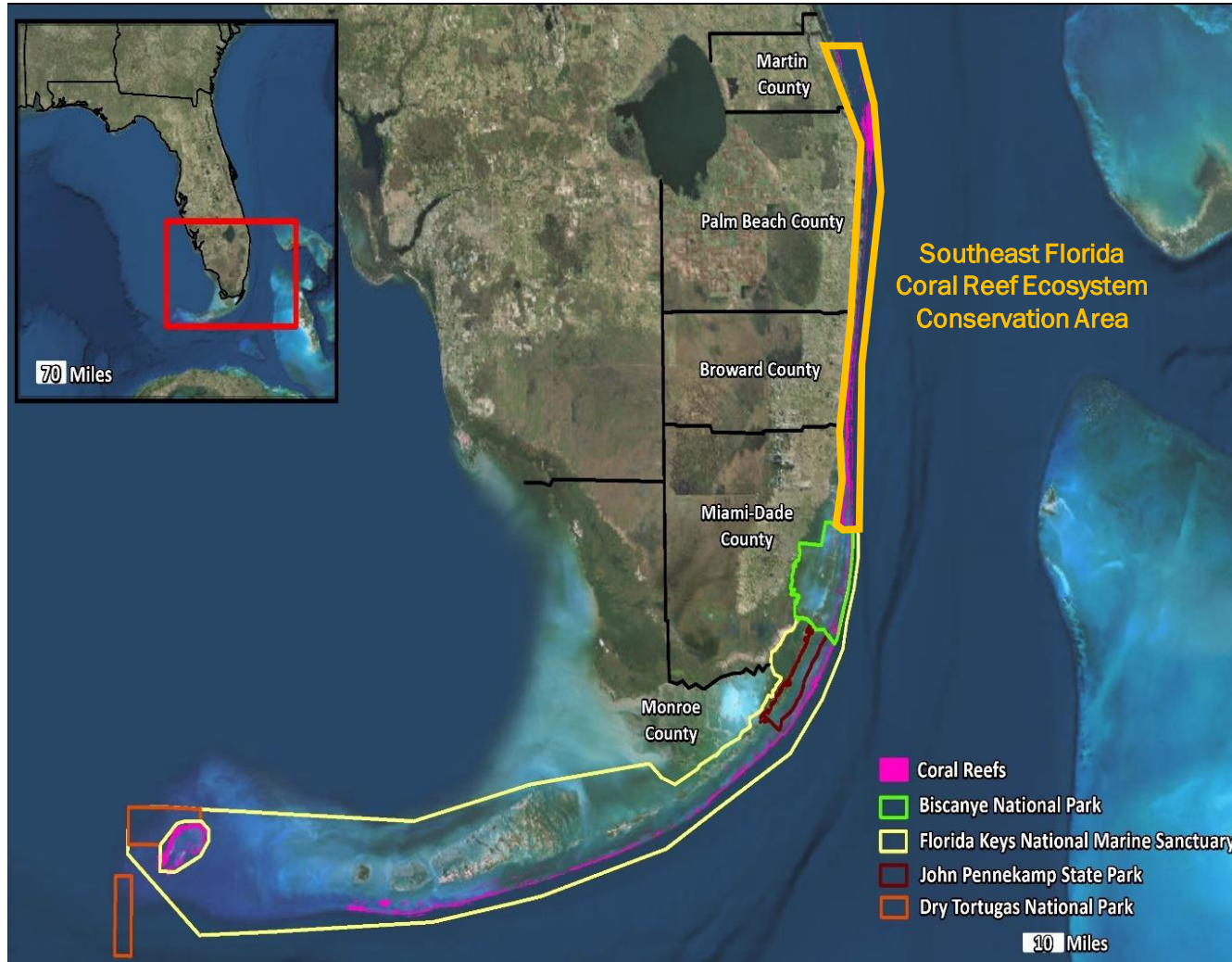


Protecting and Restoring Natural Resilience





Florida's Coral Reefs





Florida's National Treasure

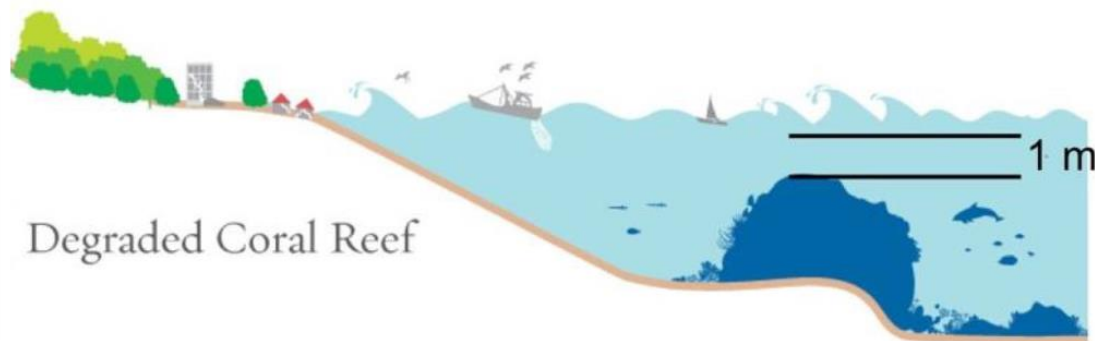
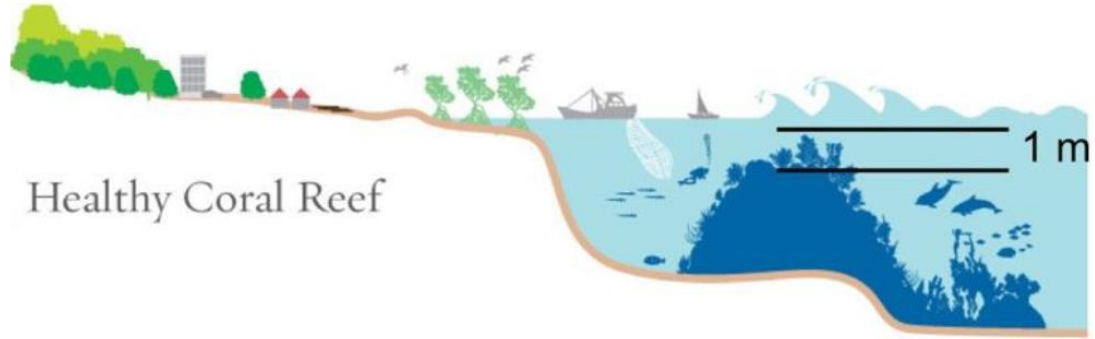
Ecologically Diverse and Economically Important





Economically Essential

Coastal Protection, Fishing, Tourism



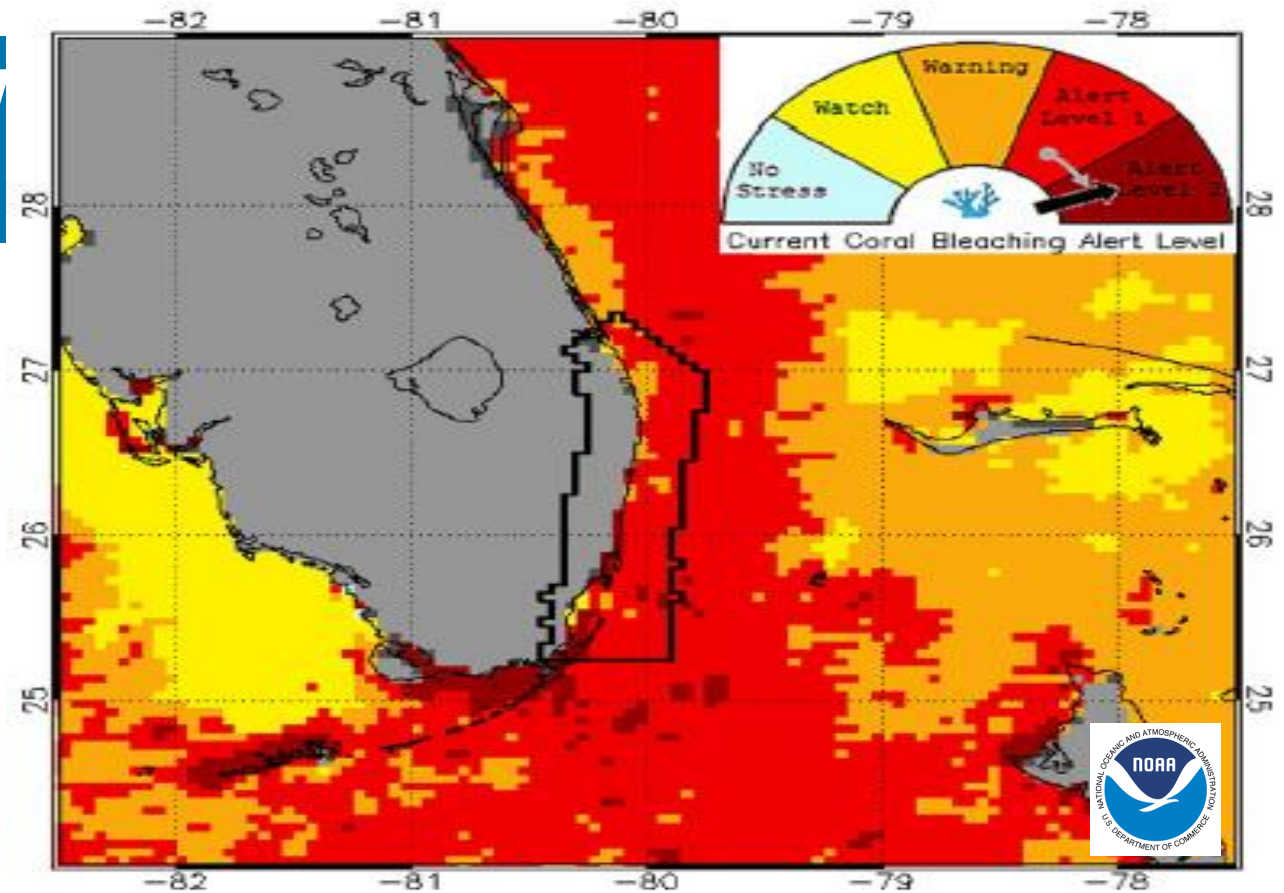
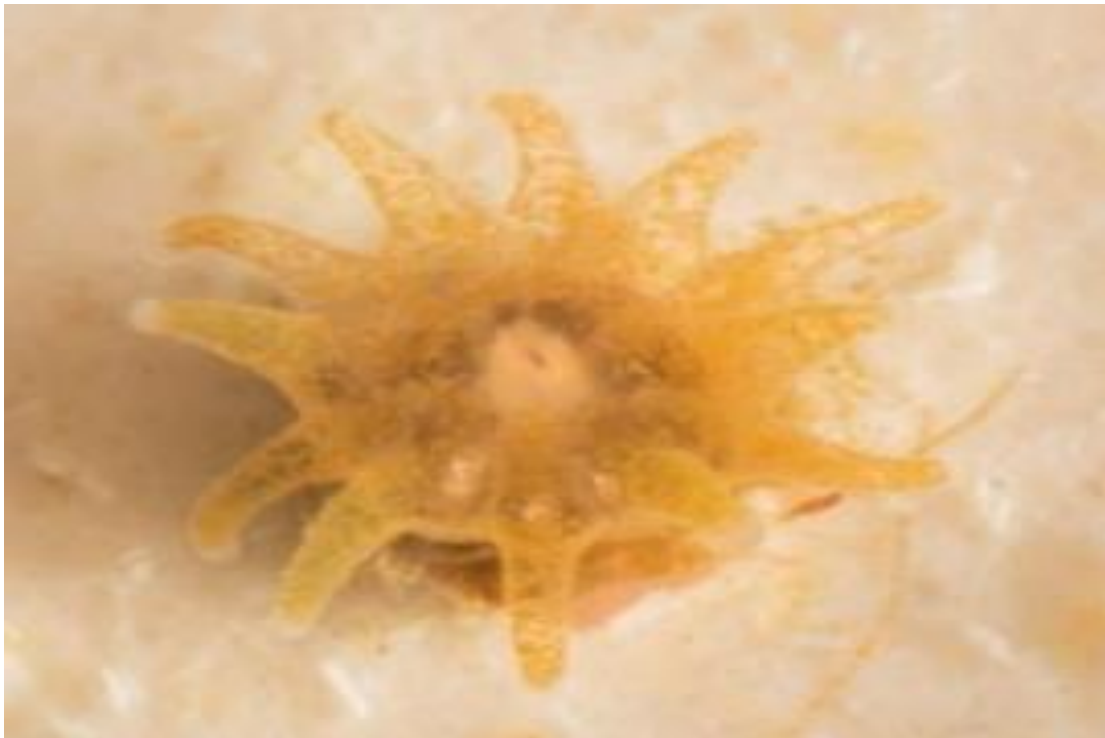
Images from: Mapping Ocean Wealth



Global Stressors

Increased frequency & severity of extreme thermal events

HOT & COLD



Ocean (& coastal) acidification



Local Stressors





Stony Coral Tissue Loss Disease

More than half of Florida's reef-building coral species are susceptible and disease is rapidly progressing





Disease Response Partners

Coordinated Multi-Faceted Response Effort

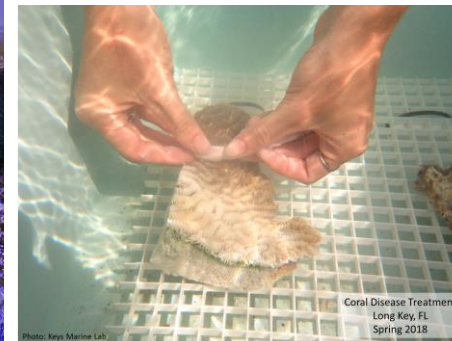
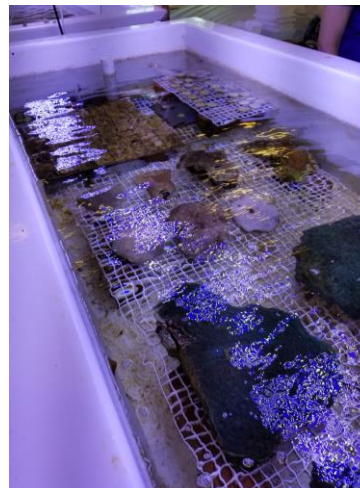
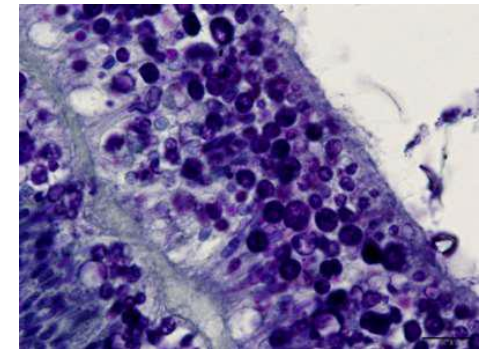
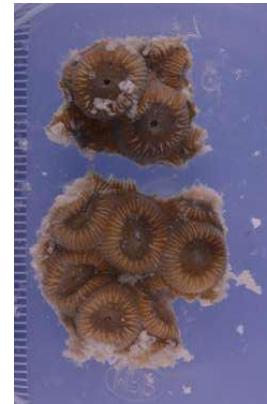
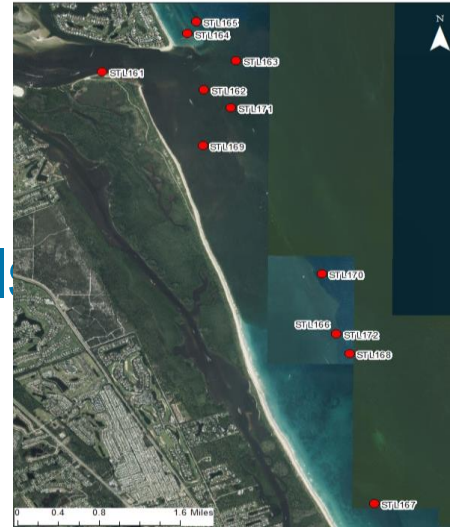




Technical Expert Response

November 2017 - July 2018 - Now

- Partner Response Framework
- Pathogen Research
- Rescue/Genetic Preservation
- Propagation and Restoration Trials
- Single and Colony Intervention
- Data Management and Citizen Engagement
- Water Quality Sampling





Kevin Claridge

Kevin.Claridge@FloridaDEP.gov