



MAP DIRECT PRACTICE EXERCISE

Stephanie Sunderman-Barnes

Division of Environmental Assessment and Restoration Florida
Department of Environmental Protection

Tallahassee, FL | November 5, 2025

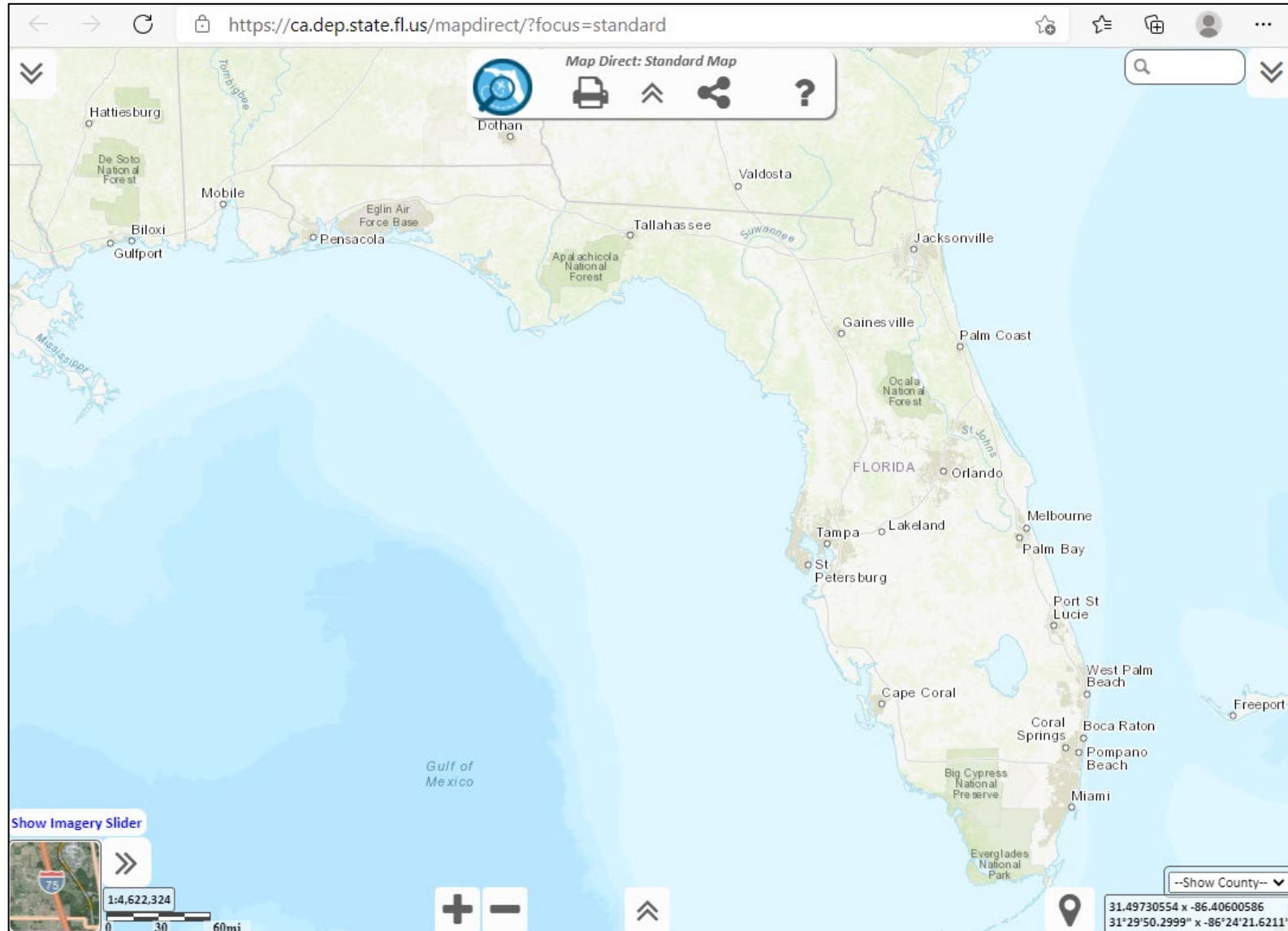


PRESENTATION OVERVIEW

- What is Map Direct?
- Open Map Direct from Generalized Water Information System (GWIS) Database Utilities.
- Display Status Network Sites on a Map.
- Explore Map Direct Interface.
- Explore Commonly Used Recon Tools.
- Save and Load Maps in Map Direct.
- Other Resources to Assist Your Recon.



WHAT IS MAP DIRECT?



Map Direct is an in-house developed, web-based, graphical mapping tool designed to assist users with data visualization and analysis.



WHAT CAN MAP DIRECT DO?

- Quickly display layers (no special software needed).
- Filter lists of features.
- Create customizable maps, export and save maps.
- Add layers from other online sources to map.
- Perform “what’s nearby” searches of other layers.
- Perform searches within polygon layers or buffer searches around a selected feature.

(See links provided at end of presentation
for additional Map Direct tutorials.)



LIMITATIONS OF MAP DIRECT

- Cannot perform advanced Geographic Information System (GIS) analyses.
- Cannot change symbology of layers.
- Cannot edit layers within the map.
- Limited support for adding offline data.
- Limited functionality on mobile devices.




PRACTICE EXERCISE:

ACCESS GWIS DATABASE UTILITIES

<https://prodapps.dep.state.fl.us/gwis/>

Florida Department of Environmental Protection

A-Z Index Forms News Events Contact Us

 About DEP How Do I Divisions Air Lands Parks & Rec Waste Water

GWIS
Div of Environmental Assessment and Restoration


Home Help **Login**

Hello, **Guest**

Please login to access gwis reports.

GWIS — 1.0.35

Florida Department of Environmental Protection — For Business Issues or for Technical Assistance, call Service Desk (850) 245-7555 or Contact Us via email

 **BUSINESS PORTAL** **DEP Portal**
Enterprise Solutions

[Register](#) | Already have an account? [Sign In](#)

[Home](#) | [Sign In](#) Search the Site:

Sign In

If you've already registered with the DEP sign in below. DEP employees may use their network username to sign-in.

E-mail Address*: (e.g., wile.e.coyote@domain.com OR coyote_we)

Password*:

[I forgot my password.](#)

If not, then [register](#).

[DEP Home](#) | [About DEP](#) | [Contact Us](#) | [Site Map](#)



PRACTICE EXERCISE

Click on
Recon
Tracking.

A screenshot of the GWIS (Generalized Water Information System) web application interface. The page has a dark blue header with the Florida Department of Environmental Protection logo and name on the left, and navigation links (A-Z Index, Forms, News, Events, Contact Us) and social media icons on the right. Below the header is a lighter blue banner with the GWIS logo and the text "Div of Environmental Assessment and Restoration". The main content area is white and contains a sidebar on the left with a dark grey background. The sidebar has a "Recon Tracking" link highlighted with a red circle. The main content area displays a "Hello," greeting, a welcome message to the Oracle Generalized Water Information System (OGWIS) Database Utilities Web Application, and instructions on how to use the application. The footer is dark blue and contains the text "GWIS — 1.0.35" and "Florida Department of Environmental Protection — For Business Issues or for Technical Assistance, call Service Desk (850) 245-7555 or Contact Us via email".

Florida Department of Environmental Protection

A-Z Index Forms News Events Contact Us

About DEP How Do I Divisions Air Lands Parks & Rec Waste Water

GWIS
Div of Environmental Assessment and Restoration

Home Help Logged in as :

Home

Recon Tracking

Existing Station

New SW Station

New GW Station

Hello,

Welcome to the Oracle Generalized Water Information System (OGWIS) Database Utilities Web Application.

This application is used to maintain the OGWIS database. Users include the staff working for the Watershed Monitoring and Data Management Section of the Florida Department of Environmental Protection (FDEP), the Florida Water Management Districts, and County Agencies.

Specific instructions concerning the use of this application are found in the Watershed Monitoring and Data Management Section's document Data Management Protocols Version 2.

If you have questions concerning the general use of the application, please contact your FDEP Project Manager.

GWIS — 1.0.35

Florida Department of Environmental Protection — For Business Issues or for Technical Assistance, call Service Desk (850) 245-7555 or Contact Us via email



PRACTICE EXERCISE

Enter Recon Tracking Search Criteria

Resource Type = Large Lake

Reporting Unit = Zone 5

Reporting Cycle = 19 (2025)

Site Location Range = 1 to 20

Click “View Results.”

Recon Tracking

Resource Type:

Reporting Unit:

Reporting Cycle:


Site Location Range: -

Leave empty to return all records if creating an export file.
If creating a map for more than one site, limit range to less than 140 sites.



PRACTICE EXERCISE

Click
"Show Map"

[About DEP](#) [How Do I](#) [Divisions](#) [Air](#) [Lands](#) [Parks & Rec](#) [Waste](#) [Water](#)

GWIS
Div of Environmental Assessment and Restoration

Home Help Logged in as

◀

Home

Recon Tracking

Existing Station

New SW Station

New GW Station

Recon Tracking Results

Selection Criteria:
Resource Type = LARGE LAKE; Reporting Unit = Zone 5; Reporting Cycle = 19; Lower Range = 1; Upper Range = 20;

Show Map CSV

RANDOM SAMPLE LOCATION	LATITUDE	LONGITUDE	SAMPLEABLE	STATION ID
Z5-LL-19001	27° 41' 53.4737015"	81° 25' 2.70316"	N/A	
Z5-LL-19002	27° 54' 10.5777998"	81° 17' 28.5958004"	N/A	
Z5-LL-19003	28° 17' 2.8967299"	81° 23' 58.7694016"	N/A	
Z5-LL-19004	28° 26' 41.3039017"	81° 30' 32.3023987"	N/A	



EXPLORE MAP DIRECT INTERFACE:

CHEVRON BUTTONS EXPAND AND HIDE MENUS



The screenshot displays the Map Direct: Generalized Water Information System interface. Several chevron buttons are highlighted with red circles to indicate their expand/collapse functionality:

- Top Left:** A double-down chevron button (collapse) is circled in red, located above the "CHANGE MAP LAYERS" panel.
- Top Center:** A double-up chevron button (expand) is circled in red, located in the top toolbar.
- Bottom Left:** A double-right chevron button (expand) is circled in red, located in the bottom toolbar.
- Bottom Center:** A double-up chevron button (expand) is circled in red, located in the bottom toolbar.
- Top Right:** A double-up chevron button (expand) is circled in red, located in the top right corner of the interface.

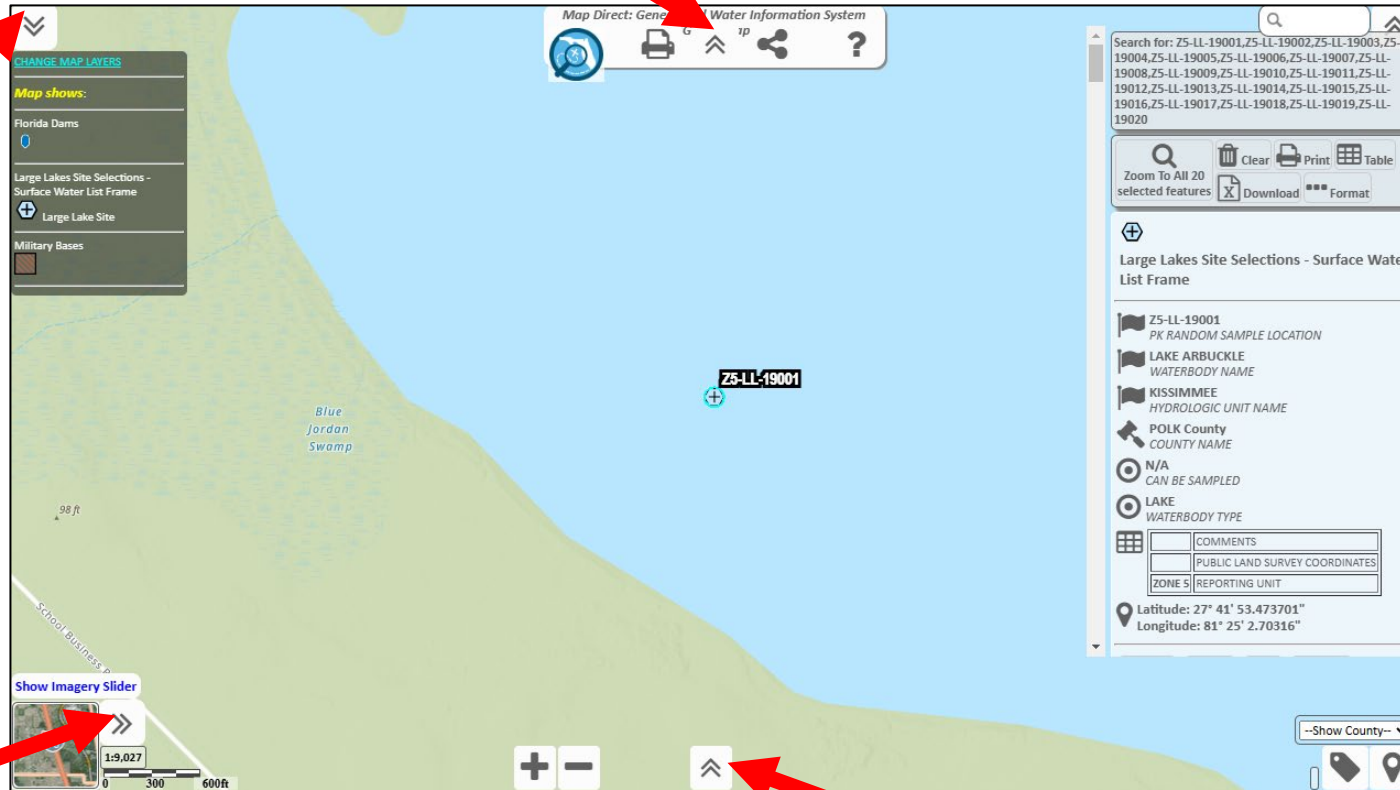
The interface includes a map of a lake area with a label "Z5-LL-19001" and a point marker. A sidebar on the left lists map layers: "Florida Dams", "Large Lakes Site Selections - Surface Water List Frame", "Large Lake Site", and "Military Bases". A search bar at the top right contains a list of site IDs. A detailed information panel on the right shows data for "Z5-LL-19001", including "PK RANDOM SAMPLE LOCATION", "LAKE ARBUCKLE", "WATERBODY NAME", "KISSIMMEE", "HYDROLOGIC UNIT NAME", "POLK County", "COUNTY NAME", "N/A", "CAN BE SAMPLED", "LAKE", "WATERBODY TYPE", and coordinates: "Latitude: 27° 41' 53.473701\"", "Longitude: 81° 25' 2.70316\"".



MAP DIRECT MENUS

Save/Load/Share Maps; Map Direct Help.

Show Map Legend;
Table of Contents:
Layer Visibility and
Labels;
Add Data to Map.



Search
Options;
View
Feature
Attributes.

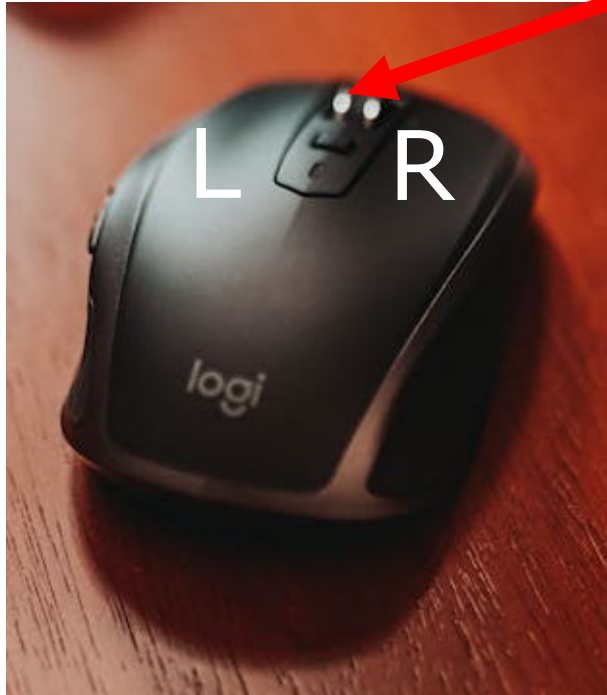
Change Basemaps; Switch between
Basemap and Imagery Slider.

Navigation and Selection Tools:
Bookmarks; Zoom Tools; Identify;
Measurement Tools; Drawing Tools.



EXPLORE MAP DIRECT INTERFACE:

MOUSE BUTTON INTERACTIONS



Center button (wheel)

- Use wheel to zoom in or out of the map.
- Click and hold to pan the map.

Left button (L)

- Click chevron to hide or unhide a tool.
- Click map features to identify them.
- Click and hold to pan the map.

Right button (R)

- Click and hold to pan the map.
- Click an item in the contents panel to open the layer tools menu.



EXPLORE MAP DIRECT INTERFACE:

TOUCH SCREEN INTERACTION FOR TABLETS



(NOTE – Some touch screen interactions and tools do not work when viewing Map Direct on smartphones.)

Pinch

- Zoom in or out of the map.

Touch

- Hide or unhide a tool.
- Identify a feature.

Touch and Drag

- Pan the map.
- Draw search boxes.

Double Touch

- Zoom in on an area of the map.
- Open the layer tools menu by interacting with an item in the contents panel.

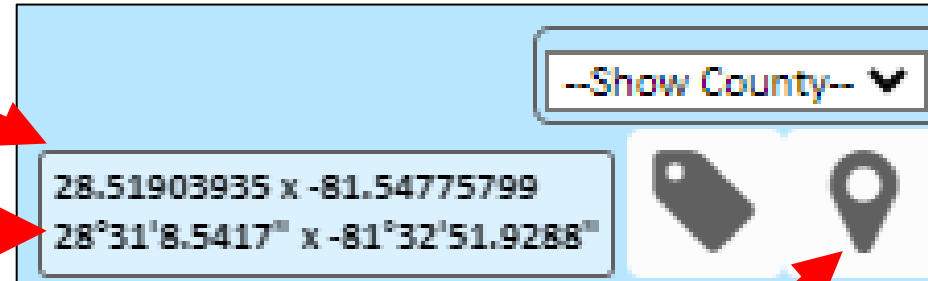


EXPLORE MAP DIRECT INTERFACE:

COORDINATES OF MOUSE POINTER

Latitude, Longitude
(Decimal Degrees)

Latitude, Longitude
(Degrees, Minutes and
Decimal Seconds)



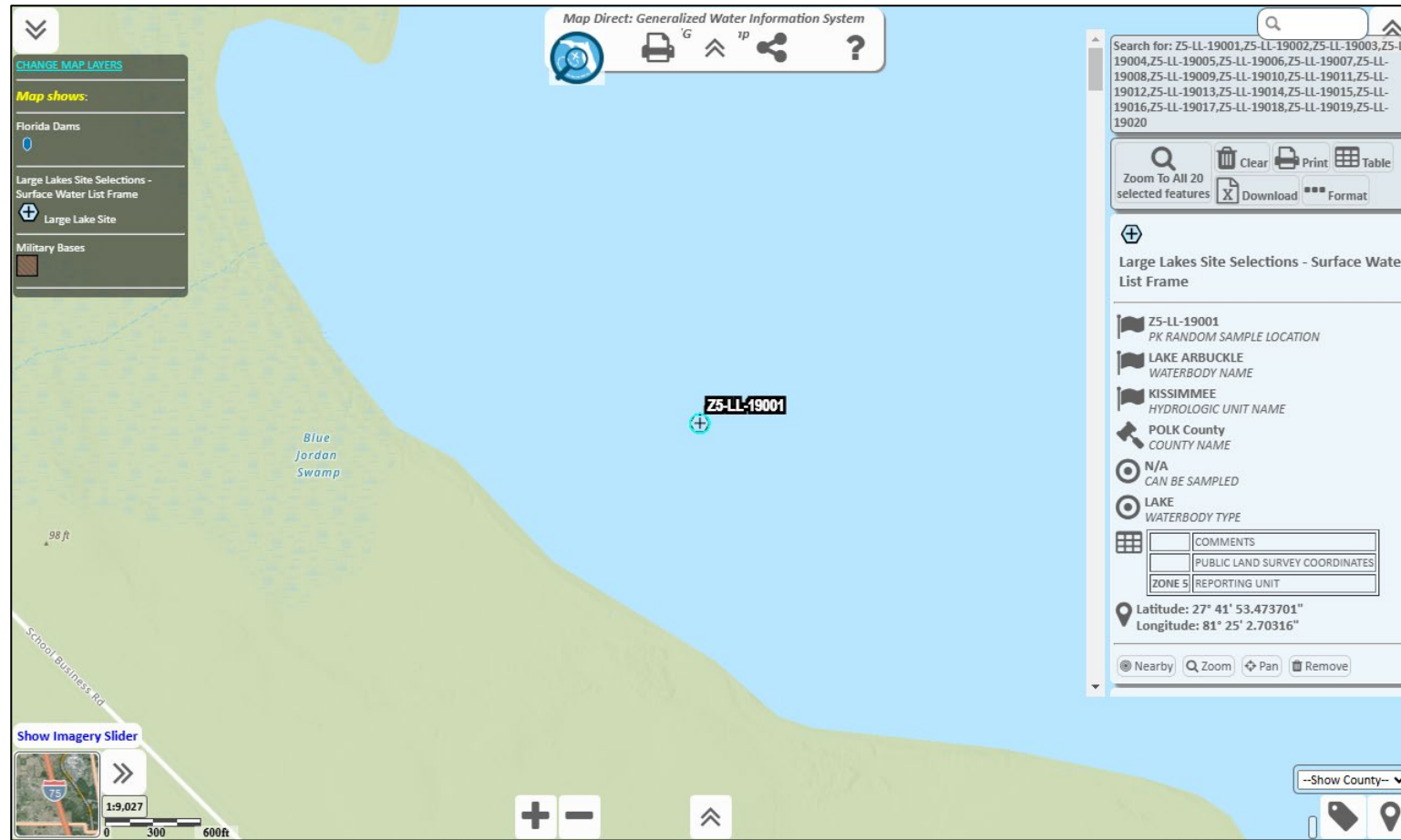
Map Pointer Drop Symbol

- Display identifies the location of your mouse pointer on the Map.
- Use the map pointer drop symbol tool to drop a marker on the map location of interest. The location details window will open, and additional search options will be available.



EXPLORE COMMONLY USED RECON TOOLS

Please Refresh Your Internet Browser to Return to Original View of Z5 LL, Cycle 19 Search Results.



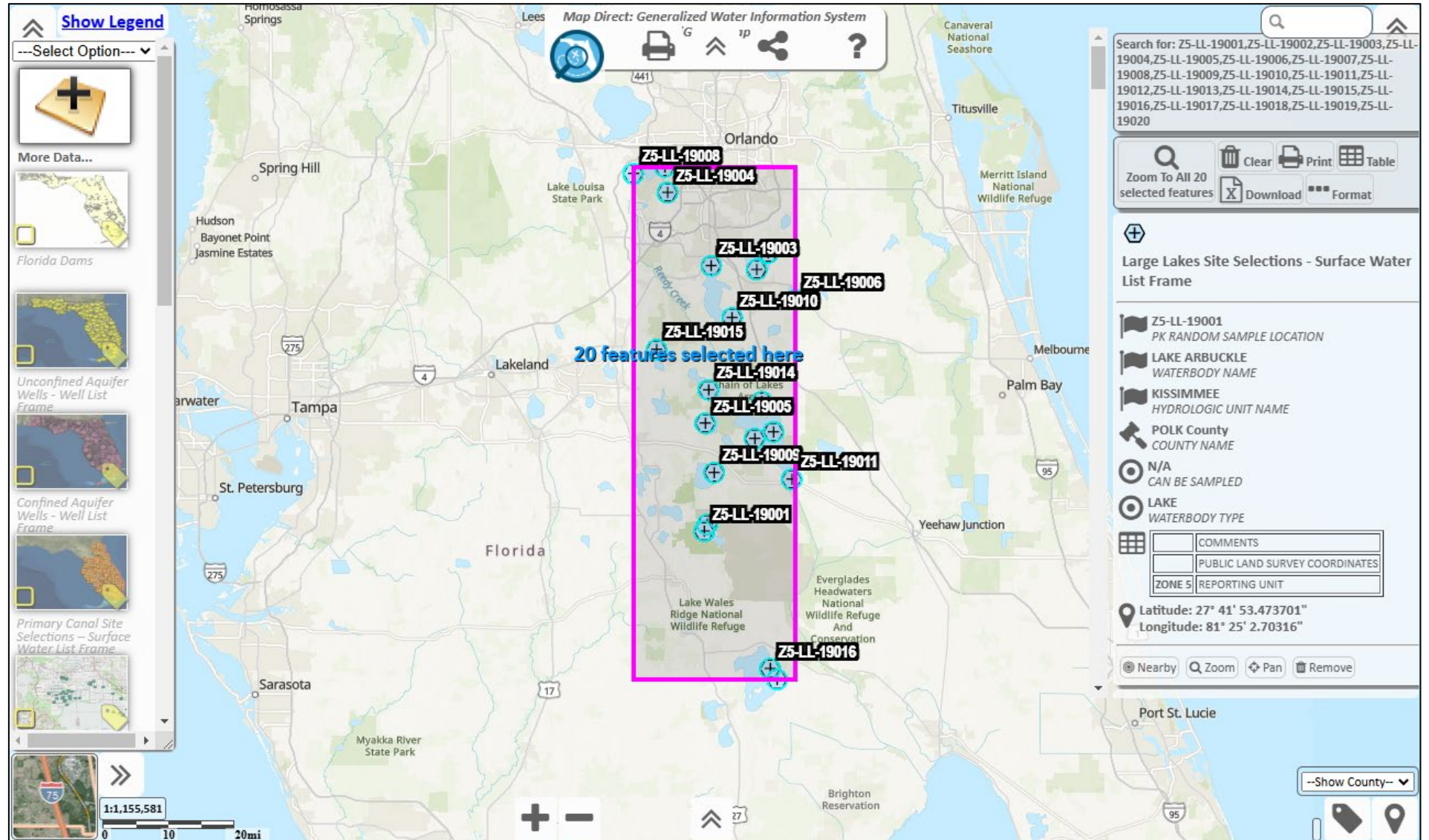




COMMON RECON TOOLS:

ZOOM TO ALL SITES

Zone 5
Large Lakes
Cycle 19,
Sites 1 to 20.



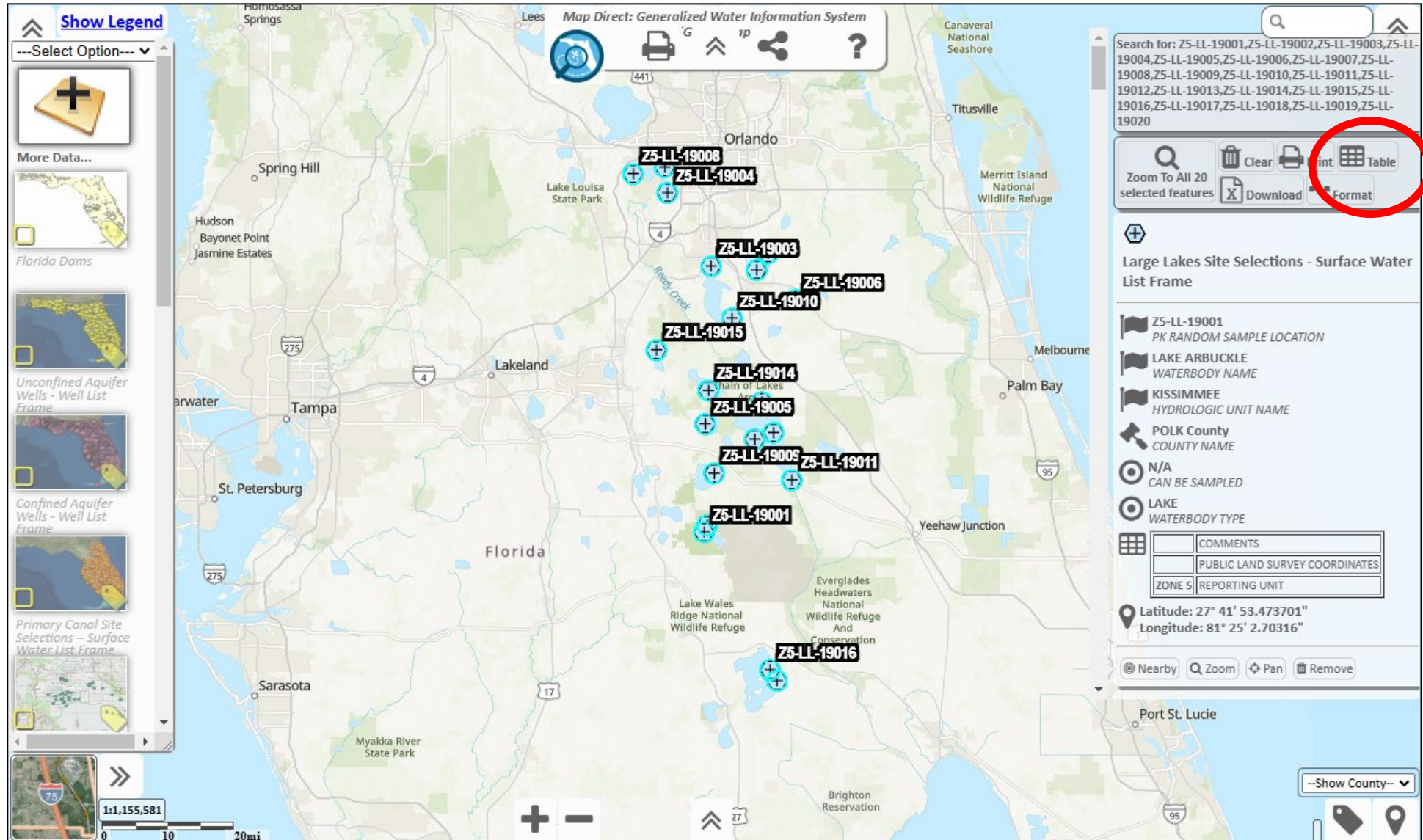




TABLE VIEW

Click
column
name
to sort.

Large Lake Site Selections - Surface Water List Frame: 20 found.									
	PK RANDOM SAMPLE LOCATION (String)	REPORTING UNIT (String)	WATERBODY TYPE (String)	WATERBODY NAME (String)	CAN BE SAMPLED (String)	LAT_DD (Double)	LAT_MM (Double)	LAT_SS (Double)	LONG_DD (Double)
	Primary key	One of the six geographic zones used for data analysis. Zones correspond to WMS boundaries, except for South Florida which is split into an east and west subunits. For cycle two of the status network see TMDL_BASIN database field name	The name identifying the type of the water body on which the station is located. The designation 'stream' includes canals, rivers, and sloughs. The designation 'lake' includes some marshes. Dictates which Impaired Water Rule (IWR) assessment procedure to use.	Legal or USGS quad (DRG) name of the water body on which the station resides	Boolean value indicating whether site is samplable	The degrees portion of the angular distance on a meridian north or south of the equator	The minutes portion of the angular distance on a meridian north or south of the equator.	The seconds portion to four significant digits of the angular distance on a meridian north or south of the equator	The degrees portion of the angular distance on a meridian east or west of the prime meridian. Although measurements west of the prime meridian are by convention regarded as negative, the standard provides for the storage of positive values to conform to current practice.
Remove	Z5-LL-19001	ZONE 5	LAKE	LAKE ARBUCKLE	N/A	27	41	53.473701	81
Remove	Z5-LL-19002	ZONE 5	LAKE	LAKE KISSIMMEE	N/A	27	54	10.5778	81
Remove	Z5-LL-19003	ZONE 5	LAKE	LAKE TOHOPEKALIGA	N/A	28	17	2.89673	81
Remove	Z5-LL-19004	ZONE 5	LAKE		N/A	28	26	41.303902	81
Remove	Z5-LL-19005	ZONE 5	LAKE	LAKE ROSALIE	N/A	27	56	12.109	81
Remove	Z5-LL-19006	ZONE 5	LAKE	ALLIGATOR LAKE	N/A	28	12	35.165699	81
Remove	Z5-LL-19007	ZONE 5	LAKE	EAST LAKE TOHOPEKALIGA	N/A	28	16	32.131699	81
Remove	Z5-LL-19008	ZONE 5	LAKE		N/A	28	29	10.4425	81
Remove	Z5-LL-19009	ZONE 5	LAKE	LAKE WEOHYAKAPKA	N/A	27	49	41.474201	81
Remove	Z5-LL-19010	ZONE 5	LAKE	LAKE TOHOPEKALIGA	N/A	28	10	9.12725	81
Remove	Z5-LL-19011	ZONE 5	LAKE	LAKE KISSIMMEE	N/A	27	48	47.670601	81
Remove	Z5-LL-19012	ZONE 5	LAKE	LAKE ISTOKPOGA	N/A	27	22	9.47002	81
Remove	Z5-LL-19013	ZONE 5	LAKE	LAKE KISSIMMEE	N/A	27	55	4.77608	81
Remove	Z5-LL-19014	ZONE 5	LAKE	LAKE HATCHINEHA	N/A	28	0	38.057999	81
Remove	Z5-LL-19015	ZONE 5	LAKE	LAKE MARION	N/A	28	5	57.049702	81
Remove	Z5-LL-19016	ZONE 5	LAKE	LAKE ISTOKPOGA	N/A	27	23	37.014099	81
Remove	Z5-LL-19017	ZONE 5	LAKE	LAKE ARBUCKLE	N/A	27	42	48.5565	81
Remove	Z5-LL-19018	ZONE 5	LAKE	LAKE KISSIMMEE	N/A	27	59	4.53651	81
Remove	Z5-LL-19019	ZONE 5	LAKE	EAST LAKE TOHOPEKALIGA	N/A	28	18	44.298	81
Remove	Z5-LL-19020	ZONE 5	LAKE	LAKE DOWN	N/A	28	30	4.90749	81



TABLE VIEW

Click on a row to
return to map
and zoom to site.

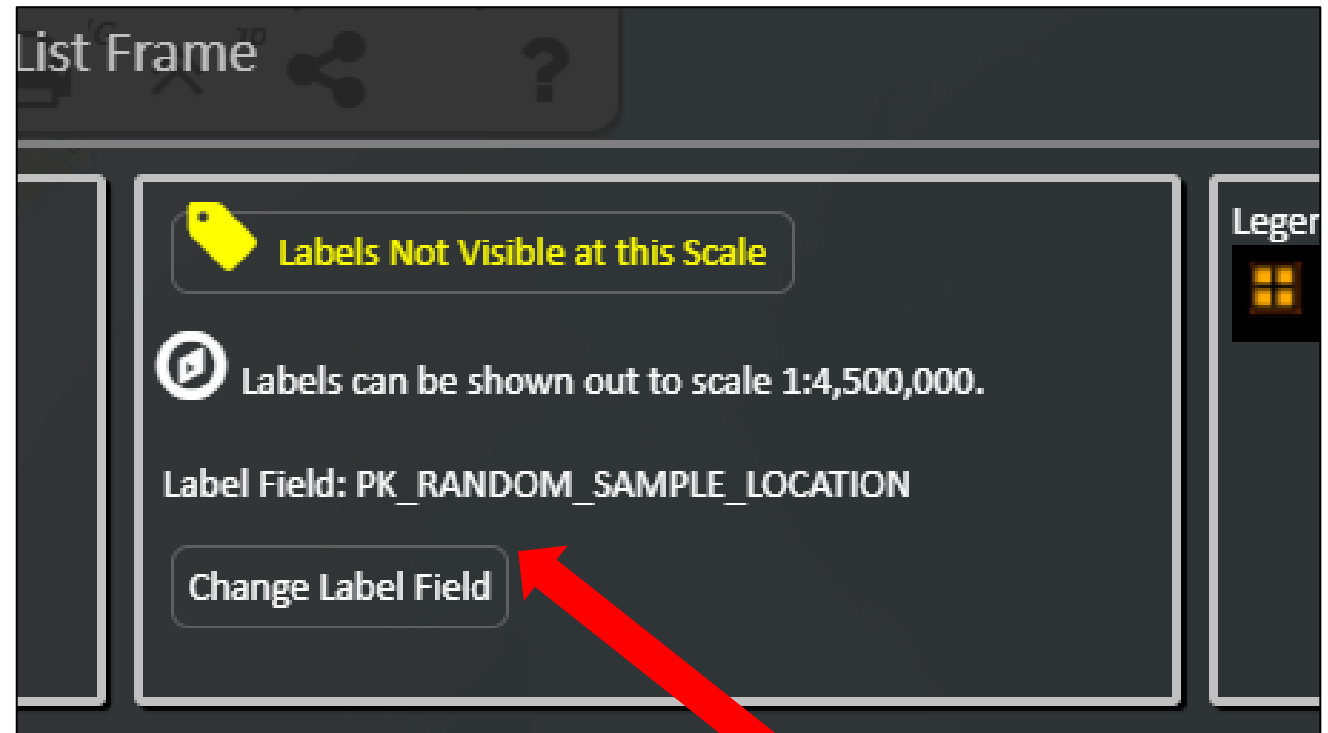
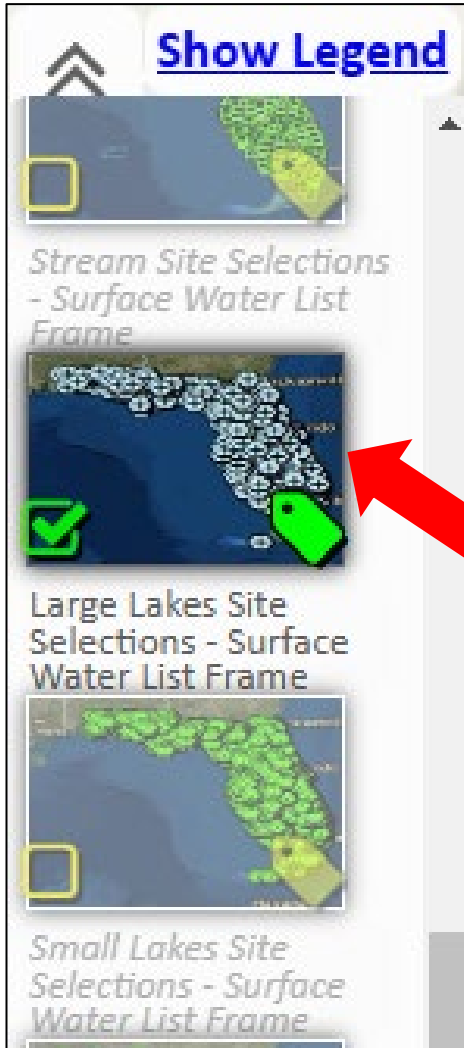
Example:
Z5-LL-19008

Large Lakes Site Selections - Surface Water List Frame: 20 found.									
	PK RANDOM SAMPLE LOCATION (String)	REPORTING UNIT (String)	WATERBODY TYPE (String)	WATERBODY NAME (String)	CAN BE SAMPLED (String)	LAT_DD (Double)	LAT_MM (Double)	LAT_SS (Double)	
	Primary key	One of the six geographic zones used for data analysis. Zones correspond to WMS boundaries, except for South Florida which is split into an east and west subunits. For cycle two of the status network see TMDL_BASIN database field name	The name identifying the type of the water body on which the station is located. The designation 'stream' includes canals, rivers, and sloughs. The designation 'lake' includes some marshes. Dictates which Impaired Water Rule (IWR) assessment procedure to use.	Legal or USGS quad (DRG) name of the water body on which the station resides	Boolean value indicating whether site is samplable	The degrees portion of the angular distance on a meridian north or south of the equator	The minutes portion of the angular distance on a meridian north or south of the equator.	The seconds portion to four significant digits of the angular distance on a meridian north or south of the equator	The angular distance east or west of the meridian measured in prime meridian convention for the value
Remove	Z5-LL-19001	ZONE 5	LAKE	LAKE ARBUCKLE	N/A	27	41	53.473701	81
Remove	Z5-LL-19002	ZONE 5	LAKE	LAKE KISSIMMEE	N/A	27	54	10.5778	81
Remove	Z5-LL-19003	ZONE 5	LAKE	LAKE TOHOPEKALIGA	N/A	28	17	2.89673	81
Remove	Z5-LL-19004	ZONE 5	LAKE		N/A	28	26	41.303902	81
Remove	Z5-LL-19005	ZONE 5	LAKE	LAKE ROSALIE	N/A	27	56	12.109	81
Remove	Z5-LL-19006	ZONE 5	LAKE	ALLIGATOR LAKE	N/A	28	12	35.165699	81
Remove	Z5-LL-19007	ZONE 5	LAKE	EAST LAKE TOHOPEKALIGA	N/A	28	16	32.131699	81
Remove	Z5-LL-19008	ZONE 5	LAKE		N/A	28	29	10.4425	81
Remove	Z5-LL-19009	ZONE 5	LAKE	LAKE WEOHYAKAPKA	N/A	27	49	41.474201	81
Remove	Z5-LL-19010	ZONE 5	LAKE	LAKE TOHOPEKALIGA	N/A	28	10	9.12725	81
Remove	Z5-LL-19011	ZONE 5	LAKE	LAKE KISSIMMEE	N/A	27	48	47.670601	81
Remove	Z5-LL-19012	ZONE 5	LAKE	LAKE ISTOKPOGA	N/A	27	22	9.47002	81
Remove	Z5-LL-19013	ZONE 5	LAKE	LAKE KISSIMMEE	N/A	27	55	4.77608	81
Remove	Z5-LL-19014	ZONE 5	LAKE	LAKE HATCHINEHA	N/A	28	0	38.057999	81
Remove	Z5-LL-19015	ZONE 5	LAKE	LAKE MARION	N/A	28	5	57.049702	81
Remove	Z5-LL-19016	ZONE 5	LAKE	LAKE ISTOKPOGA	N/A	27	23	37.014099	81
Remove	Z5-LL-19017	ZONE 5	LAKE	LAKE ARBUCKLE	N/A	27	42	48.5565	81
Remove	Z5-LL-19018	ZONE 5	LAKE	LAKE KISSIMMEE	N/A	27	59	4.53651	81
Remove	Z5-LL-19019	ZONE 5	LAKE	EAST LAKE TOHOPEKALIGA	N/A	28	18	44.298	81
Remove	Z5-LL-19020	ZONE 5	LAKE	LAKE DOWN	N/A	28	30	4.90749	81



COMMON RECON TOOLS:

CHANGE SITE LABELS



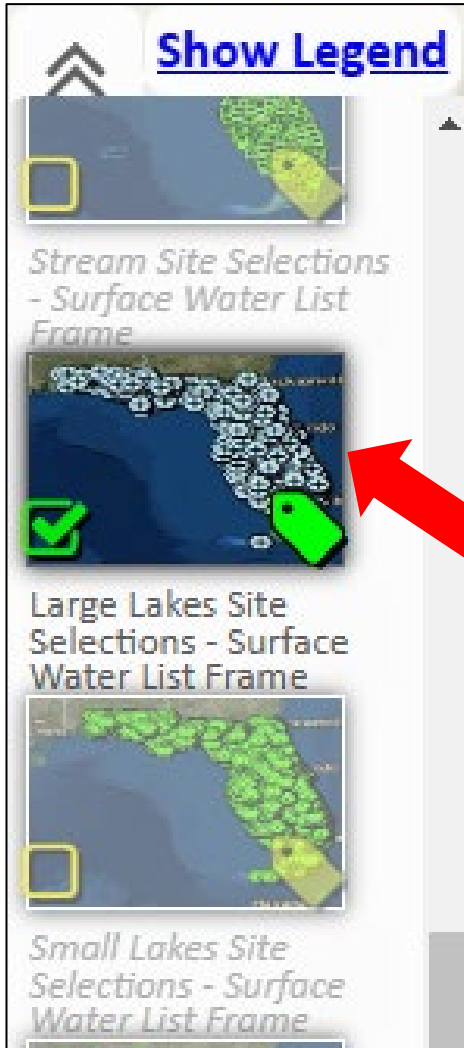
Double click the Large Lakes Site selections tile with left mouse button (Double Touch for touch screen devices.).

In Layer Properties Menu, Select "Change Label Field."



COMMON RECON TOOLS:

CHANGE FILTERS FOR DATA DISPLAYED



Double click the Large Lakes Site selections tile with left mouse button (Double Touch for touch screen devices.).



In Layer Properties Menu, Locate Filtering Tools. Click "Remove Filter" to clear current list of sites.



COMMON RECON TOOLS:

CHANGE FILTERS FOR DATA DISPLAYED



Click “Add Filter”.

In the filtering options menu:

- Select PK_RANDOM_SAMPLE_LOCATION as the field to filter on.
- In the text box, type the site name (use all capital letters and include the hyphens), or type multiple site names with a pipe character between each site.
Example: Z5-LL-19004|Z5-LL-19008
- Click “Set Filter”.

Large Lakes Site Selections - Surface Water List Frame

Choose a field to filter on:
PK_RANDOM_SAMPLE_LOCATION ▼

Alphanumeric (String)
Exact Match Filter:

- Type a field value in the text box to show only that feature on the map
- You may include multiple values by separating them with a pipe |
- Click Get Samples to get sample values in a drop down. PLEASE NOTE - Internet Explorer may crash when trying to do this for fields with thousands of values
- You can choose a sample from the drop down to add it to the filter
- For String fields only - Check the 'Near Match' box to make the filter match any value containing the entered values. Example - 'Z2-SS-14' would match 'Z2-SS-14001' and 'Z2-SS-14199'
- Click Set Filter to apply the filter
- Click Cancel to abort

Z5-LL-19008

Get Samples

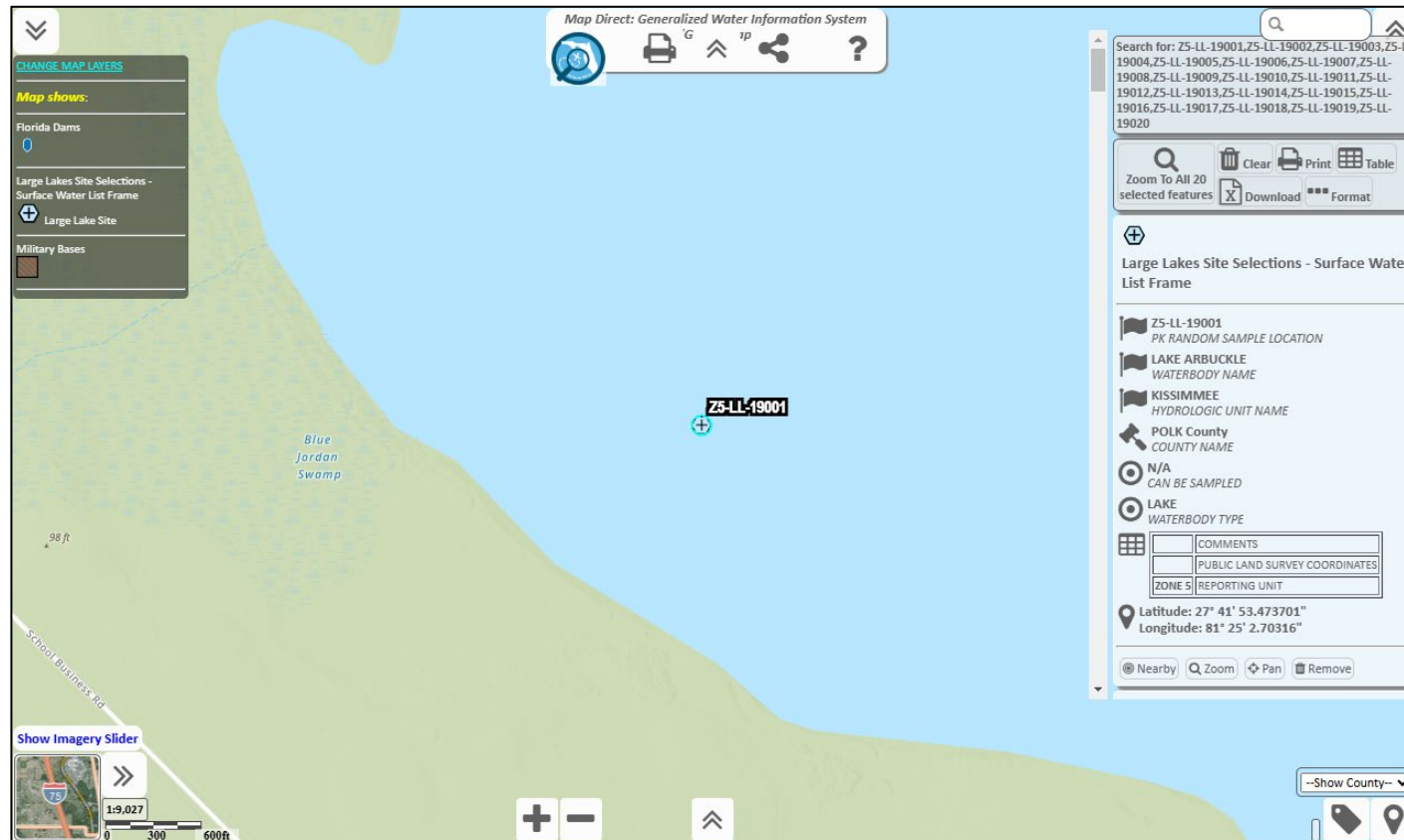
Near Match ☐

Set Filter Cancel



EXPLORE COMMONLY USED RECON TOOLS

After practicing changing labels and filters, please refresh your internet browser again to return to the original view of Z5 LL, Cycle 19 Search Results.

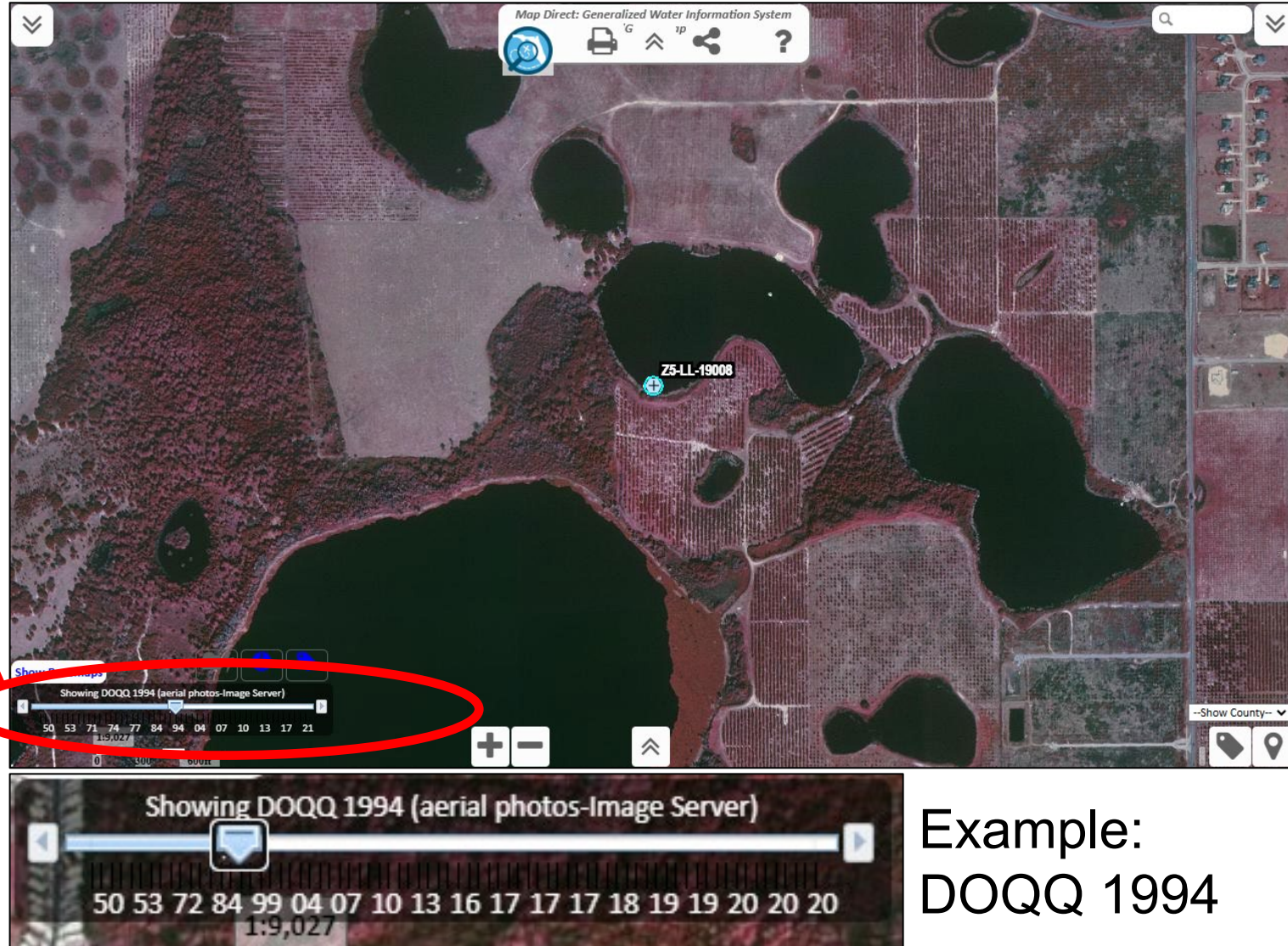
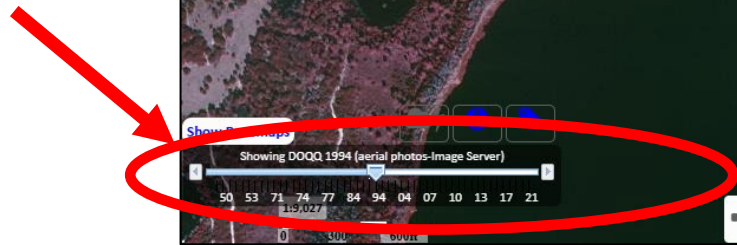




COMMON RECON TOOLS:

EXAMINE IMAGERY FROM MULTIPLE YEARS

Click “Show Imagery Slider.”



Example:
DOQQ 1994

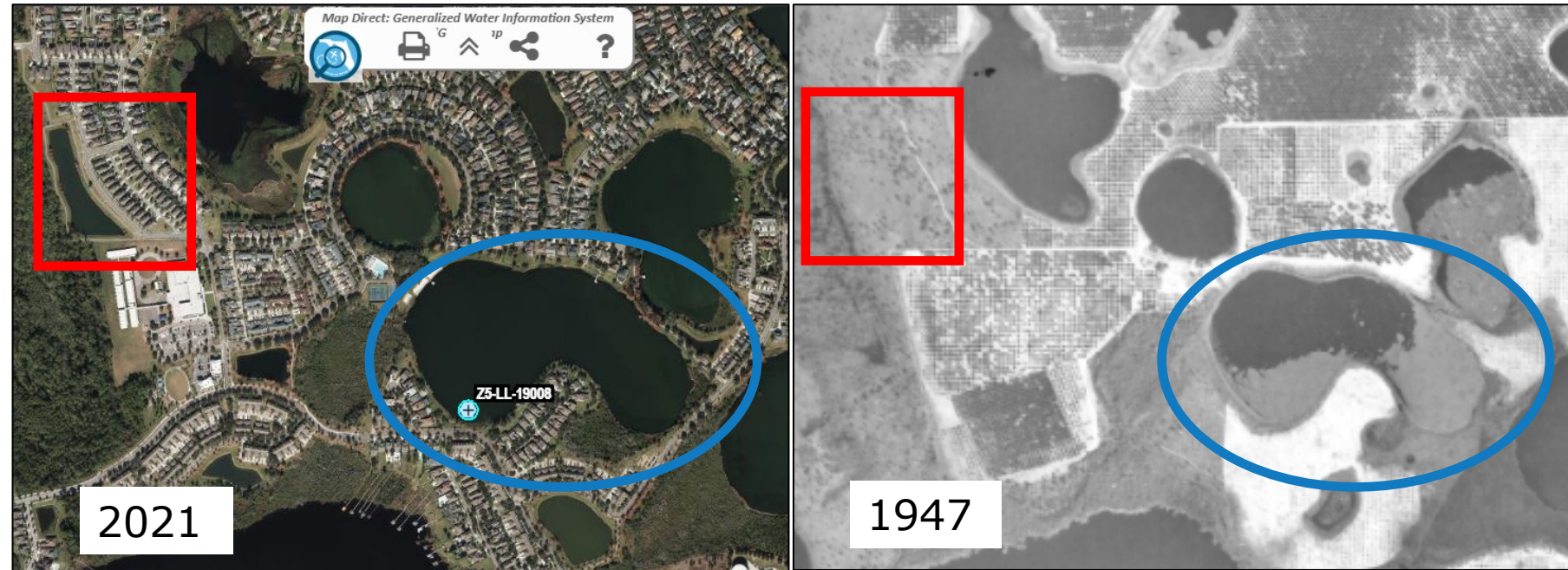


CONFIRM PRESENCE OF WATERBODY IN HISTORIC AERIALS

Imagery Sources

- Map Direct Imagery Slider.
- University of Florida Smathers Library Historic Aerial Photos.

<https://ufdc.ufl.edu/collections/aerials>



Blue circle shows that the Unnamed Lake (Z5-LL-19008) is present in photos from 1947.

Red rectangle shows example of a nearby manmade lake-like feature, which is not present in the photos from 1947.



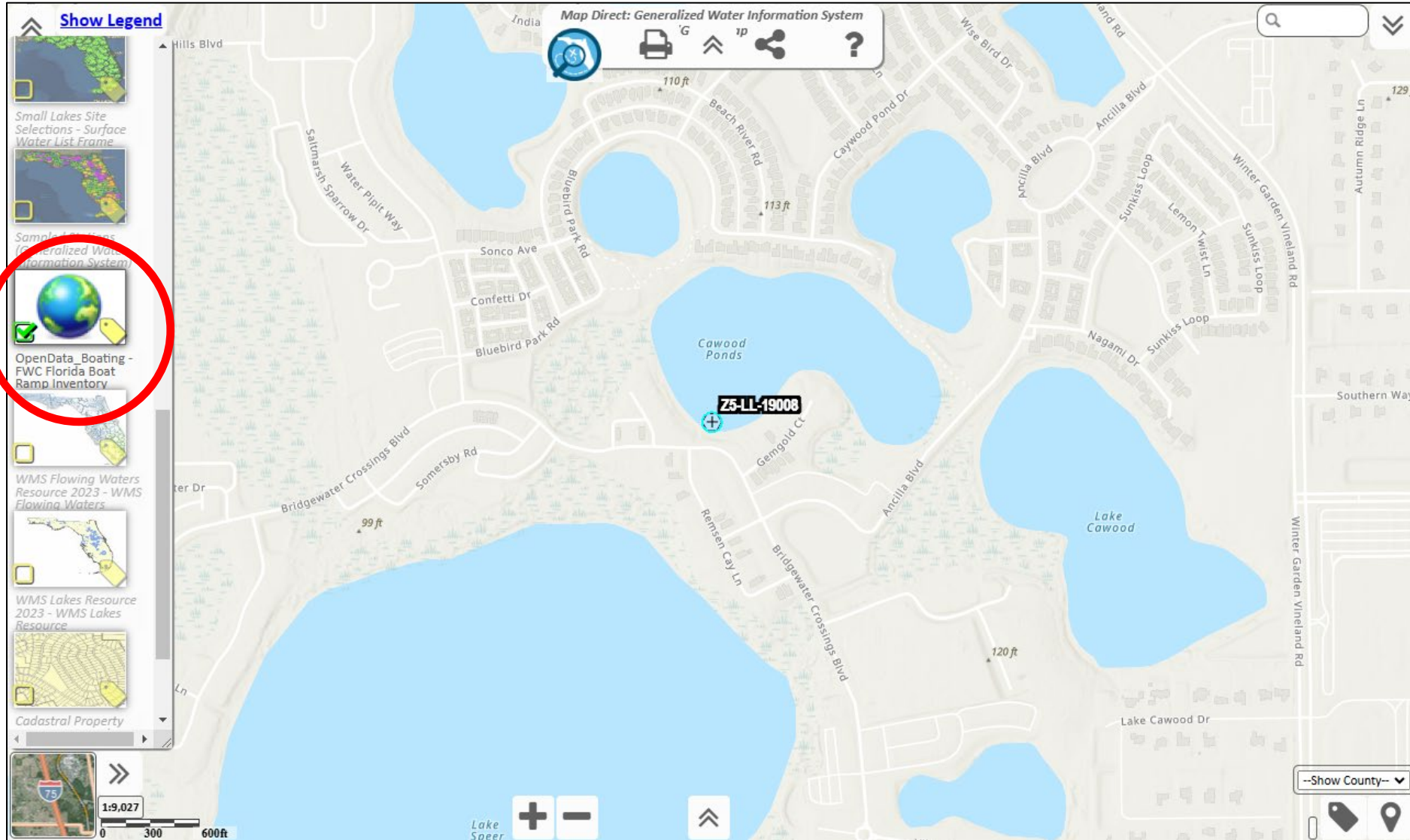
EXPLORE TOOLS FOR SITE ACCESS

- Make Florida Fish and Wildlife Conservation Commission (FWC) Boat Ramps Layer Visible.
- Identify landowners surrounding the lake.



TOOLS FOR SITE ACCESS:

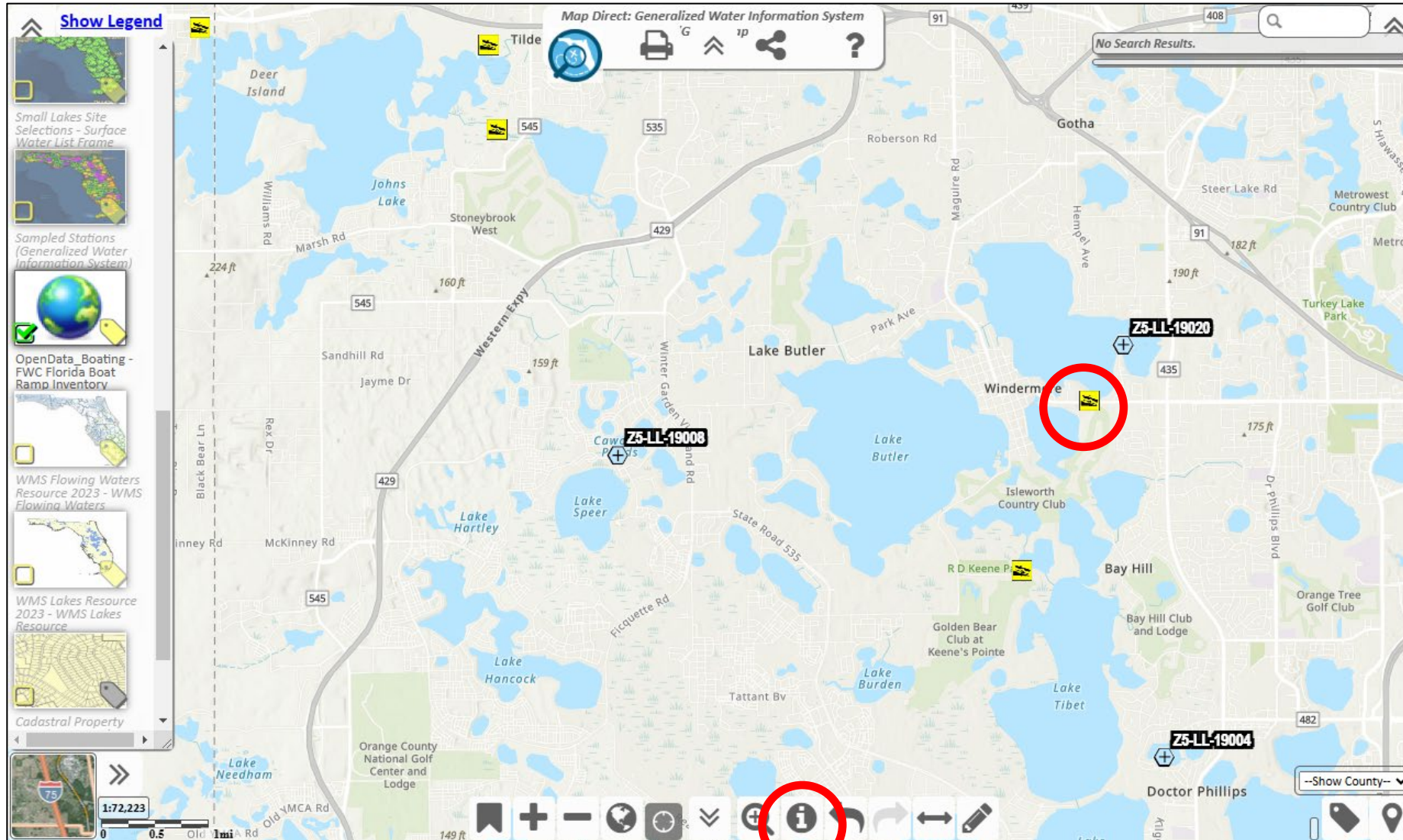
FWC BOAT RAMPS LAYER





TOOLS FOR SITE ACCESS:

FWC BOAT RAMPS LAYER



Use Identify Tool to Display Details.

(No boat ramps on selected unnamed lake. Example shown for other lakes nearby.)



TOOLS FOR SITE ACCESS:

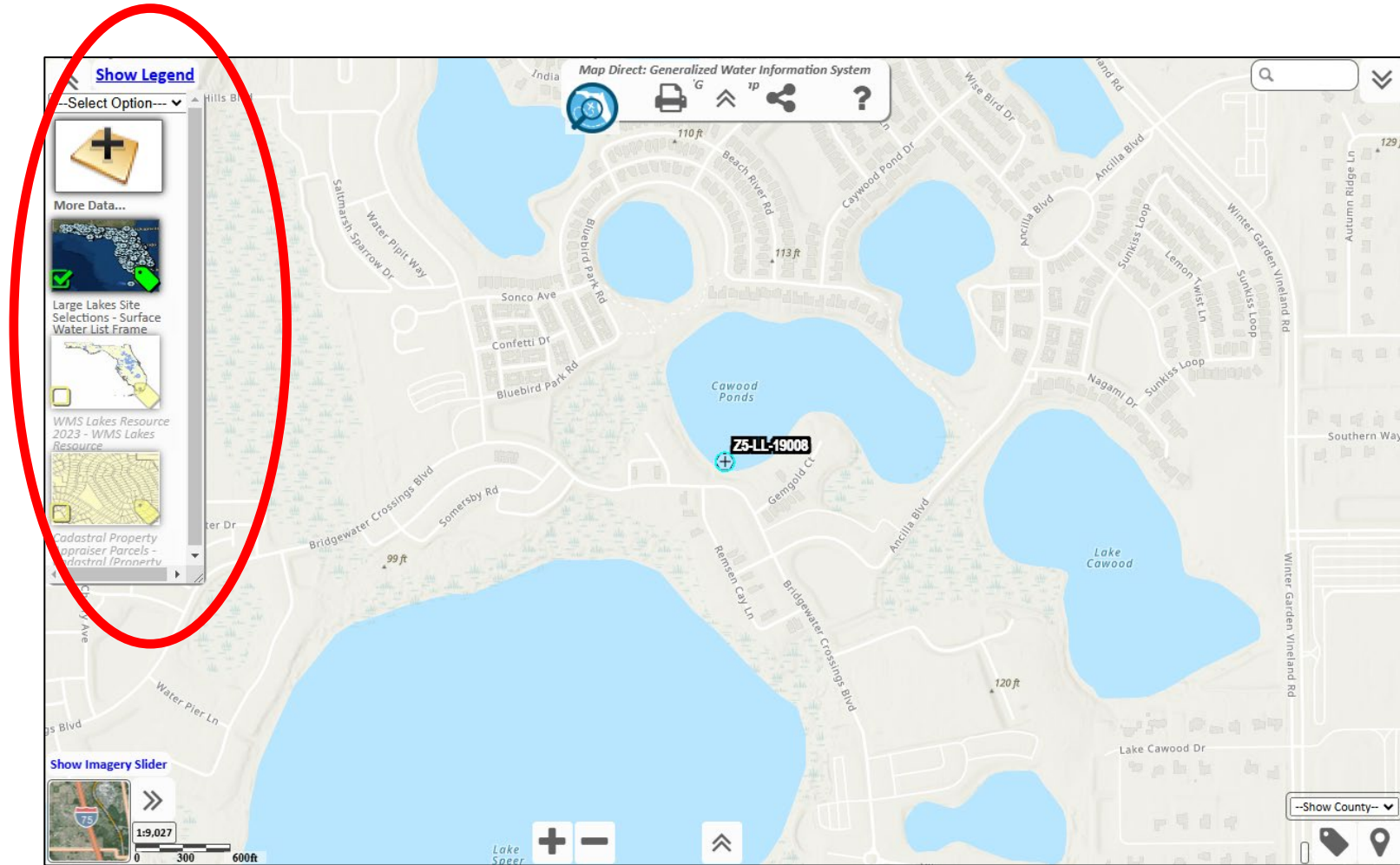
IDENTIFY PROPERTY OWNERS

Preparation:

Remove all layers
(click tile and drag to right)
or turn off visibility
(no green check mark on tile).

Except:

Large Lakes Site Sections,
WMS Lakes Resource, and
Cadastral Property Appraiser
Parcels.





TOOLS FOR SITE ACCESS:

IDENTIFY PROPERTY OWNERS

Make WMS lakes resource (polygon layer) the only visible layer in the map.

Use identify tool to select the Unnamed Lake that contains site Z5-LL-19003.

Step 1 - Turn off visibility for large Lake Sites and Cadastral layers.

Step 2 - Click identify tool icon.

Step 3 - Click lake polygon to select it.

Map Direct: Generalized Water Information System

Search Box 125 feet wide at
28.48684352 x -81.59416667
28°29'12.6367" x -81°35'39.0000"

Drop Marker Add Label What's nearby?

Zoom To this selected feature Clear Print Table Download Format

WMS Lakes Resource 2023 - WMS Lakes Resource

Zone 5 REPORTING UNITS

Large Lake RESOURCE

11.508587 HECTARES

3607-03090101028684 LAKECODE

Nearby Zoom Pan Remove

Layers not Searched:

- Cadastral Property Appraiser Parcels - Cadastral (Property Appraiser Parcels) - Public View
- Large Lakes Site Selections - Surface Water List Frame

Show Imagery Slider

1:9,027

0 300 600ft

Map Direct: Generalized Water Information System



TOOLS FOR SITE ACCESS:

IDENTIFY PROPERTY OWNERS

Click pencil icon to open drawing/graphics tools.

In “actions” menu, select “sketch search results.”

This will draw a temporary copy of the lake polygon.

Step 4 - Click Pencil icon to open drawing/graphics tool window.

Step 5 - Click “Actions” and choose “Sketch Search Results.”

Draw Graphics --Actions--
--Graphics or Sketch Search Results
Choose shape be Clear Graphics
Choose shape be Paste Graphic

Search Box 125 feet wide at
28.48684352 x -81.59416667
28°29'12.6367" x -81°35'39.0000"

Drop Marker Add Label What's nearby?

Zoom To this selected feature Clear Print Table Download Format

WMS Lakes Resource 2023 - WMS Lakes Resource

Zone 5 REPORTING UNITS
Large Lake RESOURCE
11.508587 HECTARES
3607-03090101028684 LAKECODE

Nearby Zoom Pan Remove

Layers not Searched:

- Cadastral Property Appraiser Parcels - Cadastral (Property Appraiser Parcels) - Public View
- Large Lakes Site Selections - Surface Water List Frame

Show Imagery Slider
1:9,027
0 300 600ft

--Show County--



TOOLS FOR SITE ACCESS:

IDENTIFY PROPERTY OWNERS

Use polygon drawing to identify parcels and owners.

Make lake polygons layer not visible.

Make cadastral layer visible.

Step 6 - Click layer tile to make WMS Lakes Resource layer **not visible** on the map.

Step 7 - Click layer tile to make Cadastral layer visible on the map.

Map Direct: Generalized Water Information System

Search Box 125 feet wide at 28.48684352 x -81.59416667 28°29'12.6367" x -81°35'39.0000"

Drop Marker Add Label What's nearby?

Zoom To this selected feature Clear Print Table Download Format

WMS Lakes Resource 2023 - WMS Lakes Resource

Zone 5 REPORTING UNITS

Large Lake RESOURCE

11,508,587 HECTARES

3607-03090101028684 LAKECODE

Nearby Zoom Pan Remove

Layers not Searched:

- Cadastral Property Appraiser Parcels - Cadastral (Property Appraiser Parcels) - Public View
- Large Lakes Site Selections - Surface Water List Frame

Editing Polygon Selection. Click the Map or the Done button to stop editing this shape.

0.4384 acres (0.044435 square miles) (115086.02870903 square meters) 15 feet (0.964044 miles) (1551.4783 meters)

Color... Outline... Remove Done

Show Imagery Slider

1:9,027

0 300 600ft

28.48207191 x -81.60809270 28°28'55.4589" x -81°36'29.1337"

--Show County--



TOOLS FOR SITE ACCESS:

IDENTIFY PROPERTY OWNERS

Click “identify” in search sketch results window to get a list of parcels surrounding the lake.

The screenshot displays the 'Map Direct: Generalized Water Information System' interface. The main map shows a residential area with a lake. A red polygon highlights a specific area on the lake. The 'Identify' button in the bottom toolbar is circled in red. The right sidebar shows a list of 'Cadastral Property Appraiser Parcels' with details for two parcels.

Map Direct: Generalized Water Information System

---Select Option---

More Data...

Large Lakes Site Selections - Surface Water List Frame

WMS Lakes Resource 2023 - WMS Lakes Resource

Cadastral Property Appraiser Parcels - Cadastral (Property Appraiser Parcels) - Public View

272315154000120
PARCEL ID
SARMIENTO OSCAR A.
OWN NAME
SARMIENTO GINA
5437 WALSH POND CT
WINDERMERE, FLORIDA 34786
OWN Address
5437 WALSH POND CT
WINDERMERE, FL 34786
PHY Address

Nearby Zoom Pan Remove

Cadastral Property Appraiser Parcels - Cadastral (Property Appraiser Parcels) - Public View

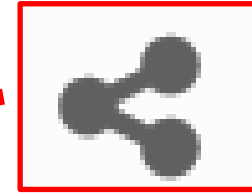
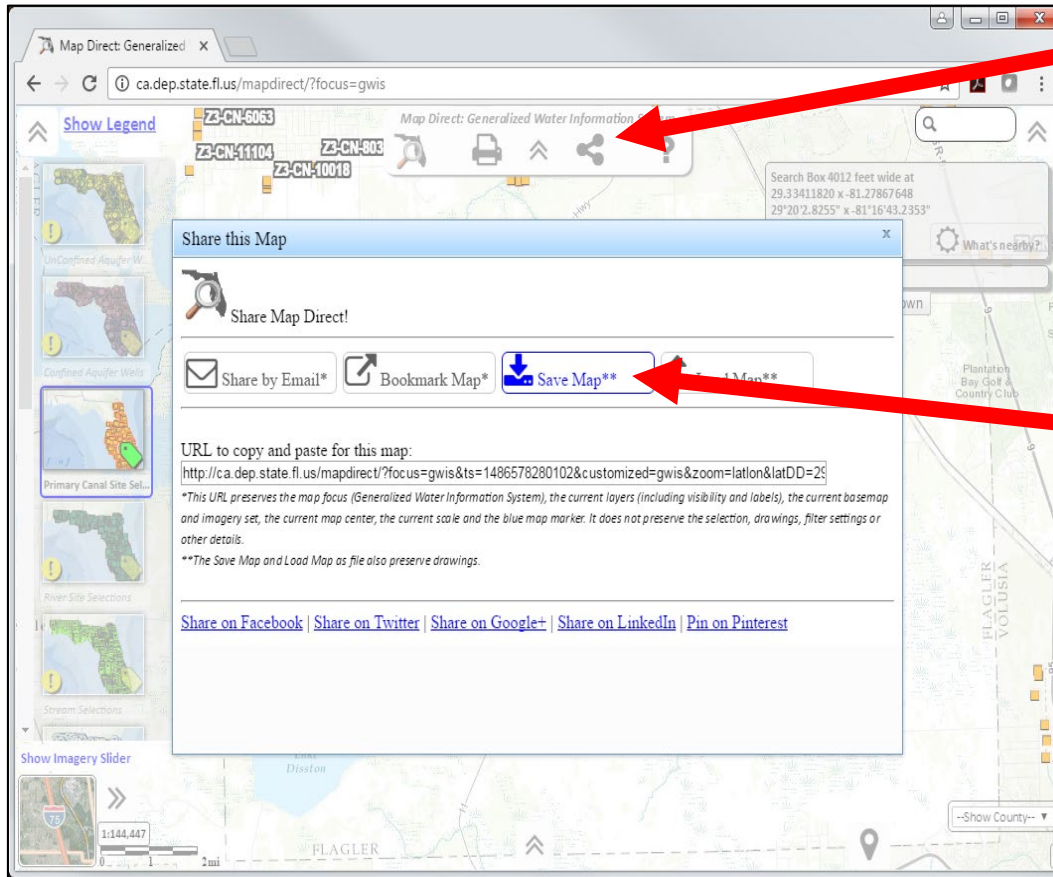
272315154000130
PARCEL ID
LI-CHANG LAI
OWN NAME

--Show County--

Fill Style: [Dropdown]
Color... Outline... Remove Done
Identify Buffer Zoom To Front To Back Cut Copy Paste
Buffer 1 Miles



SAVING AND LOADING MAPS: SAVE MAP TOOL



Click on the Share icon and choose “save map” button.

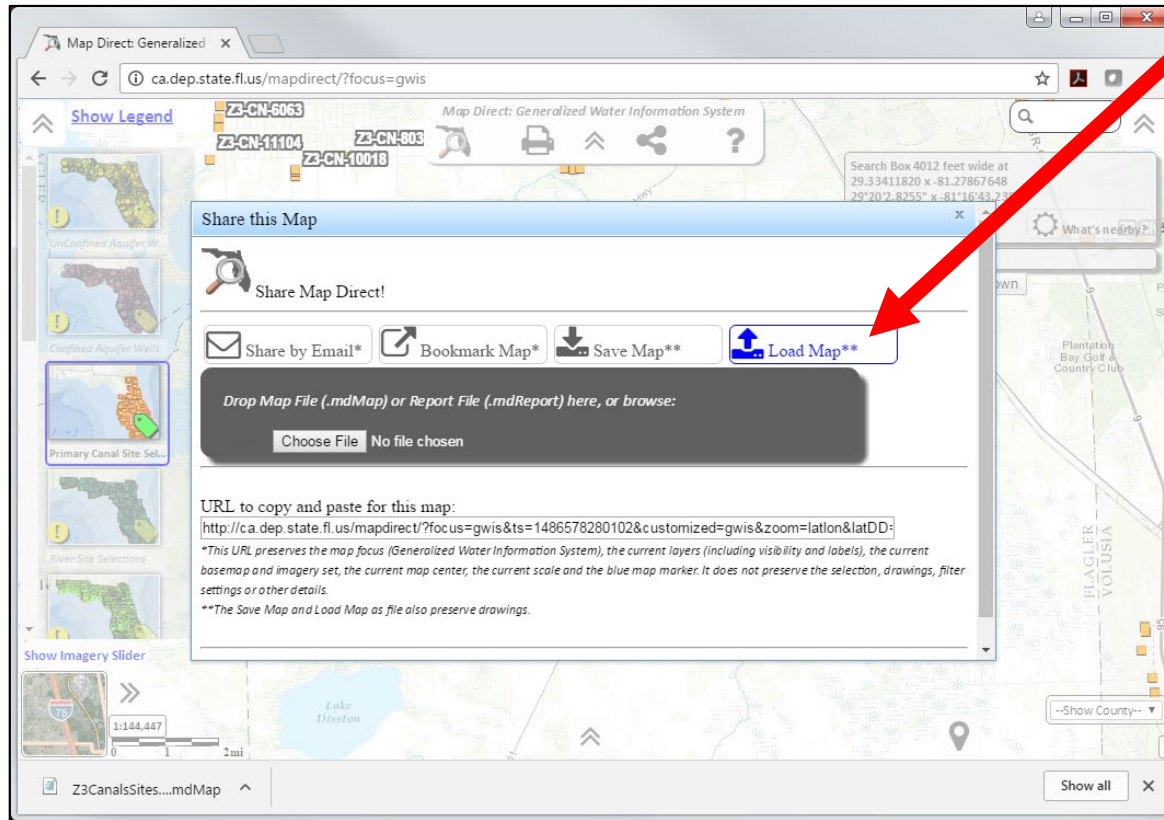


File will be saved with the “.mdMap” extension.

Default file name is unrelated to your search criteria.
Before saving, enter a more meaningful name for the file.
“Z5_LL_Cycle19_Sites1to20.mdMap”.



SAVING AND LOADING MAPS: LOAD MAP TOOL



Click “Load Map.”
Then, drag file to gray
area of button or
browse to file location.
“Choose file” to load
into the “standard”
map.

“Z5_LL_Cycle19_Sites1to20.mdMap”



ADDITIONAL ONLINE RESOURCES

Map Direct Help Guides

<https://ca.dep.state.fl.us/MapDirectDocs/>

Watershed Information Center

Map Direct Resources Section

(<https://floridadep.gov/dear/watershed-monitoring-section/content/watershed-monitoring-information-center>)

[Custom Files for Status Network Recon](#)

Map Direct files with all site selections for each project in current Cycle.



REPORT ISSUES / ASK QUESTIONS

Contact for Map Direct Accessed from GWIS
Database Utilities:

Tommy Adams

DEP WMS Data Coordinator

Thomas.L.Adams@FloridaDEP.gov

850-245-8512



THANK YOU

Stephanie Sunderman-Barnes

Division of Environmental Assessment and Restoration
Florida Department of Environmental Protection

Contact Information:

850-245-8517

Stephanie.SundermanBarnes@FloridaDEP.gov

