

REFERENCE(S)
 1. USGS TOPOGRAPHIC MAP, 7.5 MIN. QUADRANGLE MAP SERIES: MIAMI-DADE QUADRANGLE, MIAMI-DADE COUNTY, FLORIDA.



CLIENT
 FL. DEPARTMENT OF ENVIRONMENTAL PROTECTION

PROJECT
 FDEP MIAMI-DADE COLLEGE FIRE ACADEMY PFAS SOIL AND GROUNDWATER ASSESSMENT

CONSULTANT

YYYY-MM-DD	2021-05-06
DESIGNED	SN
PREPARED	BCL
REVIEWED	SN
APPROVED	RMW

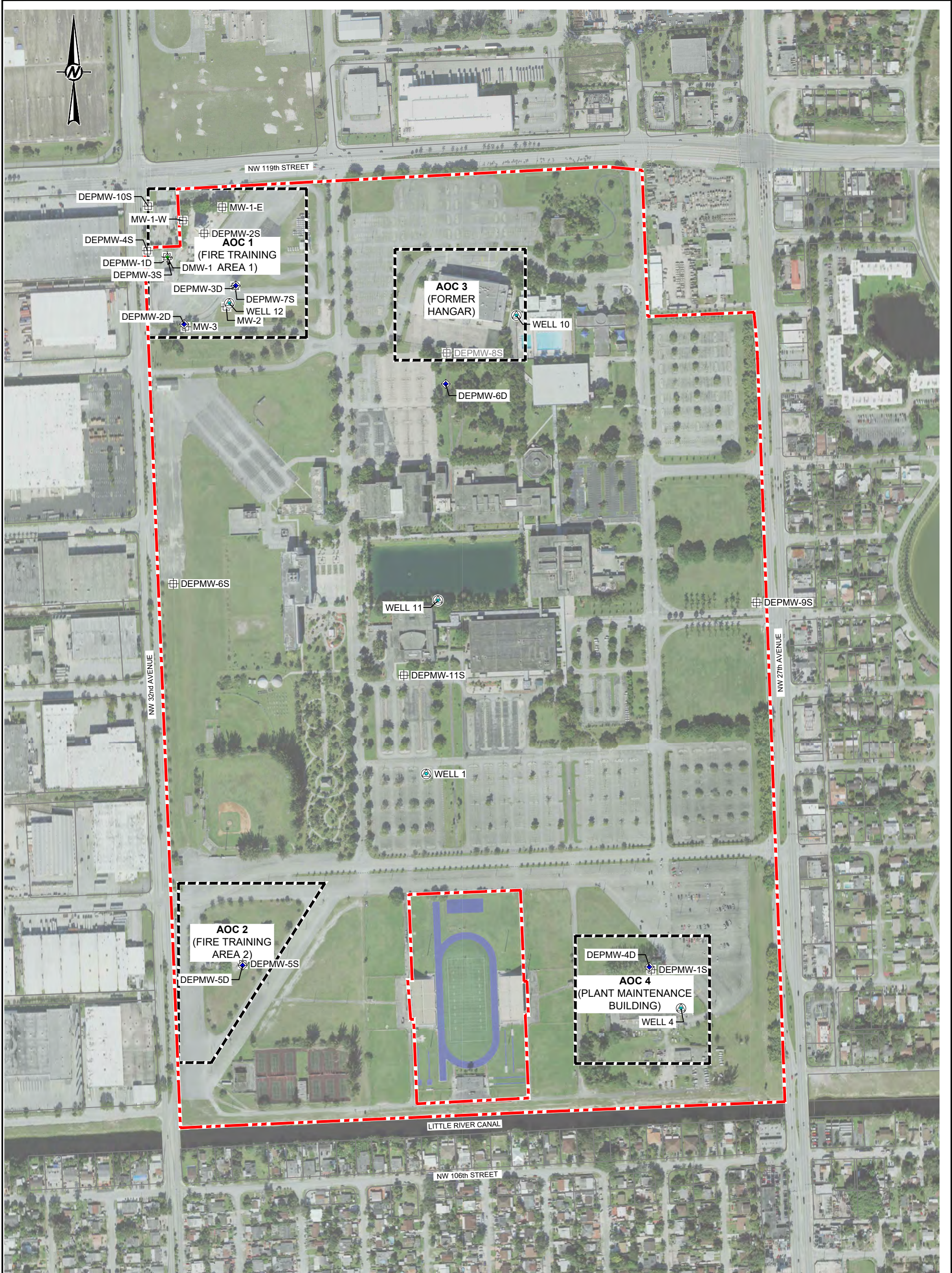
wsp GOLDER

TITLE
 SITE LOCATION MAP

PROJECT NO.	CONTROL	REV.	FIGURE
21-451173	21451173-B001		1

Path: \\golder.complexdata\Office\backsonville\drafting\Files\2021\21-451173 FDEP Miami-Dade\B - PFAS Soil-GW Assessment\Drawings\1 - File Name: 21451173-B001.dwg

IF THIS MEASUREMENT DOES NOT MATCH WHAT IS SHOWN, THE SHEET SIZE HAS BEEN MODIFIED FROM ANSIA



LEGEND

	APPROXIMATE PROPERTY BOUNDARY
	SHALLOW MONITORING WELL LOCATIONS
	INTERMEDIATE MONITORING WELL LOCATIONS
	DEEP MONITORING WELL LOCATIONS
	IRRIGATION WELL LOCATIONS

REFERENCE(S)

- AERIAL IMAGE TAKEN FROM FDEP BUREAU OF SURVEY AND MAPPING (LAND BOUNDARY INFORMATION SYSTEM), DATED JANUARY 2020.

NOTE(S)

- ELEVATIONS ARE IN FEET AND RELATIVE TO NAVD88/NGVD29.
- HORIZONTAL DATUM RELATIVE TO NAD83 FLORIDA STATE PLANES, EAST ZONE, US FOOT/NAD27 FLORIDA STATE PLANES, EAST ZONE(901), US FOOT

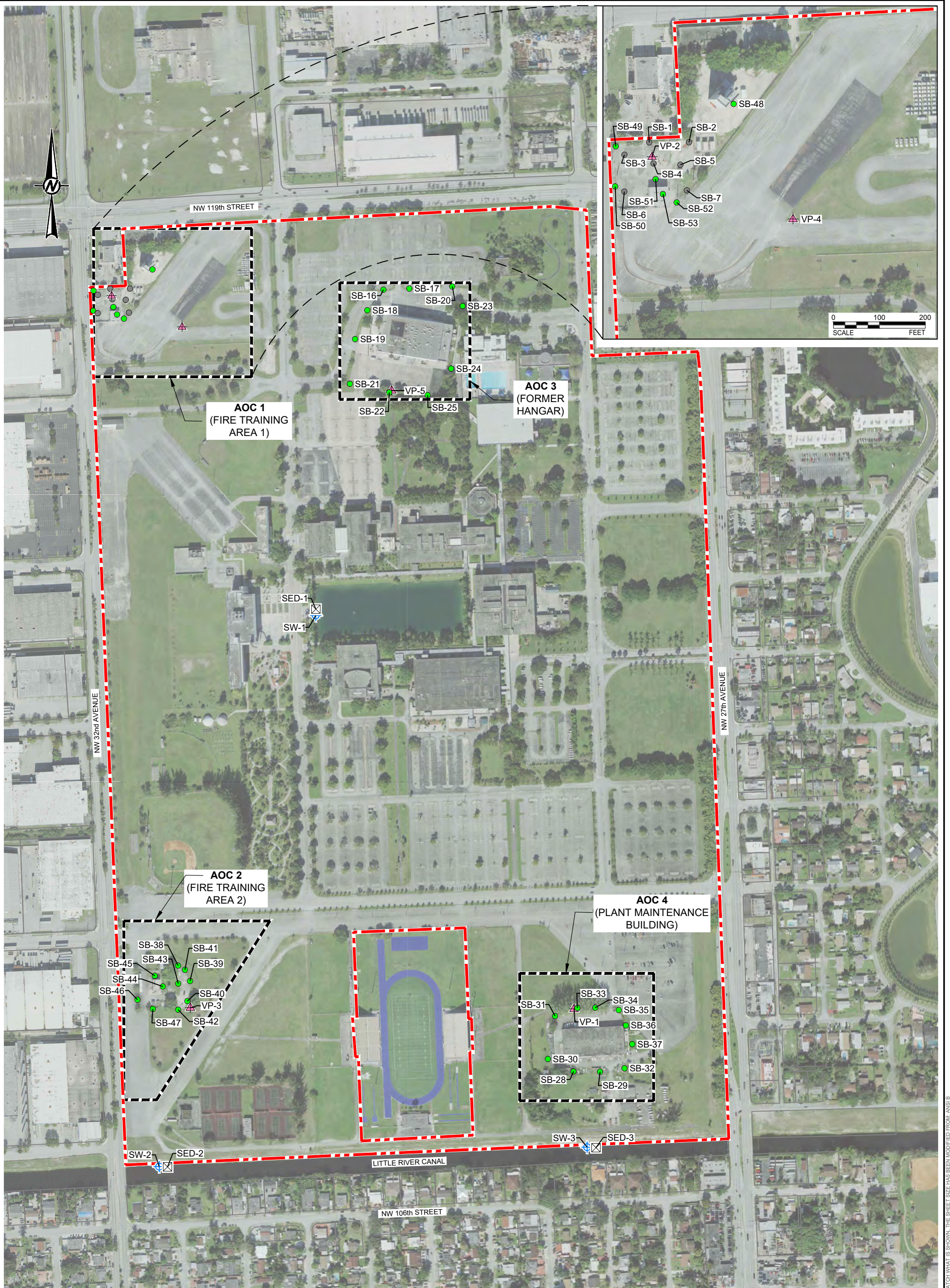
CLIENT	FL. DEPARTMENT OF ENVIRONMENTAL PROTECTION	
CONSULTANT	YYYY-MM-DD	2021-05-06
	DESIGNED	SN
	PREPARED	BCL
	REVIEWED	SN
	APPROVED	RMW

PROJECT
FDEP MIAMI-DADE COLLEGE FIRE ACADEMY PFAS SOIL AND GROUNDWATER ASSESSMENT



TITLE	SITE PLAN		
PROJECT NO.	CONTROL	REV.	FIGURE
21-451173	21451173-B002	----	2

IF THIS MEASUREMENT DOES NOT MATCH WHAT IS SHOWN, THE SHEET SIZE HAS BEEN MODIFIED FROM: ANSI B



LEGEND

	APPROXIMATE PROPERTY BOUNDARY
	SOIL SAMPLE LOCATIONS
	SEDIMENT SAMPLE LOCATIONS
	SURFACE WATER SAMPLE LOCATIONS
	VERTICAL GROUNDWATER PROFILING LOCATIONS
	EXISTING SOIL SAMPLE LOCATIONS

REFERENCE(S)

- AERIAL IMAGE TAKEN FROM FDEP BUREAU OF SURVEY AND MAPPING (LAND BOUNDARY INFORMATION SYSTEM), DATED JANUARY 2020.

CLIENT
FL. DEPARTMENT OF ENVIRONMENTAL PROTECTION

CONSULTANT	YYYY-MM-DD	2021-05-06
	DESIGNED	SN
	PREPARED	BCL
	REVIEWED	SN
	APPROVED	RMW

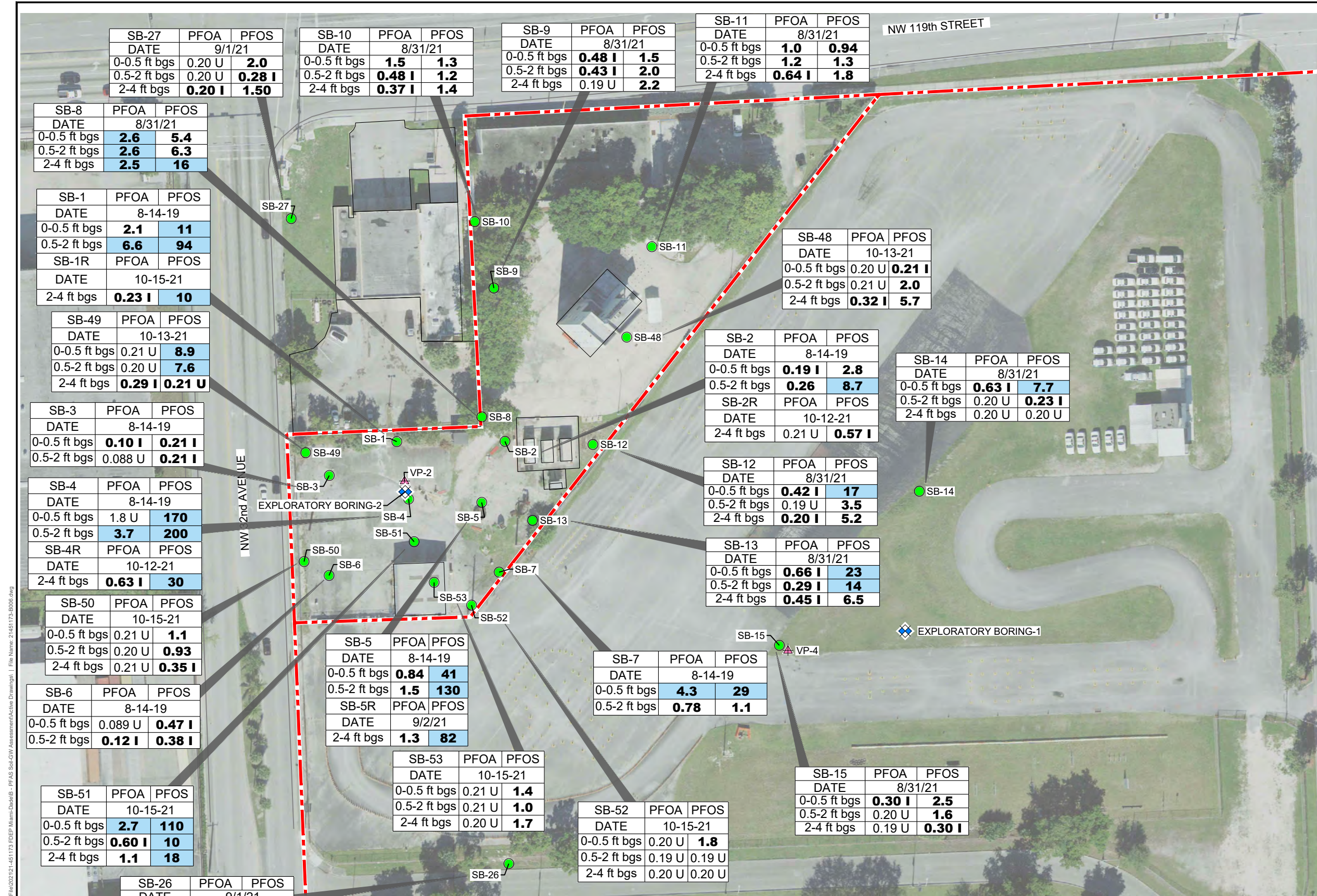
PROJECT
FDEP MIAMI-DADE COLLEGE FIRE ACADEMY PFAS SOIL AND GROUNDWATER ASSESSMENT

TITLE
SOIL, SEDIMENT, SURFACE WATER, AND VERTICAL PROFILE LOCATIONS

PROJECT NO.	CONTROL	REV.	FIGURE
21-451173	21451173-B003B	----	3



IF THIS MEASUREMENT DOES NOT MATCH WHAT IS SHOWN, THE SHEET SIZE HAS BEEN MODIFIED FROM: ANSI B



LEGEND

- APPROXIMATE PROPERTY BOUNDARY
- SOIL SAMPLE LOCATIONS
- ▲ VERTICAL GROUNDWATER PROFILING LOCATION
- ◆ EXPLORATORY SOIL BORING LOCATION

- NOTE(S)**
1. PROVISIONAL SCTL - FDEP PROVISIONAL SOIL CLEANUP TARGET LEVEL.
 2. ALL RESULTS ARE REPORTED IN MICROGRAMS PER KILOGRAM (µg/kg).
 3. BOLD FONTS INDICATES CONSTITUENT CONCENTRATION WAS REPORTED ABOVE THE LABORATORY METHOD DETECTION LIMIT.
 4. HIGHLIGHTED FONT INDICATES CONSTITUENT CONCENTRATION WAS REPORTED ABOVE THE FDEP PROVISIONAL SOIL CLEANUP TARGET LEVEL.
 5. I- REPORTED VALUE IS BETWEEN THE LABORATORY METHOD DETECTION LIMIT AND LABORATORY PRACTICAL QUANTITATION LIMIT.
 6. U - THE COMPOUND WAS ANALYZED FOR, BUT NOT DETECTED. THE REPORTED VALUE IS THE METHOD DETECTION LIMIT FOR THE SAMPLE ANALYZED.
 7. ft bgs - FEET BELOW GROUND SURFACE.
 8. PFOA - PERFLUORO-N-OCTANOIC ACID.
 9. PFOS - PERFLUOROOCETANESULFONIC ACID.

Path: \\golder-gfiscm\projects\client\assessments\fireacademy\20211103_451173_FDEP_Miami-Dade_College_PFA_Soil_GW_Assessment\Drawings - PFA_Soil_GW_Assessment\Drawings - PFA_Soil_GW_Assessment.dwg File Name: 21451173-B006.dwg

IF THIS MEASUREMENT DOES NOT MATCH WHAT IS SHOWN, THE SHEET SIZE HAS BEEN MODIFIED FROM ANSIB

SB-27	PFOA	PFOS
DATE	9/1/21	
0-0.5 ft bgs	0.20 U	2.0
0.5-2 ft bgs	0.20 U	0.28 I
2-4 ft bgs	0.20 I	1.50

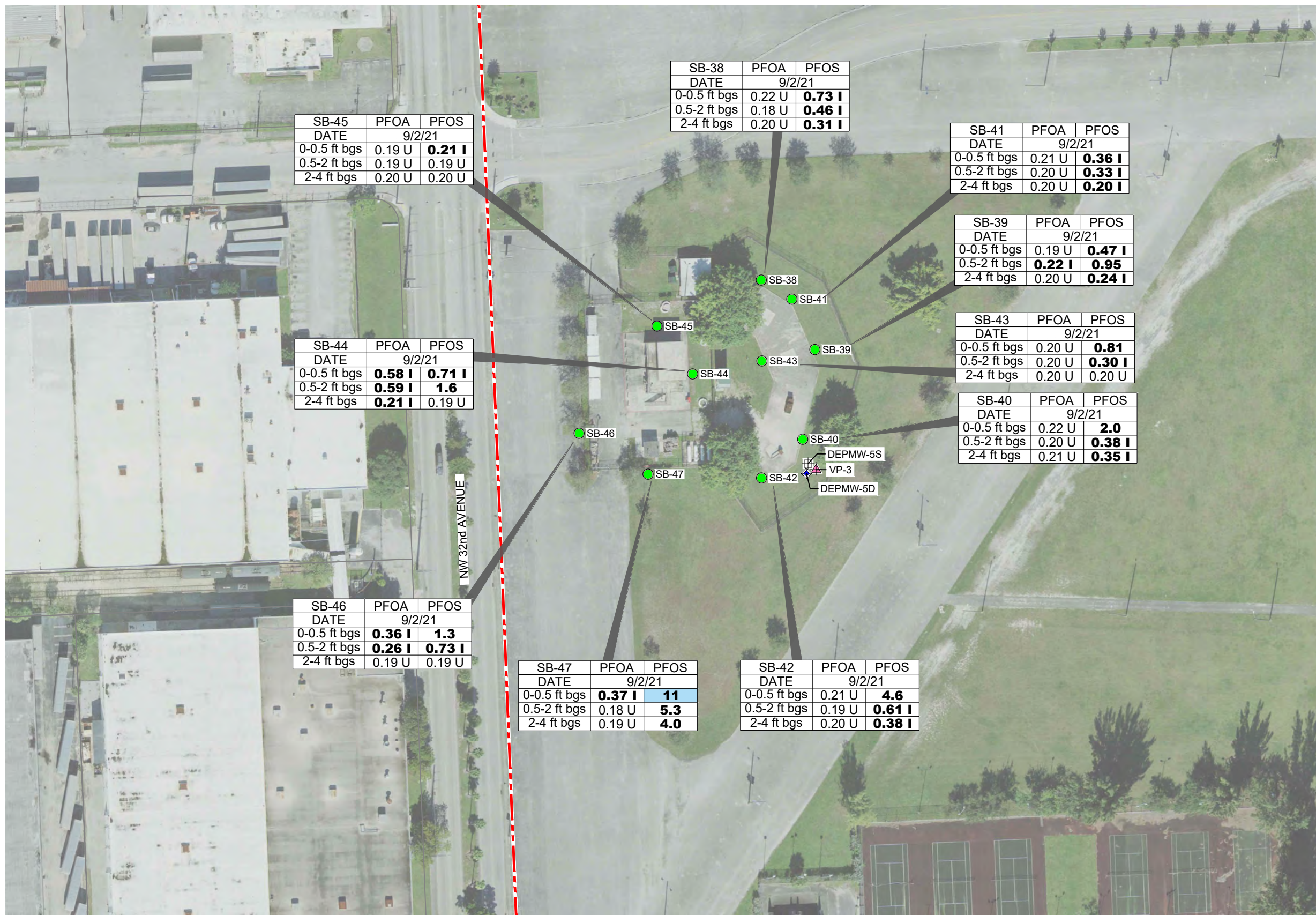
SB-26	PFOA	PFOS
DATE	9/1/21	
0-0.5 ft bgs	0.37 I	2.1
0.5-2 ft bgs	0.20 U	0.65 I
2-4 ft bgs	0.21 U	0.21 U

PROVISIONAL SOIL CLEANUP TARGET LEVELS (SCTL)	PFOA IN µg/Kg	PFOS IN µg/Kg
SCTL-LEACHABILITY	2	7
SCTL-RESIDENTIAL	1,300	1,300
SCTL-INDUSTRIAL	25,000	25,000

CLIENT	FL. DEPARTMENT OF ENVIRONMENTAL PROTECTION
CONSULTANT	WSP GOLDER
DESIGNED	JWS
PREPARED	BCL
REVIEWED	SN
APPROVED	RMW

PROJECT	FDEP MIAMI-DADE COLLEGE FIRE ACADEMY PFAS SOIL AND GROUNDWATER ASSESSMENT
TITLE	AOC 1 - SOIL SAMPLE ANALYTICAL RESULTS (FIRE TRAINING AREA)
PROJECT NO.	21-451173
CONTROL	21451173-B006
REV.	
FIGURE	4

- REFERENCE(S)**
1. AERIAL IMAGE TAKEN FROM FDEP BUREAU OF SURVEY AND MAPPING (LAND BOUNDARY INFORMATION SYSTEM), DATED JANUARY 2020.



SB-45	PFOA	PFOS
DATE	9/2/21	
0-0.5 ft bgs	0.19 U	0.21 I
0.5-2 ft bgs	0.19 U	0.19 U
2-4 ft bgs	0.20 U	0.20 U

SB-38	PFOA	PFOS
DATE	9/2/21	
0-0.5 ft bgs	0.22 U	0.73 I
0.5-2 ft bgs	0.18 U	0.46 I
2-4 ft bgs	0.20 U	0.31 I

SB-41	PFOA	PFOS
DATE	9/2/21	
0-0.5 ft bgs	0.21 U	0.36 I
0.5-2 ft bgs	0.20 U	0.33 I
2-4 ft bgs	0.20 U	0.20 I

SB-39	PFOA	PFOS
DATE	9/2/21	
0-0.5 ft bgs	0.19 U	0.47 I
0.5-2 ft bgs	0.22 I	0.95
2-4 ft bgs	0.20 U	0.24 I

SB-43	PFOA	PFOS
DATE	9/2/21	
0-0.5 ft bgs	0.20 U	0.81
0.5-2 ft bgs	0.20 U	0.30 I
2-4 ft bgs	0.20 U	0.20 U

SB-40	PFOA	PFOS
DATE	9/2/21	
0-0.5 ft bgs	0.22 U	2.0
0.5-2 ft bgs	0.20 U	0.38 I
2-4 ft bgs	0.21 U	0.35 I

SB-44	PFOA	PFOS
DATE	9/2/21	
0-0.5 ft bgs	0.58 I	0.71 I
0.5-2 ft bgs	0.59 I	1.6
2-4 ft bgs	0.21 I	0.19 U

SB-46	PFOA	PFOS
DATE	9/2/21	
0-0.5 ft bgs	0.36 I	1.3
0.5-2 ft bgs	0.26 I	0.73 I
2-4 ft bgs	0.19 U	0.19 U

SB-47	PFOA	PFOS
DATE	9/2/21	
0-0.5 ft bgs	0.37 I	11
0.5-2 ft bgs	0.18 U	5.3
2-4 ft bgs	0.19 U	4.0

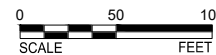
SB-42	PFOA	PFOS
DATE	9/2/21	
0-0.5 ft bgs	0.21 U	4.6
0.5-2 ft bgs	0.19 U	0.61 I
2-4 ft bgs	0.20 U	0.38 I

LEGEND

- APPROXIMATE PROPERTY BOUNDARY
- DEEP MONITORING WELL LOCATIONS
- SHALLOW MONITORING WELL LOCATIONS
- SOIL SAMPLE LOCATIONS
- VERTICAL GROUNDWATER PROFILING LOCATIONS

- NOTE(S)**
- PROVISIONAL SCTL - FDEP PROVISIONAL SOIL CLEANUP TARGET LEVEL.
 - ALL RESULTS ARE REPORTED IN MICROGRAMS PER KILOGRAM (µg/kg).
 - BOLD FONTS** INDICATES CONSTITUENT CONCENTRATION WAS REPORTED ABOVE THE LABORATORY METHOD DETECTION LIMIT.
 - HIGHLIGHTED FONT** INDICATES CONSTITUENT CONCENTRATION WAS REPORTED ABOVE THE FDEP PROVISIONAL SOIL CLEANUP TARGET LEVEL.
 - I** - REPORTED VALUE IS BETWEEN THE LABORATORY METHOD DETECTION LIMIT AND LABORATORY PRACTICAL QUANTITATION LIMIT.
 - U** - THE COMPOUND WAS ANALYZED FOR, BUT NOT DETECTED. THE REPORTED VALUE IS THE METHOD DETECTION LIMIT FOR THE SAMPLE ANALYZED.
 - ft bgs - FEET BELOW GROUND SURFACE.
 - PFOA - PERFLUORO-N-OCTANOIC ACID.
 - PFOS - PERFLUOROOCETANESULFONIC ACID.

PROVISIONAL SOIL CLEANUP TARGET LEVELS (SCTL)	PFOA IN µg/Kg	PFOS IN µg/Kg
SCTL-LEACHABILITY	2	7
SCTL-RESIDENTIAL	1,300	1,300
SCTL-INDUSTRIAL	25,000	25,000



- REFERENCE(S)**
- AERIAL IMAGE TAKEN FROM FDEP BUREAU OF SURVEY AND MAPPING (LAND BOUNDARY INFORMATION SYSTEM), DATED JANUARY 2020.

CLIENT
FL. DEPARTMENT OF ENVIRONMENTAL PROTECTION

CONSULTANT



YYYY-MM-DD 2021-11-04

DESIGNED JWS

PREPARED BCL

REVIEWED SN

APPROVED RMW

PROJECT
FDEP MIAMI-DADE COLLEGE FIRE ACADEMY PFAS SOIL AND GROUNDWATER ASSESSMENT

TITLE
AOC 2 - SOIL SAMPLE ANALYTICAL RESULTS (FIRE TRAINING AREA 2)

PROJECT NO. 21-451173 CONTROL 21451173-B008

REV.

FIGURE

5

SB-16	PFOA	PFOS
DATE	8/31/21	
0-0.5 ft bgs	0.24 I	1.5
0.5-2 ft bgs	0.23 I	1.8
2-4 ft bgs	0.23 I	1.1

SB-17	PFOA	PFOS
DATE	8/31/21	
0-0.5 ft bgs	0.21 I	1.6
0.5-2 ft bgs	0.20 U	0.86
2-4 ft bgs	0.20 U	0.46 I

SB-20	PFOA	PFOS
DATE	8/31/21	
0-0.5 ft bgs	0.19 U	0.69 I
0.5-2 ft bgs	0.23 I	0.62 I
2-4 ft bgs	0.19 U	0.53 I

SB-23	PFOA	PFOS
DATE	9/1/21	
0-0.5 ft bgs	1.6	8.0
0.5-2 ft bgs	0.28 I	1.8
2-4 ft bgs	0.19 U	0.39 I

SB-18	PFOA	PFOS
DATE	8/31/21	
0-0.5 ft bgs	0.20 U	0.41 I
0.5-2 ft bgs	0.20 U	0.31 I
2-4 ft bgs	0.19 U	0.19 U

SB-19	PFOA	PFOS
DATE	8/31/21	
0-0.5 ft bgs	0.30 I	0.80 I
0.5-2 ft bgs	0.19 U	0.47 I
2-4 ft bgs	0.20 U	0.20 U

SB-21	PFOA	PFOS
DATE	9/1/21	
0-0.5 ft bgs	0.22 U	1.0
0.5-2 ft bgs	0.20 U	0.51 I
2-4 ft bgs	0.22 I	0.99

SB-24	PFOA	PFOS
DATE	9/1/21	
0-0.5 ft bgs	0.51 I	2.9
0.5-2 ft bgs	0.23 I	3.2
2-4 ft bgs	0.20 U	0.61 I

SB-22	PFOA	PFOS
DATE	9/1/21	
0-0.5 ft bgs	1.5	8.0
0.5-2 ft bgs	1.0	3.7
2-4 ft bgs	0.19 U	0.28 I

SB-25	PFOA	PFOS
DATE	9/1/21	
0-0.5 ft bgs	0.55 I	3.1
0.5-2 ft bgs	0.46 I	1.4
2-4 ft bgs	0.21 U	0.21 U

PROVISIONAL SOIL CLEANUP TARGET LEVELS (SCTL)	PFOA IN µg/Kg	PFOS IN µg/Kg
SCTL-LEACHABILITY	2	7
SCTL-RESIDENTIAL	1,300	1,300
SCTL-INDUSTRIAL	25,000	25,000

REFERENCE(S)
 1. AERIAL IMAGE TAKEN FROM FDEP BUREAU OF SURVEY AND MAPPING (LAND BOUNDARY INFORMATION SYSTEM), DATED JANUARY 2020.

LEGEND

- APPROXIMATE PROPERTY BOUNDARY
- PROPOSED DEEP MONITORING WELL LOCATIONS
- SHALLOW MONITORING WELL LOCATIONS
- SOIL SAMPLE LOCATIONS
- VERTICAL GROUNDWATER PROFILING LOCATIONS

- NOTE(S)**
- PROVISIONAL SCTL - FDEP PROVISIONAL SOIL CLEANUP TARGET LEVEL.
 - ALL RESULTS ARE REPORTED IN MICROGRAMS PER KILOGRAM (µg/kg).
 - BOLD FONTS INDICATES CONSTITUENT CONCENTRATION WAS REPORTED ABOVE THE LABORATORY METHOD DETECTION LIMIT.
 - HIGHLIGHTED FONT INDICATES CONSTITUENT CONCENTRATION WAS REPORTED ABOVE THE FDEP PROVISIONAL SOIL CLEANUP TARGET LEVEL.
 - I - REPORTED VALUE IS BETWEEN THE LABORATORY METHOD DETECTION LIMIT AND LABORATORY PRACTICAL QUANTITATION LIMIT.
 - U - THE COMPOUND WAS ANALYZED FOR, BUT NOT DETECTED. THE REPORTED VALUE IS THE METHOD DETECTION LIMIT FOR THE SAMPLE ANALYZED.
 - ft bgs - FEET BELOW GROUND SURFACE.
 - PFOA - PERFLUORO-N-OCTANOIC ACID.
 - PFOS - PERFLUOROOCTANESULFONIC ACID.

CLIENT
 FL. DEPARTMENT OF ENVIRONMENTAL PROTECTION

CONSULTANT	YYYY-MM-DD	2021-10-08
	DESIGNED	SN
	PREPARED	BCL
	REVIEWED	SN
	APPROVED	RMW

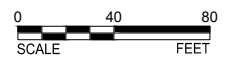
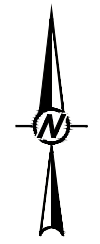
PROJECT
 FDEP MIAMI-DADE COLLEGE FIRE ACADEMY PFAS SOIL AND GROUNDWATER ASSESSMENT

TITLE
AOC 3 - SOIL SAMPLE ANALYTICAL RESULTS (FORMER HANGAR)

Path: \\golder-gfiscm\projects\client\assessments\hangar\PFAS\Soil\GV\Assessment\Soil\Drawings\1 - File Name: 21451173-B008.dwg

1 in IF THIS MEASUREMENT DOES NOT MATCH WHAT IS SHOWN, THE SHEET SIZE HAS BEEN MODIFIED FROM ANSIB

Path: \\golder-gis\completa\clients\assessments\2021\21-451173\FDEP Miami-Dade\AOC4 - PFAS Soil & GW Assessment\AOC4 - Drawing\1 - File Name: 21451173-B008.dwg



LEGEND

- APPROXIMATE PROPERTY BOUNDARY
- ◆ DEEP MONITORING WELL LOCATIONS
- ⊕ SHALLOW MONITORING WELL LOCATIONS
- SOIL SAMPLE LOCATIONS
- ▲ VERTICAL GROUNDWATER PROFILING LOCATIONS
- ⊗ SEDIMENT SAMPLE LOCATIONS
- ⊕ SURFACE WATER SAMPLE LOCATIONS

- NOTE(S)**
1. PROVISIONAL SCTL - FDEP PROVISIONAL SOIL CLEANUP TARGET LEVEL.
 2. ALL RESULTS ARE REPORTED IN MICROGRAMS PER KILOGRAM (µg/kg).
 3. BOLD FONTS INDICATES CONSTITUENT CONCENTRATION WAS REPORTED ABOVE THE LABORATORY METHOD DETECTION LIMIT.
 4. HIGHLIGHTED FONT INDICATES CONSTITUENT CONCENTRATION WAS REPORTED ABOVE THE FDEP PROVISIONAL SOIL CLEANUP TARGET LEVEL.
 5. I - REPORTED VALUE IS BETWEEN THE LABORATORY METHOD DETECTION LIMIT AND LABORATORY PRACTICAL QUANTITATION LIMIT.
 6. U - THE COMPOUND WAS ANALYZED FOR, BUT NOT DETECTED. THE REPORTED VALUE IS THE METHOD DETECTION LIMIT FOR THE SAMPLE ANALYZED.
 7. ft bgs - FEET BELOW GROUND SURFACE.
 8. PFOA - PERFLUORO-N-OCTANOIC ACID.
 9. PFOS - PERFLUOROOCTANESULFONIC ACID.

CLIENT
FL. DEPARTMENT OF ENVIRONMENTAL PROTECTION

CONSULTANT	YYYY-MM-DD	2021-10-08
wsp GOLDER	DESIGNED	SN
	PREPARED	BCL
	REVIEWED	SN
	APPROVED	RMW

PROJECT
FDEP MIAMI-DADE COLLEGE FIRE ACADEMY PFAS SOIL AND GROUNDWATER ASSESSMENT

TITLE
AOC 4 - SOIL SAMPLE ANALYTICAL RESULTS
(PLANT MAINTENANCE BUILDING)

PROJECT NO.	CONTROL	REV.	FIGURE
21-451173	21451173-B008		7

SB-30	PFOA	PFOS
DATE	9/1/21	
0-0.5 ft bgs	0.20 U	1.8
0.5-2 ft bgs	0.18 U	1.0
2-4 ft bgs	0.20 U	0.27 I

SB-31	PFOA	PFOS
DATE	9/1/21	
0-0.5 ft bgs	0.20 U	0.32 I
0.5-2 ft bgs	0.18 U	0.18 U
2-4 ft bgs	0.19 U	0.19 U

SB-28	PFOA	PFOS
DATE	9/1/21	
0-0.5 ft bgs	0.21 U	0.73 I
0.5-2 ft bgs	0.20 U	0.20 U
2-4 ft bgs	0.20 U	0.20 U

SB-29	PFOA	PFOS
DATE	9/1/21	
0-0.5 ft bgs	0.21 U	0.21 U
0.5-2 ft bgs	0.18 U	0.18 U
2-4 ft bgs	0.21 U	0.21 U

SB-33	PFOA	PFOS
DATE	9/2/21	
0-0.5 ft bgs	0.21 U	3.1
0.5-2 ft bgs	0.19 U	0.40 I
2-4 ft bgs	0.19 U	0.69 I

SB-34	PFOA	PFOS
DATE	9/2/21	
0-0.5 ft bgs	0.29 I	0.97
0.5-2 ft bgs	0.20 U	0.24 I
2-4 ft bgs	0.19 U	0.19 U

SB-35	PFOA	PFOS
DATE	9/2/21	
0-0.5 ft bgs	0.37 I	1.9
0.5-2 ft bgs	0.38 I	3.0
2-4 ft bgs	0.19 U	0.68 I

SB-36	PFOA	PFOS
DATE	9/2/21	
0-0.5 ft bgs	1.80	14
0.5-2 ft bgs	0.45 I	4.30

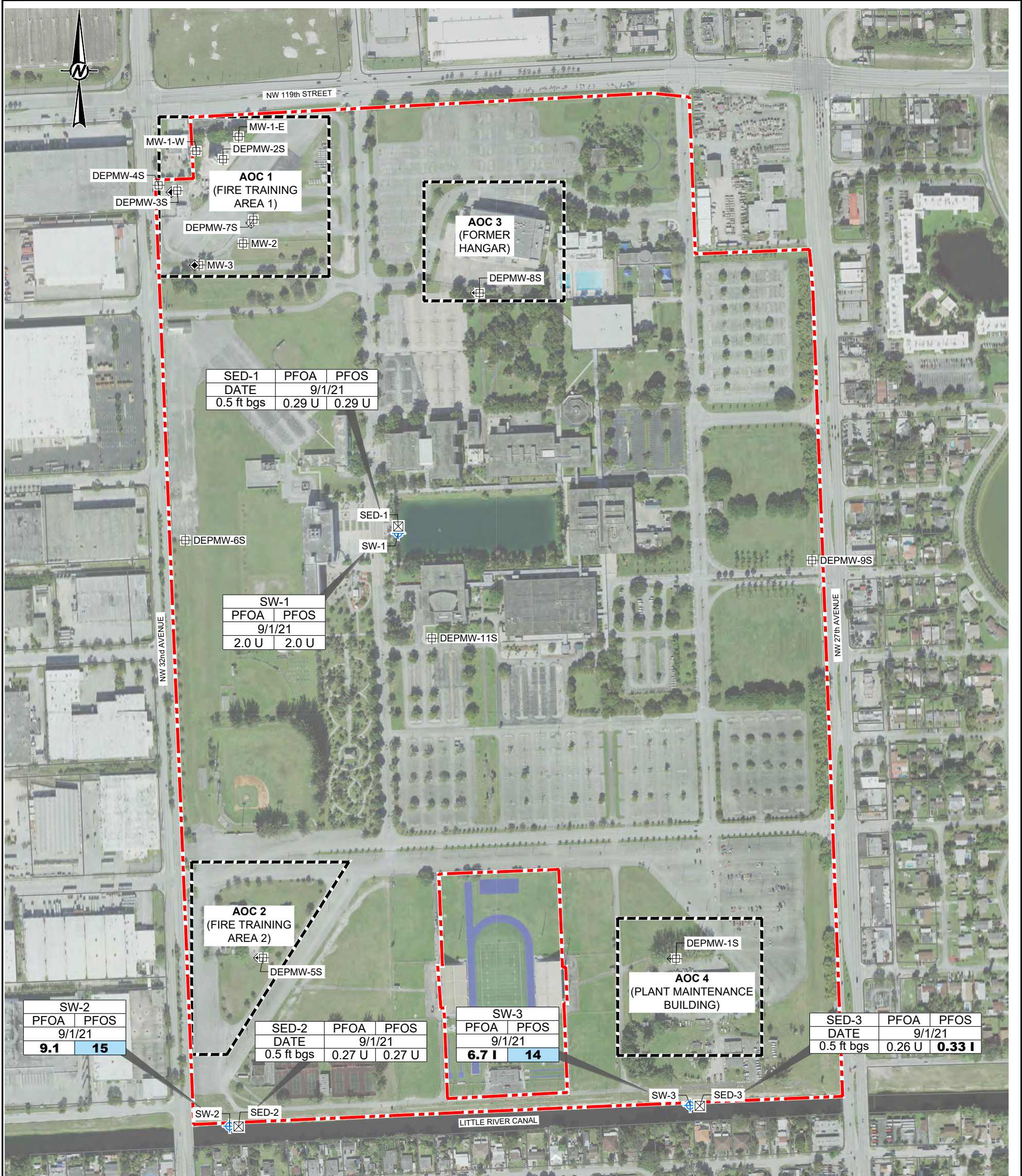
SB-37	PFOA	PFOS
DATE	9/2/21	
0-0.5 ft bgs	0.49 I	8.9
0.5-2 ft bgs	0.20 U	5.4
2-4 ft bgs	0.21 U	0.76 I

SB-32	PFOA	PFOS
DATE	9/1/21	
0-0.5 ft bgs	0.45 I	6.3
0.5-2 ft bgs	0.19 U	1.1
2-4 ft bgs	0.19 U	0.33 I

- REFERENCE(S)**
1. AERIAL IMAGE TAKEN FROM FDEP BUREAU OF SURVEY AND MAPPING (LAND BOUNDARY INFORMATION SYSTEM), DATED JANUARY 2020.

PROVISIONAL SOIL CLEANUP TARGET LEVELS (SCTL)	PFOA IN µg/Kg	PFOS IN µg/Kg
SCTL-LEACHABILITY	2	7
SCTL-RESIDENTIAL	1,300	1,300
SCTL-INDUSTRIAL	25,000	25,000

IF THIS MEASUREMENT DOES NOT MATCH WHAT IS SHOWN, THE SHEET SIZE HAS BEEN MODIFIED FROM ANSIB



NOTES: SEDIMENT ANALYTICAL DATA

1. PROVISIONAL SCTL - FDEP PROVISIONAL SOIL CLEANUP TARGET LEVEL.
2. ALL RESULTS ARE REPORTED IN MICROGRAMS PER KILOGRAM (µg/kg).
3. BOLD FONTS INDICATES CONSTITUENT CONCENTRATION WAS REPORTED ABOVE THE LABORATORY METHOD DETECTION LIMIT.
4. HIGHLIGHTED FONT INDICATES CONSTITUENT CONCENTRATION WAS REPORTED ABOVE THE FDEP PROVISIONAL SOIL CLEANUP TARGET LEVEL.
5. I- REPORTED VALUE IS BETWEEN THE LABORATORY METHOD DETECTION LIMIT AND LABORATORY PRACTICAL QUANTITATION LIMIT.
6. U - THE COMPOUND WAS ANALYZED FOR, BUT NOT DETECTED. THE REPORTED VALUE IS THE METHOD DETECTION LIMIT FOR THE SAMPLE ANALYZED.
7. ft bgs - FEET BELOW GROUND SURFACE.
8. PFOA - PERFLUORO-N-OCTANOIC ACID.
9. PFOS - PERFLUOROOCTANESULFONIC ACID.

PROVISIONAL SOIL CLEANUP TARGET LEVELS (SCTL)	PFOA IN µg/Kg	PFOS IN µg/Kg
SCTL-LEACHABILITY	2	7
SCTL-RESIDENTIAL	1,300	1,300
SCTL-INDUSTRIAL	25,000	25,000

NOTES: SURFACE WATER ANALYTICAL DATA

1. ALL RESULTS ARE REPORTED IN NANOGRAMS PER LITER (ng/L).
2. BOLD FONTS INDICATES CONSTITUENT CONCENTRATION WAS REPORTED ABOVE THE LABORATORY METHOD DETECTION LIMIT.
3. HIGHLIGHTED FONT INDICATES CONSTITUENT CONCENTRATION WAS REPORTED ABOVE THE PROVISIONAL FDEP SURFACE WATER SCREENING LEVEL FOR HUMAN HEALTH.
4. I- REPORTED VALUE IS BETWEEN THE LABORATORY METHOD DETECTION LIMIT AND LABORATORY PRACTICAL QUANTITATION LIMIT.
5. U - THE COMPOUND WAS ANALYZED FOR, BUT NOT DETECTED. THE REPORTED VALUE IS THE METHOD DETECTION LIMIT FOR THE SAMPLE ANALYZED.
6. PFOA - PERFLUORO-N-OCTANOIC ACID.
7. PFOS - PERFLUOROOCTANESULFONIC ACID.

PROVISIONAL SURFACE WATER SCREENING LEVELS	PFOA IN ng/L	PFOS IN ng/L
HUMAN HEALTH (Based on consumption of freshwater and estuarine finfish and shellfish)	500	10
ECOLOGICAL (FRESHWATER)	1,300,000	37,000
ECOLOGICAL (MARINE)	NOT DETERMINED	13,000

REFERENCE(S)
 1. AERIAL IMAGE TAKEN FROM FDEP BUREAU OF SURVEY AND MAPPING (LAND BOUNDARY INFORMATION SYSTEM), DATED JANUARY 2020.

LEGEND

- APPROXIMATE PROPERTY BOUNDARY
- SEDIMENT SAMPLE LOCATIONS
- SURFACE WATER SAMPLE LOCATIONS
- PROPOSED DEEP MONITORING WELL LOCATIONS
- SHALLOW MONITORING WELL LOCATIONS

CLIENT
 FL. DEPARTMENT OF ENVIRONMENTAL PROTECTION

PROJECT
 FDEP MIAMI-DADE COLLEGE FIRE ACADEMY PFAS SOIL AND GROUNDWATER ASSESSMENT

CONSULTANT

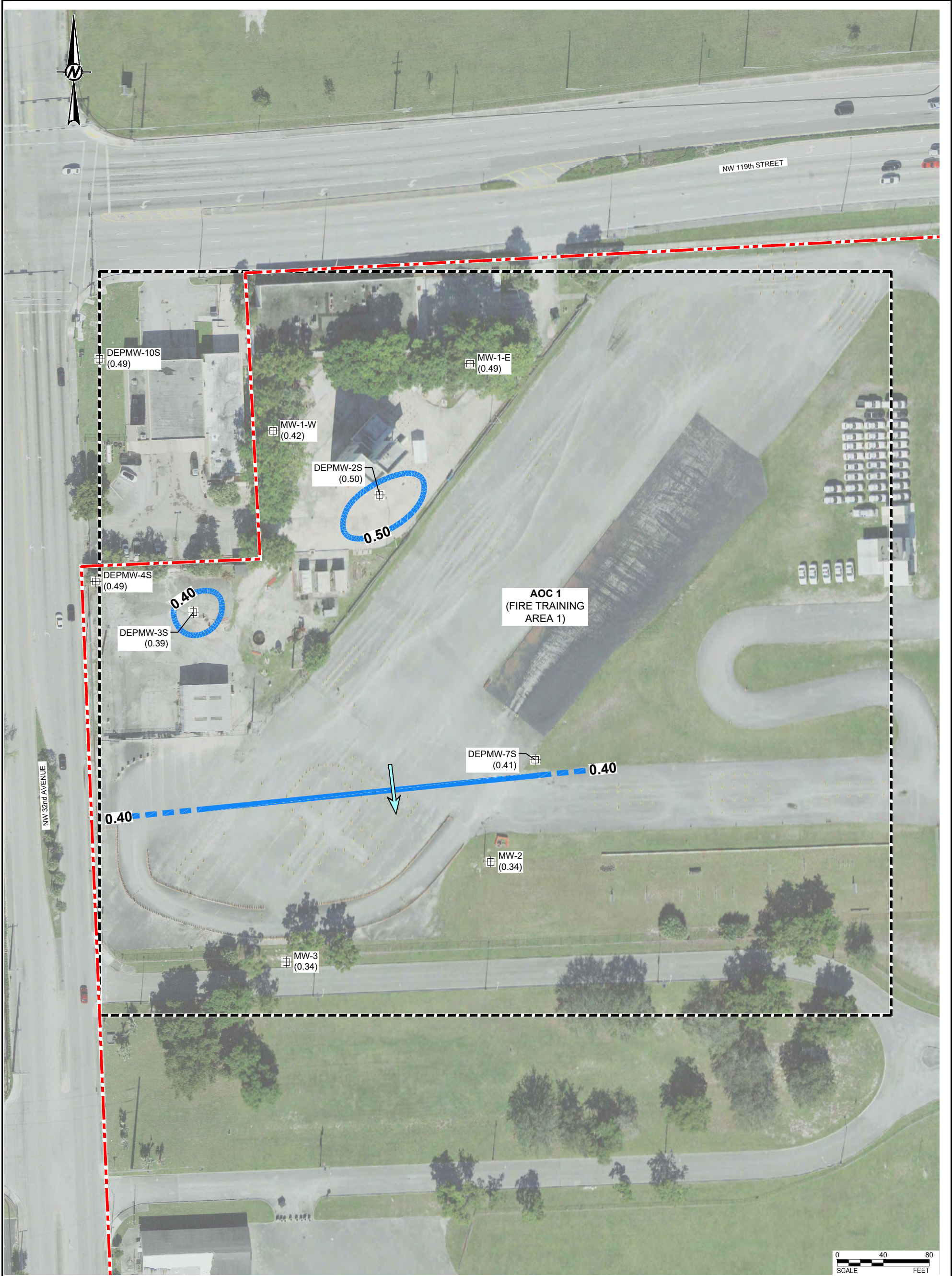
YYYY-MM-DD	2021-05-06
DESIGNED	SN
PREPARED	BCL
REVIEWED	SN
APPROVED	RMW

TITLE
SEDIMENT AND SURFACE WATER ANALYTICAL RESULTS

PROJECT NO.	CONTROL	REV.	FIGURE
21-451173	21451173-B010	----	8



IF THIS MEASUREMENT DOES NOT MATCH WHAT IS SHOWN, THE SHEET SIZE HAS BEEN MODIFIED FROM: ANSI B



	APPROXIMATE PROPERTY BOUNDARY
	SHALLOW MONITORING WELL LOCATIONS
(0.46)	GROUNDWATER ELEVATION
	GROUNDWATER CONTOUR INTERVAL (DASHED WHERE INFERRED)
	ESTIMATED GROUNDWATER FLOW DIRECTION

REFERENCE(S)

1. AERIAL IMAGE TAKEN FROM FDEP BUREAU OF SURVEY AND MAPPING (LAND BOUNDARY INFORMATION SYSTEM), DATED JANUARY 2020.

NOTE(S)

1. ELEVATIONS ARE IN FEET AND RELATIVE TO NAVD88/NGVD29.
2. HORIZONTAL DATUM RELATIVE TO NAD83 FLORIDA STATE PLANES, EAST ZONE, US FOOT/NAD27 FLORIDA STATE PLANES, EAST ZONE(901), US FOOT

CLIENT
FL. DEPARTMENT OF ENVIRONMENTAL PROTECTION

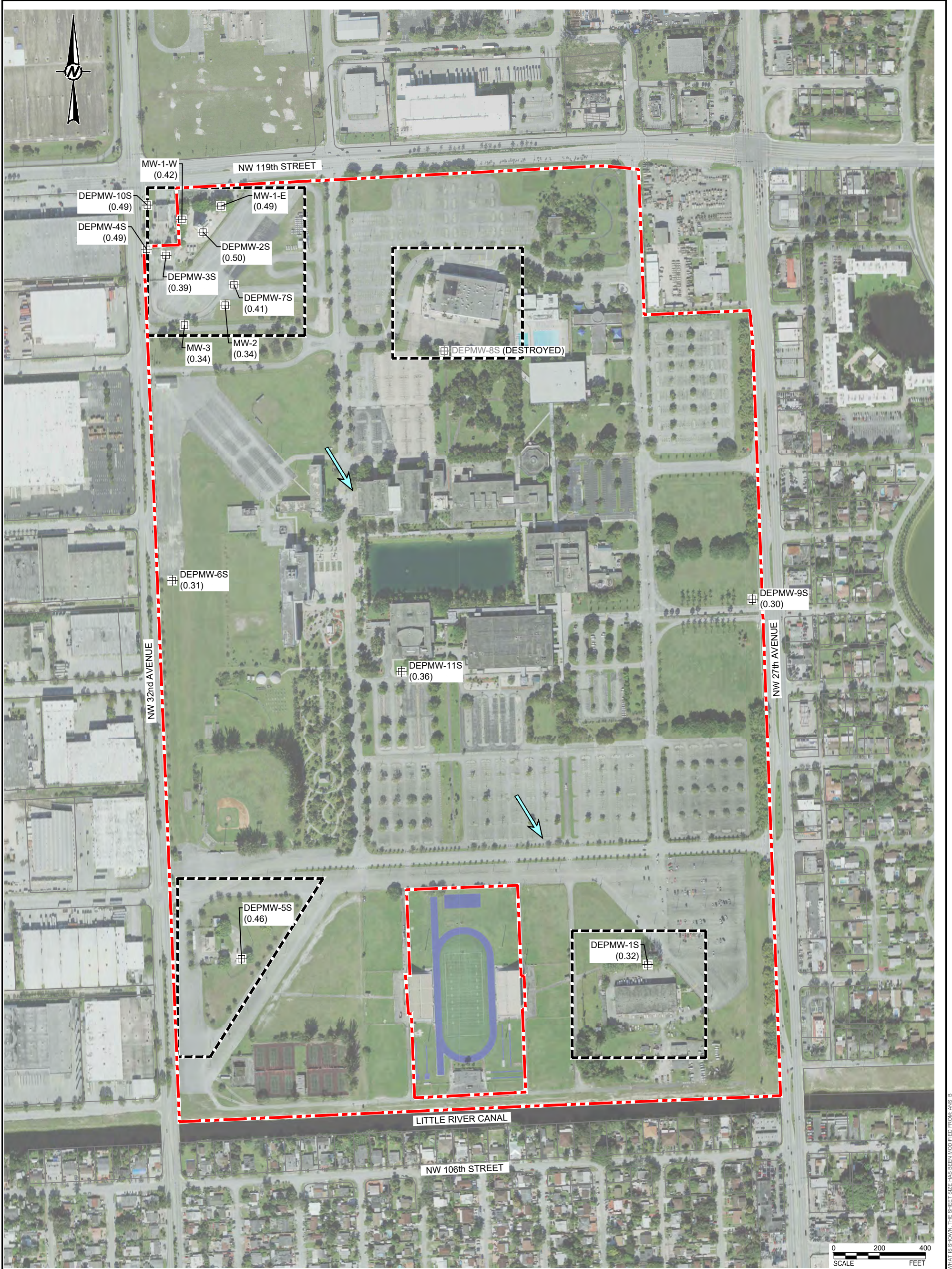
PROJECT
FDEP MIAMI-DADE COLLEGE FIRE ACADEMY PFAS SOIL AND GROUNDWATER ASSESSMENT

CONSULTANT	YYYY-MM-DD	2022-04-22
	DESIGNED	SN
	PREPARED	BCL
	REVIEWED	SN
	APPROVED	RMW

TITLE
POTENTIOMETRIC SURFACE MAP OF THE SHALLOW SURFICIAL AQUIFER - AOC 1
(FEBRUARY 2022)

PROJECT NO.	CONTROL	REV.	FIGURE
21-451173	21451173-B012	----	9

IF THIS MEASUREMENT DOES NOT MATCH WHAT IS SHOWN, THE SHEET SIZE HAS BEEN MODIFIED FROM: ANSI B



LEGEND

	APPROXIMATE PROPERTY BOUNDARY
	SHALLOW MONITORING WELL LOCATIONS
(0.46)	GROUNDWATER ELEVATION
	ESTIMATED GROUNDWATER FLOW DIRECTION

REFERENCE(S)

- AERIAL IMAGE TAKEN FROM FDEP BUREAU OF SURVEY AND MAPPING (LAND BOUNDARY INFORMATION SYSTEM), DATED JANUARY 2020.

NOTE(S)

- ELEVATIONS ARE IN FEET AND RELATIVE TO NAVD88/NGVD29.
- HORIZONTAL DATUM RELATIVE TO NAD83 FLORIDA STATE PLANES, EAST ZONE, US FOOT/NAD27 FLORIDA STATE PLANES, EAST ZONE(901), US FOOT

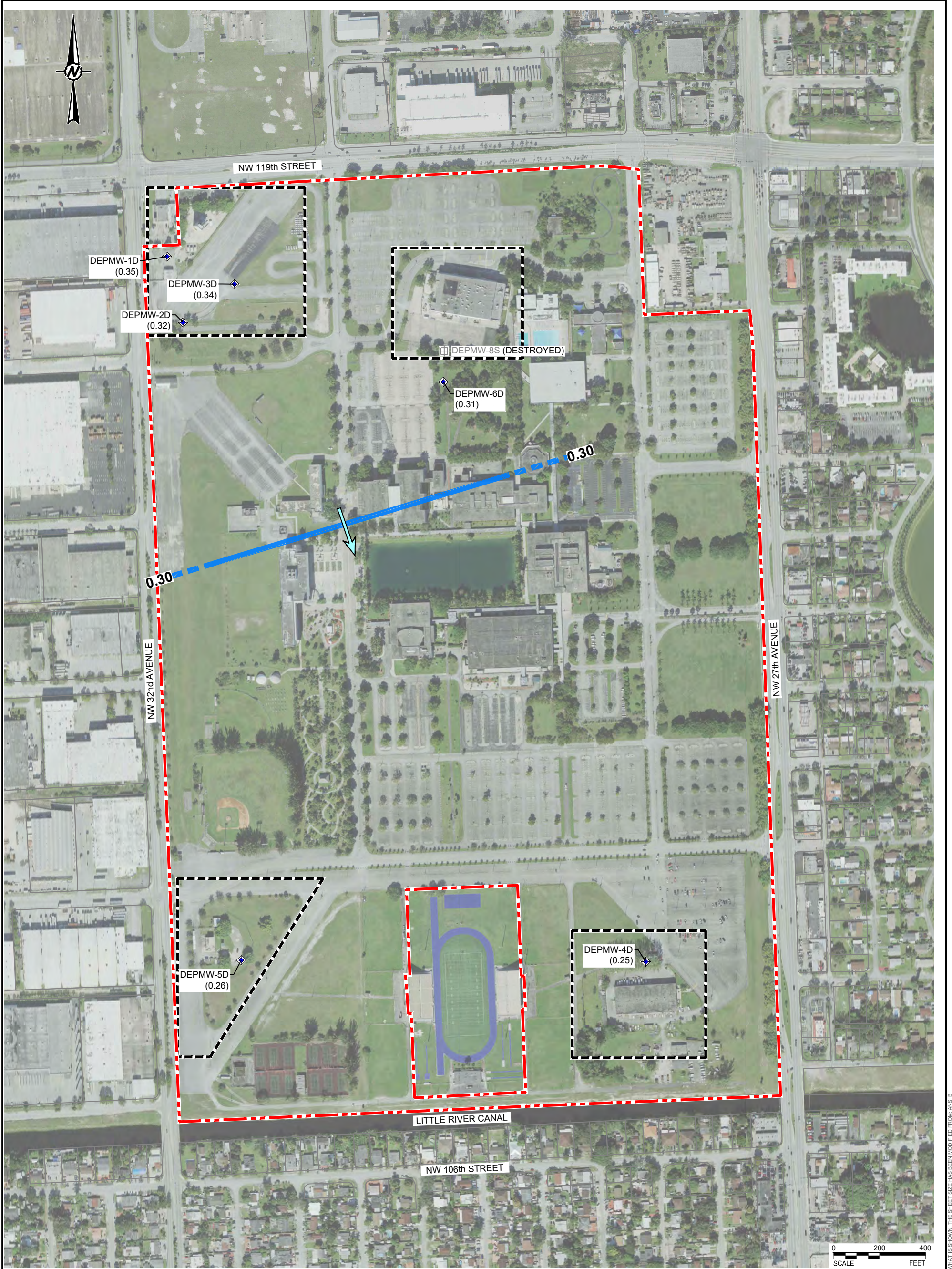
CLIENT
FL. DEPARTMENT OF ENVIRONMENTAL PROTECTION

PROJECT
FDEP MIAMI-DADE COLLEGE FIRE ACADEMY PFAS SOIL AND GROUNDWATER ASSESSMENT

CONSULTANT	YYYY-MM-DD	2022-04-22
	DESIGNED	SN
	PREPARED	BCL
	REVIEWED	SN
	APPROVED	RMW

TITLE
POTENTIOMETRIC SURFACE MAP OF THE SHALLOW SURFICIAL AQUIFER

PROJECT NO. 21-451173	CONTROL 21451173-B013	REV. ----	FIGURE 10
--------------------------	--------------------------	--------------	---------------------



LEGEND

- - - - APPROXIMATE PROPERTY BOUNDARY
- ◆ DEEP MONITORING WELL LOCATIONS
- (0.25) GROUNDWATER ELEVATION
- - - - **0.30** GROUNDWATER CONTOUR INTERVAL (DASHED WHERE INFERRED)
- ➔ ESTIMATED GROUNDWATER FLOW DIRECTION

REFERENCE(S)

1. AERIAL IMAGE TAKEN FROM FDEP BUREAU OF SURVEY AND MAPPING (LAND BOUNDARY INFORMATION SYSTEM), DATED JANUARY 2020.

NOTE(S)

1. ELEVATIONS ARE IN FEET AND RELATIVE TO NAVD88/NGVD29.
2. HORIZONTAL DATUM RELATIVE TO NAD83 FLORIDA STATE PLANES, EAST ZONE, US FOOT/NAD27 FLORIDA STATE PLANES, EAST ZONE(901), US FOOT

CLIENT
FL. DEPARTMENT OF ENVIRONMENTAL PROTECTION

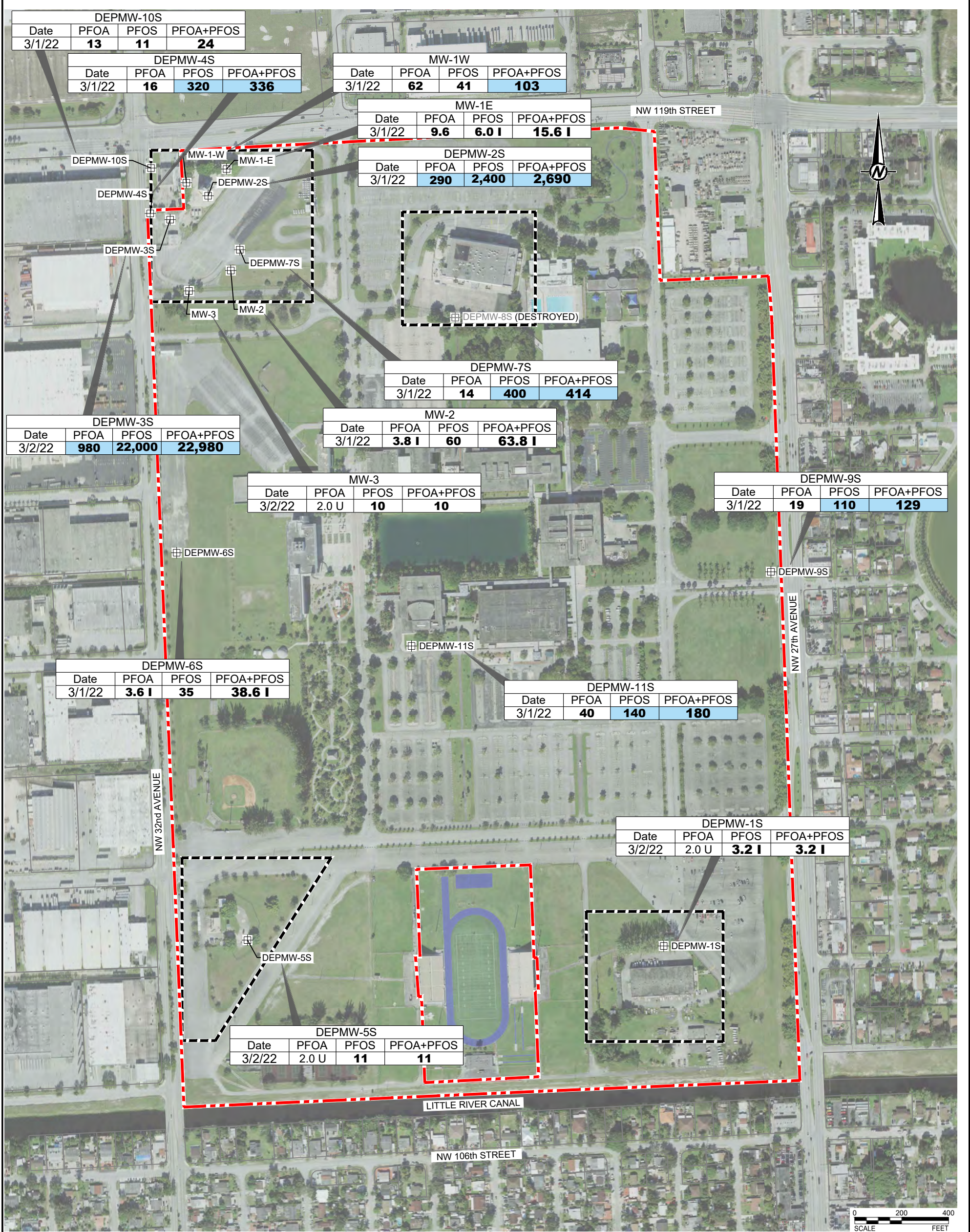
PROJECT
FDEP MIAMI-DADE COLLEGE FIRE ACADEMY PFAS SOIL AND GROUNDWATER ASSESSMENT

CONSULTANT	YYYY-MM-DD	2022-04-22
wsp GOLDER	DESIGNED	SN
	PREPARED	BCL
	REVIEWED	SN
	APPROVED	RMW

TITLE
POTENTIOMETRIC SURFACE MAP OF THE DEEP SURFICIAL AQUIFER (FEBRUARY 2022)

PROJECT NO.	CONTROL	REV.	FIGURE
21-451173	21451173-B014	----	11

IF THIS MEASUREMENT DOES NOT MATCH WHAT IS SHOWN, THE SHEET SIZE HAS BEEN MODIFIED FROM: ANSI B



- NOTE(S)**
1. PROVISIONAL GCTL - FDEP PROVISIONAL GROUNDWATER CLEANUP TARGET LEVEL.
 2. ALL RESULTS ARE REPORTED IN NANOGRAMS PER LITER (ng/L).
 3. BOLD FONTS INDICATES CONSTITUENT CONCENTRATION WAS REPORTED ABOVE THE LABORATORY METHOD DETECTION LIMIT.
 4. HIGHLIGHTED FONT INDICATES CONSTITUENT CONCENTRATION WAS REPORTED ABOVE THE PROVISIONAL GROUNDWATER CLEANUP LEVEL.
 5. I- REPORTED VALUE IS BETWEEN THE LABORATORY METHOD DETECTION LIMIT AND LABORATORY PRACTICAL QUANTITATION LIMIT.
 6. U - THE COMPOUND WAS ANALYZED FOR, BUT NOT DETECTED. THE REPORTED VALUE IS THE METHOD DETECTION LIMIT FOR THE SAMPLE ANALYZED.
 7. ft bgs - FEET BELOW GROUND SURFACE.
 8. PFOA - PERFLUORO-N-OCTANOIC ACID.
 9. PFOS - PERFLUOROCTANESULFONIC ACID.

LEGEND

--- APPROXIMATE PROPERTY BOUNDARY

⊕ SHALLOW MONITORING WELL LOCATIONS

PROVISIONAL GROUND WATER CLEANUP TARGET LEVEL (GCTL)	PFOA IN ng/L	PFOS IN ng/L	SUM OF PFOA + PFOS IN ng/L
PGCTL	70	70	70

- REFERENCE(S)**
1. AERIAL IMAGE TAKEN FROM FDEP BUREAU OF SURVEY AND MAPPING (LAND BOUNDARY INFORMATION SYSTEM), DATED JANUARY 2020.

CLIENT
FL. DEPARTMENT OF ENVIRONMENTAL PROTECTION

CONSULTANT

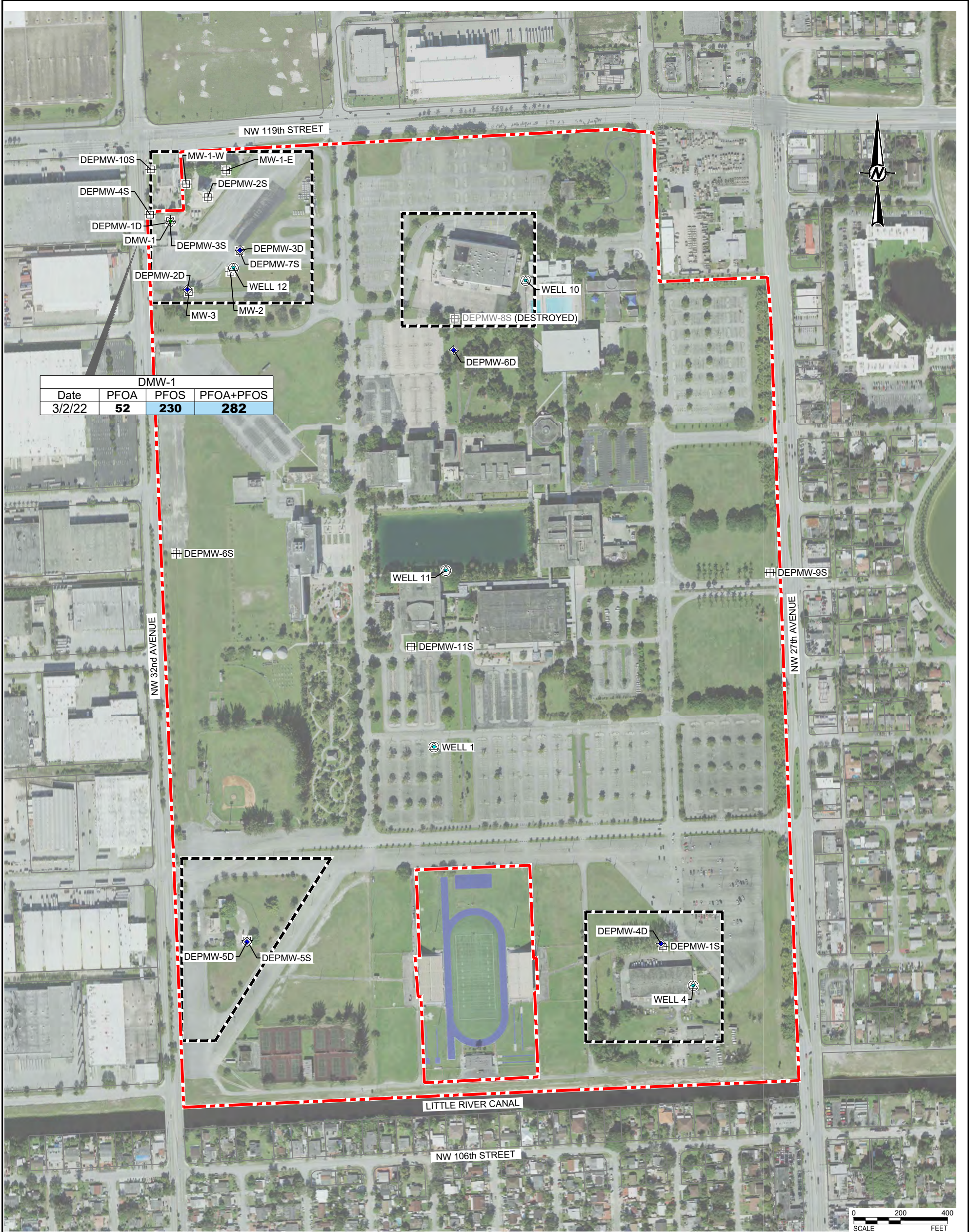
YYYY-MM-DD	2022-04-22
DESIGNED	SN
PREPARED	BCL
REVIEWED	SN
APPROVED	RMW

PROJECT
FDEP MIAMI-DADE COLLEGE FIRE ACADEMY PFAS SOIL AND GROUNDWATER ASSESSMENT

TITLE
GROUNDWATER ANALYTICAL RESULTS FOR THE SHALLOW SURFICIAL AQUIFER

PROJECT NO.	CONTROL	REV.	FIGURE
21-451173	21451173-B015	----	12

IF THIS MEASUREMENT DOES NOT MATCH WHAT IS SHOWN, THE SHEET SIZE HAS BEEN MODIFIED FROM: ANSI B



NOTE(S)

1. PROVISIONAL GCTL - FDEP PROVISIONAL GROUNDWATER CLEANUP TARGET LEVEL.
2. ALL RESULTS ARE REPORTED IN NANOGRAMS PER LITER (ng/L).
3. BOLD FONTS INDICATES CONSTITUENT CONCENTRATION WAS REPORTED ABOVE THE LABORATORY METHOD DETECTION LIMIT.
4. HIGHLIGHTED FONT INDICATES CONSTITUENT CONCENTRATION WAS REPORTED ABOVE THE PROVISIONAL GROUNDWATER CLEANUP LEVEL.
5. I- REPORTED VALUE IS BETWEEN THE LABORATORY METHOD DETECTION LIMIT AND LABORATORY PRACTICAL QUANTITATION LIMIT.
6. U - THE COMPOUND WAS ANALYZED FOR, BUT NOT DETECTED. THE REPORTED VALUE IS THE METHOD DETECTION LIMIT FOR THE SAMPLE ANALYZED.
7. ft bgs - FEET BELOW GROUND SURFACE.
8. PFOA - PERFLUORO-N-OCTANOIC ACID.
9. PFOS - PERFLUOROCTANESULFONIC ACID.

LEGEND

- APPROXIMATE PROPERTY BOUNDARY
- SHALLOW MONITORING WELL LOCATIONS
- INTERMEDIATE MONITORING WELL LOCATIONS
- DEEP MONITORING WELL LOCATIONS
- IRRIGATION WELL LOCATIONS

PROVISIONAL GROUND WATER CLEANUP TARGET LEVEL (GCTL)	PFOA IN ng/L	PFOS IN ng/L	SUM OF PFOA + PFOS IN ng/L
PGCTL	70	70	70

REFERENCE(S)

1. AERIAL IMAGE TAKEN FROM FDEP BUREAU OF SURVEY AND MAPPING (LAND BOUNDARY INFORMATION SYSTEM), DATED JANUARY 2020.

CLIENT

FL. DEPARTMENT OF ENVIRONMENTAL PROTECTION

CONSULTANT

YYYY-MM-DD	2022-04-22
DESIGNED	SN
PREPARED	BCL
REVIEWED	SN
APPROVED	RMW

PROJECT

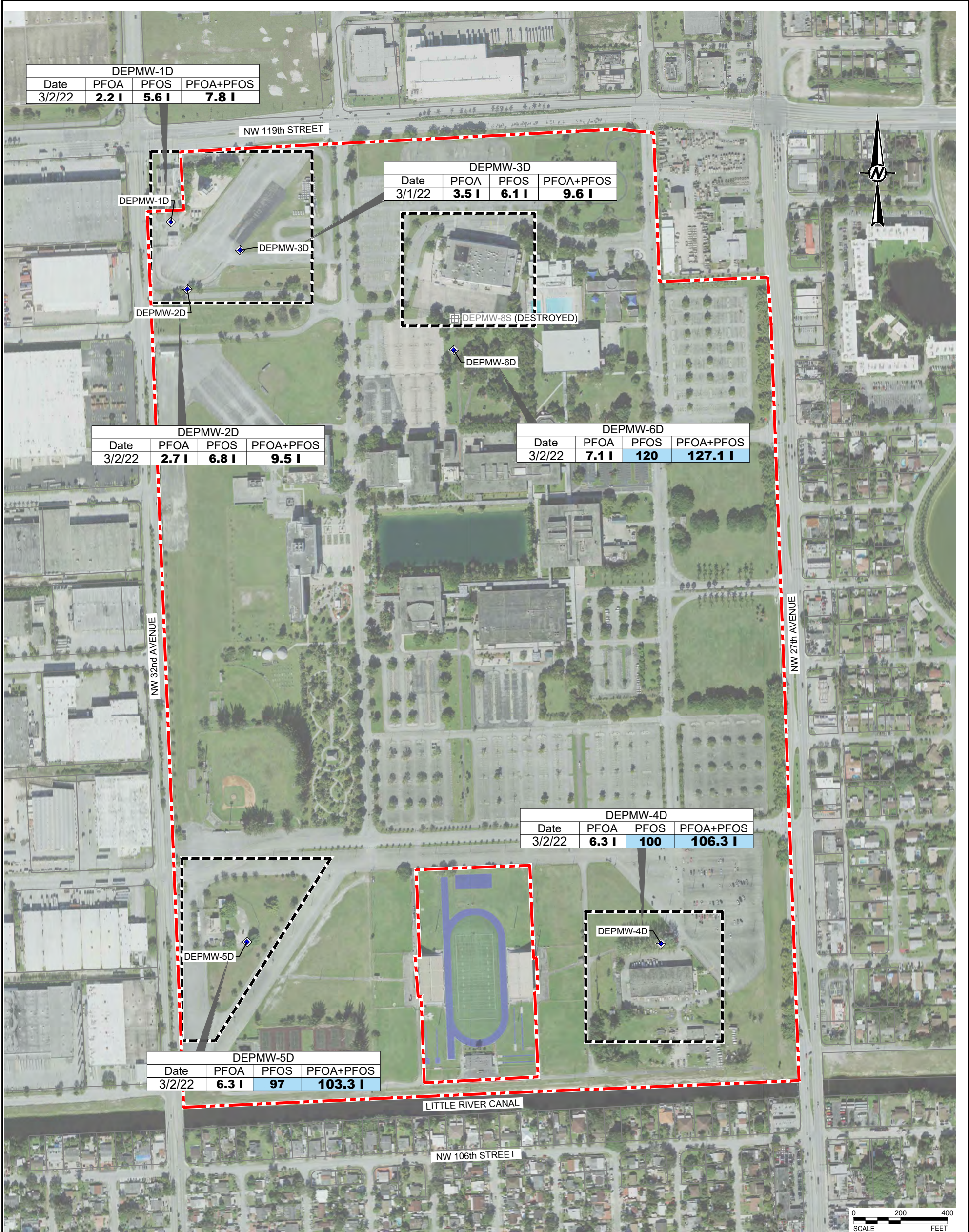
FDEP MIAMI-DADE COLLEGE FIRE ACADEMY PFAS SOIL AND GROUNDWATER ASSESSMENT

TITLE

GROUNDWATER ANALYTICAL RESULTS FOR THE INTERMEDIATE SURFICIAL AQUIFER

PROJECT NO.	CONTROL	REV.	FIGURE
21-451173	21451173-B016	----	13

1in IF THIS MEASUREMENT DOES NOT MATCH WHAT IS SHOWN, THE SHEET SIZE HAS BEEN MODIFIED FROM: ANSI B



DEPMW-1D			
Date	PFOA	PFOS	PFOA+PFOS
3/2/22	2.2 I	5.6 I	7.8 I

DEPMW-3D			
Date	PFOA	PFOS	PFOA+PFOS
3/1/22	3.5 I	6.1 I	9.6 I

DEPMW-2D			
Date	PFOA	PFOS	PFOA+PFOS
3/2/22	2.7 I	6.8 I	9.5 I

DEPMW-6D			
Date	PFOA	PFOS	PFOA+PFOS
3/2/22	7.1 I	120	127.1 I

DEPMW-4D			
Date	PFOA	PFOS	PFOA+PFOS
3/2/22	6.3 I	100	106.3 I

DEPMW-5D			
Date	PFOA	PFOS	PFOA+PFOS
3/2/22	6.3 I	97	103.3 I

LEGEND

- - - - APPROXIMATE PROPERTY BOUNDARY
- ◆ DEEP MONITORING WELL LOCATIONS

PROVISIONAL GROUND WATER CLEANUP TARGET LEVEL (GCTL)	PFOA IN ng/L	PFOS IN ng/L	SUM OF PFOA + PFOS IN ng/L
PGCTL	70	70	70

REFERENCE(S)

1. AERIAL IMAGE TAKEN FROM FDEP BUREAU OF SURVEY AND MAPPING (LAND BOUNDARY INFORMATION SYSTEM), DATED JANUARY 2020.

NOTE(S)

1. PROVISIONAL GCTL - FDEP PROVISIONAL GROUNDWATER CLEANUP TARGET LEVEL.
2. ALL RESULTS ARE REPORTED IN NANOGRAMS PER LITER (ng/L).
3. BOLD FONTS INDICATES CONSTITUENT CONCENTRATION WAS REPORTED ABOVE THE LABORATORY METHOD DETECTION LIMIT.
4. HIGHLIGHTED FONT INDICATES CONSTITUENT CONCENTRATION WAS REPORTED ABOVE THE PROVISIONAL GROUNDWATER CLEANUP LEVEL.
5. I- REPORTED VALUE IS BETWEEN THE LABORATORY METHOD DETECTION LIMIT AND LABORATORY PRACTICAL QUANTITATION LIMIT.
6. U - THE COMPOUND WAS ANALYZED FOR, BUT NOT DETECTED. THE REPORTED VALUE IS THE METHOD DETECTION LIMIT FOR THE SAMPLE ANALYZED.
7. ft bgs - FEET BELOW GROUND SURFACE.
8. PFOA - PERFLUORO-N-OCTANOIC ACID.
9. PFOS - PERFLUOROCTANESULFONIC ACID.

CLIENT

FL. DEPARTMENT OF ENVIRONMENTAL PROTECTION

CONSULTANT



YYYY-MM-DD 2022-04-22

DESIGNED SN

PREPARED BCL

REVIEWED SN

APPROVED RMW

PROJECT

FDEP MIAMI-DADE COLLEGE FIRE ACADEMY PFAS SOIL AND GROUNDWATER ASSESSMENT

TITLE

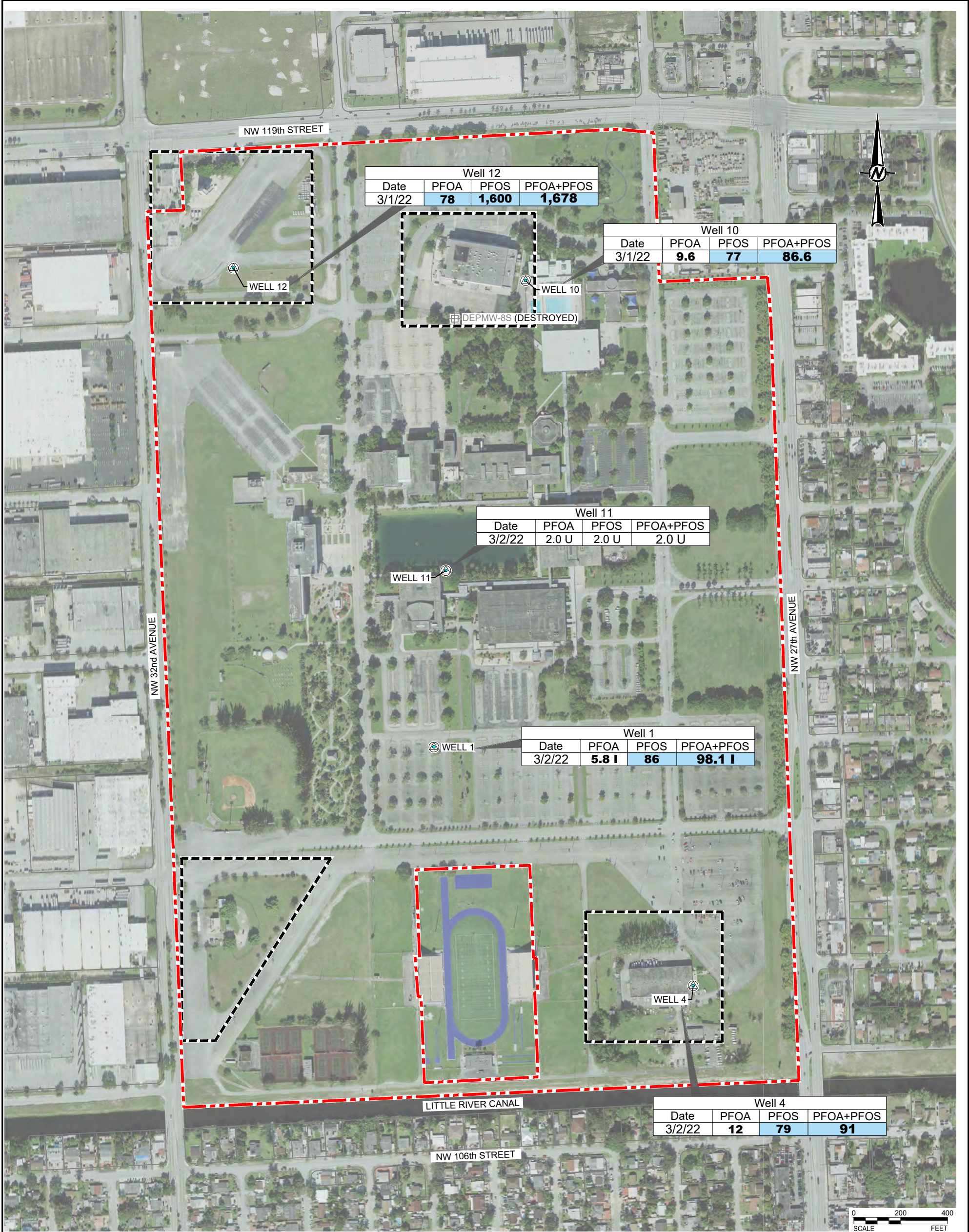
GROUNDWATER ANALYTICAL RESULTS FOR THE DEEP SURFICIAL AQUIFER

PROJECT NO.
21-451173

CONTROL
21451173-B017

REV.

FIGURE
14



NOTE(S)

1. PROVISIONAL GCTL - FDEP PROVISIONAL GROUNDWATER CLEANUP TARGET LEVEL.
2. ALL RESULTS ARE REPORTED IN NANOGRAMS PER LITER (ng/L).
3. BOLD FONTS INDICATES CONSTITUENT CONCENTRATION WAS REPORTED ABOVE THE LABORATORY METHOD DETECTION LIMIT.
4. HIGHLIGHTED FONT INDICATES CONSTITUENT CONCENTRATION WAS REPORTED ABOVE THE PROVISIONAL GROUNDWATER CLEANUP LEVEL.
5. I- REPORTED VALUE IS BETWEEN THE LABORATORY METHOD DETECTION LIMIT AND LABORATORY PRACTICAL QUANTITATION LIMIT.
6. U - THE COMPOUND WAS ANALYZED FOR, BUT NOT DETECTED. THE REPORTED VALUE IS THE METHOD DETECTION LIMIT FOR THE SAMPLE ANALYZED.
7. ft bgs - FEET BELOW GROUND SURFACE.
8. PFOA - PERFLUORO-N-OCTANOIC ACID.
9. PFOS - PERFLUOROCTANESULFONIC ACID.

LEGEND

- APPROXIMATE PROPERTY BOUNDARY
- ⊕ IRRIGATION WELL LOCATIONS

PROVISIONAL GROUND WATER CLEANUP TARGET LEVEL (GCTL)	PFOA IN ng/L	PFOS IN ng/L	SUM OF PFOA + PFOS IN ng/L
PGCTL	70	70	70

REFERENCE(S)

1. AERIAL IMAGE TAKEN FROM FDEP BUREAU OF SURVEY AND MAPPING (LAND BOUNDARY INFORMATION SYSTEM), DATED JANUARY 2020.

CLIENT

FL. DEPARTMENT OF ENVIRONMENTAL PROTECTION

CONSULTANT

YYYY-MM-DD	2022-04-22
DESIGNED	SN
PREPARED	BCL
REVIEWED	SN
APPROVED	RMW

PROJECT

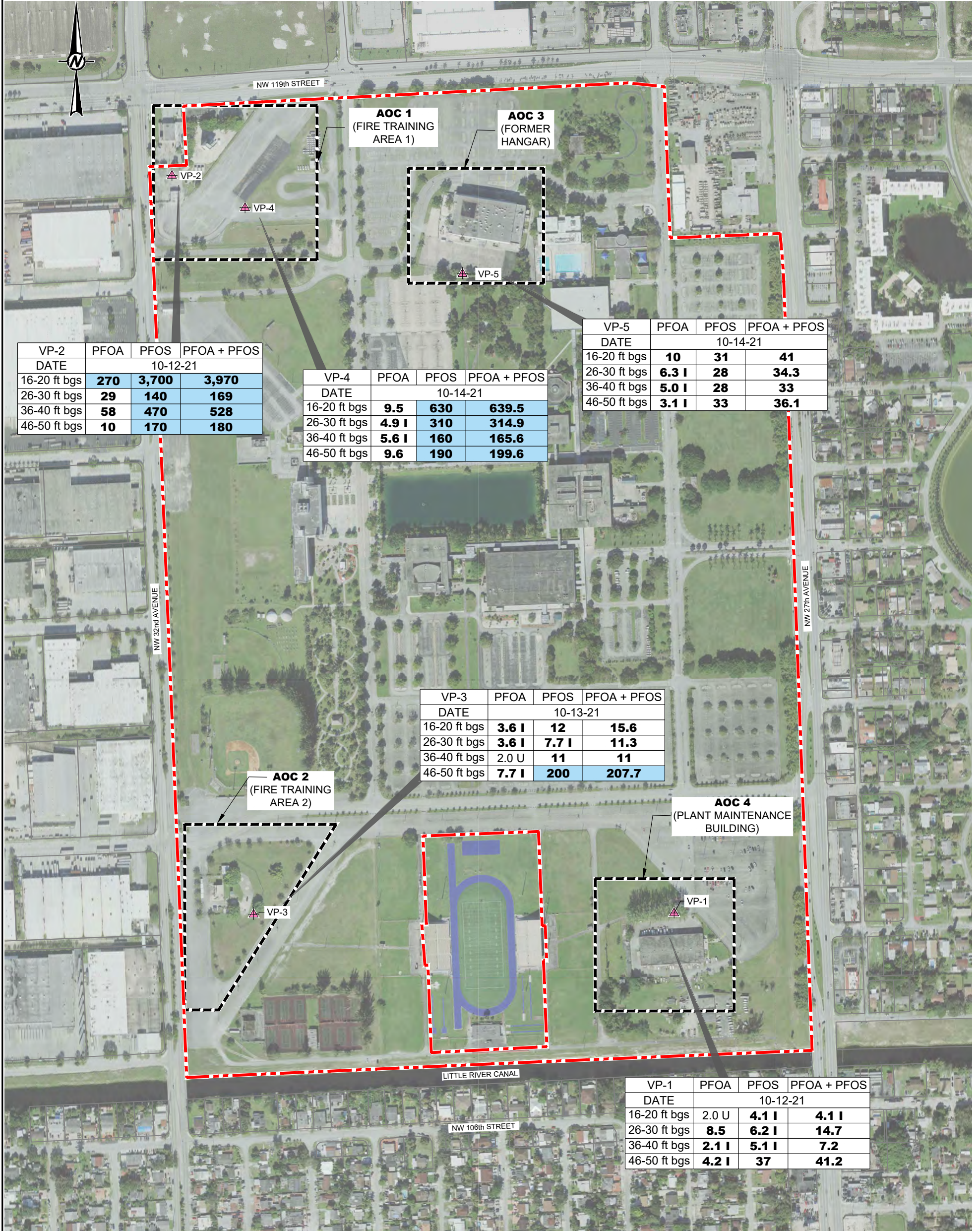
FDEP MIAMI-DADE COLLEGE FIRE ACADEMY PFAS SOIL AND GROUNDWATER ASSESSMENT

TITLE

GROUNDWATER ANALYTICAL RESULTS FOR IRRIGATION WELLS

PROJECT NO.	CONTROL	REV.	FIGURE
21-451173	21451173-B018	----	15

IF THIS MEASUREMENT DOES NOT MATCH WHAT IS SHOWN, THE SHEET SIZE HAS BEEN MODIFIED FROM: ANSI B



VP-2	PFOA	PFOS	PFOA + PFOS
DATE	10-12-21		
16-20 ft bgs	270	3,700	3,970
26-30 ft bgs	29	140	169
36-40 ft bgs	58	470	528
46-50 ft bgs	10	170	180

VP-4	PFOA	PFOS	PFOA + PFOS
DATE	10-14-21		
16-20 ft bgs	9.5	630	639.5
26-30 ft bgs	4.9 I	310	314.9
36-40 ft bgs	5.6 I	160	165.6
46-50 ft bgs	9.6	190	199.6

VP-5	PFOA	PFOS	PFOA + PFOS
DATE	10-14-21		
16-20 ft bgs	10	31	41
26-30 ft bgs	6.3 I	28	34.3
36-40 ft bgs	5.0 I	28	33
46-50 ft bgs	3.1 I	33	36.1

VP-3	PFOA	PFOS	PFOA + PFOS
DATE	10-13-21		
16-20 ft bgs	3.6 I	12	15.6
26-30 ft bgs	3.6 I	7.7 I	11.3
36-40 ft bgs	2.0 U	11	11
46-50 ft bgs	7.7 I	200	207.7

VP-1	PFOA	PFOS	PFOA + PFOS
DATE	10-12-21		
16-20 ft bgs	2.0 U	4.1 I	4.1 I
26-30 ft bgs	8.5	6.2 I	14.7
36-40 ft bgs	2.1 I	5.1 I	7.2
46-50 ft bgs	4.2 I	37	41.2

NOTE(S)

- PROVISIONAL GCTL - FDEP PROVISIONAL GROUNDWATER CLEANUP TARGET LEVEL.
- ALL RESULTS ARE REPORTED IN NANOGRAMS PER LITER (ng/L).
- BOLD FONTS INDICATES CONSTITUENT CONCENTRATION WAS REPORTED ABOVE THE LABORATORY METHOD DETECTION LIMIT.
- HIGHLIGHTED FONT INDICATES CONSTITUENT CONCENTRATION WAS REPORTED ABOVE THE PROVISIONAL GROUNDWATER CLEANUP LEVEL.
- I- REPORTED VALUE IS BETWEEN THE LABORATORY METHOD DETECTION LIMIT AND LABORATORY PRACTICAL QUANTITATION LIMIT.
- U - THE COMPOUND WAS ANALYZED FOR, BUT NOT DETECTED. THE REPORTED VALUE IS THE METHOD DETECTION LIMIT FOR THE SAMPLE ANALYZED.
- ft bgs - FEET BELOW GROUND SURFACE.
- PFOA - PERFLUORO-N-OCTANOIC ACID.
- PFOS - PERFLUOROOCTANESULFONIC ACID.

LEGEND

- APPROXIMATE PROPERTY BOUNDARY
- VERTICAL GROUNDWATER PROFILING LOCATIONS

PROVISIONAL GROUND WATER CLEANUP TARGET LEVEL (GCTL)	PFOA IN ng/L	PFOS IN ng/L	SUM OF PFOA + PFOS IN ng/L
GCTL	70	70	70

REFERENCE(S)

- AERIAL IMAGE TAKEN FROM FDEP BUREAU OF SURVEY AND MAPPING (LAND BOUNDARY INFORMATION SYSTEM), DATED JANUARY 2020.

CLIENT

FL. DEPARTMENT OF ENVIRONMENTAL PROTECTION

CONSULTANT

wsp GOLDER

YYYY-MM-DD 2021-05-06

DESIGNED SN
PREPARED BCL
REVIEWED SN
APPROVED RMW

PROJECT

FDEP MIAMI-DADE COLLEGE FIRE ACADEMY PFAS SOIL AND GROUNDWATER ASSESSMENT

TITLE

VERTICAL GROUNDWATER PROFILING ANALYTICAL RESULTS



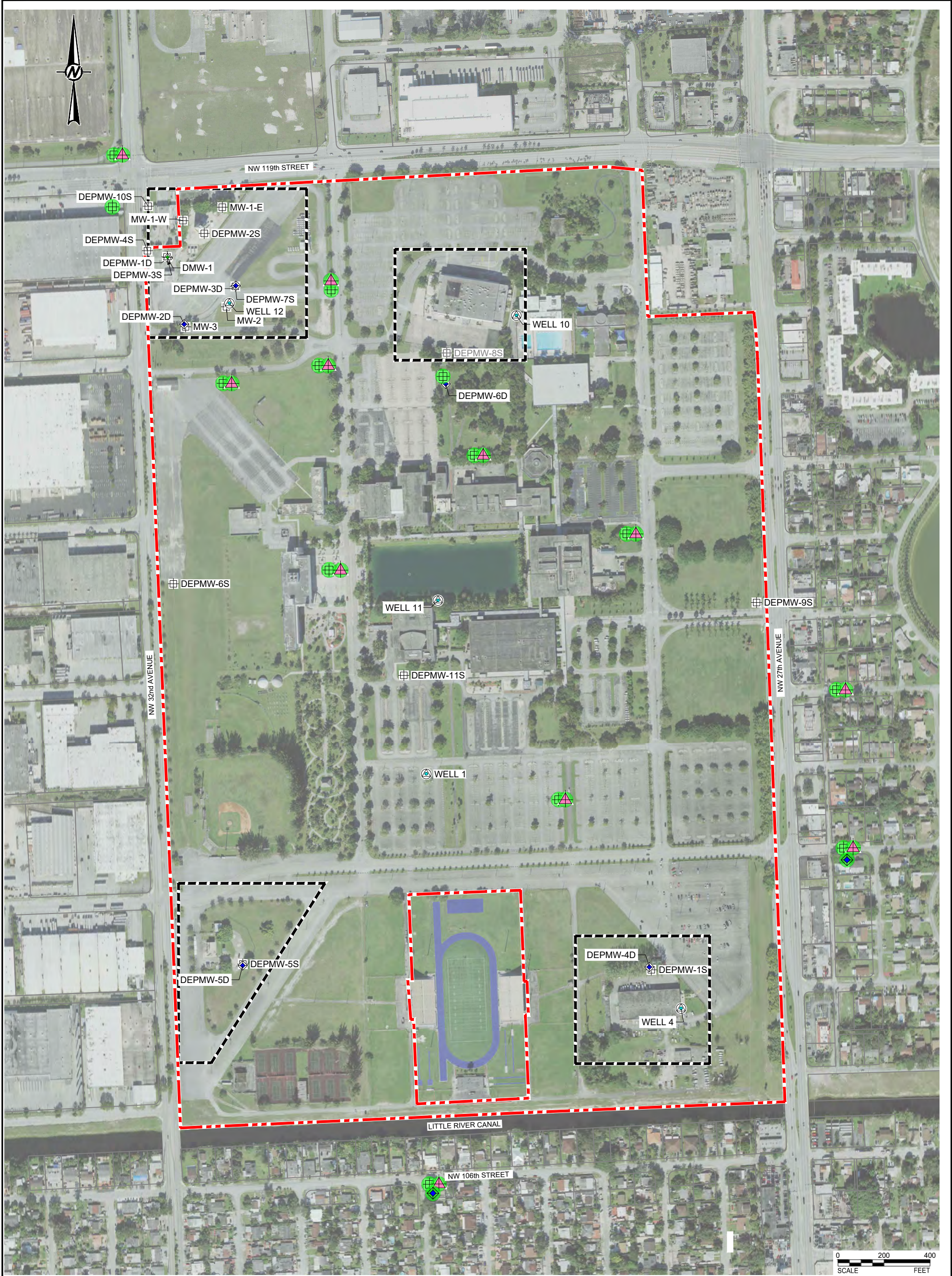
PROJECT NO. 21-451173

CONTROL 21451173-B011

REV. ----

FIGURE 16

IF THIS MEASUREMENT DOES NOT MATCH WHAT IS SHOWN, THE SHEET SIZE HAS BEEN MODIFIED FROM: ANSI B



LEGEND

	APPROXIMATE PROPERTY BOUNDARY
	SHALLOW MONITORING WELL LOCATIONS
	INTERMEDIATE MONITORING WELL LOCATIONS
	DEEP MONITORING WELL LOCATIONS
	IRRIGATION WELL LOCATIONS
	PROPOSED VERTICAL GROUNDWATER PROFILING LOCATIONS
	PROPOSED SHALLOW MONITORING WELL LOCATIONS
	PROPOSED DEEP MONITORING WELL LOCATIONS

REFERENCE(S)

- AERIAL IMAGE TAKEN FROM FDEP BUREAU OF SURVEY AND MAPPING (LAND BOUNDARY INFORMATION SYSTEM), DATED JANUARY 2020.

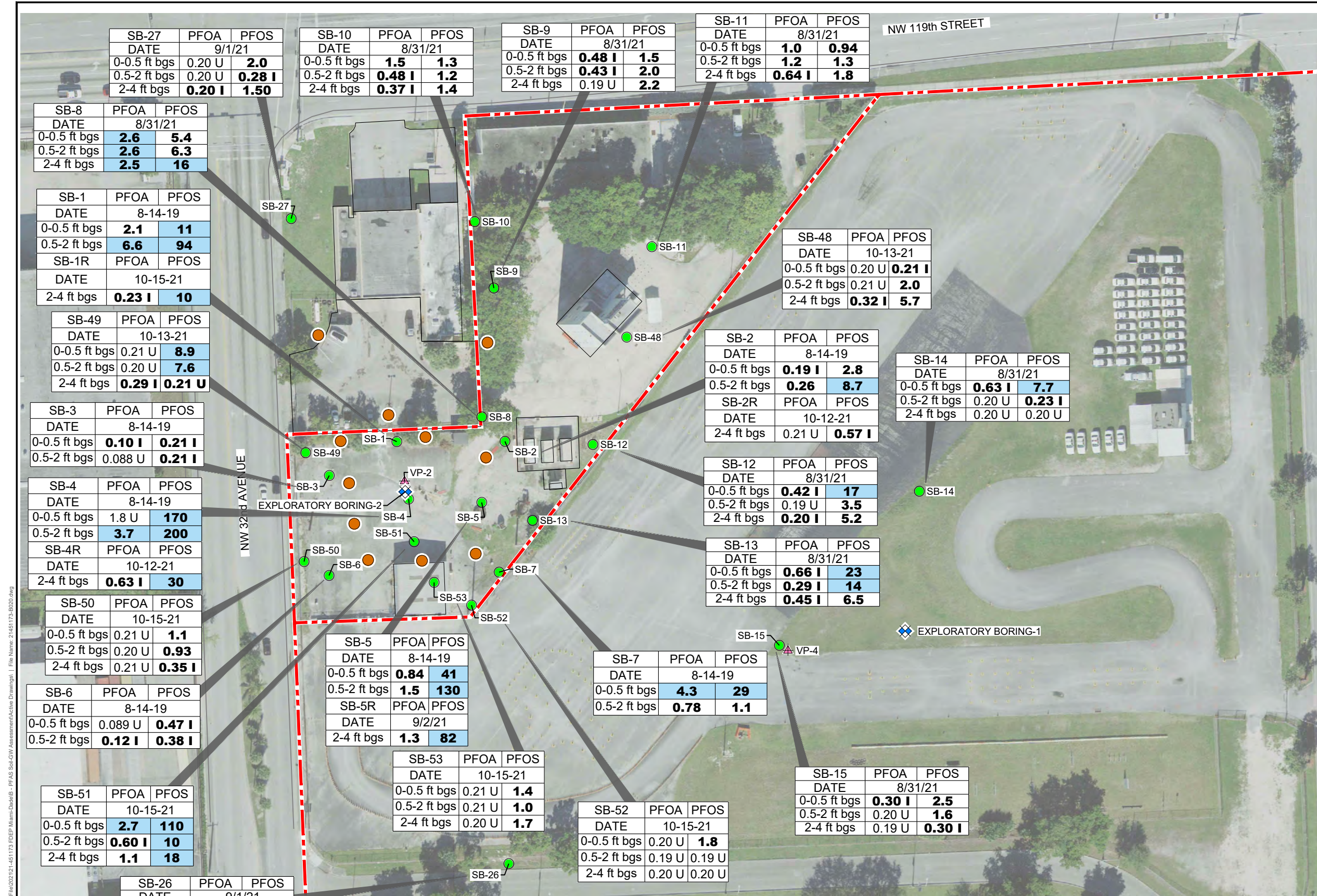
NOTE(S)

- ELEVATIONS ARE IN FEET AND RELATIVE TO NAVD88/NGVD29.
- HORIZONTAL DATUM RELATIVE TO NAD83 FLORIDA STATE PLANES, EAST ZONE, US FOOT/NAD27 FLORIDA STATE PLANES, EAST ZONE(901), US FOOT

CLIENT	FL. DEPARTMENT OF ENVIRONMENTAL PROTECTION	
CONSULTANT	YYYY-MM-DD	2022-05-10
	DESIGNED	SCN
	PREPARED	BCL
	REVIEWED	SN
	APPROVED	RMW

PROJECT	FDEP MIAMI-DADE COLLEGE FIRE ACADEMY PFAS SOIL AND GROUNDWATER ASSESSMENT		
TITLE	PROPOSED SHALLOW MONITORING WELL, DEEP MONITORING WELL, AND VERTICAL GROUNDWATER PROFILING LOCATIONS		
PROJECT NO.	CONTROL	REV.	FIGURE
21-451173	21451173-B019	----	17

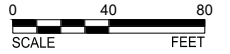
IF THIS MEASUREMENT DOES NOT MATCH WHAT IS SHOWN, THE SHEET SIZE HAS BEEN MODIFIED FROM: ANSI B



LEGEND

- APPROXIMATE PROPERTY BOUNDARY
- SOIL SAMPLE LOCATIONS
- ▲ VERTICAL GROUNDWATER PROFILING LOCATION
- ◆ EXPLORATORY SOIL BORING LOCATION
- PROPOSED SOIL SAMPLE LOCATION

- NOTE(S)**
1. PROVISIONAL SCTL - FDEP PROVISIONAL SOIL CLEANUP TARGET LEVEL.
 2. ALL RESULTS ARE REPORTED IN MICROGRAMS PER KILOGRAM (µg/kg).
 3. BOLD FONTS INDICATES CONSTITUENT CONCENTRATION WAS REPORTED ABOVE THE LABORATORY METHOD DETECTION LIMIT.
 4. HIGHLIGHTED FONT INDICATES CONSTITUENT CONCENTRATION WAS REPORTED ABOVE THE FDEP PROVISIONAL SOIL CLEANUP TARGET LEVEL.
 5. I- REPORTED VALUE IS BETWEEN THE LABORATORY METHOD DETECTION LIMIT AND LABORATORY PRACTICAL QUANTITATION LIMIT.
 6. U - THE COMPOUND WAS ANALYZED FOR, BUT NOT DETECTED. THE REPORTED VALUE IS THE METHOD DETECTION LIMIT FOR THE SAMPLE ANALYZED.
 7. ft bgs - FEET BELOW GROUND SURFACE.
 8. PFOA - PERFLUORO-N-OCTANOIC ACID.
 9. PFOS - PERFLUOROOCETANESULFONIC ACID.



Path: \\golder-gfiscm\projects\client\assessments\21451173-B020.dwg File Name: 21451173-B020.dwg

IF THIS MEASUREMENT DOES NOT MATCH WHAT IS SHOWN, THE SHEET SIZE HAS BEEN MODIFIED FROM ANSIB

SB-26	PFOA	PFOS
DATE	9/1/21	
0-0.5 ft bgs	0.37 I	2.1
0.5-2 ft bgs	0.20 U	0.65 I
2-4 ft bgs	0.21 U	0.21 U

PROVISIONAL SOIL CLEANUP TARGET LEVELS (SCTL)	PFOA IN µg/Kg	PFOS IN µg/Kg
SCTL-LEACHABILITY	2	7
SCTL-RESIDENTIAL	1,300	1,300
SCTL-INDUSTRIAL	25,000	25,000

- REFERENCE(S)**
1. AERIAL IMAGE TAKEN FROM FDEP BUREAU OF SURVEY AND MAPPING (LAND BOUNDARY INFORMATION SYSTEM), DATED JANUARY 2020.

CLIENT	FL. DEPARTMENT OF ENVIRONMENTAL PROTECTION
CONSULTANT	WSP GOLDER
DESIGNED	SN
PREPARED	BCL
REVIEWED	SN
APPROVED	RMW
DATE	2022-04-22

PROJECT	FDEP MIAMI-DADE COLLEGE FIRE ACADEMY PFAS SOIL AND GROUNDWATER ASSESSMENT
TITLE	PROPOSED SOIL SAMPLE LOCATIONS
PROJECT NO.	21-451173
CONTROL	21451173-B020
REV.	
FIGURE	18