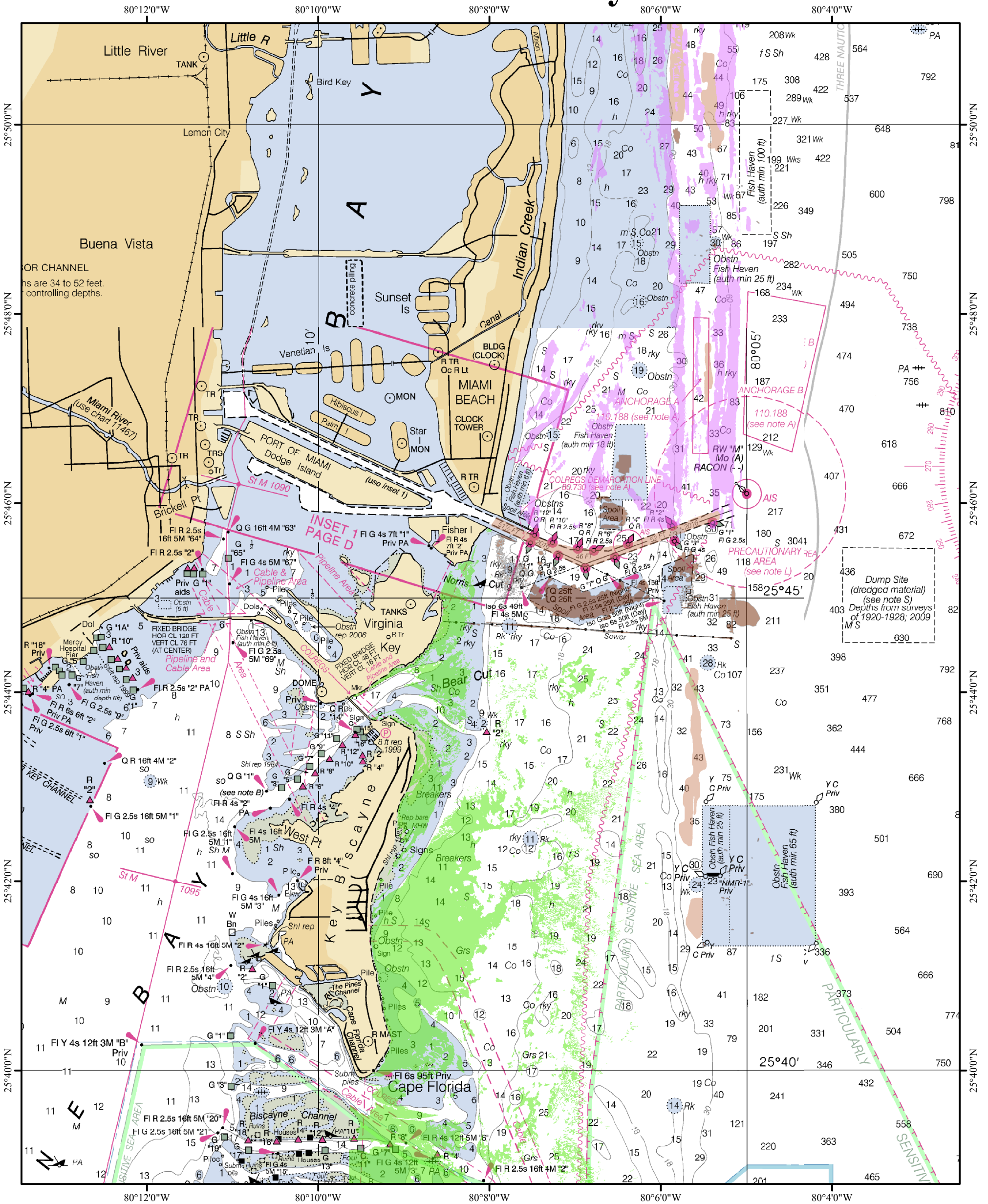
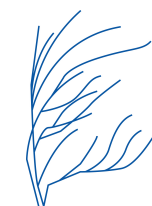
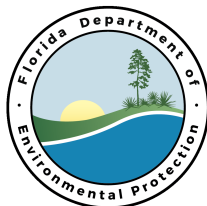
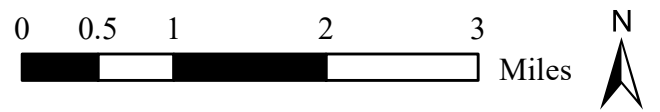


Miami-Dade County South



Legend

- Natural Reef and Hard Bottom
- Seagrass
- Artificial Habitat
- Dredged or Excavated



Southeast Florida Coral Reef Initiative



WARNING: Your use of this map is at our own risk. This map is not intended to be used for navigational purposes and is not intended to be relied upon in situations where precise location information is needed or where erroneous, inaccurate, or incomplete location data may lead to death, personal injury, property or environmental damage. Neither the Florida Department of Environmental Protection (FDEP), Board of Trustees (BOT) of the Internal Improvement Trust Fund of the State of Florida nor any content providers, guarantees the accuracy, completeness, or reliability of displayed data. In no event will the FDEP or BOT of the Internal Improvement Trust Fund of the State of Florida be liable for any damages whatsoever (including, but not limited to, incidental, exemplary, and consequential damages, lost profits, or damages resulting from lost data or business interruption) resulting from the use or inability to use this information, whether based on warranty, contract, tort, or any other legal theory, and whether or not the FDEP or BOT of the Internal Improvement Trust Fund of the State of Florida are advised of the possibility of such damages.