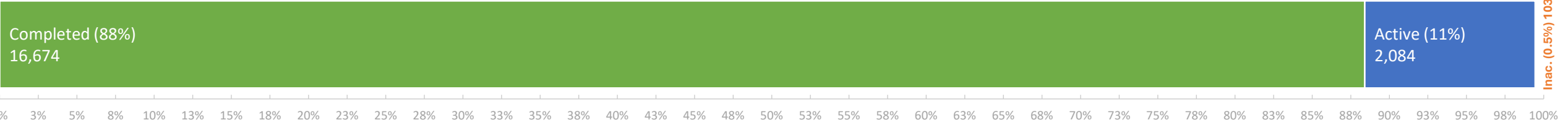


Non-Program Discharge Statuses

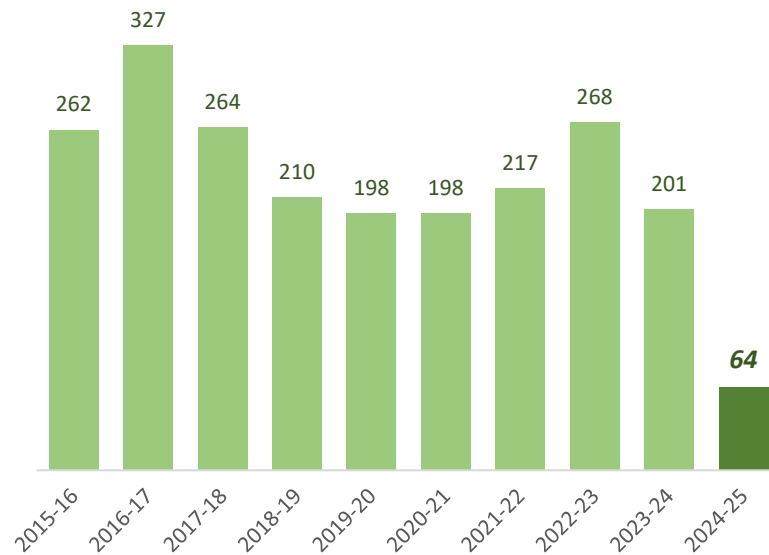
as of January 8, 2025



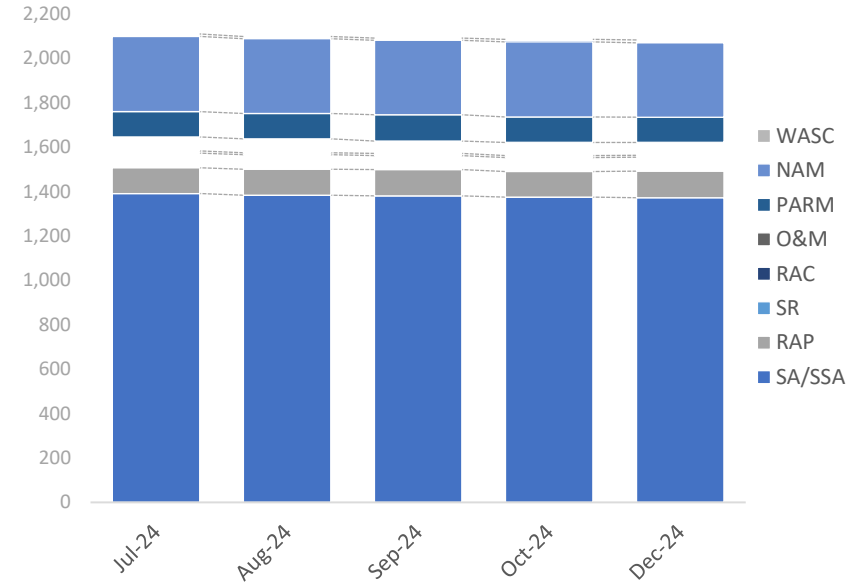
FY24-25 Non-Program Closures by Lead Agency

Closure Type	District	LP	RP TLH	All Closures	% of Closures
LNFA	0	0	0	0	0%
NFA/SRSCO	13	23	3	39	61%
NFAC	2	3	0	5	8%
NREQ	3	8	9	20	31%
Totals	18	34	12	64	100%

Non-Program Closures by Fiscal Year

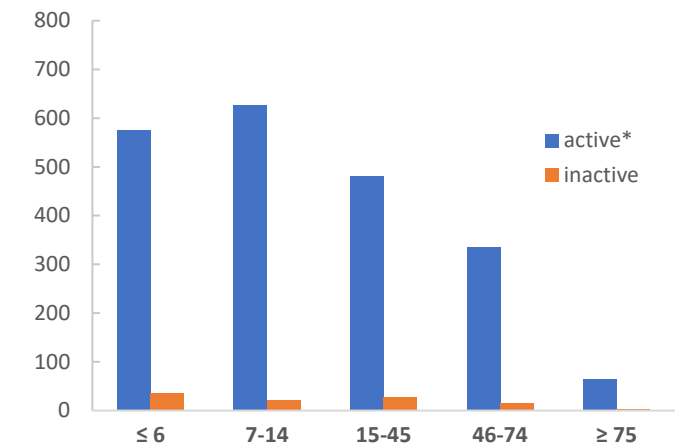


Snapshot of Active Non-Program Discharge Sub-Phas



Sub-Phase	Jul-24	Aug-24	Sep-24	Oct-24	Dec-24	Jan-25	Feb-25	Mar-25	Apr-25	May-25	Jun-25
Site Assessment/Supplemental (SA/SSA)	1,392	1,384	1,381	1,375	1,373						
Remedial Action Plan (RAP)	116	118	119	116	120						
Source Removal (SR)	66	65	63	63	62						
Remedial Action Construction (RAC)	10	9	10	9	9						
Operation & Maintenance (O&M)	63	62	56	59	58						
Post Active Remedial Monitoring (PARM)	114	114	118	115	114						
Natural Attenuation Monitoring (NAM)	339	338	336	338	335						
Well Abandonment/SRSCO (WASC)	11	10	10	11	13						

Non-Program Discharges by Score

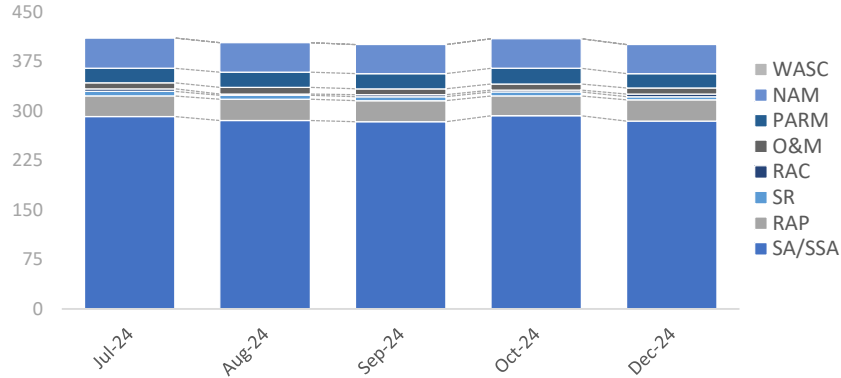


* Discharges with current site managers are considered active.

Non-Program Active Discharge Sub-Phases

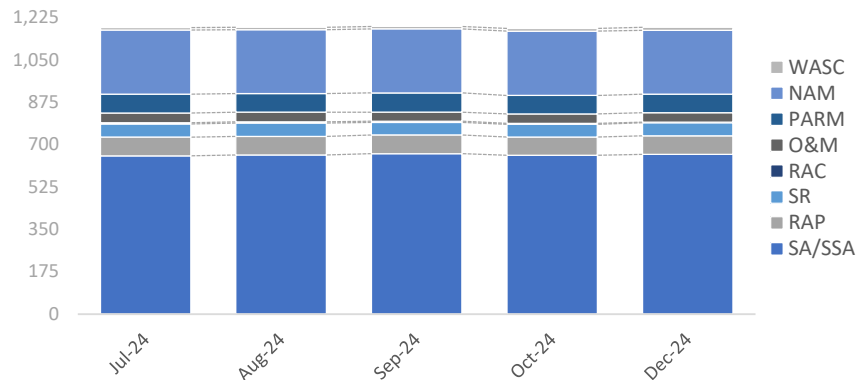
as of January 8, 2025

District Non-Program Active Discharge Sub-Phases



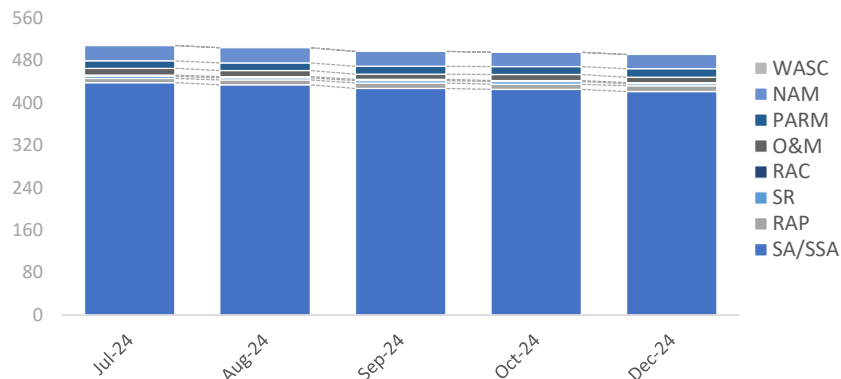
Sub-Phase	Jul-24	Aug-24	Sep-24	Oct-24	Dec-24	Jan-25	Feb-25	Mar-25	Apr-24	May-25	Jun-25
Site Assessment/Supplemental (SA/SSA)	292	286	284	293	285						
Remedial Action Plan (RAP)	31	32	32	30	32						
Source Removal (SR)	7	6	6	6	5						
Remedial Action Construction (RAC)	4	2	3	3	4						
Operation & Maintenance (O&M)	9	10	9	9	9						
Post Active Remedial Monitoring (PARM)	22	23	23	24	22						
Natural Attenuation Monitoring (NAM)	46	45	44	45	44						
Well Abandonment/SRCO (WASC)	0	0	0	0	0						
Total	411	404	401	410	401						

LP Non-Program Active Discharge Sub-Phases



Sub-Phase	Jul-24	Aug-24	Sep-24	Oct-24	Dec-24	Jan-25	Feb-25	Mar-25	Apr-24	May-25	Jun-25
Site Assessment/Supplemental (SA/SSA)	654	657	663	656	660						
Remedial Action Plan (RAP)	77	77	77	76	77						
Source Removal (SR)	55	55	52	52	53						
Remedial Action Construction (RAC)	4	5	5	4	3						
Operation & Maintenance (O&M)	41	40	37	39	39						
Post Active Remedial Monitoring (PARM)	78	77	80	76	76						
Natural Attenuation Monitoring (NAM)	264	264	264	266	264						
Well Abandonment/SRCO (WASC)	11	10	10	11	13						
Total	1,184	1,185	1,188	1,180	1,185						

RP/TLH Non-Program Active Discharge Sub-Phases



Sub-Phase	Jul-24	Aug-24	Sep-24	Oct-24	Dec-24	Jan-25	Feb-25	Mar-25	Apr-24	May-25	Jun-25
Site Assessment/Supplemental (SA/SSA)	439	435	428	426	422						
Remedial Action Plan (RAP)	8	9	10	10	11						
Source Removal (SR)	4	4	5	5	4						
Remedial Action Construction (RAC)	2	2	2	2	2						
Operation & Maintenance (O&M)	13	12	10	11	10						
Post Active Remedial Monitoring (PARM)	14	14	15	15	16						
Natural Attenuation Monitoring (NAM)	29	29	28	27	27						
Well Abandonment/SRCO (WASC)	0	0	0	0	0						
Total	509	505	498	496	492						